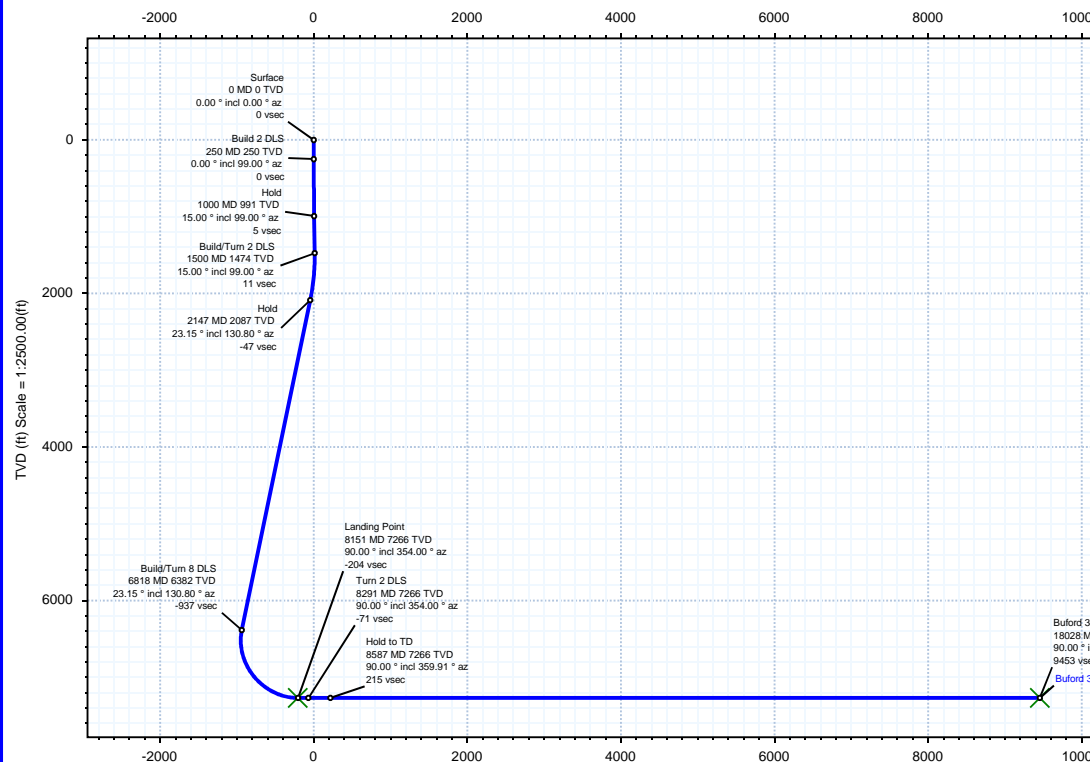


Borehole:	Well:	Field:	Structure:
Original Hole	Buford 33-6-2L	CO, Weld County (NAD 83 NZ) - 2019	Confluence 33-01N-65W (Freedom 33 Pad)

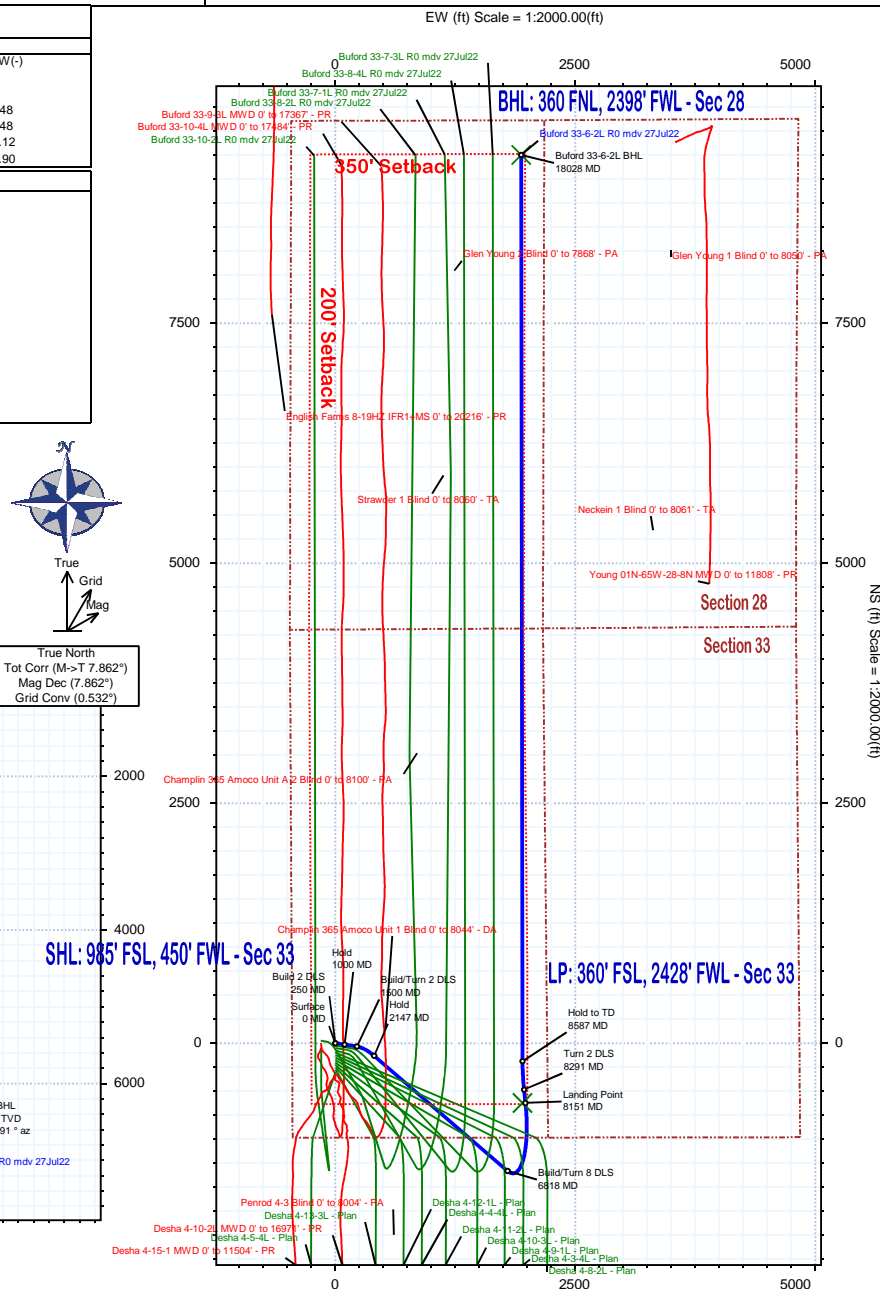
Gravity & Magnetic Parameters	Surface Location	NAD83 Colorado State Plane, Northern Zone, US Feet	Miscellaneous
Model: HDGM 2022 Dip: 66.206° Date: 11-Jul-2022	Lat: N 40 0 11.66 Northing: 1245097.47ftUS Grid Conv: 0.5319°	Lon: W 104 40 36.52 Easting: 3230605.37ftUS Scale Fact: 0.9999613	Slot: Buford 33-6-2L TVD Ref: KB = 23ft(5101ft above MSL)
MagDec: 7.862° FS: 51573.7nT Gravity FS: 998.983mgn (9.80665 Based)			Plan: Buford 33-6-2L R0 mdv 27Jul22

Target Description		Surface Location		Grid Coord		Local Coord	
Target Name		Latitude	Longitude	Northing	Easting	TVD	VSec
Freedom 33 Pad Sec 33-28 - CL NS	N 40 0 11.66	W 104 40 36.52	1245097.47	3230605.37	5101.00	0.00	0.00
Freedom 33 Pad Sec 33-28 - W2	N 40 0 11.66	W 104 40 36.52	1245097.47	3230605.37	5101.00	0.00	0.00
350' NSx200' EW SB	N 40 0 10.91	W 104 40 38.42	1245019.60	3230457.61	5101.00	-105.27	-76.50
Freedom 33 Pad Sec 33-28 - CL	N 40 0 10.91	W 104 40 38.42	1245019.60	3230457.61	5101.00	-105.27	-76.50
Buford 33-6-2L BHL	N 40 1 43.10	W 104 40 11.64	1254367.68	3232454.44	7266.00	9453.16	9252.98
Buford 33-6-2L LP	N 40 0 5.51	W 104 40 11.46	1244492.76	3232560.89	7266.00	-210.51	-622.85

Critical Points							
Critical Point	MD	INCL	AZIM	TVD	VSEC	N(+)S(-)	E(+)W(-)
Surface	0.00	0.00	0.00	0.00	0.00	0.00	0.00
Build 2 DLS	250.00	0.00	99.00	250.00	0.00	0.00	0.00
Hold	1000.00	15.00	99.00	991.46	4.79	-15.27	96.41
Build/Turn 2 DLS	1500.00	15.00	99.00	1474.42	11.14	-35.51	224.23
Hold	2146.91	23.15	130.80	2086.86	-46.64	-132.13	403.95
Build/Turn 8 DLS	6817.89	23.15	130.80	6381.62	-936.81	-1332.30	1794.17
Landing Point	8151.10	90.00	354.00	7266.00	-204.37	-622.85	1979.90
Turn 2 DLS	8291.10	90.00	354.00	7266.00	-71.08	-483.62	1965.27
Hold to TD	8586.71	90.00	359.91	7266.00	214.53	-188.56	1949.58
Buford 33-6-2L BHL	18028.26	90.00	359.91	7266.00	9453.16	9252.98	1935.12



Vertical Section (ft) Azim = 11.81° Scale = 1:2500.00(ft) Origin = 0N/-S, 0E/-W



Buford 33-6-2L R0 mdv 27Jul22 Proposal Geodetic Report

(Def Plan)

Report Date: August 02, 2022 - 11:30 AM
Client: Confluence DJ
Field: CO, Weld County (NAD 83 NZ) - 2019
Structure / Slot: Confluence 33-01N-65W (Freedom 33 Pad) / Buford 33-6-2L
Well: Buford 33-6-2L
Borehole: Original Hole
UWI / API#: 05-123-45538
Survey Name: Buford 33-6-2L R0 mdv 27Jul22
Survey Date: July 11, 2022
Tort / AHD / DDI / ERD Ratio: 140.508 ° / 12992.788 ft / 6.656 / 1.788
Coordinate Reference System: NAD83 Colorado State Plane, Northern Zone, US Feet
Location Lat / Long: N 40° 0' 11.66400", W 104° 40' 36.51600"
Location Grid N/E Y/X: N 1245097.468 ftUS, E 3230605.365 ftUS
CRS Grid Convergence Angle: 0.5319 °
Grid Scale Factor: 0.99996613
Version / Patch: 2.10.832.2

Survey / DLS Computation: Minimum Curvature / Lubinski
Vertical Section Azimuth: 11.812 ° (True North)
Vertical Section Origin: 0.000 ft, 0.000 ft
TVD Reference Datum: KB = 23ft
TVD Reference Elevation: 5101.000 ft above MSL
Seabed / Ground Elevation: 5078.000 ft above MSL
Magnetic Declination: 7.862 °
Total Gravity Field Strength: 998.9830mgn (9.80665 Based)
Gravity Model: GARM
Total Magnetic Field Strength: 51573.700 nT
Magnetic Dip Angle: 66.206 °
Declination Date: July 11, 2022
Magnetic Declination Model: HDGM 2022
North Reference: True North
Grid Convergence Used: 0.0000 °
Total Corr Mag North->True North: 7.8623 °
Local Coord Referenced To: Well Head

Comments	MD (ft)	Incl (°)	Azim True (°)	TVD (ft)	TVDSS (ft)	VSEC (ft)	NS (ft)	EW (ft)	DLS (°/100ft)	Northing (ftUS)	Easting (ftUS)	Latitude (°)	Longitude (°)
Surface	0.00	0.00	0.00	0.00	-5101.00	0.00	0.00	0.00	N/A	1245097.47	3230605.37	40.003240	-104.676810
Build 2 DLS	100.00	0.00	99.00	100.00	-5001.00	0.00	0.00	0.00	0.00	1245097.47	3230605.37	40.003240	-104.676810
	200.00	0.00	99.00	200.00	-4901.00	0.00	0.00	0.00	0.00	1245097.47	3230605.37	40.003240	-104.676810
	250.00	0.00	99.00	250.00	-4851.00	0.00	0.00	0.00	0.00	1245097.47	3230605.37	40.003240	-104.676810
	300.00	1.00	99.00	300.00	-4801.00	0.02	-0.07	0.43	2.00	1245097.40	3230605.80	40.003240	-104.676808
	400.00	3.00	99.00	399.93	-4701.07	0.19	-0.61	3.88	2.00	1245096.89	3230609.25	40.003238	-104.676796
	500.00	5.00	99.00	499.68	-4601.32	0.53	-1.71	10.77	2.00	1245095.86	3230616.15	40.003235	-104.676772
	600.00	7.00	99.00	599.13	-4501.87	1.05	-3.34	21.09	2.00	1245094.32	3230626.49	40.003231	-104.676735
	700.00	9.00	99.00	698.15	-4402.85	1.73	-5.52	34.84	2.00	1245092.27	3230640.25	40.003225	-104.676686
	800.00	11.00	99.00	796.63	-4304.37	2.58	-8.23	51.99	2.00	1245089.72	3230657.42	40.003217	-104.676624
	900.00	13.00	99.00	894.44	-4206.56	3.60	-11.49	72.52	2.00	1245086.66	3230677.99	40.003208	-104.676551
Hold	1000.00	15.00	99.00	991.46	-4109.54	4.79	-15.27	96.41	2.00	1245083.09	3230701.91	40.003198	-104.676466
	1100.00	15.00	99.00	1088.05	-4012.95	6.06	-19.32	121.98	0.00	1245079.28	3230727.51	40.003187	-104.676375
	1200.00	15.00	99.00	1184.65	-3916.35	7.33	-23.37	147.54	0.00	1245075.47	3230753.11	40.003176	-104.676283
	1300.00	15.00	99.00	1281.24	-3819.76	8.60	-27.42	173.10	0.00	1245071.66	3230778.71	40.003165	-104.676192
	1400.00	15.00	99.00	1377.83	-3723.17	9.87	-31.47	198.67	0.00	1245067.85	3230804.31	40.003154	-104.676101
	1500.00	15.00	99.00	1474.42	-3626.58	11.14	-35.51	224.23	0.00	1245064.04	3230829.91	40.003143	-104.676010
Build/Turn 2 DLS	1600.00	15.86	105.79	1570.83	-3530.17	10.83	-41.26	250.17	2.00	1245058.54	3230855.89	40.003127	-104.675917
	1700.00	16.92	111.82	1666.77	-3434.23	7.35	-50.38	276.83	2.00	1245049.66	3230882.64	40.003102	-104.675822
	1800.00	18.12	117.12	1762.13	-3338.87	0.72	-62.88	304.18	2.00	1245037.41	3230910.10	40.003067	-104.675724
	1900.00	19.46	121.75	1856.81	-3244.19	-9.07	-78.74	332.19	2.00	1245021.82	3230938.26	40.003024	-104.675624
	2000.00	20.90	125.78	1950.67	-3150.33	-21.99	-97.93	360.82	2.00	1245002.89	3230967.07	40.002971	-104.675522
	2100.00	22.42	129.31	2043.62	-3057.38	-38.04	-120.44	390.05	2.00	1244980.66	3230996.50	40.002909	-104.675418
	2146.91	23.15	130.80	2086.86	-3014.14	-46.64	-132.13	403.95	2.00	1244969.10	3231010.51	40.002877	-104.675368
	2200.00	23.15	130.80	2135.68	-2965.32	-56.76	-145.77	419.75	0.00	1244955.60	3231026.44	40.002840	-104.675312
	2300.00	23.15	130.80	2227.62	-2873.38	-75.82	-171.47	449.51	0.00	1244930.19	3231056.43	40.002769	-104.675205
	2400.00	23.15	130.80	2319.57	-2781.43	-94.87	-197.16	479.28	0.00	1244904.77	3231086.43	40.002699	-104.675099
Hold	2500.00	23.15	130.80	2411.52	-2689.48	-113.93	-222.85	509.04	0.00	1244879.36	3231116.43	40.002628	-104.674993
	2600.00	23.15	130.80	2503.46	-2597.54	-132.99	-248.55	538.80	0.00	1244853.94	3231146.43	40.002558	-104.674887
	2700.00	23.15	130.80	2595.41	-2505.59	-152.05	-274.24	568.56	0.00	1244828.52	3231176.43	40.002487	-104.674781
	2800.00	23.15	130.80	2687.35	-2413.65	-171.10	-299.94	598.33	0.00	1244803.11	3231206.43	40.002417	-104.674674
	2900.00	23.15	130.80	2779.30	-2321.70	-190.16	-325.63	628.09	0.00	1244777.69	3231236.43	40.002346	-104.674568
	3000.00	23.15	130.80	2871.24	-2229.76	-209.22	-351.33	657.85	0.00	1244752.28	3231266.43	40.002276	-104.674462
	3100.00	23.15	130.80	2963.19	-2137.81	-228.28	-377.02	687.62	0.00	1244726.86	3231296.43	40.002205	-104.674356
	3200.00	23.15	130.80	3055.13	-2045.87	-247.33	-402.71	717.38	0.00	1244701.45	3231326.43	40.002134	-104.674249
	3300.00	23.15	130.80	3147.08	-1953.92	-266.39	-428.41	747.14	0.00	1244676.03	3231356.43	40.002064	-104.674143
	3400.00	23.15	130.80	3239.03	-1861.97	-285.45	-454.10	776.90	0.00	1244650.61	3231386.42	40.001993	-104.674037
	3500.00	23.15	130.80	3330.97	-1770.03	-304.51	-479.80	806.67	0.00	1244625.20	3231416.42	40.001923	-104.673931
	3600.00	23.15	130.80	3422.92	-1678.08	-323.56	-505.49	836.43	0.00	1244599.78	3231446.42	40.001852	-104.673824
	3700.00	23.15	130.80	3514.86	-1586.14	-342.62	-531.18	866.19	0.00	1244574.37	3231476.42	40.001782	-104.673718
	3800.00	23.15	130.80	3606.81	-1494.19	-361.68	-556.88	895.96	0.00	1244548.95	3231506.42	40.001711	-104.673612
	3900.00	23.15	130.80	3698.75	-1402.25	-380.74	-582.57	925.72	0.00	1244523.53	3231536.42	40.001641	-104.673506
	4000.00	23.15	130.80	3790.70	-1310.30	-399.79	-608.27	955.48	0.00	1244498.12	3231566.42	40.001570	-104.673399
	4100.00	23.15	130.80	3882.64	-1218.36	-418.85	-633.96	985.25	0.00	1244472.70	3231596.42	40.001500	-104.673293
	4200.00	23.15	130.80	3974.59	-1126.41	-437.91	-659.66	1015.01	0.00	1244447.29	3231626.42	40.001429	-104.673187
	4300.00	23.15	130.80	4066.54	-1034.46	-456.97	-685.35	1044.77	0.00	1244421.87	3231656.42	40.001359	-104.673081
	4400.00	23.15	130.80	4158.48	-942.52	-476.02	-711.04	1074.53	0.00	1244396.45	3231686.41	40.001288	-104.672975
	4500.00	23.15	130.80	4250.43	-850.57	-495.08	-736.74	1104.30	0.00	1244371.04	3231716.41	40.001218	-104.672868
	4600.00	23.15	130.80	4342.37	-758.63	-514.14	-762.43	1134.06	0.00	1244345.62	3231746.41	40.001147	-104.672762
	4700.00	23.15	130.80	4434.32	-666.68	-533.19	-788.13	1163.82	0.00	1244320.21	3231776.41	40.001076	-104.672656
	4800.00	23.15	130.80	4526.26	-574.74	-552.25	-813.82	1193.59	0.00	1244294.79	3231806.41	40.001006	-104.672550
	4900.00	23.15	130.80	4618.21	-482.79	-571.31	-839.51	1223.35	0.00	1244269.38	3231836.41	40.000935	-104.672443
	5000.00	23.15	130.80	4710.15	-390.85	-590.37	-865.21	1253.11	0.00	1244243.96	3231866.41	40.000865	-104.672337
	5100.00	23.15	130.80	4802.10	-298.90	-609.42	-890.90	1282.87	0.00	1244218.54	3231896.41	40.000794	-104.672231
	5200.00	23.15	130.80	4894.05	-206.95	-628.48	-916.60	1312.64	0.00	1244193.13	3231926.41	40.000724	-104.672125
	5300.00	23.15	130.80	4985.99	-115.01	-647.54	-942.29	1342.40	0.00	1244167.71	3231956.41	40.000653	-104.672018
	5400.00	23.15	130.80	5077.94	-23.06	-666.60	-967.99	1372.16	0.00	1244142.30	3231986.41	40.000583	-104.671912
	5500.00	23.15	130.80	5169.88	68.88	-685.65	-993.68	1401.93	0.00	1244116.88	3232016.40	40.000512	-104.671806
	5600.00	23.15	130.80	5261.83	160.83	-704.71	-1019.37	1431.69	0.00	1244091.46	3232046.40	40.000442	-104.671700
	5700.00	23.15	130.80	5353.77	252.77	-723.77	-1045.07	1461.45	0.00	1244066.05	3232076.40	40.000371	-104.671594
	5800.00	23.15	130.80	5445.72	344.72	-742.83	-1070.76	1491.21	0.00	1244040.63	3232106.40	40.000301	-104.671487
	5900.00	23.15	130.80	5537.66	436.66	-761.88	-1096.46	1520.98	0.00	1244015.22	3232136.40	40.000230	-104.671381
	6000.00	23.15	130.80	5629.61	528.61	-780.94	-1122.15	1550.74	0.00	1243989.80	3232166.40	40.000159	-104.671275
	6100.00	23.15	130.80	5721.56	620.56	-800.00	-1147.84	1580.50	0.00	1243964.39	3232196.40	40.000089	-104.671169
	6200.00	23.15	130.80	5813.50	712.50	-819.06	-1173.54	1610.27	0.00	1243938.97	3232226.40	40.000018	-104.671062
	6300.00	23.15	130.80	5905.45	804.45	-838.11	-1199.23	1640.03	0.00	1243913.55	3232256.40	39.999948	-104.670956
	6400.00	23.15	130.80	5997.39	896.39	-857.17	-1224.93	1669.79	0.00	1243888.14	3232286.40	39.999877	-104.670850
	6500.00	23.15	130.80	6089.34	988.34	-873.23	-1250.62	1699.55	0.00	1243862.72	3232316.39	39.999807	-104.670744
	6600.00	23.15	130.80	6181.28	1080.28	-895.29	-1276.31	1729.32	0.00	1243837.31	3232346.39	39.999736	-104.670637
	6700.00	23.15	130.80	6273.23	1172.23	-914.34	-1302.01	1759.08	0.00	1243811.89	3232376.39	39.999666	-104.670531
	6800.00	23.15	130.80	6365.17	1264.17	-933.40	-1327.70	1788.84	0.00	1243786.47	3232406.39	39.999595	-104.670425
	6817.89	23.15	130.80	6381.62	1280.62	-936.81	-1332.30	1794.17	0.00	1243781.93	32324112		

Comments	MD (ft)	Incl (°)	Azin True (°)	TVD (ft)	TVDSS (ft)	VSEC (ft)	NS (ft)	EW (ft)	DLS (°/100ft)	Northing (ftUS)	Easting (ftUS)	Latitude (°)	Longitude (°)
Landing Point	8100.00	86.08	355.15	7264.25	2163.25	-253.13	-673.68	1984.73	8.00	1244442.26	3232596.19	40.001390	-104.669726
	8151.10	90.00	354.00	7266.00	2165.00	-204.37	-622.85	1979.90	8.00	1244493.04	3232590.89	40.001530	-104.669743
	8200.00	90.00	354.00	7266.00	2165.00	-157.81	-574.22	1974.79	0.00	1244541.62	3232585.33	40.001663	-104.669761
	8291.10	90.00	354.00	7266.00	2165.00	-71.08	-483.62	1965.27	0.00	1244632.13	3232574.97	40.001912	-104.669795
Turn 2 DLS	8300.00	90.00	354.18	7266.00	2165.00	-62.60	-474.77	1964.35	2.00	1244640.97	3232573.97	40.001937	-104.669798
	8400.00	90.00	356.18	7266.00	2165.00	33.21	-375.13	1955.94	2.00	1244740.53	3232564.64	40.002210	-104.669828
	8500.00	90.00	358.18	7266.00	2165.00	129.96	-275.25	1951.02	2.00	1244840.35	3232558.79	40.002484	-104.669846
	8586.71	90.00	359.91	7266.00	2165.00	214.53	-188.56	1949.58	2.00	1244927.02	3232556.54	40.002722	-104.669851
Hold to TD	8600.00	90.00	359.91	7266.00	2165.00	227.53	-175.27	1949.56	0.00	1244940.31	3232556.39	40.002759	-104.669851
	8700.00	90.00	359.91	7266.00	2165.00	325.38	-75.27	1949.40	0.00	1245040.30	3232555.31	40.003033	-104.669852
	8800.00	90.00	359.91	7266.00	2165.00	423.23	24.73	1949.25	0.00	1245140.29	3232554.23	40.003308	-104.669852
	8900.00	90.00	359.91	7266.00	2165.00	521.08	124.73	1949.10	0.00	1245240.28	3232553.15	40.003582	-104.669853
	9000.00	90.00	359.91	7266.00	2165.00	618.93	224.73	1948.94	0.00	1245340.27	3232552.07	40.003857	-104.669853
	9100.00	90.00	359.91	7266.00	2165.00	716.78	324.73	1948.79	0.00	1245440.26	3232550.99	40.004131	-104.669854
	9200.00	90.00	359.91	7266.00	2165.00	814.63	424.73	1948.64	0.00	1245540.25	3232549.91	40.004406	-104.669854
	9300.00	90.00	359.91	7266.00	2165.00	912.48	524.73	1948.48	0.00	1245640.24	3232548.82	40.004680	-104.669855
	9400.00	90.00	359.91	7266.00	2165.00	1010.33	624.73	1948.33	0.00	1245740.23	3232547.74	40.004955	-104.669855
	9500.00	90.00	359.91	7266.00	2165.00	1108.19	724.73	1948.18	0.00	1245840.22	3232546.66	40.005229	-104.669856
	9600.00	90.00	359.91	7266.00	2165.00	1206.04	824.73	1948.02	0.00	1245940.22	3232545.58	40.005504	-104.669856
	9700.00	90.00	359.91	7266.00	2165.00	1303.89	924.73	1947.87	0.00	1246040.21	3232544.50	40.005778	-104.669857
	9800.00	90.00	359.91	7266.00	2165.00	1401.74	1024.73	1947.72	0.00	1246140.20	3232543.42	40.006053	-104.669857
	9900.00	90.00	359.91	7266.00	2165.00	1499.59	1124.73	1947.56	0.00	1246240.19	3232542.34	40.006327	-104.669858
	10000.00	90.00	359.91	7266.00	2165.00	1597.44	1224.73	1947.41	0.00	1246340.18	3232541.25	40.006602	-104.669858
	10100.00	90.00	359.91	7266.00	2165.00	1695.29	1324.73	1947.26	0.00	1246440.17	3232540.17	40.006876	-104.669859
	10200.00	90.00	359.91	7266.00	2165.00	1793.14	1424.73	1947.11	0.00	1246540.16	3232539.09	40.007151	-104.669859
	10300.00	90.00	359.91	7266.00	2165.00	1890.99	1524.73	1946.95	0.00	1246640.15	3232538.01	40.007425	-104.669860
	10400.00	90.00	359.91	7266.00	2165.00	1988.84	1624.73	1946.80	0.00	1246740.14	3232536.93	40.007700	-104.669860
	10500.00	90.00	359.91	7266.00	2165.00	2086.69	1724.73	1946.65	0.00	1246840.13	3232535.85	40.007974	-104.669861
	10600.00	90.00	359.91	7266.00	2165.00	2184.55	1824.73	1946.49	0.00	1246940.12	3232534.77	40.008249	-104.669861
	10700.00	90.00	359.91	7266.00	2165.00	2282.40	1924.73	1946.34	0.00	1247040.11	3232533.68	40.008523	-104.669862
	10800.00	90.00	359.91	7266.00	2165.00	2380.25	2024.73	1946.19	0.00	1247140.10	3232532.60	40.008798	-104.669862
	10900.00	90.00	359.91	7266.00	2165.00	2478.10	2124.73	1946.03	0.00	1247240.09	3232531.52	40.009072	-104.669863
	11000.00	90.00	359.91	7266.00	2165.00	2575.95	2224.73	1945.88	0.00	1247340.08	3232530.44	40.009347	-104.669864
	11100.00	90.00	359.91	7266.00	2165.00	2673.80	2324.73	1945.73	0.00	1247440.07	3232529.36	40.009621	-104.669864
	11200.00	90.00	359.91	7266.00	2165.00	2771.65	2424.73	1945.57	0.00	1247540.06	3232528.28	40.009896	-104.669865
	11300.00	90.00	359.91	7266.00	2165.00	2869.50	2524.73	1945.42	0.00	1247640.05	3232527.20	40.010170	-104.669865
	11400.00	90.00	359.91	7266.00	2165.00	2967.35	2624.73	1945.27	0.00	1247740.05	3232526.11	40.010445	-104.669866
	11500.00	90.00	359.91	7266.00	2165.00	3065.20	2724.73	1945.11	0.00	1247840.04	3232525.03	40.010719	-104.669866
	11600.00	90.00	359.91	7266.00	2165.00	3163.05	2824.73	1944.96	0.00	1247940.03	3232523.95	40.010994	-104.669867
	11700.00	90.00	359.91	7266.00	2165.00	3260.91	2924.73	1944.81	0.00	1248040.02	3232522.87	40.011268	-104.669867
	11800.00	90.00	359.91	7266.00	2165.00	3358.76	3024.73	1944.66	0.00	1248140.01	3232521.79	40.011543	-104.669868
	11900.00	90.00	359.91	7266.00	2165.00	3456.61	3124.73	1944.50	0.00	1248240.00	3232520.71	40.011817	-104.669868
	12000.00	90.00	359.91	7266.00	2165.00	3554.46	3224.73	1944.35	0.00	1248339.99	3232519.63	40.012092	-104.669869
	12100.00	90.00	359.91	7266.00	2165.00	3652.31	3324.73	1944.20	0.00	1248439.98	3232518.54	40.012366	-104.669869
	12200.00	90.00	359.91	7266.00	2165.00	3750.16	3424.73	1944.04	0.00	1248539.97	3232517.46	40.012641	-104.669870
	12300.00	90.00	359.91	7266.00	2165.00	3848.01	3524.73	1943.89	0.00	1248639.96	3232516.38	40.012915	-104.669870
	12400.00	90.00	359.91	7266.00	2165.00	3945.86	3624.73	1943.74	0.00	1248739.95	3232515.30	40.013190	-104.669871
	12500.00	90.00	359.91	7266.00	2165.00	4043.71	3724.73	1943.58	0.00	1248839.94	3232514.22	40.013464	-104.669871
	12600.00	90.00	359.91	7266.00	2165.00	4141.56	3824.73	1943.43	0.00	1248939.93	3232513.14	40.013739	-104.669872
	12700.00	90.00	359.91	7266.00	2165.00	4239.41	3924.73	1943.28	0.00	1249039.92	3232512.06	40.014014	-104.669872
	12800.00	90.00	359.91	7266.00	2165.00	4337.27	4024.73	1943.12	0.00	1249139.91	3232510.98	40.014288	-104.669873
	12900.00	90.00	359.91	7266.00	2165.00	4435.12	4124.73	1942.97	0.00	1249239.90	3232509.89	40.014563	-104.669873
	13000.00	90.00	359.91	7266.00	2165.00	4532.97	4224.73	1942.82	0.00	1249339.89	3232508.81	40.014837	-104.669874
	13100.00	90.00	359.91	7266.00	2165.00	4630.82	4324.73	1942.66	0.00	1249439.88	3232507.73	40.015112	-104.669874
	13200.00	90.00	359.91	7266.00	2165.00	4728.67	4424.73	1942.51	0.00	1249539.88	3232506.65	40.015386	-104.669875
	13300.00	90.00	359.91	7266.00	2165.00	4826.52	4524.73	1942.36	0.00	1249639.87	3232505.57	40.015661	-104.669875
	13400.00	90.00	359.91	7266.00	2165.00	4924.37	4624.73	1942.21	0.00	1249739.86	3232504.49	40.015935	-104.669876
	13500.00	90.00	359.91	7266.00	2165.00	5022.22	4724.73	1942.05	0.00	1249839.85	3232503.41	40.016210	-104.669877
	13600.00	90.00	359.91	7266.00	2165.00	5120.07	4824.72	1941.90	0.00	1249939.84	3232502.32	40.016484	-104.669877
	13700.00	90.00	359.91	7266.00	2165.00	5217.92	4924.72	1941.75	0.00	1250039.83	3232501.24	40.016759	-104.669878
	13800.00	90.00	359.91	7266.00	2165.00	5315.77	5024.72	1941.59	0.00	1250139.82	3232500.16	40.017033	-104.669878
	13900.00	90.00											

Comments	MD (ft)	Incl (°)	Azim True (°)	TVD (ft)	TVDSS (ft)	VSEC (ft)	NS (ft)	EW (ft)	DLS (°/100ft)	Northing (ftUS)	Easting (ftUS)	Latitude (°)	Longitude (°)
Description	Part	MD From (ft)	MD To (ft)	EOU Freq (ft)	Hole Size (in)	Casing Diameter (in)	Expected Max Inclination (deg)	Survey Tool Type		Borehole / Survey			
	1	0.000	23.000	1/100.000	13.500	9.625		B001Mb_MWD+HRGM-Depth Only		Original Hole / Buford 33-6-2L R0 mdv 27Jul22			
	1	23.000	1700.000	1/100.000	13.500	9.625		B001Mb_MWD+HRGM		Original Hole / Buford 33-6-2L R0 mdv 27Jul22			
	1	1700.000	18028.259	1/100.000	8.500	5.500		B001Mb_MWD+HRGM		Original Hole / Buford 33-6-2L R0 mdv 27Jul22			

Buford 33-6-2L R0 mdv 27Jul22 Anti-Collision Summary Report

Analysis Date-24hr Time: August 02, 2022 - 11:31
Client: Confluence DJ
Field: CO, Weld County (NAD 83 NZ) - 2019
Structure: Confluence 33-01N-65W (Freedom 33 Pad)
Slot: Buford 33-6-2L
Well: Buford 33-6-2L
Borehole: Original Hole
Scan MD Range: 0.00ft ~ 18028.26ft

Analysis Method: 3D Least Distance
Reference Trajectory: Buford 33-6-2L R0 mdv 27Jul22 (Def Plan)
Depth Interval: Every 10.00 Measured Depth (ft)
Rule Set: NAL Procedure: D&M AntiCollision Standard S002
Min Pts: All local minima indicated.
Version / Patch: 2.10.832.2
Database \ Project: us1455vsm3175\drilling-CO, Weld County 2.10_RESTORE

Trajectory Error Model: ISCWSA3 3-D 95.000% Confidence 2.7955 sigma, for subject well. For offset wells, error model version is specified with each well respectively.

Offset Selection Criteria

Wellhead distance scan: Not performed!
 Selection filters: Definitive Surveys - Definitive Plans - Definitive surveys exclude definitive plans
 - All Non-Def Surveys when no Def-Survey is set in a borehole - All Non-Def Plans when no Def-Plan is set in a borehole

Offset Trajectories Summary

Offset Trajectory	Separation			Allow Dev. (ft)	Sep. Fact.	Controlling Rule	Reference Trajectory		Risk Level			Alert	Status
	Ct-Ct (ft)	MAS (ft)	EOU (ft)				MD (ft)	TVD (ft)	Alert	Minor	Major		

Results highlighted: Sep-Factor separation <= 1.50 ft

Buford 33-7-3L R0 mdv 27Jul22 (Def Plan)

													Fail Major
25.50	20.59	24.52	4.91	N/A		MAS = 6.28 (m)	0.00	0.00	CtCt<=15m<15.00			Enter Alert	
25.50	20.59	24.52	4.91	N/A		MAS = 6.28 (m)	23.00	23.00				WRP	
25.19	20.59	19.85	4.59		5.56	MAS = 6.28 (m)	500.00	499.68				MinPts	
28.99	22.24	13.84	6.76		1.98	OSF1.50	1320.00	1300.56				MINPT-O-EOU	
29.33	22.63	13.91	6.70		1.96	OSF1.50	1340.00	1319.88				MinPt-O-ADP	
30.04	23.24	14.22	6.80		1.98	OSF1.50	1370.00	1348.85				MinPt-O-SF	
79.70	36.19	55.24	43.51		3.35	OSF1.50	2170.00	2108.10				MinPt-O-SF	
81.25	36.88	56.34	44.38		3.35	OSF1.50	2220.00	2154.07				MinPt-O-SF	
373.71	124.60	290.31	249.11		4.52	OSF1.50	6900.00	6458.25				MinPt-O-SF	
378.85	126.25	294.36	252.60		4.52	OSF1.50	7000.00	6553.60				MinPt-O-SF	
382.61	127.41	297.34	255.20		4.53	OSF1.50	7100.00	6649.44				MinPt-O-SF	
308.76	309.18	102.31	-0.42		1.50	OSF1.50	12430.00	7266.00		OSF<1.50		Enter Minor	
308.64	463.06	-0.39	-154.42		1.00	OSF1.50	15020.00	7266.00			OSF<1.00	Enter Major	
308.50	647.83	-123.71	-339.33		0.71	OSF1.50	18028.26	7266.00				MinPts	

Desha 4-3-4L - Plan (Def Plan)

													Fail Minor
123.88	32.81	122.90	91.07	N/A		MAS = 10.00 (m)	0.00	0.00				Surface	
123.86	32.81	122.87	91.05	N/A		MAS = 10.00 (m)	23.00	23.00				WRP	
123.88	32.81	120.99	91.05		65.26	MAS = 10.00 (m)	250.00	250.00				MinPts	
124.36	32.81	120.43	91.55		41.92	MAS = 10.00 (m)	360.00	359.97				MINPT-O-EOU	
137.16	41.85	108.93	95.30		5.00	OSF1.50	2450.00	2365.54		OSF<5.00		Enter Alert	
56.71	57.63	17.96	-0.92		1.48	OSF1.50	3140.00	2999.97			OSF<1.50	Enter Minor	
44.44	56.51	6.44	-12.07		1.17	OSF1.50	3330.00	3174.66				MinPt-O-ADP	
44.11	56.16	6.34	-12.05		1.17	OSF1.50	3340.00	3183.86				MinPt-O-SF	
43.83	55.78	6.31	-11.96		1.17	OSF1.50	3350.00	3193.05				MINPT-O-EOU	
42.97	52.97	7.33	-10.00		1.21	OSF1.50	3410.00	3248.22				MinPt-CtCt	
46.22	46.54	14.86	-0.32		1.49	OSF1.50	3540.00	3367.75			OSF>1.50	Exit Minor	
337.31	102.01	268.98	235.31		4.99	OSF1.50	5890.00	5528.47		OSF>5.00		Exit Alert	
425.79	128.78	339.60	297.00		4.99	OSF1.50	7170.00	6715.82		OSF<5.00		Enter Alert	
119.12	122.65	37.03	-3.53		1.46	OSF1.50	7740.00	7155.84			OSF<1.50	Enter Minor	
118.11	131.65	30.01	-13.54		1.34	OSF1.50	7760.00	7166.04				MinPt-CtCt	
122.68	144.87	25.77	-22.19		1.27	OSF1.50	7790.00	7180.47				MINPT-O-EOU	
125.74	148.58	26.38	-22.84		1.27	OSF1.50	7800.00	7185.05				MinPts	
156.69	161.22	48.89	-4.53		1.46	OSF1.50	7860.00	7210.00			OSF>1.50	Exit Minor	
522.34	157.95	416.71	364.39		4.98	OSF1.50	8280.00	7266.00		OSF>5.00		Exit Alert	
10174.27	151.51	10072.94	10022.76		101.38	OSF1.50	18028.26	7266.00				TD	

Buford 33-8-4L R0 mdv 27Jul22 (Def Plan)

													Warning Alert
51.00	32.81	50.02	18.19	N/A		MAS = 10.00 (m)	0.00	0.00				Surface	
51.00	32.81	50.02	18.19	N/A		MAS = 10.00 (m)	23.00	23.00				WRP	
50.37	32.81	44.73	17.55		10.61	MAS = 10.00 (m)	530.00	529.55				MinPts	
53.56	32.81	41.99	20.75		4.97	MAS = 10.00 (m)	1050.00	1039.76		OSF<5.00		Enter Alert	
54.05	32.81	41.97	21.25		4.78	MAS = 10.00 (m)	1090.00	1078.40				MINPT-O-EOU	
60.20	32.81	45.03	27.40		4.17	MAS = 10.00 (m)	1330.00	1310.22				MinPt-O-SF	
95.83	32.81	75.79	63.02		4.98	MAS = 10.00 (m)	1690.00	1657.20		OSF>5.00		Exit Alert	
692.97	131.91	604.70	561.06		7.93	OSF1.50	7400.00	6921.41				MinPt-O-SF	
645.27	194.69	515.15	450.58		4.99	OSF1.50	10330.00	7266.00		OSF<5.00		Enter Alert	
644.55	633.98	221.90	10.92		1.53	OSF1.50	18028.26	7266.00				MinPts	

Desha 4-8-2L - Plan (Def Plan)

													Warning Alert
98.39	32.81	97.40	65.58	N/A		MAS = 10.00 (m)	0.00	0.00				Surface	
98.36	32.81	97.37	65.55	N/A		MAS = 10.00 (m)	23.00	23.00				WRP	
98.36	32.81	95.45	65.55		51.72	MAS = 10.00 (m)	250.00	250.00				MinPts	
98.89	32.81	94.87	66.09		32.19	MAS = 10.00 (m)	370.00	369.96				MINPT-O-EOU	
123.62	38.14	97.87	85.48		4.95	OSF1.50	2460.00	2374.74		OSF<5.00		Enter Alert	
58.58	43.96	28.94	14.62		2.01	OSF1.50	3330.00	3174.66				MinPt-CtCt	
63.08	56.96	24.78	6.12		1.66	OSF1.50	3520.00	3349.36				MINPT-O-EOU	
68.05	63.00	25.73	5.05		1.62	OSF1.50	3610.00	3432.11				MinPt-O-ADP	
69.36	64.25	26.20	5.11		1.62	OSF1.50	3630.00	3450.50				MinPt-O-SF	
171.30	150.99	70.31	20.30		1.70	OSF1.50	7620.00	7085.51				MinPts	
166.26	144.95	69.30	21.31		1.72	OSF1.50	7640.00	7098.28				MINPT-O-EOU	
163.01	134.65	72.92	28.36		1.82	OSF1.50	7670.00	7116.66				MinPt-CtCt	
428.05	130.89	341.46	298.16		4.94	OSF1.50	8080.00	7262.62		OSF>5.00		Exit Alert	
10184.54	158.77	10078.36	10025.77		96.81	OSF1.50	18028.26	7266.00				TD	

Buford 33-7-1L R0 mdv 27Jul22 (Def Plan)

													Warning Alert
76.50	32.81	75.52	43.69	N/A		MAS = 10.00 (m)	0.00	0.00				Surface	
76.50	32.81	75.52	43.69	N/A		MAS = 10.00 (m)	23.00	23.00				WRP	
75.56	32.81	70.10	42.75		16.66	MAS = 10.00 (m)	510.00	509.64				MinPts	
75.88	32.81	69.71	43.08		14.43	MAS = 10.00 (m)	580.00	579.27				MINPT-O-EOU	
157.26	32.81	138.80	124.45		8.94	MAS = 10.00 (m)	1700.00	1666.77				MinPt-O-SF	
899.43	120.44	818.80	778.98		11.28	OSF1.50	6640.00	6218.06				MinPt-O-SF	

...Confluence 33-01N-65W (Freedom 33 Pad)\Buford 33-6-2L\Original Hole\Buford 33-6-2L R0 mdv 27Jul22

Offset Trajectory	Separation			Allow Dev. (ft)	Sep. Fact.	Controlling Rule	Reference Trajectory		Risk Level			Alert	Status
	Cl-Cl (ft)	MAS (ft)	EOU (ft)				MD (ft)	TVD (ft)	Alert	Minor	Major		
	779.81	234.75	622.98	545.06	5.00	OSF1.50	11300.00	7266.00	OSF<5.00			Enter Alert	
	747.41	436.53	456.06	310.87	2.57	OSF1.50	14680.00	7266.00				MinPt-CiCt	
	803.47	647.10	371.74	156.36	1.86	OSF1.50	18028.26	7266.00				MinPts	

Desha 4-9-1L - Plan (Def Plan)													Warning Alert
149.38	32.81	148.39	116.57	N/A		MAS = 10.00 (m)	0.00	0.00				Surface	
149.36	32.81	148.37	116.55	N/A		MAS = 10.00 (m)	23.00	23.00				WRP	
149.36	32.81	146.46	116.55	78.81		MAS = 10.00 (m)	250.00	250.00				MinPts	
149.81	32.81	145.98	117.00	52.33		MAS = 10.00 (m)	350.00	349.98				MINPT-O-EOU	
150.45	46.19	119.33	104.26	4.96		OSF1.50	2650.00	2549.43	OSF<5.00			Enter Alert	
84.50	59.30	44.64	25.20	2.15		OSF1.50	3510.00	3340.17				MinPt-O-SF	
84.37	59.19	44.59	25.18	2.15		OSF1.50	3520.00	3349.36				MinPt-O-ADP	
84.17	58.94	44.55	25.23	2.15		OSF1.50	3540.00	3367.75				MINPT-O-EOU	
84.04	58.35	44.81	25.68	2.17		OSF1.50	3580.00	3404.53				MinPt-CiCt	
258.55	78.27	206.04	180.28	5.00		OSF1.50	5390.00	5068.74	OSF>5.00			Exit Alert	
436.91	114.34	360.35	322.57	5.77		OSF1.50	7070.00	6620.75				MinPt-O-SF	
314.10	95.21	250.29	218.88	4.98		OSF1.50	7262.29	6801.24	OSF<5.00			Enter Alert	
219.07	128.18	133.29	90.89	2.57		OSF1.50	7490.00	6993.38				MinPt-CiCt	
219.75	131.06	132.05	88.70	2.52		OSF1.50	7510.00	7008.52				MINPT-O-EOU	
220.74	132.32	132.20	88.42	2.51		OSF1.50	7520.00	7015.97				MinPt-O-ADP	
222.15	133.45	132.85	88.70	2.50		OSF1.50	7530.00	7023.33				MinPt-O-SF	
451.81	137.75	359.64	314.05	4.94		OSF1.50	7920.00	7230.53	OSF>5.00			Exit Alert	
10224.43	149.47	10124.45	10074.96	103.28		OSF1.50	18028.26	7266.00				TD	

Buford 33-9-3L MWD 0' to 17367' - PR (Def Survey)													Warning Alert
151.28	32.81	149.47	118.48	N/A		MAS = 10.00 (m)	0.00	0.00				Surface	
151.28	32.81	149.47	118.47	N/A		MAS = 10.00 (m)	23.00	23.00				WRP	
150.42	32.81	146.74	117.61	79.86		MAS = 10.00 (m)	270.00	270.00				MinPts	
150.54	32.81	146.57	117.73	69.00		MAS = 10.00 (m)	300.00	300.00				MINPT-O-EOU	
244.16	32.81	233.23	211.36	26.58		MAS = 10.00 (m)	1000.00	991.46				MinPt-O-SF	
311.97	32.81	298.46	279.16	26.53		MAS = 10.00 (m)	1260.00	1242.60				MinPt-O-SF	
379.78	32.81	363.67	346.97	26.44		MAS = 10.00 (m)	1520.00	1493.74				MinPt-O-SF	
411.53	32.81	394.21	378.72	26.41		MAS = 10.00 (m)	1640.00	1609.27				MinPt-O-SF	
1078.29	80.84	1023.86	997.45	20.38		OSF1.50	5040.00	4746.93				MinPt-O-SF	
1352.26	106.87	1280.49	1245.40	19.25		OSF1.50	6360.00	5960.61				MinPt-O-SF	
1443.29	116.24	1365.26	1327.05	18.86		OSF1.50	6820.00	6383.56				MinPt-O-SF	
1488.59	118.64	1408.96	1369.95	19.06		OSF1.50	7100.00	6649.44				MinPt-O-SF	
1492.16	118.93	1412.34	1373.23	19.06		OSF1.50	7130.00	6678.01				MinPt-O-SF	
1448.34	129.58	1361.42	1318.76	16.96		OSF1.50	8270.00	7266.00				MinPts	
1426.72	131.00	1338.85	1295.72	16.52		OSF1.50	8560.00	7266.00				MinPt-CiCt	
1426.80	131.24	1338.77	1295.56	16.49		OSF1.50	8580.00	7266.00				MINPT-O-EOU	
1427.57	132.16	1338.93	1295.41	16.38		OSF1.50	8640.00	7266.00				MinPt-O-ADP	
1462.81	165.78	1351.76	1297.03	13.35		OSF1.50	9740.00	7266.00				MinPt-CiCt	
1434.70	198.31	1301.96	1236.39	10.93		OSF1.50	10410.00	7266.00				MinPt-CiCt	
1435.49	200.67	1301.17	1234.82	10.80		OSF1.50	10480.00	7266.00				MINPT-O-EOU	
1436.34	201.66	1301.37	1234.69	10.76		OSF1.50	10510.00	7266.00				MinPt-O-ADP	
1440.18	206.93	1301.65	1233.25	10.51		OSF1.50	10610.00	7266.00				MINPT-O-EOU	
1441.94	268.67	1262.29	1173.27	8.09		OSF1.50	11630.00	7266.00				MinPt-CiCt	
1421.38	305.85	1216.94	1115.52	7.00		OSF1.50	12230.00	7266.00				MinPt-CiCt	
1432.81	341.45	1204.63	1091.35	6.32		OSF1.50	12830.00	7266.00				MINPT-O-EOU	
1443.00	353.22	1206.99	1089.78	6.15		OSF1.50	13050.00	7266.00				MinPt-O-ADP	
1418.22	426.85	1133.12	991.37	5.00		OSF1.50	14070.00	7266.00	OSF<5.00			Enter Alert	
1412.51	445.93	1114.69	966.58	4.76		OSF1.50	14380.00	7266.00				MinPt-CiCt	
1413.25	448.44	1113.76	964.81	4.74		OSF1.50	14450.00	7266.00				MINPT-O-EOU	
1414.08	449.41	1113.94	964.67	4.73		OSF1.50	14480.00	7266.00				MinPt-O-ADP	
1432.25	457.42	1126.77	974.83	4.71		OSF1.50	14730.00	7266.00				MinPt-O-SF	
1446.99	480.75	1125.96	966.24	4.52		OSF1.50	14950.00	7266.00				MINPT-O-EOU	
1433.32	561.70	1058.32	871.62	3.83		OSF1.50	16100.00	7266.00				MinPt-CiCt	
1434.57	565.86	1056.78	868.69	3.81		OSF1.50	16200.00	7266.00				MINPT-O-EOU	
1437.82	570.23	1057.13	867.59	3.79		OSF1.50	16290.00	7266.00				MINPT-O-EOU	
1443.31	577.14	1058.02	866.17	3.76		OSF1.50	16410.00	7266.00				MinPt-O-ADP	
1442.23	652.24	1006.87	789.99	3.32		OSF1.50	17430.00	7266.00				MinPt-CiCt	
1449.00	672.02	1000.46	776.99	3.24		OSF1.50	17770.00	7266.00				MINPT-O-EOU	
1451.30	674.67	1000.99	776.63	3.23		OSF1.50	17830.00	7266.00				MinPt-O-ADP	
1459.82	684.79	1002.75	775.03	3.20		OSF1.50	17980.00	7266.00				MinPts	
1462.83	683.61	1006.56	779.22	3.21		OSF1.50	18028.26	7266.00				TD	

Buford 33-8-2L R0 mdv 27Jul22 (Def Plan)													Warning Alert
153.42	32.81	152.43	120.61	N/A		MAS = 10.00 (m)	0.00	0.00				Surface	
153.42	32.81	152.43	120.61	N/A		MAS = 10.00 (m)	23.00	23.00				WRP	
153.42	32.81	150.54	120.61	80.69		MAS = 10.00 (m)	250.00	250.00				MinPts	
153.57	32.81	150.40	120.76	69.80		MAS = 10.00 (m)	280.00	280.00				MINPT-O-EOU	
267.87	32.81	249.43	235.06	15.29		MAS = 10.00 (m)	1700.00	1666.77				MinPt-O-SF	
589.50	54.49	552.84	535.01	16.50		OSF1.50	3660.00	3478.08				MinPt-O-SF	
1273.57	121.68	1192.12	1151.89	15.82		OSF1.50	6790.00	6355.98				MinPt-O-SF	
1101.65	131.71	1013.52	969.94	12.63		OSF1.50	8890.00	7266.00				MinPt-CiCt	
1102.24	133.47	1012.93	968.77	12.47		OSF1.50	8960.00	7266.00				MINPT-O-EOU	
1156.86	348.30	924.33	808.56	4.99		OSF1.50	13130.00	7266.00	OSF<5.00			Enter Alert	
1100.75	654.79	663.90	445.96	2.52		OSF1.50	18020.00	7266.00				MinPts	
1100.73	654.72	663.92	446.01	2.52		OSF1.50	18028.26	7266.00				MinPt-CiCt	

Buford 33-10-4L MWD 0' to 17484' - PR (Def Survey)													Warning Alert
157.00	32.81	155.19	124.19	N/A	MAS = 10.00 (m)	0.00	0.00					Surface	
156.99	32.81	155.18	124.19	N/A	MAS = 10.00 (m)	23.00	23.00					WRP	
156.11	32.81	152.57	123.30	89.41	MAS = 10.00 (m)	270.00	270.00					MinPts	
156.24	32.81	152.42	123.43	76.77	MAS = 10.00 (m)	300.00	300.00					MINPT-O-EOU	
297.13	32.81	284.04	264.32	26.20	MAS = 10.00 (m)	1220.00	1203.97					MinPt-O-SF	
393.22	32.81	376.59	360.41	26.43	MAS = 10.00 (m)	1580.00	1551.58					MinPt-O-SF	
409.50	32.81	392.26	376.69	26.42	MAS = 10.00 (m)	1640.00	1609.27					MinPt-O-SF	
928.80	52.58	893.21	876.22	27.28	OSF1.50	3580.00	3404.53					MinPt-O-SF	
1374.64	84.32	1317.90	1290.33	24.90	OSF1.50	5250.00	4940.02					MinPt-O-SF	
1814.86	114.92	1737.71	1699.94	24.00	OSF1.50	6817.89	6381.62					MinPt-O-SF	
1834.74	116.25	1756.70	1718.48	23.98	OSF1.50	6900.00	6458.25					MinPt-O-SF	
1921.58	127.73	1835.90	1793.85	22.83	OSF1.50	7870.00	7213.73					MinPts	
1895.57	129.08	1808.98	1766.49	22.29	OSF1.50	8270.00	7266.00					MinPt-O-SF	
1877.44	131.13	1789.49	1746.31	21.72	OSF1.50	8540.00	7266.00					MinPt-CiCt	
1877.55	131.41	1789.41	1746.14	21.68	OSF1.50	8560.00	7266.00					MINPT-O-EOU	
1877.67	131.55	1789.44	1746.12	21.66	OSF1.50	8570.00	7266.00					MinPt-O-ADP	
1880.82	154.24	1777.46	1726.59	18.47	OSF1.50	9430.00	7266.00					MinPt-CiCt	
1882.52	161.37	1774.40	1721.14	17.66	OSF1.50	9630.00	7266.00					MINPT-O-EOU	

Offset Trajectory	Separation			Allow Dev. (ft)	Sep. Fact.	Controlling Rule	Reference Trajectory		Risk Level			Alert	Status
	Cl-Cl (ft)	MAS (ft)	EOU (ft)				MD (ft)	TVD (ft)	Alert	Minor	Major		
Buford 33-10-2L R0 mdv 27Jul22 (Def Plan)	1883.89	163.02	1774.67	1720.88	17.49	OSF1.50	9880.00	7266.00				MinPt-O-ADP	
	1872.56	244.83	1708.81	1627.73	11.54	OSF1.50	11210.00	7266.00				MinPt-CiCt	
	1874.07	249.23	1707.38	1624.84	11.34	OSF1.50	11320.00	7266.00				MINPT-O-EQU	
	1874.96	250.57	1707.38	1624.39	11.29	OSF1.50	11350.00	7266.00				MINPT-O-EQU	
	1883.84	303.01	1681.30	1580.83	9.37	OSF1.50	12160.00	7266.00				MinPt-CiCt	
	1871.48	388.91	1611.67	1482.57	7.24	OSF1.50	13500.00	7266.00				MinPt-CiCt	
	1871.14	411.14	1596.51	1460.00	6.85	OSF1.50	13840.00	7266.00				MinPt-CiCt	
	1886.80	443.99	1590.27	1442.81	6.39	OSF1.50	14400.00	7266.00				MINPT-O-EQU	
	1888.62	509.58	1548.36	1379.03	5.57	OSF1.50	15320.00	7266.00				MinPt-CiCt	
	1873.44	563.21	1497.44	1310.23	5.00	OSF1.50	16050.00	7266.00	OSF<5.00			Enter Alert	
	1864.79	578.64	1478.49	1286.15	4.84	OSF1.50	16350.00	7266.00				MinPt-CiCt	
	1867.14	586.12	1475.85	1281.02	4.79	OSF1.50	16510.00	7266.00				MINPT-O-EQU	
	1870.33	591.10	1475.72	1279.23	4.76	OSF1.50	16600.00	7266.00				MINPT-O-EQU	
	1880.15	653.85	1443.71	1226.29	4.32	OSF1.50	17460.00	7266.00				MinPt-CiCt	
	1886.69	685.61	1429.08	1201.08	4.13	OSF1.50	17960.00	7266.00				MinPts	
	1889.29	685.62	1431.68	1203.67	4.14	OSF1.50	18028.26	7266.00				TD	
Warning Alert													
Champlin 365 Amoco Unit 1 Blind 0' to 8044' - DA (Def Survey)	167.03	32.81	166.04	134.22	N/A	MAS = 10.00 (m)	0.00	0.00				Surface	
	167.03	32.81	166.04	134.22	N/A	MAS = 10.00 (m)	23.00	23.00				WRP	
	167.03	32.81	164.16	134.22	87.90	MAS = 10.00 (m)	250.00	250.00				MinPts	
	167.12	32.81	164.05	134.31	79.88	MAS = 10.00 (m)	270.00	270.00				MINPT-O-EQU	
	513.75	32.81	494.15	480.94	27.54	MAS = 10.00 (m)	1760.00	1724.07				MinPt-O-SF	
	1854.02	118.20	1774.89	1735.82	23.71	OSF1.50	6800.00	6365.17				MinPt-O-EQU	
	2152.24	125.29	2068.38	2026.95	25.96	OSF1.50	8460.00	7266.00				MinPt-O-SF	
	2156.42	647.98	1724.10	1508.44	5.00	OSF1.50	17860.00	7266.00	OSF<5.00			Enter Alert	
	2156.39	658.20	1717.26	1498.19	4.92	OSF1.50	18020.00	7266.00				MinPt-CiCt	
	2156.39	658.54	1717.04	1497.85	4.92	OSF1.50	18028.26	7266.00				MinPts	
Warning Alert													
Glen Young 2 Blind 0' to 7868' - PA (Def Survey)	544.75	32.81	542.94	511.94	N/A	MAS = 10.00 (m)	0.00	0.00				Surface	
	544.49	32.81	542.65	511.68	16633.05	MAS = 10.00 (m)	10.00	10.00				MinPt-O-SF	
	544.42	32.81	542.53	511.61	6630.79	MAS = 10.00 (m)	23.00	23.00				WRP	
	323.26	98.29	257.13	224.97	5.00	OSF1.50	1670.00	1638.04	OSF<5.00			Enter Alert	
	298.24	116.07	220.33	182.17	3.89	OSF1.50	1970.00	1922.61				MinPt-CiCt	
	299.36	119.64	219.07	179.73	3.78	OSF1.50	2030.00	1978.66				MINPT-O-EQU	
	300.85	121.41	219.37	179.43	3.75	OSF1.50	2060.00	2006.56				MinPt-O-ADP	
	314.50	129.01	227.96	185.49	3.68	OSF1.50	2190.00	2126.48				MinPt-O-SF	
	637.23	192.48	508.38	444.75	5.00	OSF1.50	3340.00	3183.86	OSF>5.00			Exit Alert	
	1462.12	439.83	1168.37	1022.29	5.00	OSF1.50	8610.00	7266.00	OSF<5.00			Enter Alert	
	1426.57	441.93	1131.42	984.65	4.85	OSF1.50	8930.00	7266.00				MinPt-CiCt	
	1426.61	442.00	1131.40	984.60	4.85	OSF1.50	8940.00	7266.00				MinPts	
	1426.88	442.15	1131.58	984.73	4.85	OSF1.50	8960.00	7266.00				MinPt-O-SF	
	1476.20	444.68	1179.21	1031.52	4.99	OSF1.50	9310.00	7266.00	OSF>5.00			Exit Alert	
	9208.97	448.15	8909.67	8760.82	30.93	OSF1.50	18028.26	7266.00				TD	
Warning Alert													
Strawder 1 Blind 0' to 8060' - TA (Def Survey)	8141.95	32.81	8140.14	8109.15	N/A	MAS = 10.00 (m)	0.00	0.00				Surface	
	8141.79	32.81	8139.95	8108.98	304122.94	MAS = 10.00 (m)	23.00	23.00				WRP	
	8141.65	32.81	8133.52	8108.84	1289.44	MAS = 10.00 (m)	250.00	250.00				MinPts	
	8147.89	92.04	8085.92	8055.85	135.43	OSF1.50	1590.00	1561.21				MINPT-O-EQU	
	8150.80	95.61	8086.46	8055.20	130.32	OSF1.50	1650.00	1618.86				MinPt-O-ADP	
	1584.95	476.94	1266.45	1108.01	5.00	OSF1.50	15400.00	7266.00	OSF<5.00			Enter Alert	
	697.71	593.19	301.71	104.51	1.76	OSF1.50	16820.00	7266.00				MinPts	
	1392.53	483.81	1069.46	908.72	4.33	OSF1.50	18028.26	7266.00				TD	
Warning Alert													
Robin 9-7HZ IFR1+MS 0' to 18107' - PR (Def Survey)	6018.75	32.81	6016.94	5985.95	N/A	MAS = 10.00 (m)	0.00	0.00				Surface	
	6018.68	32.81	6016.86	5985.87	705624.35	MAS = 10.00 (m)	20.00	20.00				MinPt-O-SF	
	6018.67	32.81	6016.85	5985.86	797660.79	MAS = 10.00 (m)	23.00	23.00				WRP	
	6015.75	79.94	5961.86	5935.82	115.47	OSF1.50	1350.00	1329.54				MinPt-CiCt	
	6018.10	95.43	5953.88	5922.67	96.40	OSF1.50	1610.00	1580.44				MINPT-O-EQU	
	6021.03	99.00	5954.43	5922.03	92.90	OSF1.50	1670.00	1638.04				MinPt-O-ADP	
	1558.57	469.00	1245.37	1089.57	5.00	OSF1.50	13360.00	7266.00	OSF<5.00			Enter Alert	
	814.30	533.61	458.02	280.69	2.29	OSF1.50	14690.00	7266.00				MinPts	
	1560.39	471.73	1245.37	1088.66	4.97	OSF1.50	16020.00	7266.00	OSF>5.00			Exit Alert	
	3437.18	451.55	3135.60	2985.62	11.45	OSF1.50	18028.26	7266.00				TD	
Warning Alert													
Champlin 365 Amoco Unit A 2 Blind 0' to 8100' - PA (Def Survey)	12540.97	169.85	12427.41	12371.12	111.39	OSF1.50	0.00	0.00				MinPt-O-SF	
	12527.68	169.64	12414.26	12358.04	111.41	OSF1.50	23.00	23.00				WRP	
	11265.64	120.29	11185.12	11145.35	141.62	OSF1.50	4580.00	4323.98				MinPt-O-ADP	
	11265.62	120.27	11185.11	11145.35	141.65	OSF1.50	4590.00	4333.18				MINPT-O-EQU	
	11265.61	120.25	11185.12	11145.37	141.68	OSF1.50	4600.00	4342.37				MinPt-CiCt	
	948.17	288.94	755.21	659.22	4.93	OSF1.50	18028.26	7266.00	OSF<5.00			Enter Alert	
Warning Alert													
Robin 9-6HZ IFR1+MS 0' to 18139' - PR (Def Survey)	12529.18	171.72	12414.37	12357.46	110.07	OSF1.50	0.00	0.00				MinPt-O-SF	
	12515.79	171.50	12401.13	12344.29	110.09	OSF1.50	23.00	23.00				MinPt-O-SF	
	11268.07	123.09	11185.68	11144.98	138.41	OSF1.50	4520.00	4268.82				MinPt-O-ADP	
	11268.05	123.06	11185.68	11144.99	138.44	OSF1.50	4530.00	4278.01				MINPT-O-EQU	
	11268.04	123.01	11185.70	11145.03	138.50	OSF1.50	4550.00	4296.40				MinPt-CiCt	
	1216.72	368.83	970.51	847.90	4.96	OSF1.50	17910.00	7266.00	OSF<5.00			Enter Alert	
Warning Alert													

...Confluence 33-01N-65W (Freedom 33 Pad)\Buford 33-6-2L\Original Hole\Buford 33-6-2L R0 mdv 27Jul22

Offset Trajectory	Separation			Allow Dev. (ft)	Sep. Fact.	Controlling Rule	Reference Trajectory		Risk Level			Alert	Status
	Cl-Ct (ft)	MAS (ft)	EOU (ft)				MD (ft)	TVD (ft)	Alert	Minor	Major		
	1124.03	394.13	860.95	729.90	4.28	OSF1.50	18028.26	7266.00				MinPts	
Robin 9-5HZ IFR1+MS 0' to 18381' - PR (Def Survey)													Warning Alert
	12589.30	175.51	12471.97	12413.79	108.19	OSF1.50	0.00	0.00				MinPt-O-SF	
	12575.64	175.29	12458.45	12400.34	108.21	OSF1.50	23.00	23.00				MinPt-O-SF	
	11291.84	127.59	11206.45	11164.24	133.77	OSF1.50	4610.00	4351.57				MinPt-O-ADP	
	11291.82	127.57	11206.44	11164.24	133.79	OSF1.50	4620.00	4360.76				MINPT-O-EOU	
	11291.80	127.53	11206.45	11164.27	133.84	OSF1.50	4640.00	4379.15				MinPt-CtCt	
	1426.27	430.80	1138.74	995.47	4.97	OSF1.50	17890.00	7266.00	OSF<5.00			Enter Alert	
	1336.35	456.65	1031.59	879.71	4.40	OSF1.50	18028.26	7266.00				MinPts	
Necklein 1 Blind 0' to 8061' - TA (Def Survey)													Warning Alert
	6285.37	32.81	6283.56	6252.56	N/A	MAS = 10.00 (m)	0.00	0.00				Surface	
	6285.24	32.81	6283.41	6252.43	362455.69	MAS = 10.00 (m)	23.00	23.00				WRP	
	6185.26	107.32	6113.18	6077.94	87.74	OSF1.50	1840.00	1800.09				MinPt-CtCt	
	6187.71	114.70	6110.71	6073.01	82.05	OSF1.50	1970.00	1922.61				MINPT-O-EOU	
	6191.00	118.66	6111.35	6072.34	79.31	OSF1.50	2040.00	1987.97				MinPt-O-ADP	
	1592.59	479.22	1272.57	1113.37	5.00	OSF1.50	13300.00	7266.00	OSF<5.00			Enter Alert	
	1366.76	518.55	1020.53	848.22	3.96	OSF1.50	14120.00	7266.00				MinPt-CtCt	
	1367.15	519.63	1020.19	847.52	3.95	OSF1.50	14150.00	7266.00				MINPT-O-EOU	
	1367.42	519.97	1020.24	847.45	3.95	OSF1.50	14160.00	7266.00				MinPt-O-ADP	
	1370.60	521.90	1022.13	848.70	3.95	OSF1.50	14220.00	7266.00				MinPt-O-SF	
	1731.17	521.20	1383.17	1209.97	4.99	OSF1.50	15180.00	7266.00	OSF>5.00			Exit Alert	
	4142.71	482.16	3820.74	3660.55	12.93	OSF1.50	18028.26	7266.00				TD	
Glen Young 1 Blind 0' to 8050' - PA (Def Survey)													Warning Alert
	8970.34	32.81	8968.53	8937.53	N/A	MAS = 10.00 (m)	0.00	0.00				Surface	
	8970.27	32.81	8968.45	8937.47	970397.94	MAS = 10.00 (m)	20.00	20.00				MinPt-O-SF	
	8970.27	32.81	8968.45	8937.46	984460.25	MAS = 10.00 (m)	23.00	23.00				WRP	
	8913.05	99.48	8846.13	8813.57	136.87	OSF1.50	1690.00	1657.20				MinPt-CtCt	
	8915.63	106.80	8843.89	8808.83	127.10	OSF1.50	1820.00	1781.13				MINPT-O-EOU	
	8918.53	110.21	8844.53	8808.33	123.16	OSF1.50	1880.00	1837.93				MinPt-O-ADP	
	1781.12	536.76	1422.75	1244.36	4.99	OSF1.50	16170.00	7266.00	OSF<5.00			Enter Alert	
	1557.08	600.85	1155.98	956.23	3.89	OSF1.50	17030.00	7266.00				MinPt-CtCt	
	1557.73	603.12	1155.11	954.61	3.88	OSF1.50	17080.00	7266.00				MINPT-O-EOU	
	1558.44	603.95	1155.27	954.48	3.88	OSF1.50	17100.00	7266.00				MinPt-O-ADP	
	1562.93	606.51	1158.06	956.42	3.87	OSF1.50	17170.00	7266.00				MinPt-O-SF	
	1847.00	598.76	1447.29	1248.24	4.64	OSF1.50	18028.26	7266.00				TD	
Robin 9-4HZ IFR1+MS 0' to 18437' - PR (Def Survey)													Warning Alert
	12457.69	172.29	12342.50	12285.40	109.07	OSF1.50	0.00	0.00				MinPt-O-SF	
	12444.28	172.07	12329.24	12272.21	109.10	OSF1.50	23.00	23.00				WRP	
	11256.31	127.05	11171.28	11129.25	133.92	OSF1.50	4320.00	4084.92				MinPt-O-ADP	
	11256.29	127.03	11171.27	11129.26	133.95	OSF1.50	4330.00	4094.12				MINPT-O-EOU	
	11256.27	126.97	11171.29	11129.30	134.00	OSF1.50	4350.00	4112.51				MinPt-CtCt	
	1587.57	479.46	1267.60	1108.11	4.97	OSF1.50	17990.00	7266.00	OSF<5.00			Enter Alert	
	1566.59	485.54	1242.57	1081.06	4.85	OSF1.50	18028.26	7266.00				MinPts	
Desha 4-10-3L - Plan (Def Plan)													Pass
	174.88	32.81	173.89	142.07	N/A	MAS = 10.00 (m)	0.00	0.00				Surface	
	174.86	32.81	173.87	142.05	N/A	MAS = 10.00 (m)	23.00	23.00				WRP	
	174.86	32.81	171.99	142.05	92.35	MAS = 10.00 (m)	250.00	250.00				MinPts	
	175.29	32.81	171.56	142.48	63.50	MAS = 10.00 (m)	340.00	339.99				MINPT-O-EOU	
	194.45	49.97	160.82	144.49	5.92	OSF1.50	3030.00	2898.83				MinPt-CtCt	
	194.61	50.49	160.63	144.12	5.87	OSF1.50	3080.00	2944.80				MINPT-O-EOU	
	194.78	50.68	160.66	144.09	5.85	OSF1.50	3100.00	2963.19				MinPt-O-ADP	
	197.19	51.78	162.34	145.41	5.79	OSF1.50	3230.00	3082.72				MinPt-O-SF	
	542.54	124.66	459.11	417.88	6.57	OSF1.50	7640.00	7098.28				MinPt-CtCt	
	543.15	126.67	458.37	416.48	6.47	OSF1.50	7670.00	7116.66				MINPT-O-EOU	
	543.68	127.32	458.47	416.36	6.44	OSF1.50	7680.00	7122.58				MinPt-O-ADP	
	557.67	133.04	468.65	424.63	6.32	OSF1.50	7780.00	7175.77				MinPt-O-SF	
	10218.22	142.79	10122.70	10075.43	108.08	OSF1.50	18028.26	7266.00				TD	
Desha 4-11-2L - Plan (Def Plan)													Pass
	200.37	32.81	199.39	167.56	N/A	MAS = 10.00 (m)	0.00	0.00				Surface	
	200.36	32.81	199.37	167.55	N/A	MAS = 10.00 (m)	23.00	23.00				WRP	
	200.36	32.81	197.49	167.55	105.89	MAS = 10.00 (m)	250.00	250.00				MinPts	
	200.67	32.81	197.14	167.86	78.30	MAS = 10.00 (m)	320.00	319.99				MINPT-O-EOU	
	280.46	41.58	252.42	238.88	10.33	OSF1.50	2590.00	2494.27				MinPt-CtCt	
	280.80	42.59	252.08	238.21	10.09	OSF1.50	2660.00	2558.63				MINPT-O-EOU	
	281.14	43.01	252.14	238.13	10.00	OSF1.50	2690.00	2586.21				MinPt-O-ADP	
	300.43	48.68	267.65	251.75	9.42	OSF1.50	3140.00	2999.97				MinPt-O-SF	
	843.29	121.96	761.66	721.33	10.44	OSF1.50	7520.00	7015.97				MinPt-CtCt	
	843.47	122.60	761.41	720.87	10.39	OSF1.50	7540.00	7030.60				MINPT-O-EOU	
	843.70	122.90	761.44	720.80	10.37	OSF1.50	7550.00	7037.79				MinPt-O-ADP	
	855.13	126.26	770.64	728.88	10.23	OSF1.50	7680.00	7122.58				MinPt-O-SF	
	10252.94	138.44	10160.32	10114.50	111.87	OSF1.50	18028.26	7266.00				TD	
Desha 4-4-4L - Plan (Def Plan)													Pass
	225.87	32.81	224.89	193.06	N/A	MAS = 10.00 (m)	0.00	0.00				Surface	
	225.86	32.81	224.87	193.05	N/A	MAS = 10.00 (m)	23.00	23.00				WRP	
	225.86	32.81	222.99	193.05	119.44	MAS = 10.00 (m)	250.00	250.00				MinPts	
	226.12	32.81	222.69	193.32	91.82	MAS = 10.00 (m)	310.00	310.00				MINPT-O-EOU	
	338.79	35.56	314.76	303.23	14.65	OSF1.50	2260.00	2190.85				MinPt-CtCt	
	339.00	36.18	314.55	302.81	14.40	OSF1.50	2310.00	2236.82				MINPT-O-EOU	
	339.31	36.56	314.60	302.74	14.26	OSF1.50	2340.00	2264.40				MinPt-O-ADP	
	378.55	44.82	348.35	333.74	12.92	OSF1.50	2990.00	2862.05				MinPt-O-SF	
	380.64	45.06	350.27	335.58	12.92	OSF1.50	3010.00	2880.44				MinPt-O-SF	
	1119.57	118.96	1039.94	1000.62	14.22	OSF1.50	7680.00	7122.58				MinPt-CtCt	
	1119.80	119.86	1039.57	999.94	14.12	OSF1.50	7710.00	7139.70				MINPT-O-EOU	
	1120.26	120.44	1039.64	999.82	14.05	OSF1.50	7730.00	7150.57				MinPt-O-ADP	
	1157.34	128.07	1071.63	1029.27	13.65	OSF1.50	8040.00	7257.75				MinPt-O-SF	
	10257.66	135.81	10166.79	10121.85	114.11	OSF1.50	18028.26	7266.00				TD	
Desha 4-12-1L - Plan (Def Plan)													Pass
	251.39	32.81	250.40	218.58	N/A	MAS = 10.00 (m)	0.00	0.00				Surface	
	251.37	32.81	250.39	218.57	N/A	MAS = 10.00 (m)	23.00	23.00				WRP	

...Confluence 33-01N-65W (Freedom 33 Pad)\Buford 33-6-2L\Original Hole\Buford 33-6-2L R0 mdv 27Jul22

Offset Trajectory	Separation			Allow Dev. (ft)	Sep. Fact.	Controlling Rule	Reference Trajectory		Risk Level			Alert	Status
	Cl-Ct (ft)	MAS (ft)	EOU (ft)				MD (ft)	TVD (ft)	Alert	Minor	Major		
Desha 4-13-3L - Plan (Def Plan)	251.37	32.81	248.51	218.57	132.99	MAS = 10.00 (m)	250.00	250.00				MinPts	
	251.58	32.81	248.24	218.77	106.43	MAS = 10.00 (m)	300.00	300.00				MINPT-O-EQU	
	383.35	34.30	360.15	349.04	17.22	OSF1.50	2190.00	2126.48				MINPT-O-EQU	
	383.64	34.66	360.20	348.98	17.04	OSF1.50	2220.00	2154.07				MinPt-O-SF	
	451.10	46.37	419.86	404.73	14.88	OSF1.50	3110.00	2972.38				MinPt-CtCt	
	1241.31	117.82	1162.43	1123.49	15.92	OSF1.50	7250.00	6790.05				MinPt-CtCt	
	1241.48	118.61	1162.07	1122.86	15.82	OSF1.50	7280.00	6817.25				MINPT-O-EQU	
	1241.87	119.08	1162.15	1122.79	15.76	OSF1.50	7300.00	6835.15				MinPt-O-SF	
	1249.84	120.97	1168.86	1128.86	15.61	OSF1.50	7430.00	6946.06				MinPt-O-SF	
	10313.57	135.32	10223.03	10178.25	115.15	OSF1.50	18028.26	7266.00				TD	
	Pass												
	273.24	32.81	272.26	240.43	N/A	MAS = 10.00 (m)	0.00	0.00				Surface	
	273.23	32.81	272.25	240.42	N/A	MAS = 10.00 (m)	23.00	23.00				WRP	
Desha 4-5-4L - Plan (Def Plan)	273.23	32.81	270.36	240.42	144.60	MAS = 10.00 (m)	250.00	250.00				MinPts	
	273.38	32.81	270.14	240.57	120.67	MAS = 10.00 (m)	290.00	290.00				MINPT-O-EQU	
	531.16	42.56	502.46	488.60	19.13	OSF1.50	2950.00	2825.27				MinPt-O-SF	
	1501.63	100.30	1434.44	1401.33	22.66	OSF1.50	6900.00	6458.25				MinPt-O-SF	
	1559.73	114.51	1483.06	1445.22	20.59	OSF1.50	7450.00	6962.13				MINPT-O-EQU	
	1560.30	115.21	1483.16	1445.09	20.48	OSF1.50	7480.00	6985.68				MinPt-O-SF	
	1586.49	119.60	1506.42	1466.88	20.05	OSF1.50	7830.00	7198.07				MinPt-O-SF	
	1634.14	122.84	1551.91	1511.29	20.10	OSF1.50	8160.00	7266.00				MinPt-O-SF	
	10331.07	135.21	10240.60	10195.85	115.44	OSF1.50	18028.26	7266.00				TD	
	Pass												
	298.74	32.81	297.75	265.93	N/A	MAS = 10.00 (m)	0.00	0.00				Surface	
	298.73	32.81	297.74	265.92	N/A	MAS = 10.00 (m)	23.00	23.00				WRP	
	298.73	32.81	295.86	265.92	158.14	MAS = 10.00 (m)	250.00	250.00				MinPts	
Desha 4-10-2L MWD 0' to 16971' - PR (Def Survey)	298.89	32.81	295.65	266.08	132.11	MAS = 10.00 (m)	290.00	290.00				MINPT-O-EQU	
	509.43	32.81	489.86	476.62	27.37	MAS = 10.00 (m)	1800.00	1762.13				MinPt-O-SF	
	2075.16	101.19	2007.37	1973.97	31.05	OSF1.50	6900.00	6458.25				MinPt-O-SF	
	2106.25	102.74	2037.43	2003.51	31.03	OSF1.50	7000.00	6553.60				MinPt-O-SF	
	2287.49	121.20	2206.36	2166.29	28.53	OSF1.50	8440.00	7266.00				MinPt-O-SF	
	10420.32	141.57	10325.61	10278.75	111.17	OSF1.50	18028.26	7266.00				TD	
	Pass												
	324.38	32.81	322.57	291.57	N/A	MAS = 10.00 (m)	0.00	0.00				Surface	
	324.23	32.81	322.42	291.42	N/A	MAS = 10.00 (m)	23.00	23.00				MinPts	
	315.52	32.81	306.07	282.71	41.07	MAS = 10.00 (m)	830.00	826.05				MinPts	
	315.69	32.81	305.92	282.88	39.46	MAS = 10.00 (m)	860.00	855.40				MINPT-O-EQU	
	393.78	32.81	374.69	360.97	22.43	MAS = 10.00 (m)	1710.00	1676.33				MinPt-O-SF	
	520.68	38.79	494.29	481.89	20.94	OSF1.50	2570.00	2475.88				MinPt-O-SF	
Desha 4-15-1 MWD 0' to 11504' - PR (Def Survey)	652.92	45.95	621.76	606.97	22.03	OSF1.50	3070.00	2935.61				MinPt-O-SF	
	755.88	52.30	720.47	703.57	22.32	OSF1.50	3420.00	3257.41				MinPt-O-SF	
	822.75	57.04	784.19	765.71	22.22	OSF1.50	3710.00	3524.06				MinPt-O-SF	
	1054.40	69.93	1007.24	984.47	23.11	OSF1.50	4500.00	4250.43				MinPt-O-SF	
	1125.86	74.46	1075.69	1051.41	23.15	OSF1.50	4780.00	4507.87				MinPt-O-SF	
	1318.63	85.55	1261.06	1233.07	23.53	OSF1.50	5440.00	5114.71				MinPt-O-SF	
	1498.19	95.21	1434.18	1402.98	23.98	OSF1.50	6000.00	5629.61				MinPt-O-SF	
	1558.23	99.56	1491.32	1458.67	23.84	OSF1.50	6230.00	5841.08				MinPt-O-SF	
	1704.56	107.77	1632.18	1596.79	24.06	OSF1.50	6730.00	6300.81				MinPt-O-SF	
	1824.67	120.25	1743.96	1704.41	23.05	OSF1.50	7200.00	6743.91				MinPts	
	1858.38	126.56	1773.47	1731.82	22.29	OSF1.50	7770.00	7170.96				MinPt-O-SF	
	1862.60	126.84	1777.50	1735.76	22.29	OSF1.50	7810.00	7189.51				MinPt-O-SF	
	1874.97	127.63	1789.35	1747.34	22.30	OSF1.50	7920.00	7230.53				MinPt-O-SF	
Robin 9-9HZ IFR1+MS 0' to 18068' - PR (Def Survey)	1913.17	130.37	1825.72	1782.80	22.27	OSF1.50	8230.00	7266.00				MinPt-O-SF	
	7576.38	140.55	7482.15	7435.83	81.78	OSF1.50	15190.00	7266.00				MinPt-O-SF	
	10330.73	143.67	10234.42	10187.06	109.06	OSF1.50	18028.26	7266.00				TD	
	Pass												
	349.80	32.81	347.98	316.99	N/A	MAS = 10.00 (m)	0.00	0.00				Surface	
	349.73	32.81	347.91	316.92	N/A	MAS = 10.00 (m)	23.00	23.00				WRP	
	341.27	32.81	332.55	308.46	49.14	MAS = 10.00 (m)	760.00	757.31				MinPts	
	341.60	32.81	332.25	308.79	45.09	MAS = 10.00 (m)	820.00	816.25				MINPT-O-EQU	
	417.68	32.81	398.60	384.87	23.81	MAS = 10.00 (m)	1700.00	1666.77				MinPt-O-SF	
	572.69	34.99	548.82	537.69	25.66	OSF1.50	2360.00	2282.79				MinPt-O-SF	
	979.48	53.68	943.15	925.80	28.17	OSF1.50	3570.00	3395.33				MinPt-O-SF	
	1100.33	58.78	1060.61	1041.55	28.82	OSF1.50	3910.00	3707.95				MinPt-O-SF	
	1363.13	72.07	1314.54	1291.06	28.98	OSF1.50	4630.00	4369.96				MinPt-O-SF	
	1913.54	95.95	1849.04	1817.60	30.40	OSF1.50	6050.00	5675.58				MinPt-O-SF	
Robin 9-8HZ IFR1+MS 0' to 18257' - PR (Def Survey)	2146.30	106.33	2074.87	2039.96	30.72	OSF1.50	6640.00	6218.06				MinPt-O-SF	
	2260.77	113.06	2184.86	2147.71	30.40	OSF1.50	6940.00	6496.21				MinPt-O-SF	
	2308.55	115.14	2231.25	2193.41	30.48	OSF1.50	7100.00	6649.44				MinPt-O-SF	
	2334.35	116.38	2256.23	2217.97	30.49	OSF1.50	7200.00	6743.91				MinPt-O-SF	
	2347.92	119.75	2287.56	2228.17	29.79	OSF1.50	7260.00	6799.16				MinPt-O-SF	
	2365.85	121.06	2284.60	2244.78	29.69	OSF1.50	7370.00	6896.16				MinPt-O-SF	
	2482.42	126.03	2397.87	2356.40	29.91	OSF1.50	8360.00	7266.00				MinPt-O-SF	
	10468.23	151.27	10366.85	10316.96	104.90	OSF1.50	18028.26	7266.00				TD	
	Pass												
	12681.12	170.46	12567.15	12510.66	112.23	OSF1.50	0.00	0.00				MinPt-O-SF	
	12667.82	170.26	12553.98	12497.58	112.24	OSF1.50	23.00	23.00				MinPt-O-SF	
	11327.26	122.52	11245.25	11204.74	139.79	OSF1.50	4850.00	4572.24				MinPts	
	11327.26	122.51	11245.26	11204.75	139.80	OSF1.50	4860.00	4581.43				MinPt-CtCt	
	889.72	165.03	779.37	724.69	8.13	OSF1.50	18028.26	7266.00				MinPts	
Robin 9-10HZ IFR1+MS 0' to 17999' - PR (Def Survey)	Pass												
	12707.51	171.32	12592.97	12536.19	111.90	OSF1.50	0.00	0.00				MinPt-O-SF	
	12693.96	171.11	12579.56	12522.85	111.91	OSF1.50	23.00	23.00				MinPt-O-SF	
	11335.52	122.94	11253.23	11212.59	139.41	OSF1.50	4880.00	4599.82				MinPts	
	11335.52	122.93	11253.24	11212.59	139.42	OSF1.50	4890.00	4609.01				MinPt-CtCt	
	905.13	219.81	758.26	685.31	6.20	OSF1.50	18028.26	7266.00				MinPts	
Robin 9-10HZ IFR1+MS 0' to 17999' - PR (Def Survey)	Pass												
	12674.59	171.76	12559.75	12502.83	111.32	OSF1.50	0.00	0.00				MinPt-O-SF	
	12661.44	171.57	12546.74	12489.87	111.33	OSF1.50	23.00	23.00				MinPt-O-SF	
	11322.93	124.32	11239.72	11198.61	137.70	OSF1.50	4860.00	4581.43				MinPts	
	11322.92	124.31	11239.72	11198.61	137.71	OSF1.50	4870.00	4590.63				MinPt-CtCt	

Offset Trajectory	Separation			Allow Dev. (ft)	Sep. Fact.	Controlling Rule	Reference Trajectory		Risk Level			Alert	Status
	Cl-Ct (ft)	MAS (ft)	EOU (ft)				MD (ft)	TVD (ft)	Alert	Minor	Major		
	989.45	275.05	805.75	714.40	5.41	OSF1.50	18028.26	7266.00				MinPts	
Penrod 4-3 Blind 0' to 8004' - PA (Def Survey)													Pass
	2087.81	32.81	2085.99	2055.00	N/A	MAS = 10.00 (m)	0.00	0.00				Surface	
	2087.70	32.81	2085.87	2054.89	129773.35	MAS = 10.00 (m)	10.00	10.00				MinPt-O-SF	
	2087.63	32.81	2085.81	2054.83	239783.57	MAS = 10.00 (m)	23.00	23.00				WRP	
	1275.92	327.82	1056.83	948.09	5.86	OSF1.50	5640.00	5298.61				MinPt-CtCt	
	1281.98	346.20	1050.65	935.79	5.57	OSF1.50	5960.00	5592.83				MINPT-O-EOU	
	1289.61	355.31	1052.20	934.30	5.46	OSF1.50	6120.00	5739.94				MinPt-O-ADP	
	1370.29	399.16	1103.65	971.13	5.16	OSF1.50	6900.00	6458.25				MinPt-O-SF	
	11326.95	446.81	11028.54	10880.14	38.16	OSF1.50	18028.26	7266.00				TD	
Robin 9-3HZ IFR1+MS 0' to 18437' - PR (Def Survey)													Pass
	12492.37	179.77	12372.19	12312.60	104.80	OSF1.50	0.00	0.00				MinPt-O-SF	
	12478.82	179.55	12358.79	12299.27	104.82	OSF1.50	23.00	23.00				MinPt-O-SF	
	11283.47	134.08	11193.76	11149.39	127.15	OSF1.50	4330.00	4094.12				MinPt-O-ADP	
	11283.45	134.06	11193.75	11149.40	127.18	OSF1.50	4340.00	4103.31				MINPT-O-EOU	
	11283.43	133.99	11193.77	11149.44	127.24	OSF1.50	4360.00	4121.70				MinPt-CtCt	
	1802.08	506.38	1464.17	1295.70	5.35	OSF1.50	18028.26	7266.00				MinPts	
Young 01N-65W-28-8N MWD 0' to 11808' - PR (Def Survey)													Pass
	9505.38	144.77	9408.26	9360.61	99.72	OSF1.50	0.00	0.00				Surface	
	9487.90	144.97	9390.65	9342.93	99.40	OSF1.50	23.00	23.00				WRP	
	6522.87	164.49	6412.67	6358.38	60.05	OSF1.50	6650.00	6227.26				MinPt-CtCt	
	6522.94	164.72	6412.55	6358.21	59.97	OSF1.50	6680.00	6254.84				MINPT-O-EOU	
	6523.06	164.88	6412.60	6358.18	59.91	OSF1.50	6700.00	6273.23				MinPt-O-ADP	
	1954.82	370.59	1707.22	1584.23	7.94	OSF1.50	13560.00	7266.00				MinPt-CtCt	
	1955.25	372.04	1706.69	1583.21	7.91	OSF1.50	13600.00	7266.00				MinPts	
	1955.48	372.16	1706.84	1583.32	7.91	OSF1.50	13610.00	7266.00				MinPt-O-SF	
	1956.88	372.08	1708.29	1584.80	7.92	OSF1.50	13670.00	7266.00				MinPt-O-SF	
	1969.89	373.04	1720.66	1596.85	7.95	OSF1.50	14220.00	7266.00				MinPt-O-SF	
	1969.69	371.61	1721.42	1598.08	7.98	OSF1.50	14320.00	7266.00				MinPt-CtCt	
	1969.77	372.22	1721.09	1597.55	7.97	OSF1.50	14360.00	7266.00				MinPts	
	1969.60	371.46	1721.42	1598.14	7.98	OSF1.50	14420.00	7266.00				MINPT-O-EOU	
	1962.62	374.35	1712.52	1588.27	7.89	OSF1.50	14640.00	7266.00				MinPt-CtCt	
	1963.07	376.19	1711.74	1586.88	7.85	OSF1.50	14750.00	7266.00				MINPT-O-EOU	
	1963.66	377.07	1711.75	1586.59	7.84	OSF1.50	14840.00	7266.00				MinPts	
	1963.62	377.17	1711.65	1586.46	7.84	OSF1.50	14900.00	7266.00				MinPt-O-SF	
	1963.56	377.14	1711.59	1586.41	7.84	OSF1.50	14910.00	7266.00				MinPts	
	1959.93	376.37	1708.49	1583.57	7.84	OSF1.50	15030.00	7266.00				MinPts	
	1934.73	389.26	1674.69	1545.47	7.48	OSF1.50	15560.00	7266.00				MinPt-CtCt	
	1936.16	393.29	1673.43	1542.87	7.41	OSF1.50	15680.00	7266.00				MINPT-O-EOU	
	1937.82	395.24	1673.79	1542.59	7.38	OSF1.50	15740.00	7266.00				MinPts	
	1929.89	413.85	1653.46	1516.04	7.02	OSF1.50	16480.00	7266.00				MinPt-CtCt	
	1931.90	420.62	1650.95	1511.28	6.91	OSF1.50	16660.00	7266.00				MINPT-O-EOU	
	1932.56	429.54	1645.66	1503.02	6.77	OSF1.50	16950.00	7266.00				MinPt-CtCt	
	1930.39	438.64	1637.43	1491.75	6.62	OSF1.50	17230.00	7266.00				MinPts	
	1909.74	458.75	1603.37	1450.98	6.26	OSF1.50	17710.00	7266.00				MinPt-CtCt	
	1910.08	461.66	1601.77	1448.42	6.22	OSF1.50	17770.00	7266.00				MinPts	
	1907.00	469.25	1593.63	1437.74	6.11	OSF1.50	17950.00	7266.00				MinPt-CtCt	
	1908.24	473.61	1591.96	1434.63	6.06	OSF1.50	18028.26	7266.00				MinPts	
Robin 9-2HZ IFR1+MS 0' to 18623' - PR (Def Survey)													Pass
	12586.36	181.70	12464.90	12404.66	104.46	OSF1.50	0.00	0.00				MinPt-O-SF	
	12572.68	181.48	12451.36	12391.19	104.48	OSF1.50	23.00	23.00				MinPt-O-SF	
	11366.26	138.24	11273.77	11228.02	124.21	OSF1.50	4370.00	4130.90				MinPt-O-ADP	
	11366.24	138.21	11273.77	11228.03	124.23	OSF1.50	4380.00	4140.09				MINPT-O-EOU	
	11366.23	138.16	11273.79	11228.06	124.28	OSF1.50	4400.00	4158.48				MinPt-CtCt	
	2037.43	513.25	1694.94	1524.18	5.96	OSF1.50	18028.26	7266.00				MinPts	
Robin 9-1HZ IFR1+MS 0' to 18459' - PR (Def Survey)													Pass
	12467.22	182.61	12345.15	12284.61	102.96	OSF1.50	0.00	0.00				MinPt-O-SF	
	12453.75	182.39	12331.83	12271.36	102.97	OSF1.50	23.00	23.00				MinPt-O-SF	
	11334.33	143.27	11238.46	11191.09	119.48	OSF1.50	4080.00	3864.26				MinPt-O-ADP	
	11334.28	143.21	11238.46	11191.07	119.53	OSF1.50	4100.00	3862.64				MINPT-O-EOU	
	11334.26	143.15	11238.50	11191.11	119.58	OSF1.50	4120.00	3901.03				MinPt-CtCt	
	2356.32	526.04	2005.30	1830.29	6.73	OSF1.50	18028.26	7266.00				MinPts	
English Farms 8-19HZ IFR1+MS 0' to 20216' - PR (Def Survey)													Pass
	10557.38	223.94	10407.76	10333.44	71.02	OSF1.50	0.00	0.00				Surface	
	10541.46	223.68	10392.01	10317.78	71.00	OSF1.50	23.00	23.00				WRP	
	10325.05	219.32	10178.51	10105.74	70.93	OSF1.50	340.00	339.99				MinPt-O-SF	
	9041.44	154.70	8937.97	8886.73	88.22	OSF1.50	4570.00	4314.79				MinPt-O-ADP	
	9041.28	154.52	8937.94	8886.76	88.32	OSF1.50	4590.00	4333.18				MINPT-O-EOU	
	9041.07	153.97	8938.10	8887.11	88.64	OSF1.50	4650.00	4388.34				MinPt-CtCt	
	2600.41	508.19	2261.29	2092.23	7.69	OSF1.50	16370.00	7266.00				MinPt-CtCt	
	2600.64	508.86	2261.07	2091.78	7.68	OSF1.50	16400.00	7266.00				MINPT-O-EOU	
	2600.99	509.28	2261.14	2091.71	7.67	OSF1.50	16420.00	7266.00				MinPt-O-ADP	
	2613.81	516.98	2258.83	2096.83	7.60	OSF1.50	16800.00	7266.00				MinPts	
	2606.68	523.48	2257.36	2083.20	7.48	OSF1.50	17100.00	7266.00				MinPt-CtCt	
	2578.97	545.94	2214.69	2033.04	7.10	OSF1.50	18028.26	7266.00				MinPts	

...Confluence 33-01N-65W (Freedom 33 Pad)\Buford 33-6-2L\Original Hole\Buford 33-6-2L R0 mdv 27Jul22