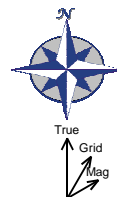
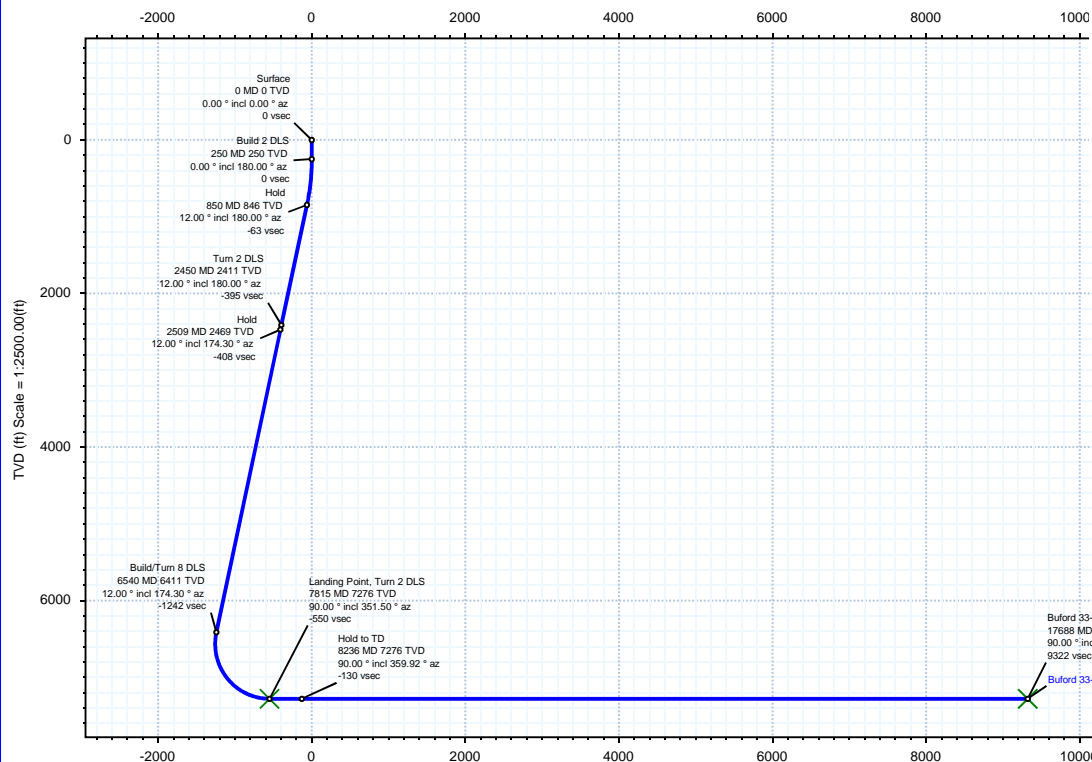


<b>Borehole:</b>	<b>Well:</b>	<b>Field:</b>	<b>Structure:</b>
Original Hole	Buford 33-10-2L	CO, Weld County (NAD 83 NZ) - 2019	Confluence 33-01N-65W (Freedom 33 Pad)

<b>Gravity &amp; Magnetic Parameters</b>	<b>Surface Location</b>	<b>Miscellaneous</b>
Model: HDGM 2022 Dip: 66.206° Date: 11-Jul-2022	NAD83 Colorado State Plane, Northern Zone, US Feet	Slot: Buford 33-10-2L TVD Ref: KB = 23ft(5101ft above MSL)
MagDec: 7.862° FS: 51573.473nT Gravity FS: 998.983mgn (9.80665 Based)	Lat: N 40 0 10.91 Northing: 1245019.6ftUS Grid Conv: 0.5315°	Plan: Buford 33-10-2L R0 mdv 27Jul22
	Lon: W 104 40 38.42 Easting: 3230457.61ftUS Scale Fact: 0.99996614	

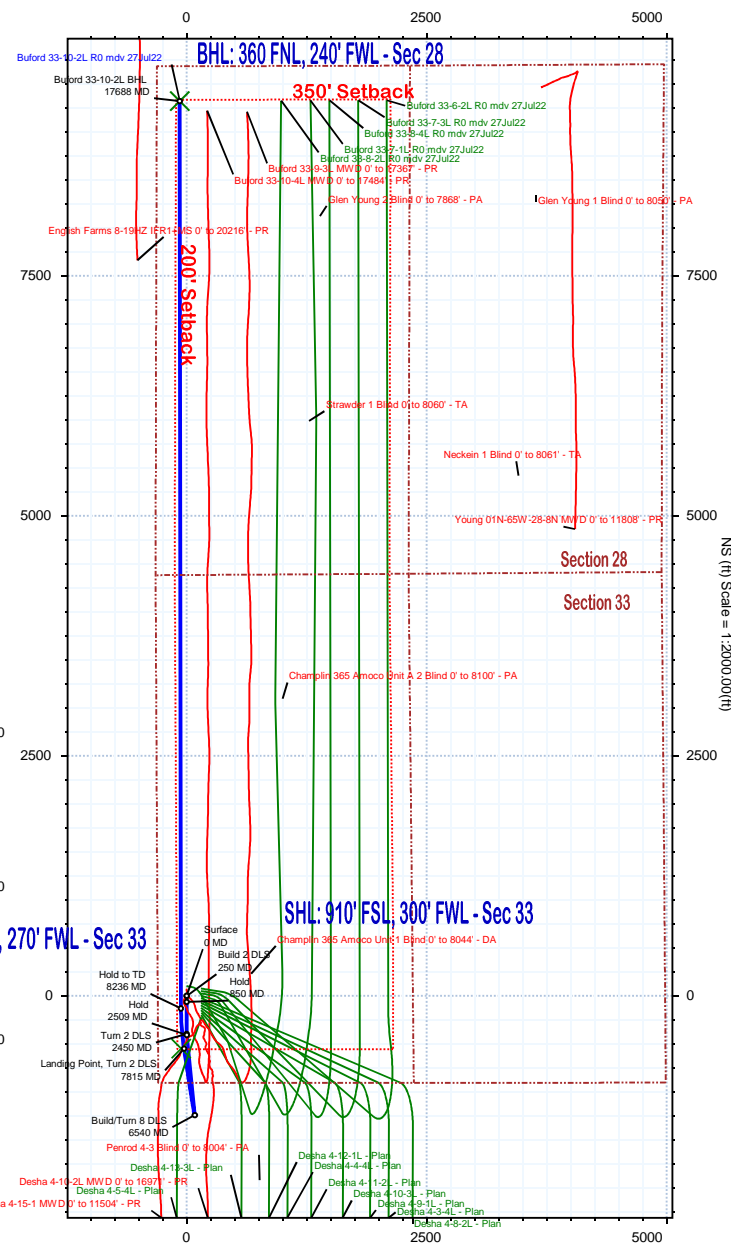
North: 1245019.59545369 Easting: 3230457.60709544	Surface Location	Latitude: N 40 0 10.91 Longitude: W 104 40 38.42 VSec Azimuth: 359.55
<b>Target Description</b>	<b>Grid Coord</b>	<b>Local Coord</b>
Target Name	Latitude	Longitude
Freedom 33 Pad Sec 33-28 - CL NS	N 40 0 11.66	W 104 40 36.52
Freedom 33 Pad Sec 33-28 - W2	N 40 0 11.66	W 104 40 36.52
350'NSx200'EW SB	N 40 0 10.91	W 104 40 38.42
Freedom 33 Pad Sec 33-28 - CL	N 40 0 10.91	W 104 40 38.42
Freedom 33 Pad Sec 33-28 - CL	N 40 1 43.03	W 104 40 39.36
Buford 33-10-2L BHL	N 40 0 5.47	W 104 40 39.18
Buford 33-10-2L LP	N 40 0 5.47	W 104 40 39.18

<b>Critical Point</b>	<b>MD</b>	<b>INCL</b>	<b>AZIM</b>	<b>TVD</b>	<b>VSEC</b>	<b>N(+)/S(-)</b>	<b>E(+)/W(-)</b>	<b>DLS</b>
Surface	0.00	0.00	0.00	0.00	0.00	0.00	0.00	0.00
Build 2 DLS	250.00	0.00	180.00	250.00	0.00	0.00	0.00	0.00
Hold	850.00	12.00	180.00	845.62	-62.60	-62.60	0.00	2.00
Turn 2 DLS	2450.00	12.00	180.00	2410.66	-395.25	-395.26	0.00	0.00
Hold	2509.26	12.00	174.30	2468.63	-407.55	-407.55	0.61	2.00
Build/Turn 8 DLS	6539.84	12.00	174.30	6411.08	-1242.24	-1241.63	83.90	0.00
Landing Point, Turn 2 DLS	7814.70	90.00	351.50	7276.00	-549.83	-550.07	-28.53	8.00
Hold to TD	8235.81	90.00	359.92	7276.00	-130.04	-130.52	-59.99	2.00
Buford 33-10-2L BHL	17688.46	90.00	359.92	7276.00	9322.40	9322.12	-72.81	0.00



True North  
Tot Corr (M->T 7.862°)  
Mag Dec (7.862°)  
Grid Conv (0.532°)

LP: 360° FSL, 270° FWL - Sec 33



Vertical Section (ft) Azim = 359.55° Scale = 1:2500.00(ft) Origin = 0N/-S, 0E/-W

## Buford 33-10-2L R0 mdv 27Jul22 Proposal Geodetic Report

(Def Plan)

**Report Date:** August 02, 2022 - 12:53 PM  
**Client:** Confluence DJ  
**Field:** CO, Weld County (NAD 83 NZ) - 2019  
**Structure / Slot:** Confluence 33-01N-65W (Freedom 33 Pad) / Buford 33-10-2L  
**Well:** Buford 33-10-2L  
**Borehole:** Original Hole  
**UWI / API#:** 05-123-45541  
**Survey Name:** Buford 33-10-2L R0 mdv 27Jul22  
**Survey Date:** July 11, 2022  
**Tort / AHD / DDI / ERD Ratio:** 123.596 ° / 11851.742 ft / 6.552 / 1.629  
**Coordinate Reference System:** NAD83 Colorado State Plane, Northern Zone, US Feet  
**Location Lat / Long:** N 40° 0' 10.90800", W 104° 40' 38.42400"  
**Location Grid N/E Y/X:** N 1245019.595 ftUS, E 3230457.607 ftUS  
**CRS Grid Convergence Angle:** 0.5315 °  
**Grid Scale Factor:** 0.99996614  
**Version / Patch:** 2.10.832.2

**Survey / DLS Computation:** Minimum Curvature / Lubinski  
**Vertical Section Azimuth:** 359.552 ° (True North)  
**Vertical Section Origin:** 0.000 ft, 0.000 ft  
**TVD Reference Datum:** KB = 23ft  
**TVD Reference Elevation:** 5101.000 ft above MSL  
**Seabed / Ground Elevation:** 5078.000 ft above MSL  
**Magnetic Declination:** 7.862 °  
**Total Gravity Field Strength:** 998.9829mgn (9.80665 Based)  
**Gravity Model:** GARM  
**Total Magnetic Field Strength:** 51573.473 nT  
**Magnetic Dip Angle:** 66.206 °  
**Declination Date:** July 11, 2022  
**Magnetic Declination Model:** HDGM 2022  
**North Reference:** True North  
**Grid Convergence Used:** 0.0000 °  
**Total Corr Mag North->True North:** 7.8619 °  
**Local Coord Referenced To:** Well Head

Comments	MD (ft)	Incl (°)	Azim True (°)	TVD (ft)	TVDSS (ft)	VSEC (ft)	NS (ft)	EW (ft)	DLS (°/100ft)	Northing (ftUS)	Easting (ftUS)	Latitude (°)	Longitude (°)
Surface	0.00	0.00	0.00	0.00	-5101.00	0.00	0.00	0.00	N/A	1245019.60	3230457.61	40.003030	-104.677340
Build 2 DLS	100.00	0.00	180.00	100.00	-5001.00	0.00	0.00	0.00	0.00	1245019.60	3230457.61	40.003030	-104.677340
	200.00	0.00	180.00	200.00	-4901.00	0.00	0.00	0.00	0.00	1245019.60	3230457.61	40.003030	-104.677340
	250.00	0.00	180.00	250.00	-4851.00	0.00	0.00	0.00	0.00	1245019.60	3230457.61	40.003030	-104.677340
	300.00	1.00	180.00	300.00	-4801.00	-0.44	0.00	0.00	2.00	1245019.16	3230457.61	40.003029	-104.677340
	400.00	3.00	180.00	399.93	-4701.07	-3.93	0.00	0.00	2.00	1245015.67	3230457.64	40.003019	-104.677340
	500.00	5.00	180.00	499.68	-4601.32	-10.90	0.00	0.00	2.00	1245008.69	3230457.71	40.003000	-104.677340
	600.00	7.00	180.00	599.13	-4501.87	-21.35	0.00	0.00	2.00	1244998.24	3230457.81	40.002971	-104.677340
	700.00	9.00	180.00	698.15	-4402.85	-35.27	0.00	0.00	2.00	1244984.33	3230457.93	40.002933	-104.677340
	800.00	11.00	180.00	796.63	-4304.37	-52.63	0.00	0.00	2.00	1244966.97	3230458.10	40.002886	-104.677340
	850.00	12.00	180.00	845.62	-4255.38	-62.60	0.00	0.00	2.00	1244957.00	3230458.19	40.002858	-104.677340
Hold	900.00	12.00	180.00	894.53	-4206.47	-73.00	0.00	0.00	0.00	1244946.60	3230458.28	40.002830	-104.677340
	1000.00	12.00	180.00	992.35	-4108.65	-93.79	0.00	0.00	0.00	1244925.81	3230458.48	40.002773	-104.677340
	1100.00	12.00	180.00	1090.16	-4010.84	-114.58	0.00	0.00	0.00	1244905.02	3230458.67	40.002715	-104.677340
	1200.00	12.00	180.00	1187.97	-3913.03	-135.37	0.00	0.00	0.00	1244884.23	3230458.86	40.002658	-104.677340
	1300.00	12.00	180.00	1285.79	-3815.21	-156.16	0.00	0.00	0.00	1244863.45	3230459.06	40.002601	-104.677340
	1400.00	12.00	180.00	1383.60	-3717.40	-176.95	0.00	0.00	0.00	1244842.66	3230459.25	40.002544	-104.677340
	1500.00	12.00	180.00	1481.42	-3619.58	-197.74	0.00	0.00	0.00	1244821.87	3230459.44	40.002487	-104.677340
	1600.00	12.00	180.00	1579.23	-3521.77	-218.53	0.00	0.00	0.00	1244801.08	3230459.63	40.002430	-104.677340
	1700.00	12.00	180.00	1677.05	-3423.95	-239.33	0.00	0.00	0.00	1244780.29	3230459.83	40.002373	-104.677340
	1800.00	12.00	180.00	1774.86	-3326.14	-260.11	0.00	0.00	0.00	1244759.50	3230460.02	40.002316	-104.677340
Turn 2 DLS	1900.00	12.00	180.00	1872.68	-3228.32	-280.90	0.00	0.00	0.00	1244738.71	3230460.21	40.002259	-104.677340
	2000.00	12.00	180.00	1970.49	-3130.51	-301.69	0.00	0.00	0.00	1244717.92	3230460.41	40.002202	-104.677340
	2100.00	12.00	180.00	2068.31	-3032.69	-322.48	0.00	0.00	0.00	1244697.13	3230460.60	40.002145	-104.677340
	2200.00	12.00	180.00	2166.12	-2934.88	-343.27	0.00	0.00	0.00	1244676.34	3230460.79	40.002088	-104.677340
	2300.00	12.00	180.00	2263.94	-2837.06	-364.06	0.00	0.00	0.00	1244655.55	3230460.98	40.002031	-104.677340
	2400.00	12.00	180.00	2361.75	-2739.25	-384.85	0.00	0.00	0.00	1244634.76	3230461.18	40.001974	-104.677340
	2450.00	12.00	180.00	2410.66	-2690.34	-395.25	0.00	0.00	0.00	1244624.37	3230461.27	40.001945	-104.677340
	2500.00	12.00	175.19	2459.57	-2641.43	-405.63	0.44	2.00	1244613.99	3230461.81	40.001916	-104.677338	
	2509.26	12.00	174.30	2468.63	-2632.37	-407.55	0.61	2.00	1244612.08	3230462.00	40.001911	-104.677338	
	2600.00	12.00	174.30	2557.38	-2543.62	-426.34	2.49	0.00	1244593.32	3230464.05	40.001860	-104.677331	
Hold	2700.00	12.00	174.30	2655.20	-2445.80	-447.05	4.55	0.00	1244572.65	3230466.31	40.001803	-104.677324	
	2800.00	12.00	174.30	2753.01	-2347.99	-467.76	6.62	0.00	1244551.98	3230468.57	40.001746	-104.677316	
	2900.00	12.00	174.30	2850.82	-2250.18	-488.46	8.69	0.00	1244531.30	3230470.82	40.001689	-104.677309	
	3000.00	12.00	174.30	2948.64	-2152.36	-509.17	10.75	0.00	1244510.63	3230473.08	40.001632	-104.677302	
	3100.00	12.00	174.30	3046.45	-2054.55	-529.88	12.82	0.00	1244489.96	3230475.34	40.001576	-104.677294	
	3200.00	12.00	174.30	3144.26	-1956.74	-550.59	14.89	0.00	1244469.28	3230477.60	40.001519	-104.677287	
	3300.00	12.00	174.30	3242.08	-1858.92	-571.30	16.95	0.00	1244448.61	3230479.86	40.001462	-104.677279	
	3400.00	12.00	174.30	3339.89	-1761.11	-592.01	19.02	0.00	1244427.94	3230482.11	40.001405	-104.677272	
	3500.00	12.00	174.30	3437.70	-1663.30	-612.72	21.08	0.00	1244407.27	3230484.37	40.001348	-104.677265	
	3600.00	12.00	174.30	3535.52	-1565.48	-633.43	23.15	0.00	1244386.59	3230486.63	40.001292	-104.677257	
Turn 2 DLS	3700.00	12.00	174.30	3633.33	-1467.67	-654.14	25.22	0.00	1244365.92	3230488.89	40.001235	-104.677250	
	3800.00	12.00	174.30	3731.15	-1369.85	-674.85	27.28	0.00	1244345.25	3230491.15	40.001178	-104.677243	
	3900.00	12.00	174.30	3828.96	-1272.04	-695.56	29.35	0.00	1244324.57	3230493.41	40.001121	-104.677235	
	4000.00	12.00	174.30	3926.77	-1174.23	-716.27	31.42	0.00	1244303.90	3230495.66	40.001064	-104.677228	
	4100.00	12.00	174.30	4024.59	-1076.41	-736.97	33.48	0.00	1244283.23	3230497.92	40.001008	-104.677220	
	4200.00	12.00	174.30	4122.40	-978.60	-757.68	35.55	0.00	1244262.56	3230500.18	40.000951	-104.677213	
	4300.00	12.00	174.30	4220.21	-880.79	-778.39	37.62	0.00	1244241.88	3230502.44	40.000894	-104.677206	
	4400.00	12.00	174.30	4318.03	-782.97	-799.10	39.68	0.00	1244221.21	3230504.70	40.000837	-104.677198	
	4500.00	12.00	174.30	4415.84	-685.16	-819.81	41.75	0.00	1244200.54	3230506.95	40.000780	-104.677191	
	4600.00	12.00	174.30	4513.65	-587.35	-840.52	43.81	0.00	1244179.86	3230509.21	40.000724	-104.677184	
Turn 2 DLS	4700.00	12.00	174.30	4611.47	-489.53	-861.23	45.88	0.00	1244159.19	3230511.47	40.000667	-104.677176	
	4800.00	12.00	174.30	4709.28	-391.72	-881.94	47.95	0.00	1244138.52	3230513.73	40.000610	-104.677169	
	4900.00	12.00	174.30	4807.10	-293.90	-902.65	50.01	0.00	1244117.85	3230515.99	40.000553	-104.677161	
	5000.00	12.00	174.30	4904.91	-196.09	-923.36	52.08	0.00	1244097.17	3230518.25	40.000496	-104.677154	
	5100.00	12.00	174.30	5002.72	-98.28	-944.07	54.15	0.00	1244076.50	3230520.50	40.000440	-104.677147	
	5200.00	12.00	174.30	5100.54	-0.46	-964.78	56.21	0.00	1244055.83	3230522.76	40.000383	-104.677139	
	5300.00	12.00	174.30	5198.35	97.35	-985.48	58.28	0.00	1244035.15	3230525.02	40.000326	-104.677132	
	5400.00	12.00	174.30	5296.16	195.16	-1006.19	60.35	0.00	1244014.48	3230527.28	40.000269	-104.677125	
	5500.00	12.00	174.30	5393.98	292.98	-1026.90	62.41	0.00	1243993.81	3230529.54	40.000212	-104.677117	
	5600.00	12.00	174.30	5491.79	390.79	-1047.61	64.48	0.00	1243973.14	3230531.79	40.000156	-104.677110	
Build/Turn 8 DLS	5700.00	12.00	174.30	5589.60	488.60	-1068.32	66.54	0.00	1243952.46	3230534.05	40.000099	-104.677102	
	5800.00	12.00	174.30	5687.42	586.42	-1089.03	68.61	0.00	1243931.79	3230536.31	40.000042	-104.677095	
	5900.00	12.00	174.30	5785.23	684.23	-1109.74	70.68	0.00	1243911.12	3230538.57	39.999985	-104.677088	
	6000.00	12.00	174.30	5883.05	782.05	-1130.45	72.74	0.00	1243890.44	3230540.83	39.999928	-104.677080	
	6100.00	12.00	174.30	5980.86	879.86	-1151.16	74.81	0.00	1243869.77	3230543.09	39.999871	-104.677073	
	6200.00	12.00	174.30	6078.67	977.67	-1171.87	76.88	0.00	1243849.10	3230545.34	39.999815	-104.677066	
	6300.00	12.00	174.30	6176.49	1075.49	-1192.58	78.94	0.00	1243828.43	3230547.60	39.999758	-104.677058	
	6400.00	12.00	174.30	6274.30	1173.30	-1213.29	81.01	0.00	1243807.75	3230549.86	39.999701	-104.677051	
	6500.00	12.00	174.30	6372.11	1271.11	-1233.99	83.08	0.00	1243787.08	3230552.12	39.999644	-104.677043	
	Build/Turn 8 DLS	6539.84	12.00	174.30	6411.08	1310.08	-1242.24	83.90	0.00	1243778.84	3230553.02	39.999622	-104.677041
6600.00		7.20	176.21	6470.38	1369.38	-1252.24	84.77	8.00	1243768.86	3230553.98	39.999594	-104.677037	
6700.00		1.02	315.69	6570.14	1409.14	-1257.87	85.50	8.00	1243763.23	3230553.83	39.999579	-104.677038	
6800.00		8.84	347.68	6669.70	1568.70	-1249.09	82.346	8.00	1243771.37	3230551.49	39.999601	-104.677046	
6900.00		16.66	349.53	6767.12	1668.12	-1227.88	77.02	8.00	1243737.31	3230550.01	39.999661	-104.677062	
7000.00		24.83	350.21	6860.51	1759.51	-1192.84</							

Comments	MD (ft)	Incl (°)	Azim True (°)	TVD (ft)	TVDSS (ft)	VSEC (ft)	NS (ft)	EW (ft)	DLS (°/100ft)	Northing (ftUS)	Easting (ftUS)	Latitude (°)	Longitude (°)
Landing Point, Turn 2 DLS	7814.70	90.00	351.50	7276.00	2175.00	-549.83	-550.07	-28.53	8.00	1244469.30	3230434.18	40.001520	-104.677442
Hold to TD	7900.00	90.00	353.21	7276.00	2175.00	-465.21	-465.53	-39.88	2.00	1244553.73	3230422.05	40.001752	-104.677482
	8000.00	90.00	355.21	7276.00	2175.00	-365.65	-366.05	-49.98	2.00	1244653.11	3230411.03	40.002025	-104.677518
	8100.00	90.00	357.21	7276.00	2175.00	-265.82	-266.27	-56.59	2.00	1244752.82	3230403.49	40.002299	-104.677542
	8200.00	90.00	359.21	7276.00	2175.00	-165.86	-166.33	-59.72	2.00	1244852.73	3230399.43	40.002573	-104.677553
	8235.81	90.00	359.92	7276.00	2175.00	-130.04	-130.52	-59.99	2.00	1244888.53	3230398.83	40.002672	-104.677554
	8300.00	90.00	359.92	7276.00	2175.00	-65.86	-66.33	-60.08	0.00	1244952.71	3230398.15	40.002848	-104.677554
	8400.00	90.00	359.92	7276.00	2175.00	34.14	33.67	-60.22	0.00	1245052.71	3230397.08	40.003122	-104.677555
	8500.00	90.00	359.92	7276.00	2175.00	134.14	133.67	-60.35	0.00	1245152.70	3230396.02	40.003397	-104.677555
	8600.00	90.00	359.92	7276.00	2175.00	234.14	233.67	-60.49	0.00	1245252.69	3230394.96	40.003671	-104.677556
	8700.00	90.00	359.92	7276.00	2175.00	334.13	333.67	-60.62	0.00	1245352.68	3230393.89	40.003946	-104.677556
	8800.00	90.00	359.92	7276.00	2175.00	434.13	433.67	-60.76	0.00	1245452.67	3230392.83	40.004220	-104.677557
	8900.00	90.00	359.92	7276.00	2175.00	534.13	533.67	-60.90	0.00	1245552.66	3230391.77	40.004495	-104.677557
	9000.00	90.00	359.92	7276.00	2175.00	634.13	633.67	-61.03	0.00	1245652.65	3230390.70	40.004769	-104.677558
	9100.00	90.00	359.92	7276.00	2175.00	734.13	733.67	-61.17	0.00	1245752.64	3230389.64	40.005044	-104.677558
	9200.00	90.00	359.92	7276.00	2175.00	834.12	833.67	-61.30	0.00	1245852.63	3230388.58	40.005318	-104.677559
	9300.00	90.00	359.92	7276.00	2175.00	934.12	933.67	-61.44	0.00	1245952.62	3230387.51	40.005593	-104.677559
	9400.00	90.00	359.92	7276.00	2175.00	1034.12	1033.67	-61.57	0.00	1246052.61	3230386.45	40.005868	-104.677560
	9500.00	90.00	359.92	7276.00	2175.00	1134.12	1133.67	-61.71	0.00	1246152.60	3230385.39	40.006142	-104.677560
	9600.00	90.00	359.92	7276.00	2175.00	1234.12	1233.67	-61.84	0.00	1246252.59	3230384.32	40.006417	-104.677561
	9700.00	90.00	359.92	7276.00	2175.00	1334.11	1333.67	-61.98	0.00	1246352.58	3230383.26	40.006691	-104.677561
	9800.00	90.00	359.92	7276.00	2175.00	1434.11	1433.67	-62.12	0.00	1246452.58	3230382.20	40.006966	-104.677562
	9900.00	90.00	359.92	7276.00	2175.00	1534.11	1533.67	-62.25	0.00	1246552.57	3230381.13	40.007240	-104.677562
	10000.00	90.00	359.92	7276.00	2175.00	1634.11	1633.67	-62.39	0.00	1246652.56	3230380.07	40.007515	-104.677563
	10100.00	90.00	359.92	7276.00	2175.00	1734.10	1733.67	-62.52	0.00	1246752.55	3230379.01	40.007789	-104.677563
	10200.00	90.00	359.92	7276.00	2175.00	1834.10	1833.67	-62.66	0.00	1246852.54	3230377.94	40.008064	-104.677564
	10300.00	90.00	359.92	7276.00	2175.00	1934.10	1933.67	-62.79	0.00	1246952.53	3230376.88	40.008338	-104.677564
	10400.00	90.00	359.92	7276.00	2175.00	2034.10	2033.67	-62.93	0.00	1247052.52	3230375.82	40.008613	-104.677565
	10500.00	90.00	359.92	7276.00	2175.00	2134.10	2133.67	-63.06	0.00	1247152.51	3230374.75	40.008887	-104.677565
	10600.00	90.00	359.92	7276.00	2175.00	2234.09	2233.67	-63.20	0.00	1247252.50	3230373.69	40.009162	-104.677566
	10700.00	90.00	359.92	7276.00	2175.00	2334.09	2333.67	-63.34	0.00	1247352.49	3230372.63	40.009436	-104.677566
	10800.00	90.00	359.92	7276.00	2175.00	2434.09	2433.67	-63.47	0.00	1247452.48	3230371.56	40.009711	-104.677567
	10900.00	90.00	359.92	7276.00	2175.00	2534.09	2533.67	-63.61	0.00	1247552.47	3230370.50	40.009985	-104.677567
	11000.00	90.00	359.92	7276.00	2175.00	2634.09	2633.67	-63.74	0.00	1247652.46	3230369.44	40.010260	-104.677568
	11100.00	90.00	359.92	7276.00	2175.00	2734.08	2733.67	-63.88	0.00	1247752.46	3230368.37	40.010534	-104.677568
	11200.00	90.00	359.92	7276.00	2175.00	2834.08	2833.67	-64.01	0.00	1247852.45	3230367.31	40.010809	-104.677569
	11300.00	90.00	359.92	7276.00	2175.00	2934.08	2933.67	-64.15	0.00	1247952.44	3230366.25	40.011083	-104.677569
	11400.00	90.00	359.92	7276.00	2175.00	3034.08	3033.67	-64.29	0.00	1248052.43	3230365.18	40.011358	-104.677569
	11500.00	90.00	359.92	7276.00	2175.00	3134.08	3133.67	-64.42	0.00	1248152.42	3230364.12	40.011632	-104.677570
	11600.00	90.00	359.92	7276.00	2175.00	3234.07	3233.67	-64.56	0.00	1248252.41	3230363.06	40.011907	-104.677570
	11700.00	90.00	359.92	7276.00	2175.00	3334.07	3333.67	-64.69	0.00	1248352.40	3230361.99	40.012181	-104.677571
	11800.00	90.00	359.92	7276.00	2175.00	3434.07	3433.67	-64.83	0.00	1248452.39	3230360.93	40.012456	-104.677571
	11900.00	90.00	359.92	7276.00	2175.00	3534.07	3533.67	-64.96	0.00	1248552.38	3230359.87	40.012730	-104.677572
	12000.00	90.00	359.92	7276.00	2175.00	3634.07	3633.67	-65.10	0.00	1248652.37	3230358.80	40.013005	-104.677572
	12100.00	90.00	359.92	7276.00	2175.00	3734.06	3733.67	-65.23	0.00	1248752.36	3230357.74	40.013279	-104.677573
	12200.00	90.00	359.92	7276.00	2175.00	3834.06	3833.67	-65.37	0.00	1248852.35	3230356.68	40.013554	-104.677573
	12300.00	90.00	359.92	7276.00	2175.00	3934.06	3933.67	-65.51	0.00	1248952.34	3230355.61	40.013828	-104.677574
	12400.00	90.00	359.92	7276.00	2175.00	4034.06	4033.67	-65.64	0.00	1249052.34	3230354.55	40.014103	-104.677574
	12500.00	90.00	359.92	7276.00	2175.00	4134.05	4133.67	-65.78	0.00	1249152.33	3230353.49	40.014377	-104.677575
	12600.00	90.00	359.92	7276.00	2175.00	4234.05	4233.67	-65.91	0.00	1249252.32	3230352.43	40.014652	-104.677575
	12700.00	90.00	359.92	7276.00	2175.00	4334.05	4333.67	-66.05	0.00	1249352.31	3230351.36	40.014926	-104.677576
	12800.00	90.00	359.92	7276.00	2175.00	4434.05	4433.67	-66.18	0.00	1249452.30	3230350.30	40.015201	-104.677576
	12900.00	90.00	359.92	7276.00	2175.00	4534.05	4533.67	-66.32	0.00	1249552.29	3230349.24	40.015475	-104.677577
	13000.00	90.00	359.92	7276.00	2175.00	4634.04	4633.67	-66.45	0.00	1249652.28	3230348.17	40.015750	-104.677577
	13100.00	90.00	359.92	7276.00	2175.00	4734.04	4733.67	-66.59	0.00	1249752.27	3230347.11	40.016024	-104.677578
	13200.00	90.00	359.92	7276.00	2175.00	4834.04	4833.67	-66.73	0.00	1249852.26	3230346.05	40.016299	-104.677578
	13300.00	90.00	359.92	7276.00	2175.00	4934.04	4933.67	-66.86	0.00	1249952.25	3230344.98	40.016573	-104.677579
	13400.00	90.00	359.92	7276.00	2175.00	5034.04	5033.67	-67.00	0.00	1250052.24	3230343.92	40.016848	-104.677579
	13500.00	90.00	359.92	7276.00	2175.00	5134.03	5133.67	-67.13	0.00	1250152.23	3230342.86	40.017122	-104.677580
	13600.00	90.00	359.92	7276.00	2175.00	5234.03	5233.67	-67.27	0.00	1250252.22	3230341.79	40.017397	-104.677580
	13700.00	90.00	359.92	7276.00	2175.00	5334.03	5333.67	-67.40	0.00	1250352.22	3230340.73	40.017671	-104.677581
	13800.00	90.00	359.92	7276.00	2175.00	5434.03	5433.67	-67.54	0.00	1250452.21	3230339.67	40.017946	-104.677581
	13900.00	90.00	359.92	7276.00	2175.00	5534.03	5533.67	-67.					

Comments	MD (ft)	Incl (°)	Azim True (°)	TVD (ft)	TVDSS (ft)	VSEC (ft)	NS (ft)	EW (ft)	DLS (°/100ft)	Northing (ftUS)	Easting (ftUS)	Latitude (°)	Longitude (°)
		1	0.000	23.000	1/100.000	13.500	9.625		B001Mb_MWD+HRGM-Depth Only		Original Hole / Buford 33-10-2L R0 mdv 27Jul22		
		1	23.000	1700.000	1/100.000	13.500	9.625		B001Mb_MWD+HRGM		Original Hole / Buford 33-10-2L R0 mdv 27Jul22		
		1	1700.000	17688.455	1/100.000	8.500	5.500		B001Mb_MWD+HRGM		Original Hole / Buford 33-10-2L R0 mdv 27Jul22		

## Buford 33-10-2L R0 mdv 27Jul22 Anti-Collision Summary Report

**Analysis Date-24hr Time:** August 02, 2022 - 12:54

**Client:** Confluence DJ

**Field:** CO, Weld County (NAD 83 NZ) - 2019

**Structure:** Confluence 33-01N-65W (Freedom 33 Pad)

**Slot:** Buford 33-10-2L

**Well:** Buford 33-10-2L

**Borehole:** Original Hole

**Scan MD Range:** 0.00ft ~ 17688.46ft

**Analysis Method:** 3D Least Distance

**Reference Trajectory:** Buford 33-10-2L R0 mdv 27Jul22 (Def Plan)

**Depth Interval:** Every 10.00 Measured Depth (ft)

**Rule Set:** NAL Procedure: D&M AntiCollision Standard S002

**Min Pts:** All local minima indicated.

**Version / Patch:** 2.10.832.2

**Database \ Project:** us1455vsm3175\drilling-CO, Weld County 2.10\_RESTORE

**Trajectory Error Model:** ISCWSA3 3-D 95.000% Confidence 2.7955 sigma, for subject well. For offset wells, error model version is specified with each well respectively.

### Offset Trajectories Summary

**Offset Selection Criteria**

Wellhead distance scan: Not performed!

Selection filters: Definitive Surveys - Definitive Plans - Definitive surveys exclude definitive plans

- All Non-Def Surveys when no Def-Survey is set in a borehole - All Non-Def Plans when no Def-Plan is set in a borehole

Offset Trajectory	Separation			Allow Dev. (ft)	Sep. Fact.	Controlling Rule	Reference Trajectory		Risk Level			Alert	Status
	Ct-Ct (ft)	MAS (ft)	EOU (ft)				MD (ft)	TVD (ft)	Alert	Minor	Major		

Results highlighted: Sep-Factor separation &lt;= 1.50 ft

 Buford 33-10-4L MWD 0' to 17484' - PR (Def Survey) Fail Major

25.52	20.76	23.71	4.76	N/A	MAS = 6.33 (m)	0.00	0.00	CtCt<=15m<15.00				Enter Alert	
25.50	20.76	23.65	4.74	N/A	MAS = 6.33 (m)	23.00	23.00					MinPts	
25.97	20.76	22.53	5.21	14.79	MAS = 6.33 (m)	260.00	260.00					MINPT-O-EQU	
37.39	20.76	31.54	16.63	8.81	MAS = 6.33 (m)	510.00	509.64					MinPt-O-SF	
48.77	20.76	41.82	28.01	9.15	MAS = 6.33 (m)	620.00	618.97	CtCt<=15m>15.00				Exit Alert	
302.38	31.48	280.86	270.90	15.10	OSF1.50	2300.00	2263.94					MinPt-O-ADP	
316.38	36.57	291.47	279.81	13.50	OSF1.50	2750.00	2704.10					MinPt-O-ADP	
347.51	53.14	311.55	294.37	10.07	OSF1.50	3950.00	3877.87					MINPT-O-EQU	
349.20	55.09	311.94	294.11	9.75	OSF1.50	4080.00	4005.02					MinPt-O-ADP	
368.67	69.88	321.55	298.79	8.06	OSF1.50	4980.00	4885.35					MINPT-O-EQU	
369.33	70.68	321.67	298.64	7.98	OSF1.50	5030.00	4934.25					MinPt-O-ADP	
375.97	78.97	322.76	297.00	7.26	OSF1.50	5590.00	5482.01					MINPT-O-EQU	
376.30	79.41	322.82	296.89	7.22	OSF1.50	5620.00	5511.35					MinPt-O-ADP	
333.71	102.20	265.04	231.51	4.95	OSF1.50	6950.00	6814.44	OSF<5.00				Enter Alert	
197.31	116.22	119.30	81.10	2.56	OSF1.50	7420.00	7169.97					MinPt-CtCt	
197.42	116.57	119.17	80.84	2.55	OSF1.50	7430.00	7175.15					MINPT-O-EQU	
197.70	116.90	119.24	80.81	2.55	OSF1.50	7440.00	7180.20					MinPt-O-ADP	
198.17	117.19	119.51	80.99	2.55	OSF1.50	7450.00	7185.14					MinPt-O-SF	
326.14	100.42	258.66	225.72	4.93	OSF1.50	7860.00	7276.00	OSF>5.00				Exit Alert	
370.89	108.72	297.87	262.17	5.17	OSF1.50	8650.00	7276.00					MinPt-CtCt	
371.00	112.68	295.35	258.32	4.99	OSF1.50	8790.00	7276.00	OSF<5.00				Enter Alert	
353.36	149.02	253.48	204.34	3.58	OSF1.50	9780.00	7276.00					MinPt-CtCt	
365.45	195.54	234.55	169.90	2.81	OSF1.50	10670.00	7276.00					MINPT-O-EQU	
361.41	233.74	205.05	127.67	2.32	OSF1.50	11480.00	7276.00					MinPt-CtCt	
366.01	280.64	178.38	85.36	1.96	OSF1.50	12340.00	7276.00					MinPt-CtCt	
363.41	296.66	165.10	66.75	1.84	OSF1.50	12670.00	7276.00					MinPt-CtCt	
367.48	307.48	161.96	60.00	1.79	OSF1.50	12860.00	7276.00					MINPT-O-EQU	
376.39	346.35	144.96	30.05	1.63	OSF1.50	13430.00	7276.00					MinPt-CtCt	
368.48	368.50	122.28	-0.02	1.50	OSF1.50	13840.00	7276.00					Enter Minor	
354.88	397.46	89.35	-42.60	1.34	OSF1.50	14480.00	7276.00					MinPt-CtCt	
362.48	441.24	67.80	-78.75	1.23	OSF1.50	15250.00	7276.00					MinPt-CtCt	
368.01	530.39	13.88	-162.38	1.04	OSF1.50	16740.00	7276.00					MinPt-CtCt	
372.08	557.81	-0.32	-185.73	1.00	OSF1.50	17220.00	7276.00					OSF<1.00	Enter Major
368.87	574.59	-14.73	-205.72	0.96	OSF1.50	17590.00	7276.00					MinPts	
376.10	563.77	-0.28	-187.67	1.00	OSF1.50	17660.00	7276.00					OSF>1.00	Exit Major
382.68	554.42	12.53	-171.74	1.03	OSF1.50	17688.46	7276.00					TD	

 English Farms 8-19HZ  
IFR1-MS 0' to 20216' - PR (Def Survey)

Fail Minor

10604.25	222.75	10455.42	10381.50	71.72	OSF1.50	0.00	0.00					Surface	
10588.40	222.49	10439.75	10365.91	71.70	OSF1.50	23.00	23.00					WRP	
10426.67	219.23	10280.19	10207.44	71.68	OSF1.50	260.00	260.00					MinPt-O-SF	
8917.43	119.28	8837.58	8798.15	113.06	OSF1.50	5440.00	5335.29					MinPt-O-ADP	
8916.86	118.60	8837.47	8798.26	113.71	OSF1.50	5490.00	5384.20					MINPT-O-EQU	
8916.53	117.56	8837.83	8798.98	114.72	OSF1.50	5570.00	5462.45					MinPt-CtCt	
862.83	263.68	686.71	599.14	4.92	OSF1.50	15290.00	7276.00	OSF<5.00				Enter Alert	
472.94	507.44	106.21	-62.61	1.31	OSF1.50	15870.00	7276.00					Enter Minor	
444.84	507.44	106.15	-62.70	1.31	OSF1.50	16030.00	7276.00	OSF<1.50				MinPt-CtCt	
444.95	507.72	106.15	-62.70	1.31	OSF1.50	16040.00	7276.00					MinPts	
453.40	521.22	105.59	-67.82	1.30	OSF1.50	16760.00	7276.00					MinPt-CtCt	
427.24	542.65	65.14	-115.41	1.18	OSF1.50	17688.46	7276.00					MinPts	

Desha 4-5-4L - Plan (Def Plan)

Warning Alert

268.83	32.81	267.85	236.03	N/A	MAS = 10.00 (m)	0.00	0.00					Surface	
268.82	32.81	267.84	236.01	N/A	MAS = 10.00 (m)	23.00	23.00					WRP	
101.30	32.81	80.06	68.50	4.95	MAS = 10.00 (m)	2260.00	2224.81	OSF<5.00				Enter Alert	
57.37	38.30	31.44	18.98	2.26	OSF1.50	2990.00	2938.86					MinPts	
156.01	47.66	123.91	108.35	4.98	OSF1.50	4200.00	4122.40	OSF>5.00				Exit Alert	
297.65	91.54	236.29	206.11	4.91	OSF1.50	7090.00	6939.60	OSF<5.00				Enter Alert	
115.42	103.14	46.33	12.28	1.68	OSF1.50	7430.00	7175.15					MinPts	
288.80	89.26	228.97	199.54	4.89	OSF1.50	7700.00	7266.84	OSF>5.00				Exit Alert	
10192.54	102.04	10124.18	10090.50	151.28	OSF1.50	17688.46	7276.00					TD	

Buford 33-9-3L MWD 0' to 17367' - PR (Def Survey)

Warning Alert

76.56	32.81	74.75	43.75	N/A	MAS = 10.00 (m)	0.00	0.00					Surface	
76.55	32.81	74.74	43.74	N/A	MAS = 10.00 (m)	23.00	23.00					MinPts	
76.78	32.81	73.11	43.97	40.45	MAS = 10.00 (m)	270.00	270.00					MINPT-O-EQU	
127.69	32.81	118.88	94.88	17.99	MAS = 10.00 (m)	790.00	786.81					MinPt-O-SF	
319.28	32.81	299.07	286.47	17.07	MAS = 10.00 (m)	2080.00	2048.74					MinPts	
319.31	32.81	299.04	286.50	17.01	MAS = 10.00 (m)	2090.00	2058.53					MINPT-O-EQU	
332.36	38.34	306.26	294.02	13.51	OSF1.50	2770.00	2723.67					MinPt-CtCt	
332.55	38.92	306.07	293.63	13.30	OSF1.50	2810.00	2762.79					MINPT-O-EQU	
332.80	39.22	306.12	293.58	13.21	OSF1.50	2830.00	2782.35					MinPt-O-ADP	

...Confluence 33-01N-65W (Freedom 33 Pad)\Buford 33-10-2L\Original Hole\Buford 33-10-2L R0 mdv 27Jul22

Offset Trajectory	Separation			Allow Dev. (ft)	Sep. Fact.	Controlling Rule	Reference Trajectory		Risk Level			Alert	Status
	Cl-Cl (ft)	MAS (ft)	EOU (ft)				MD (ft)	TVD (ft)	Alert	Minor	Major		
441.38	70.82	393.63	370.55	9.53		OSF1.50	4530.00	4445.18				MinPt-O-SF	
496.40	83.27	440.35	413.13	9.09		OSF1.50	5100.00	5002.72				MinPt-O-ADP	
514.12	93.96	450.94	420.16	8.32		OSF1.50	5650.00	5540.70				MinPt-O-SF	
599.08	118.27	519.69	480.80	7.68		OSF1.50	6900.00	6767.12				MinPt-CiCi	
598.11	119.58	517.86	478.53	7.58		OSF1.50	7100.00	6948.04				MinPt-O-SF	
598.10	119.57	517.85	478.53	7.58		OSF1.50	7110.00	6956.41				MinPts	
691.27	141.83	596.18	549.43	7.38		OSF1.50	9040.00	7276.00				MinPt-CiCi	
693.84	147.45	595.01	546.40	7.12		OSF1.50	9190.00	7276.00				MINPT-O-EOU	
695.41	149.29	595.34	546.12	7.05		OSF1.50	9240.00	7276.00				MinPt-O-ADP	
701.12	160.40	593.66	540.72	6.61		OSF1.50	9470.00	7276.00				MinPt-CiCi	
703.27	167.11	591.33	536.16	6.36		OSF1.50	9620.00	7276.00				MINPT-O-EOU	
705.04	169.29	591.65	535.75	6.29		OSF1.50	9670.00	7276.00				MinPt-O-ADP	
714.25	215.44	570.10	498.82	5.00		OSF1.50	10490.00	7276.00	OSF<5.00			Enter Alert	
704.97	244.47	541.46	460.50	4.34		OSF1.50	10980.00	7276.00				MinPt-CiCi	
705.82	247.42	540.34	458.41	4.30		OSF1.50	11040.00	7276.00				MINPT-O-EOU	
707.94	249.90	540.80	458.04	4.27		OSF1.50	11090.00	7276.00				MinPt-O-ADP	
719.32	276.57	534.41	442.75	3.92		OSF1.50	11500.00	7276.00				MinPt-CiCi	
720.71	283.40	531.24	437.31	3.83		OSF1.50	11620.00	7276.00				MINPT-O-EOU	
721.90	284.88	531.44	437.02	3.81		OSF1.50	11650.00	7276.00				MinPt-O-ADP	
707.45	375.61	456.51	331.84	2.83		OSF1.50	13030.00	7276.00				MinPt-CiCi	
710.76	388.59	451.17	322.17	2.75		OSF1.50	13240.00	7276.00				MINPT-O-EOU	
713.02	391.29	451.63	321.73	2.74		OSF1.50	13290.00	7276.00				MinPt-O-ADP	
715.41	393.58	452.49	321.83	2.73		OSF1.50	13330.00	7276.00				MinPt-O-ADP	
700.97	513.50	358.10	187.46	2.05		OSF1.50	15090.00	7276.00				MinPt-CiCi	
704.08	525.36	353.30	178.72	2.01		OSF1.50	15280.00	7276.00				MINPT-O-EOU	
706.82	528.65	353.85	178.17	2.01		OSF1.50	15340.00	7276.00				MinPt-O-ADP	
702.92	606.62	297.98	96.31	1.74		OSF1.50	16460.00	7276.00				MinPt-CiCi	
706.79	620.46	292.61	86.33	1.71		OSF1.50	16680.00	7276.00				MINPT-O-EOU	
702.23	683.16	246.25	19.06	1.54		OSF1.50	17580.00	7276.00				MinPt-CiCi	
702.33	683.49	246.14	18.85	1.54		OSF1.50	17590.00	7276.00				MinPts	
710.96	679.63	257.33	31.33	1.57		OSF1.50	17688.46	7276.00				TD	
Desha 4-15-1 MWD 0' to 11504' - PR (Def Survey)													Warning Alert
312.38	32.81	310.57	279.57	N/A		MAS = 10.00 (m)	0.00	0.00				Surface	
312.30	32.81	310.49	279.49	N/A		MAS = 10.00 (m)	23.00	23.00				WRP	
312.27	32.81	309.39	279.45	289.09		MAS = 10.00 (m)	180.00	180.00				MinPts	
103.25	32.81	81.09	70.44	4.94		MAS = 10.00 (m)	2110.00	2078.09	OSF<5.00			Enter Alert	
82.95	39.19	56.29	43.76	3.25		OSF1.50	2890.00	2753.01				MinPt-CiCi	
82.97	39.23	56.28	43.74	3.24		OSF1.50	2810.00	2762.79				MinPts	
83.12	39.32	56.37	43.80	3.24		OSF1.50	2830.00	2782.35				MinPt-O-SF	
181.81	55.73	144.12	126.07	4.99		OSF1.50	3980.00	3907.21	OSF>5.00			Exit Alert	
373.02	114.48	296.16	258.53	4.94		OSF1.50	7080.00	6931.09	OSF<5.00			Enter Alert	
338.48	115.76	260.78	222.72	4.43		OSF1.50	7220.00	7042.97				MinPt-O-SF	
337.36	115.22	260.02	222.15	4.43		OSF1.50	7240.00	7057.54				MinPts	
337.20	114.87	260.09	222.33	4.44		OSF1.50	7250.00	7064.69				MinPt-CiCi	
355.43	108.00	282.89	247.43	4.99		OSF1.50	7370.00	7142.33	OSF>5.00			Exit Alert	
10210.14	112.90	10134.35	10097.25	137.59		OSF1.50	17688.46	7276.00				TD	
Buford 33-8-2L R0 mdy 27Jul22 (Def Plan)													Warning Alert
102.04	32.81	101.05	69.23	N/A		MAS = 10.00 (m)	0.00	0.00				Surface	
102.04	32.81	101.05	69.23	N/A		MAS = 10.00 (m)	23.00	23.00				WRP	
102.04	32.81	99.17	69.23	53.50		MAS = 10.00 (m)	250.00	250.00				MinPts	
102.20	32.81	99.03	69.39	46.36		MAS = 10.00 (m)	280.00	280.00				MINPT-O-EOU	
189.44	32.81	179.21	156.63	20.39		MAS = 10.00 (m)	980.00	972.78				MinPt-O-SF	
285.52	32.81	265.86	252.71	15.24		MAS = 10.00 (m)	1800.00	1774.86				MinPt-O-SF	
580.04	112.26	504.87	467.78	7.51		OSF1.50	6600.00	6470.38				MinPt-O-SF	
985.75	266.69	807.66	719.09	5.56		OSF1.50	11480.00	7276.00				MinPt-CiCi	
991.67	298.67	792.22	692.99	4.99		OSF1.50	12020.00	7276.00	OSF<5.00			Enter Alert	
1055.72	654.64	618.95	401.07	2.42		OSF1.50	17688.46	7276.00				MinPts	
Desha 4-10-2L MWD 0' to 16971' - PR (Def Survey)													Warning Alert
290.43	32.81	288.62	257.62	N/A		MAS = 10.00 (m)	0.00	0.00				Surface	
290.26	32.81	288.44	257.45	N/A		MAS = 10.00 (m)	23.00	23.00				MinPts	
138.57	32.81	117.29	105.78	6.96		MAS = 10.00 (m)	2000.00	1970.49				MinPts	
138.61	32.81	117.26	105.80	6.94		MAS = 10.00 (m)	2010.00	1980.27				MINPT-O-EOU	
139.62	32.81	117.99	106.81	6.89		MAS = 10.00 (m)	2050.00	2019.40				MinPt-O-SF	
201.78	42.25	173.06	159.51	7.39		OSF1.50	2890.00	2841.04				MinPt-CiCi	
201.92	42.66	172.95	159.27	7.32		OSF1.50	2920.00	2870.39				MINPT-O-EOU	
202.04	42.79	172.98	159.25	7.30		OSF1.50	2930.00	2880.17				MinPt-O-ADP	
201.49	46.11	170.22	155.39	6.74		OSF1.50	3190.00	3134.48				MinPt-CiCi	
201.57	46.37	170.12	155.20	6.70		OSF1.50	3210.00	3154.05				MINPT-O-EOU	
201.80	46.64	170.17	155.16	6.67		OSF1.50	3230.00	3173.61				MinPt-O-ADP	
203.25	47.15	171.28	156.10	6.64		OSF1.50	3270.00	3212.73				MinPt-O-SF	
224.50	50.86	190.05	173.63	6.79		OSF1.50	3520.00	3457.27				MinPt-O-SF	
263.20	59.39	223.07	203.81	6.79		OSF1.50	4160.00	4083.27				MinPt-O-SF	
350.17	74.29	300.11	275.88	7.19		OSF1.50	5160.00	5061.41				MinPt-O-SF	
387.23	81.89	332.10	305.34	7.21		OSF1.50	5700.00	5589.60				MinPt-O-SF	
453.61	93.30	390.88	360.31	7.39		OSF1.50	6430.00	6303.64				MinPt-O-SF	
337.15	103.86	267.37	233.29	4.92		OSF1.50	7060.00	6913.84	OSF<5.00			Enter Alert	
241.94	115.08	164.65	126.86	3.18		OSF1.50	7310.00	7105.42				MinPts	
342.89	104.23	272.87	238.66	4.99		OSF1.50	7550.00	7227.64	OSF>5.00			Exit Alert	
7198.00	105.45	7127.17	7092.55	103.55		OSF1.50	14690.00	7276.00				MinPt-O-SF	
10168.88	110.78	10094.49	10058.10	139.69		OSF1.50	17688.46	7276.00				TD	
Buford 33-7-1L R0 mdy 27Jul22 (Def Plan)													Warning Alert
148.48	32.81	147.50	115.67	N/A		MAS = 10.00 (m)	0.00	0.00				Surface	
148.48	32.81	147.50	115.67	N/A		MAS = 10.00 (m)	23.00	23.00				WRP	
148.48	32.81	145.61	115.67	78.08		MAS = 10.00 (m)	250.00	250.00				MinPts	
149.20	32.81	143.47	116.39	31.18		MAS = 10.00 (m)	540.00	539.50				MINPT-O-EOU	
206.71	32.81	195.31	173.90	19.75		MAS = 10.00 (m)	1090.00	1080.38				MinPt-O-SF	
916.18	109.65	842.75	806.53	12.63		OSF1.50	6550.00	6421.03				MinPt-O-SF	
1421.66	427.71	1136.20	993.96	4.99		OSF1.50	14100.00	7276.00	OSF<5.00			Enter Alert	
1366.77	655.85	929.21	710.93	3.13		OSF1.50	17688.46	7276.00				MinPts	
Buford 33-8-4L R0 mdy 27Jul22 (Def Plan)													Warning Alert
150.65	32.81	149.67	117.85	N/A		MAS = 10.00 (m)	0.00	0.00				Surface	
150.65	32.81	149.67	117.85	N/A		MAS = 10.00 (m)	23.00	23.00				WRP	
150.65	32.81	147.78	117.85	79.23		MAS = 10.00 (m)	250.00	250.00				MinPts	
151.04	32.81	147.10	118.23	50.71		MAS = 10.00 (m)	360.00	359.97				MINPT-O-EOU	

...Confluence 33-01N-65W (Freedom 33 Pad)\Buford 33-10-2L\Original Hole\Buford 33-10-2L R0 mdy 27Jul22

Offset Trajectory	Separation			Allow Dev. (ft)	Sep. Fact.	Controlling Rule	Reference Trajectory		Risk Level			Alert	Status
	Cl-Ct (ft)	MAS (ft)	EOU (ft)				MD (ft)	TVD (ft)	Alert	Minor	Major		
	252.23	32.81	241.40	219.43	25.50	MAS = 10.00 (m)	1040.00	1031.47				MinPt-O-SF	
	427.01	32.81	407.09	394.20	22.50	MAS = 10.00 (m)	1790.00	1765.08				MinPt-O-SF	
	1198.06	110.88	1123.81	1087.18	16.34	OSF1.50	6600.00	6470.38				MinPt-O-SF	
	1548.88	112.58	1473.50	1436.30	20.81	OSF1.50	7820.00	7276.00				MinPt-O-SF	
	1577.81	474.36	1261.24	1103.45	5.00	OSF1.50	14890.00	7276.00	OSF<5.00			Enter Alert	
	1577.47	651.00	1143.14	926.47	3.64	OSF1.50	17688.46	7276.00				MinPts	
Buford 33-7-3L R0 mdv 27Jul22 (Def Plan)													
	156.99	32.81	156.01	124.19	N/A	MAS = 10.00 (m)	0.00	0.00				Surface	Warning Alert
	156.99	32.81	156.01	124.19	N/A	MAS = 10.00 (m)	23.00	23.00				WRP	
	156.99	32.81	154.12	124.19	82.59	MAS = 10.00 (m)	250.00	250.00				MinPts	
	157.21	32.81	153.76	124.41	63.19	MAS = 10.00 (m)	310.00	310.00				MINPT-O-EOU	
	476.59	32.81	456.59	443.78	25.00	MAS = 10.00 (m)	1800.00	1774.86				MinPt-O-SF	
	1460.31	112.10	1385.24	1348.20	19.70	OSF1.50	6600.00	6470.38				MinPt-O-SF	
	1832.21	115.39	1754.96	1716.82	24.01	OSF1.50	7820.00	7276.00				MinPt-O-SF	
	1861.19	559.49	1487.87	1301.70	5.00	OSF1.50	16170.00	7276.00	OSF<5.00			Enter Alert	
	1860.99	656.33	1423.11	1204.66	4.26	OSF1.50	17688.46	7276.00				MinPts	
	Buford 33-6-2L R0 mdv 27Jul22 (Def Plan)												
	167.03	32.81	166.04	134.22	N/A	MAS = 10.00 (m)	0.00	0.00				Surface	Warning Alert
	167.03	32.81	166.04	134.22	N/A	MAS = 10.00 (m)	23.00	23.00				WRP	
	167.03	32.81	164.16	134.22	87.90	MAS = 10.00 (m)	250.00	250.00				MinPts	
	167.11	32.81	164.05	134.31	79.94	MAS = 10.00 (m)	270.00	270.00				MINPT-O-EOU	
	517.97	32.81	498.28	485.16	27.64	MAS = 10.00 (m)	1780.00	1755.30				MinPt-O-SF	
	1796.13	113.36	1720.23	1682.77	23.96	OSF1.50	6590.00	6460.47				MinPt-O-SF	
	2135.63	122.67	2053.52	2012.96	26.31	OSF1.50	7590.00	7241.04				MinPts	
	2141.75	123.23	2059.27	2018.52	26.27	OSF1.50	7730.00	7271.00				MinPt-O-SF	
	2156.42	647.69	1724.30	1508.73	5.00	OSF1.50	17520.00	7276.00	OSF<5.00			Enter Alert	
	2156.39	658.45	1717.09	1497.93	4.92	OSF1.50	17688.46	7276.00				MinPts	
	Champlin 365 Amoco Unit 1 Blind 0' to 8044' - DA (Def Survey)												
	709.38	32.81	707.57	676.57	N/A	MAS = 10.00 (m)	0.00	0.00				Surface	Warning Alert
	709.18	32.81	707.34	676.37	28238.12	MAS = 10.00 (m)	10.00	10.00				MinPt-O-SF	
	709.12	32.81	707.23	676.32	8565.41	MAS = 10.00 (m)	23.00	23.00				WRP	
	709.12	32.81	699.83	676.32	94.60	MAS = 10.00 (m)	250.00	250.00				MinPts	
	715.49	33.01	692.88	682.48	34.31	OSF1.50	580.00	579.27				MINPT-O-EOU	
	722.49	41.47	694.24	681.02	27.26	OSF1.50	720.00	717.89				MinPt-O-ADP	
	1413.03	426.44	1128.20	986.59	4.98	OSF1.50	7270.00	7078.67	OSF<5.00			Enter Alert	
	731.45	440.14	437.49	291.32	2.50	OSF1.50	8590.00	7276.00				MinPt-CtCt	
	731.46	440.17	437.48	291.29	2.50	OSF1.50	8600.00	7276.00				MinPts	
	1461.37	440.19	1167.38	1021.18	4.99	OSF1.50	9860.00	7276.00	OSF>5.00			Exit Alert	
	9122.98	441.21	8828.30	8681.77	31.12	OSF1.50	17688.46	7276.00				TD	
Penrod 4-3 Blind 0' to 8004' - PA (Def Survey)													
	2064.65	32.81	2062.84	2031.84	N/A	MAS = 10.00 (m)	0.00	0.00				Surface	Warning Alert
	2064.54	32.81	2062.71	2031.73	126909.09	MAS = 10.00 (m)	10.00	10.00				MinPt-O-SF	
	2064.48	32.81	2062.65	2031.67	234490.90	MAS = 10.00 (m)	23.00	23.00				WRP	
	1104.99	333.71	881.98	771.28	4.98	OSF1.50	5660.00	5550.48	OSF<5.00			Enter Alert	
	945.48	394.51	681.94	550.97	3.60	OSF1.50	6680.00	6550.14				MinPt-CtCt	
	946.19	396.91	681.05	549.28	3.58	OSF1.50	6720.00	6590.13				MINPT-O-EOU	
	947.21	398.10	681.27	549.11	3.58	OSF1.50	6740.00	6610.10				MinPt-O-ADP	
	954.29	402.25	685.59	552.05	3.57	OSF1.50	6810.00	6679.57	OSF>5.00			MinPt-O-SF	
	1447.19	436.46	1155.68	1010.73	4.99	OSF1.50	7670.00	7261.43				Exit Alert	
	11272.65	440.50	10978.45	10832.15	38.52	OSF1.50	17688.46	7276.00				TD	
	Robin 9-3HZ IFR1+MS 0' to 18437' - PR (Def Survey)												
	12559.05	179.27	12439.21	12379.79	105.68	OSF1.50	0.00	0.00				MinPt-O-SF	Warning Alert
	12545.57	179.04	12425.88	12366.53	105.68	OSF1.50	23.00	23.00				MinPt-O-SF	
	11358.85	114.70	11282.06	11244.15	149.81	OSF1.50	5040.00	4944.03				MinPt-O-ADP	
	11358.66	114.48	11282.01	11244.18	150.10	OSF1.50	5070.00	4973.38				MINPT-O-EOU	
	11358.51	114.05	11282.15	11244.46	150.67	OSF1.50	5130.00	5032.07				MinPt-CtCt	
	11450.98	109.51	11377.64	11341.47	158.26	OSF1.50	6600.00	6470.38				MinPt-O-SF	
	1024.31	312.24	815.82	712.07	4.93	OSF1.50	17670.00	7276.00	OSF<5.00			Enter Alert	
	1009.01	316.79	797.49	692.22	4.79	OSF1.50	17688.46	7276.00				MinPts	
Champlin 365 Amoco Unit A 2 Blind 0' to 8100' - PA (Def Survey)													
	3253.94	32.81	3251.84	3221.13	11469.21	MAS = 10.00 (m)	0.00	0.00				Surface	Warning Alert
	3253.94	32.81	3251.25	3221.13	3710.63	MAS = 10.00 (m)	23.00	23.00				WRP	
	3253.94	32.81	3242.52	3221.13	338.49	MAS = 10.00 (m)	250.00	250.00				MinPts	
	3256.33	32.81	3239.96	3223.52	224.02	MAS = 10.00 (m)	370.00	369.96				MINPT-O-EOU	
	1489.07	449.75	1188.70	1039.32	4.98	OSF1.50	10420.00	7276.00	OSF<5.00			Enter Alert	
	1064.39	472.77	748.67	591.61	3.38	OSF1.50	11460.00	7276.00				MinPt-CtCt	
	1064.42	472.92	748.61	591.50	3.38	OSF1.50	11470.00	7276.00				MINPT-O-EOU	
	1064.55	473.06	748.64	591.49	3.38	OSF1.50	11480.00	7276.00				MinPt-O-ADP	
	1064.77	473.19	748.77	591.58	3.38	OSF1.50	11490.00	7276.00				MinPt-O-SF	
	1544.12	465.14	1233.49	1078.98	4.99	OSF1.50	12580.00	7276.00	OSF>5.00			Exit Alert	
	6317.42	447.68	6018.43	5869.74	21.24	OSF1.50	17688.46	7276.00				TD	
Robin 9-4HZ IFR1+MS 0' to 18437' - PR (Def Survey)													
	12527.94	171.77	12413.10	12356.18	110.03	OSF1.50	0.00	0.00				MinPt-O-SF	Warning Alert
	12514.61	171.54	12399.92	12343.07	110.05	OSF1.50	23.00	23.00				WRP	
	11368.14	108.44	11295.52	11259.71	158.68	OSF1.50	4950.00	4856.00				MinPt-O-ADP	
	11367.96	108.22	11295.45	11259.75	159.00	OSF1.50	4980.00	4885.35				MINPT-O-EOU	
	11367.84	107.86	11295.60	11259.98	159.53	OSF1.50	5030.00	4934.25	OSF<5.00			MinPt-CtCt	
	1228.07	372.98	979.09	855.09	4.95	OSF1.50	17640.00	7276.00				Enter Alert	
	1193.09	384.52	936.41	808.57	4.66	OSF1.50	17688.46	7276.00				MinPts	
Strawder 1 Blind 0' to 8060' - TA (Def Survey)													
	6123.09	32.81	6121.28	6090.28	N/A	MAS = 10.00 (m)	0.00	0.00				Surface	Warning Alert
	6123.02	32.81	6121.20	6090.21	730305.38	MAS = 10.00 (m)	20.00	20.00				MinPt-O-SF	
	6123.01	32.81	6121.19	6090.20	825561.09	MAS = 10.00 (m)	23.00	23.00				WRP	
	6123.00	32.81	6113.31	6090.19	776.40	MAS = 10.00 (m)	250.00	250.00				MinPts	
	6125.46	32.81	6110.81	6092.65	476.98	MAS = 10.00 (m)	370.00	369.96				MINPT-O-EOU	
	1623.92	490.35	1296.49	1133.57	4.98	OSF1.50	13440.00	7276.00	OSF<5.00			Enter Alert	
	1342.68	533.81	986.27	808.86	3.78	OSF1.50	14350.00	7276.00				MinPt-CtCt	

Offset Trajectory	Separation			Allow Dev. (ft)	Sep. Fact.	Controlling Rule	Reference Trajectory		Risk Level			Alert	Status
	Ct-Ct (ft)	MAS (ft)	EOU (ft)				MD (ft)	TVD (ft)	Alert	Minor	Major		
1342.77	534.28	986.05	808.49	3.78		OSF1.50	14370.00	7276.00				MINPT-O-EOU	
1342.93	534.50	986.07	808.43	3.78		OSF1.50	14380.00	7276.00				MinPt-O-ADP	
1343.86	535.10	986.59	808.76	3.77		OSF1.50	14410.00	7276.00				MinPt-O-SF	
1714.74	516.90	1369.61	1197.85	4.99		OSF1.50	15420.00	7276.00	OSF<5.00			Exit Alert	
3595.16	469.65	3281.52	3125.51	11.52		OSF1.50	17688.46	7276.00				TD	
Robin 9-5HZ IFR1+MS 0' to 18381' - PR (Def Survey)													Warning Alert
12662.18	175.10	12545.11	12487.07	109.07		OSF1.50	0.00	0.00				MinPt-O-SF	
12648.59	174.89	12531.67	12473.70	109.09		OSF1.50	23.00	23.00				MinPt-O-SF	
11418.67	110.32	11344.80	11308.35	156.65		OSF1.50	5170.00	5071.19				MinPt-O-ADP	
11418.49	110.11	11344.76	11308.39	156.95		OSF1.50	5200.00	5100.54				MINPT-O-EOU	
11418.37	109.76	11344.87	11308.61	157.44		OSF1.50	5250.00	5149.44				MinPt-CtCt	
1437.96	435.55	1147.26	1002.41	4.96		OSF1.50	17660.00	7276.00	OSF<5.00			Enter Alert	
1421.09	441.30	1126.56	979.79	4.84		OSF1.50	17688.46	7276.00				MinPts	
Glen Young 2 Blind 0' to 7868' - PA (Def Survey)													Warning Alert
8241.27	32.81	8239.46	8208.46	N/A		MAS = 10.00 (m)	0.00	0.00				Surface	
8241.10	32.81	8239.26	8208.29	311588.51		MAS = 10.00 (m)	23.00	23.00				WRP	
8240.95	32.81	8232.84	8208.15	1306.17		MAS = 10.00 (m)	250.00	250.00				MinPts	
8243.44	32.81	8230.23	8210.63	726.26		MAS = 10.00 (m)	370.00	369.96				MINPT-O-EOU	
1756.17	529.65	1402.53	1226.52	4.98		OSF1.50	15510.00	7276.00	OSF<5.00			Enter Alert	
1458.88	594.09	1062.29	864.79	3.69		OSF1.50	16490.00	7276.00				MinPt-CtCt	
1459.05	594.64	1062.09	864.41	3.69		OSF1.50	16510.00	7276.00				MINPT-O-EOU	
1459.24	594.89	1062.11	864.35	3.69		OSF1.50	16520.00	7276.00				MinPt-O-ADP	
1460.67	595.78	1062.95	864.89	3.68		OSF1.50	16560.00	7276.00				MinPt-O-SF	
1865.32	562.07	1490.07	1303.25	4.99		OSF1.50	17650.00	7276.00	OSF>5.00			Exit Alert	
1889.52	560.03	1515.63	1329.49	5.07		OSF1.50	17688.46	7276.00				TD	
Desha 4-8-2L - Plan (Def Plan)													Pass
150.10	32.81	149.12	117.29	N/A		MAS = 10.00 (m)	0.00	0.00				Surface	
150.08	32.81	149.10	117.27	N/A		MAS = 10.00 (m)	23.00	23.00				WRP	
150.08	32.81	147.21	117.27	79.19		MAS = 10.00 (m)	250.00	250.00				MinPts	
150.27	32.81	147.02	117.46	66.04		MAS = 10.00 (m)	290.00	290.00				MINPT-O-EOU	
270.35	32.81	256.32	237.55	24.38		MAS = 10.00 (m)	1140.00	1129.29				MinPt-O-SF	
1955.50	107.60	1883.44	1847.90	27.50		OSF1.50	6600.00	6470.38				MinPt-O-SF	
10340.98	146.01	10243.31	10194.97	106.95		OSF1.50	17688.46	7276.00				TD	
Desha 4-3-4L - Plan (Def Plan)													Pass
155.87	32.81	154.89	123.06	N/A		MAS = 10.00 (m)	0.00	0.00				Surface	
155.85	32.81	154.87	123.04	N/A		MAS = 10.00 (m)	23.00	23.00				WRP	
155.85	32.81	152.98	123.04	82.25		MAS = 10.00 (m)	250.00	250.00				MinPts	
156.09	32.81	152.75	123.28	65.90		MAS = 10.00 (m)	300.00	300.00				MINPT-O-EOU	
272.41	32.81	260.08	239.60	23.92		MAS = 10.00 (m)	1170.00	1158.63				MinPt-O-SF	
421.22	32.81	402.34	388.41	23.48		MAS = 10.00 (m)	1700.00	1677.05				MinPt-O-SF	
1732.92	106.38	1661.67	1626.54	24.65		OSF1.50	6600.00	6470.38				MinPt-O-SF	
10295.39	138.51	10202.72	10156.87	112.28		OSF1.50	17688.46	7276.00				TD	
Desha 4-9-1L - Plan (Def Plan)													Pass
165.41	32.81	164.43	132.60	N/A		MAS = 10.00 (m)	0.00	0.00				Surface	
165.39	32.81	164.41	132.58	N/A		MAS = 10.00 (m)	23.00	23.00				WRP	
165.39	32.81	162.53	132.58	87.32		MAS = 10.00 (m)	250.00	250.00				MinPts	
165.66	32.81	162.23	132.85	67.33		MAS = 10.00 (m)	310.00	310.00				MINPT-O-EOU	
408.96	32.81	390.11	376.15	22.85		MAS = 10.00 (m)	1700.00	1677.05				MinPt-O-SF	
1653.27	106.11	1582.21	1547.17	23.58		OSF1.50	6600.00	6470.38				MinPt-O-SF	
10330.12	135.84	10239.23	10194.28	114.89		OSF1.50	17688.46	7276.00				TD	
Desha 4-10-3L - Plan (Def Plan)													Pass
178.12	32.81	177.14	145.31	N/A		MAS = 10.00 (m)	0.00	0.00				Surface	
178.10	32.81	177.12	145.29	N/A		MAS = 10.00 (m)	23.00	23.00				WRP	
178.10	32.81	175.14	145.29	89.57		MAS = 10.00 (m)	260.00	260.00				MinPts	
178.38	32.81	174.86	145.57	69.92		MAS = 10.00 (m)	320.00	319.99				MINPT-O-EOU	
374.21	32.81	355.32	341.40	20.85		MAS = 10.00 (m)	1700.00	1677.05				MinPt-O-SF	
1409.82	105.94	1338.86	1303.88	20.13		OSF1.50	6700.00	6570.14				MinPt-O-SF	
10277.38	127.06	10192.35	10150.32	122.26		OSF1.50	17688.46	7276.00				TD	
Desha 4-11-2L - Plan (Def Plan)													Pass
193.37	32.81	192.39	160.56	N/A		MAS = 10.00 (m)	0.00	0.00				Surface	
193.36	32.81	192.37	160.55	N/A		MAS = 10.00 (m)	23.00	23.00				WRP	
193.36	32.81	190.39	160.55	97.30		MAS = 10.00 (m)	260.00	260.00				MinPts	
193.79	32.81	190.00	160.99	68.55		MAS = 10.00 (m)	350.00	349.98				MINPT-O-EOU	
346.81	32.81	327.32	314.00	18.69		MAS = 10.00 (m)	1760.00	1735.74				MinPt-O-SF	
1167.29	105.64	1096.53	1061.65	16.72		OSF1.50	6800.00	6669.70				MinPt-O-SF	
10263.62	119.33	10183.74	10144.29	130.07		OSF1.50	17688.46	7276.00				TD	
Desha 4-4-4L - Plan (Def Plan)													Pass
210.62	32.81	209.64	177.81	N/A		MAS = 10.00 (m)	0.00	0.00				Surface	
210.60	32.81	209.62	177.80	N/A		MAS = 10.00 (m)	23.00	23.00				WRP	
210.60	32.81	207.64	177.79	106.04		MAS = 10.00 (m)	260.00	260.00				MinPts	
211.16	32.81	207.09	178.35	68.14		MAS = 10.00 (m)	380.00	379.96				MINPT-O-EOU	
312.29	32.81	292.57	279.48	16.61		MAS = 10.00 (m)	1800.00	1774.86				MinPt-O-SF	
948.39	105.20	877.92	843.18	13.64		OSF1.50	7000.00	6860.51				MinPt-CtCt	
948.44	105.46	877.80	842.98	13.60		OSF1.50	7050.00	6905.12				MINPT-O-EOU	
948.47	105.50	877.81	842.97	13.60		OSF1.50	7060.00	6913.84				MinPt-O-ADP	
949.02	105.70	878.23	843.32	13.58		OSF1.50	7120.00	6964.70				MinPt-O-SF	
10224.15	112.91	10148.55	10111.24	137.01		OSF1.50	17688.46	7276.00				TD	
Desha 4-12-1L - Plan (Def Plan)													Pass
231.23	32.81	230.25	198.42	N/A		MAS = 10.00 (m)	0.00	0.00				Surface	
231.22	32.81	230.23	198.41	N/A		MAS = 10.00 (m)	23.00	23.00				WRP	
231.21	32.81	228.25	198.41	116.48		MAS = 10.00 (m)	260.00	260.00				MinPts	
231.86	32.81	227.52	199.05	68.83		MAS = 10.00 (m)	410.00	409.92				MINPT-O-EOU	
298.99	32.81	279.09	266.18	15.75		MAS = 10.00 (m)	1850.00	1823.77				MinPt-O-SF	
790.28	107.07	718.57	683.21	11.16		OSF1.50	7120.00	6964.70				MinPts	
10254.51	110.11	10180.77	10144.40	140.94		OSF1.50	17688.46	7276.00				TD	

...Confluence 33-01N-65W (Freedom 33 Pad)\Buford 33-10-2L\Original Hole\Buford 33-10-2L R0 mdv 27Jul22



Offset Trajectory	Separation			Allow Dev. (ft)	Sep. Fact.	Controlling Rule	Reference Trajectory		Risk Level			Alert	Status
	Ct-Ct (ft)	MAS (ft)	EOU (ft)				MD (ft)	TVD (ft)	Alert	Minor	Major		
Desha 4-13-3L - Plan (Def Plan)													
	248.17	32.81	247.19	215.36	N/A	MAS = 10.00 (m)	0.00	0.00					Pass
	248.16	32.81	247.18	215.35	N/A	MAS = 10.00 (m)	23.00	23.00					Surface
	248.15	32.81	245.10	215.34	119.49	MAS = 10.00 (m)	270.00	270.00					WRP
	249.11	32.81	244.12	216.30	61.95	MAS = 10.00 (m)	480.00	479.75					MinPts
	241.72	32.81	226.82	208.91	17.30	MAS = 10.00 (m)	1390.00	1373.82					MINPT-O-EOU
	242.99	32.81	225.55	210.18	14.70	MAS = 10.00 (m)	1600.00	1579.23					MinPts
	584.89	93.51	522.22	491.38	9.47	OSF1.50	6539.84	6411.08					MINPT-O-EOU
	517.58	104.92	447.30	412.66	7.46	OSF1.50	7280.00	7085.51					MinPts
	10219.44	105.01	10149.11	10114.43	147.35	OSF1.50	17688.46	7276.00					TD
Robin 9-1HZ IFR1+MS 0' to 18459' - PR (Def Survey)													
	12527.01	181.87	12405.44	12345.14	103.87	OSF1.50	0.00	0.00					Pass
	12513.61	181.65	12392.18	12331.96	103.89	OSF1.50	23.00	23.00					MinPt-O-SF
	11356.11	121.47	11274.81	11234.65	141.37	OSF1.50	4970.00	4875.56					MinPt-O-SF
	11355.95	121.27	11274.77	11234.68	141.60	OSF1.50	5000.00	4904.91					MinPt-O-ADP
	11355.84	120.94	11274.88	11234.90	141.98	OSF1.50	5050.00	4953.82					MINPT-O-EOU
	854.34	131.21	766.54	723.13	9.83	OSF1.50	17688.46	7276.00					MinPts
Robin 9-2HZ IFR1+MS 0' to 18623' - PR (Def Survey)													
	12649.95	181.10	12528.89	12468.85	105.34	OSF1.50	0.00	0.00					Pass
	12636.34	180.88	12515.42	12455.46	105.35	OSF1.50	23.00	23.00					MinPt-O-SF
	11407.61	117.40	11329.02	11290.22	146.98	OSF1.50	5160.00	5061.41					MinPt-O-SF
	11407.45	117.20	11328.99	11290.25	147.23	OSF1.50	5190.00	5090.75					MinPt-O-ADP
	11407.34	116.87	11329.10	11290.47	147.64	OSF1.50	5240.00	5139.66					MINPT-O-EOU
	11485.78	113.07	11410.07	11372.71	153.70	OSF1.50	6600.00	6470.38					MinPts
	948.91	234.46	792.27	714.45	6.09	OSF1.50	17688.46	7276.00					MinPts
Robin 9-6HZ IFR1+MS 0' to 18139' - PR (Def Survey)													
	12606.11	171.41	12491.51	12434.70	110.95	OSF1.50	0.00	0.00					Pass
	12592.80	171.19	12478.35	12421.61	110.97	OSF1.50	23.00	23.00					MinPt-O-SF
	11439.81	108.79	11366.95	11331.02	159.16	OSF1.50	4990.00	4895.13					WRP
	11439.64	108.57	11366.93	11331.06	159.48	OSF1.50	5020.00	4924.47					MinPt-O-ADP
	11439.52	108.22	11367.05	11331.30	160.01	OSF1.50	5070.00	4973.38					MINPT-O-EOU
	11538.73	103.71	11469.26	11435.02	168.47	OSF1.50	6600.00	6470.38					MinPts
	1671.21	467.11	1359.48	1204.10	5.37	OSF1.50	17688.46	7276.00					MinPts
Robin 9-7HZ IFR1+MS 0' to 18107' - PR (Def Survey)													
	12621.68	169.65	12508.25	12452.03	112.24	OSF1.50	0.00	0.00					Pass
	12608.47	169.43	12495.19	12439.04	112.27	OSF1.50	23.00	23.00					MinPt-O-SF
	11474.61	108.86	11401.71	11365.75	159.54	OSF1.50	4960.00	4865.78					WRP
	11474.50	108.72	11401.69	11365.78	159.74	OSF1.50	4980.00	4885.35					MinPt-O-ADP
	11474.37	108.39	11401.78	11365.98	160.24	OSF1.50	5030.00	4934.25					MINPT-O-EOU
	1957.96	489.11	1631.56	1468.85	6.01	OSF1.50	17688.46	7276.00					MinPts
Robin 9-8HZ IFR1+MS 0' to 18257' - PR (Def Survey)													
	12789.82	171.10	12675.42	12618.71	112.76	OSF1.50	0.00	0.00					Pass
	12776.36	170.90	12662.10	12605.46	112.78	OSF1.50	23.00	23.00					MinPt-O-SF
	11556.76	111.57	11482.05	11445.19	156.75	OSF1.50	5200.00	5100.54					MinPt-O-SF
	11556.66	111.45	11482.03	11445.21	156.91	OSF1.50	5220.00	5120.10					MinPt-O-ADP
	11556.56	111.17	11482.12	11445.39	157.31	OSF1.50	5270.00	5169.01					MINPT-O-EOU
	2176.14	499.00	1843.15	1677.14	6.55	OSF1.50	17688.46	7276.00					MinPts
Robin 9-9HZ IFR1+MS 0' to 18068' - PR (Def Survey)													
	12767.88	170.37	12653.97	12597.51	113.06	OSF1.50	0.00	0.00					Pass
	12754.67	170.18	12640.89	12584.49	113.07	OSF1.50	23.00	23.00					MinPt-O-SF
	11596.47	114.81	11519.61	11481.67	152.81	OSF1.50	5060.00	4963.60					MinPt-O-SF
	11596.33	114.64	11519.58	11481.70	153.03	OSF1.50	5090.00	4992.94					MinPt-O-ADP
	11596.27	114.42	11519.66	11481.85	153.33	OSF1.50	5130.00	5032.07					MINPT-O-EOU
	11681.77	111.54	11607.08	11570.23	158.49	OSF1.50	6539.84	6411.08					MinPts
	2507.05	510.84	2166.16	1996.21	7.37	OSF1.50	17688.46	7276.00					MinPts
Robin 9-10HZ IFR1+MS 0' to 17999' - PR (Def Survey)													
	12764.90	171.77	12650.06	12593.13	112.11	OSF1.50	0.00	0.00					Pass
	12751.85	171.58	12637.14	12580.27	112.12	OSF1.50	23.00	23.00					MinPt-O-SF
	11629.89	119.06	11550.19	11510.84	147.73	OSF1.50	4980.00	4885.35					MinPt-O-SF
	11629.76	118.90	11550.16	11510.86	147.94	OSF1.50	5010.00	4914.69					MinPt-O-ADP
	11629.69	118.68	11550.24	11511.01	148.20	OSF1.50	5050.00	4953.82					MINPT-O-EOU
	11724.86	115.79	11647.34	11609.07	153.18	OSF1.50	6539.84	6411.08					MinPts
	2793.22	518.60	2447.17	2274.63	8.09	OSF1.50	17688.46	7276.00					MinPts
Neckain 1 Blind 0' to 8061' - TA (Def Survey)													
	6429.13	32.81	6427.32	6396.33	N/A	MAS = 10.00 (m)	0.00	0.00					Pass
	6429.01	32.81	6427.18	6396.20	379229.13	MAS = 10.00 (m)	23.00	23.00					Surface
	6428.96	32.81	6420.06	6396.15	910.10	MAS = 10.00 (m)	250.00	250.00					WRP
	6431.85	32.81	6417.23	6399.04	502.31	MAS = 10.00 (m)	390.00	389.94					MinPts
	3523.83	518.52	3177.61	3005.31	10.22	OSF1.50	13780.00	7276.00					MINPT-O-EOU
	3524.30	519.95	3177.13	3004.35	10.19	OSF1.50	13840.00	7276.00					MinPts
	3524.68	520.42	3177.21	3004.27	10.19	OSF1.50	13860.00	7276.00					MINPT-O-EOU
	3552.14	528.25	3199.44	3023.89	10.11	OSF1.50	14230.00	7276.00					MinPts
	5260.68	532.86	4904.90	4727.82	14.85	OSF1.50	17688.46	7276.00					TD
Glen Young 1 Blind 0' to 8050' - PA (Def Survey)													
	9099.26	32.81	9097.45	9066.45	N/A	MAS = 10.00 (m)	0.00	0.00					Pass
	9099.19	32.81	9097.37	9066.38	998493.53	MAS = 10.00 (m)	20.00	20.00					Surface
	9099.18	32.81	9097.36	9066.38	N/A	MAS = 10.00 (m)	23.00	23.00					MinPt-O-SF
	9099.17	32.81	9089.92	9066.36	1222.96	MAS = 10.00 (m)	250.00	250.00					WRP
	9101.87	32.81	9087.27	9069.06	711.60	MAS = 10.00 (m)	380.00	379.96					MinPts
	3713.62	601.99	3311.76	3111.63	9.27	OSF1.50	16700.00	7276.00					MINPT-O-EOU
	3714.28	604.09	3311.02	3110.19	9.24	OSF1.50	16770.00	7276.00					MinPts
	3715.25	605.25	3311.22	3110.00	9.23	OSF1.50	16810.00	7276.00					MINPT-O-EOU
	3744.54	614.40	3334.41	3130.14	9.16	OSF1.50	17180.00	7276.00					MinPts
	3842.98	622.15	3427.68	3220.83	9.29	OSF1.50	17688.46	7276.00					TD

...Confluence 33-01N-65W (Freedom 33 Pad)\Burfod 33-10-2L\Original Hole\Burfod 33-10-2L R0 mdv 27Jul22

Offset Trajectory	Separation			Allow Dev. (ft)	Sep. Fact.	Controlling Rule	Reference Trajectory		Risk Level			Alert	Status
	Ct-Ct (ft)	MAS (ft)	EOU (ft)				MD (ft)	TVD (ft)	Alert	Minor	Major		
Young 01N-65W-28-8N MWD 0' to 11808' - PR (Def Survey)													Pass
	9605.71	146.49	9507.44	9459.22	99.58	OSF1.50	0.00	0.00					Surface
	9588.41	146.68	9490.01	9441.72	99.26	OSF1.50	23.00	23.00					WRP
	7312.89	174.03	7196.33	7138.86	63.60	OSF1.50	6160.00	6039.55					MinPt-CtCt
	7312.92	174.10	7196.32	7138.82	63.58	OSF1.50	6180.00	6059.11					MinPts
	4111.91	369.36	3865.14	3742.55	16.77	OSF1.50	13220.00	7276.00					MinPt-CtCt
	4112.62	371.62	3864.34	3741.00	16.67	OSF1.50	13300.00	7276.00					MINPT-O-EQU
	4113.04	372.15	3864.40	3740.88	16.64	OSF1.50	13320.00	7276.00					MinPts
	4117.53	372.99	3868.33	3744.53	16.62	OSF1.50	13490.00	7276.00					MinPt-O-SF
	4126.88	373.23	3877.52	3753.65	16.65	OSF1.50	13910.00	7276.00					MinPt-O-SF
	4126.75	371.12	3878.80	3755.63	16.75	OSF1.50	13990.00	7276.00					MinPt-CtCt
	4126.79	371.63	3878.50	3755.15	16.72	OSF1.50	14020.00	7276.00					MinPts
	4119.62	374.01	3869.74	3745.61	16.59	OSF1.50	14310.00	7276.00					MinPt-CtCt
	4120.10	376.19	3868.78	3743.92	16.49	OSF1.50	14430.00	7276.00					MINPT-O-EQU
	4120.63	376.94	3868.79	3743.68	16.46	OSF1.50	14510.00	7276.00					MinPts
	4091.57	389.14	3831.61	3702.43	15.83	OSF1.50	15220.00	7276.00					MinPt-CtCt
	4093.23	394.12	3829.95	3699.11	15.64	OSF1.50	15380.00	7276.00					MINPT-O-EQU
	4093.67	394.73	3829.98	3698.94	15.61	OSF1.50	15400.00	7276.00					MinPts
	4086.56	414.04	3810.00	3672.52	14.86	OSF1.50	16140.00	7276.00					MinPt-CtCt
	4089.01	422.18	3807.02	3666.82	14.58	OSF1.50	16370.00	7276.00					MINPT-O-EQU
	4089.14	430.29	3801.74	3658.84	14.30	OSF1.50	16620.00	7276.00					MinPt-CtCt
	4087.85	436.73	3796.16	3651.12	14.09	OSF1.50	16800.00	7276.00					MinPts
	4066.17	459.38	3759.38	3606.78	13.32	OSF1.50	17370.00	7276.00					MinPt-CtCt
	4063.25	469.48	3749.73	3593.77	13.02	OSF1.50	17610.00	7276.00					MinPt-CtCt
	4063.82	472.83	3748.07	3590.99	12.93	OSF1.50	17688.46	7276.00					MinPts