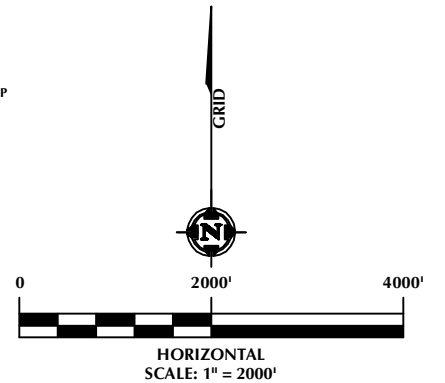
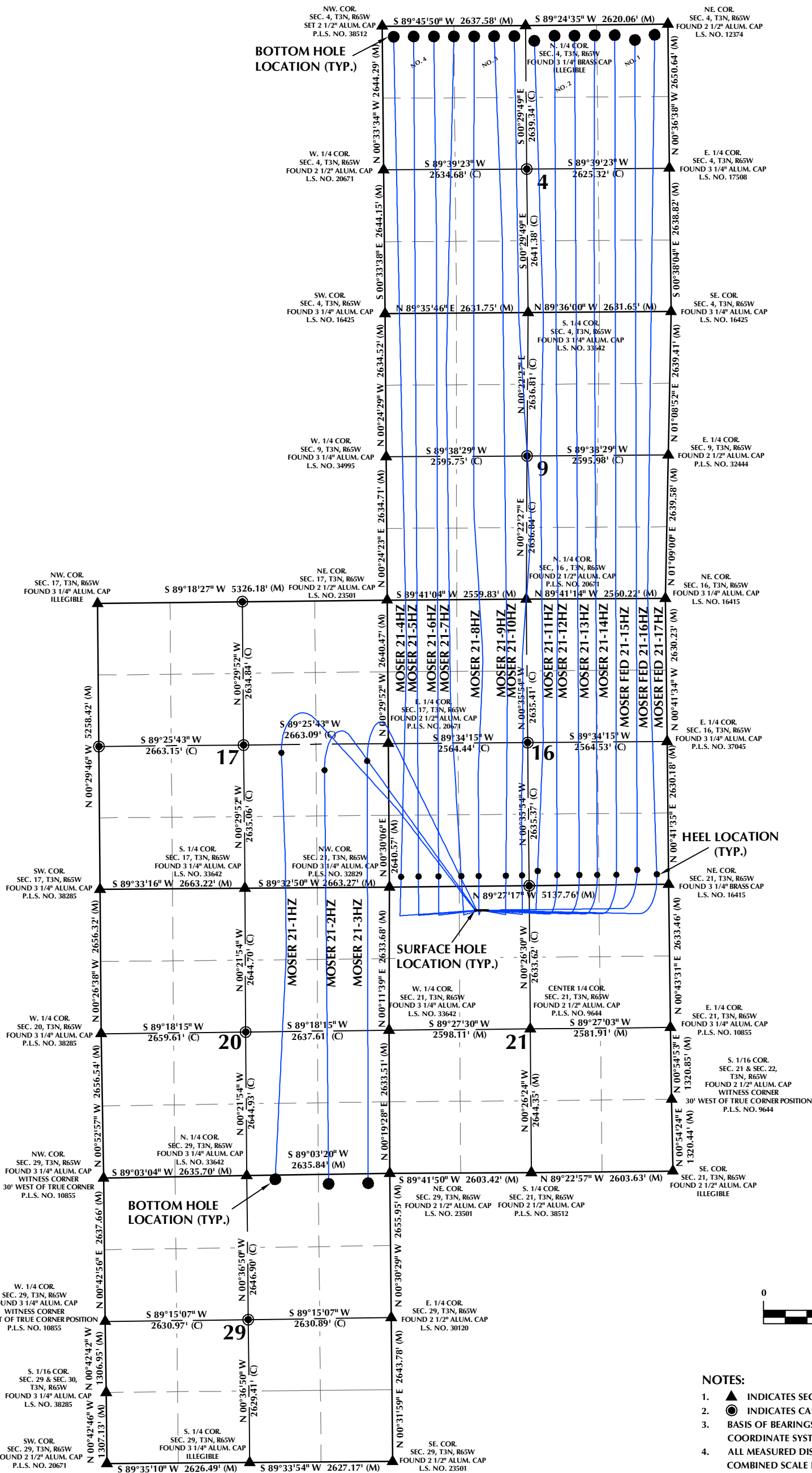


# DIRECTIONAL WELL PLAT (COGCC) / MULTI-WELL PLAN (OGED)

## SECTIONS 4, 9, 16, 17, 20, 21 & 29, T3N, R65W



**NOTES:**

1. ▲ INDICATES SECTION CORNER.
2. ● INDICATES CALCULATED CORNER.
3. BASIS OF BEARINGS DERIVED FROM COLORADO COORDINATE SYSTEM OF 1983, NORTH ZONE.
4. ALL MEASURED DISTANCES ARE GRID. COMBINED SCALE FACTOR: .0.99972745 CALCULATED FROM THE NW. CORNER OF SECTION 21, T3N, R65W.
5. WELL FOOTAGES ARE MEASURED AT RIGHT ANGLES TO THE SECTION LINES.

**WELL PAD - MOSER FED 3-21HZ**

**DIRECTIONAL WELL PLAT (COGCC) / MULTI-WELL PLAN (OGED)**  
**MOSER 21-1HZ, MOSER 21-2HZ, MOSER 21-3HZ,**  
**MOSER 21-4HZ, MOSER 21-5HZ, MOSER 21-6HZ,**  
**MOSER 21-7HZ, MOSER 21-8HZ, MOSER 21-9HZ,**  
**MOSER 21-10HZ, MOSER 21-11HZ, MOSER 21-12HZ,**  
**MOSER 21-13HZ, MOSER 21-14HZ, MOSER FED 21-15HZ,**  
**MOSER FED 21-16HZ & MOSER FED 21-17HZ**  
**LOCATED IN SECTIONS 4, 9, 16, 17, 20, 21 & 29**  
**T3N, R65W, 6TH P.M.**  
**WELD COUNTY, COLORADO**

**Kerr-McGee Oil &  
 Gas Onshore LP**  
 1099 18th Street  
 Denver, Colorado 80202



**CONSULTING, LLC**

**SHERIDAN OFFICE**      **LOVELAND OFFICE**  
 1095 Saberton Avenue      6706 North Franklin Avenue  
 Sheridan, Wyoming 82801      Loveland, Colorado 80538  
 Phone 307-674-0609      Phone 970-776-4331

DRAFTED BY:	AMK	CHECKED BY:	RKF	SHEET NO:
DATE DRAFTED:	6/3/22	DATE SURVEYED:	3/3/22	<b>1A</b>
REVISED:		FILE NAME:	21-48	

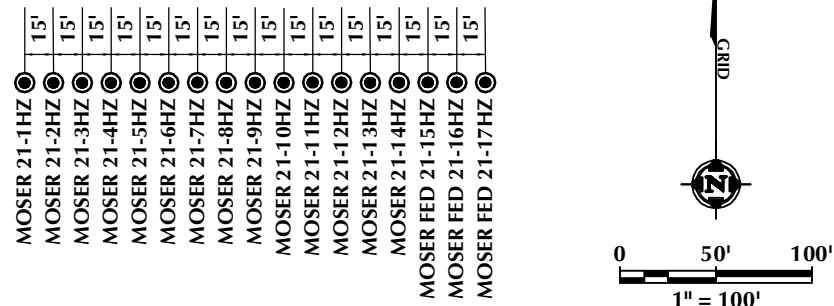
# DIRECTIONAL WELL PLAT (COGCC) / MULTI-WELL PLAN (OGED) SECTIONS 4, 9, 16, 17, 20, 21 & 29, T3N, R65W

**WELL NOTES:**

- MOSER 21-1HZ  
SURFACE HOLE LOCATION: 442' FNL, 1575' FWL (SEC. 21)  
HEEL LOCATION: 2488' FSL, 1969' FEL (SEC. 17)  
BOTTOM HOLE LOCATION: 75' FNL, 2112' FEL (SEC.29)
- MOSER 21-2HZ  
SURFACE HOLE LOCATION: 442' FNL, 1590' FWL (SEC. 21)  
HEEL LOCATION: 2161' FSL, 1179' FEL (SEC. 17)  
BOTTOM HOLE LOCATION: 175' FNL, 1129' FEL (SEC. 29)
- MOSER 21-3HZ  
SURFACE HOLE LOCATION: 442' FNL, 1605' FWL (SEC. 21)  
HEEL LOCATION: 2323' FSL, 392' FEL (SEC. 17)  
BOTTOM HOLE LOCATION: 175' FNL, 402' FEL (SEC. 29)
- MOSER 21-4HZ  
SURFACE HOLE LOCATION: 442' FNL, 1620' FWL (SEC. 21)  
HEEL LOCATION: 185' FSL, 212' FWL (SEC. 16)  
BOTTOM HOLE LOCATION: 191' FNL, 208' FWL (SEC. 4)
- MOSER 21-5HZ  
SURFACE HOLE LOCATION: 442' FNL, 1635' FWL (SEC. 21)  
HEEL LOCATION: 190' FSL, 533' FWL (SEC. 16)  
BOTTOM HOLE LOCATION: 190' FNL, 578' FWL (SEC. 4)
- MOSER 21-6HZ  
SURFACE HOLE LOCATION: 442' FNL, 1650' FWL (SEC. 21)  
HEEL LOCATION: 190' FSL, 903' FWL (SEC. 16)  
BOTTOM HOLE LOCATION: 190' FNL, 948' FWL (SEC. 4)
- MOSER 21-7HZ  
SURFACE HOLE LOCATION: 443' FNL, 1665' FWL (SEC. 21)  
HEEL LOCATION: 190' FSL, 1321' FWL (SEC. 16)  
BOTTOM HOLE LOCATION: 190' FNL, 1318' FWL (SEC. 4)
- MOSER 21-8HZ  
SURFACE HOLE LOCATION: 443' FNL, 1680' FWL (SEC. 21)  
HEEL LOCATION: 190' FSL, 1644' FWL (SEC. 16)  
BOTTOM HOLE LOCATION: 190' FNL, 1688' FWL (SEC. 4)
- MOSER 21-9HZ  
SURFACE HOLE LOCATION: 443' FNL, 1695' FWL (SEC. 21)  
HEEL LOCATION: 189' FSL, 2143' FWL (SEC. 16)  
BOTTOM HOLE LOCATION: 190' FNL, 2058' FWL (SEC. 4)

- MOSER 21-10HZ  
SURFACE HOLE LOCATION: 443' FNL, 1710' FWL (SEC. 21)  
HEEL LOCATION: 191' FSL, 2439' FWL (SEC. 16)  
BOTTOM HOLE LOCATION: 190' FNL, 2428' FWL (SEC. 4)
- MOSER 21-11HZ  
SURFACE HOLE LOCATION: 443' FNL, 1725' FWL (SEC. 21)  
HEEL LOCATION: 272' FSL, 2409' FEL (SEC. 16)  
BOTTOM HOLE LOCATION: 280' FNL, 2460' FEL (SEC. 4)
- MOSER 21-12HZ  
SURFACE HOLE LOCATION: 443' FNL, 1740' FWL (SEC. 21)  
HEEL LOCATION: 189' FSL, 2051' FEL (SEC. 16)  
BOTTOM HOLE LOCATION: 190' FNL, 2089' FEL (SEC. 4)
- MOSER 21-13HZ  
SURFACE HOLE LOCATION: 443' FNL, 1755' FWL (SEC. 21)  
HEEL LOCATION: 190' FSL, 1643' FEL (SEC. 16)  
BOTTOM HOLE LOCATION: 190' FNL, 1719' FEL (SEC. 4)
- MOSER 21-14HZ  
SURFACE HOLE LOCATION: 444' FNL, 1770' FWL (SEC. 21)  
HEEL LOCATION: 187' FSL, 1313' FEL (SEC. 16)  
BOTTOM HOLE LOCATION: 190' FNL, 1349' FEL (SEC. 4)
- MOSER FED 21-15HZ  
SURFACE HOLE LOCATION: 444' FNL, 1785' FWL (SEC. 21)  
HEEL LOCATION: 187' FSL, 959' FEL (SEC. 16)  
BOTTOM HOLE LOCATION: 190' FNL, 979' FEL (SEC. 4)
- MOSER FED 21-16HZ  
SURFACE HOLE LOCATION: 444' FNL, 1800' FWL (SEC. 21)  
HEEL LOCATION: 279' FSL, 577' FEL (SEC. 16)  
BOTTOM HOLE LOCATION: 280' FNL, 609' FEL (SEC. 4)
- MOSER FED 21-17HZ  
SURFACE HOLE LOCATION: 444' FNL, 1815' FWL (SEC. 21)  
HEEL LOCATION: 190' FSL, 216' FEL (SEC. 16)  
BOTTOM HOLE LOCATION: 190' FNL, 245' FEL (SEC. 4)

## WELL HEAD SPACING DETAIL



### WELL PAD - MOSER FED 3-21HZ

**DIRECTIONAL WELL PLAT (COGCC) / MULTI-WELL PLAN (OGED)**  
 MOSER 21-1HZ, MOSER 21-2HZ, MOSER 21-3HZ,  
 MOSER 21-4HZ, MOSER 21-5HZ, MOSER 21-6HZ,  
 MOSER 21-7HZ, MOSER 21-8HZ, MOSER 21-9HZ,  
 MOSER 21-10HZ, MOSER 21-11HZ, MOSER 21-12HZ,  
 MOSER 21-13HZ, MOSER 21-14HZ, MOSER FED 21-15HZ,  
 MOSER FED 21-16HZ & MOSER FED 21-17HZ  
 LOCATED IN SECTIONS 4, 9, 16, 17, 20, 21 & 29  
 T3N, R65W, 6TH P.M.  
 WELD COUNTY, COLORADO

LOVELAND OFFICE  
6706 North Franklin Avenue  
Loveland, Colorado 80538  
Phone 970-776-4331

SHERIDAN OFFICE  
1095 Saberton Avenue  
Sheridan, Wyoming 82801  
Phone 307-674-0609

**Kerr-McGee Oil &  
Gas Onshore LP**

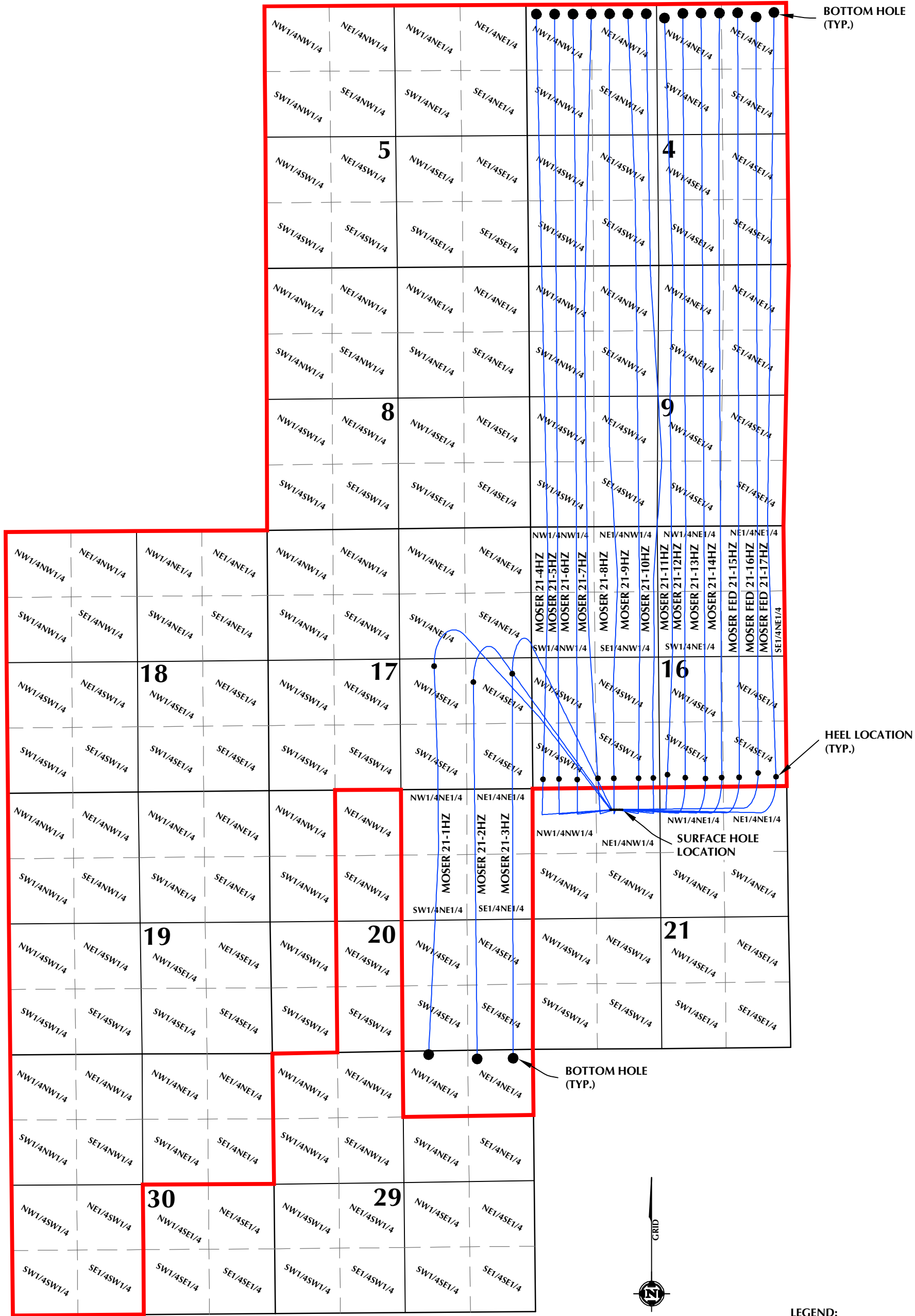
1099 18th Street  
Denver, Colorado 80202

DRAFTED BY:	AMK	CHECKED BY:	RKF
DATE DRAFTED:	6/3/22	DATE SURVEYED:	3/3/22
REVISED:		FILE NAME:	21-48

**SHEET NO:  
1B  
1B OF 1**

K:\AMDRK\2021\2021\_48\_MOSER\_T3N\_R65W\_SEC\_21\PLATS\MOSER\_SEC\_21.dwg, 6/3/2022 7:04:58 AM, steven

# DIRECTIONAL WELL PLAT (COGCC) / MULTI-WELL PLAN (OGED) SECTIONS 4, 5, 8, 9, 16, 17, 18, 19, 20, 21, 29 & 30, T3N, R65W



### WELL PAD - MOSER FED 3-21HZ

DIRECTIONAL WELL PLAT (COGCC) / MULTI-WELL PLAN (OGED)  
 MOSER 21-1HZ, MOSER 21-2HZ, MOSER 21-3HZ,  
 MOSER 21-4HZ, MOSER 21-5HZ, MOSER 21-6HZ,  
 MOSER 21-7HZ, MOSER 21-8HZ, MOSER 21-9HZ,  
 MOSER 21-10HZ, MOSER 21-11HZ, MOSER 21-12HZ,  
 MOSER 21-13HZ, MOSER 21-14HZ, MOSER FED 21-15HZ,  
 MOSER FED 21-16HZ, MOSER FED 21-17HZ,  
 LOCATED IN SECTIONS 4, 5, 8, 9, 16, 17, 18, 19, 20, 21, 29 & 30  
 T3N, R65W, 6TH P.M.  
 WELD COUNTY, COLORADO

**Kerr-McGee Oil &  
Gas Onshore LP**  
 1099 18th Street  
 Denver, Colorado 80202



**CONSULTING, LLC**

SHERIDAN OFFICE      LOVELAND OFFICE  
 1095 Saberton Avenue      6706 North Franklin Avenue  
 Sheridan, Wyoming 82801      Loveland, Colorado 80538  
 Phone 307-674-0609      Phone 970-776-4331

DRAFTED BY:	AMK	CHECKED BY:	RKF	<b>SHEET NO: 1C 1C OF 1</b>
DATE DRAFTED:	6/3/22	DATE SURVEYED:	3/3/22	
REVISED:		FILE NAME:	21-48	

K:\AMARCO\2021\2021\_48\_MOSER\_T3N\_R65W\_SEC\_21\PLATS\MOSER\_SEC\_21\_SU.dwg 6/3/22 7:08:37 AM 9/6/21