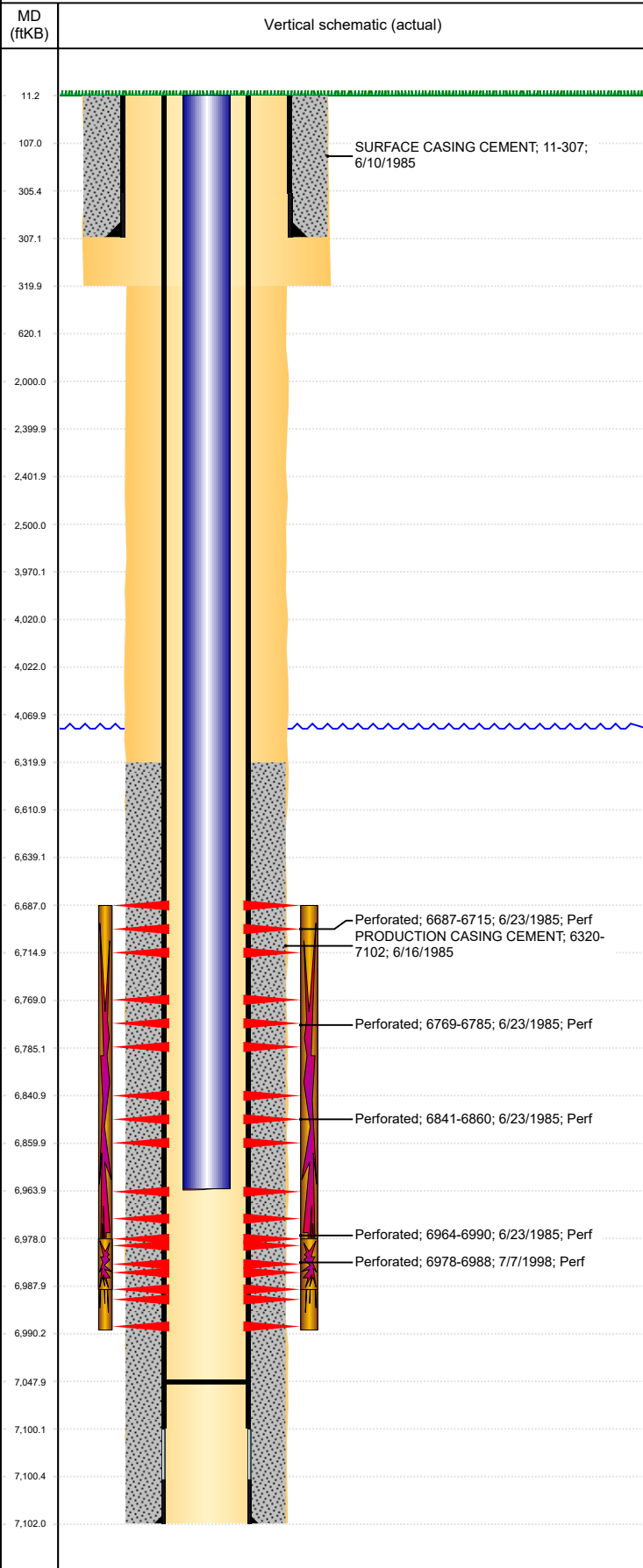




# P&A Wellbore For State

Well Name: HARLESS 17-02

Land, Original Hole, 8/17/2022 2:00:09 PM



Well Header									
Surface UWI 0512312467		Business Unit Rockies		Gov Auth Dist		Prod Tree Loc Land			
Orig. KB to Gnd (ft) 11.00		Original Spud Date 6/10/1985		Abandon Date		Well Sub-Status SI		High...	
Comment DISCREPANCY: ST RPT TD @ 7090'; DRL RPT TD 7102'; OPEN HOLE LOG TD 7102'; PROD CSG SET @ 7104'. USED 7102'									
Surface Location (Congressional)									
Qtr 3 SW	Qtr 4 NE	Section 17	Twonshp 4	Twonsh...	Range 64	Rng E/...	Latitude (°) 40.314273	Longitude (°) -104.57167	
Wellbore Sections									
Section Des		Hole Size (in)		Act Top (ftKB)		Act Btm (ftKB)			
SURFACE		12 1/4		11.0		320.0			
PRODUCTION		7 7/8		320.0		7,102.0			
Casing Strings									
Csg Des		Run Date		OD (in)		Wt/Len (lb/ft)		Grade	
Surface		6/10/1985		8 5/8		24.00		N-80	
Production Casing		6/16/1985		4 1/2		11.60		11	
Set Depth (MD) (ftKB)		Top Depth (MD) (ftKB)							
307		11							
7102		11							
Cement									
Des		Start Date		Top (ftKB)		Btm (ftKB)			
SURFACE CASING CEMENT		6/10/1985		11.0		307.0			
PRODUCTION CASING CEMENT		6/16/1985		6,320.0		7,102.0			
Zone Statuses									
Zone Name		Status Date		Status		Fluid Type		Job	
CODELL		9/22/2016		SI					
CODELL		10/25/2017		SI					
NIOBRARA		7/12/1985		PR		Water		DRILLING/COMPLETION - ORIGINAL, 6/10/1985...	
NIOBRARA		4/14/2014		PR		Water		Flowing	
NIOBRARA-CO...		4/14/2014		PR		Water		Flowing	
Perforation Data									
Linked Zone		Explosive Type		Entered Shot Total		Top (ftKB)		Btm (ftKB)	
NIOBRARA, Original Hole		A		3		6,687.0		6,715.0	
NIOBRARA, Original Hole		B		4		6,769.0		6,785.0	
NIOBRARA, Original Hole		C		3		6,841.0		6,860.0	
CODELL, Original Hole				7		6,964.0		6,990.0	
CODELL, Original Hole				40		6,978.0		6,988.0	
Date									
6/23/1985									
6/23/1985									
6/23/1985									
6/23/1985									
7/7/1998									
Stimulation Intervals									
Zone		Start Date		Top (ftKB)		Btm (ftKB)			
NIOBRARA-CODELL, Original Hole		7/3/1985		6,687.0		6,990.0			
CODELL, Original Hole		9/14/2004		6,978.0		6,988.0			
CODELL, Original Hole		7/11/1998		6,978.0		6,988.0			
Other In Hole									
Run Date		Des		Make		OD (in)		Top (ftKB)	
Logs									
Date		Type				Depth Top (MD) (ftKB)		Btm (ftKB)	
6/15/1985		COMPENSATED DENSITY				4,250		7,100.0	
6/15/1985		INDUCTION				303		7,100.0	
6/20/1985		CEMENT BOND				6,260		7,012.0	
3/23/2011		GYRO				0		6,600.0	
Plug Back Total Depths									
Date		Type		Com				PBTD (ftKB)	
6/20/1985		FILL		DEPTH LOGGER ON CBL				7,016	
9/15/2004		FILL		CLEAN OUT TO LAND TUBING				7,048	