

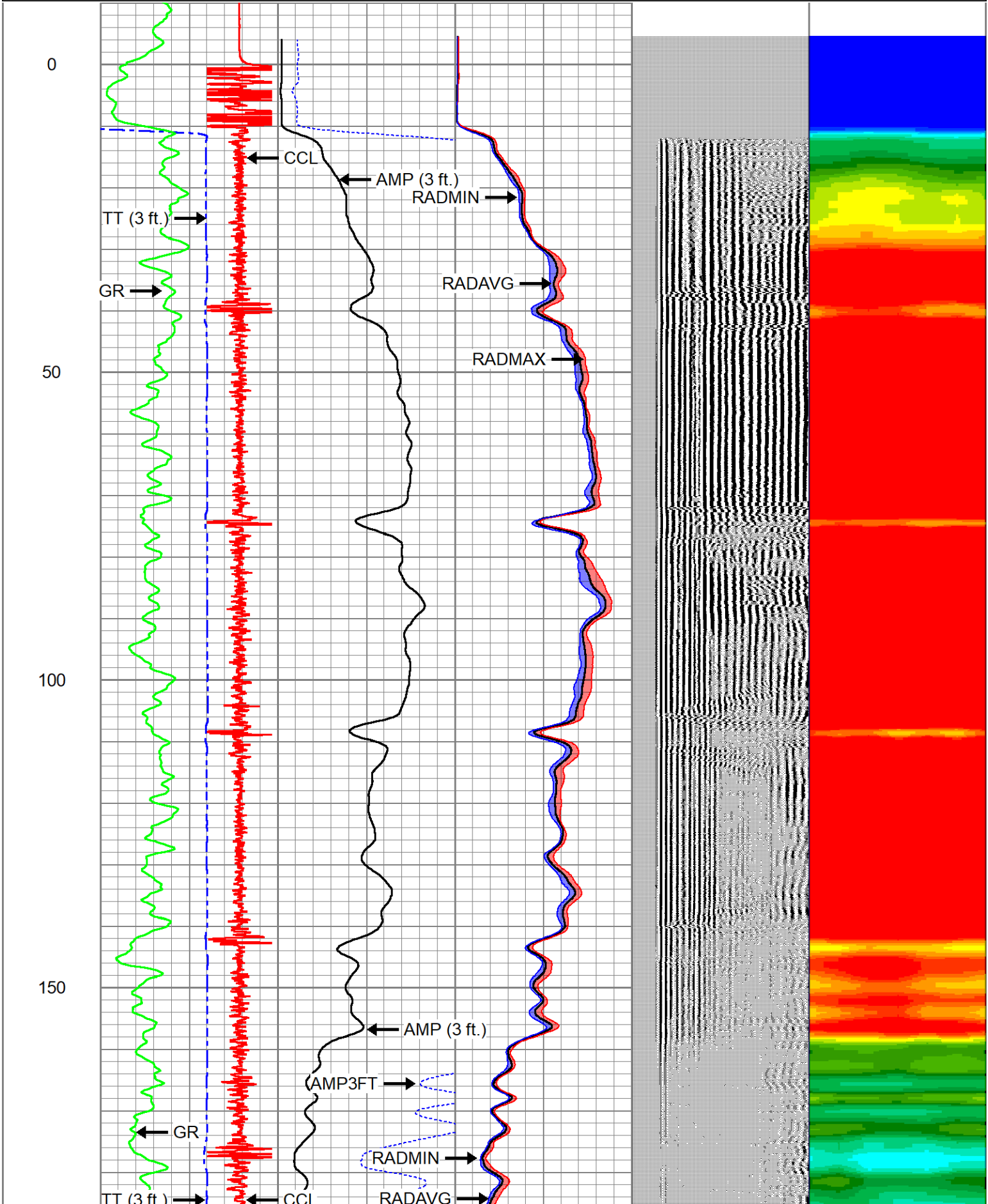
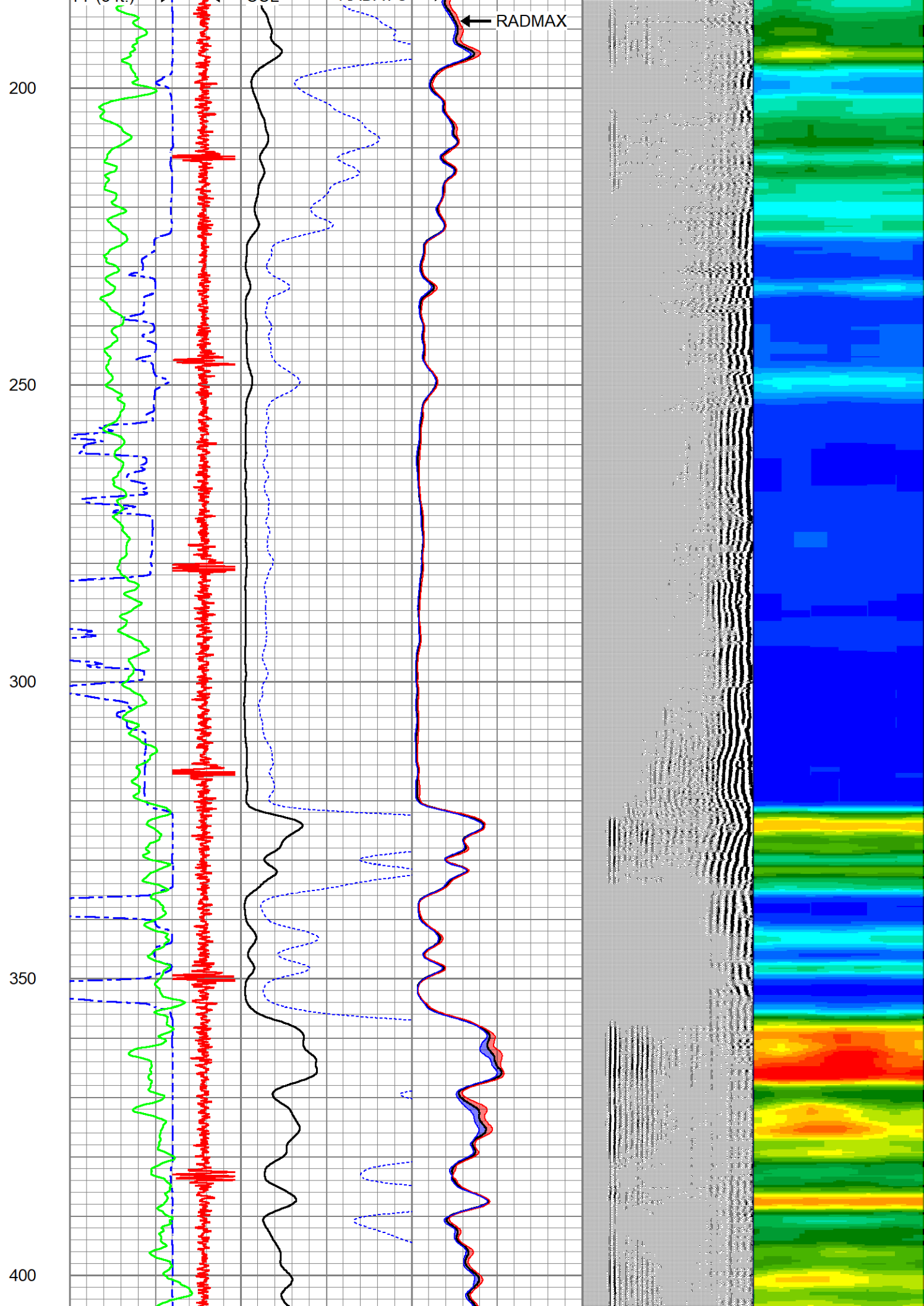


			CENT-BC275-0000 Probe 2.75" Bowspring Centralizer	2.83	2.75	24.00
CCL	0.00					
GR	0.97					
			DSS_HSR_ELE-DSS_HSR_10_ELE (HSR10 0000) DSS 1 11/16" HSR Bond tool - Electronics Module	5.99	1.69	27.50
ROTV	5.24					
TCF	5.24					
THV	5.24					
INTEMP	5.24		CENT-DSS-RAC11-MID (RAC11MID-0000) DSS 1 11/16" MID Roller Arm Centralizer	2.61	1.69	16.00
PNEG	5.24					
PPOS	5.24					
GRHV	5.24					
WVFS6	9.77					
WVFS5	9.77					
WVFS4	9.77					
WVFS3	9.77					
WVFS2	9.77					
WVFS1	9.77		DSS_HSR_SND-DSS_HSR_10_SND (HSR10 0000) DSS 1 11/16" HSR Bond tool - Sonde Module	8.26	1.69	41.50
WVFCAL	10.27					
WVF3FT	10.27					
WVF5FT	11.27					
TEMP	15.77					
WVFSYNC	16.11					
			CENT-BC275-0000 Probe 2.75" Bowspring Centralizer	2.83	2.75	24.00
Dataset: chevron-ocoma ii 31-15.db: field/OCOMA_II_31-15/RADIAL_BOND_LOG/RBL_M.4 Total length: 23.55 ft Total weight: 136.31 lb O.D.: 2.75 in						

Database File	chevron-ocoma ii 31-15.db
Dataset Pathname	OCOMA_II_31-15/RADIAL_BOND_LOG/RBL_M.4
Presentation Format	ranger_dss_radial
Dataset Creation	Tue Aug 16 18:55:25 2022
Charted by	Depth in Feet scaled 1:240

Charted by		Depth in Feet scaled 1:240										
TT (3 ft.)		AMP (3 ft.)		0	RADAVG	100	VDL (5 ft.)		1	RADIAL MAP		6
350	(usec)	120	0	(mV)	100	0	RADMAX	100	200	(usec)	1200	
-20000	CCL	20000	0	AMP3FT (mV)	20	0	RADMIN	100				
0	GR (GAPI)	150										





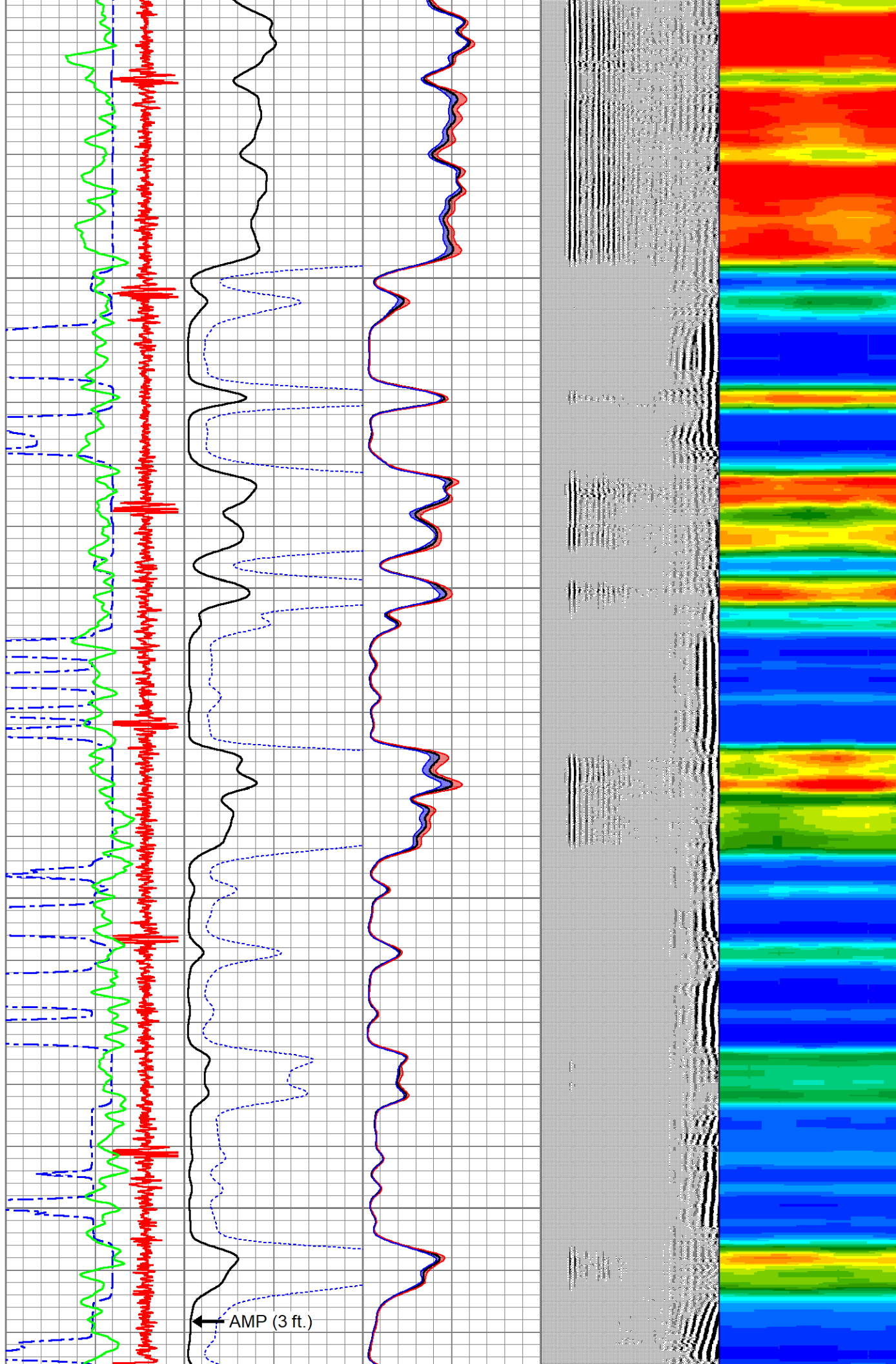
450

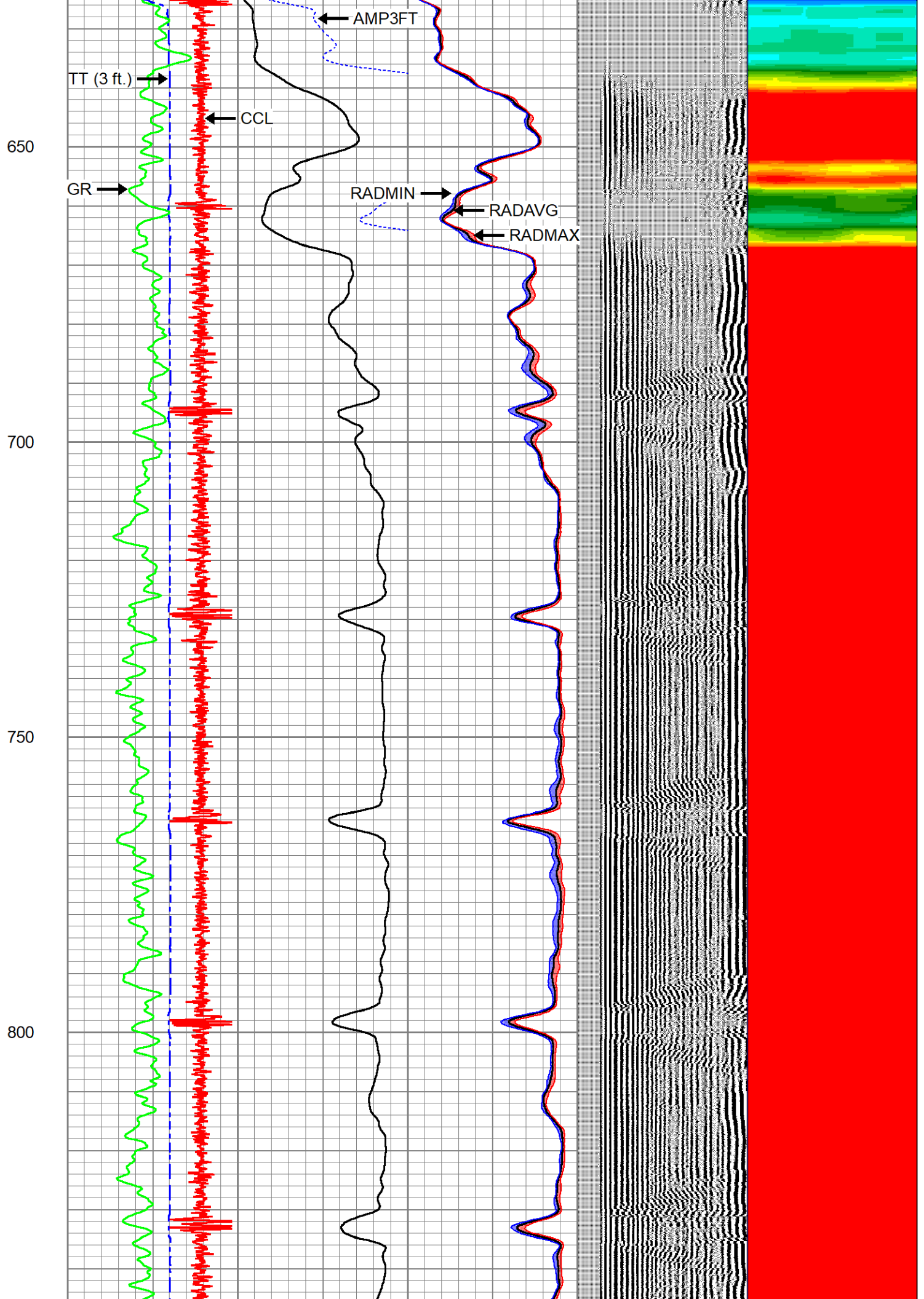
500

550

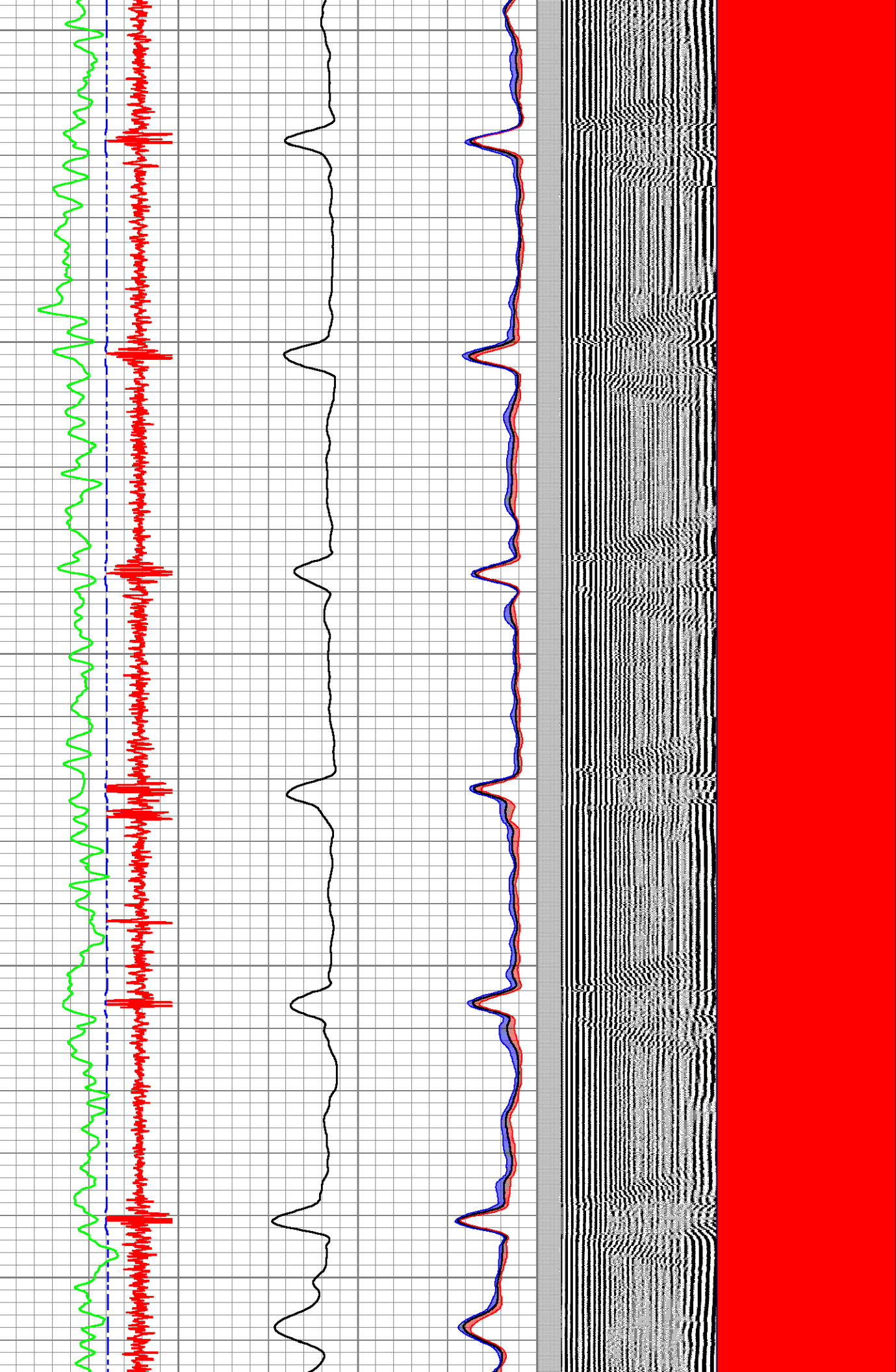
600

AMP (3 ft.)





850
900
950
1000
1050

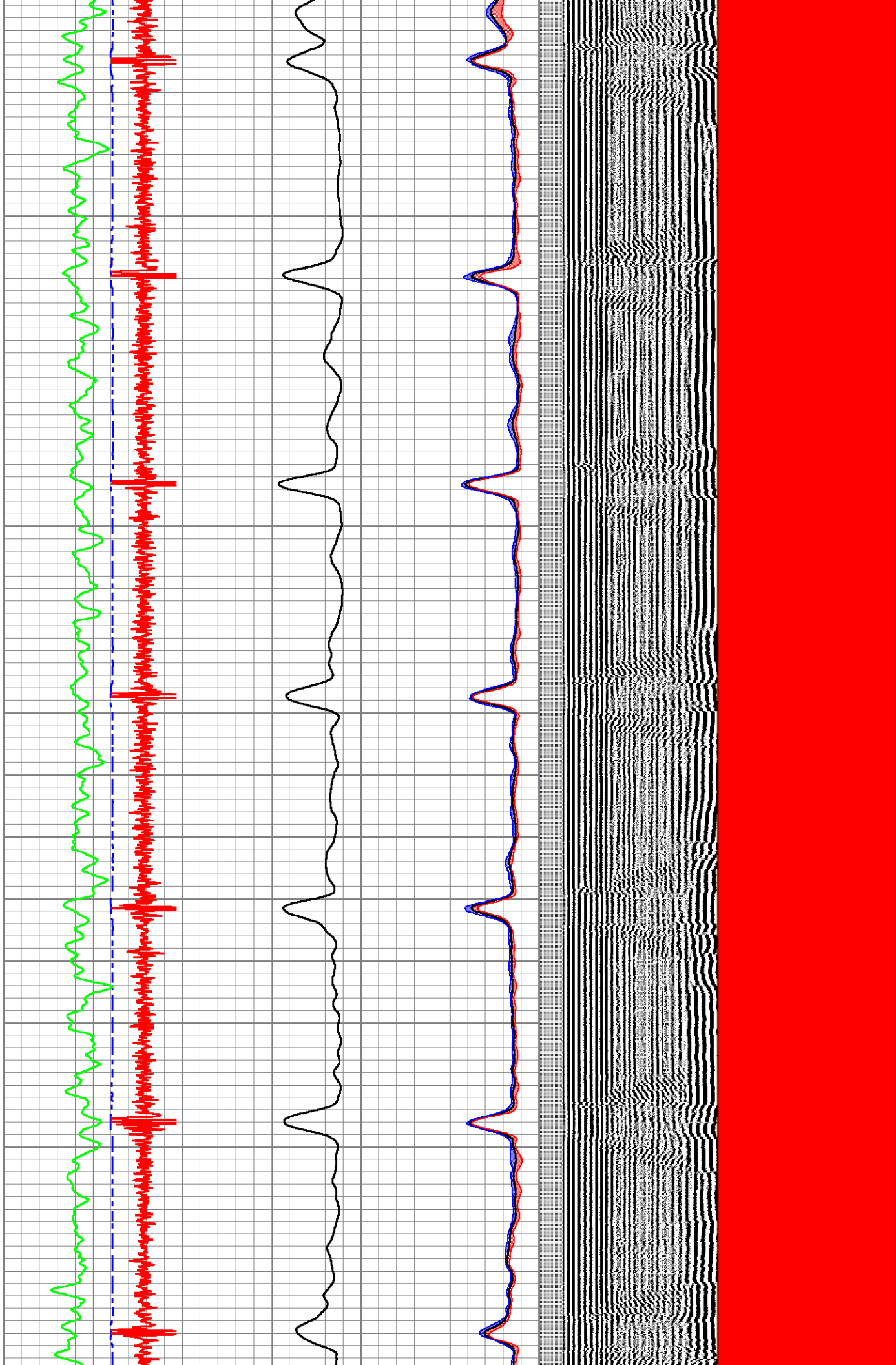


1100

1150

1200

1250



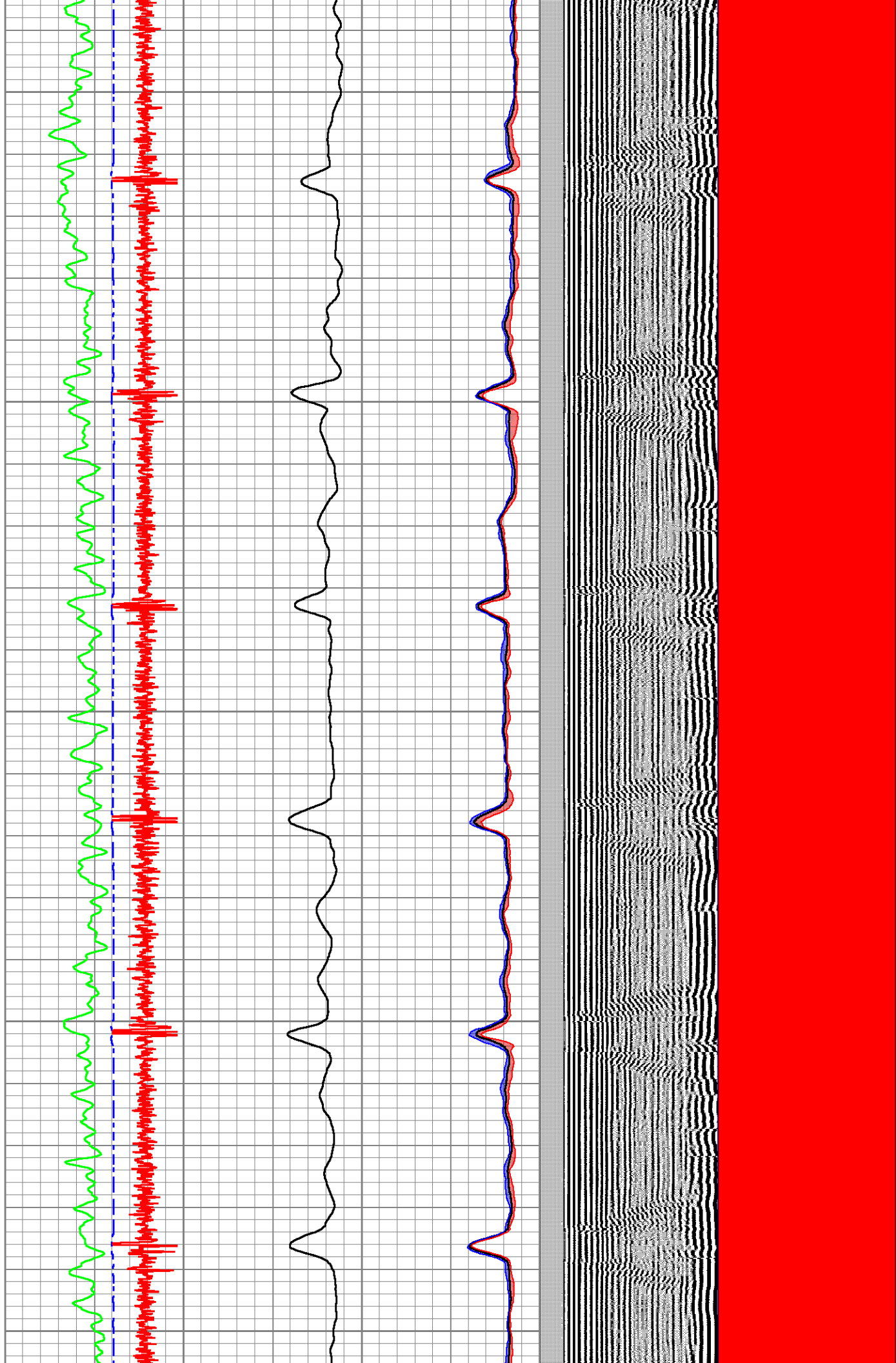
1300

1350

1400

1450

1500

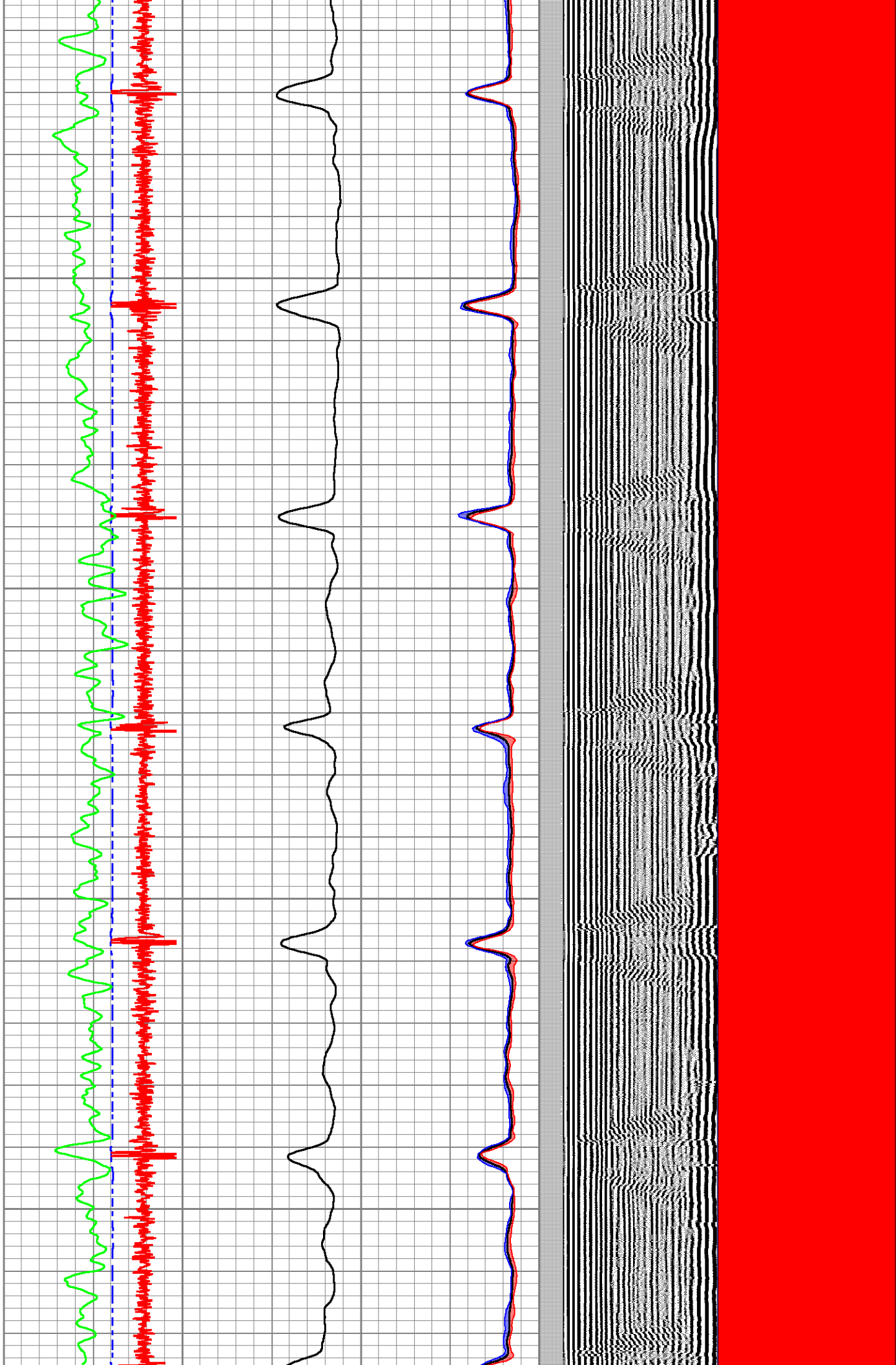


1550

1600

1650

1700

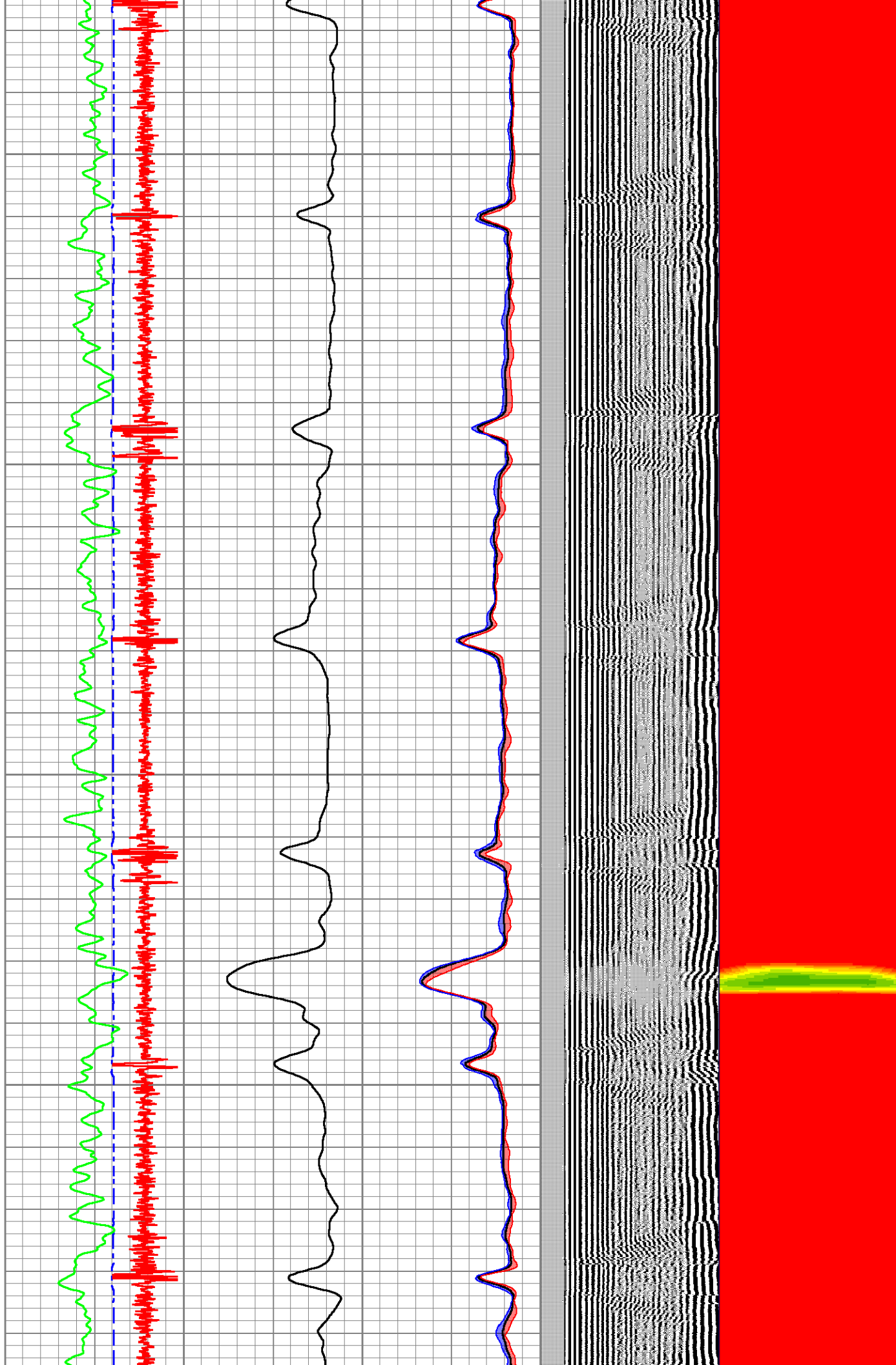


1750

1800

1850

1900



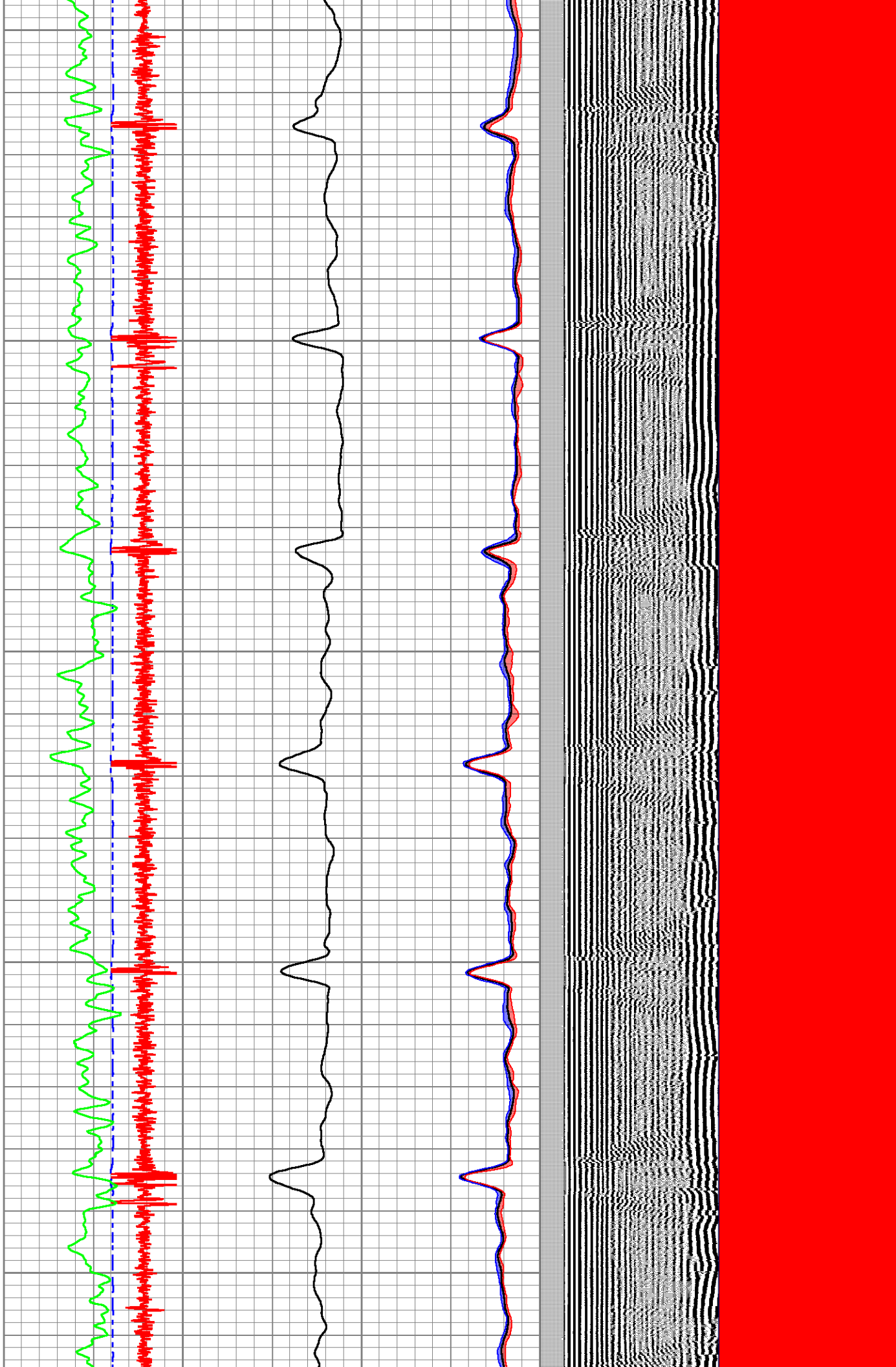
1950

2000

2050

2100

2150

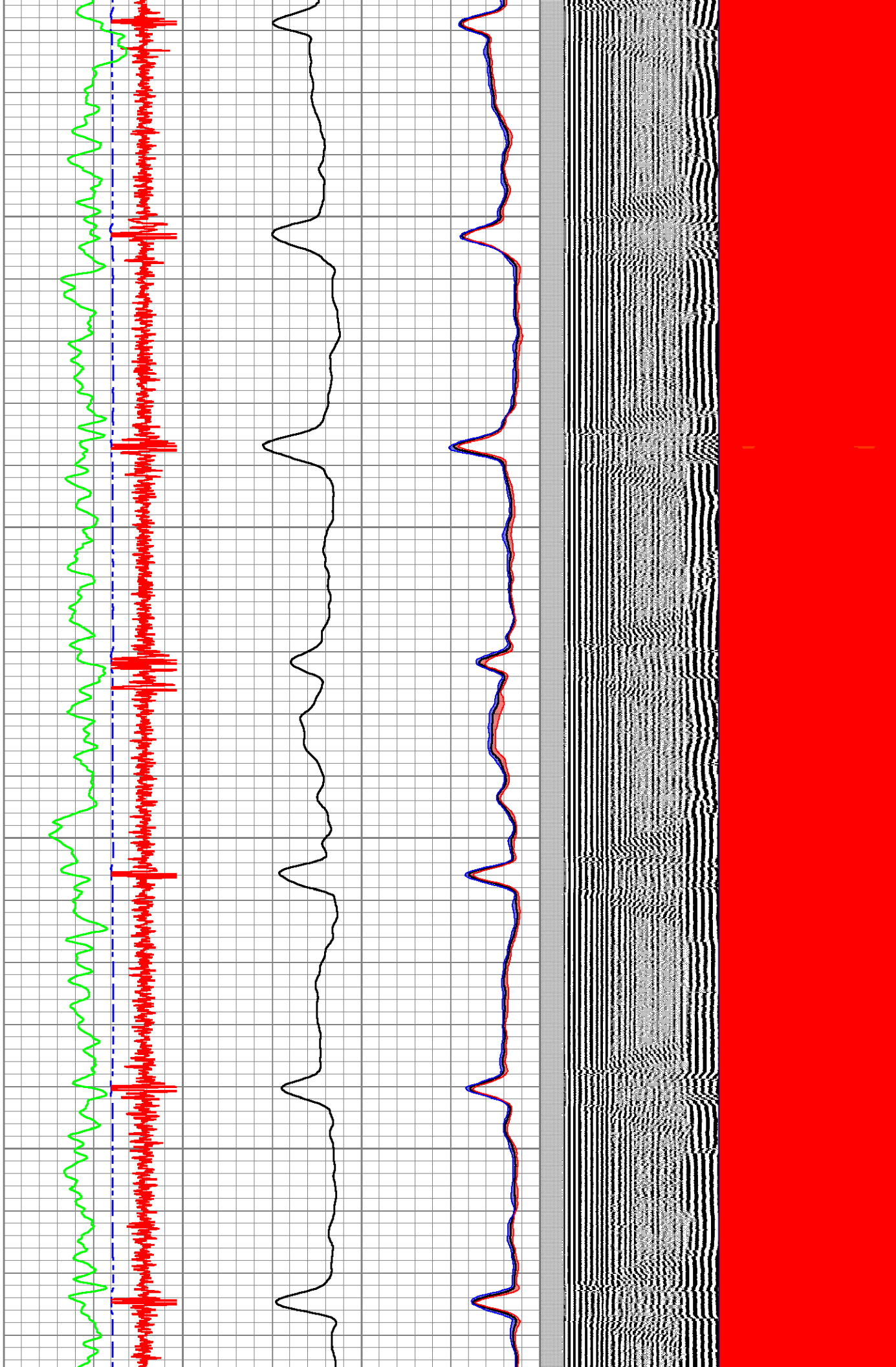


2200

2250

2300

2350



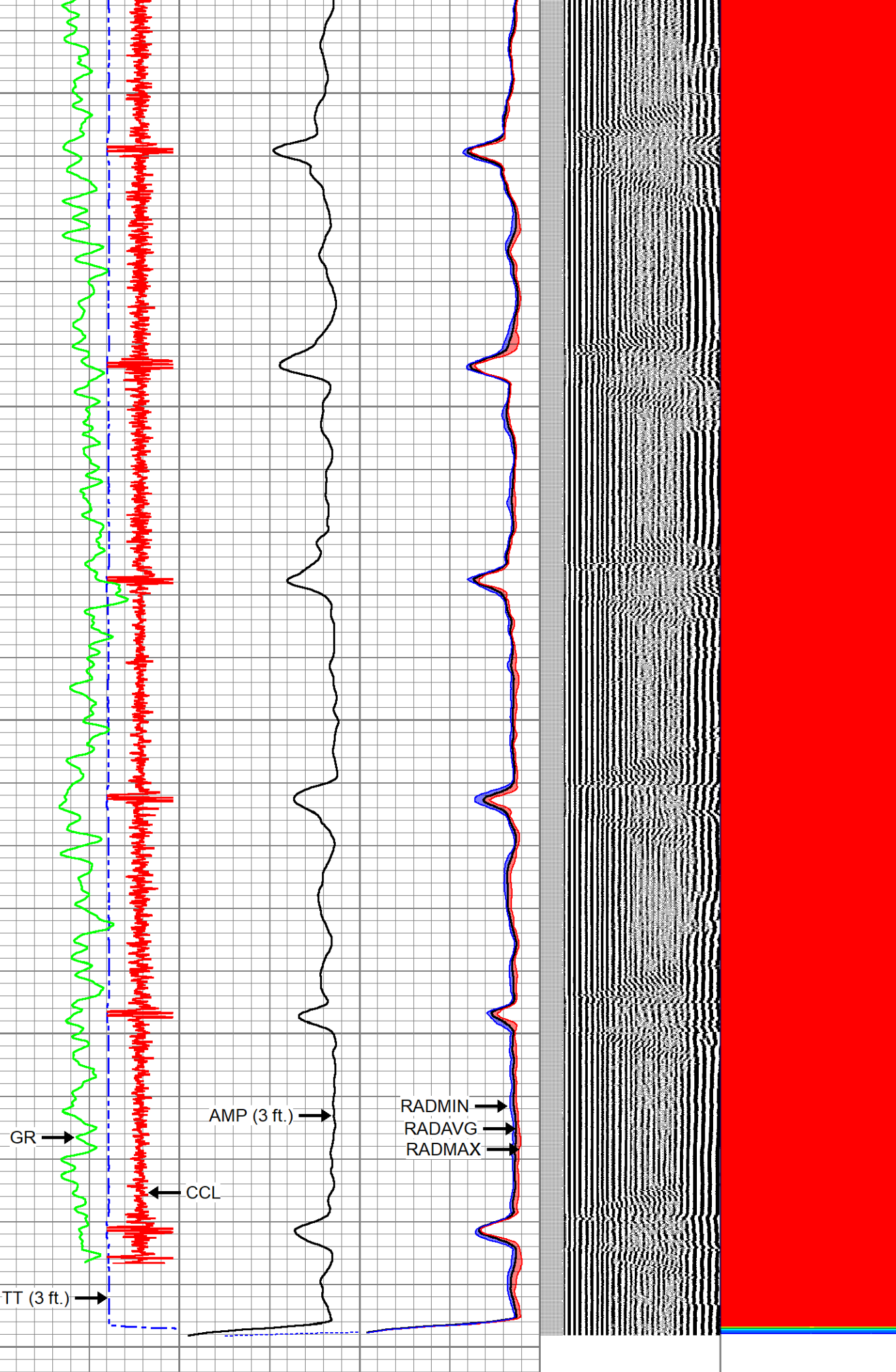
2400



2450


2500

2550

2600



TT (3 ft.)			AMP (3 ft.)			0	RADAVG	100	VDL (5 ft.)			1	RADIAL MAP	6
350	(usec)	120	0	(mV)	100	0	RADMAX	100	200	(usec)	1200	4		50
-20000	CCL	20000	0	AMP3FT (mV)	20	0	RADMIN	100						
0	GR (GAPI)	150												

	Company	CHEVRON	
	Well	OCOMA II C 31-15	
	Field	WATTENBERG - 90750	
	County	WELD	
	State	COLORADO	
			Country U.S.A.