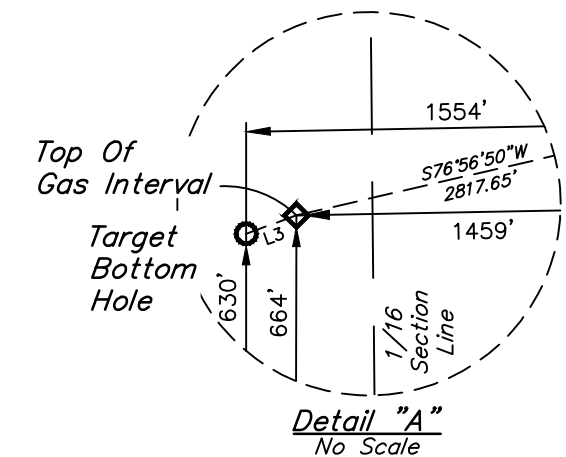
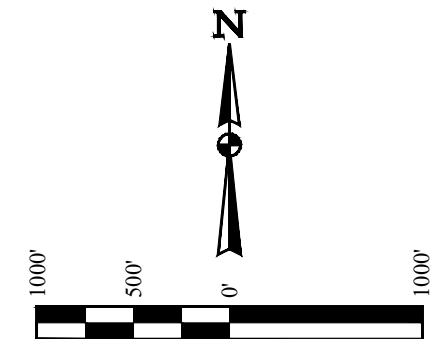


Caerus Oil & Gas LLC
BJU M23A FED 25C-22 496
SW 1/4 SW 1/4, SECTION 23, T4S, R96W, 6th P.M.
GARFIELD COUNTY, COLORADO

BEARINGS ARE BASED ON THE ASSUMPTION THAT THE WEST
LINE OF THE NORTHWEST 1/4 OF SECTION 23
BEARS N00°46'39"W. MONUMENTS DESCRIBED HEREON.

BENCH MARK (H79) LOCATED IN THE NE 1/4 OF SECTION 35, T4S, R98W, 6th P.M., TAKEN FROM THE BULL FORK QUADRANGLE, COLORADO, 7.5 MINUTE SERIES. (TOPOGRAPHIC MAP) PUBLISHED BY THE UNITED STATES DEPARTMENT OF THE INTERIOR, GEOLOGICAL SURVEY. SAID ELEVATION IS MARKED AS BEING 8535 FEET.



PDOP = 1.4

LEGEND:

- = PROPOSED WELLHEAD.
- ◆ = TOP OF GAS INTERVAL.
- = TARGET BOTTOM HOLE.
- ▲ = SECTION CORNERS LOCATED. (NAD 83)
- △ = SECTION CORNERS RE-ESTABLISHED.
(Not Set on Ground.) (NAD 83)

NAD 83 (SURFACE LOCATION)	NAD 83 (TOP OF GAS INTERVAL)	NAD 83 (TARGET BOTTOM HOLE)
LATITUDE = 39°41'02.83" (39.684121°)	LATITUDE = 39°40'56.61" (39.682392°)	LATITUDE = 39°40'56.28" (39.682299°)
LONGITUDE = 108°08'26.97" (108.140825°)	LONGITUDE = 108°09'02.08" (108.150579°)	LONGITUDE = 108°09'03.29" (108.150913°)
NAD 27 (SURFACE LOCATION)	NAD 27 (TOP OF GAS INTERVAL)	NAD 27 (TARGET BOTTOM HOLE)
LATITUDE = 39°41'02.92" (39.684145°)	LATITUDE = 39°40'56.70" (39.682417°)	LATITUDE = 39°40'56.36" (39.682324°)
LONGITUDE = 108°08'24.68" (108.140189°)	LONGITUDE = 108°08'59.79" (108.149943°)	LONGITUDE = 108°09'01.00" (108.150277°)
UTM NAD 27 (ZONE 12)	UTM NAD 27 (ZONE 12)	UTM NAD 27 (ZONE 12)
N: 14423863.06' E: 2445070.49'	N: 14423146.15' E: 2442345.82'	N: 14423109.20' E: 2442252.98'



UINTAH
ENGINEERING & LAND SURVEYING

UELS, LLC
Corporate Office * 85 South 200 East
Vernal, UT 84078 * (435) 789-1017

SURVEYED BY	DAYTON SLAUGH, B.H.	05-27-20	SCALE
DRAWN BY	T.L.L.	06-11-20	1" = 1000'

WELL LOCATION PLAT