

Project: Garfield County, CO  
Site: BJU M23A 496 Pad  
Well: BJU M23A FED 25B-22 496  
Wellbore: Wellbore #1  
Design: Design #2  
Latitude: 39.683979  
Longitude: -108.140248  
Ground Level: 8104.0  
RKB @ 8134.0usft (30')

PROJECT DETAILS: Garfield County, CO  
Geodetic System: Universal Transverse Mercator (US Survey Feet)  
Datum: NAD 1927 - Western US  
Ellipsoid: Clarke 1866  
Zone: Zone 12N (114 W to 108 W)  
System Datum: Mean Sea Level

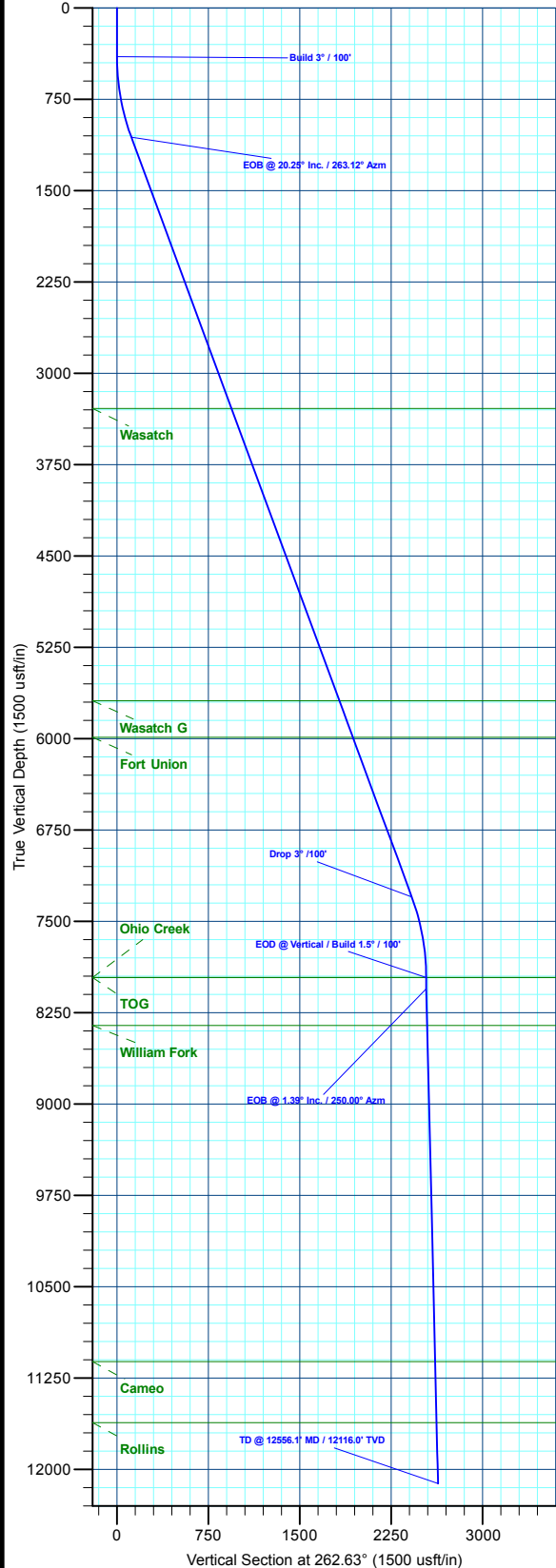
REFERENCE INFORMATION  
Vertical (TVD) Reference: RKB @ 8134.0usft (30')  
Section (VS) Reference: Slot - 25B-22(0.0N, 0.0E)  
Measured Depth Reference: RKB @ 8134.0usft (30')  
Calculation Method: Minimum Curvature

FORMATION TOP DETAILS		
TVDPath	MDPath	Formation
3288.0	3448.7	Wasatch
5688.0	6006.8	Wasatch G
5988.0	6326.5	Fort Union
7961.0	8399.9	Ohio Creek
7961.0	8399.9	TOG
8356.0	8795.0	William Fork
11116.0	11555.8	Cameo
11616.0	12056.0	Rollins

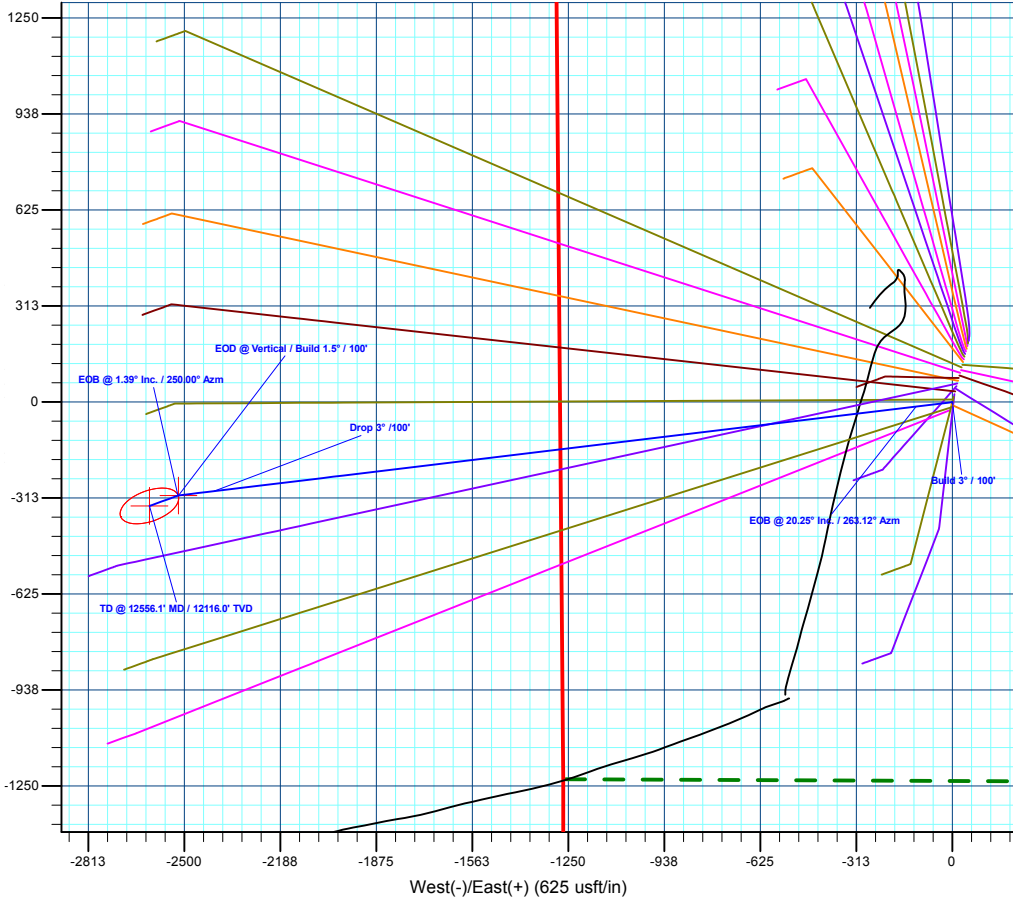
SECTION DETAILS									
MD	Inc	Azi	TVD	+N/-S	+E/-W	Dieg	TFace	VSect	Annotation
0.0	0.00	0.00	0.0	0.0	0.0	0.00	0.00	0.0	
400.0	0.00	0.00	400.0	0.0	0.0	0.00	0.00	0.0	Build 3° / 100'
1075.0	20.25	263.12	1061.0	-14.1	-117.2	3.00	263.12	118.0	EOB @ 20.25° Inc. / 263.12° Azm
7724.9	20.25	263.12	7300.0	-289.7	-2402.2	0.00	0.00	2419.5	Drop 3° / 100'
8399.9	0.00	0.00	7961.0	-303.8	-2519.3	3.00	180.00	2537.5	EOD @ Vertical / Build 1.5° / 100'
8492.9	1.39	250.00	8053.9	-304.2	-2520.4	1.50	250.00	2538.6	EOB @ 1.39° Inc. / 250.00° Azm
12556.1	1.39	250.00	12116.0	-338.0	-2613.3	0.00	0.00	2635.1	TD @ 12556.1° MD / 12116.0° TVD

DESIGN TARGET DETAILS						
Name	TVD	+N/-S	+E/-W	Northing	Easting	Latitude
OHCR - 25B-22	7961.0	-303.8	-2519.3	14423417.78	2442547.63	39.683144
PBHL - 25B-22	12116.0	-338.0	-2613.3	14423380.60	2442454.80	39.683050

WELL DETAILS: BJU M23A FED 25B-22 496						
				Ground Level : 8104.0		
				Northing	Easting	Latitude
				14423801.80	2445056.00	39.683979
						Longitude
						-108.140248
						25B-22



Compass rose showing True North (T) and Magnetic North (M).  
Azimuths to True North: Magnetic North: 9.43°  
Magnetic Field Strength: 51187.3nT  
Dip Angle: 65.82°  
Date: 6/3/2020  
Model: HDGM2020





## **Caerus Oil & Gas**

**Garfield County, CO**

**BJU M23A 496 Pad**

**BJU M23A FED 25B-22 496 - Slot 25B-22**

**Wellbore #1**

**Plan: Design #2**

## **KLX Well Planning Report**

**18 July, 2022**



<b>Database:</b>	EDM 5000.1 Single User Db	<b>Local Co-ordinate Reference:</b>	Well BJU M23A FED 25B-22 496 - Slot 25B-22
<b>Company:</b>	Caerus Oil & Gas	<b>TVD Reference:</b>	RKB @ 8134.0usft (30')
<b>Project:</b>	Garfield County, CO	<b>MD Reference:</b>	RKB @ 8134.0usft (30')
<b>Site:</b>	BJU M23A 496 Pad	<b>North Reference:</b>	True
<b>Well:</b>	BJU M23A FED 25B-22 496	<b>Survey Calculation Method:</b>	Minimum Curvature
<b>Wellbore:</b>	Wellbore #1		
<b>Design:</b>	Design #2		

<b>Project</b>	Garfield County, CO		
<b>Map System:</b>	Universal Transverse Mercator (US Survey Fee	<b>System Datum:</b>	Mean Sea Level
<b>Geo Datum:</b>	NAD 1927 - Western US		
<b>Map Zone:</b>	Zone 12N (114 W to 108 W)		

<b>Site</b>	BJU M23A 496 Pad		
<b>Site Position:</b>		<b>Northing:</b>	14,424,028.50 usft
<b>From:</b>	Map	<b>Easting:</b>	2,445,109.60 usft
<b>Position Uncertainty:</b>	0.0 usft	<b>Slot Radius:</b>	13-3/16 "
		<b>Latitude:</b>	39.684596
		<b>Longitude:</b>	-108.140032
		<b>Grid Convergence:</b>	1.83 °

<b>Well</b>	BJU M23A FED 25B-22 496 - Slot 25B-22		
<b>Well Position</b>	<b>+N/-S</b>	-224.9 usft	<b>Northing:</b> 14,423,801.80 usft
	<b>+E/-W</b>	-60.8 usft	<b>Easting:</b> 2,445,056.00 usft
<b>Position Uncertainty</b>	0.0 usft	<b>Wellhead Elevation:</b>	<b>Latitude:</b> 39.683979
			<b>Longitude:</b> -108.140248
			<b>Ground Level:</b> 8,104.0 usft

<b>Wellbore</b>	Wellbore #1				
<b>Magnetics</b>	<b>Model Name</b>	<b>Sample Date</b>	<b>Declination (°)</b>	<b>Dip Angle (°)</b>	<b>Field Strength (nT)</b>
	HDGM2020	6/3/2020	9.43	65.82	51,187.30000000

<b>Design</b>	Design #2				
<b>Audit Notes:</b>					
<b>Version:</b>	<b>Phase:</b>	PLAN	<b>Tie On Depth:</b>	0.0	
<b>Vertical Section:</b>	<b>Depth From (TVD) (usft)</b>	<b>+N/-S (usft)</b>	<b>+E/-W (usft)</b>	<b>Direction (°)</b>	
	0.0	0.0	0.0	262.63	

<b>Plan Sections</b>										
<b>Measured Depth (usft)</b>	<b>Inclination (°)</b>	<b>Azimuth (°)</b>	<b>Vertical Depth (usft)</b>	<b>+N/-S (usft)</b>	<b>+E/-W (usft)</b>	<b>Dogleg Rate (°/100usft)</b>	<b>Build Rate (°/100usft)</b>	<b>Turn Rate (°/100usft)</b>	<b>TFO (°)</b>	<b>Target</b>
0.0	0.00	0.00	0.0	0.0	0.0	0.00	0.00	0.00	0.00	
400.0	0.00	0.00	400.0	0.0	0.0	0.00	0.00	0.00	0.00	
1,075.0	20.25	263.12	1,061.0	-14.1	-117.2	3.00	3.00	0.00	263.12	
7,724.9	20.25	263.12	7,300.0	-289.7	-2,402.2	0.00	0.00	0.00	0.00	
8,399.9	0.00	0.00	7,961.0	-303.8	-2,519.3	3.00	-3.00	0.00	180.00	OHCR - 25B-22
8,492.9	1.39	250.00	8,053.9	-304.2	-2,520.4	1.50	1.50	-118.34	250.00	
12,556.1	1.39	250.00	12,116.0	-338.0	-2,613.3	0.00	0.00	0.00	0.00	PBHL - 25B-22

<b>Database:</b>	EDM 5000.1 Single User Db	<b>Local Co-ordinate Reference:</b>	Well BJU M23A FED 25B-22 496 - Slot 25B-22
<b>Company:</b>	Caerus Oil & Gas	<b>TVD Reference:</b>	RKB @ 8134.0usft (30')
<b>Project:</b>	Garfield County, CO	<b>MD Reference:</b>	RKB @ 8134.0usft (30')
<b>Site:</b>	BJU M23A 496 Pad	<b>North Reference:</b>	True
<b>Well:</b>	BJU M23A FED 25B-22 496	<b>Survey Calculation Method:</b>	Minimum Curvature
<b>Wellbore:</b>	Wellbore #1		
<b>Design:</b>	Design #2		

Planned Survey									
Measured Depth (usft)	Inclination (°)	Azimuth (°)	Vertical Depth (usft)	+N/-S (usft)	+E/-W (usft)	Vertical Section (usft)	Dogleg Rate (°/100usft)	Build Rate (°/100usft)	Turn Rate (°/100usft)
0.0	0.00	0.00	0.0	0.0	0.0	0.0	0.00	0.00	0.00
100.0	0.00	0.00	100.0	0.0	0.0	0.0	0.00	0.00	0.00
200.0	0.00	0.00	200.0	0.0	0.0	0.0	0.00	0.00	0.00
300.0	0.00	0.00	300.0	0.0	0.0	0.0	0.00	0.00	0.00
<b>Build 3° / 100'</b>									
400.0	0.00	0.00	400.0	0.0	0.0	0.0	0.00	0.00	0.00
500.0	3.00	263.12	500.0	-0.3	-2.6	2.6	3.00	3.00	0.00
600.0	6.00	263.12	599.6	-1.3	-10.4	10.5	3.00	3.00	0.00
700.0	9.00	263.12	698.8	-2.8	-23.3	23.5	3.00	3.00	0.00
800.0	12.00	263.12	797.1	-5.0	-41.4	41.7	3.00	3.00	0.00
900.0	15.00	263.12	894.3	-7.8	-64.6	65.1	3.00	3.00	0.00
1,000.0	18.00	263.12	990.2	-11.2	-92.8	93.5	3.00	3.00	0.00
<b>EOB @ 20.25° Inc. / 263.12° Azm</b>									
1,075.0	20.25	263.12	1,061.0	-14.1	-117.2	118.0	3.00	3.00	0.00
1,100.0	20.25	263.12	1,084.5	-15.2	-125.8	126.7	0.00	0.00	0.00
1,200.0	20.25	263.12	1,178.3	-19.3	-160.1	161.3	0.00	0.00	0.00
1,300.0	20.25	263.12	1,272.1	-23.5	-194.5	195.9	0.00	0.00	0.00
1,400.0	20.25	263.12	1,365.9	-27.6	-228.9	230.5	0.00	0.00	0.00
1,500.0	20.25	263.12	1,459.8	-31.7	-263.2	265.1	0.00	0.00	0.00
1,600.0	20.25	263.12	1,553.6	-35.9	-297.6	299.7	0.00	0.00	0.00
1,700.0	20.25	263.12	1,647.4	-40.0	-332.0	334.3	0.00	0.00	0.00
1,800.0	20.25	263.12	1,741.2	-44.2	-366.3	369.0	0.00	0.00	0.00
1,900.0	20.25	263.12	1,835.0	-48.3	-400.7	403.6	0.00	0.00	0.00
2,000.0	20.25	263.12	1,928.9	-52.5	-435.0	438.2	0.00	0.00	0.00
2,100.0	20.25	263.12	2,022.7	-56.6	-469.4	472.8	0.00	0.00	0.00
2,200.0	20.25	263.12	2,116.5	-60.8	-503.8	507.4	0.00	0.00	0.00
2,300.0	20.25	263.12	2,210.3	-64.9	-538.1	542.0	0.00	0.00	0.00
2,400.0	20.25	263.12	2,304.1	-69.0	-572.5	576.6	0.00	0.00	0.00
2,500.0	20.25	263.12	2,398.0	-73.2	-606.8	611.2	0.00	0.00	0.00
2,600.0	20.25	263.12	2,491.8	-77.3	-641.2	645.8	0.00	0.00	0.00
2,700.0	20.25	263.12	2,585.6	-81.5	-675.6	680.4	0.00	0.00	0.00
2,800.0	20.25	263.12	2,679.4	-85.6	-709.9	715.0	0.00	0.00	0.00
2,900.0	20.25	263.12	2,773.2	-89.8	-744.3	749.6	0.00	0.00	0.00
3,000.0	20.25	263.12	2,867.1	-93.9	-778.6	784.3	0.00	0.00	0.00
3,100.0	20.25	263.12	2,960.9	-98.1	-813.0	818.9	0.00	0.00	0.00
3,200.0	20.25	263.12	3,054.7	-102.2	-847.4	853.5	0.00	0.00	0.00
3,300.0	20.25	263.12	3,148.5	-106.3	-881.7	888.1	0.00	0.00	0.00
3,400.0	20.25	263.12	3,242.3	-110.5	-916.1	922.7	0.00	0.00	0.00
<b>Wasatch</b>									
3,448.7	20.25	263.12	3,288.0	-112.5	-932.8	939.5	0.00	0.00	0.00
3,500.0	20.25	263.12	3,336.2	-114.6	-950.4	957.3	0.00	0.00	0.00
3,600.0	20.25	263.12	3,430.0	-118.8	-984.8	991.9	0.00	0.00	0.00
3,700.0	20.25	263.12	3,523.8	-122.9	-1,019.2	1,026.5	0.00	0.00	0.00
3,800.0	20.25	263.12	3,617.6	-127.1	-1,053.5	1,061.1	0.00	0.00	0.00
3,900.0	20.25	263.12	3,711.4	-131.2	-1,087.9	1,095.7	0.00	0.00	0.00
4,000.0	20.25	263.12	3,805.3	-135.3	-1,122.2	1,130.3	0.00	0.00	0.00
4,100.0	20.25	263.12	3,899.1	-139.5	-1,156.6	1,164.9	0.00	0.00	0.00
4,200.0	20.25	263.12	3,992.9	-143.6	-1,191.0	1,199.6	0.00	0.00	0.00
4,300.0	20.25	263.12	4,086.7	-147.8	-1,225.3	1,234.2	0.00	0.00	0.00
4,400.0	20.25	263.12	4,180.5	-151.9	-1,259.7	1,268.8	0.00	0.00	0.00
4,500.0	20.25	263.12	4,274.4	-156.1	-1,294.0	1,303.4	0.00	0.00	0.00
4,600.0	20.25	263.12	4,368.2	-160.2	-1,328.4	1,338.0	0.00	0.00	0.00
4,700.0	20.25	263.12	4,462.0	-164.4	-1,362.8	1,372.6	0.00	0.00	0.00

<b>Database:</b>	EDM 5000.1 Single User Db	<b>Local Co-ordinate Reference:</b>	Well BJU M23A FED 25B-22 496 - Slot 25B-22
<b>Company:</b>	Caerus Oil & Gas	<b>TVD Reference:</b>	RKB @ 8134.0usft (30')
<b>Project:</b>	Garfield County, CO	<b>MD Reference:</b>	RKB @ 8134.0usft (30')
<b>Site:</b>	BJU M23A 496 Pad	<b>North Reference:</b>	True
<b>Well:</b>	BJU M23A FED 25B-22 496	<b>Survey Calculation Method:</b>	Minimum Curvature
<b>Wellbore:</b>	Wellbore #1		
<b>Design:</b>	Design #2		

## Planned Survey

Measured Depth (usft)	Inclination (°)	Azimuth (°)	Vertical Depth (usft)	+N/-S (usft)	+E/-W (usft)	Vertical Section (usft)	Dogleg Rate (°/100usft)	Build Rate (°/100usft)	Turn Rate (°/100usft)
4,800.0	20.25	263.12	4,555.8	-168.5	-1,397.1	1,407.2	0.00	0.00	0.00
4,900.0	20.25	263.12	4,649.6	-172.6	-1,431.5	1,441.8	0.00	0.00	0.00
5,000.0	20.25	263.12	4,743.5	-176.8	-1,465.9	1,476.4	0.00	0.00	0.00
5,100.0	20.25	263.12	4,837.3	-180.9	-1,500.2	1,511.0	0.00	0.00	0.00
5,200.0	20.25	263.12	4,931.1	-185.1	-1,534.6	1,545.6	0.00	0.00	0.00
5,300.0	20.25	263.12	5,024.9	-189.2	-1,568.9	1,580.2	0.00	0.00	0.00
5,400.0	20.25	263.12	5,118.7	-193.4	-1,603.3	1,614.9	0.00	0.00	0.00
5,500.0	20.25	263.12	5,212.6	-197.5	-1,637.7	1,649.5	0.00	0.00	0.00
5,600.0	20.25	263.12	5,306.4	-201.7	-1,672.0	1,684.1	0.00	0.00	0.00
5,700.0	20.25	263.12	5,400.2	-205.8	-1,706.4	1,718.7	0.00	0.00	0.00
5,800.0	20.25	263.12	5,494.0	-209.9	-1,740.7	1,753.3	0.00	0.00	0.00
5,900.0	20.25	263.12	5,587.8	-214.1	-1,775.1	1,787.9	0.00	0.00	0.00
6,000.0	20.25	263.12	5,681.7	-218.2	-1,809.5	1,822.5	0.00	0.00	0.00
<b>Wasatch G</b>									
6,006.8	20.25	263.12	5,688.0	-218.5	-1,811.8	1,824.8	0.00	0.00	0.00
6,100.0	20.25	263.12	5,775.5	-222.4	-1,843.8	1,857.1	0.00	0.00	0.00
6,200.0	20.25	263.12	5,869.3	-226.5	-1,878.2	1,891.7	0.00	0.00	0.00
6,300.0	20.25	263.12	5,963.1	-230.7	-1,912.5	1,926.3	0.00	0.00	0.00
<b>Fort Union</b>									
6,326.5	20.25	263.12	5,988.0	-231.8	-1,921.6	1,935.5	0.00	0.00	0.00
6,400.0	20.25	263.12	6,056.9	-234.8	-1,946.9	1,960.9	0.00	0.00	0.00
6,500.0	20.25	263.12	6,150.8	-239.0	-1,981.3	1,995.5	0.00	0.00	0.00
6,600.0	20.25	263.12	6,244.6	-243.1	-2,015.6	2,030.2	0.00	0.00	0.00
6,700.0	20.25	263.12	6,338.4	-247.2	-2,050.0	2,064.8	0.00	0.00	0.00
6,800.0	20.25	263.12	6,432.2	-251.4	-2,084.3	2,099.4	0.00	0.00	0.00
6,900.0	20.25	263.12	6,526.0	-255.5	-2,118.7	2,134.0	0.00	0.00	0.00
7,000.0	20.25	263.12	6,619.9	-259.7	-2,153.1	2,168.6	0.00	0.00	0.00
7,100.0	20.25	263.12	6,713.7	-263.8	-2,187.4	2,203.2	0.00	0.00	0.00
7,200.0	20.25	263.12	6,807.5	-268.0	-2,221.8	2,237.8	0.00	0.00	0.00
7,300.0	20.25	263.12	6,901.3	-272.1	-2,256.1	2,272.4	0.00	0.00	0.00
7,400.0	20.25	263.12	6,995.1	-276.2	-2,290.5	2,307.0	0.00	0.00	0.00
7,500.0	20.25	263.12	7,089.0	-280.4	-2,324.9	2,341.6	0.00	0.00	0.00
7,600.0	20.25	263.12	7,182.8	-284.5	-2,359.2	2,376.2	0.00	0.00	0.00
7,700.0	20.25	263.12	7,276.6	-288.7	-2,393.6	2,410.8	0.00	0.00	0.00
<b>Drop 3° /100'</b>									
7,724.9	20.25	263.12	7,300.0	-289.7	-2,402.2	2,419.5	0.00	0.00	0.00
7,800.0	18.00	263.12	7,370.9	-292.7	-2,426.6	2,444.1	3.00	-3.00	0.00
7,900.0	15.00	263.12	7,466.8	-296.1	-2,454.8	2,472.5	3.00	-3.00	0.00
8,000.0	12.00	263.12	7,564.0	-298.9	-2,477.9	2,495.8	3.00	-3.00	0.00
8,100.0	9.00	263.12	7,662.3	-301.0	-2,496.0	2,514.0	3.00	-3.00	0.00
8,200.0	6.00	263.12	7,761.5	-302.6	-2,509.0	2,527.0	3.00	-3.00	0.00
8,300.0	3.00	263.12	7,861.1	-303.5	-2,516.7	2,534.9	3.00	-3.00	0.00
<b>EOD @ Vertical / Build 1.5° / 100' - Ohio Creek - TOG</b>									
8,399.9	0.00	0.00	7,961.0	-303.8	-2,519.3	2,537.5	3.00	-3.00	0.00
<b>EOB @ 1.39° Inc. / 250.00° Azm</b>									
8,492.9	1.39	250.00	8,053.9	-304.2	-2,520.4	2,538.6	1.50	1.50	0.00
8,500.0	1.39	250.00	8,061.1	-304.3	-2,520.6	2,538.8	0.00	0.00	0.00
8,600.0	1.39	250.00	8,161.1	-305.1	-2,522.9	2,541.1	0.00	0.00	0.00
8,700.0	1.39	250.00	8,261.0	-306.0	-2,525.1	2,543.5	0.00	0.00	0.00
<b>William Fork</b>									
8,795.0	1.39	250.00	8,356.0	-306.7	-2,527.3	2,545.8	0.00	0.00	0.00
8,800.0	1.39	250.00	8,361.0	-306.8	-2,527.4	2,545.9	0.00	0.00	0.00

<b>Database:</b>	EDM 5000.1 Single User Db	<b>Local Co-ordinate Reference:</b>	Well BJU M23A FED 25B-22 496 - Slot 25B-22
<b>Company:</b>	Caerus Oil & Gas	<b>TVD Reference:</b>	RKB @ 8134.0usft (30')
<b>Project:</b>	Garfield County, CO	<b>MD Reference:</b>	RKB @ 8134.0usft (30')
<b>Site:</b>	BJU M23A 496 Pad	<b>North Reference:</b>	True
<b>Well:</b>	BJU M23A FED 25B-22 496	<b>Survey Calculation Method:</b>	Minimum Curvature
<b>Wellbore:</b>	Wellbore #1		
<b>Design:</b>	Design #2		

Planned Survey									
Measured Depth (usft)	Inclination (°)	Azimuth (°)	Vertical Depth (usft)	+N/-S (usft)	+E/-W (usft)	Vertical Section (usft)	Dogleg Rate (°/100usft)	Build Rate (°/100usft)	Turn Rate (°/100usft)
8,900.0	1.39	250.00	8,461.0	-307.6	-2,529.7	2,548.3	0.00	0.00	0.00
9,000.0	1.39	250.00	8,560.9	-308.5	-2,532.0	2,550.6	0.00	0.00	0.00
9,100.0	1.39	250.00	8,660.9	-309.3	-2,534.3	2,553.0	0.00	0.00	0.00
9,200.0	1.39	250.00	8,760.9	-310.1	-2,536.6	2,555.4	0.00	0.00	0.00
9,300.0	1.39	250.00	8,860.9	-311.0	-2,538.9	2,557.8	0.00	0.00	0.00
9,400.0	1.39	250.00	8,960.8	-311.8	-2,541.1	2,560.1	0.00	0.00	0.00
9,500.0	1.39	250.00	9,060.8	-312.6	-2,543.4	2,562.5	0.00	0.00	0.00
9,600.0	1.39	250.00	9,160.8	-313.4	-2,545.7	2,564.9	0.00	0.00	0.00
9,700.0	1.39	250.00	9,260.7	-314.3	-2,548.0	2,567.3	0.00	0.00	0.00
9,800.0	1.39	250.00	9,360.7	-315.1	-2,550.3	2,569.6	0.00	0.00	0.00
9,900.0	1.39	250.00	9,460.7	-315.9	-2,552.6	2,572.0	0.00	0.00	0.00
10,000.0	1.39	250.00	9,560.6	-316.8	-2,554.9	2,574.4	0.00	0.00	0.00
10,100.0	1.39	250.00	9,660.6	-317.6	-2,557.1	2,576.8	0.00	0.00	0.00
10,200.0	1.39	250.00	9,760.6	-318.4	-2,559.4	2,579.1	0.00	0.00	0.00
10,300.0	1.39	250.00	9,860.6	-319.3	-2,561.7	2,581.5	0.00	0.00	0.00
10,400.0	1.39	250.00	9,960.5	-320.1	-2,564.0	2,583.9	0.00	0.00	0.00
10,500.0	1.39	250.00	10,060.5	-320.9	-2,566.3	2,586.3	0.00	0.00	0.00
10,600.0	1.39	250.00	10,160.5	-321.8	-2,568.6	2,588.6	0.00	0.00	0.00
10,700.0	1.39	250.00	10,260.4	-322.6	-2,570.9	2,591.0	0.00	0.00	0.00
10,800.0	1.39	250.00	10,360.4	-323.4	-2,573.2	2,593.4	0.00	0.00	0.00
10,900.0	1.39	250.00	10,460.4	-324.3	-2,575.4	2,595.8	0.00	0.00	0.00
11,000.0	1.39	250.00	10,560.3	-325.1	-2,577.7	2,598.1	0.00	0.00	0.00
11,100.0	1.39	250.00	10,660.3	-325.9	-2,580.0	2,600.5	0.00	0.00	0.00
11,200.0	1.39	250.00	10,760.3	-326.8	-2,582.3	2,602.9	0.00	0.00	0.00
11,300.0	1.39	250.00	10,860.3	-327.6	-2,584.6	2,605.3	0.00	0.00	0.00
11,400.0	1.39	250.00	10,960.2	-328.4	-2,586.9	2,607.6	0.00	0.00	0.00
11,500.0	1.39	250.00	11,060.2	-329.3	-2,589.2	2,610.0	0.00	0.00	0.00
<b>Cameo</b>									
11,555.8	1.39	250.00	11,116.0	-329.7	-2,590.4	2,611.3	0.00	0.00	0.00
11,600.0	1.39	250.00	11,160.2	-330.1	-2,591.4	2,612.4	0.00	0.00	0.00
11,700.0	1.39	250.00	11,260.1	-330.9	-2,593.7	2,614.8	0.00	0.00	0.00
11,800.0	1.39	250.00	11,360.1	-331.8	-2,596.0	2,617.1	0.00	0.00	0.00
11,900.0	1.39	250.00	11,460.1	-332.6	-2,598.3	2,619.5	0.00	0.00	0.00
12,000.0	1.39	250.00	11,560.1	-333.4	-2,600.6	2,621.9	0.00	0.00	0.00
<b>Rollins</b>									
12,056.0	1.39	250.00	11,616.0	-333.9	-2,601.9	2,623.2	0.00	0.00	0.00
12,100.0	1.39	250.00	11,660.0	-334.3	-2,602.9	2,624.3	0.00	0.00	0.00
12,200.0	1.39	250.00	11,760.0	-335.1	-2,605.2	2,626.6	0.00	0.00	0.00
12,300.0	1.39	250.00	11,860.0	-335.9	-2,607.5	2,629.0	0.00	0.00	0.00
12,400.0	1.39	250.00	11,959.9	-336.8	-2,609.7	2,631.4	0.00	0.00	0.00
12,500.0	1.39	250.00	12,059.9	-337.6	-2,612.0	2,633.7	0.00	0.00	0.00
<b>TD @ 12556.1' MD / 12116.0' TVD</b>									
12,556.1	1.39	250.00	12,116.0	-338.0	-2,613.3	2,635.1	0.00	0.00	0.00

<b>Database:</b>	EDM 5000.1 Single User Db	<b>Local Co-ordinate Reference:</b>	Well BJU M23A FED 25B-22 496 - Slot 25B-22
<b>Company:</b>	Caerus Oil & Gas	<b>TVD Reference:</b>	RKB @ 8134.0usft (30')
<b>Project:</b>	Garfield County, CO	<b>MD Reference:</b>	RKB @ 8134.0usft (30')
<b>Site:</b>	BJU M23A 496 Pad	<b>North Reference:</b>	True
<b>Well:</b>	BJU M23A FED 25B-22 496	<b>Survey Calculation Method:</b>	Minimum Curvature
<b>Wellbore:</b>	Wellbore #1		
<b>Design:</b>	Design #2		

#### Design Targets

Target Name - hit/miss target - Shape	Dip Angle (°)	Dip Dir. (°)	TVD (usft)	+N/-S (usft)	+E/-W (usft)	Northing (usft)	Easting (usft)	Latitude	Longitude
OHCR - 25B-22 - plan hits target center - Point	0.00	0.00	7,961.0	-303.8	-2,519.3	14,423,417.78	2,442,547.63	39.683144	-108.149196
PBHL - 25B-22 - plan hits target center - Ellipse (radii L100.0 W50.0 on 250.00 azi)	0.00	0.00	12,116.0	-338.0	-2,613.3	14,423,380.60	2,442,454.80	39.683051	-108.149530

#### Formations

Measured Depth (usft)	Vertical Depth (usft)	Name	Lithology	Dip (°)	Dip Direction (°)
3,448.7	3,288.0	Wasatch			
6,006.8	5,688.0	Wasatch G			
6,326.5	5,988.0	Fort Union			
8,399.9	7,961.0	Ohio Creek			
8,399.9	7,961.0	TOG			
8,795.0	8,356.0	William Fork			
11,555.8	11,116.0	Cameo			
12,056.0	11,616.0	Rollins			

#### Plan Annotations

Measured Depth (usft)	Vertical Depth (usft)	Local Coordinates		Comment
		+N/-S (usft)	+E/-W (usft)	
400.0	400.0	0.0	0.0	Build 3° / 100'
1,075.0	1,061.0	-14.1	-117.2	EOB @ 20.25° Inc. / 263.12° Azm
7,724.9	7,300.0	-289.7	-2,402.2	Drop 3° / 100'
8,399.9	7,961.0	-303.8	-2,519.3	EOD @ Vertical / Build 1.5° / 100'
8,492.9	8,053.9	-304.2	-2,520.4	EOB @ 1.39° Inc. / 250.00° Azm
12,556.1	12,116.0	-338.0	-2,613.3	TD @ 12556.1' MD / 12116.0' TVD