

Project: Garfield County, CO  
 Site: BJU M23A 496 Pad  
 Well: BJU M23A FED 24D-23 496  
 Wellbore: Wellbore #1  
 Design: Design #2  
 Latitude: 39.684312  
 Longitude: -108.140131  
 Ground Level: 8104.0  
 RKB @ 8134.0usft (30')

PROJECT DETAILS: Garfield County, CO

Geodetic System: Universal Transverse Mercator (US Survey Feet)  
 Datum: NAD 1927 - Western US  
 Ellipsoid: Clarke 1866  
 Zone: Zone 12N (114 W to 108 W)  
 System Datum: Mean Sea Level

REFERENCE INFORMATION

Vertical (TVD) Reference: RKB @ 8134.0usft (30')  
 Section (VS) Reference: Slot - 24D-23(0.0N, 0.0E)  
 Measured Depth Reference: RKB @ 8134.0usft (30')  
 Calculation Method: Minimum Curvature

FORMATION TOP DETAILS

TVDPath	MDPath	Formation
3492.0	3594.5	Wasatch
5892.0	6087.5	Wasatch G
6192.0	6399.2	Fort Union
8153.0	8422.7	Ohio Creek
8153.0	8422.7	TOG
8552.0	8821.8	William Fork
11470.0	11740.6	Cameo
11970.0	12240.7	Rollins

SECTION DETAILS

MD	Inc	Azi	TVD	+N-S	+E-W	Dleg	TFace	VSect	Annotation
0.0	0.00	0.00	0.0	0.0	0.0	0.00	0.00	0.0	
500.0	0.00	0.00	500.0	0.0	0.0	0.00	0.00	0.0	Build 3° / 100'
1023.4	15.70	94.19	1016.9	-5.2	71.1	3.00	94.19	71.3	EOB @ 15.70° Inc. / 94.19° Azm
7899.2	15.70	94.19	7636.1	-141.2	1927.1	0.00	0.00	1931.8	Drop 3° / 100'
8422.7	0.00	0.00	8153.0	-146.4	1998.2	3.00	180.00	2003.1	EOD @ Vertical / Build 1.5° / 100'
8512.1	1.34	250.00	8242.4	-146.8	1997.2	1.50	250.00	2002.1	EOB @ 1.34° Inc. / 250.00° Azm
12740.9	1.34	250.00	12470.0	-180.6	1904.2	0.00	0.00	1912.8	TD @ 12740.9° MD / 12470.0° TVD

DESIGN TARGET DETAILS

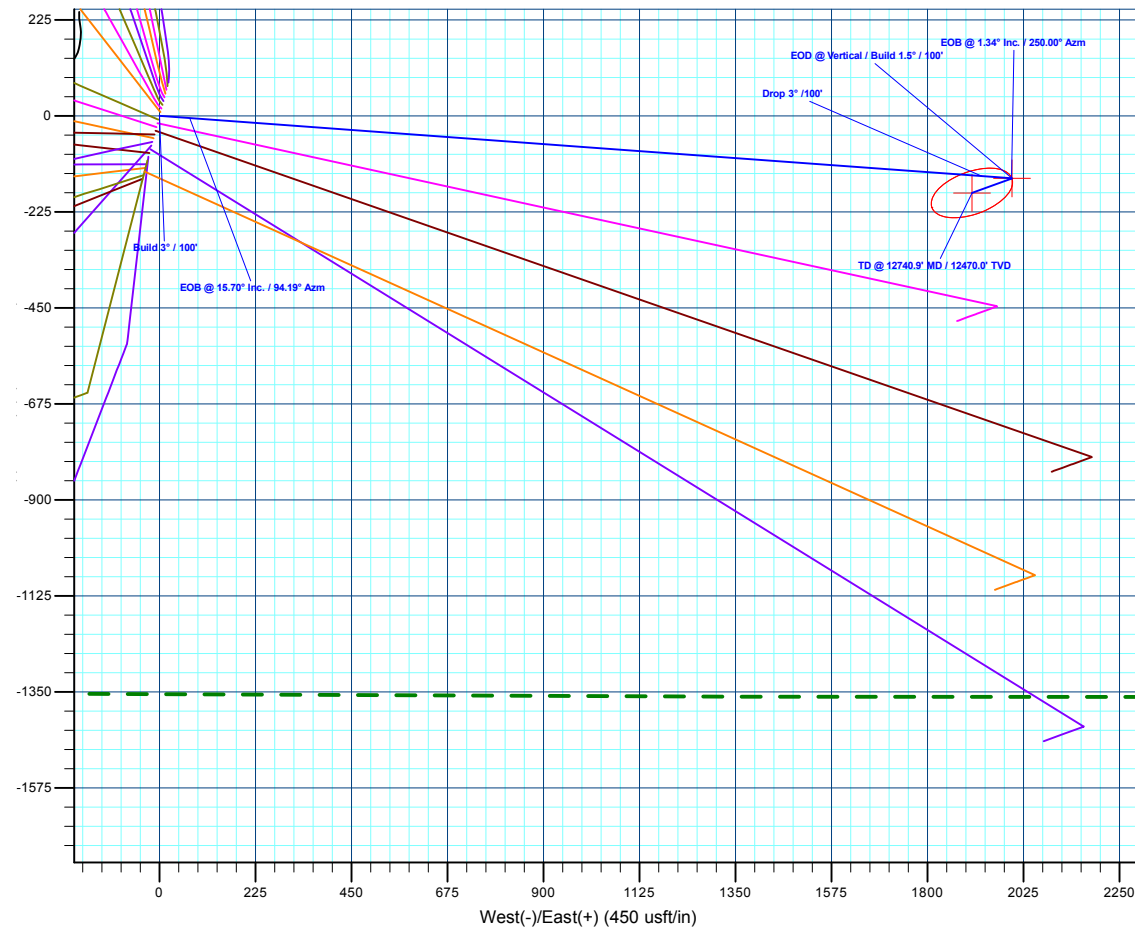
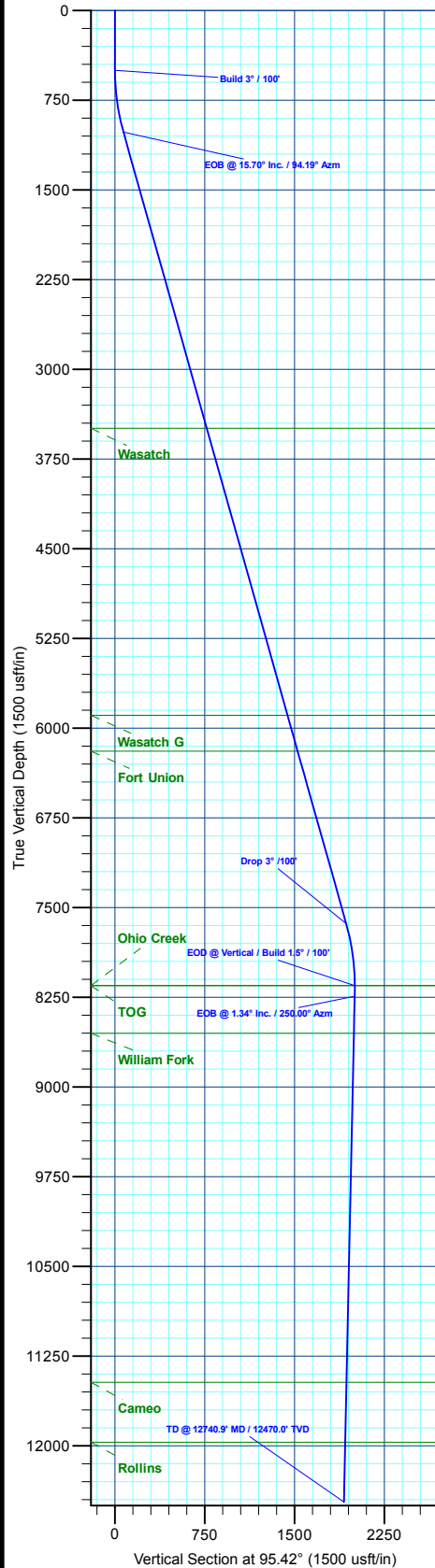
Name	TVD	+N-S	+E-W	Northing	Easting	Latitude	Longitude
OHCR - 24D-23	8153.0	-146.4	1998.2	14423841.78	2447086.83	39.683910	-108.133034
PBHL - 24D-23	12470.0	-180.6	1904.2	14423804.60	2446994.00	39.683816	-108.133368

WELL DETAILS: BJU M23A FED 24D-23 496

+N-S	+E-W	Ground Level	Northing	Easting	Latitude	Longitude	24D-23
0.0	0.0	8104.0	14423924.40	2445085.00	39.684312	-108.140131	24D-23



**T M**  
 Azimuths to True North  
 Magnetic North: 9.43°  
 Magnetic Field  
 Strength: 51187.3nT  
 Dip Angle: 65.82°  
 Date: 6/3/2020  
 Model: HDGM2020



Plan: Design #2 (BJU M23A FED 24D-23 496/Wellbore #1)

Created By: Will Jircik Date: 15:58, July 18 2022



## **Caerus Oil & Gas**

**Garfield County, CO**

**BJU M23A 496 Pad**

**BJU M23A FED 24D-23 496 - Slot 24D-23**

**Wellbore #1**

**Plan: Design #2**

## **KLX Well Planning Report**

**18 July, 2022**



<b>Database:</b>	EDM 5000.1 Single User Db	<b>Local Co-ordinate Reference:</b>	Well BJU M23A FED 24D-23 496 - Slot 24D-23
<b>Company:</b>	Caerus Oil & Gas	<b>TVD Reference:</b>	RKB @ 8134.0usft (30')
<b>Project:</b>	Garfield County, CO	<b>MD Reference:</b>	RKB @ 8134.0usft (30')
<b>Site:</b>	BJU M23A 496 Pad	<b>North Reference:</b>	True
<b>Well:</b>	BJU M23A FED 24D-23 496	<b>Survey Calculation Method:</b>	Minimum Curvature
<b>Wellbore:</b>	Wellbore #1		
<b>Design:</b>	Design #2		

<b>Project</b>	Garfield County, CO		
<b>Map System:</b>	Universal Transverse Mercator (US Survey Fee	<b>System Datum:</b>	Mean Sea Level
<b>Geo Datum:</b>	NAD 1927 - Western US		
<b>Map Zone:</b>	Zone 12N (114 W to 108 W)		

<b>Site</b>	BJU M23A 496 Pad				
<b>Site Position:</b>	<b>Northing:</b>	14,424,028.50 usft	<b>Latitude:</b>	39.684596	
<b>From:</b> Map	<b>Easting:</b>	2,445,109.60 usft	<b>Longitude:</b>	-108.140032	
<b>Position Uncertainty:</b>	0.0 usft	<b>Slot Radius:</b>	13-3/16 "	<b>Grid Convergence:</b>	1.83 °

<b>Well</b>	BJU M23A FED 24D-23 496 - Slot 24D-23					
<b>Well Position</b>	<b>+N/-S</b>	-103.3 usft	<b>Northing:</b>	14,423,924.40 usft	<b>Latitude:</b>	39.684312
	<b>+E/-W</b>	-27.9 usft	<b>Easting:</b>	2,445,085.00 usft	<b>Longitude:</b>	-108.140131
<b>Position Uncertainty</b>	0.0 usft		<b>Wellhead Elevation:</b>		<b>Ground Level:</b>	8,104.0 usft

<b>Wellbore</b>	Wellbore #1				
<b>Magnetics</b>	<b>Model Name</b>	<b>Sample Date</b>	<b>Declination (°)</b>	<b>Dip Angle (°)</b>	<b>Field Strength (nT)</b>
	HDGM2020	6/3/2020	9.43	65.82	51,187.30000000

<b>Design</b>	Design #2			
<b>Audit Notes:</b>				
<b>Version:</b>	<b>Phase:</b>	PLAN	<b>Tie On Depth:</b>	0.0
<b>Vertical Section:</b>	<b>Depth From (TVD) (usft)</b>	<b>+N/-S (usft)</b>	<b>+E/-W (usft)</b>	<b>Direction (°)</b>
	0.0	0.0	0.0	95.42

<b>Plan Sections</b>											
Measured Depth (usft)	Inclination (°)	Azimuth (°)	Vertical Depth (usft)	+N/-S (usft)	+E/-W (usft)	Dogleg Rate (°/100usft)	Build Rate (°/100usft)	Turn Rate (°/100usft)	TFO (°)	Target	
0.0	0.00	0.00	0.0	0.0	0.0	0.00	0.00	0.00	0.00		
500.0	0.00	0.00	500.0	0.0	0.0	0.00	0.00	0.00	0.00		
1,023.4	15.70	94.19	1,016.9	-5.2	71.1	3.00	3.00	0.00	94.19		
7,899.2	15.70	94.19	7,636.1	-141.2	1,927.1	0.00	0.00	0.00	0.00		
8,422.7	0.00	0.00	8,153.0	-146.4	1,998.2	3.00	-3.00	0.00	180.00	OHCR - 24D-23	
8,512.1	1.34	250.00	8,242.4	-146.8	1,997.2	1.50	1.50	-123.06	250.00		
12,740.9	1.34	250.00	12,470.0	-180.6	1,904.2	0.00	0.00	0.00	0.00	PBHL - 24D-23	

<b>Database:</b>	EDM 5000.1 Single User Db	<b>Local Co-ordinate Reference:</b>	Well BJU M23A FED 24D-23 496 - Slot 24D-23
<b>Company:</b>	Caerus Oil & Gas	<b>TVD Reference:</b>	RKB @ 8134.0usft (30')
<b>Project:</b>	Garfield County, CO	<b>MD Reference:</b>	RKB @ 8134.0usft (30')
<b>Site:</b>	BJU M23A 496 Pad	<b>North Reference:</b>	True
<b>Well:</b>	BJU M23A FED 24D-23 496	<b>Survey Calculation Method:</b>	Minimum Curvature
<b>Wellbore:</b>	Wellbore #1		
<b>Design:</b>	Design #2		

**Planned Survey**

Measured Depth (usft)	Inclination (°)	Azimuth (°)	Vertical Depth (usft)	+N/-S (usft)	+E/-W (usft)	Vertical Section (usft)	Dogleg Rate (°/100usft)	Build Rate (°/100usft)	Turn Rate (°/100usft)
0.0	0.00	0.00	0.0	0.0	0.0	0.0	0.00	0.00	0.00
100.0	0.00	0.00	100.0	0.0	0.0	0.0	0.00	0.00	0.00
200.0	0.00	0.00	200.0	0.0	0.0	0.0	0.00	0.00	0.00
300.0	0.00	0.00	300.0	0.0	0.0	0.0	0.00	0.00	0.00
400.0	0.00	0.00	400.0	0.0	0.0	0.0	0.00	0.00	0.00
<b>Build 3° / 100'</b>									
500.0	0.00	0.00	500.0	0.0	0.0	0.0	0.00	0.00	0.00
600.0	3.00	94.19	600.0	-0.2	2.6	2.6	3.00	3.00	0.00
700.0	6.00	94.19	699.6	-0.8	10.4	10.5	3.00	3.00	0.00
800.0	9.00	94.19	798.8	-1.7	23.5	23.5	3.00	3.00	0.00
900.0	12.00	94.19	897.1	-3.0	41.6	41.7	3.00	3.00	0.00
1,000.0	15.00	94.19	994.3	-4.8	64.9	65.1	3.00	3.00	0.00
<b>EOB @ 15.70° Inc. / 94.19° Azm</b>									
1,023.4	15.70	94.19	1,016.9	-5.2	71.1	71.3	3.00	3.00	0.00
1,100.0	15.70	94.19	1,090.6	-6.7	91.8	92.0	0.00	0.00	0.00
1,200.0	15.70	94.19	1,186.9	-8.7	118.8	119.0	0.00	0.00	0.00
1,300.0	15.70	94.19	1,283.1	-10.7	145.7	146.1	0.00	0.00	0.00
1,400.0	15.70	94.19	1,379.4	-12.7	172.7	173.2	0.00	0.00	0.00
1,500.0	15.70	94.19	1,475.7	-14.6	199.7	200.2	0.00	0.00	0.00
1,600.0	15.70	94.19	1,572.0	-16.6	226.7	227.3	0.00	0.00	0.00
1,700.0	15.70	94.19	1,668.2	-18.6	253.7	254.3	0.00	0.00	0.00
1,800.0	15.70	94.19	1,764.5	-20.6	280.7	281.4	0.00	0.00	0.00
1,900.0	15.70	94.19	1,860.8	-22.5	307.7	308.5	0.00	0.00	0.00
2,000.0	15.70	94.19	1,957.0	-24.5	334.7	335.5	0.00	0.00	0.00
2,100.0	15.70	94.19	2,053.3	-26.5	361.7	362.6	0.00	0.00	0.00
2,200.0	15.70	94.19	2,149.6	-28.5	388.7	389.6	0.00	0.00	0.00
2,300.0	15.70	94.19	2,245.8	-30.5	415.7	416.7	0.00	0.00	0.00
2,400.0	15.70	94.19	2,342.1	-32.4	442.7	443.8	0.00	0.00	0.00
2,500.0	15.70	94.19	2,438.4	-34.4	469.7	470.8	0.00	0.00	0.00
2,600.0	15.70	94.19	2,534.6	-36.4	496.7	497.9	0.00	0.00	0.00
2,700.0	15.70	94.19	2,630.9	-38.4	523.6	524.9	0.00	0.00	0.00
2,800.0	15.70	94.19	2,727.2	-40.3	550.6	552.0	0.00	0.00	0.00
2,900.0	15.70	94.19	2,823.4	-42.3	577.6	579.0	0.00	0.00	0.00
3,000.0	15.70	94.19	2,919.7	-44.3	604.6	606.1	0.00	0.00	0.00
3,100.0	15.70	94.19	3,016.0	-46.3	631.6	633.2	0.00	0.00	0.00
3,200.0	15.70	94.19	3,112.2	-48.3	658.6	660.2	0.00	0.00	0.00
3,300.0	15.70	94.19	3,208.5	-50.2	685.6	687.3	0.00	0.00	0.00
3,400.0	15.70	94.19	3,304.8	-52.2	712.6	714.3	0.00	0.00	0.00
3,500.0	15.70	94.19	3,401.0	-54.2	739.6	741.4	0.00	0.00	0.00
<b>Wasatch</b>									
3,594.5	15.70	94.19	3,492.0	-56.1	765.1	767.0	0.00	0.00	0.00
3,600.0	15.70	94.19	3,497.3	-56.2	766.6	768.5	0.00	0.00	0.00
3,700.0	15.70	94.19	3,593.6	-58.1	793.6	795.5	0.00	0.00	0.00
3,800.0	15.70	94.19	3,689.8	-60.1	820.6	822.6	0.00	0.00	0.00
3,900.0	15.70	94.19	3,786.1	-62.1	847.6	849.6	0.00	0.00	0.00
4,000.0	15.70	94.19	3,882.4	-64.1	874.6	876.7	0.00	0.00	0.00
4,100.0	15.70	94.19	3,978.6	-66.1	901.6	903.8	0.00	0.00	0.00
4,200.0	15.70	94.19	4,074.9	-68.0	928.5	930.8	0.00	0.00	0.00
4,300.0	15.70	94.19	4,171.2	-70.0	955.5	957.9	0.00	0.00	0.00
4,400.0	15.70	94.19	4,267.4	-72.0	982.5	984.9	0.00	0.00	0.00
4,500.0	15.70	94.19	4,363.7	-74.0	1,009.5	1,012.0	0.00	0.00	0.00
4,600.0	15.70	94.19	4,460.0	-75.9	1,036.5	1,039.1	0.00	0.00	0.00
4,700.0	15.70	94.19	4,556.2	-77.9	1,063.5	1,066.1	0.00	0.00	0.00

<b>Database:</b>	EDM 5000.1 Single User Db	<b>Local Co-ordinate Reference:</b>	Well BJU M23A FED 24D-23 496 - Slot 24D-23
<b>Company:</b>	Caerus Oil & Gas	<b>TVD Reference:</b>	RKB @ 8134.0usft (30')
<b>Project:</b>	Garfield County, CO	<b>MD Reference:</b>	RKB @ 8134.0usft (30')
<b>Site:</b>	BJU M23A 496 Pad	<b>North Reference:</b>	True
<b>Well:</b>	BJU M23A FED 24D-23 496	<b>Survey Calculation Method:</b>	Minimum Curvature
<b>Wellbore:</b>	Wellbore #1		
<b>Design:</b>	Design #2		

**Planned Survey**

Measured Depth (usft)	Inclination (°)	Azimuth (°)	Vertical Depth (usft)	+N/-S (usft)	+E/-W (usft)	Vertical Section (usft)	Dogleg Rate (°/100usft)	Build Rate (°/100usft)	Turn Rate (°/100usft)
4,800.0	15.70	94.19	4,652.5	-79.9	1,090.5	1,093.2	0.00	0.00	0.00
4,900.0	15.70	94.19	4,748.8	-81.9	1,117.5	1,120.2	0.00	0.00	0.00
5,000.0	15.70	94.19	4,845.1	-83.9	1,144.5	1,147.3	0.00	0.00	0.00
5,100.0	15.70	94.19	4,941.3	-85.8	1,171.5	1,174.4	0.00	0.00	0.00
5,200.0	15.70	94.19	5,037.6	-87.8	1,198.5	1,201.4	0.00	0.00	0.00
5,300.0	15.70	94.19	5,133.9	-89.8	1,225.5	1,228.5	0.00	0.00	0.00
5,400.0	15.70	94.19	5,230.1	-91.8	1,252.5	1,255.5	0.00	0.00	0.00
5,500.0	15.70	94.19	5,326.4	-93.7	1,279.5	1,282.6	0.00	0.00	0.00
5,600.0	15.70	94.19	5,422.7	-95.7	1,306.4	1,309.6	0.00	0.00	0.00
5,700.0	15.70	94.19	5,518.9	-97.7	1,333.4	1,336.7	0.00	0.00	0.00
5,800.0	15.70	94.19	5,615.2	-99.7	1,360.4	1,363.8	0.00	0.00	0.00
5,900.0	15.70	94.19	5,711.5	-101.7	1,387.4	1,390.8	0.00	0.00	0.00
6,000.0	15.70	94.19	5,807.7	-103.6	1,414.4	1,417.9	0.00	0.00	0.00
<b>Wasatch G</b>									
6,087.5	15.70	94.19	5,892.0	-105.4	1,438.0	1,441.6	0.00	0.00	0.00
6,100.0	15.70	94.19	5,904.0	-105.6	1,441.4	1,444.9	0.00	0.00	0.00
6,200.0	15.70	94.19	6,000.3	-107.6	1,468.4	1,472.0	0.00	0.00	0.00
6,300.0	15.70	94.19	6,096.5	-109.6	1,495.4	1,499.1	0.00	0.00	0.00
<b>Fort Union</b>									
6,399.2	15.70	94.19	6,192.0	-111.5	1,522.2	1,525.9	0.00	0.00	0.00
6,400.0	15.70	94.19	6,192.8	-111.5	1,522.4	1,526.1	0.00	0.00	0.00
6,500.0	15.70	94.19	6,289.1	-113.5	1,549.4	1,553.2	0.00	0.00	0.00
6,600.0	15.70	94.19	6,385.3	-115.5	1,576.4	1,580.2	0.00	0.00	0.00
6,700.0	15.70	94.19	6,481.6	-117.5	1,603.4	1,607.3	0.00	0.00	0.00
6,800.0	15.70	94.19	6,577.9	-119.5	1,630.4	1,634.4	0.00	0.00	0.00
6,900.0	15.70	94.19	6,674.1	-121.4	1,657.4	1,661.4	0.00	0.00	0.00
7,000.0	15.70	94.19	6,770.4	-123.4	1,684.4	1,688.5	0.00	0.00	0.00
7,100.0	15.70	94.19	6,866.7	-125.4	1,711.3	1,715.5	0.00	0.00	0.00
7,200.0	15.70	94.19	6,962.9	-127.4	1,738.3	1,742.6	0.00	0.00	0.00
7,300.0	15.70	94.19	7,059.2	-129.3	1,765.3	1,769.7	0.00	0.00	0.00
7,400.0	15.70	94.19	7,155.5	-131.3	1,792.3	1,796.7	0.00	0.00	0.00
7,500.0	15.70	94.19	7,251.7	-133.3	1,819.3	1,823.8	0.00	0.00	0.00
7,600.0	15.70	94.19	7,348.0	-135.3	1,846.3	1,850.8	0.00	0.00	0.00
7,700.0	15.70	94.19	7,444.3	-137.3	1,873.3	1,877.9	0.00	0.00	0.00
7,800.0	15.70	94.19	7,540.5	-139.2	1,900.3	1,905.0	0.00	0.00	0.00
<b>Drop 3° /100'</b>									
7,899.2	15.70	94.19	7,636.1	-141.2	1,927.1	1,931.8	0.00	0.00	0.00
8,000.0	12.68	94.19	7,733.8	-143.0	1,951.7	1,956.5	3.00	-3.00	0.00
8,100.0	9.68	94.19	7,831.8	-144.4	1,971.1	1,975.9	3.00	-3.00	0.00
8,200.0	6.68	94.19	7,930.8	-145.5	1,985.2	1,990.1	3.00	-3.00	0.00
8,300.0	3.68	94.19	8,030.4	-146.1	1,994.2	1,999.1	3.00	-3.00	0.00
8,400.0	0.68	94.19	8,130.3	-146.4	1,998.0	2,002.9	3.00	-3.00	0.00
<b>EOD @ Vertical / Build 1.5° / 100' - Ohio Creek - TOG</b>									
8,422.7	0.00	0.00	8,153.0	-146.4	1,998.2	2,003.1	3.00	-3.00	0.00
8,500.0	1.16	250.00	8,230.3	-146.7	1,997.4	2,002.4	1.50	1.50	0.00
<b>EOB @ 1.34° Inc. / 250.00° Azm</b>									
8,512.1	1.34	250.00	8,242.4	-146.8	1,997.2	2,002.1	1.50	1.50	0.00
8,600.0	1.34	250.00	8,330.3	-147.5	1,995.3	2,000.3	0.00	0.00	0.00
8,700.0	1.34	250.00	8,430.3	-148.3	1,993.1	1,998.2	0.00	0.00	0.00
8,800.0	1.34	250.00	8,530.2	-149.1	1,990.9	1,996.0	0.00	0.00	0.00
<b>William Fork</b>									
8,821.8	1.34	250.00	8,552.0	-149.2	1,990.4	1,995.6	0.00	0.00	0.00

<b>Database:</b>	EDM 5000.1 Single User Db	<b>Local Co-ordinate Reference:</b>	Well BJU M23A FED 24D-23 496 - Slot 24D-23
<b>Company:</b>	Caerus Oil & Gas	<b>TVD Reference:</b>	RKB @ 8134.0usft (30')
<b>Project:</b>	Garfield County, CO	<b>MD Reference:</b>	RKB @ 8134.0usft (30')
<b>Site:</b>	BJU M23A 496 Pad	<b>North Reference:</b>	True
<b>Well:</b>	BJU M23A FED 24D-23 496	<b>Survey Calculation Method:</b>	Minimum Curvature
<b>Wellbore:</b>	Wellbore #1		
<b>Design:</b>	Design #2		

**Planned Survey**

Measured Depth (usft)	Inclination (°)	Azimuth (°)	Vertical Depth (usft)	+N/-S (usft)	+E/-W (usft)	Vertical Section (usft)	Dogleg Rate (°/100usft)	Build Rate (°/100usft)	Turn Rate (°/100usft)
8,900.0	1.34	250.00	8,630.2	-149.9	1,988.7	1,993.9	0.00	0.00	0.00
9,000.0	1.34	250.00	8,730.2	-150.7	1,986.5	1,991.8	0.00	0.00	0.00
9,100.0	1.34	250.00	8,830.1	-151.5	1,984.3	1,989.7	0.00	0.00	0.00
9,200.0	1.34	250.00	8,930.1	-152.3	1,982.1	1,987.6	0.00	0.00	0.00
9,300.0	1.34	250.00	9,030.1	-153.1	1,979.9	1,985.5	0.00	0.00	0.00
9,400.0	1.34	250.00	9,130.1	-153.9	1,977.7	1,983.4	0.00	0.00	0.00
9,500.0	1.34	250.00	9,230.0	-154.7	1,975.5	1,981.3	0.00	0.00	0.00
9,600.0	1.34	250.00	9,330.0	-155.5	1,973.3	1,979.1	0.00	0.00	0.00
9,700.0	1.34	250.00	9,430.0	-156.3	1,971.1	1,977.0	0.00	0.00	0.00
9,800.0	1.34	250.00	9,530.0	-157.1	1,968.9	1,974.9	0.00	0.00	0.00
9,900.0	1.34	250.00	9,629.9	-157.9	1,966.7	1,972.8	0.00	0.00	0.00
10,000.0	1.34	250.00	9,729.9	-158.7	1,964.5	1,970.7	0.00	0.00	0.00
10,100.0	1.34	250.00	9,829.9	-159.5	1,962.3	1,968.6	0.00	0.00	0.00
10,200.0	1.34	250.00	9,929.8	-160.3	1,960.1	1,966.5	0.00	0.00	0.00
10,300.0	1.34	250.00	10,029.8	-161.1	1,957.9	1,964.3	0.00	0.00	0.00
10,400.0	1.34	250.00	10,129.8	-161.9	1,955.7	1,962.2	0.00	0.00	0.00
10,500.0	1.34	250.00	10,229.8	-162.7	1,953.5	1,960.1	0.00	0.00	0.00
10,600.0	1.34	250.00	10,329.7	-163.5	1,951.3	1,958.0	0.00	0.00	0.00
10,700.0	1.34	250.00	10,429.7	-164.3	1,949.1	1,955.9	0.00	0.00	0.00
10,800.0	1.34	250.00	10,529.7	-165.1	1,946.9	1,953.8	0.00	0.00	0.00
10,900.0	1.34	250.00	10,629.7	-165.9	1,944.7	1,951.7	0.00	0.00	0.00
11,000.0	1.34	250.00	10,729.6	-166.7	1,942.5	1,949.5	0.00	0.00	0.00
11,100.0	1.34	250.00	10,829.6	-167.5	1,940.3	1,947.4	0.00	0.00	0.00
11,200.0	1.34	250.00	10,929.6	-168.3	1,938.1	1,945.3	0.00	0.00	0.00
11,300.0	1.34	250.00	11,029.5	-169.1	1,935.9	1,943.2	0.00	0.00	0.00
11,400.0	1.34	250.00	11,129.5	-169.9	1,933.7	1,941.1	0.00	0.00	0.00
11,500.0	1.34	250.00	11,229.5	-170.7	1,931.5	1,939.0	0.00	0.00	0.00
11,600.0	1.34	250.00	11,329.5	-171.5	1,929.3	1,936.9	0.00	0.00	0.00
11,700.0	1.34	250.00	11,429.4	-172.3	1,927.1	1,934.8	0.00	0.00	0.00
<b>Cameo</b>									
11,740.6	1.34	250.00	11,470.0	-172.6	1,926.2	1,933.9	0.00	0.00	0.00
11,800.0	1.34	250.00	11,529.4	-173.1	1,924.9	1,932.6	0.00	0.00	0.00
11,900.0	1.34	250.00	11,629.4	-173.9	1,922.7	1,930.5	0.00	0.00	0.00
12,000.0	1.34	250.00	11,729.4	-174.7	1,920.5	1,928.4	0.00	0.00	0.00
12,100.0	1.34	250.00	11,829.3	-175.5	1,918.3	1,926.3	0.00	0.00	0.00
12,200.0	1.34	250.00	11,929.3	-176.3	1,916.1	1,924.2	0.00	0.00	0.00
<b>Rollins</b>									
12,240.7	1.34	250.00	11,970.0	-176.6	1,915.2	1,923.3	0.00	0.00	0.00
12,300.0	1.34	250.00	12,029.3	-177.1	1,913.9	1,922.1	0.00	0.00	0.00
12,400.0	1.34	250.00	12,129.2	-177.9	1,911.7	1,920.0	0.00	0.00	0.00
12,500.0	1.34	250.00	12,229.2	-178.7	1,909.5	1,917.8	0.00	0.00	0.00
12,600.0	1.34	250.00	12,329.2	-179.5	1,907.3	1,915.7	0.00	0.00	0.00
12,700.0	1.34	250.00	12,429.2	-180.3	1,905.1	1,913.6	0.00	0.00	0.00
<b>TD @ 12740.9' MD / 12470.0' TVD</b>									
12,740.9	1.34	250.00	12,470.0	-180.6	1,904.2	1,912.8	0.00	0.00	0.00

<b>Database:</b>	EDM 5000.1 Single User Db	<b>Local Co-ordinate Reference:</b>	Well BJU M23A FED 24D-23 496 - Slot 24D-23
<b>Company:</b>	Caerus Oil & Gas	<b>TVD Reference:</b>	RKB @ 8134.0usft (30')
<b>Project:</b>	Garfield County, CO	<b>MD Reference:</b>	RKB @ 8134.0usft (30')
<b>Site:</b>	BJU M23A 496 Pad	<b>North Reference:</b>	True
<b>Well:</b>	BJU M23A FED 24D-23 496	<b>Survey Calculation Method:</b>	Minimum Curvature
<b>Wellbore:</b>	Wellbore #1		
<b>Design:</b>	Design #2		

**Design Targets**

Target Name - hit/miss target - Shape	Dip Angle (°)	Dip Dir. (°)	TVD (usft)	+N/-S (usft)	+E/-W (usft)	Northing (usft)	Easting (usft)	Latitude	Longitude
OHCR - 24D-23 - plan hits target center - Point	0.00	0.00	8,153.0	-146.4	1,998.2	14,423,841.78	2,447,086.83	39.683910	-108.133034
PBHL - 24D-23 - plan hits target center - Ellipse (radii L100.0 W50.0 on 250.00 azi)	0.00	0.00	12,470.0	-180.6	1,904.2	14,423,804.60	2,446,994.00	39.683817	-108.133368

**Formations**

Measured Depth (usft)	Vertical Depth (usft)	Name	Lithology	Dip (°)	Dip Direction (°)
3,594.5	3,492.0	Wasatch			
6,087.5	5,892.0	Wasatch G			
6,399.2	6,192.0	Fort Union			
8,422.7	8,153.0	Ohio Creek			
8,422.7	8,153.0	TOG			
8,821.8	8,552.0	William Fork			
11,740.6	11,470.0	Cameo			
12,240.7	11,970.0	Rollins			

**Plan Annotations**

Measured Depth (usft)	Vertical Depth (usft)	Local Coordinates		Comment
		+N/-S (usft)	+E/-W (usft)	
500.0	500.0	0.0	0.0	Build 3° / 100'
1,023.4	1,016.9	-5.2	71.1	EOB @ 15.70° Inc. / 94.19° Azm
7,899.2	7,636.1	-141.2	1,927.1	Drop 3° / 100'
8,422.7	8,153.0	-146.4	1,998.2	EOD @ Vertical / Build 1.5° / 100'
8,512.1	8,242.4	-146.8	1,997.2	EOB @ 1.34° Inc. / 250.00° Azm
12,740.9	12,470.0	-180.6	1,904.2	TD @ 12740.9' MD / 12470.0' TVD