

Project: Garfield County, CO  
Site: BJU M23A 496 Pad  
Well: BJU M23A FED 21B-26 496  
Wellbore: Wellbore #1  
Design: Design #2  
Latitude: 39.684098  
Longitude: -108.140206  
Ground Level: 8104.0  
RKB @ 8134.0usft (30')

PROJECT DETAILS: Garfield County, CO

Geodetic System: Universal Transverse Mercator (US Survey Feet)  
Datum: NAD 1927 - Western US  
Ellipsoid: Clarke 1866  
Zone: Zone 12N (114 W to 108 W)  
System Datum: Mean Sea Level

REFERENCE INFORMATION

Vertical (TVD) Reference: RKB @ 8134.0usft (30')  
Section (VS) Reference: Slot - 21B-26(0.0N, 0.0E)  
Measured Depth Reference: RKB @ 8134.0usft (30')  
Calculation Method: Minimum Curvature

FORMATION TOP DETAILS

TVDPath	MDPath	Formation
3390.0	3554.5	Wasatch
5790.0	6116.5	Wasatch G
6090.0	6436.8	Fort Union
8074.0	8524.1	Ohio Creek
8074.0	8524.1	TOG
8419.0	8869.2	William Fork
11372.0	11823.0	Cameo
11872.0	12323.1	Rollins

SECTION DETAILS

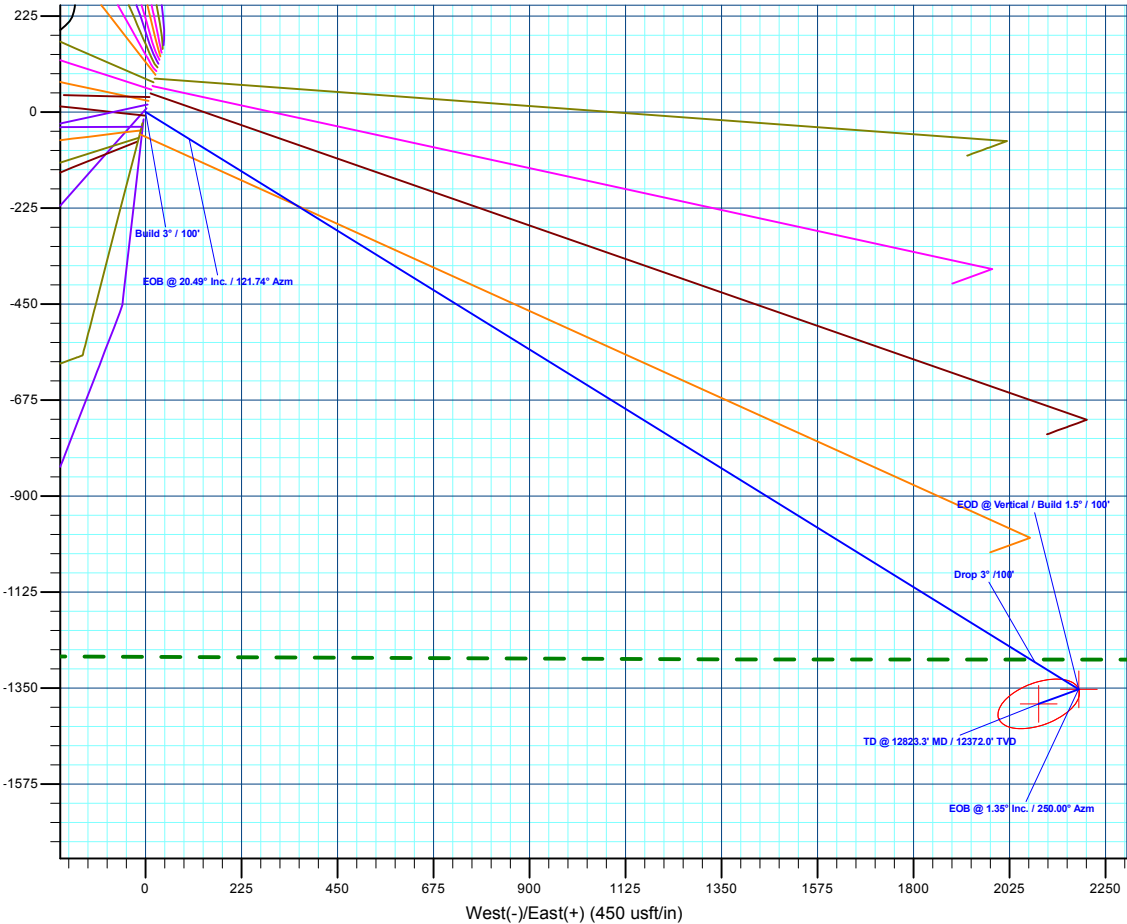
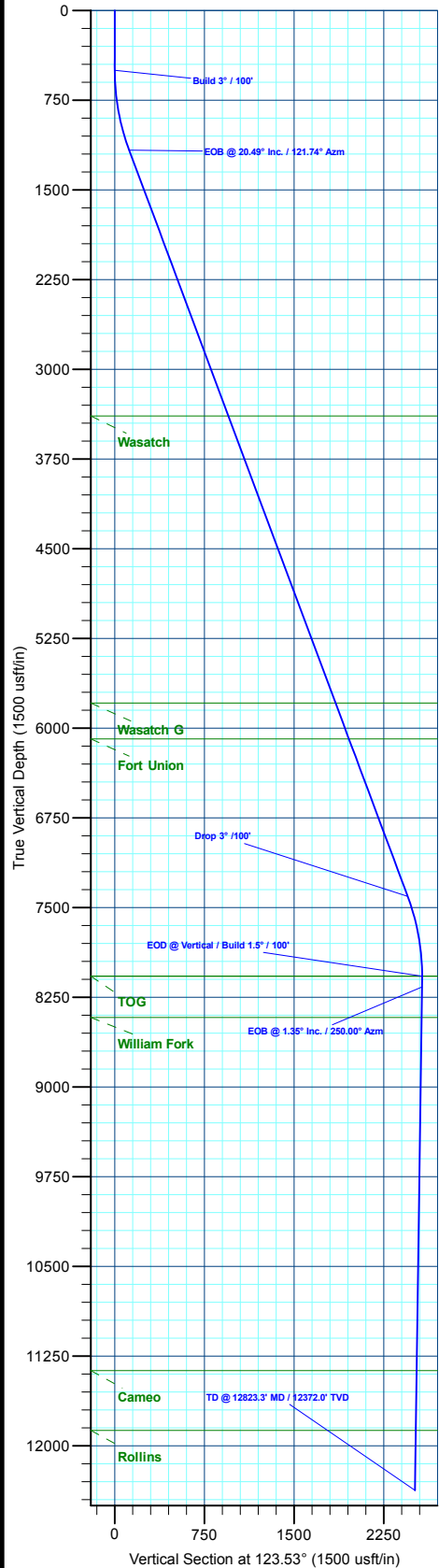
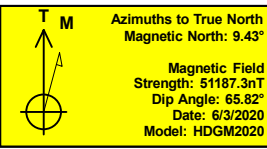
MD	Inc	Azi	TVD	+N/-S	+E/-W	Dieg	TFace	VSect	Annotation
0.0	0.00	0.00	0.0	0.0	0.0	0.00	0.00	0.0	
500.0	0.00	0.00	500.0	0.0	0.0	0.00	0.00	0.0	Build 3° / 100'
1182.9	20.49	121.74	1168.5	-63.6	102.7	3.00	121.74	120.8	EOB @ 20.49° Inc. / 121.74° Azm
7841.2	20.49	121.74	7405.5	-1289.6	2084.7	0.00	0.00	2450.1	Drop 3° / 100'
8524.1	0.00	0.00	8074.0	-1353.2	2187.4	3.00	180.00	2570.8	EOD @ Vertical / Build 1.5° / 100'
8613.9	1.35	250.00	8163.8	-1353.5	2186.4	1.50	250.00	2570.2	EOB @ 1.35° Inc. / 250.00° Azm
12823.3	1.35	250.00	12372.0	-1387.4	2093.4	0.00	0.00	2511.4	TD @ 12823.3' MD / 12372.0' TVD

DESIGN TARGET DETAILS

Name	TVD	+N/-S	+E/-W	Northing	Easting	Latitude	Longitude
OHCR - 21B-26	8074.0	-1353.2	2187.4	14422562.88	2447295.73	39.680384	-108.132438
PBHL - 21B-26	12372.0	-1387.4	2093.4	14422525.70	2447202.90	39.680290	-108.132771

WELL DETAILS: BJU M23A FED 21B-26 496

+N/-S	+E/-W	Ground Level : 8104.0	Northing	Easting	Latitude	Longitude	
0.0	0.0		14423845.60	2445066.30	39.684098	-108.140206	21B-26



Plan: Design #2 (BJU M23A FED 21B-26 496/Wellbore #1)

Created By: Will Jircik Date: 15:11, July 18 2022



## **Caerus Oil & Gas**

**Garfield County, CO**

**BJU M23A 496 Pad**

**BJU M23A FED 21B-26 496 - Slot 21B-26**

**Wellbore #1**

**Plan: Design #2**

## **KLX Well Planning Report**

**18 July, 2022**



<b>Database:</b>	EDM 5000.1 Single User Db	<b>Local Co-ordinate Reference:</b>	Well BJU M23A FED 21B-26 496 - Slot 21B-26
<b>Company:</b>	Caerus Oil & Gas	<b>TVD Reference:</b>	RKB @ 8134.0usft (30')
<b>Project:</b>	Garfield County, CO	<b>MD Reference:</b>	RKB @ 8134.0usft (30')
<b>Site:</b>	BJU M23A 496 Pad	<b>North Reference:</b>	True
<b>Well:</b>	BJU M23A FED 21B-26 496	<b>Survey Calculation Method:</b>	Minimum Curvature
<b>Wellbore:</b>	Wellbore #1		
<b>Design:</b>	Design #2		

<b>Project</b>	Garfield County, CO		
<b>Map System:</b>	Universal Transverse Mercator (US Survey Fee	<b>System Datum:</b>	Mean Sea Level
<b>Geo Datum:</b>	NAD 1927 - Western US		
<b>Map Zone:</b>	Zone 12N (114 W to 108 W)		

<b>Site</b>	BJU M23A 496 Pad		
<b>Site Position:</b>		<b>Northing:</b>	14,424,028.50 usft
<b>From:</b>	Map	<b>Easting:</b>	2,445,109.60 usft
<b>Position Uncertainty:</b>	0.0 usft	<b>Slot Radius:</b>	13-3/16 "
		<b>Latitude:</b>	39.684596
		<b>Longitude:</b>	-108.140032
		<b>Grid Convergence:</b>	1.83 °

<b>Well</b>	BJU M23A FED 21B-26 496 - Slot 21B-26		
<b>Well Position</b>	<b>+N/-S</b>	-181.4 usft	<b>Northing:</b> 14,423,845.60 usft
	<b>+E/-W</b>	-49.1 usft	<b>Easting:</b> 2,445,066.30 usft
<b>Position Uncertainty</b>	0.0 usft	<b>Wellhead Elevation:</b>	<b>Latitude:</b> 39.684098
			<b>Longitude:</b> -108.140207
			<b>Ground Level:</b> 8,104.0 usft

<b>Wellbore</b>	Wellbore #1				
<b>Magnetics</b>	<b>Model Name</b>	<b>Sample Date</b>	<b>Declination (°)</b>	<b>Dip Angle (°)</b>	<b>Field Strength (nT)</b>
	HDGM2020	6/3/2020	9.43	65.82	51,187.30000000

<b>Design</b>	Design #2				
<b>Audit Notes:</b>					
<b>Version:</b>	<b>Phase:</b>	PLAN	<b>Tie On Depth:</b>	0.0	
<b>Vertical Section:</b>	<b>Depth From (TVD) (usft)</b>	<b>+N/-S (usft)</b>	<b>+E/-W (usft)</b>	<b>Direction (°)</b>	
	0.0	0.0	0.0	123.53	

<b>Plan Sections</b>										
Measured Depth (usft)	Inclination (°)	Azimuth (°)	Vertical Depth (usft)	+N/-S (usft)	+E/-W (usft)	Dogleg Rate (°/100usft)	Build Rate (°/100usft)	Turn Rate (°/100usft)	TFO (°)	Target
0.0	0.00	0.00	0.0	0.0	0.0	0.00	0.00	0.00	0.00	
500.0	0.00	0.00	500.0	0.0	0.0	0.00	0.00	0.00	0.00	
1,182.9	20.49	121.74	1,168.5	-63.6	102.7	3.00	3.00	0.00	121.74	
7,841.2	20.49	121.74	7,405.5	-1,289.6	2,084.7	0.00	0.00	0.00	0.00	
8,524.1	0.00	0.00	8,074.0	-1,353.2	2,187.4	3.00	-3.00	0.00	180.00	OHCR - 21B-26
8,613.9	1.35	250.00	8,163.8	-1,353.5	2,186.4	1.50	1.50	-122.50	250.00	
12,823.3	1.35	250.00	12,372.0	-1,387.4	2,093.4	0.00	0.00	0.00	0.00	PBHL - 21B-26

<b>Database:</b>	EDM 5000.1 Single User Db	<b>Local Co-ordinate Reference:</b>	Well BJU M23A FED 21B-26 496 - Slot 21B-26
<b>Company:</b>	Caerus Oil & Gas	<b>TVD Reference:</b>	RKB @ 8134.0usft (30')
<b>Project:</b>	Garfield County, CO	<b>MD Reference:</b>	RKB @ 8134.0usft (30')
<b>Site:</b>	BJU M23A 496 Pad	<b>North Reference:</b>	True
<b>Well:</b>	BJU M23A FED 21B-26 496	<b>Survey Calculation Method:</b>	Minimum Curvature
<b>Wellbore:</b>	Wellbore #1		
<b>Design:</b>	Design #2		

Planned Survey										
Measured Depth (usft)	Inclination (°)	Azimuth (°)	Vertical Depth (usft)	+N/-S (usft)	+E/-W (usft)	Vertical Section (usft)	Dogleg Rate (°/100usft)	Build Rate (°/100usft)	Turn Rate (°/100usft)	
0.0	0.00	0.00	0.0	0.0	0.0	0.0	0.00	0.00	0.00	
100.0	0.00	0.00	100.0	0.0	0.0	0.0	0.00	0.00	0.00	
200.0	0.00	0.00	200.0	0.0	0.0	0.0	0.00	0.00	0.00	
300.0	0.00	0.00	300.0	0.0	0.0	0.0	0.00	0.00	0.00	
400.0	0.00	0.00	400.0	0.0	0.0	0.0	0.00	0.00	0.00	
Build 3° / 100'										
500.0	0.00	0.00	500.0	0.0	0.0	0.0	0.00	0.00	0.00	
600.0	3.00	121.74	600.0	-1.4	2.2	2.6	3.00	3.00	0.00	
700.0	6.00	121.74	699.6	-5.5	8.9	10.5	3.00	3.00	0.00	
800.0	9.00	121.74	798.8	-12.4	20.0	23.5	3.00	3.00	0.00	
900.0	12.00	121.74	897.1	-22.0	35.5	41.7	3.00	3.00	0.00	
1,000.0	15.00	121.74	994.3	-34.2	55.3	65.0	3.00	3.00	0.00	
1,100.0	18.00	121.74	1,090.2	-49.2	79.5	93.4	3.00	3.00	0.00	
EOB @ 20.49° Inc. / 121.74° Azm										
1,182.9	20.49	121.74	1,168.5	-63.6	102.7	120.8	3.00	3.00	0.00	
1,200.0	20.49	121.74	1,184.5	-66.7	107.8	126.7	0.00	0.00	0.00	
1,300.0	20.49	121.74	1,278.1	-85.1	137.6	161.7	0.00	0.00	0.00	
1,400.0	20.49	121.74	1,371.8	-103.5	167.4	196.7	0.00	0.00	0.00	
1,500.0	20.49	121.74	1,465.5	-121.9	197.1	231.7	0.00	0.00	0.00	
1,600.0	20.49	121.74	1,559.2	-140.4	226.9	266.7	0.00	0.00	0.00	
1,700.0	20.49	121.74	1,652.8	-158.8	256.7	301.6	0.00	0.00	0.00	
1,800.0	20.49	121.74	1,746.5	-177.2	286.4	336.6	0.00	0.00	0.00	
1,900.0	20.49	121.74	1,840.2	-195.6	316.2	371.6	0.00	0.00	0.00	
2,000.0	20.49	121.74	1,933.9	-214.0	346.0	406.6	0.00	0.00	0.00	
2,100.0	20.49	121.74	2,027.5	-232.4	375.7	441.6	0.00	0.00	0.00	
2,200.0	20.49	121.74	2,121.2	-250.8	405.5	476.6	0.00	0.00	0.00	
2,300.0	20.49	121.74	2,214.9	-269.3	435.2	511.5	0.00	0.00	0.00	
2,400.0	20.49	121.74	2,308.6	-287.7	465.0	546.5	0.00	0.00	0.00	
2,500.0	20.49	121.74	2,402.2	-306.1	494.8	581.5	0.00	0.00	0.00	
2,600.0	20.49	121.74	2,495.9	-324.5	524.5	616.5	0.00	0.00	0.00	
2,700.0	20.49	121.74	2,589.6	-342.9	554.3	651.5	0.00	0.00	0.00	
2,800.0	20.49	121.74	2,683.2	-361.3	584.1	686.5	0.00	0.00	0.00	
2,900.0	20.49	121.74	2,776.9	-379.7	613.8	721.5	0.00	0.00	0.00	
3,000.0	20.49	121.74	2,870.6	-398.1	643.6	756.4	0.00	0.00	0.00	
3,100.0	20.49	121.74	2,964.3	-416.6	673.4	791.4	0.00	0.00	0.00	
3,200.0	20.49	121.74	3,057.9	-435.0	703.1	826.4	0.00	0.00	0.00	
3,300.0	20.49	121.74	3,151.6	-453.4	732.9	861.4	0.00	0.00	0.00	
3,400.0	20.49	121.74	3,245.3	-471.8	762.7	896.4	0.00	0.00	0.00	
3,500.0	20.49	121.74	3,339.0	-490.2	792.4	931.4	0.00	0.00	0.00	
Wasatch										
3,554.5	20.49	121.74	3,390.0	-500.2	808.7	950.4	0.00	0.00	0.00	
3,600.0	20.49	121.74	3,432.6	-508.6	822.2	966.3	0.00	0.00	0.00	
3,700.0	20.49	121.74	3,526.3	-527.0	852.0	1,001.3	0.00	0.00	0.00	
3,800.0	20.49	121.74	3,620.0	-545.5	881.7	1,036.3	0.00	0.00	0.00	
3,900.0	20.49	121.74	3,713.7	-563.9	911.5	1,071.3	0.00	0.00	0.00	
4,000.0	20.49	121.74	3,807.3	-582.3	941.3	1,106.3	0.00	0.00	0.00	
4,100.0	20.49	121.74	3,901.0	-600.7	971.0	1,141.3	0.00	0.00	0.00	
4,200.0	20.49	121.74	3,994.7	-619.1	1,000.8	1,176.3	0.00	0.00	0.00	
4,300.0	20.49	121.74	4,088.4	-637.5	1,030.6	1,211.2	0.00	0.00	0.00	
4,400.0	20.49	121.74	4,182.0	-655.9	1,060.3	1,246.2	0.00	0.00	0.00	
4,500.0	20.49	121.74	4,275.7	-674.4	1,090.1	1,281.2	0.00	0.00	0.00	
4,600.0	20.49	121.74	4,369.4	-692.8	1,119.9	1,316.2	0.00	0.00	0.00	
4,700.0	20.49	121.74	4,463.1	-711.2	1,149.6	1,351.2	0.00	0.00	0.00	

<b>Database:</b>	EDM 5000.1 Single User Db	<b>Local Co-ordinate Reference:</b>	Well BJU M23A FED 21B-26 496 - Slot 21B-26
<b>Company:</b>	Caerus Oil & Gas	<b>TVD Reference:</b>	RKB @ 8134.0usft (30')
<b>Project:</b>	Garfield County, CO	<b>MD Reference:</b>	RKB @ 8134.0usft (30')
<b>Site:</b>	BJU M23A 496 Pad	<b>North Reference:</b>	True
<b>Well:</b>	BJU M23A FED 21B-26 496	<b>Survey Calculation Method:</b>	Minimum Curvature
<b>Wellbore:</b>	Wellbore #1		
<b>Design:</b>	Design #2		

## Planned Survey

Measured Depth (usft)	Inclination (°)	Azimuth (°)	Vertical Depth (usft)	+N/-S (usft)	+E/-W (usft)	Vertical Section (usft)	Dogleg Rate (°/100usft)	Build Rate (°/100usft)	Turn Rate (°/100usft)
4,800.0	20.49	121.74	4,556.7	-729.6	1,179.4	1,386.2	0.00	0.00	0.00
4,900.0	20.49	121.74	4,650.4	-748.0	1,209.2	1,421.1	0.00	0.00	0.00
5,000.0	20.49	121.74	4,744.1	-766.4	1,238.9	1,456.1	0.00	0.00	0.00
5,100.0	20.49	121.74	4,837.8	-784.8	1,268.7	1,491.1	0.00	0.00	0.00
5,200.0	20.49	121.74	4,931.4	-803.3	1,298.5	1,526.1	0.00	0.00	0.00
5,300.0	20.49	121.74	5,025.1	-821.7	1,328.2	1,561.1	0.00	0.00	0.00
5,400.0	20.49	121.74	5,118.8	-840.1	1,358.0	1,596.1	0.00	0.00	0.00
5,500.0	20.49	121.74	5,212.5	-858.5	1,387.8	1,631.1	0.00	0.00	0.00
5,600.0	20.49	121.74	5,306.1	-876.9	1,417.5	1,666.0	0.00	0.00	0.00
5,700.0	20.49	121.74	5,399.8	-895.3	1,447.3	1,701.0	0.00	0.00	0.00
5,800.0	20.49	121.74	5,493.5	-913.7	1,477.1	1,736.0	0.00	0.00	0.00
5,900.0	20.49	121.74	5,587.2	-932.2	1,506.8	1,771.0	0.00	0.00	0.00
6,000.0	20.49	121.74	5,680.8	-950.6	1,536.6	1,806.0	0.00	0.00	0.00
6,100.0	20.49	121.74	5,774.5	-969.0	1,566.4	1,841.0	0.00	0.00	0.00
<b>Wasatch G</b>									
6,116.5	20.49	121.74	5,790.0	-972.0	1,571.3	1,846.7	0.00	0.00	0.00
6,200.0	20.49	121.74	5,868.2	-987.4	1,596.1	1,875.9	0.00	0.00	0.00
6,300.0	20.49	121.74	5,961.9	-1,005.8	1,625.9	1,910.9	0.00	0.00	0.00
6,400.0	20.49	121.74	6,055.5	-1,024.2	1,655.7	1,945.9	0.00	0.00	0.00
<b>Fort Union</b>									
6,436.8	20.49	121.74	6,090.0	-1,031.0	1,666.6	1,958.8	0.00	0.00	0.00
6,500.0	20.49	121.74	6,149.2	-1,042.6	1,685.4	1,980.9	0.00	0.00	0.00
6,600.0	20.49	121.74	6,242.9	-1,061.0	1,715.2	2,015.9	0.00	0.00	0.00
6,700.0	20.49	121.74	6,336.5	-1,079.5	1,745.0	2,050.9	0.00	0.00	0.00
6,800.0	20.49	121.74	6,430.2	-1,097.9	1,774.7	2,085.9	0.00	0.00	0.00
6,900.0	20.49	121.74	6,523.9	-1,116.3	1,804.5	2,120.8	0.00	0.00	0.00
7,000.0	20.49	121.74	6,617.6	-1,134.7	1,834.3	2,155.8	0.00	0.00	0.00
7,100.0	20.49	121.74	6,711.2	-1,153.1	1,864.0	2,190.8	0.00	0.00	0.00
7,200.0	20.49	121.74	6,804.9	-1,171.5	1,893.8	2,225.8	0.00	0.00	0.00
7,300.0	20.49	121.74	6,898.6	-1,189.9	1,923.6	2,260.8	0.00	0.00	0.00
7,400.0	20.49	121.74	6,992.3	-1,208.4	1,953.3	2,295.8	0.00	0.00	0.00
7,500.0	20.49	121.74	7,085.9	-1,226.8	1,983.1	2,330.7	0.00	0.00	0.00
7,600.0	20.49	121.74	7,179.6	-1,245.2	2,012.9	2,365.7	0.00	0.00	0.00
7,700.0	20.49	121.74	7,273.3	-1,263.6	2,042.6	2,400.7	0.00	0.00	0.00
7,800.0	20.49	121.74	7,367.0	-1,282.0	2,072.4	2,435.7	0.00	0.00	0.00
<b>Drop 3° /100'</b>									
7,841.2	20.49	121.74	7,405.5	-1,289.6	2,084.7	2,450.1	0.00	0.00	0.00
7,900.0	18.72	121.74	7,460.9	-1,300.0	2,101.4	2,469.8	3.00	-3.00	0.00
8,000.0	15.72	121.74	7,556.5	-1,315.6	2,126.6	2,499.4	3.00	-3.00	0.00
8,100.0	12.72	121.74	7,653.4	-1,328.5	2,147.5	2,524.0	3.00	-3.00	0.00
8,200.0	9.72	121.74	7,751.5	-1,338.7	2,164.1	2,543.4	3.00	-3.00	0.00
8,300.0	6.72	121.74	7,850.4	-1,346.2	2,176.2	2,557.7	3.00	-3.00	0.00
8,400.0	3.72	121.74	7,950.0	-1,351.0	2,184.0	2,566.8	3.00	-3.00	0.00
8,500.0	0.72	121.74	8,049.9	-1,353.1	2,187.3	2,570.7	3.00	-3.00	0.00
<b>EOD @ Vertical / Build 1.5° / 100' - Ohio Creek - TOG</b>									
8,524.1	0.00	0.00	8,074.0	-1,353.2	2,187.4	2,570.8	3.00	-3.00	0.00
8,600.0	1.14	250.00	8,149.9	-1,353.4	2,186.7	2,570.4	1.50	1.50	0.00
<b>EOB @ 1.35° Inc. / 250.00° Azm</b>									
8,613.9	1.35	250.00	8,163.8	-1,353.5	2,186.4	2,570.2	1.50	1.50	0.00
8,700.0	1.35	250.00	8,249.9	-1,354.2	2,184.5	2,569.0	0.00	0.00	0.00
8,800.0	1.35	250.00	8,349.8	-1,355.0	2,182.3	2,567.6	0.00	0.00	0.00
<b>William Fork</b>									

<b>Database:</b>	EDM 5000.1 Single User Db	<b>Local Co-ordinate Reference:</b>	Well BJU M23A FED 21B-26 496 - Slot 21B-26
<b>Company:</b>	Caerus Oil & Gas	<b>TVD Reference:</b>	RKB @ 8134.0usft (30')
<b>Project:</b>	Garfield County, CO	<b>MD Reference:</b>	RKB @ 8134.0usft (30')
<b>Site:</b>	BJU M23A 496 Pad	<b>North Reference:</b>	True
<b>Well:</b>	BJU M23A FED 21B-26 496	<b>Survey Calculation Method:</b>	Minimum Curvature
<b>Wellbore:</b>	Wellbore #1		
<b>Design:</b>	Design #2		

## Planned Survey

Measured Depth (usft)	Inclination (°)	Azimuth (°)	Vertical Depth (usft)	+N/-S (usft)	+E/-W (usft)	Vertical Section (usft)	Dogleg Rate (°/100usft)	Build Rate (°/100usft)	Turn Rate (°/100usft)
8,869.2	1.35	250.00	8,419.0	-1,355.6	2,180.8	2,566.7	0.00	0.00	0.00
8,900.0	1.35	250.00	8,449.8	-1,355.8	2,180.1	2,566.2	0.00	0.00	0.00
9,000.0	1.35	250.00	8,549.8	-1,356.6	2,177.9	2,564.8	0.00	0.00	0.00
9,100.0	1.35	250.00	8,649.8	-1,357.4	2,175.7	2,563.4	0.00	0.00	0.00
9,200.0	1.35	250.00	8,749.7	-1,358.2	2,173.5	2,562.0	0.00	0.00	0.00
9,300.0	1.35	250.00	8,849.7	-1,359.0	2,171.3	2,560.6	0.00	0.00	0.00
9,400.0	1.35	250.00	8,949.7	-1,359.8	2,169.0	2,559.2	0.00	0.00	0.00
9,500.0	1.35	250.00	9,049.6	-1,360.6	2,166.8	2,557.8	0.00	0.00	0.00
9,600.0	1.35	250.00	9,149.6	-1,361.4	2,164.6	2,556.4	0.00	0.00	0.00
9,700.0	1.35	250.00	9,249.6	-1,362.2	2,162.4	2,555.0	0.00	0.00	0.00
9,800.0	1.35	250.00	9,349.6	-1,363.0	2,160.2	2,553.7	0.00	0.00	0.00
9,900.0	1.35	250.00	9,449.5	-1,363.9	2,158.0	2,552.3	0.00	0.00	0.00
10,000.0	1.35	250.00	9,549.5	-1,364.7	2,155.8	2,550.9	0.00	0.00	0.00
10,100.0	1.35	250.00	9,649.5	-1,365.5	2,153.6	2,549.5	0.00	0.00	0.00
10,200.0	1.35	250.00	9,749.5	-1,366.3	2,151.4	2,548.1	0.00	0.00	0.00
10,300.0	1.35	250.00	9,849.4	-1,367.1	2,149.2	2,546.7	0.00	0.00	0.00
10,400.0	1.35	250.00	9,949.4	-1,367.9	2,147.0	2,545.3	0.00	0.00	0.00
10,500.0	1.35	250.00	10,049.4	-1,368.7	2,144.7	2,543.9	0.00	0.00	0.00
10,600.0	1.35	250.00	10,149.3	-1,369.5	2,142.5	2,542.5	0.00	0.00	0.00
10,700.0	1.35	250.00	10,249.3	-1,370.3	2,140.3	2,541.1	0.00	0.00	0.00
10,800.0	1.35	250.00	10,349.3	-1,371.1	2,138.1	2,539.7	0.00	0.00	0.00
10,900.0	1.35	250.00	10,449.3	-1,371.9	2,135.9	2,538.3	0.00	0.00	0.00
11,000.0	1.35	250.00	10,549.2	-1,372.7	2,133.7	2,536.9	0.00	0.00	0.00
11,100.0	1.35	250.00	10,649.2	-1,373.5	2,131.5	2,535.5	0.00	0.00	0.00
11,200.0	1.35	250.00	10,749.2	-1,374.3	2,129.3	2,534.1	0.00	0.00	0.00
11,300.0	1.35	250.00	10,849.2	-1,375.1	2,127.1	2,532.7	0.00	0.00	0.00
11,400.0	1.35	250.00	10,949.1	-1,375.9	2,124.9	2,531.3	0.00	0.00	0.00
11,500.0	1.35	250.00	11,049.1	-1,376.7	2,122.7	2,529.9	0.00	0.00	0.00
11,600.0	1.35	250.00	11,149.1	-1,377.5	2,120.4	2,528.5	0.00	0.00	0.00
11,700.0	1.35	250.00	11,249.0	-1,378.3	2,118.2	2,527.1	0.00	0.00	0.00
11,800.0	1.35	250.00	11,349.0	-1,379.1	2,116.0	2,525.7	0.00	0.00	0.00
<b>Cameo</b>									
11,823.0	1.35	250.00	11,372.0	-1,379.3	2,115.5	2,525.4	0.00	0.00	0.00
11,900.0	1.35	250.00	11,449.0	-1,379.9	2,113.8	2,524.3	0.00	0.00	0.00
12,000.0	1.35	250.00	11,549.0	-1,380.7	2,111.6	2,522.9	0.00	0.00	0.00
12,100.0	1.35	250.00	11,648.9	-1,381.5	2,109.4	2,521.5	0.00	0.00	0.00
12,200.0	1.35	250.00	11,748.9	-1,382.3	2,107.2	2,520.1	0.00	0.00	0.00
12,300.0	1.35	250.00	11,848.9	-1,383.1	2,105.0	2,518.7	0.00	0.00	0.00
<b>Rollins</b>									
12,323.1	1.35	250.00	11,872.0	-1,383.3	2,104.5	2,518.4	0.00	0.00	0.00
12,400.0	1.35	250.00	11,948.8	-1,384.0	2,102.8	2,517.3	0.00	0.00	0.00
12,500.0	1.35	250.00	12,048.8	-1,384.8	2,100.6	2,515.9	0.00	0.00	0.00
12,600.0	1.35	250.00	12,148.8	-1,385.6	2,098.4	2,514.5	0.00	0.00	0.00
12,700.0	1.35	250.00	12,248.8	-1,386.4	2,096.2	2,513.1	0.00	0.00	0.00
12,800.0	1.35	250.00	12,348.7	-1,387.2	2,093.9	2,511.7	0.00	0.00	0.00
<b>TD @ 12823.3' MD / 12372.0' TVD</b>									
12,823.3	1.35	250.00	12,372.0	-1,387.4	2,093.4	2,511.4	0.00	0.00	0.00

<b>Database:</b>	EDM 5000.1 Single User Db	<b>Local Co-ordinate Reference:</b>	Well BJU M23A FED 21B-26 496 - Slot 21B-26
<b>Company:</b>	Caerus Oil & Gas	<b>TVD Reference:</b>	RKB @ 8134.0usft (30')
<b>Project:</b>	Garfield County, CO	<b>MD Reference:</b>	RKB @ 8134.0usft (30')
<b>Site:</b>	BJU M23A 496 Pad	<b>North Reference:</b>	True
<b>Well:</b>	BJU M23A FED 21B-26 496	<b>Survey Calculation Method:</b>	Minimum Curvature
<b>Wellbore:</b>	Wellbore #1		
<b>Design:</b>	Design #2		

#### Design Targets

##### Target Name

- hit/miss target - Shape	Dip Angle (°)	Dip Dir. (°)	TVD (usft)	+N/-S (usft)	+E/-W (usft)	Northing (usft)	Easting (usft)	Latitude	Longitude
OHCR - 21B-26 - plan hits target center - Point	0.00	0.00	8,074.0	-1,353.2	2,187.4	14,422,562.88	2,447,295.73	39.680384	-108.132438
PBHL - 21B-26 - plan hits target center - Ellipse (radii L100.0 W50.0 on 250.00 azi)	0.00	0.00	12,372.0	-1,387.4	2,093.4	14,422,525.70	2,447,202.90	39.680290	-108.132772

#### Formations

Measured Depth (usft)	Vertical Depth (usft)	Name	Lithology	Dip (°)	Dip Direction (°)
3,554.5	3,390.0	Wasatch			
6,116.5	5,790.0	Wasatch G			
6,436.8	6,090.0	Fort Union			
8,524.1	8,074.0	Ohio Creek			
8,524.1	8,074.0	TOG			
8,869.2	8,419.0	William Fork			
11,823.0	11,372.0	Cameo			
12,323.1	11,872.0	Rollins			

#### Plan Annotations

Measured Depth (usft)	Vertical Depth (usft)	Local Coordinates		Comment
		+N/-S (usft)	+E/-W (usft)	
500.0	500.0	0.0	0.0	Build 3° / 100'
1,182.9	1,168.5	-63.6	102.7	EOB @ 20.49° Inc. / 121.74° Azm
7,841.2	7,405.5	-1,289.6	2,084.7	Drop 3° / 100'
8,524.1	8,074.0	-1,353.2	2,187.4	EOD @ Vertical / Build 1.5° / 100'
8,613.9	8,163.8	-1,353.5	2,186.4	EOB @ 1.35° Inc. / 250.00° Azm
12,823.3	12,372.0	-1,387.4	2,093.4	TD @ 12823.3' MD / 12372.0' TVD