

Project: Garfield County, CO  
Site: BJU M23A 496 Pad  
Well: BJU M23A FED 14D-23 496  
Wellbore: Wellbore #1  
Design: Design #2  
Latitude: 39.684193  
Longitude: -108.140173  
Ground Level: 8104.0  
RKB @ 8134.0usft (30')

PROJECT DETAILS: Garfield County, CO  
Geodetic System: Universal Transverse Mercator (US Survey Feet)  
Datum: NAD 1927 - Western US  
Ellipsoid: Clarke 1866  
Zone: Zone 12N (114 W to 108 W)  
System Datum: Mean Sea Level

REFERENCE INFORMATION  
Vertical (TVD) Reference: RKB @ 8134.0usft (30')  
Section (VS) Reference: Slot - 14D-23(0.0N, 0.0E)  
Measured Depth Reference: RKB @ 8134.0usft (30')  
Calculation Method: Minimum Curvature

FORMATION TOP DETAILS

TVDPath	MDPath	Formation
3367.0	3367.0	Wasatch
5767.0	5767.0	Wasatch G
6067.0	6067.0	Fort Union
8087.0	8102.8	Ohio Creek
8087.0	8102.8	TOG
8454.0	8469.9	William Fork
11312.0	11328.7	Cameo
11812.0	11828.9	Rollins

SECTION DETAILS

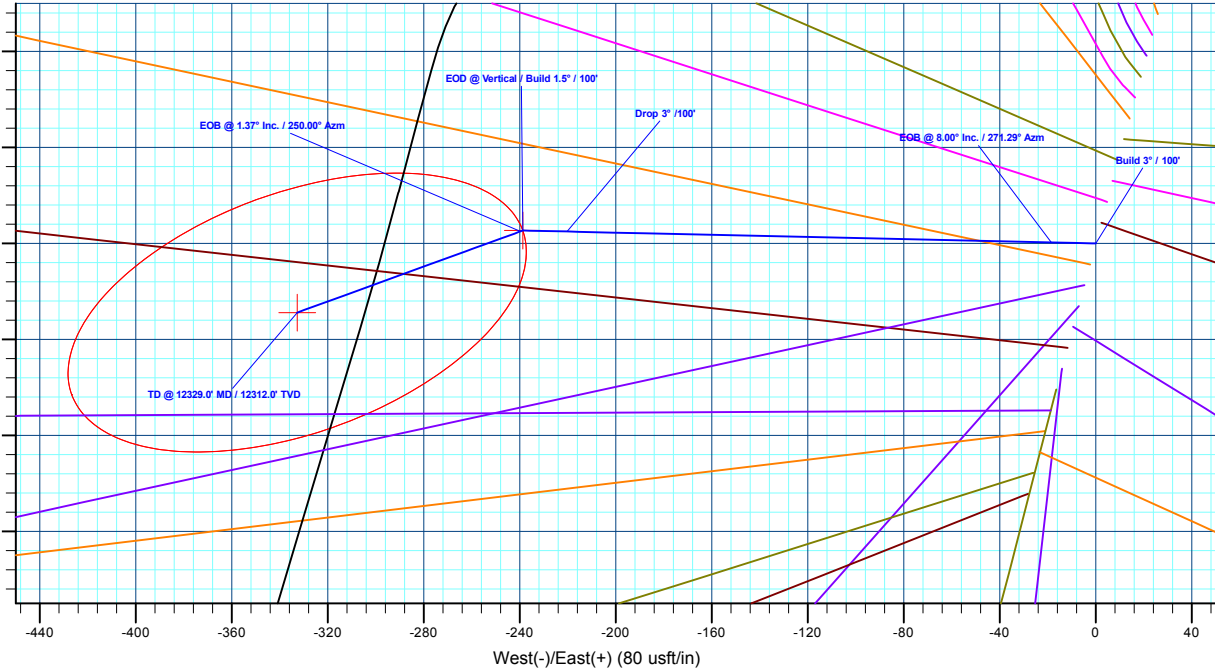
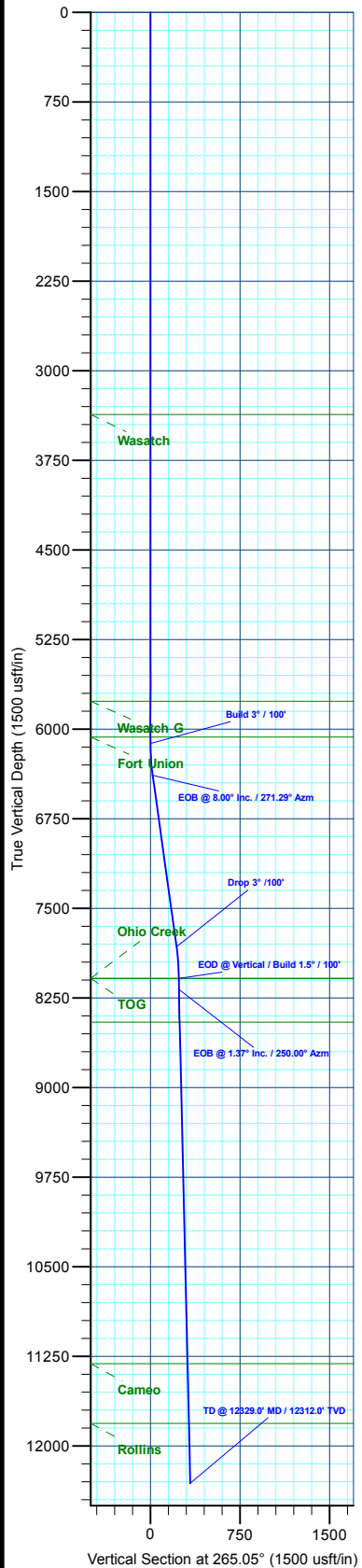
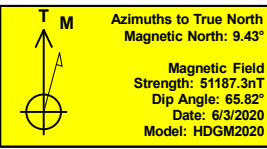
MD	Inc	Azi	TVD	+N/-S	+E/-W	Dieg	TFace	VSect	Annotation
0.0	0.00	0.00	0.0	0.0	0.0	0.00	0.00	0.0	
6120.0	0.00	0.00	6120.0	0.0	0.0	0.00	0.00	0.0	Build 3° / 100'
6386.5	8.00	271.29	6386.6	0.4	-18.6	3.00	271.29	18.5	EOB @ 8.00° Inc. / 271.29° Azm
7836.3	8.00	271.29	7821.4	5.0	-220.2	0.00	0.00	218.9	Drop 3° / 100'
8102.8	0.00	0.00	8087.0	5.4	-238.7	3.00	180.00	237.4	EOD @ Vertical / Build 1.5° / 100'
8194.2	1.37	250.00	8178.4	5.0	-239.7	1.50	250.00	238.4	EOB @ 1.37° Inc. / 250.00° Azm
12329.0	1.37	250.00	12312.0	-28.8	-332.7	0.00	0.00	333.9	TD @ 12329.0' MD / 12312.0' TVD

DESIGN TARGET DETAILS

Name	TVD	+N/-S	+E/-W	Northing	Easting	Latitude	Longitude
OHCR - 14D-23	8087.0	5.4	-238.7	14423878.38	2444835.83	39.684208	-108.141021
PBHL - 14D-23	12312.0	-28.8	-332.7	14423841.20	2444743.00	39.684114	-108.141354

WELL DETAILS: BJU M23A FED 14D-23 496

+N/-S	+E/-W	Ground Level : 8104.0	Northing	Easting	Latitude	Longitude
0.0	0.0		14423880.60	2445074.60	39.684193	-108.140173
						14D-23



Plan: Design #2 (BJU M23A FED 14D-23 496/Wellbore #1)

Created By: Will Jircik Date: 14:55, July 18 2022



## **Caerus Oil & Gas**

**Garfield County, CO**

**BJU M23A 496 Pad**

**BJU M23A FED 14D-23 496 - Slot 14D-23**

**Wellbore #1**

**Plan: Design #2**

## **KLX Well Planning Report**

**18 July, 2022**



<b>Database:</b>	EDM 5000.1 Single User Db	<b>Local Co-ordinate Reference:</b>	Well BJU M23A FED 14D-23 496 - Slot 14D-23
<b>Company:</b>	Caerus Oil & Gas	<b>TVD Reference:</b>	RKB @ 8134.0usft (30')
<b>Project:</b>	Garfield County, CO	<b>MD Reference:</b>	RKB @ 8134.0usft (30')
<b>Site:</b>	BJU M23A 496 Pad	<b>North Reference:</b>	True
<b>Well:</b>	BJU M23A FED 14D-23 496	<b>Survey Calculation Method:</b>	Minimum Curvature
<b>Wellbore:</b>	Wellbore #1		
<b>Design:</b>	Design #2		

<b>Project</b>	Garfield County, CO		
<b>Map System:</b>	Universal Transverse Mercator (US Survey Fee	<b>System Datum:</b>	Mean Sea Level
<b>Geo Datum:</b>	NAD 1927 - Western US		
<b>Map Zone:</b>	Zone 12N (114 W to 108 W)		

<b>Site</b>	BJU M23A 496 Pad		
<b>Site Position:</b>		<b>Northing:</b>	14,424,028.50 usft
<b>From:</b>	Map	<b>Easting:</b>	2,445,109.60 usft
<b>Position Uncertainty:</b>	0.0 usft	<b>Slot Radius:</b>	13-3/16 "
		<b>Latitude:</b>	39.684596
		<b>Longitude:</b>	-108.140032
		<b>Grid Convergence:</b>	1.83 °

<b>Well</b>	BJU M23A FED 14D-23 496 - Slot 14D-23		
<b>Well Position</b>	<b>+N/-S</b>	-146.7 usft	<b>Northing:</b> 14,423,880.60 usft
	<b>+E/-W</b>	-39.7 usft	<b>Easting:</b> 2,445,074.60 usft
<b>Position Uncertainty</b>	0.0 usft	<b>Wellhead Elevation:</b>	<b>Latitude:</b> 39.684193
			<b>Longitude:</b> -108.140173
			<b>Ground Level:</b> 8,104.0 usft

<b>Wellbore</b>	Wellbore #1				
<b>Magnetics</b>	<b>Model Name</b>	<b>Sample Date</b>	<b>Declination (°)</b>	<b>Dip Angle (°)</b>	<b>Field Strength (nT)</b>
	HDGM2020	6/3/2020	9.43	65.82	51,187.30000000

<b>Design</b>	Design #2				
<b>Audit Notes:</b>					
<b>Version:</b>	<b>Phase:</b>	PLAN	<b>Tie On Depth:</b>	0.0	
<b>Vertical Section:</b>	<b>Depth From (TVD) (usft)</b>	<b>+N/-S (usft)</b>	<b>+E/-W (usft)</b>	<b>Direction (°)</b>	
	0.0	0.0	0.0	265.05	

Plan Sections										
Measured Depth (usft)	Inclination (°)	Azimuth (°)	Vertical Depth (usft)	+N/-S (usft)	+E/-W (usft)	Dogleg Rate (°/100usft)	Build Rate (°/100usft)	Turn Rate (°/100usft)	TFO (°)	Target
0.0	0.00	0.00	0.0	0.0	0.0	0.00	0.00	0.00	0.00	
6,120.0	0.00	0.00	6,120.0	0.0	0.0	0.00	0.00	0.00	0.00	
6,386.5	8.00	271.29	6,385.6	0.4	-18.6	3.00	3.00	0.00	271.29	
7,836.3	8.00	271.29	7,821.4	5.0	-220.2	0.00	0.00	0.00	0.00	
8,102.8	0.00	0.00	8,087.0	5.4	-238.7	3.00	-3.00	0.00	180.00	OHCR - 14D-23
8,194.2	1.37	250.00	8,178.4	5.0	-239.7	1.50	1.50	-120.38	250.00	
12,329.0	1.37	250.00	12,312.0	-28.8	-332.7	0.00	0.00	0.00	0.00	PBHL - 14D-23

<b>Database:</b>	EDM 5000.1 Single User Db	<b>Local Co-ordinate Reference:</b>	Well BJU M23A FED 14D-23 496 - Slot 14D-23
<b>Company:</b>	Caerus Oil & Gas	<b>TVD Reference:</b>	RKB @ 8134.0usft (30')
<b>Project:</b>	Garfield County, CO	<b>MD Reference:</b>	RKB @ 8134.0usft (30')
<b>Site:</b>	BJU M23A 496 Pad	<b>North Reference:</b>	True
<b>Well:</b>	BJU M23A FED 14D-23 496	<b>Survey Calculation Method:</b>	Minimum Curvature
<b>Wellbore:</b>	Wellbore #1		
<b>Design:</b>	Design #2		

Planned Survey									
Measured Depth (usft)	Inclination (°)	Azimuth (°)	Vertical Depth (usft)	+N/-S (usft)	+E/-W (usft)	Vertical Section (usft)	Dogleg Rate (°/100usft)	Build Rate (°/100usft)	Turn Rate (°/100usft)
0.0	0.00	0.00	0.0	0.0	0.0	0.0	0.00	0.00	0.00
100.0	0.00	0.00	100.0	0.0	0.0	0.0	0.00	0.00	0.00
200.0	0.00	0.00	200.0	0.0	0.0	0.0	0.00	0.00	0.00
300.0	0.00	0.00	300.0	0.0	0.0	0.0	0.00	0.00	0.00
400.0	0.00	0.00	400.0	0.0	0.0	0.0	0.00	0.00	0.00
500.0	0.00	0.00	500.0	0.0	0.0	0.0	0.00	0.00	0.00
600.0	0.00	0.00	600.0	0.0	0.0	0.0	0.00	0.00	0.00
700.0	0.00	0.00	700.0	0.0	0.0	0.0	0.00	0.00	0.00
800.0	0.00	0.00	800.0	0.0	0.0	0.0	0.00	0.00	0.00
900.0	0.00	0.00	900.0	0.0	0.0	0.0	0.00	0.00	0.00
1,000.0	0.00	0.00	1,000.0	0.0	0.0	0.0	0.00	0.00	0.00
1,100.0	0.00	0.00	1,100.0	0.0	0.0	0.0	0.00	0.00	0.00
1,200.0	0.00	0.00	1,200.0	0.0	0.0	0.0	0.00	0.00	0.00
1,300.0	0.00	0.00	1,300.0	0.0	0.0	0.0	0.00	0.00	0.00
1,400.0	0.00	0.00	1,400.0	0.0	0.0	0.0	0.00	0.00	0.00
1,500.0	0.00	0.00	1,500.0	0.0	0.0	0.0	0.00	0.00	0.00
1,600.0	0.00	0.00	1,600.0	0.0	0.0	0.0	0.00	0.00	0.00
1,700.0	0.00	0.00	1,700.0	0.0	0.0	0.0	0.00	0.00	0.00
1,800.0	0.00	0.00	1,800.0	0.0	0.0	0.0	0.00	0.00	0.00
1,900.0	0.00	0.00	1,900.0	0.0	0.0	0.0	0.00	0.00	0.00
2,000.0	0.00	0.00	2,000.0	0.0	0.0	0.0	0.00	0.00	0.00
2,100.0	0.00	0.00	2,100.0	0.0	0.0	0.0	0.00	0.00	0.00
2,200.0	0.00	0.00	2,200.0	0.0	0.0	0.0	0.00	0.00	0.00
2,300.0	0.00	0.00	2,300.0	0.0	0.0	0.0	0.00	0.00	0.00
2,400.0	0.00	0.00	2,400.0	0.0	0.0	0.0	0.00	0.00	0.00
2,500.0	0.00	0.00	2,500.0	0.0	0.0	0.0	0.00	0.00	0.00
2,600.0	0.00	0.00	2,600.0	0.0	0.0	0.0	0.00	0.00	0.00
2,700.0	0.00	0.00	2,700.0	0.0	0.0	0.0	0.00	0.00	0.00
2,800.0	0.00	0.00	2,800.0	0.0	0.0	0.0	0.00	0.00	0.00
2,900.0	0.00	0.00	2,900.0	0.0	0.0	0.0	0.00	0.00	0.00
3,000.0	0.00	0.00	3,000.0	0.0	0.0	0.0	0.00	0.00	0.00
3,100.0	0.00	0.00	3,100.0	0.0	0.0	0.0	0.00	0.00	0.00
3,200.0	0.00	0.00	3,200.0	0.0	0.0	0.0	0.00	0.00	0.00
3,300.0	0.00	0.00	3,300.0	0.0	0.0	0.0	0.00	0.00	0.00
Wasatch									
3,367.0	0.00	0.00	3,367.0	0.0	0.0	0.0	0.00	0.00	0.00
3,400.0	0.00	0.00	3,400.0	0.0	0.0	0.0	0.00	0.00	0.00
3,500.0	0.00	0.00	3,500.0	0.0	0.0	0.0	0.00	0.00	0.00
3,600.0	0.00	0.00	3,600.0	0.0	0.0	0.0	0.00	0.00	0.00
3,700.0	0.00	0.00	3,700.0	0.0	0.0	0.0	0.00	0.00	0.00
3,800.0	0.00	0.00	3,800.0	0.0	0.0	0.0	0.00	0.00	0.00
3,900.0	0.00	0.00	3,900.0	0.0	0.0	0.0	0.00	0.00	0.00
4,000.0	0.00	0.00	4,000.0	0.0	0.0	0.0	0.00	0.00	0.00
4,100.0	0.00	0.00	4,100.0	0.0	0.0	0.0	0.00	0.00	0.00
4,200.0	0.00	0.00	4,200.0	0.0	0.0	0.0	0.00	0.00	0.00
4,300.0	0.00	0.00	4,300.0	0.0	0.0	0.0	0.00	0.00	0.00
4,400.0	0.00	0.00	4,400.0	0.0	0.0	0.0	0.00	0.00	0.00
4,500.0	0.00	0.00	4,500.0	0.0	0.0	0.0	0.00	0.00	0.00
4,600.0	0.00	0.00	4,600.0	0.0	0.0	0.0	0.00	0.00	0.00
4,700.0	0.00	0.00	4,700.0	0.0	0.0	0.0	0.00	0.00	0.00
4,800.0	0.00	0.00	4,800.0	0.0	0.0	0.0	0.00	0.00	0.00
4,900.0	0.00	0.00	4,900.0	0.0	0.0	0.0	0.00	0.00	0.00
5,000.0	0.00	0.00	5,000.0	0.0	0.0	0.0	0.00	0.00	0.00

<b>Database:</b>	EDM 5000.1 Single User Db	<b>Local Co-ordinate Reference:</b>	Well BJU M23A FED 14D-23 496 - Slot 14D-23
<b>Company:</b>	Caerus Oil & Gas	<b>TVD Reference:</b>	RKB @ 8134.0usft (30')
<b>Project:</b>	Garfield County, CO	<b>MD Reference:</b>	RKB @ 8134.0usft (30')
<b>Site:</b>	BJU M23A 496 Pad	<b>North Reference:</b>	True
<b>Well:</b>	BJU M23A FED 14D-23 496	<b>Survey Calculation Method:</b>	Minimum Curvature
<b>Wellbore:</b>	Wellbore #1		
<b>Design:</b>	Design #2		

Planned Survey										
Measured Depth (usft)	Inclination (°)	Azimuth (°)	Vertical Depth (usft)	+N/-S (usft)	+E/-W (usft)	Vertical Section (usft)	Dogleg Rate (°/100usft)	Build Rate (°/100usft)	Turn Rate (°/100usft)	
5,100.0	0.00	0.00	5,100.0	0.0	0.0	0.0	0.00	0.00	0.00	
5,200.0	0.00	0.00	5,200.0	0.0	0.0	0.0	0.00	0.00	0.00	
5,300.0	0.00	0.00	5,300.0	0.0	0.0	0.0	0.00	0.00	0.00	
5,400.0	0.00	0.00	5,400.0	0.0	0.0	0.0	0.00	0.00	0.00	
5,500.0	0.00	0.00	5,500.0	0.0	0.0	0.0	0.00	0.00	0.00	
5,600.0	0.00	0.00	5,600.0	0.0	0.0	0.0	0.00	0.00	0.00	
5,700.0	0.00	0.00	5,700.0	0.0	0.0	0.0	0.00	0.00	0.00	
Wasatch G										
5,767.0	0.00	0.00	5,767.0	0.0	0.0	0.0	0.00	0.00	0.00	
5,800.0	0.00	0.00	5,800.0	0.0	0.0	0.0	0.00	0.00	0.00	
5,900.0	0.00	0.00	5,900.0	0.0	0.0	0.0	0.00	0.00	0.00	
6,000.0	0.00	0.00	6,000.0	0.0	0.0	0.0	0.00	0.00	0.00	
Fort Union										
6,067.0	0.00	0.00	6,067.0	0.0	0.0	0.0	0.00	0.00	0.00	
6,100.0	0.00	0.00	6,100.0	0.0	0.0	0.0	0.00	0.00	0.00	
Build 3° / 100'										
6,120.0	0.00	0.00	6,120.0	0.0	0.0	0.0	0.00	0.00	0.00	
6,200.0	2.40	271.29	6,200.0	0.0	-1.7	1.7	3.00	3.00	0.00	
6,300.0	5.40	271.29	6,299.7	0.2	-8.5	8.4	3.00	3.00	0.00	
EOB @ 8.00° Inc. / 271.29° Azm										
6,386.5	8.00	271.29	6,385.6	0.4	-18.6	18.5	3.00	3.00	0.00	
6,400.0	8.00	271.29	6,399.0	0.5	-20.4	20.3	0.00	0.00	0.00	
6,500.0	8.00	271.29	6,498.0	0.8	-34.3	34.1	0.00	0.00	0.00	
6,600.0	8.00	271.29	6,597.1	1.1	-48.2	48.0	0.00	0.00	0.00	
6,700.0	8.00	271.29	6,696.1	1.4	-62.2	61.8	0.00	0.00	0.00	
6,800.0	8.00	271.29	6,795.1	1.7	-76.1	75.6	0.00	0.00	0.00	
6,900.0	8.00	271.29	6,894.1	2.0	-90.0	89.5	0.00	0.00	0.00	
7,000.0	8.00	271.29	6,993.2	2.3	-103.9	103.3	0.00	0.00	0.00	
7,100.0	8.00	271.29	7,092.2	2.7	-117.8	117.1	0.00	0.00	0.00	
7,200.0	8.00	271.29	7,191.2	3.0	-131.7	130.9	0.00	0.00	0.00	
7,300.0	8.00	271.29	7,290.3	3.3	-145.6	144.8	0.00	0.00	0.00	
7,400.0	8.00	271.29	7,389.3	3.6	-159.5	158.6	0.00	0.00	0.00	
7,500.0	8.00	271.29	7,488.3	3.9	-173.4	172.4	0.00	0.00	0.00	
7,600.0	8.00	271.29	7,587.3	4.2	-187.3	186.2	0.00	0.00	0.00	
7,700.0	8.00	271.29	7,686.4	4.5	-201.2	200.1	0.00	0.00	0.00	
7,800.0	8.00	271.29	7,785.4	4.9	-215.1	213.9	0.00	0.00	0.00	
Drop 3° /100'										
7,836.3	8.00	271.29	7,821.4	5.0	-220.2	218.9	0.00	0.00	0.00	
7,900.0	6.08	271.29	7,884.6	5.2	-228.0	226.7	3.00	-3.00	0.00	
8,000.0	3.08	271.29	7,984.2	5.3	-236.0	234.6	3.00	-3.00	0.00	
EOD @ Vertical / Build 1.5° / 100' - Ohio Creek - TOG										
8,102.8	0.00	0.00	8,087.0	5.4	-238.7	237.4	3.00	-3.00	0.00	
EOB @ 1.37° Inc. / 250.00° Azm										
8,194.2	1.37	250.00	8,178.4	5.0	-239.7	238.4	1.50	1.50	0.00	
8,200.0	1.37	250.00	8,184.2	5.0	-239.9	238.6	0.00	0.00	0.00	
8,300.0	1.37	250.00	8,284.1	4.2	-242.1	240.9	0.00	0.00	0.00	
8,400.0	1.37	250.00	8,384.1	3.3	-244.4	243.2	0.00	0.00	0.00	
William Fork										
8,469.9	1.37	250.00	8,454.0	2.8	-245.9	244.8	0.00	0.00	0.00	
8,500.0	1.37	250.00	8,484.1	2.5	-246.6	245.5	0.00	0.00	0.00	
8,600.0	1.37	250.00	8,584.1	1.7	-248.9	247.8	0.00	0.00	0.00	
8,700.0	1.37	250.00	8,684.0	0.9	-251.1	250.1	0.00	0.00	0.00	

<b>Database:</b>	EDM 5000.1 Single User Db	<b>Local Co-ordinate Reference:</b>	Well BJU M23A FED 14D-23 496 - Slot 14D-23
<b>Company:</b>	Caerus Oil & Gas	<b>TVD Reference:</b>	RKB @ 8134.0usft (30')
<b>Project:</b>	Garfield County, CO	<b>MD Reference:</b>	RKB @ 8134.0usft (30')
<b>Site:</b>	BJU M23A 496 Pad	<b>North Reference:</b>	True
<b>Well:</b>	BJU M23A FED 14D-23 496	<b>Survey Calculation Method:</b>	Minimum Curvature
<b>Wellbore:</b>	Wellbore #1		
<b>Design:</b>	Design #2		

Planned Survey									
Measured Depth (usft)	Inclination (°)	Azimuth (°)	Vertical Depth (usft)	+N/-S (usft)	+E/-W (usft)	Vertical Section (usft)	Dogleg Rate (°/100usft)	Build Rate (°/100usft)	Turn Rate (°/100usft)
8,800.0	1.37	250.00	8,784.0	0.1	-253.4	252.4	0.00	0.00	0.00
8,900.0	1.37	250.00	8,884.0	-0.8	-255.6	254.7	0.00	0.00	0.00
9,000.0	1.37	250.00	8,983.9	-1.6	-257.9	257.0	0.00	0.00	0.00
9,100.0	1.37	250.00	9,083.9	-2.4	-260.1	259.3	0.00	0.00	0.00
9,200.0	1.37	250.00	9,183.9	-3.2	-262.4	261.7	0.00	0.00	0.00
9,300.0	1.37	250.00	9,283.9	-4.0	-264.6	264.0	0.00	0.00	0.00
9,400.0	1.37	250.00	9,383.8	-4.8	-266.9	266.3	0.00	0.00	0.00
9,500.0	1.37	250.00	9,483.8	-5.7	-269.1	268.6	0.00	0.00	0.00
9,600.0	1.37	250.00	9,583.8	-6.5	-271.3	270.9	0.00	0.00	0.00
9,700.0	1.37	250.00	9,683.7	-7.3	-273.6	273.2	0.00	0.00	0.00
9,800.0	1.37	250.00	9,783.7	-8.1	-275.8	275.5	0.00	0.00	0.00
9,900.0	1.37	250.00	9,883.7	-8.9	-278.1	277.8	0.00	0.00	0.00
10,000.0	1.37	250.00	9,983.7	-9.8	-280.3	280.1	0.00	0.00	0.00
10,100.0	1.37	250.00	10,083.6	-10.6	-282.6	282.4	0.00	0.00	0.00
10,200.0	1.37	250.00	10,183.6	-11.4	-284.8	284.8	0.00	0.00	0.00
10,300.0	1.37	250.00	10,283.6	-12.2	-287.1	287.1	0.00	0.00	0.00
10,400.0	1.37	250.00	10,383.5	-13.0	-289.3	289.4	0.00	0.00	0.00
10,500.0	1.37	250.00	10,483.5	-13.8	-291.6	291.7	0.00	0.00	0.00
10,600.0	1.37	250.00	10,583.5	-14.7	-293.8	294.0	0.00	0.00	0.00
10,700.0	1.37	250.00	10,683.5	-15.5	-296.1	296.3	0.00	0.00	0.00
10,800.0	1.37	250.00	10,783.4	-16.3	-298.3	298.6	0.00	0.00	0.00
10,900.0	1.37	250.00	10,883.4	-17.1	-300.6	300.9	0.00	0.00	0.00
11,000.0	1.37	250.00	10,983.4	-17.9	-302.8	303.2	0.00	0.00	0.00
11,100.0	1.37	250.00	11,083.3	-18.8	-305.1	305.5	0.00	0.00	0.00
11,200.0	1.37	250.00	11,183.3	-19.6	-307.3	307.9	0.00	0.00	0.00
11,300.0	1.37	250.00	11,283.3	-20.4	-309.6	310.2	0.00	0.00	0.00
<b>Cameo</b>									
11,328.7	1.37	250.00	11,312.0	-20.6	-310.2	310.8	0.00	0.00	0.00
11,400.0	1.37	250.00	11,383.3	-21.2	-311.8	312.5	0.00	0.00	0.00
11,500.0	1.37	250.00	11,483.2	-22.0	-314.1	314.8	0.00	0.00	0.00
11,600.0	1.37	250.00	11,583.2	-22.8	-316.3	317.1	0.00	0.00	0.00
11,700.0	1.37	250.00	11,683.2	-23.7	-318.5	319.4	0.00	0.00	0.00
11,800.0	1.37	250.00	11,783.1	-24.5	-320.8	321.7	0.00	0.00	0.00
<b>Rollins</b>									
11,828.9	1.37	250.00	11,812.0	-24.7	-321.4	322.4	0.00	0.00	0.00
11,900.0	1.37	250.00	11,883.1	-25.3	-323.0	324.0	0.00	0.00	0.00
12,000.0	1.37	250.00	11,983.1	-26.1	-325.3	326.3	0.00	0.00	0.00
12,100.0	1.37	250.00	12,083.1	-26.9	-327.5	328.6	0.00	0.00	0.00
12,200.0	1.37	250.00	12,183.0	-27.8	-329.8	331.0	0.00	0.00	0.00
12,300.0	1.37	250.00	12,283.0	-28.6	-332.0	333.3	0.00	0.00	0.00
<b>TD @ 12329.0' MD / 12312.0' TVD</b>									
12,329.0	1.37	250.00	12,312.0	-28.8	-332.7	333.9	0.00	0.00	0.00

<b>Database:</b>	EDM 5000.1 Single User Db	<b>Local Co-ordinate Reference:</b>	Well BJU M23A FED 14D-23 496 - Slot 14D-23
<b>Company:</b>	Caerus Oil & Gas	<b>TVD Reference:</b>	RKB @ 8134.0usft (30')
<b>Project:</b>	Garfield County, CO	<b>MD Reference:</b>	RKB @ 8134.0usft (30')
<b>Site:</b>	BJU M23A 496 Pad	<b>North Reference:</b>	True
<b>Well:</b>	BJU M23A FED 14D-23 496	<b>Survey Calculation Method:</b>	Minimum Curvature
<b>Wellbore:</b>	Wellbore #1		
<b>Design:</b>	Design #2		

#### Design Targets

Target Name - hit/miss target - Shape	Dip Angle (°)	Dip Dir. (°)	TVD (usft)	+N/-S (usft)	+E/-W (usft)	Northing (usft)	Easting (usft)	Latitude	Longitude
OHCR - 14D-23 - plan hits target center - Point	0.00	0.00	8,087.0	5.4	-238.7	14,423,878.38	2,444,835.83	39.684208	-108.141021
PBHL - 14D-23 - plan hits target center - Ellipse (radii L100.0 W50.0 on 250.00 azi)	0.00	0.00	12,312.0	-28.8	-332.7	14,423,841.20	2,444,743.00	39.684114	-108.141355

#### Formations

Measured Depth (usft)	Vertical Depth (usft)	Name	Lithology	Dip (°)	Dip Direction (°)
3,367.0	3,367.0	Wasatch			
5,767.0	5,767.0	Wasatch G			
6,067.0	6,067.0	Fort Union			
8,102.8	8,087.0	Ohio Creek			
8,102.8	8,087.0	TOG			
8,469.9	8,454.0	William Fork			
11,328.7	11,312.0	Cameo			
11,828.9	11,812.0	Rollins			

#### Plan Annotations

Measured Depth (usft)	Vertical Depth (usft)	Local Coordinates		Comment
		+N/-S (usft)	+E/-W (usft)	
6,120.0	6,120.0	0.0	0.0	Build 3° / 100'
6,386.5	6,385.6	0.4	-18.6	EOB @ 8.00° Inc. / 271.29° Azm
7,836.3	7,821.4	5.0	-220.2	Drop 3° / 100'
8,102.8	8,087.0	5.4	-238.7	EOD @ Vertical / Build 1.5° / 100'
8,194.2	8,178.4	5.0	-239.7	EOB @ 1.37° Inc. / 250.00° Azm
12,329.0	12,312.0	-28.8	-332.7	TD @ 12329.0' MD / 12312.0' TVD