

LEGEND:

- = PROPOSED WELLHEAD.
- ◆ = TOP OF GAS INTERVAL.
- = TARGET BOTTOM HOLE.
- ▲ = SECTION CORNERS LOCATED. (NAD 83)
- △ = SECTION CORNERS RE-ESTABLISHED. (Not Set on Ground.) (NAD 83)

1953 Brass Cap,
0.8' High, Mound
of Stones, Steel
Post
Lat: 39.695234'
Long: 108.145545'

T4S, R96W, 6th P.M.

Rio Blanco County

1953 Brass Cap, 1.1' High, Small Mound of Stones
Lat: 39.695333'
Long: 108.135807'

1953 Brass Cap, 0.2' High, Mound of Stones, Steel Post
Lat: 39.687828'
Long: 108.145436'

1978 Brass Cap, 0.5' High, Stones
Lat: 39.695282'
Long: 108.140677'

1953 Brass Cap, 1.1' High, Small Mound of Stones
Lat: 39.695333'
Long: 108.131125'

NE Cor. Sec. 23,
1953 Brass Cap,
0.6' High, Mound
of Stones
Lat: 39.695347'
Long: 108.126444'

1953 Brass Cap,
0.2' High, Mound
of Stones, Steel
Post
Lat: 39.695158'
Long: 108.126443'

E 1/4 Cor. Sec. 23,
1953 Brass Cap, 0.2'
High, Steel Post
Lat: 39.688370'
Long: 108.126478'

W 1/4 Cor. Sec. 24,
1953 Brass Cap, 0.9'
High, Steel Post
Lat: 39.688081'
Long: 108.126476'

1953 Brass,
Cap 0.8' High,
Steel Post
Lat: 39.680584'
Long: 108.145383'

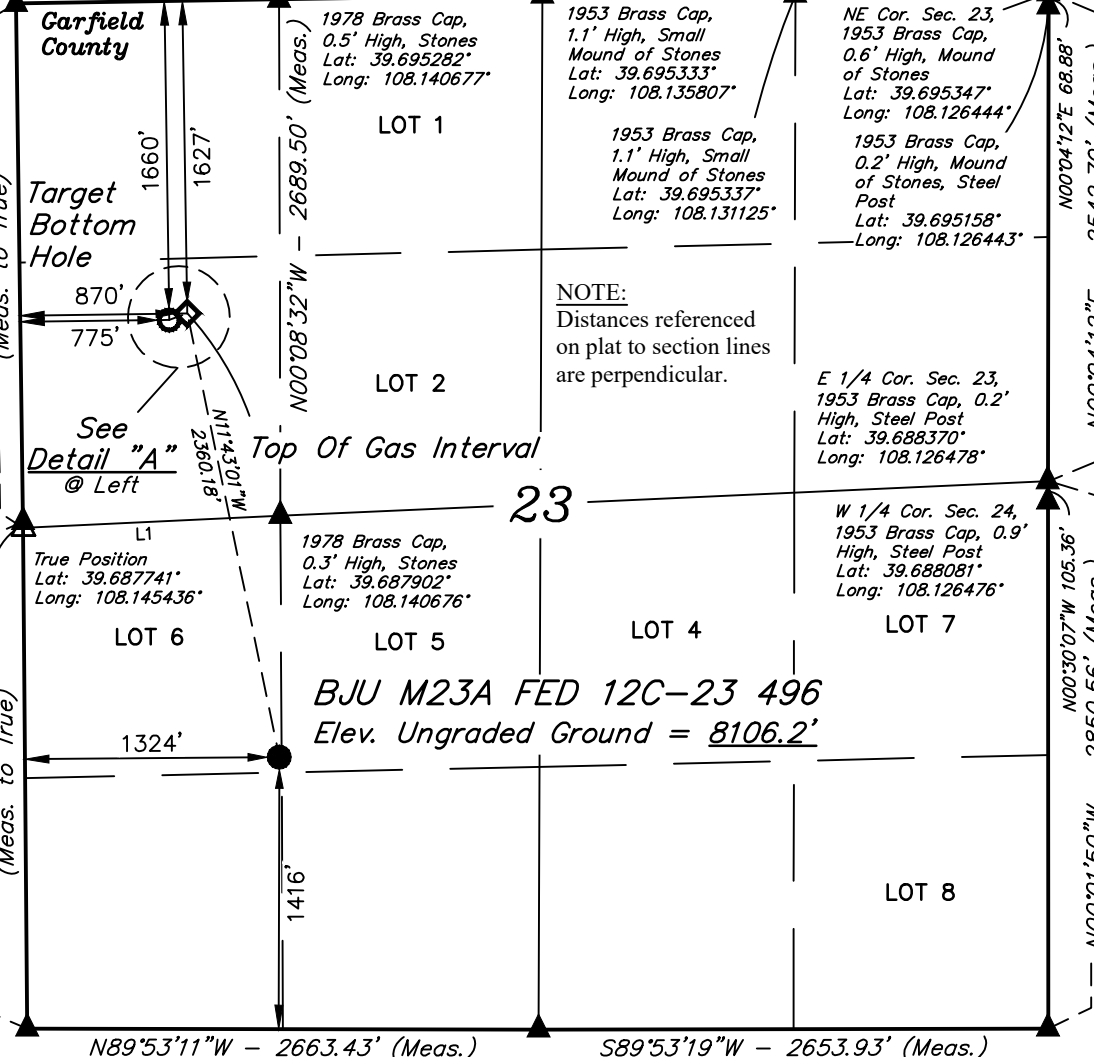
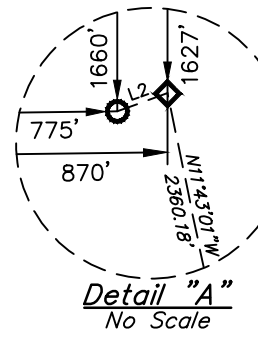
1978 Brass Cap,
0.3' High, Stones
Lat: 39.687741'
Long: 108.140676'

1953 Brass Cap,
1.0' High, Mound
of Stones
Lat: 39.680552'
Long: 108.135924'

1953 Brass Cap,
0.5' High, Mound
of Stones, Steel
Post
Lat: 39.680548'
Long: 108.126499'

LINE TABLE		
LINE	DIRECTION	LENGTH
L1	S87°21'03"W	1341.34'
L2	S70°00'26"W	100.03'

BASIS OF BEARINGS
N00°46'39"W - 2730.78'
(Meas. to True)



PDOP = 1.3

NAD 83 (SURFACE LOCATION)	
LATITUDE = 39°41'04.04"	(39.684454)
LONGITUDE = 108°08'26.55"	(108.140708)
NAD 27 (SURFACE LOCATION)	
LATITUDE = 39°41'04.12"	(39.684479)
LONGITUDE = 108°08'24.26"	(108.140073)
UTM NAD 27 (ZONE 12)	
N: 14423985.67'	E: 2445099.50'



NAD 83 (TOP OF GAS INTERVAL)		NAD 83 (TARGET BOTTOM HOLE)	
LATITUDE = 39°41'26.88"	(39.690799°)	LATITUDE = 39°41'26.54"	(39.690706°)
LONGITUDE = 108°08'32.61"	(108.142391°)	LONGITUDE = 108°08'33.81"	(108.142725°)
NAD 27 (TOP OF GAS INTERVAL)		NAD 27 (TARGET BOTTOM HOLE)	
LATITUDE = 39°41'26.97"	(39.690824°)	LATITUDE = 39°41'26.63"	(39.690731°)
LONGITUDE = 108°08'30.32"	(108.141755°)	LONGITUDE = 108°08'31.52"	(108.142089°)
UTM NAD 27 (ZONE 12)		UTM NAD 27 (ZONE 12)	
N: 14426281.37'	E: 2444552.35'	N: 14426244.42'	E: 2444459.40'

CERTIFICATE OF SURVEY

THIS IS TO CERTIFY THAT THE ABOVE PLAT WAS PREPARED AND THE LOCATION AS SHOWN WAS STAKED ON THE GROUND FROM FIELD NOTES OF ACTUAL SURVEYS MADE BY ME OR UNDER MY SUPERVISION AND THAT THE SAME ARE TRUE AND CORRECT TO THE BEST OF MY KNOWLEDGE AND BELIEF.

Handwritten Signature: Harold Marshall

REGISTERED LAND SURVEYOR
REGISTRATION NO. 19180
STATE OF COLORADO

07-20-22

BASIS OF BEARINGS
BEARINGS ARE BASED ON THE ASSUMPTION THAT THE WEST LINE OF THE NORTHWEST 1/4 OF SECTION 23 BEARS N00°46'39"W. MONUMENTS DESCRIBED HEREON.

BASIS OF ELEVATION
BENCH MARK (H79) LOCATED IN THE NE 1/4 OF SECTION 35, T4S, R98W, 6th P.M., TAKEN FROM THE BULL FORK QUADRANGLE, COLORADO, 7.5 MINUTE SERIES. (TOPOGRAPHIC MAP) PUBLISHED BY THE UNITED STATES DEPARTMENT OF THE INTERIOR, GEOLOGICAL SURVEY. SAID ELEVATION IS MARKED AS BEING 8535 FEET.



UELS, LLC
Corporate Office * 85 South 200 East
Vernal, UT 84078 * (435) 789-1017

Caerus Oil & Gas LLC

BJU M23A FED 12C-23 496
LOT 6, SECTION 23, T4S, R96W, 6th P.M.
GARFIELD COUNTY, COLORADO

SURVEYED BY	DAYTON SLAUGH, B.H.	05-27-20	SCALE
DRAWN BY	T.L.L.	06-11-20	1" = 1000'

WELL LOCATION PLAT

REV: 1 07-20-22 M.D. (SHL, TGI & BHL MOVE)