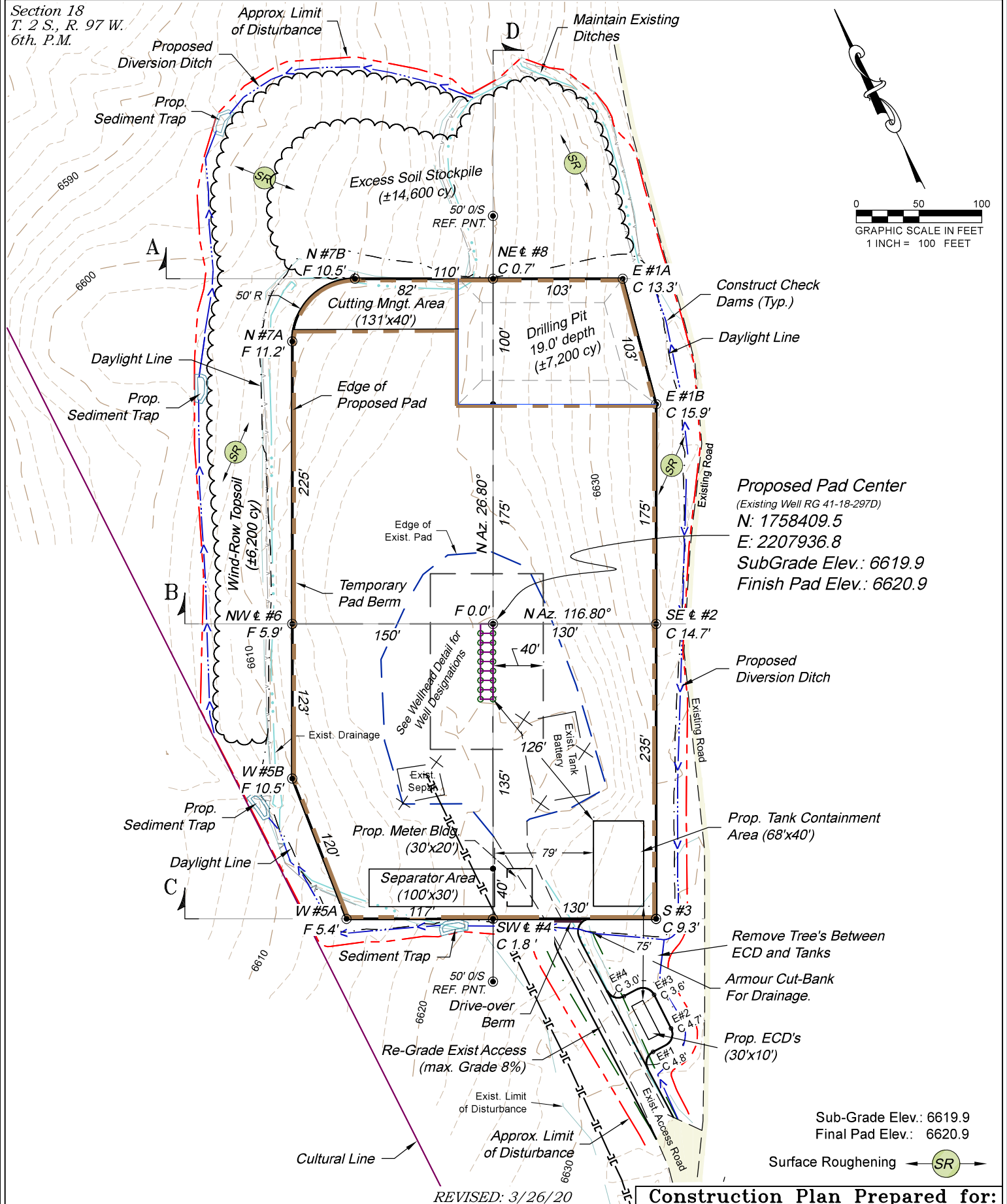


Section 18
T. 2 S., R. 97 W.
6th. P.M.



Proposed Pad Center
(Existing Well RG 41-18-297D)
N: 1758409.5
E: 2207936.8
SubGrade Elev.: 6619.9
Finish Pad Elev.: 6620.9

Prop. Tank Containment Area (68'x40')

Remove Tree's Between ECD and Tanks
Armour Cut-Bank For Drainage.

Prop. ECD's (30'x10')

Sub-Grade Elev.: 6619.9
Final Pad Elev.: 6620.9

Surface Roughening (SR)

REVISED: 3/26/20

136 East Third Street
Rifle, Colorado 81650
Ph. (970) 625-2720
Fax (970) 625-2773

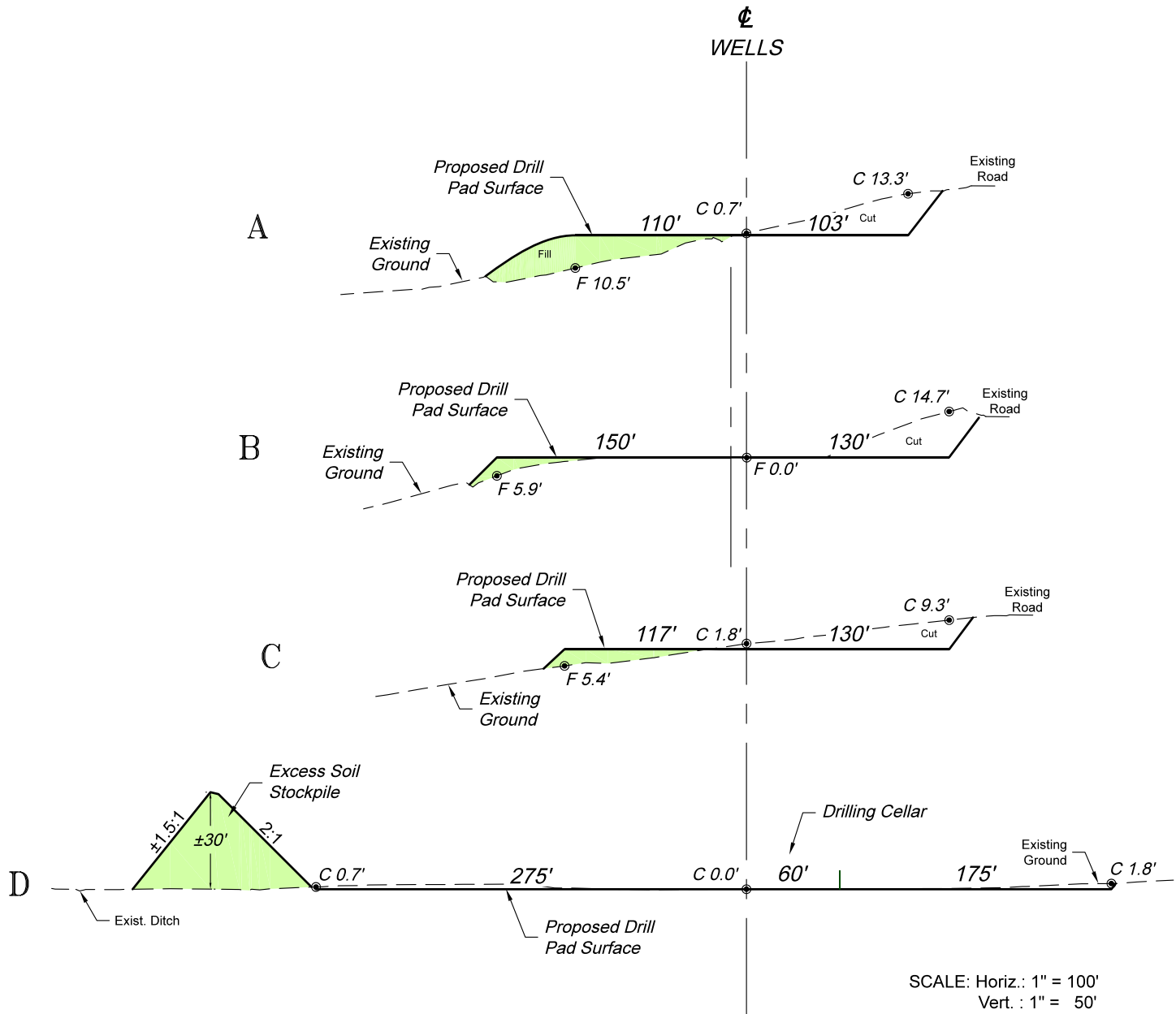
SCALE:	1" = 100'
DATE:	9/04/19
PLAT:	2 of 7
PROJECT:	Highlands
DFT:	cs

Construction Plan Prepared for:

TEP Rocky Mountain LLC

RG 41-18-297 Drill Pad - Plat 2
CONSTRUCTION LAYOUT

Section 18
T. 2 S., R. 97 W.
6th. P.M.



Pad Surface Completion Volumes:
6" Aggregate Base = ±2660 cy
6" Shale Base = ±2660 cy

Road Completion Volumes:
2" Aggregate Base = ±40 cy

***NOTES:**

- 1.) Cut Slope: 1.5:1
Fill Slope: 2:1, Unless Otherwise Noted.
- 2.) Topsoil Volume Based on 12" Soil Depth.
- 3.) 20% Swell Factor Applied to Earthwork Cut Volume.
- 4.) Total Disturbed Area = ±6.09 ac.
- 5.) Road Earthwork Volumes Included in PAD ITEM.

ESTIMATED EARTHWORK QUANTITIES (cy)				
ITEM	CUT	FILL	TOPSOIL	EXCESS
PAD	20,800	9,550	5,180	6,070
PIT	8,640			8,640
TOTALS	29,440	9,550	5,180	14,710

REVISED: 2/05/20

136 East Third Street
Rifle, Colorado 81650
Ph. (970) 625-2720
Fax (970) 625-2773



SCALE: As Noted
DATE: 9/04/19
PLAT: 2A of 7
PROJECT: Highlands
DFT: cs

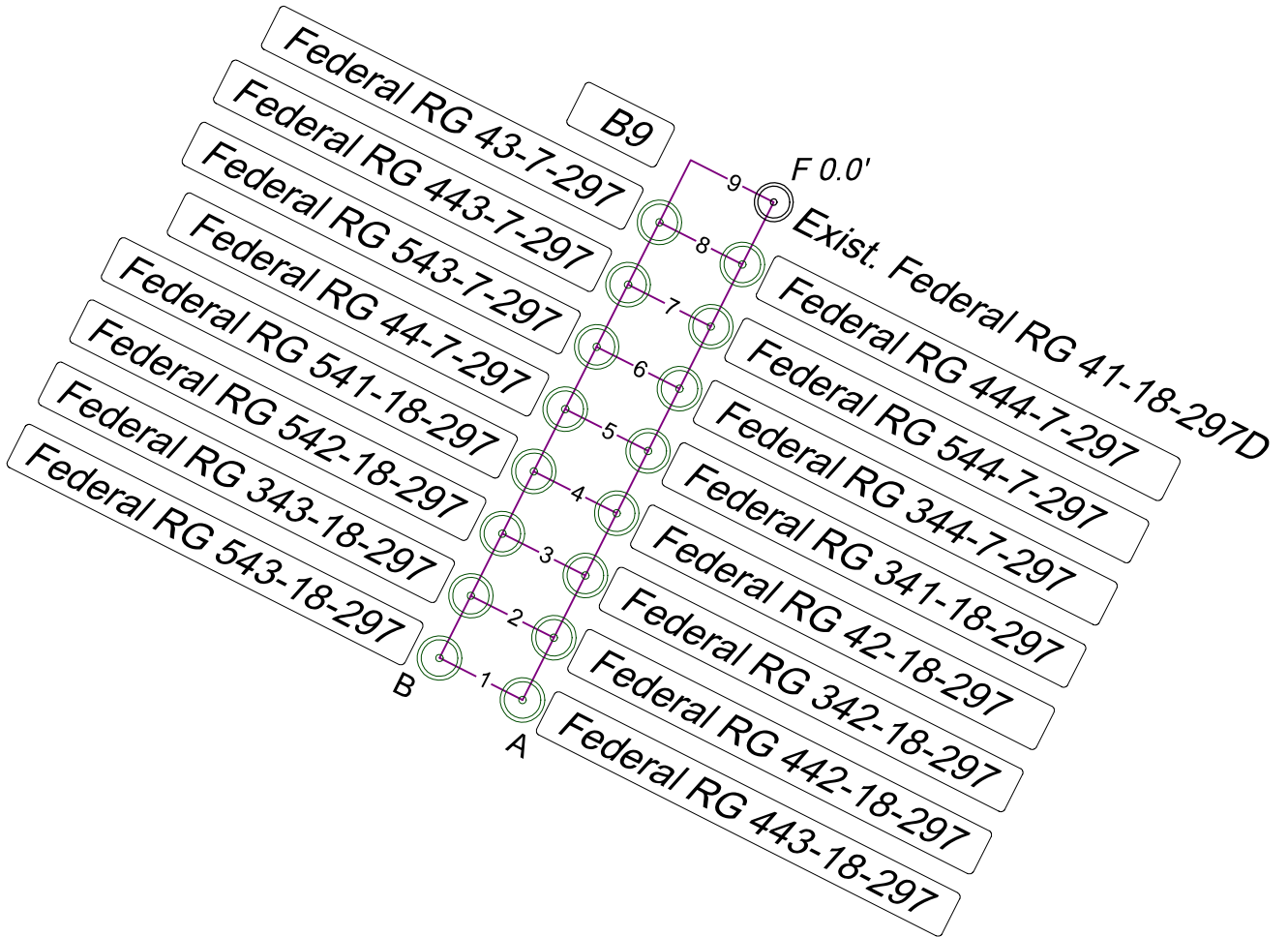
Construction Plan Prepared for:



TEP Rocky Mountain LLC

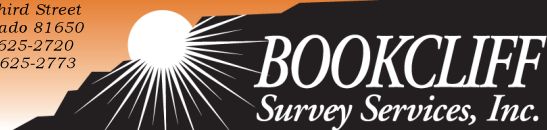
RG 41-18-297 Drill Pad - Plat 2A
CONSTRUCTION LAYOUT
CROSS SECTIONS

Section 18
 T. 2 S., R. 97 W.
 6th. P.M.



REVISED: 4/01/20

136 East Third Street
 Rifle, Colorado 81650
 Ph. (970) 625-2720
 Fax (970) 625-2773



SCALE: NTS
 DATE: 12/11/09
 PLAT: 2B of 7
 PROJECT: Highlands
 DFT: cs

Construction Plan Prepared for:



TEP Rocky Mountain LLC

RG 41-18-297 Drill Pad - Plat 2B
 WELLHEAD DETAIL

12/11/09 10:02:19 AM 100% 19.0%