

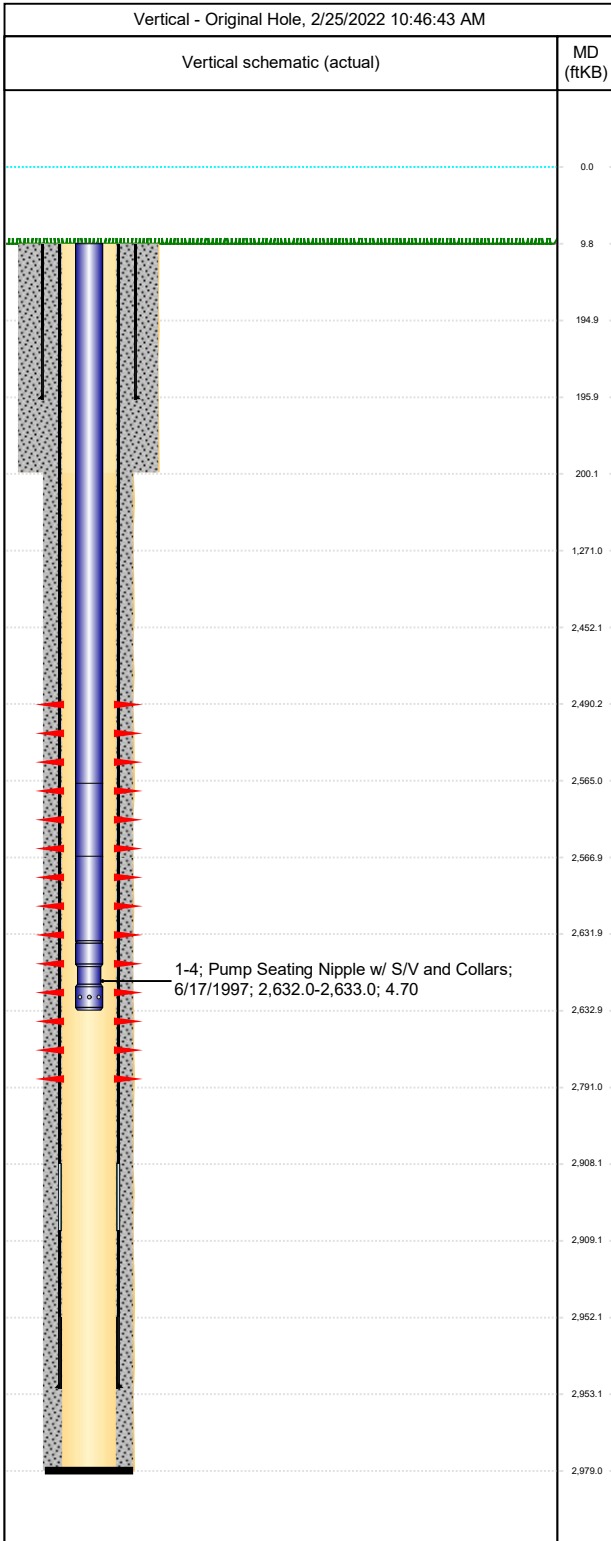


Downhole Well Profile

Well Name: DRAGON TRAIL UN 1150 1993 DRL100%

API/UWI 05103096020000	Surface Legal Location SWNW-S21-T2S-R102W-6PM	Field Name Dragon Trail	License #	State/Province CO	Well Configuration Type Vertical
Original KB Elevation (ft) 6,691	KB-Tubing Head Distance (ft) 10	Spud Date 6/23/1993 00:00	Rig Release Date 7/18/1993 00:00	PBTD (All) (ftKB) Original Hole - 2,979.0	Total Depth All (TVD) (ftKB) Original Hole - 2,979.0

Type						
Des	Make	Model	WP (psi)	Service	WP Top (psi)	Bore Min (in)



Casing Strings							
Csg Des	OD (in)	Wt/Len (lb/ft)	Grade	Top Thread	Set Depth (ftKB)		
Surface	8 5/8	24.00	J-55	ST&C	196.0		
Production	5 1/2	15.50	J-55	LT&C	2,953.0		
Perforations							
Date	Top (ftKB)	Btm (ftKB)	Linked Zone				
7/23/1993	2490	2791	Mancos B, Original Hole				
Tubing Strings							
Tubing Description	Run Date	String Length (ft)	Set Depth (ftKB)				
Tubing - Production	6/17/1997	2,623.00	2,633.0				
Item Des	Jts	Make	Model	OD (in)	Wt (lb/ft)	Grade	Len (ft)
Tubing	81			2 3/8	4.70		2555
Flag Pup	1			2 3/8	4.70		2
Tubing	2			2 3/8	4.70		65
Pump Seating Nipple w/ S/V and Collars	1			2 3/8	4.70		1
Rod Strings							
Rod Description	Run Date	String Length (ft)	Set Depth (ftKB)				
Item Des	Jts	Make	Model	OD (in)	Wt (lb/ft)	Grade	Len (ft)