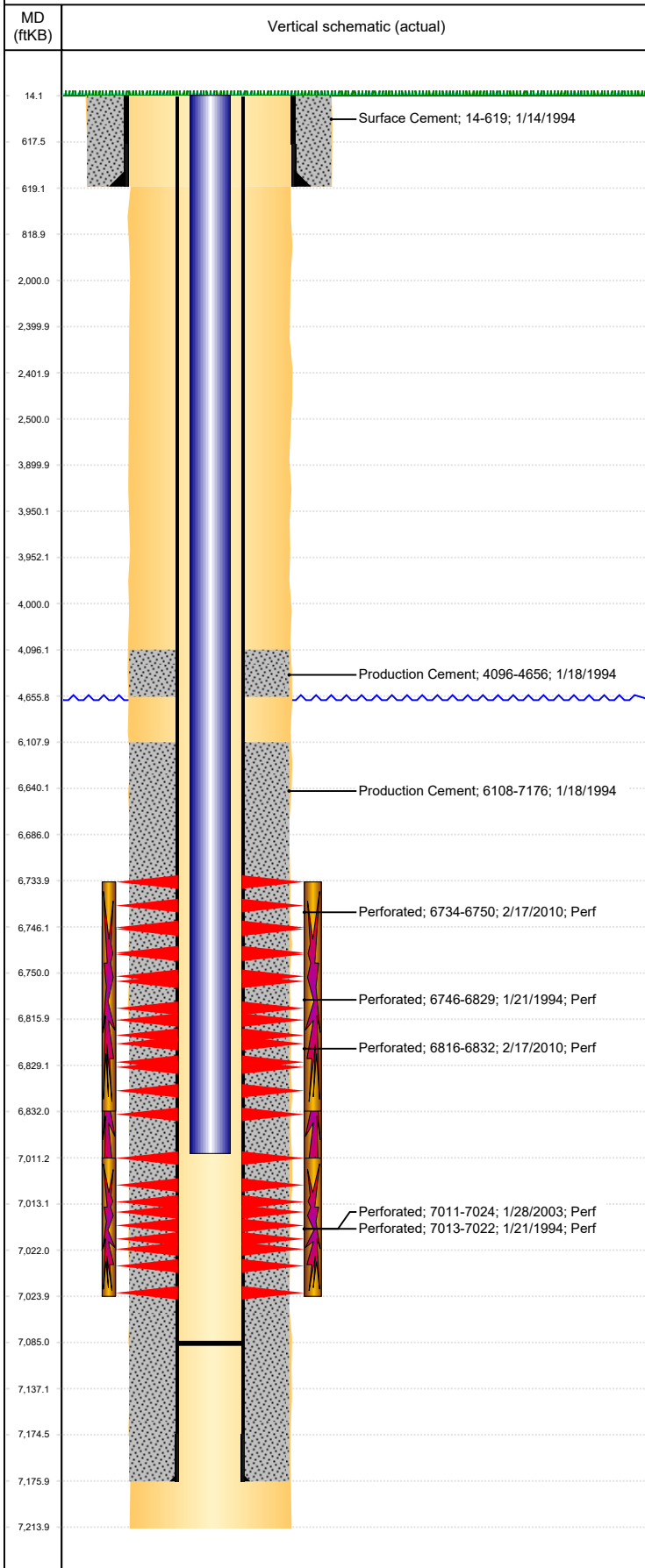




P&A Wellbore For State

Well Name: API 20-0414

Land, Original Hole, 8/12/2022 1:13:49 PM



Well Header									
Surface UWI 0512317897			Business Unit Rockies			Gov Auth Dist		Prod Tree Loc Land	
Orig. KB to Gnd (ft) 14.00		Original Spud Date 1/13/1994		Abandon Date		Well Sub-Status SI			High... N
Comment LIMITED ENTRY. POSS FRAC'D INTO PREBISH 1									
Surface Location (Congressional)									
Qtr 3 NW	Qtr 4 NW	Section 20	Twnshp 4	Twنش... N	Range 64	Rng E/L... W	Latitude (°) 40.30307951 1	Longitude (°) -104.581719043	
Wellbore Sections									
Section Des			Hole Size (in)			Act Top (ftKB)		Act Btm (ftKB)	
SURFACE			12 1/4			14.0		619.0	
PRODUCTION			7 7/8			619.0		7,214.0	
Casing Strings									
Csg Des		Run Date		OD (in)	Wt/Len (lb/ft)	Grade	Top Depth (MD) (ftKB)	Set Depth (MD) (ftKB)	
Surface		1/14/1994		8 5/8	24.00		14	619	
Production Casing		1/18/1994		3 1/2	7.70	M-50	14	7176	
Cement									
Des					Start Date		Top (ftKB)		Btm (ftKB)
Surface Cement					1/14/1994		14.0		619.0
Production Cement					1/18/1994		4,096.0		4,656.0
Production Cement					1/18/1994		6,108.0		7,176.0
Zone Statuses									
Zone Name	Status Date	Status	Fluid Type	Job				Prod Method	
CODELL	3/6/2010	PR	Water	RE-FRAC, 2/16/2010 06:00				Flowing	
CODELL	3/29/2010	PR		RE-FRAC, 2/16/2010 06:00				Flowing	
NIOBRARA	3/6/2010	PR		RE-FRAC, 2/16/2010 06:00				Flowing	
NIOBRARA	3/29/2010	PR		RE-FRAC, 2/16/2010 06:00				Flowing	
NIOBRARA-CO...	11/26/2014	TA		HORIZONTAL WELL PREP, 11/21/2014 06:00				Flowing	
NIOBRARA-CO...	10/27/2016	SI							
Perforation Data									
Linked Zone		Explosive Type	Entered Shot Total	Top (ftKB)		Btm (ftKB)		Date	
NIOBRARA, Original Hole		A	64	6,734.0		6,750.0		2/17/2010	
NIOBRARA, Original Hole			6	6,746.0		6,829.0		1/21/1994	
NIOBRARA, Original Hole		B	64	6,816.0		6,832.0		2/17/2010	
CODELL, Original Hole			52	7,011.0		7,024.0		1/28/2003	
CODELL, Original Hole			69	7,013.0		7,022.0		1/21/1994	
Stimulation Intervals									
Zone			Start Date			Top (ftKB)		Btm (ftKB)	
NIOBRARA, Original Hole			3/4/2010			6,734.0		6,832.0	
NIOBRARA-CODELL, Original Hole			1/24/1994			6,746.0		7,022.0	
CODELL, Original Hole			2/4/2003			7,011.0		7,024.0	
Other In Hole									
Run Date		Des			Make		OD (in)	Top (ftKB)	Btm (ftKB)
Logs									
Date		Type					Depth Top (MD) (ftKB)	Btm (ftKB)	
1/18/1994		COMPENSATED DENSITY					4,290	7,212.0	
1/18/1994		INDUCTION					622	7,212.0	
1/21/1994		CEMENT BOND					3,950	7,121.0	
6/20/2014		GYRO					0	6,900.0	
Plug Back Total Depths									
Date		Type			Com				PBTD (ftKB)
3/22/2010		FILL			C/O TO 7135' KB.				7,135
11/25/2014		FILL							7,085