



FORM F-106

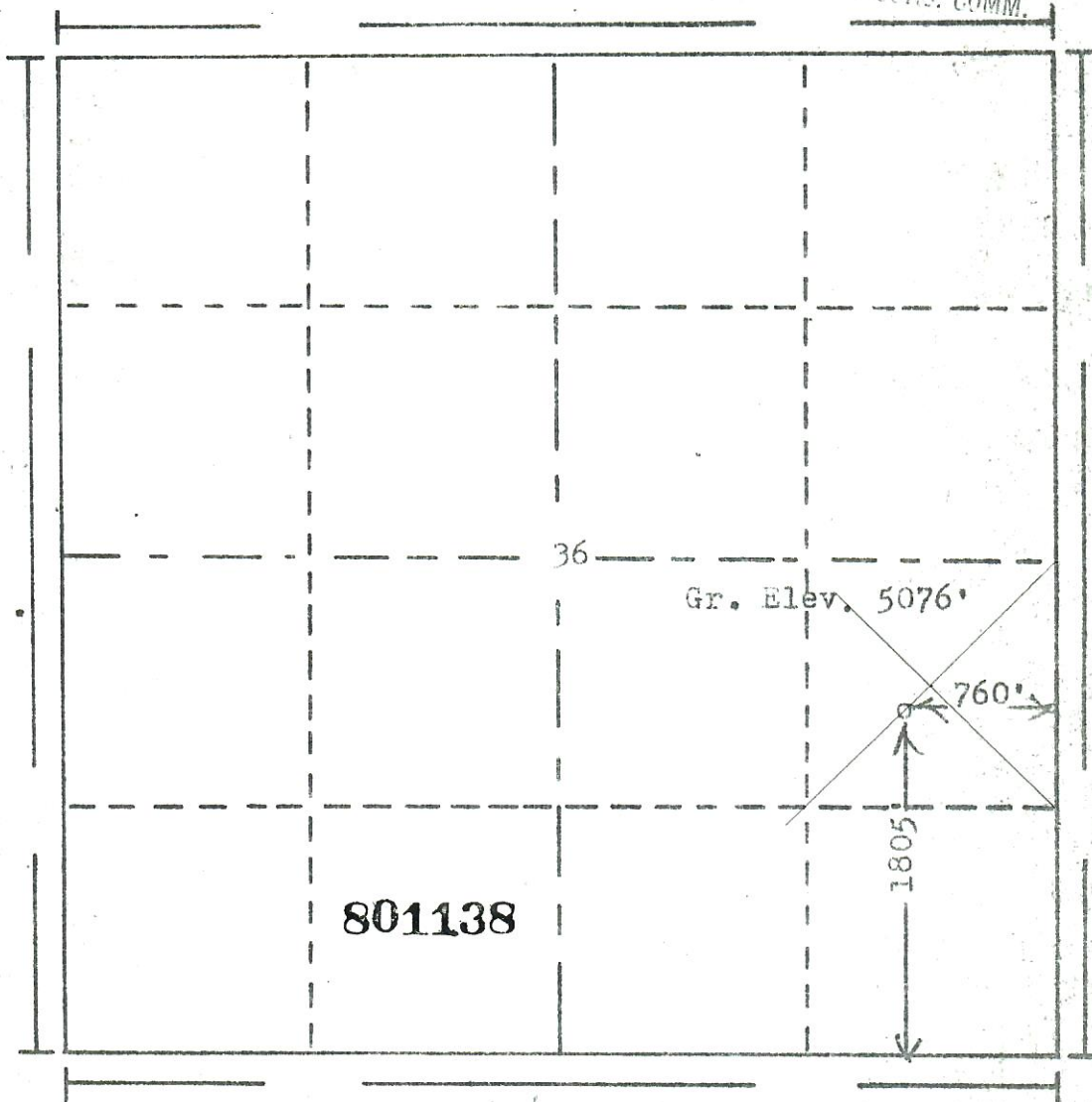
BE  
AVAILABLE

00334311

RECEIVED JUL 17 1980  
AUG 20 1980

R. 60W

COLO. OIL &amp; GAS CONS. COMM.



Scale... 1" = 1000'

Powers Elevation of Denver, Colorado  
has in accordance with a request from Mr. Thatcher  
for E. Doyle Huckabay Ltd.

determined the location of No. 2-36 State  
to be 1805' FS & 760' FE  
Range 60W of the 6th Principal Meridian  
Adams County, Colorado

I hereby certify that this plat is an  
accurate representation of a correct  
survey showing the location of

Date: 7-8-80

Robert J. Halloway  
Licensed Land Surveyor No. 2853  
State of Colorado