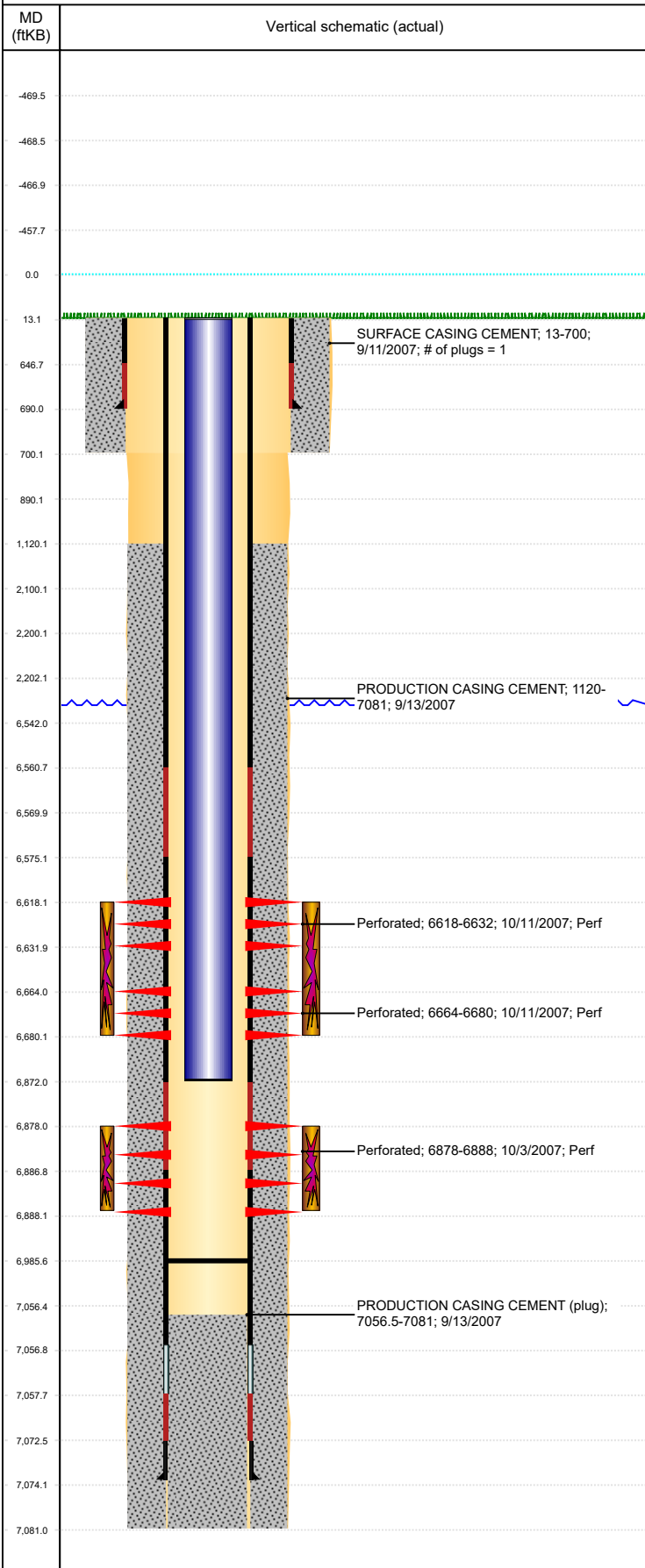




P&A Wellbore For State

Well Name: SADIE CC31-14

Land, Original Hole, 8/10/2022 5:41:36 PM



Well Header									
Surface UWI 0512321922		Business Unit Rockies		Gov Auth Dist		Prod Tree Loc Land			
Orig. KB to Gnd (ft) 13.00		Original Spud Date 9/10/2007		Abandon Date		Well Sub-Status PR		High...	
Comment									
Surface Location (Congressional)									
Qtr 3 SE	Qtr 4 SW	Section 31	Twonshp 4	Twonsh... N	Range 63	Rng E/... W	Latitude (°) 40.26303916	Longitude (°) -104.482234971	
Wellbore Sections									
Section Des		Hole Size (in)		Act Top (ftKB)		Act Btm (ftKB)			
SURFACE		12 1/4		13.0		700.0			
PRODUCTION		7 7/8		700.0		7,081.0			
Casing Strings									
Csg Des		Run Date		OD (in)		Wt/Len (lb/ft)		Grade	
Surface		9/11/2007		8 5/8		24.00		J-55	
Production Casing		9/13/2007		4 1/2		11.60		M-80	
Top Depth (MD) (ftKB)		Set Depth (MD) (ftKB)							
13		690							
13		7074							
Cement									
Des		Start Date		Top (ftKB)		Btm (ftKB)			
SURFACE CASING CEMENT		9/11/2007		13.0		700.0			
PRODUCTION CASING CEMENT		9/13/2007		1,120.0		7,081.0			
Zone Statuses									
Zone Name		Status Date		Status		Fluid Type		Job	
CODELL		10/13/2007		PR		OIL		DRILLING/COMPLETION - ORIGINAL, 9/7/2007...	
NIOBRARA		10/13/2007		PR				DRILLING/COMPLETION - ORIGINAL, 9/7/2007...	
Prod Method		Flowing							
Perforation Data									
Linked Zone		Explosive Type		Entered Shot Total		Top (ftKB)		Btm (ftKB)	
NIOBRARA, Original Hole				56		6,618.0		6,632.0	
NIOBRARA, Original Hole				64		6,664.0		6,680.0	
CODELL, Original Hole				40		6,878.0		6,888.0	
Date		10/3/2007							
Stimulation Intervals									
Zone		Start Date		Top (ftKB)		Btm (ftKB)			
NIOBRARA, Original Hole		10/11/2007		6,618.0		6,680.0			
CODELL, Original Hole		10/11/2007		6,878.0		6,888.0			
Other In Hole									
Run Date		Des		Make		OD (in)		Top (ftKB)	
Logs									
Date		Type				Depth Top (MD) (ftKB)		Btm (ftKB)	
9/13/2007		Compensated Density				2,540		7,049.0	
9/13/2007		Induction				690		7,069.0	
9/25/2007		CBL/CCL/GR				900		7,010.0	
1/10/2014		GYRO				0		6,800.0	
Plug Back Total Depths									
Date		Type		Com				PBTD (ftKB)	
9/13/2007		FLOAT SHOE		CASING TALLY PBTD				7,056	
2/6/2008		PLUG & FILL		DRILLED UP CIFTF & PUSHED DN HOLE TO 6985.72' W/ 16' I...				6,986	