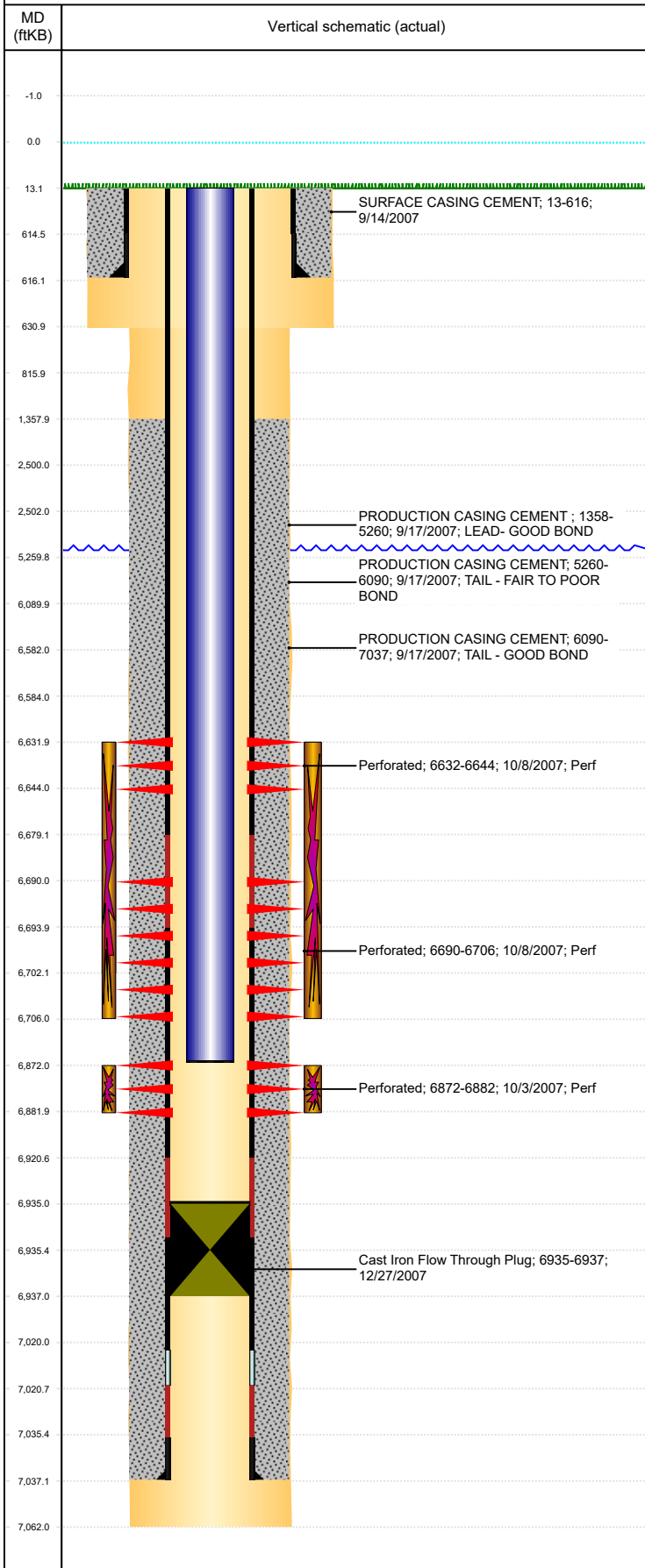




P&A Wellbore For State

Well Name: SADIE CC31-11

Land, Original Hole, 8/10/2022 5:29:14 PM



Well Header									
Surface UWI 0512321920			Business Unit Rockies			Gov Auth Dist		Prod Tree Loc Land	
Orig. KB to Gnd (ft) 13.00		Original Spud Date 9/14/2007		Abandon Date		Well Sub-Status PR			High... N
Comment DISCREPENCIES: NB PERFS- ST 6618'-6680', DRL RPT & JW WIRELINE TICKET 6632'-6706'; CD PERFS- ST 6878'-6888', DRL RPT 6872'-6882'.DRILL OUT CIPF, PUSHED IT W ALL OF THE 224TH JT									
Surface Location (Congressional)									
Qtr 3 NE	Qtr 4 SW	Section 31	Twnshp 4	Twnsh... N	Range 63	Rng E/... W	Latitude (°) 40.26739988 3	Longitude (°) -104.4825307	
Wellbore Sections									
Section Des			Hole Size (in)			Act Top (ftKB)		Act Btm (ftKB)	
SURFACE			12 1/4			13.0		631.0	
PRODUCTION			7 7/8			631.0		7,062.0	
Casing Strings									
Csg Des		Run Date		OD (in)	Wt/Len (lb/ft)	Grade	Top Depth (MD) (ftKB)	Set Depth (MD) (ftKB)	
Surface		9/14/2007		8 5/8	24.00	J-55	13	616	
Production Casing		9/17/2007		4 1/2	11.60	M-80	13	7037	
Cement									
Des				Start Date		Top (ftKB)		Btm (ftKB)	
SURFACE CASING CEMENT				9/14/2007		13.0		616.0	
PRODUCTION CASING CEMENT				9/17/2007		1,358.0		5,260.0	
PRODUCTION CASING CEMENT				9/17/2007		5,260.0		6,090.0	
PRODUCTION CASING CEMENT				9/17/2007		6,090.0		7,037.0	
Zone Statuses									
Zone Name		Status Date	Status	Fluid Type	Job			Prod Method	
NIOBRARA		10/13/2007	PR		DRILLING/COMPLETION - ORIGINAL, 9/14/2007...			Flowing	
CODELL		10/13/2007	PR		DRILLING/COMPLETION - ORIGINAL, 9/14/2007...			Flowing	
CODELL		12/27/2007	PR		DRILLING/COMPLETION - ORIGINAL, 9/14/2007...			Flowing	
Perforation Data									
Linked Zone			Explosive Type	Entered Shot Total	Top (ftKB)		Btm (ftKB)		Date
NIOBRARA, Original Hole				48	6,632.0		6,644.0		10/8/2007
NIOBRARA, Original Hole				64	6,690.0		6,706.0		10/8/2007
CODELL, Original Hole				40	6,872.0		6,882.0		10/3/2007
Stimulation Intervals									
Zone				Start Date		Top (ftKB)		Btm (ftKB)	
NIOBRARA, Original Hole				10/8/2007		6,632.0		6,706.0	
NIOBRARA, Original Hole				10/8/2007		6,632.0		6,702.0	
CODELL, Original Hole				10/11/2007		6,872.0		6,882.0	
Other In Hole									
Run Date		Des			Make		OD (in)	Top (ftKB)	Btm (ftKB)
12/27/2007		Cast Iron Flow Through Plug					3.99	6,935.0	6,937.0
Logs									
Date		Type					Depth Top (MD) (ftKB)		Btm (ftKB)
9/17/2007		COMPENSATED DENSITY					2,600		7,020.0
9/17/2007		INDUCTION					616		7,040.0
9/25/2007		CEMENT BOND					1,100		6,984.0
Plug Back Total Depths									
Date		Type			Com				PBTD (ftKB)
9/25/2007		FILL			DEPTH LOGGER ON CBL				6,984
12/27/2007		FILL			DRILL OUT CIFTP, PUSH TO 6935', BLOW HOLE CLEAN				6,935