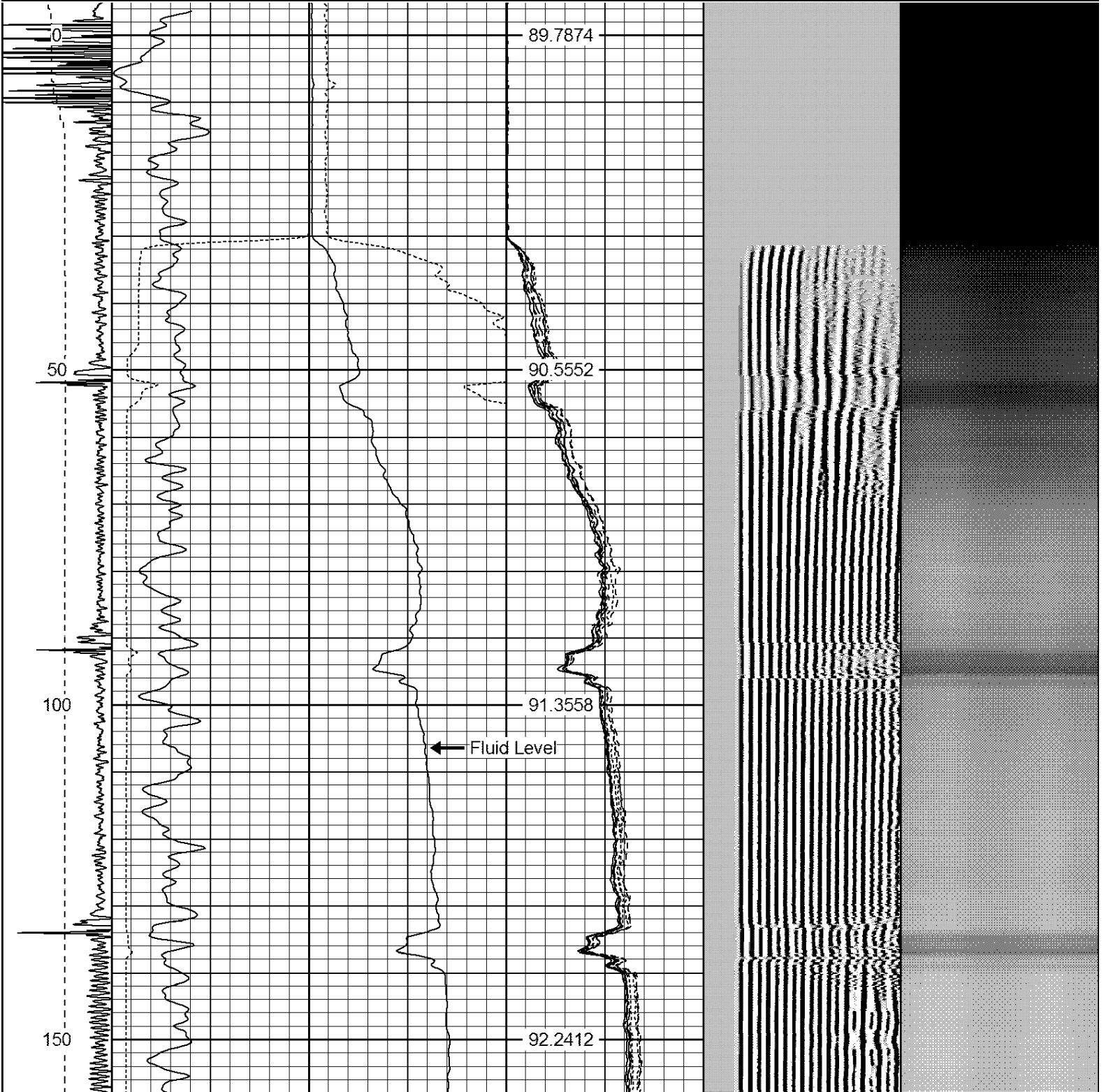
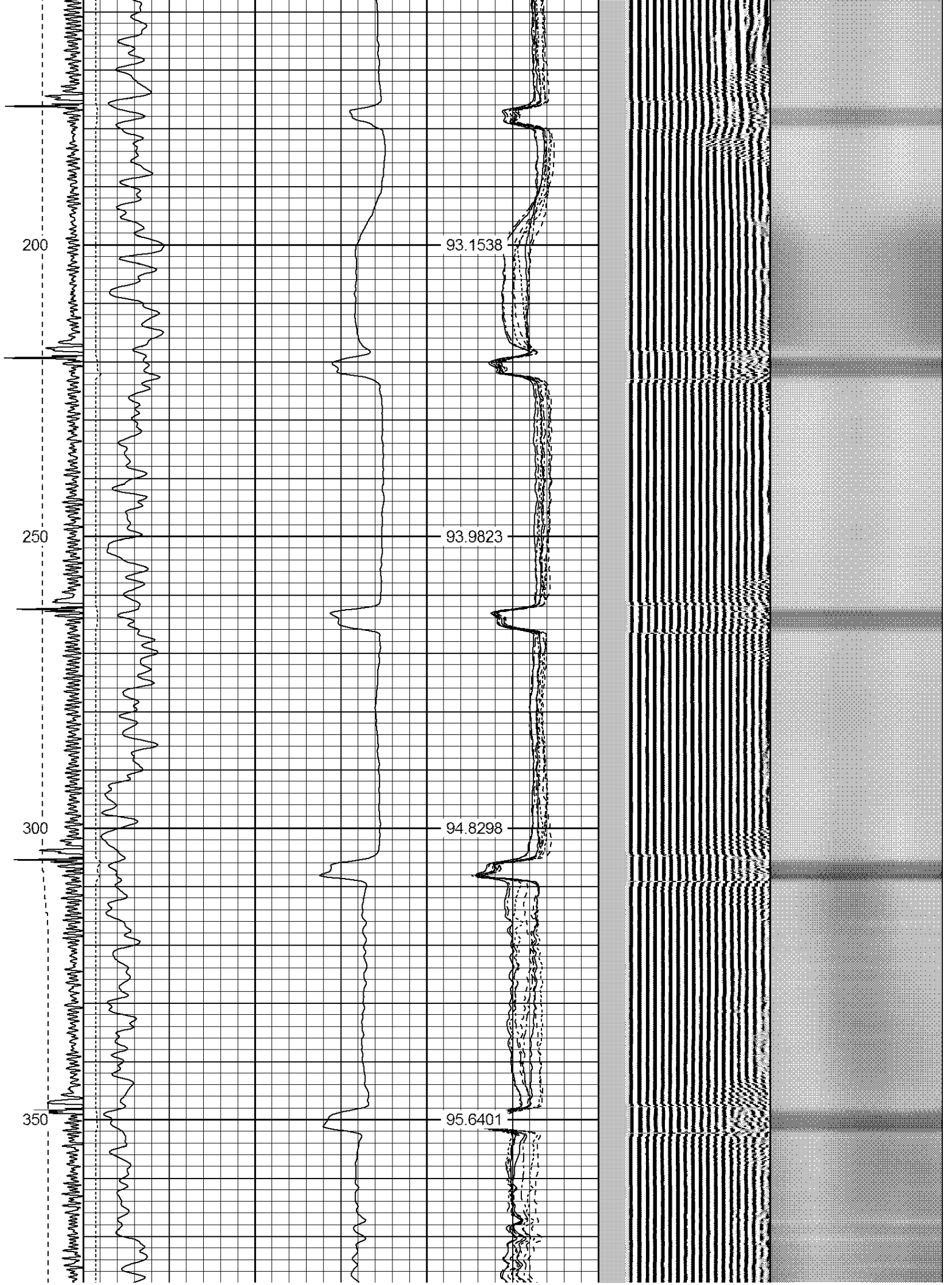


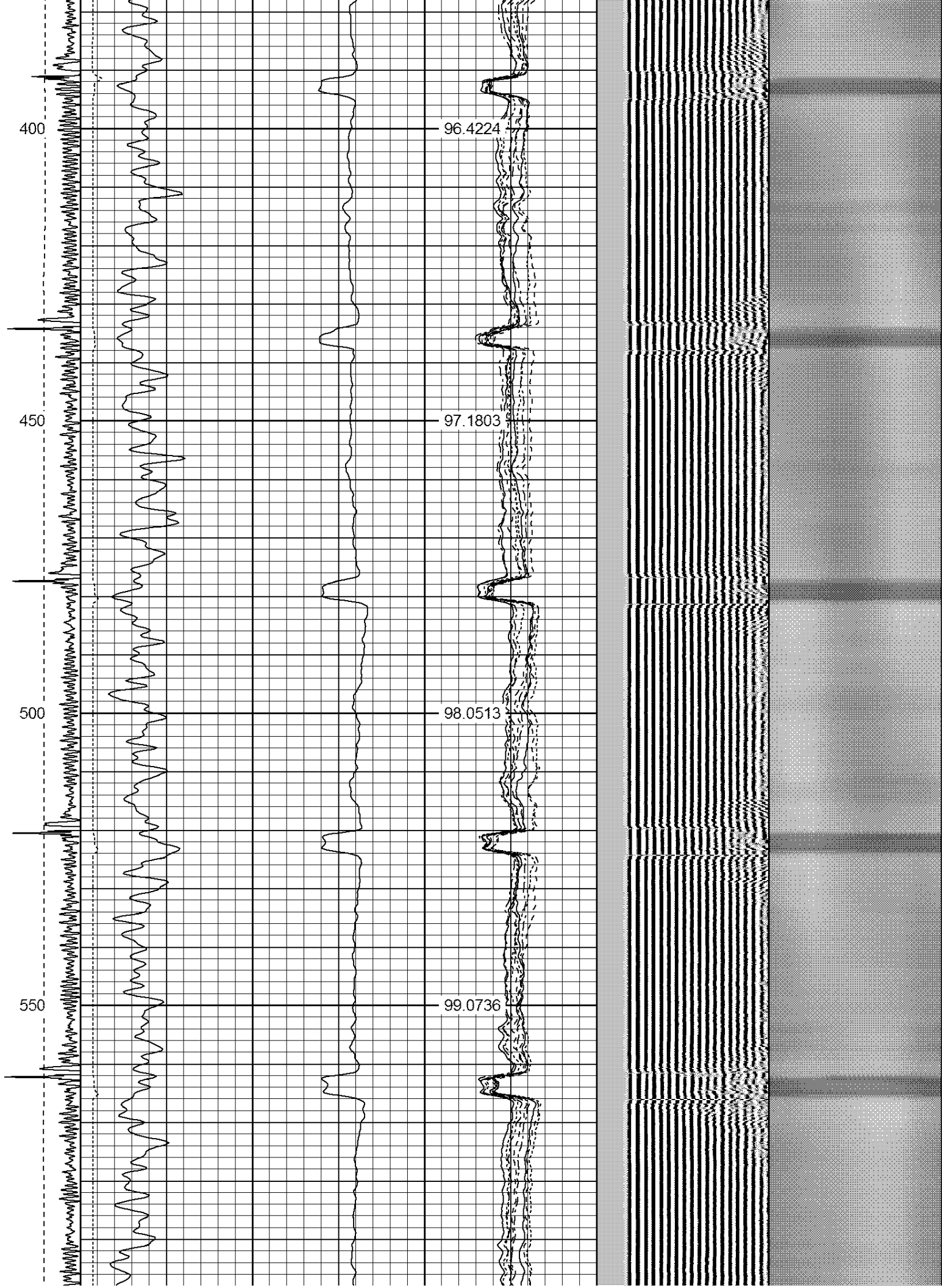
Dataset: corbin d30-23d.db: field/well/run1/pass10  
 Total Length: 16.02 ft  
 Total Weight: 161.00 lb  
 O.D.: 2.75 in

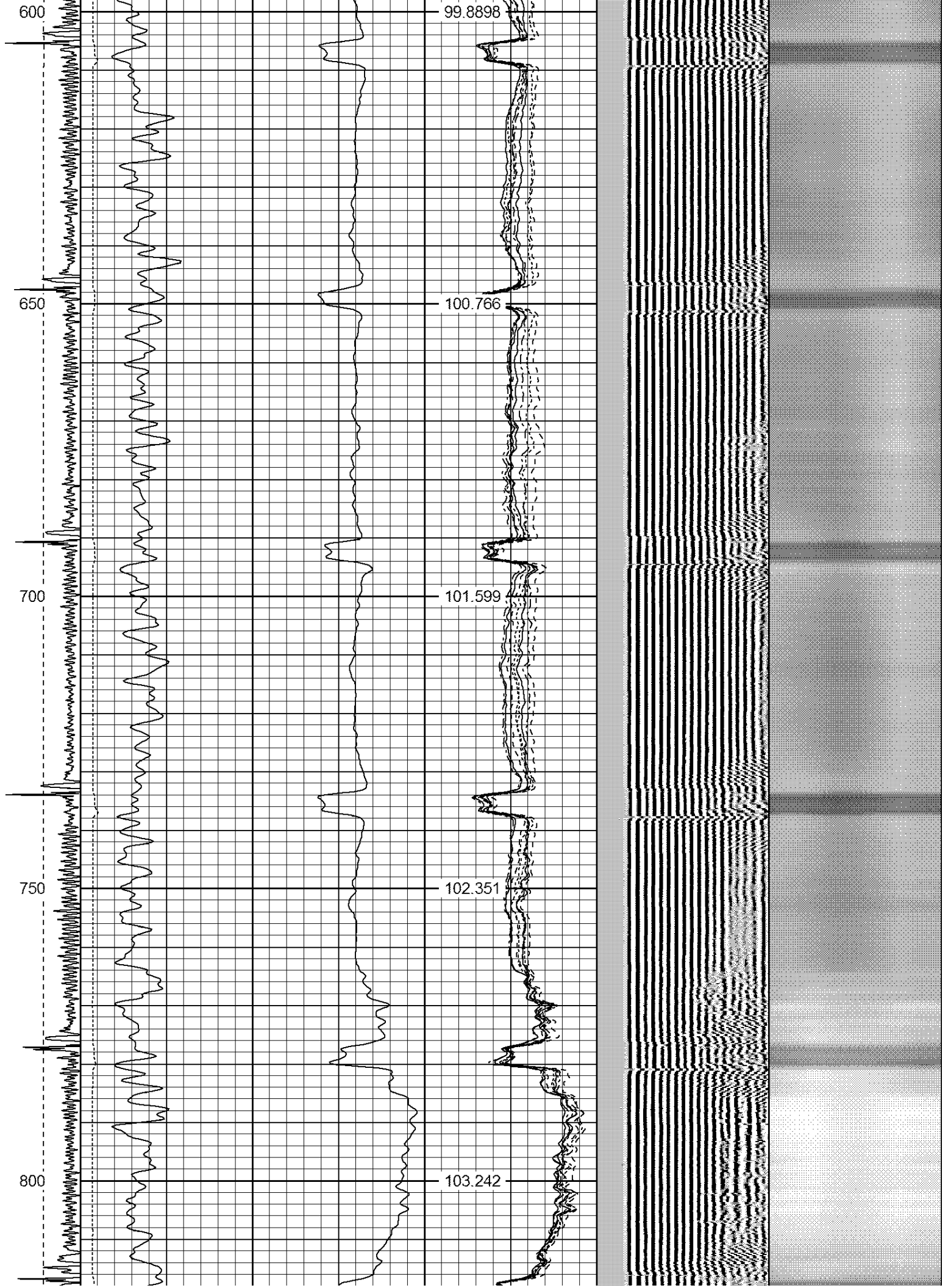
Database File: corbin d30-23d.db  
 Dataset Pathname: pass10  
 Presentation Format: ips\_rbt

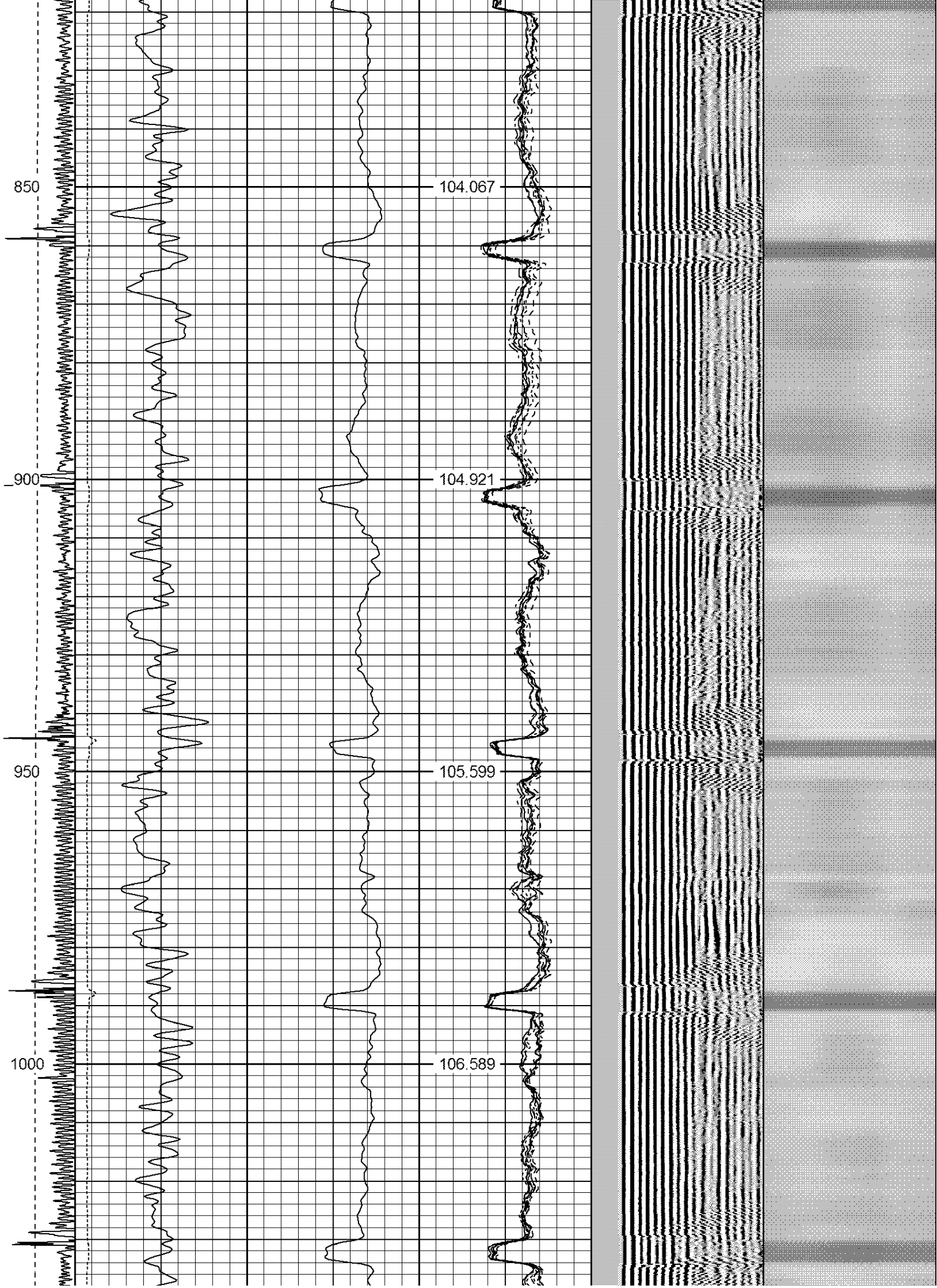
-9	CCL	1	200	TT (usec)	1000	0	AMP (mV)	100	0	AMPS1	100	200	VDL	1200	1	Cement Map	8
	LSPD		0	GR (GAPI)	200	0	AMPx5 (mV)	20	0	AMPS2	100				100		1
	(ft/min)		200	GR (GAPI)	400					0	AMPS3	100					
0		250								0	AMPS4	100					
										0	AMPS5	100					
										0	AMPS6	100					
										0	AMPS7	100					
										0	AMPS8	100					
											IntTemp						
											(degF)						

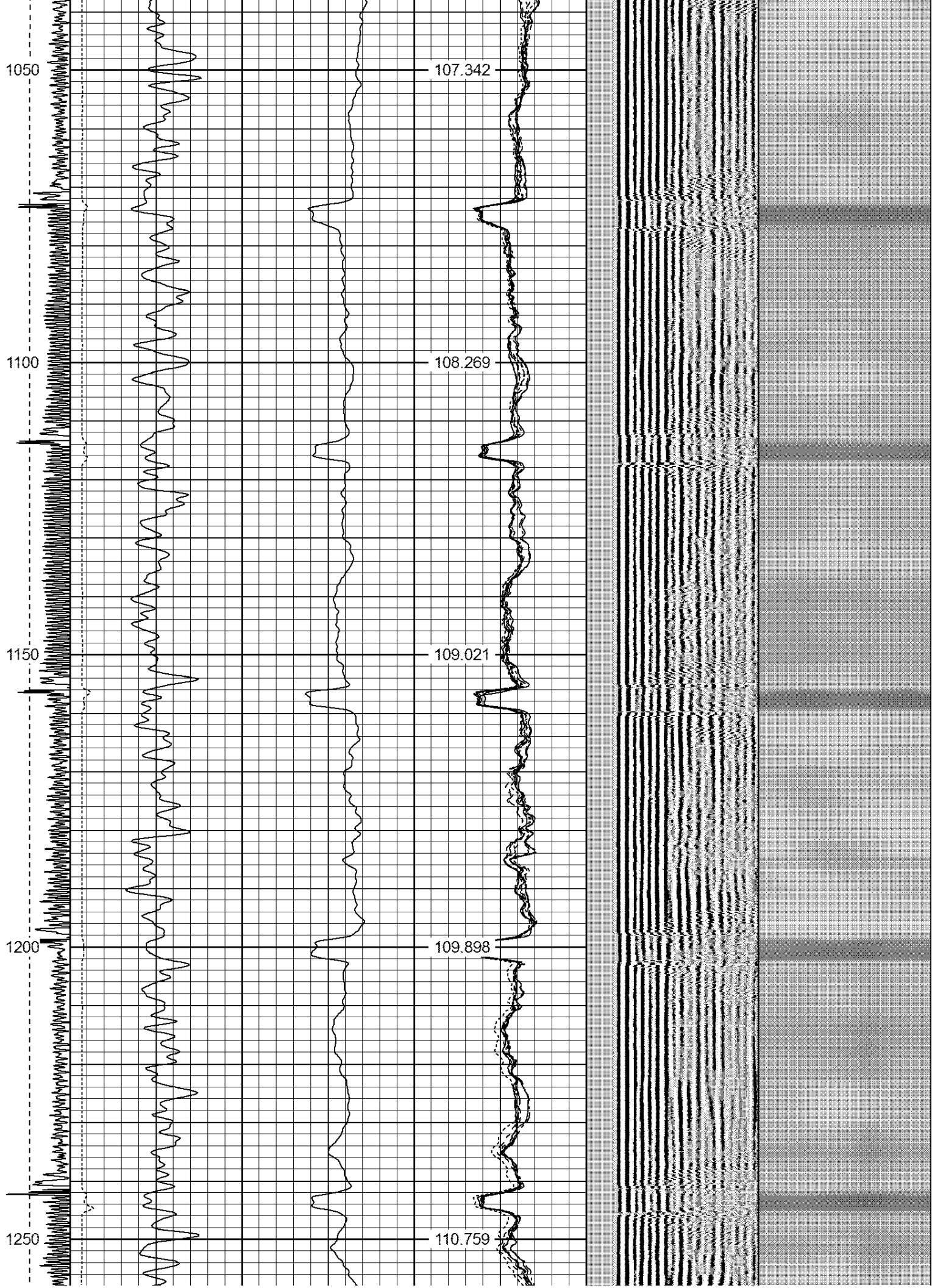




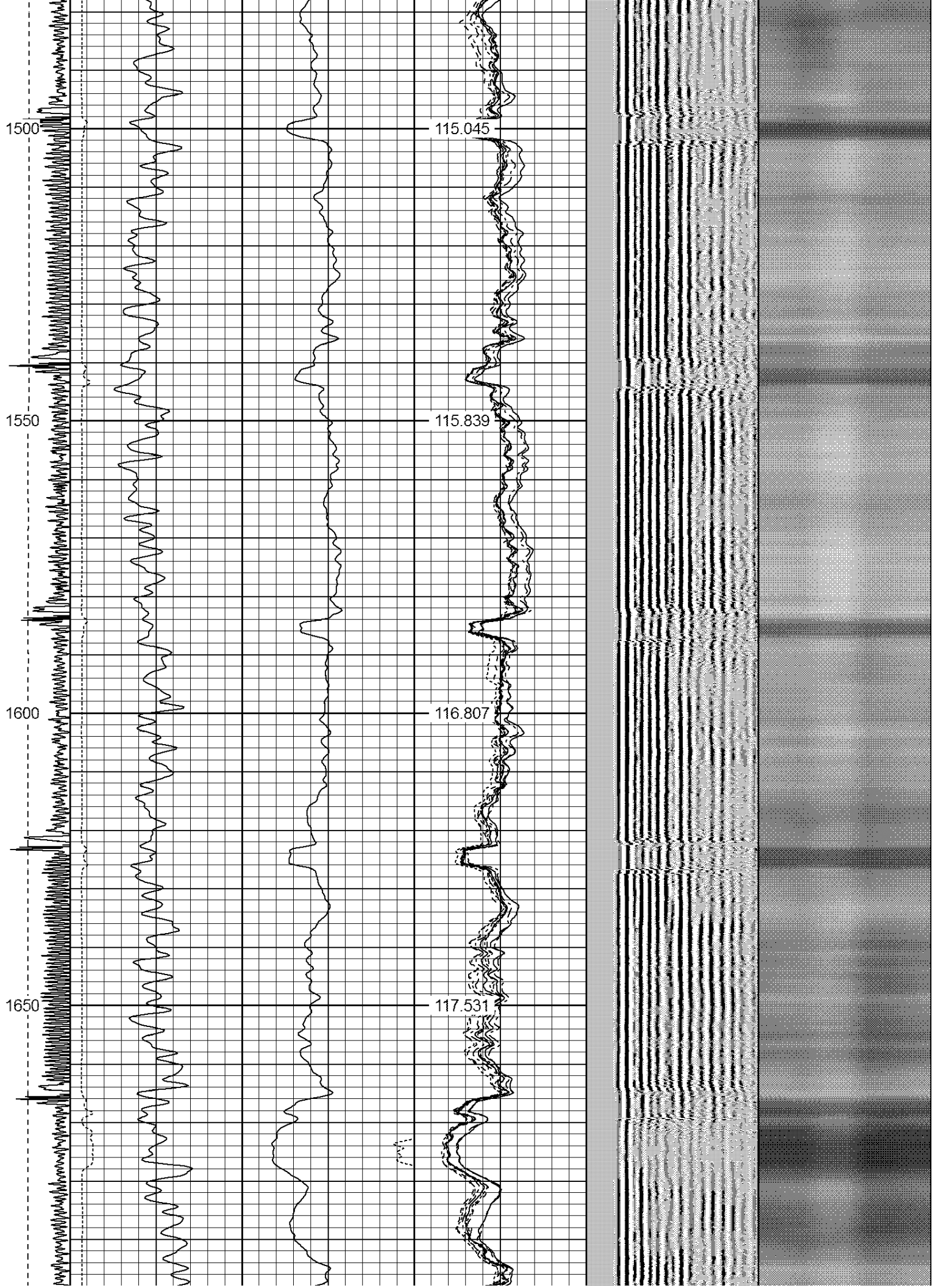


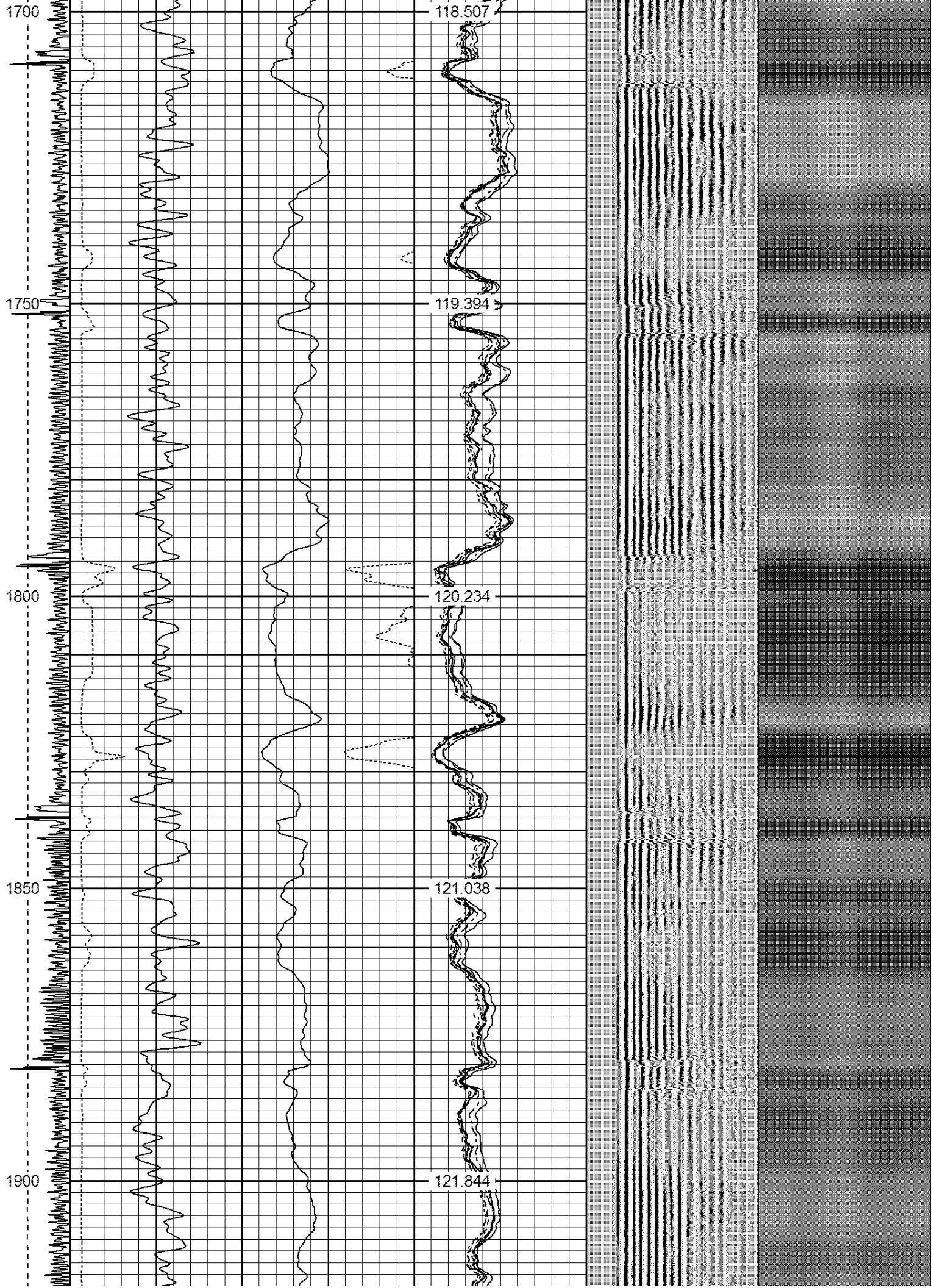


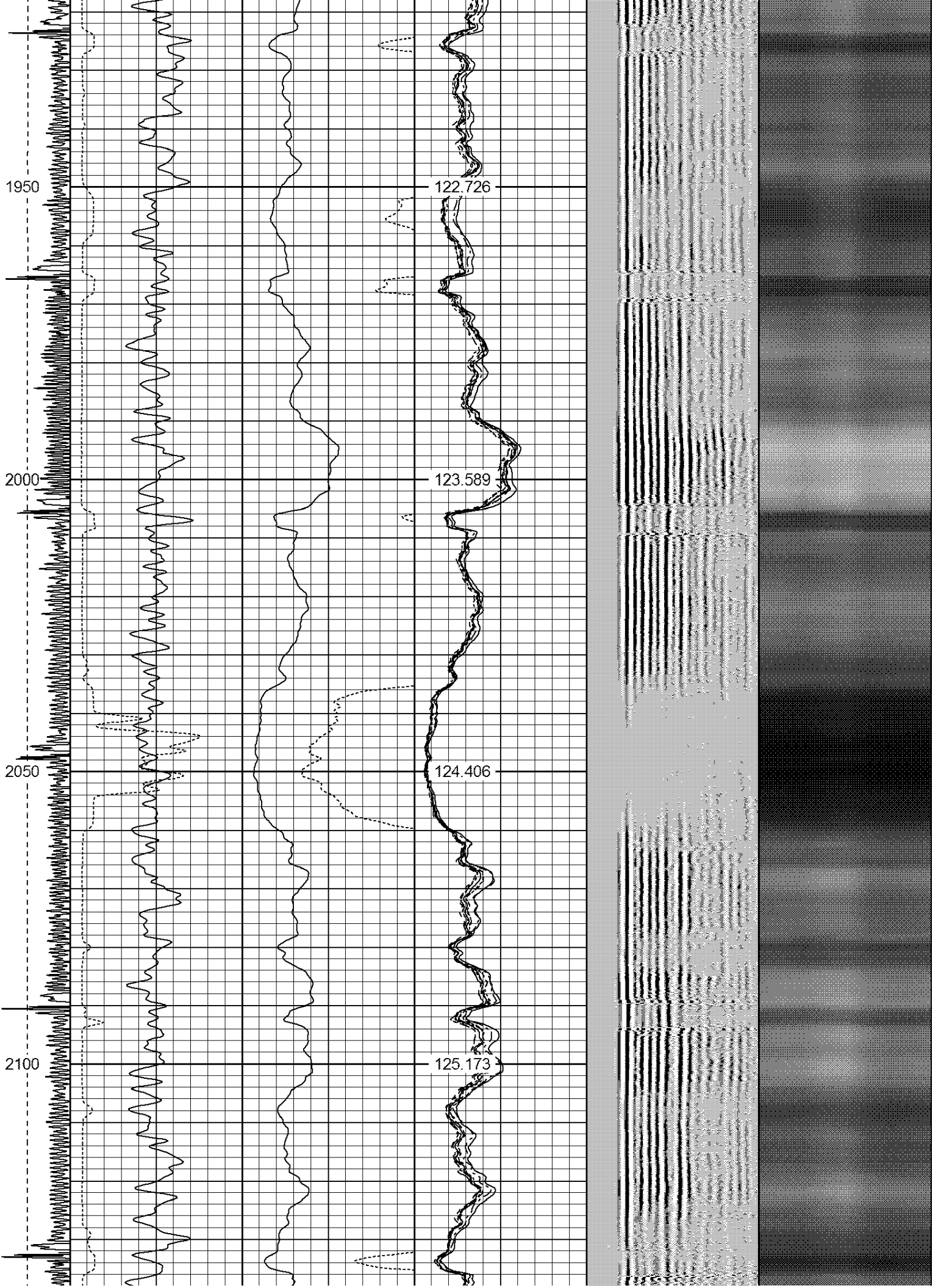






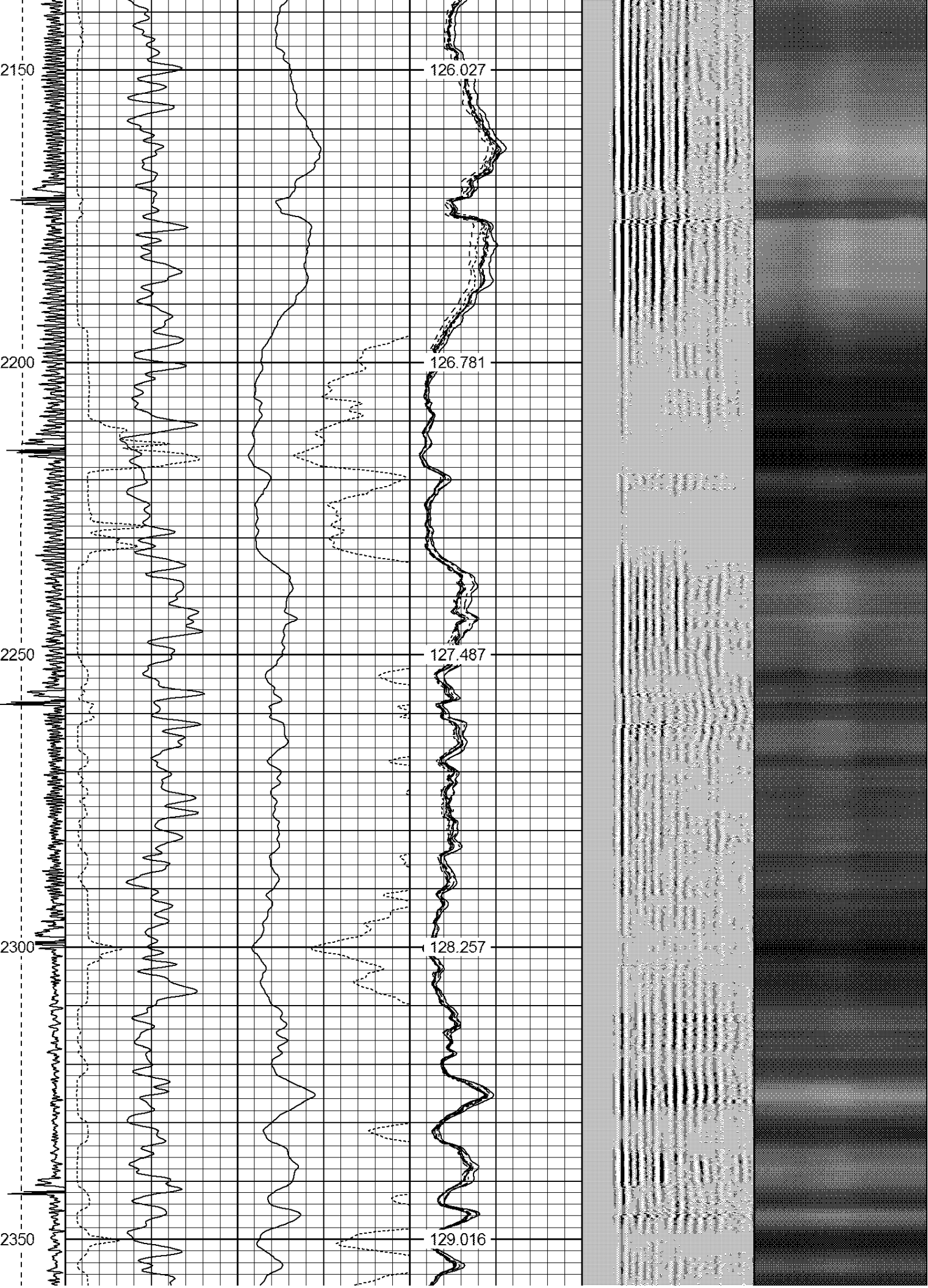


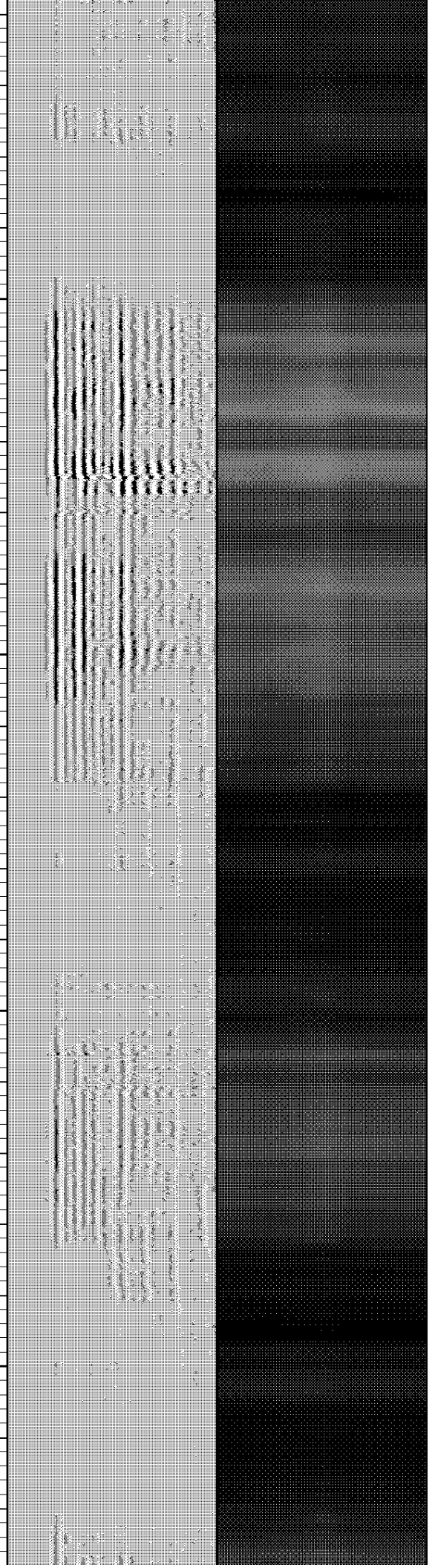
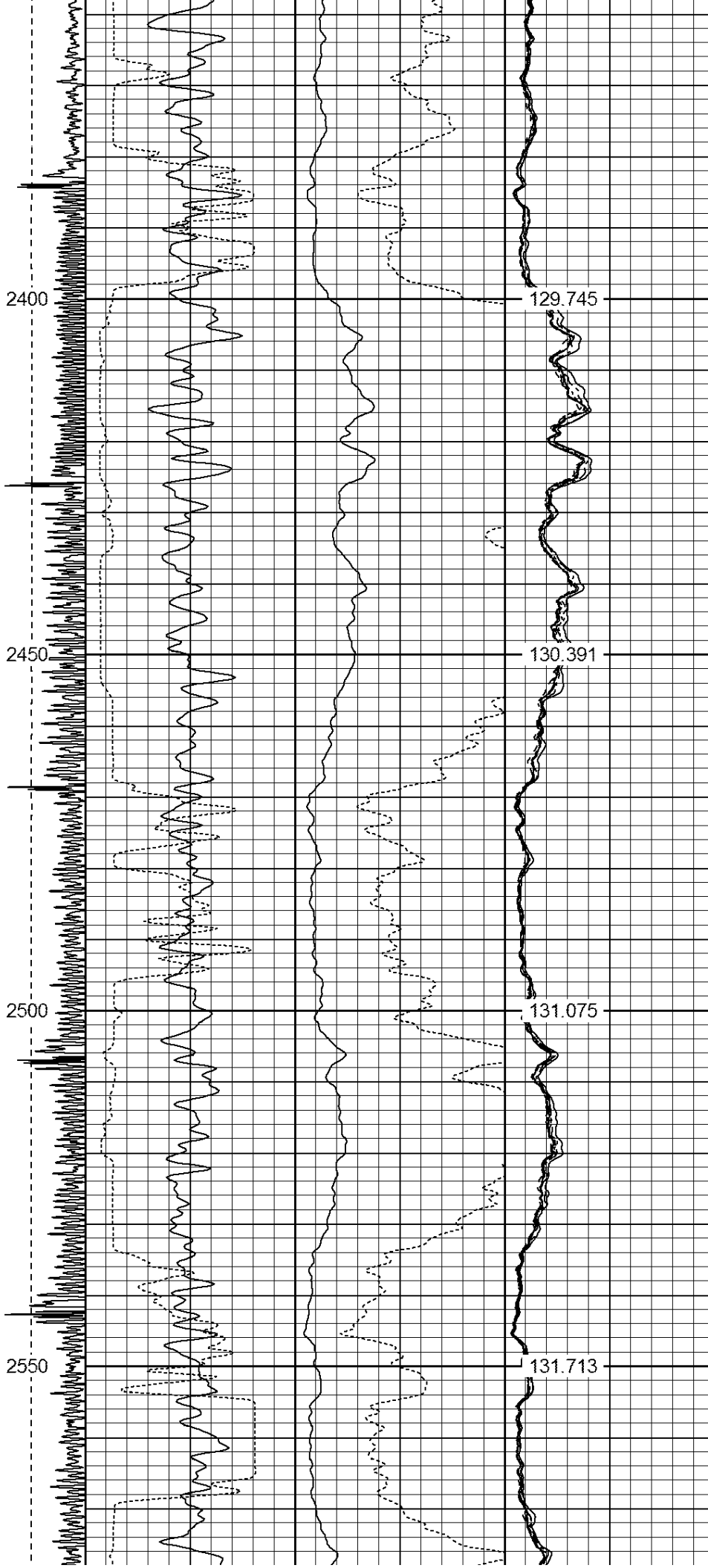


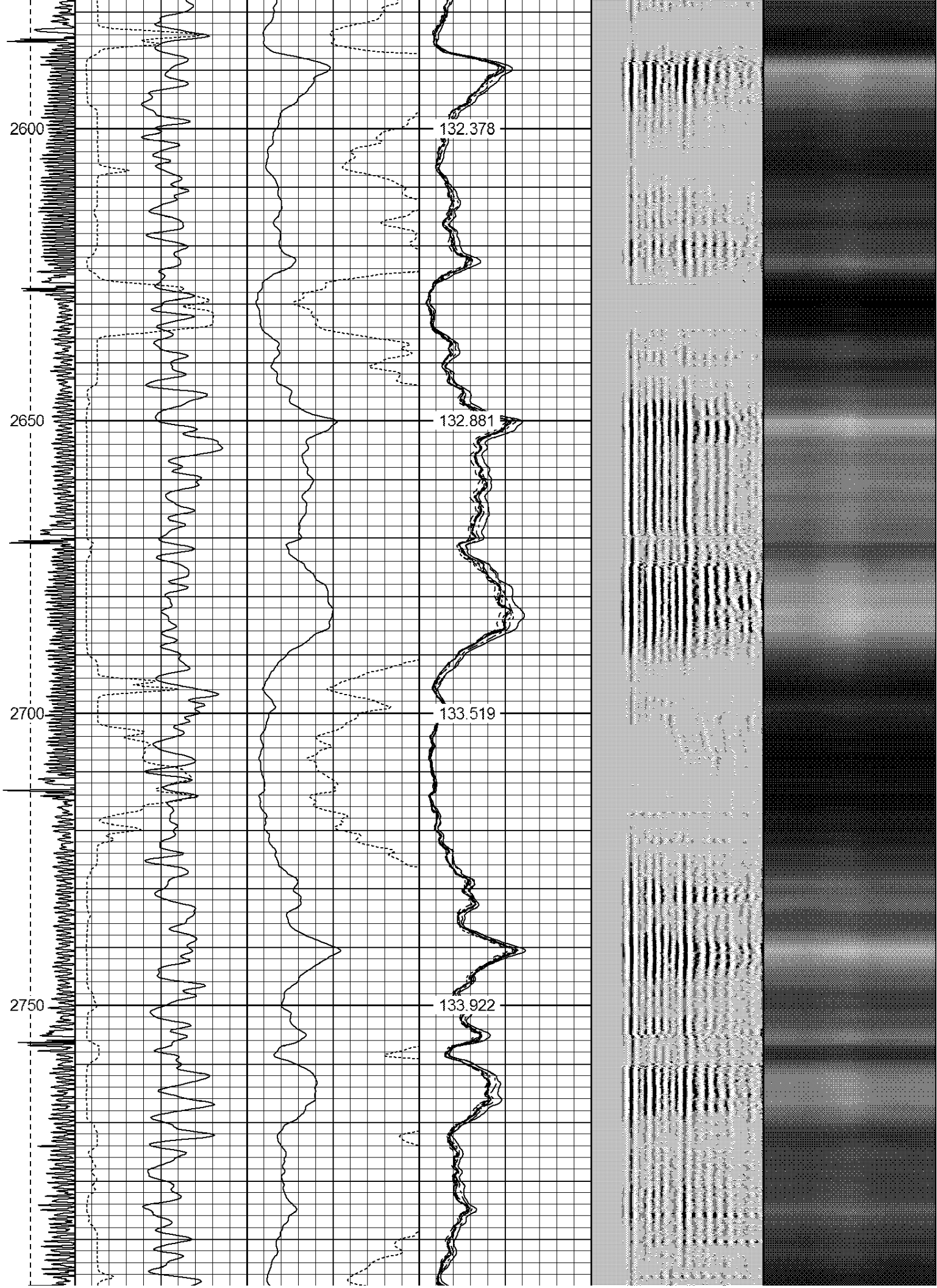


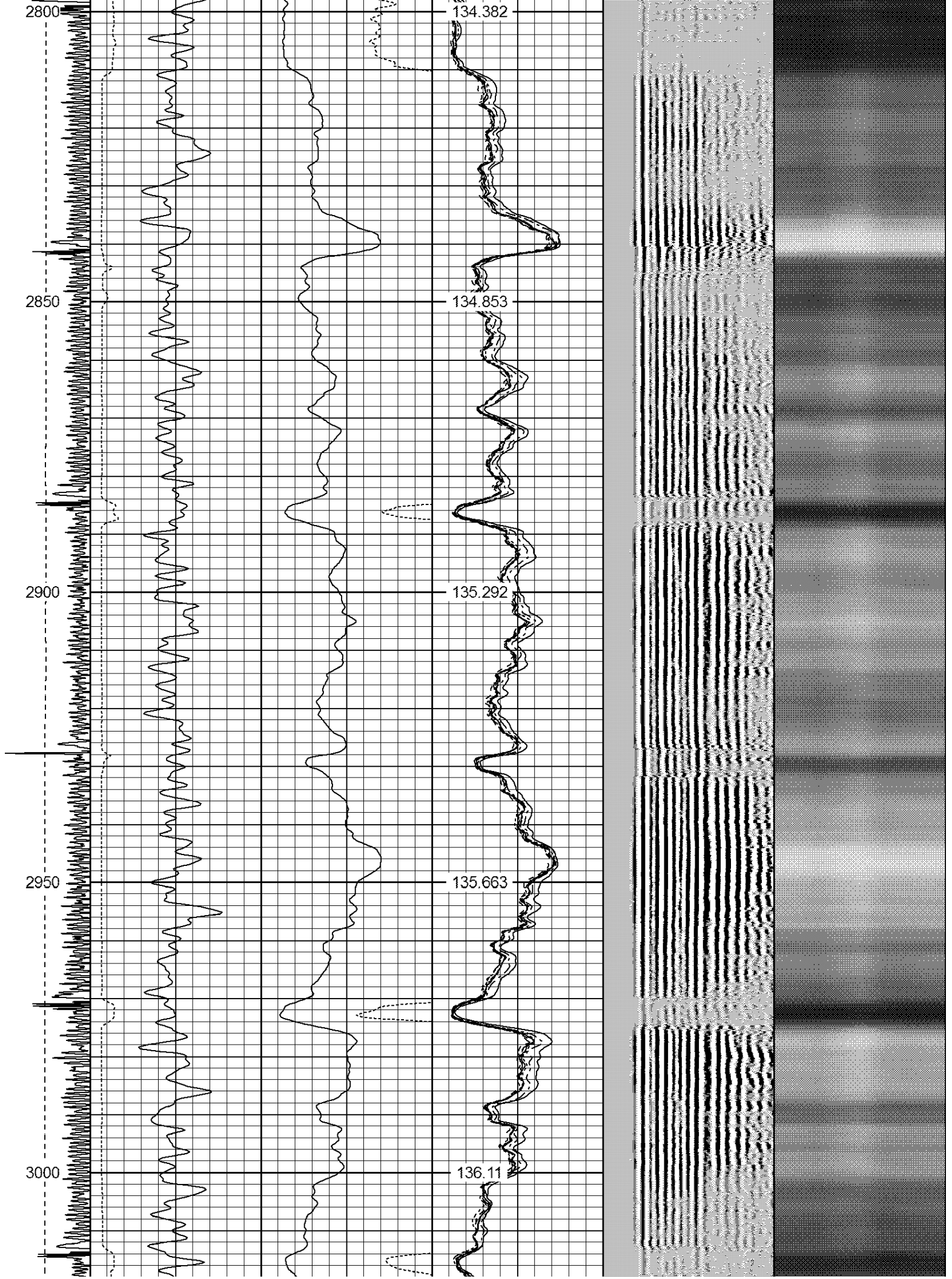
2150  
2200  
2250  
2300  
2350

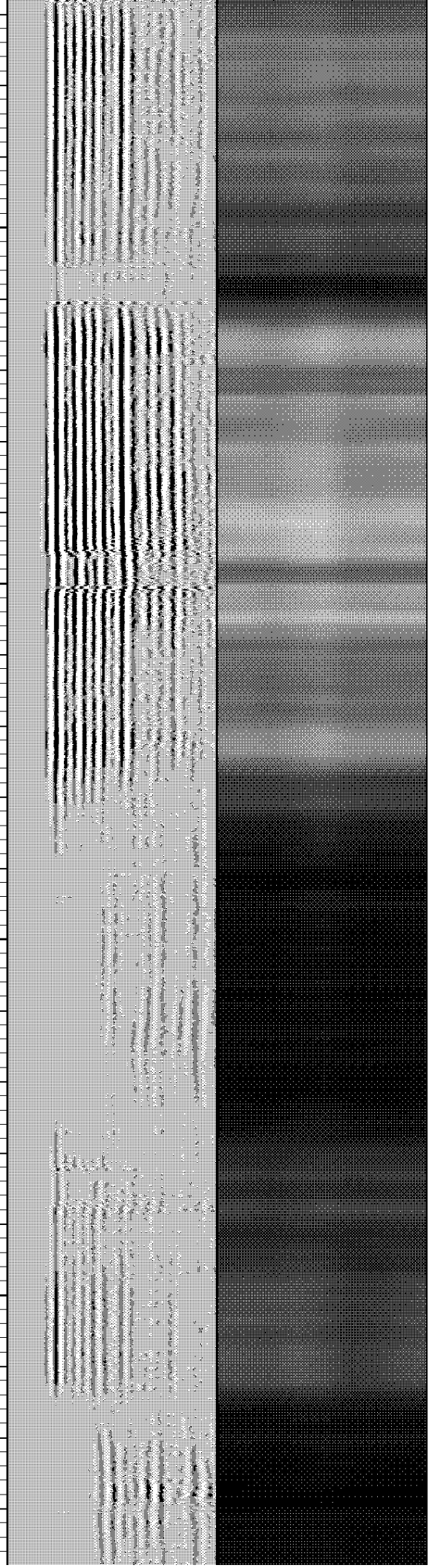
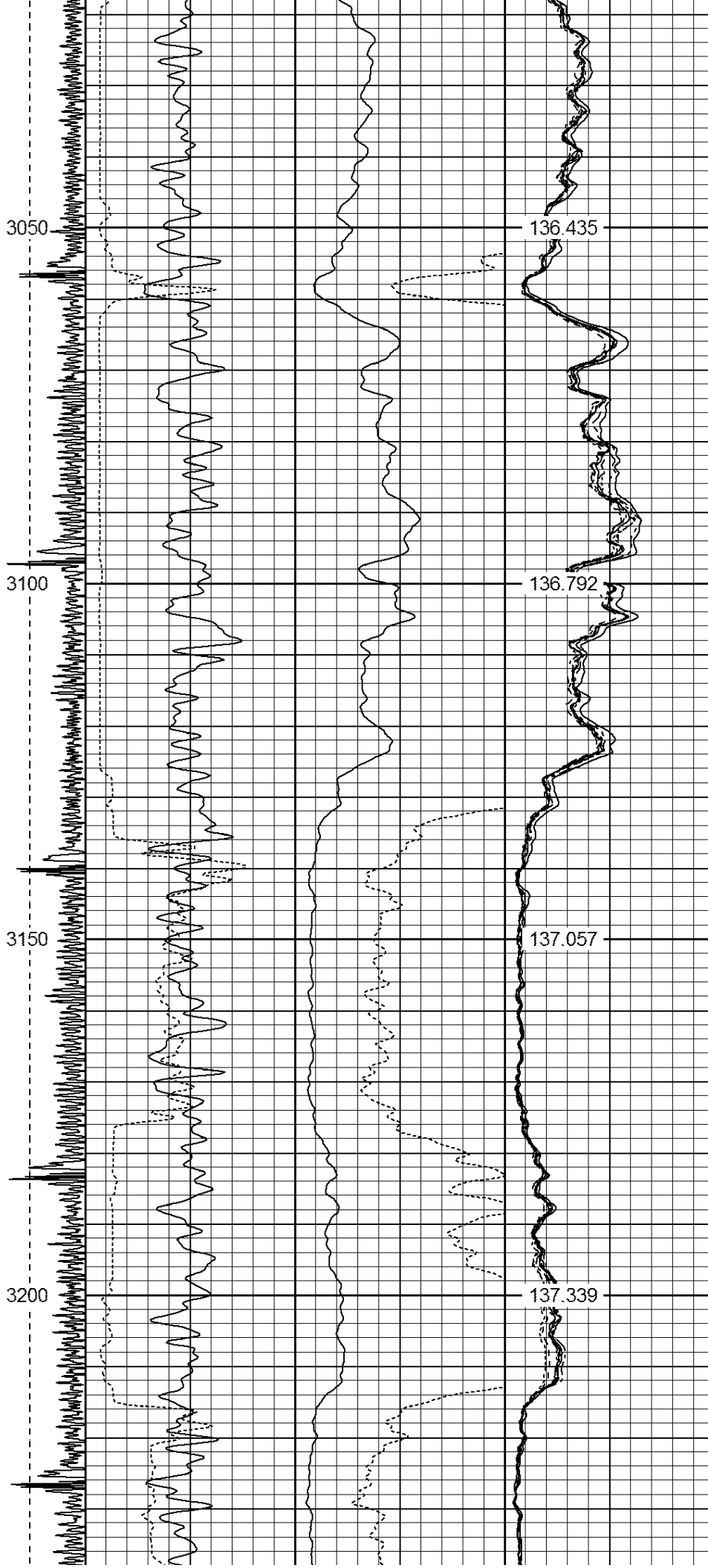
126.027  
126.781  
127.487  
128.257  
129.016











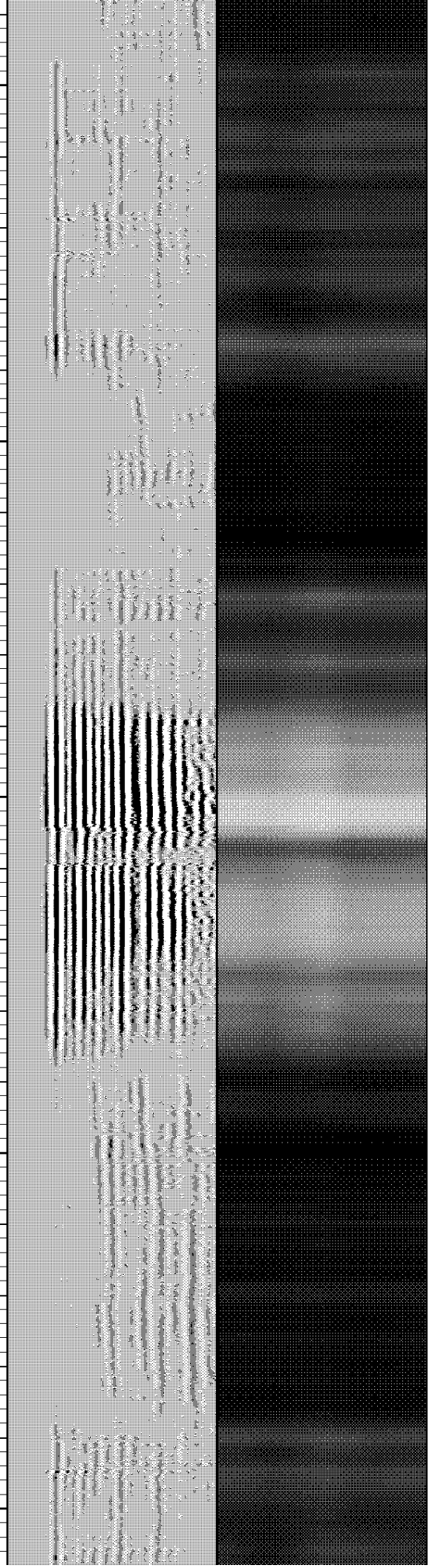
3250 137.618

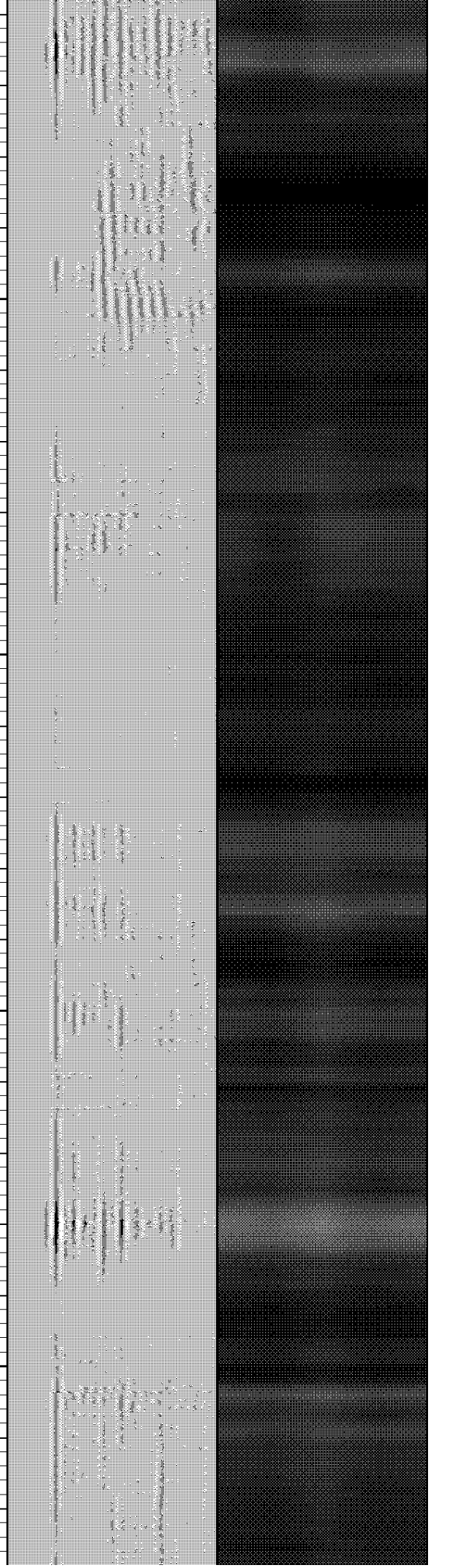
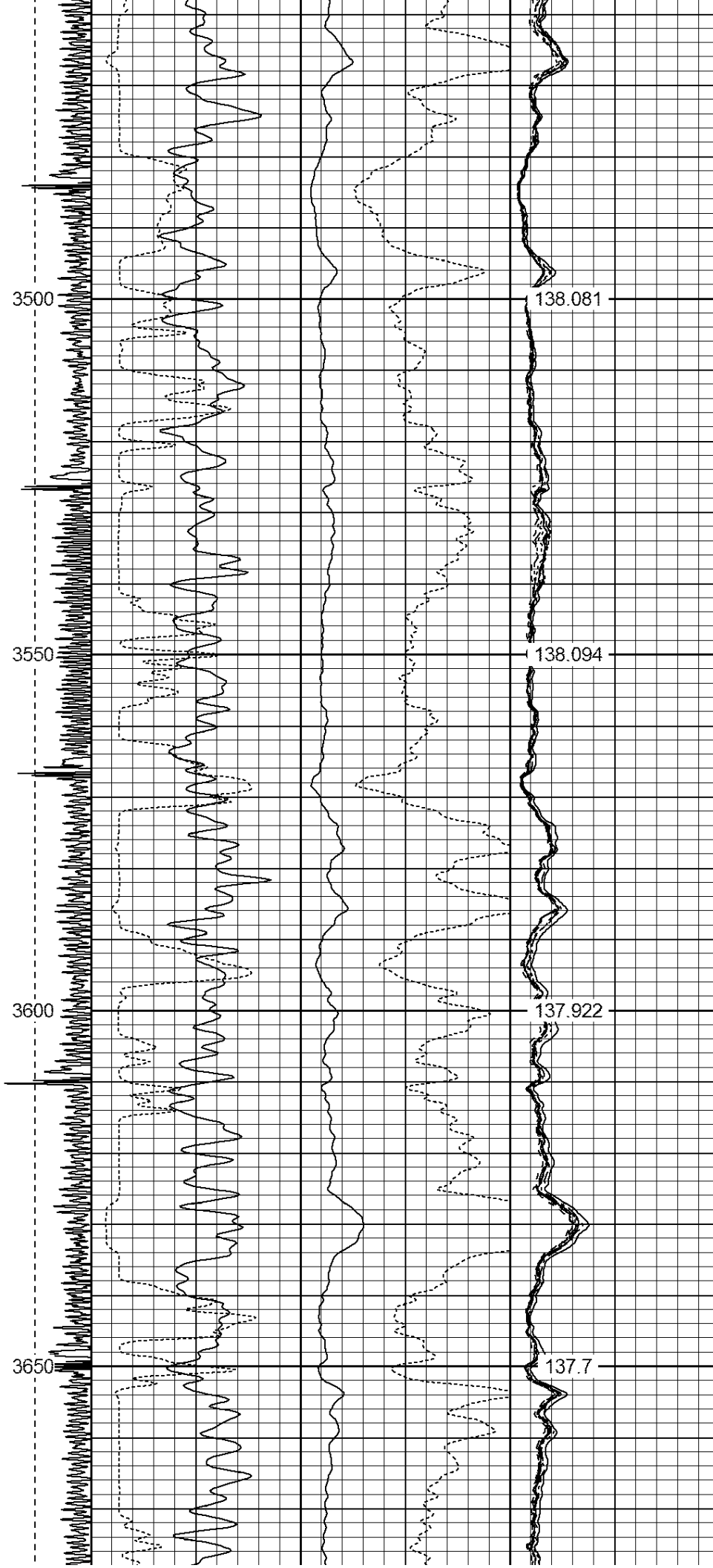
3300 137.828

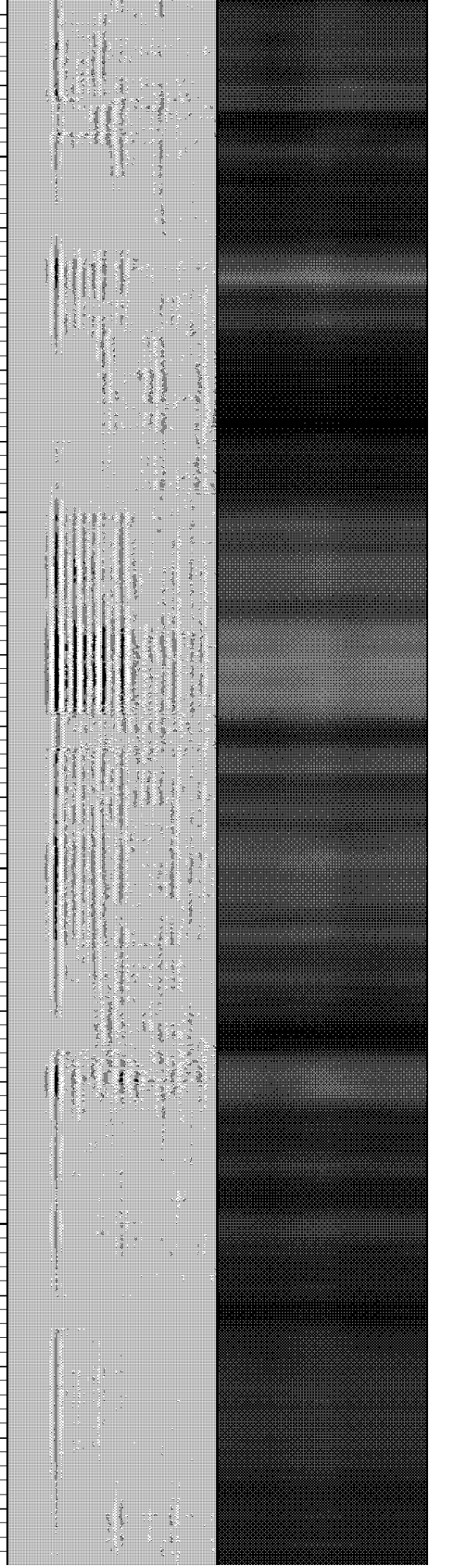
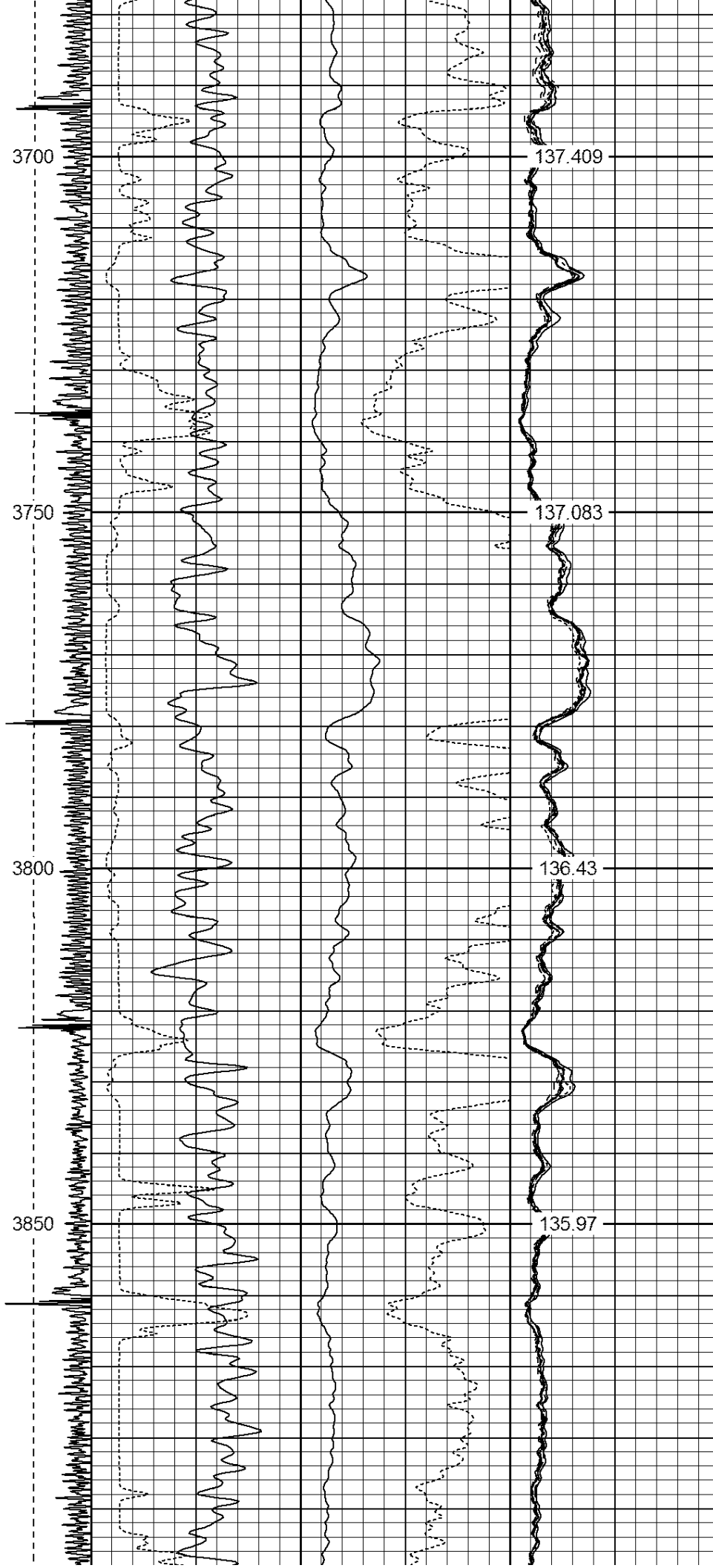
3350 137.987

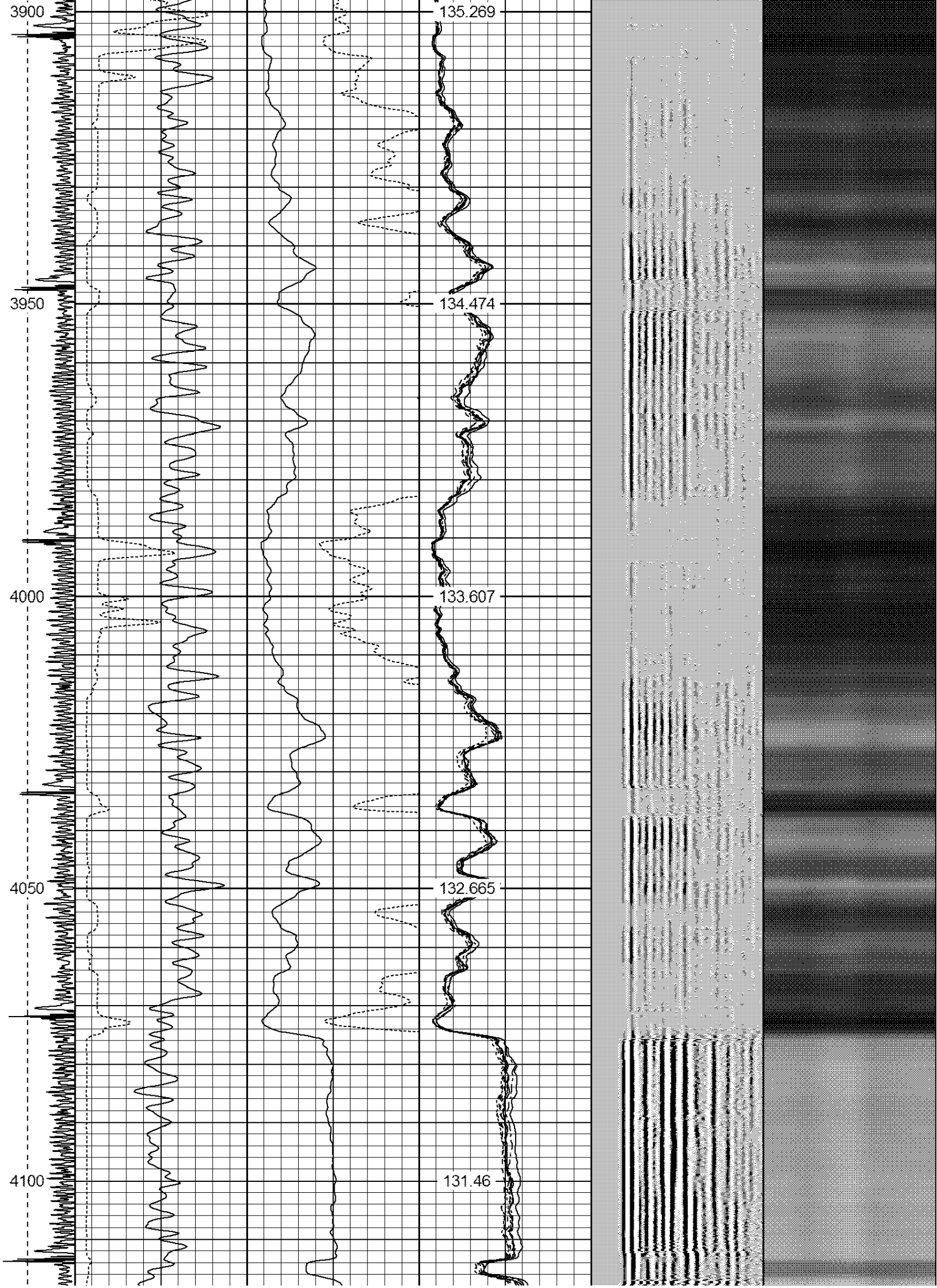
3400 137.983

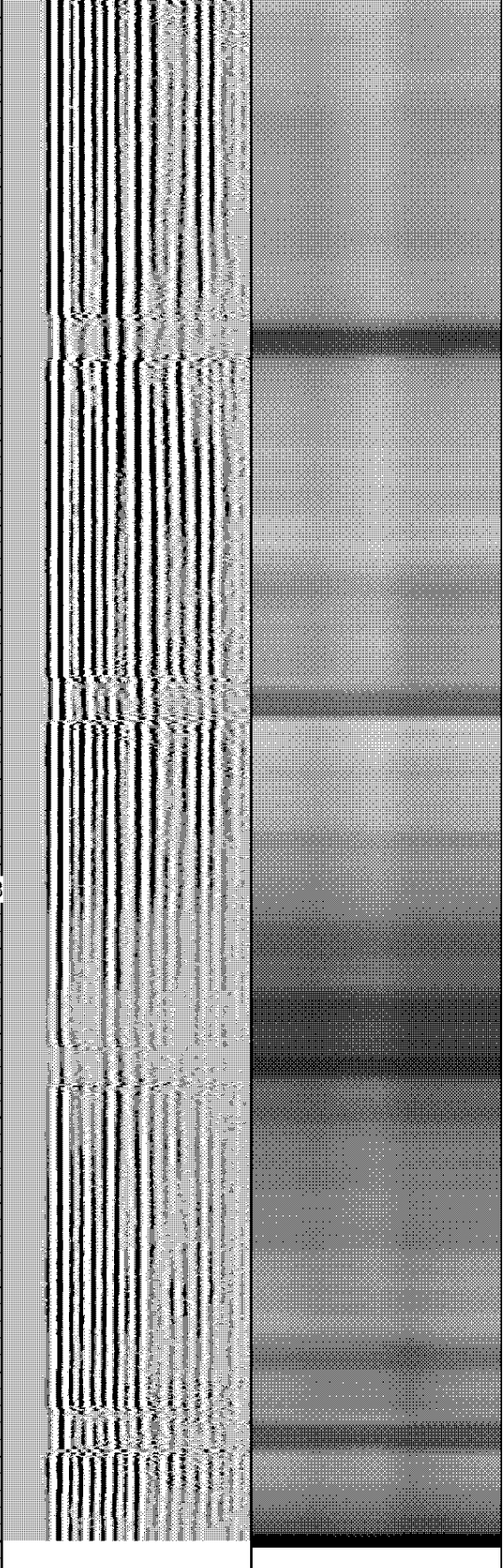
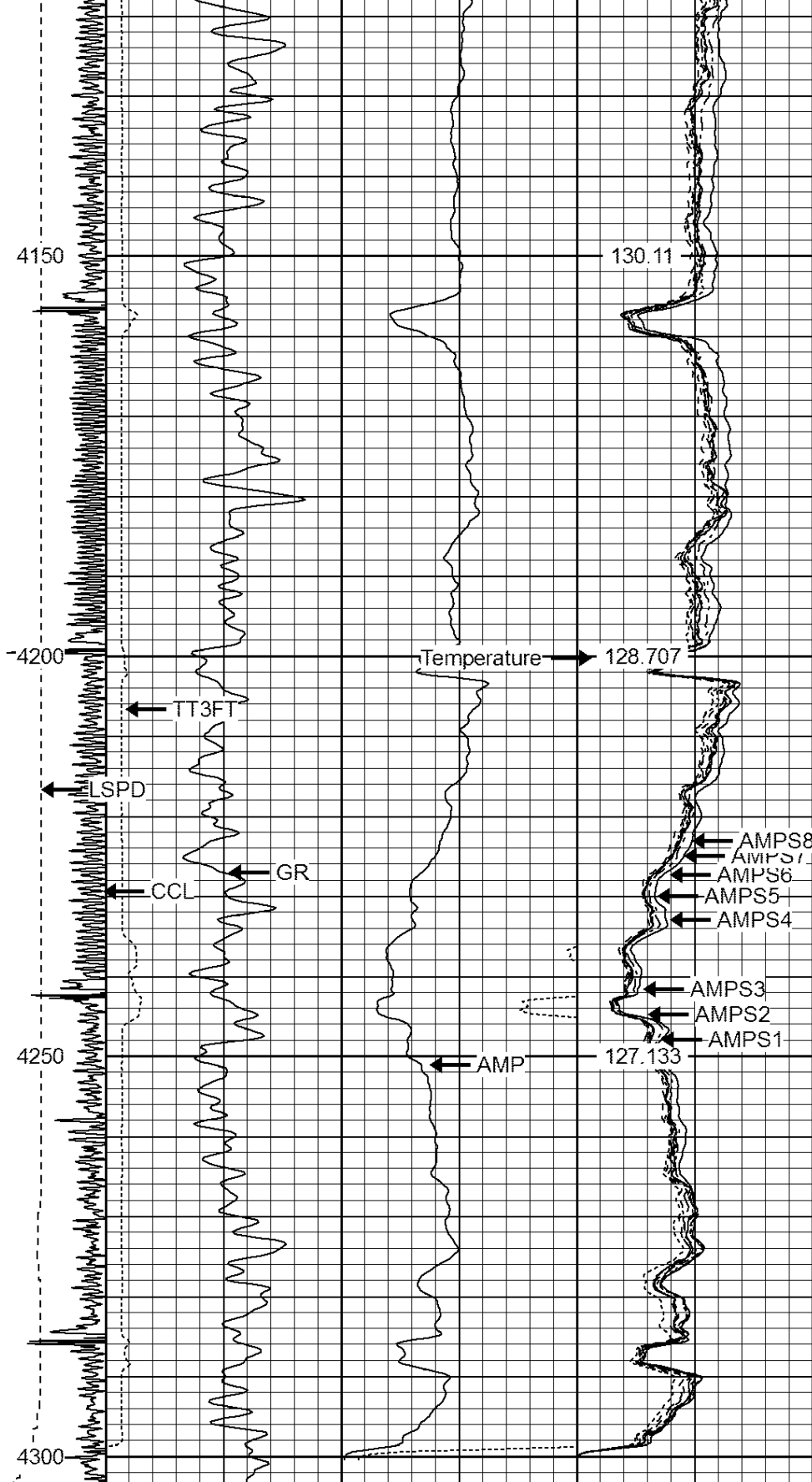
3450 138.108











-9	CCL	1	200	TT (usec)	1000	0	AMP (mV)	100	0	AMPS1	100	200	VDL	1200	1	Cement Map	8
	LSPD		0	GR (GAPI)	200	0	AMPx5 (mV)	20	0	AMPS2	100				100		1
	(ft/min)		200	GR (GAPI)	400					AMPS3	100						
0	250									AMPS4	100						
										AMPS5	100						
										AMPS6	100						
										AMPS7	100						

0	AMPS8	100
IntTemp		
(degF)		

Calibration Report

Database File: corbin d30-23d.db  
 Dataset Pathname: pass10  
 Dataset Creation: Mon Jun 06 13:20:46 2022 by Log SCH 111116

Gamma Ray Calibration Report

Serial Number: 275  
 Tool Model: Probe  
 Performed: Wed Nov 06 11:09:15 2013

Calibrator Value: 100.0 GAPI

Background Reading: 35.0 cps  
 Calibrator Reading: 160.0 cps

Sensitivity: 0.9000 GAPI/cps

Compensated Neutron Calibration Report

Serial Number: 275  
 Tool Model: Probe\_B

CALIBRATION Wed Jul 30 08:47:19 2008

Detector	Readings	Target	Normalization
Short Space	5001.20 cps	0.00 cps	1.0000
Long Space	1029.31 cps	0.00 cps	1.0000

PRE-SURVEY VERIFICATION

Detector	Readings	Measured	Target
1) Short Space	cps		
Long Space	cps	pu	pu
2) Short Space	cps		
Long Space	cps	pu	
3) Short Space	cps		
Long Space	cps	pu	

POST-SURVEY VERIFICATION

Detector	Readings	Measured	Target
1) Short Space	cps		
Long Space	cps	pu	pu
2) Short Space	cps		
Long Space	cps	pu	pu
3) Short Space	cps		
Long Space	cps	pu	pu

Segmented Cement Bond Log Calibration Report

Serial Number: Base  
 Tool Model: Probe

Calibration Casing Diameter: 4.500 in

Master Calibration, performed Mon Jun 06 13:09:24 2022:

	Raw (v)		Calibrated (mv)		Results	
	Zero	Cal	Zero	Cal	Gain	Offset
3'	0.000	1.199	1.500	81.196	66.478	1.500
CAL	0.000	1.505				
5'	0.000	0.863	1.500	81.196	92.303	1.500
SUM						
S1	0.000	1.245	0.500	81.196	64.805	0.500
S2	0.000	1.167	0.500	81.196	69.156	0.500
S3	0.000	1.207	0.500	81.196	66.862	0.500
S4	0.000	1.445	0.500	81.196	55.859	0.500
S5	0.000	1.526	0.500	81.196	52.888	0.500
S6	0.000	1.435	0.500	81.196	56.244	0.500
S7	0.000	1.318	0.500	81.196	61.221	0.500
S8	0.000	1.291	0.500	81.196	62.515	0.500

Internal Reference Calibration, performed Tue Jun 05 07:53:42 2012:

	Raw (v)		Calibrated (v)		Results	
	Zero	Cal	Zero	Cal	Gain	Offset
CAL	0.000	0.000	0.000	1.505	1.000	0.000

Air Zero Calibration, performed Mon Jun 06 12:44:14 2022:

	Raw (v)		Calibrated (v)		Results	
	Zero		Zero		Gain	Offset
3'	0.000		0.000			0.000
5'	0.000		0.000			0.000
SUM						
S1	0.000		0.000			0.000
S2	0.000		0.000			0.000
S3	0.000		0.000			0.000
S4	0.000		0.000			0.000
S5	0.000		0.000			0.000
S6	0.000		0.000			0.000
S7	0.000		0.000			0.000
S8	0.000		0.000			0.000



Company CHEVRON  
 Well CORBIN D30-23D  
 Field WATTENBERG  
 County WELD  
 State CO