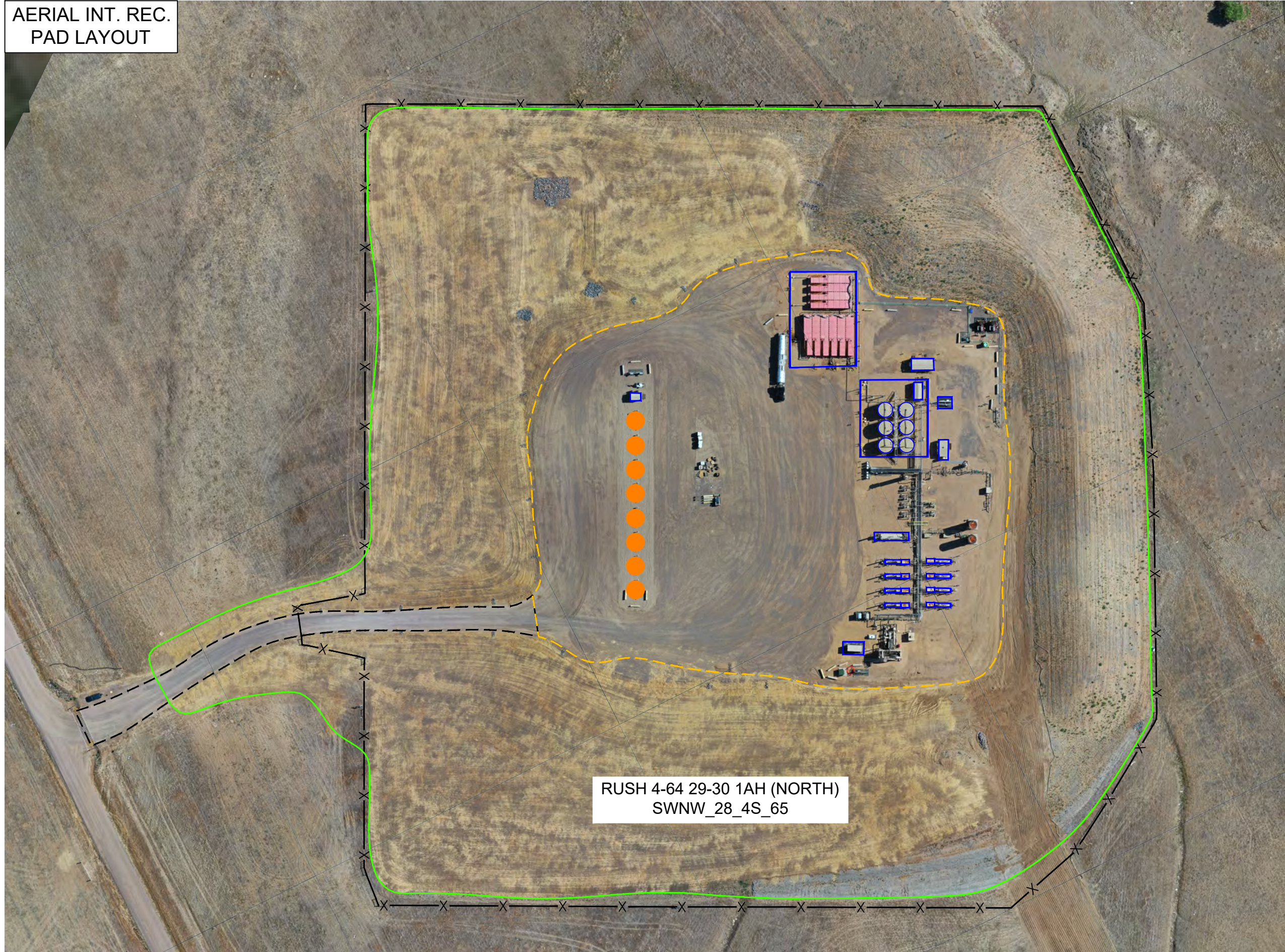


AERIAL INT. REC.
PAD LAYOUT



RUSH 4-64 29-30 1AH (NORTH)
SWNW_28_4S_65

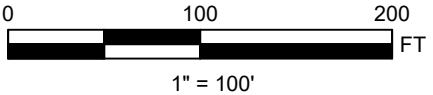
NOTES

**UPDATED AERIAL IMAGERY COLLECTED BY RPG
RESOURCES BY USE OF UAV IN JULY 2022**

AREA INSIDE FENCE: 15.01 ACRES

FIELD OBSERVED DISTURBED AREA: 14.99 ACRES

INT. RECLAMATION PAD FOOTPRINT AREA: 4.34 ACRES



LEGEND

- ACCESS ROAD
- X-X- EXISTING FENCE LINE
- FIELD OBSERVED DISTURBED AREA
- - - INTERIM RECLAMATION PAD EDGE
- WELL HEAD
- EXISTING FACILITIES/EQUIPMENT COMPONENT

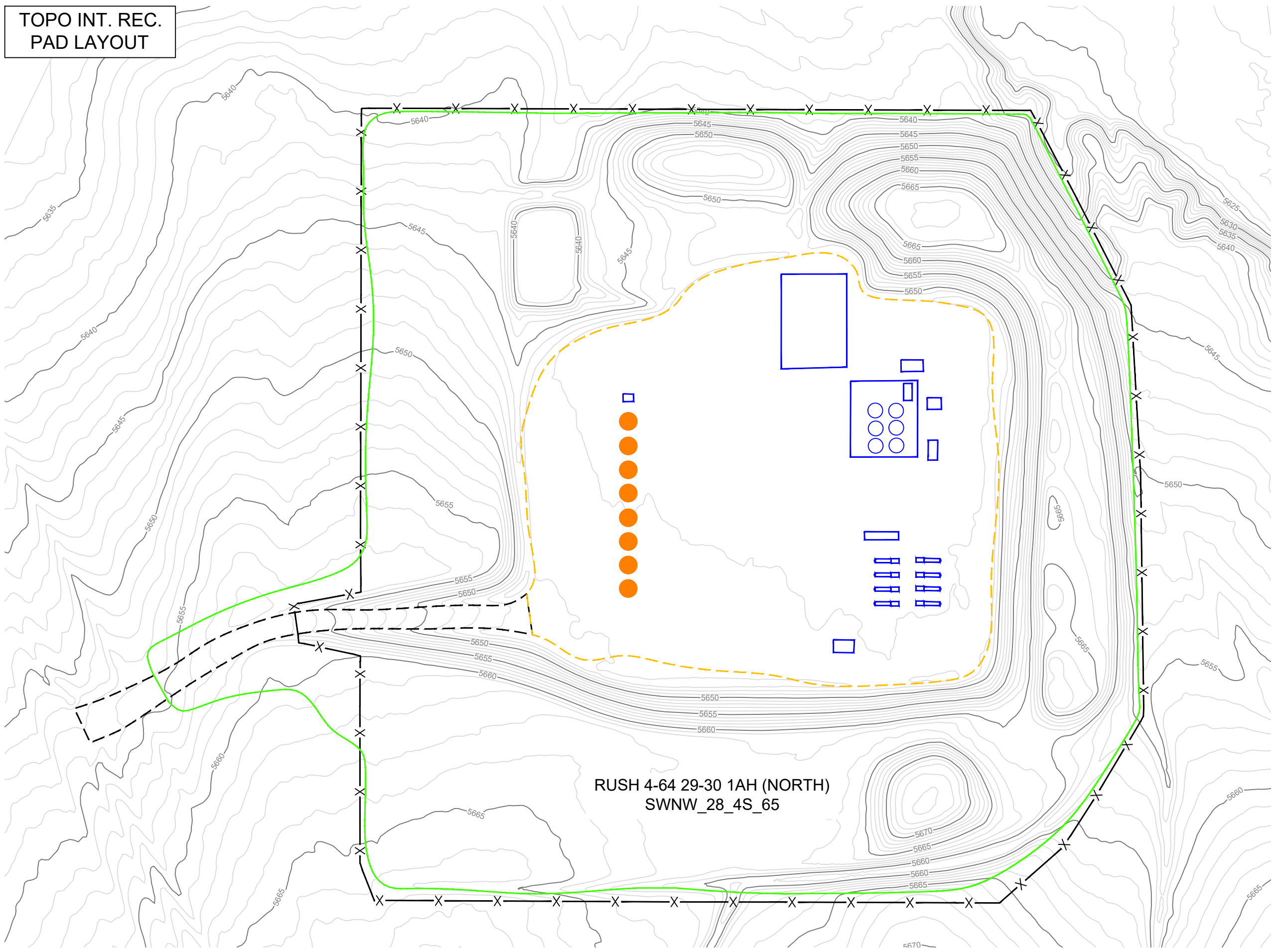


RUSH 4-64 29-30 1AH (NORTH)
INTERIM RECLAMATION EXHIBITS

SECTION 30, TOWNSHIP 4 S, RANGE 65 W,
ARAPAHOE COUNTY, COLORADO

SHEET NAME:	SHEET NO.
AERIAL OVERVIEW	1 OF 2

TOPO INT. REC.
PAD LAYOUT



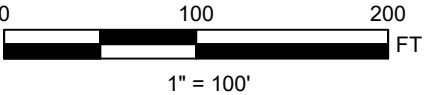
NOTES

**UPDATED TOPO DATA COLLECTED AND PROCESSED
BY RPG RESOURCES BY USE OF UAV IN JULY 2022**

AREA INSIDE FENCE: 15.01 ACRES

FIELD OBSERVED DISTURBED AREA : 14.99 ACRES

INT. RECLAMATION PAD FOOTPRINT AREA: 4.34 ACRES



LEGEND

- 4400 MAJOR CONTOUR
- MINOR CONTOUR
- ACCESS ROAD
- EXISTING FENCE LINE
- FIELD OBSERVED DISTURBED AREA
- INTERIM RECLAMATION PAD EDGE
- WELL HEAD
- EXISTING FACILITIES/EQUIPMENT COMPONENT



RUSH 4-64 29-30 1AH (NORTH)
INTERIM RECLAMATION EXHIBITS

SECTION 30, TOWNSHIP 4 S, RANGE 65 W,
ARAPAHOE COUNTY, COLORADO

SHEET NAME:	SHEET NO.
TOPO OVERVIEW	2 OF 2