

VERDAD RESOURCES

**WATTENBERG FIELD
2N-64W-28 GEORGENE PAD
GEORGENE 2833-07H**

Plan C

Plan: Design #2

Standard Planning Report

09 August, 2022

Project: WATTENBERG FIELD
Site: 2N-64W-28 GEORGENE PAD
Well: GEORGENE 2833-07H
Wellbore: Plan C
Design: Design #2

VERDAD RESOURCES

CASING DETAILS

TVD	MD	Name	Size
2378.00	2429.73	9 5/8"	9-5/8

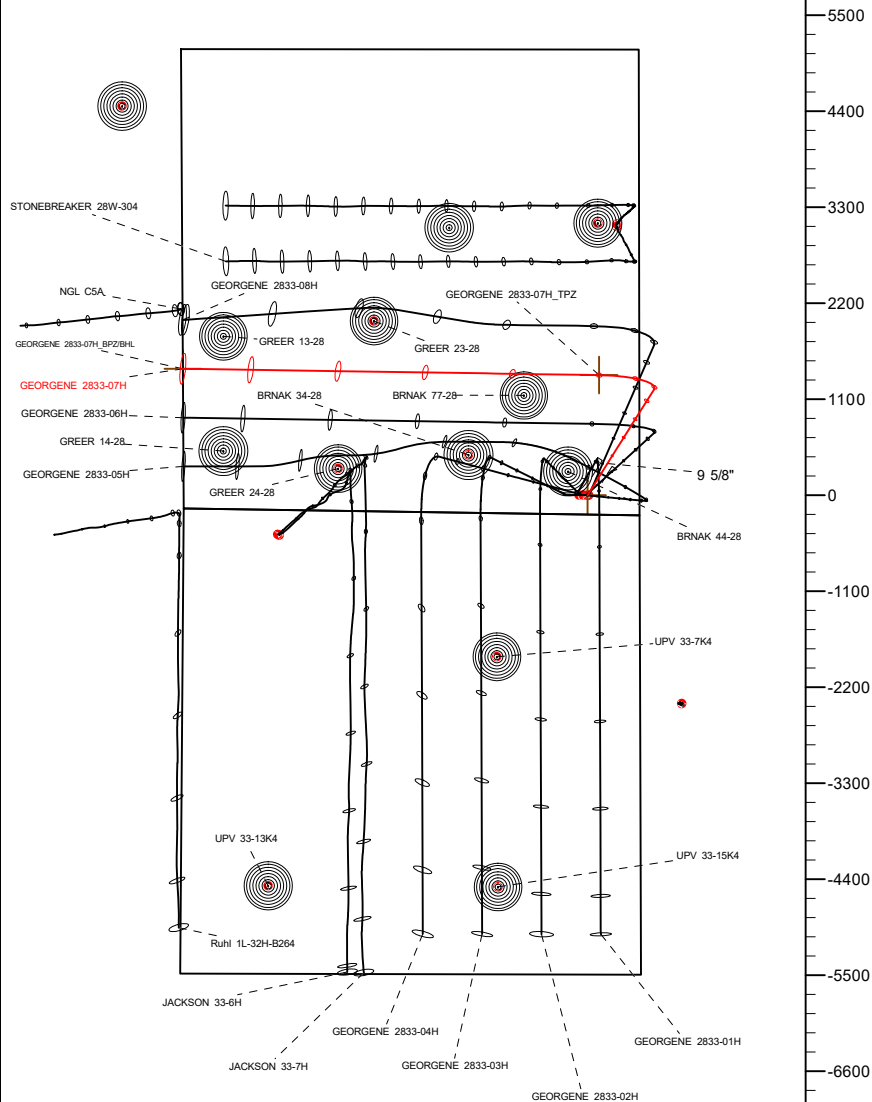
SHL
222' FSL
595' FEL

LP/TPZ
1600' FSL
460' FEL

BPZ/BHL
1600' FSL
0' FWL

West(-)/East(+) (2200 usft/in)

-5500 -4400 -3300 -2200 -1100 0 1100 2200

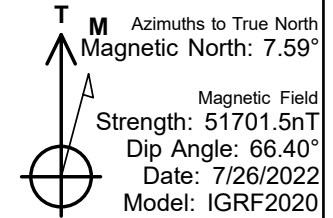
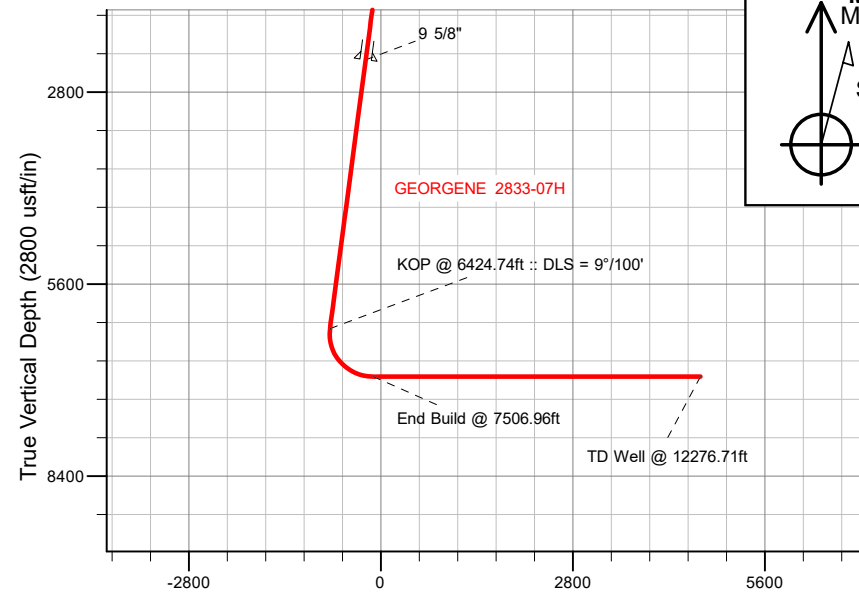


SECTION DETAILS

MD	Inc	Azi	TVD	+N/-S	+E/-W	Dleg	TFace	VSect	Target
0.00	0.00	0.00	0.00	0.00	0.00	0.00	0.00	0.00	
297.70	0.00	0.00	297.70	0.00	0.00	0.00	0.00	0.00	
1016.20	14.37	32.14	1008.69	75.89	47.68	2.00	32.14	-46.51	
6424.74	14.37	32.14	6248.02	1212.49	761.78	0.00	0.00	-743.06	
7506.96	90.00	270.88	6950.00	1375.86	132.88	9.00	-120.46	-111.74	
12276.71	90.00	270.88	6950.00	1448.84	-4636.31	0.00	0.00	4658.01	GEORGENE 2833-07H_BPZ/BHL

WELLBORE TARGET DETAILS (LAT/LONG)

Name	TVD	Northing	Easting	Latitude	Longitude
GEORGENE 2833-07H_SHL	0.00	1281682.28	3266049.24	40.102693	-104.548895
GEORGENE 2833-07H_TPZ	6950.00	1283059.58	3266167.38	40.106470	-104.548420
GEORGENE 2833-07H_BPZ/BHL	6950.00	1283081.31	3261397.66	40.106669	-104.565470



WELL DETAILS: GEORGENE 2833-07H

GL = 5018'

RKB = 24' @ 5042.00usft (RIG)

Plan: Design #2 (GEORGENE 2833-07H/Plan C)

Date: 8/9/2022

Planning Report

Database:	EDM 5000.16 Single User Db	Local Co-ordinate Reference:	Well GEORGENE 2833-07H
Company:	VERDAD RESOURCES	TVD Reference:	RKB = 24' @ 5042.00usft (RIG)
Project:	WATTENBERG FIELD	MD Reference:	RKB = 24' @ 5042.00usft (RIG)
Site:	2N-64W-28 GEORGENE PAD	North Reference:	True
Well:	GEORGENE 2833-07H	Survey Calculation Method:	Minimum Curvature
Wellbore:	Plan C		
Design:	Design #2		

Project	WATTENBERG FIELD		
Map System:	US State Plane 1983	System Datum:	Mean Sea Level
Geo Datum:	North American Datum 1983		
Map Zone:	Colorado Northern Zone		

Site	2N-64W-28 GEORGENE PAD			
Site Position:		Northing:	1,281,723.49 usft	Latitude: 40.102807
From:	Lat/Long	Easting:	3,266,028.51 usft	Longitude: -104.548967
Position Uncertainty:	0.00 usft	Slot Radius:	13-3/16 "	

Well	GEORGENE 2833-07H			
Well Position	+N/-S	0.00 usft	Northing:	1,281,682.28 usft
	+E/-W	0.00 usft	Easting:	3,266,049.24 usft
Position Uncertainty		3.28 usft	Wellhead Elevation:	usft
Grid Convergence:		0.61 °	Ground Level:	5,018.00 usft

Wellbore	Plan C				
Magnetics	Model Name	Sample Date	Declination (°)	Dip Angle (°)	Field Strength (nT)
	IGRF202013	7/26/2022	7.59	66.40	51,701.48866668

Design	Design #2				
Audit Notes:					
Version:		Phase:	PLAN	Tie On Depth:	0.00
Vertical Section:	Depth From (TVD) (usft)	+N/-S (usft)	+E/-W (usft)	Direction (°)	
	0.00	0.00	0.00	270.88	

Plan Survey Tool Program		Date	8/9/2022		
Depth From (usft)	Depth To (usft)	Survey (Wellbore)	Tool Name	Remarks	
1	0.00	2,378.00	Design #2 (Plan C)	ISCWSA MWD	
				Fixed:v2:standard declination	
2	2,378.00	12,276.71	Design #2 (Plan C)	ISCWSA MWD	
				Fixed:v2:standard declination	

Planning Report

Database:	EDM 5000.16 Single User Db	Local Co-ordinate Reference:	Well GEORGENE 2833-07H
Company:	VERDAD RESOURCES	TVD Reference:	RKB = 24' @ 5042.00usft (RIG)
Project:	WATTENBERG FIELD	MD Reference:	RKB = 24' @ 5042.00usft (RIG)
Site:	2N-64W-28 GEORGENE PAD	North Reference:	True
Well:	GEORGENE 2833-07H	Survey Calculation Method:	Minimum Curvature
Wellbore:	Plan C		
Design:	Design #2		

Plan Sections										
Measured Depth (usft)	Inclination (°)	Azimuth (°)	Vertical Depth (usft)	+N/-S (usft)	+E/-W (usft)	Dogleg Rate (°/100usft)	Build Rate (°/100usft)	Turn Rate (°/100usft)	TFO (°)	Target
0.00	0.00	0.00	0.00	0.00	0.00	0.00	0.00	0.00	0.00	
297.70	0.00	0.00	297.70	0.00	0.00	0.00	0.00	0.00	0.00	
1,016.20	14.37	32.14	1,008.69	75.89	47.68	2.00	2.00	0.00	32.14	
6,424.74	14.37	32.14	6,248.02	1,212.49	761.78	0.00	0.00	0.00	0.00	
7,506.96	90.00	270.88	6,950.00	1,375.86	132.88	9.00	6.99	-11.21	-120.46	
12,276.71	90.00	270.88	6,950.00	1,448.84	-4,636.31	0.00	0.00	0.00	0.00	GEORGENE 2833-07

Planning Report

Database:	EDM 5000.16 Single User Db	Local Co-ordinate Reference:	Well GEORGENE 2833-07H
Company:	VERDAD RESOURCES	TVD Reference:	RKB = 24' @ 5042.00usft (RIG)
Project:	WATTENBERG FIELD	MD Reference:	RKB = 24' @ 5042.00usft (RIG)
Site:	2N-64W-28 GEORGENE PAD	North Reference:	True
Well:	GEORGENE 2833-07H	Survey Calculation Method:	Minimum Curvature
Wellbore:	Plan C		
Design:	Design #2		

Planned Survey									
Measured Depth (usft)	Inclination (°)	Azimuth (°)	Vertical Depth (usft)	+N/-S (usft)	+E/-W (usft)	Vertical Section (usft)	Dogleg Rate (°/100usft)	Build Rate (°/100usft)	Turn Rate (°/100usft)
0.00	0.00	0.00	0.00	0.00	0.00	0.00	0.00	0.00	0.00
100.00	0.00	0.00	100.00	0.00	0.00	0.00	0.00	0.00	0.00
200.00	0.00	0.00	200.00	0.00	0.00	0.00	0.00	0.00	0.00
297.70	0.00	0.00	297.70	0.00	0.00	0.00	0.00	0.00	0.00
Begin Nudge @ 297.70ft									
300.00	0.05	32.14	300.00	0.00	0.00	0.00	2.00	2.00	0.00
400.00	2.05	32.14	399.98	1.55	0.97	-0.95	2.00	2.00	0.00
500.00	4.05	32.14	499.83	6.05	3.80	-3.71	2.00	2.00	0.00
600.00	6.05	32.14	599.44	13.49	8.48	-8.27	2.00	2.00	0.00
700.00	8.05	32.14	698.68	23.88	15.00	-14.63	2.00	2.00	0.00
800.00	10.05	32.14	797.43	37.19	23.37	-22.79	2.00	2.00	0.00
900.00	12.05	32.14	895.57	53.41	33.56	-32.73	2.00	2.00	0.00
1,000.00	14.05	32.14	992.99	72.53	45.57	-44.45	2.00	2.00	0.00
1,016.20	14.37	32.14	1,008.69	75.89	47.68	-46.51	2.00	2.00	0.00
Hold Tangent @ 1016.20ft									
1,100.00	14.37	32.14	1,089.87	93.50	58.75	-57.30	0.00	0.00	0.00
1,200.00	14.37	32.14	1,186.74	114.52	71.95	-70.18	0.00	0.00	0.00
1,300.00	14.37	32.14	1,283.61	135.53	85.15	-83.06	0.00	0.00	0.00
1,400.00	14.37	32.14	1,380.48	156.55	98.36	-95.94	0.00	0.00	0.00
1,500.00	14.37	32.14	1,477.35	177.56	111.56	-108.82	0.00	0.00	0.00
1,600.00	14.37	32.14	1,574.23	198.58	124.76	-121.70	0.00	0.00	0.00
1,700.00	14.37	32.14	1,671.10	219.59	137.96	-134.58	0.00	0.00	0.00
1,800.00	14.37	32.14	1,767.97	240.61	151.17	-147.45	0.00	0.00	0.00
1,900.00	14.37	32.14	1,864.84	261.62	164.37	-160.33	0.00	0.00	0.00
2,000.00	14.37	32.14	1,961.71	282.64	177.57	-173.21	0.00	0.00	0.00
2,100.00	14.37	32.14	2,058.58	303.65	190.78	-186.09	0.00	0.00	0.00
2,200.00	14.37	32.14	2,155.45	324.67	203.98	-198.97	0.00	0.00	0.00
2,300.00	14.37	32.14	2,252.33	345.68	217.18	-211.85	0.00	0.00	0.00
2,400.00	14.37	32.14	2,349.20	366.70	230.39	-224.73	0.00	0.00	0.00
2,429.73	14.37	32.14	2,378.00	372.95	234.31	-228.56	0.00	0.00	0.00
9 5/8"									
2,500.00	14.37	32.14	2,446.07	387.71	243.59	-237.61	0.00	0.00	0.00
2,600.00	14.37	32.14	2,542.94	408.73	256.79	-250.48	0.00	0.00	0.00
2,700.00	14.37	32.14	2,639.81	429.74	270.00	-263.36	0.00	0.00	0.00
2,800.00	14.37	32.14	2,736.68	450.76	283.20	-276.24	0.00	0.00	0.00
2,900.00	14.37	32.14	2,833.55	471.77	296.40	-289.12	0.00	0.00	0.00
3,000.00	14.37	32.14	2,930.42	492.79	309.60	-302.00	0.00	0.00	0.00
3,100.00	14.37	32.14	3,027.30	513.80	322.81	-314.88	0.00	0.00	0.00
3,200.00	14.37	32.14	3,124.17	534.82	336.01	-327.76	0.00	0.00	0.00
3,300.00	14.37	32.14	3,221.04	555.83	349.21	-340.64	0.00	0.00	0.00
3,400.00	14.37	32.14	3,317.91	576.85	362.42	-353.51	0.00	0.00	0.00
3,500.00	14.37	32.14	3,414.78	597.86	375.62	-366.39	0.00	0.00	0.00
3,600.00	14.37	32.14	3,511.65	618.88	388.82	-379.27	0.00	0.00	0.00
3,700.00	14.37	32.14	3,608.52	639.89	402.03	-392.15	0.00	0.00	0.00
3,800.00	14.37	32.14	3,705.40	660.91	415.23	-405.03	0.00	0.00	0.00
3,900.00	14.37	32.14	3,802.27	681.92	428.43	-417.91	0.00	0.00	0.00
4,000.00	14.37	32.14	3,899.14	702.94	441.64	-430.79	0.00	0.00	0.00
4,100.00	14.37	32.14	3,996.01	723.95	454.84	-443.67	0.00	0.00	0.00
4,200.00	14.37	32.14	4,092.88	744.97	468.04	-456.54	0.00	0.00	0.00
4,300.00	14.37	32.14	4,189.75	765.98	481.24	-469.42	0.00	0.00	0.00
4,400.00	14.37	32.14	4,286.62	787.00	494.45	-482.30	0.00	0.00	0.00
4,500.00	14.37	32.14	4,383.49	808.01	507.65	-495.18	0.00	0.00	0.00
4,600.00	14.37	32.14	4,480.37	829.03	520.85	-508.06	0.00	0.00	0.00

Planning Report

Database:	EDM 5000.16 Single User Db	Local Co-ordinate Reference:	Well GEORGENE 2833-07H
Company:	VERDAD RESOURCES	TVD Reference:	RKB = 24' @ 5042.00usft (RIG)
Project:	WATTENBERG FIELD	MD Reference:	RKB = 24' @ 5042.00usft (RIG)
Site:	2N-64W-28 GEORGENE PAD	North Reference:	True
Well:	GEORGENE 2833-07H	Survey Calculation Method:	Minimum Curvature
Wellbore:	Plan C		
Design:	Design #2		

Planned Survey									
Measured Depth (usft)	Inclination (°)	Azimuth (°)	Vertical Depth (usft)	+N/-S (usft)	+E/-W (usft)	Vertical Section (usft)	Dogleg Rate (°/100usft)	Build Rate (°/100usft)	Turn Rate (°/100usft)
4,700.00	14.37	32.14	4,577.24	850.04	534.06	-520.94	0.00	0.00	0.00
4,800.00	14.37	32.14	4,674.11	871.06	547.26	-533.82	0.00	0.00	0.00
4,900.00	14.37	32.14	4,770.98	892.07	560.46	-546.70	0.00	0.00	0.00
5,000.00	14.37	32.14	4,867.85	913.09	573.67	-559.57	0.00	0.00	0.00
5,100.00	14.37	32.14	4,964.72	934.10	586.87	-572.45	0.00	0.00	0.00
5,200.00	14.37	32.14	5,061.59	955.12	600.07	-585.33	0.00	0.00	0.00
5,300.00	14.37	32.14	5,158.46	976.13	613.28	-598.21	0.00	0.00	0.00
5,400.00	14.37	32.14	5,255.34	997.14	626.48	-611.09	0.00	0.00	0.00
5,500.00	14.37	32.14	5,352.21	1,018.16	639.68	-623.97	0.00	0.00	0.00
5,600.00	14.37	32.14	5,449.08	1,039.17	652.88	-636.85	0.00	0.00	0.00
5,700.00	14.37	32.14	5,545.95	1,060.19	666.09	-649.73	0.00	0.00	0.00
5,800.00	14.37	32.14	5,642.82	1,081.20	679.29	-662.61	0.00	0.00	0.00
5,900.00	14.37	32.14	5,739.69	1,102.22	692.49	-675.48	0.00	0.00	0.00
6,000.00	14.37	32.14	5,836.56	1,123.23	705.70	-688.36	0.00	0.00	0.00
6,100.00	14.37	32.14	5,933.44	1,144.25	718.90	-701.24	0.00	0.00	0.00
6,200.00	14.37	32.14	6,030.31	1,165.26	732.10	-714.12	0.00	0.00	0.00
6,300.00	14.37	32.14	6,127.18	1,186.28	745.31	-727.00	0.00	0.00	0.00
6,400.00	14.37	32.14	6,224.05	1,207.29	758.51	-739.88	0.00	0.00	0.00
6,424.74	14.37	32.14	6,248.02	1,212.49	761.78	-743.06	0.00	0.00	0.00
KOP @ 6424.74ft :: DLS = 9°/100'									
6,450.00	13.36	23.63	6,272.54	1,217.82	764.61	-745.82	9.00	-4.00	-33.69
6,500.00	12.37	3.80	6,321.31	1,228.46	767.28	-748.33	9.00	-1.98	-39.65
6,550.00	12.94	343.32	6,370.12	1,239.17	766.03	-746.91	9.00	1.14	-40.98
6,600.00	14.89	326.35	6,418.67	1,249.88	760.86	-741.58	9.00	3.90	-33.94
6,650.00	17.77	313.99	6,466.67	1,260.53	751.81	-732.36	9.00	5.76	-24.72
6,700.00	21.21	305.24	6,513.80	1,271.06	738.93	-719.32	9.00	6.87	-17.49
6,750.00	24.97	298.93	6,559.80	1,281.38	722.30	-702.53	9.00	7.53	-12.62
6,800.00	28.93	294.21	6,604.36	1,291.46	702.02	-682.10	9.00	7.93	-9.43
6,850.00	33.02	290.57	6,647.23	1,301.21	678.22	-658.16	9.00	8.18	-7.30
6,900.00	37.20	287.65	6,688.12	1,310.58	651.05	-630.84	9.00	8.35	-5.84
6,950.00	41.44	285.24	6,726.80	1,319.52	620.66	-600.32	9.00	8.47	-4.81
7,000.00	45.71	283.21	6,763.01	1,327.96	587.26	-566.80	9.00	8.55	-4.06
7,050.00	50.02	281.46	6,796.55	1,335.86	551.04	-530.46	9.00	8.62	-3.51
7,100.00	54.35	279.91	6,827.20	1,343.16	512.24	-491.55	9.00	8.66	-3.09
7,150.00	58.70	278.53	6,854.77	1,349.83	471.08	-450.29	9.00	8.70	-2.77
7,200.00	63.07	277.27	6,879.09	1,355.82	427.82	-406.95	9.00	8.73	-2.52
7,250.00	67.44	276.10	6,900.02	1,361.10	382.73	-361.78	9.00	8.75	-2.34
7,300.00	71.82	275.00	6,917.42	1,365.62	336.09	-315.08	9.00	8.76	-2.19
7,350.00	76.21	273.96	6,931.19	1,369.37	288.18	-267.12	9.00	8.77	-2.08
7,400.00	80.60	272.95	6,941.24	1,372.32	239.30	-218.20	9.00	8.78	-2.01
7,450.00	84.99	271.98	6,947.51	1,374.45	189.76	-168.63	9.00	8.79	-1.96
7,500.00	89.39	271.01	6,949.96	1,375.75	139.85	-118.70	9.00	8.79	-1.93
7,506.96	90.00	270.88	6,950.00	1,375.86	132.88	-111.74	9.00	8.79	-1.93
End Build @ 7506.96ft									
7,600.00	90.00	270.88	6,950.00	1,377.29	39.86	-18.70	0.00	0.00	0.00
7,700.00	90.00	270.88	6,950.00	1,378.82	-60.13	81.30	0.00	0.00	0.00
7,800.00	90.00	270.88	6,950.00	1,380.35	-160.12	181.30	0.00	0.00	0.00
7,900.00	90.00	270.88	6,950.00	1,381.88	-260.10	281.30	0.00	0.00	0.00
8,000.00	90.00	270.88	6,950.00	1,383.41	-360.09	381.30	0.00	0.00	0.00
8,100.00	90.00	270.88	6,950.00	1,384.94	-460.08	481.30	0.00	0.00	0.00
8,200.00	90.00	270.88	6,950.00	1,386.47	-560.07	581.30	0.00	0.00	0.00
8,300.00	90.00	270.88	6,950.00	1,388.00	-660.06	681.30	0.00	0.00	0.00
8,400.00	90.00	270.88	6,950.00	1,389.53	-760.05	781.30	0.00	0.00	0.00
8,500.00	90.00	270.88	6,950.00	1,391.06	-860.03	881.30	0.00	0.00	0.00

Planning Report

Database:	EDM 5000.16 Single User Db	Local Co-ordinate Reference:	Well GEORGENE 2833-07H
Company:	VERDAD RESOURCES	TVD Reference:	RKB = 24' @ 5042.00usft (RIG)
Project:	WATTENBERG FIELD	MD Reference:	RKB = 24' @ 5042.00usft (RIG)
Site:	2N-64W-28 GEORGENE PAD	North Reference:	True
Well:	GEORGENE 2833-07H	Survey Calculation Method:	Minimum Curvature
Wellbore:	Plan C		
Design:	Design #2		

Planned Survey										
Measured Depth (usft)	Inclination (°)	Azimuth (°)	Vertical Depth (usft)	+N/-S (usft)	+E/-W (usft)	Vertical Section (usft)	Dogleg Rate (°/100usft)	Build Rate (°/100usft)	Turn Rate (°/100usft)	
8,600.00	90.00	270.88	6,950.00	1,392.59	-960.02	981.30	0.00	0.00	0.00	
8,700.00	90.00	270.88	6,950.00	1,394.12	-1,060.01	1,081.30	0.00	0.00	0.00	
8,800.00	90.00	270.88	6,950.00	1,395.65	-1,160.00	1,181.30	0.00	0.00	0.00	
8,900.00	90.00	270.88	6,950.00	1,397.18	-1,259.99	1,281.30	0.00	0.00	0.00	
9,000.00	90.00	270.88	6,950.00	1,398.71	-1,359.98	1,381.30	0.00	0.00	0.00	
9,100.00	90.00	270.88	6,950.00	1,400.24	-1,459.96	1,481.30	0.00	0.00	0.00	
9,200.00	90.00	270.88	6,950.00	1,401.77	-1,559.95	1,581.30	0.00	0.00	0.00	
9,300.00	90.00	270.88	6,950.00	1,403.30	-1,659.94	1,681.30	0.00	0.00	0.00	
9,400.00	90.00	270.88	6,950.00	1,404.83	-1,759.93	1,781.30	0.00	0.00	0.00	
9,500.00	90.00	270.88	6,950.00	1,406.36	-1,859.92	1,881.30	0.00	0.00	0.00	
9,600.00	90.00	270.88	6,950.00	1,407.89	-1,959.91	1,981.30	0.00	0.00	0.00	
9,700.00	90.00	270.88	6,950.00	1,409.42	-2,059.89	2,081.30	0.00	0.00	0.00	
9,800.00	90.00	270.88	6,950.00	1,410.95	-2,159.88	2,181.30	0.00	0.00	0.00	
9,900.00	90.00	270.88	6,950.00	1,412.48	-2,259.87	2,281.30	0.00	0.00	0.00	
10,000.00	90.00	270.88	6,950.00	1,414.01	-2,359.86	2,381.30	0.00	0.00	0.00	
10,100.00	90.00	270.88	6,950.00	1,415.54	-2,459.85	2,481.30	0.00	0.00	0.00	
10,200.00	90.00	270.88	6,950.00	1,417.07	-2,559.84	2,581.30	0.00	0.00	0.00	
10,300.00	90.00	270.88	6,950.00	1,418.60	-2,659.82	2,681.30	0.00	0.00	0.00	
10,400.00	90.00	270.88	6,950.00	1,420.13	-2,759.81	2,781.30	0.00	0.00	0.00	
10,500.00	90.00	270.88	6,950.00	1,421.66	-2,859.80	2,881.30	0.00	0.00	0.00	
10,600.00	90.00	270.88	6,950.00	1,423.19	-2,959.79	2,981.30	0.00	0.00	0.00	
10,700.00	90.00	270.88	6,950.00	1,424.72	-3,059.78	3,081.30	0.00	0.00	0.00	
10,800.00	90.00	270.88	6,950.00	1,426.25	-3,159.77	3,181.30	0.00	0.00	0.00	
10,900.00	90.00	270.88	6,950.00	1,427.78	-3,259.75	3,281.30	0.00	0.00	0.00	
11,000.00	90.00	270.88	6,950.00	1,429.31	-3,359.74	3,381.30	0.00	0.00	0.00	
11,100.00	90.00	270.88	6,950.00	1,430.84	-3,459.73	3,481.30	0.00	0.00	0.00	
11,200.00	90.00	270.88	6,950.00	1,432.37	-3,559.72	3,581.30	0.00	0.00	0.00	
11,300.00	90.00	270.88	6,950.00	1,433.90	-3,659.71	3,681.30	0.00	0.00	0.00	
11,400.00	90.00	270.88	6,950.00	1,435.43	-3,759.70	3,781.30	0.00	0.00	0.00	
11,500.00	90.00	270.88	6,950.00	1,436.96	-3,859.68	3,881.30	0.00	0.00	0.00	
11,600.00	90.00	270.88	6,950.00	1,438.49	-3,959.67	3,981.30	0.00	0.00	0.00	
11,700.00	90.00	270.88	6,950.00	1,440.02	-4,059.66	4,081.30	0.00	0.00	0.00	
11,800.00	90.00	270.88	6,950.00	1,441.55	-4,159.65	4,181.30	0.00	0.00	0.00	
11,900.00	90.00	270.88	6,950.00	1,443.08	-4,259.64	4,281.30	0.00	0.00	0.00	
12,000.00	90.00	270.88	6,950.00	1,444.61	-4,359.62	4,381.30	0.00	0.00	0.00	
12,100.00	90.00	270.88	6,950.00	1,446.14	-4,459.61	4,481.30	0.00	0.00	0.00	
12,200.00	90.00	270.88	6,950.00	1,447.67	-4,559.60	4,581.30	0.00	0.00	0.00	
12,276.71	90.00	270.88	6,950.00	1,448.84	-4,636.31	4,658.01	0.00	0.00	0.00	
TD Well @ 12276.71ft										

Casing Points					
Measured Depth (usft)	Vertical Depth (usft)	Name		Casing Diameter (")	Hole Diameter (")
2,429.73	2,378.00	9 5/8"		9-5/8	13-1/2

Planning Report

Database:	EDM 5000.16 Single User Db	Local Co-ordinate Reference:	Well GEORGENE 2833-07H
Company:	VERDAD RESOURCES	TVD Reference:	RKB = 24' @ 5042.00usft (RIG)
Project:	WATTENBERG FIELD	MD Reference:	RKB = 24' @ 5042.00usft (RIG)
Site:	2N-64W-28 GEORGENE PAD	North Reference:	True
Well:	GEORGENE 2833-07H	Survey Calculation Method:	Minimum Curvature
Wellbore:	Plan C		
Design:	Design #2		

Plan Annotations				
Measured Depth (usft)	Vertical Depth (usft)	Local Coordinates		Comment
		+N/-S (usft)	+E/-W (usft)	
297.70	297.70	0.00	0.00	Begin Nudge @ 297.70ft
1,016.20	1,008.69	75.89	47.68	Hold Tangent @ 1016.20ft
6,424.74	6,248.02	1,212.49	761.78	KOP @ 6424.74ft :: DLS = 9°/100'
7,506.96	6,950.00	1,375.86	132.88	End Build @ 7506.96ft
12,276.71	6,950.00	1,448.84	-4,636.31	TD Well @ 12276.71ft