



Harambe 2920

304.c. (8): Emergency Response Plan

- This plan is being submitted as a substantially equivalent document
- This plan is part of the 1041 WOGLA application
- This plan conforms to 304.c.(8) and 602.j. in that it provides for the effective management of situations that may arise on a location and it coordinated with and approved through emergency response agencies
- This is the plan submitted to Weld County who assigns the location an address and coordinates with the emergency response agencies. The plan contains a tactical response plan, spill management and emergency response. Hudson Fire Protection District is the local fire district.

WOGLA Emergency Plan Checklist

Per Weld County Code Sec. 21-5-3320 of the 1041 Weld Mineral Resource Oil and Gas Area (WOGLA) permitting process, both an Emergency Action Plan (EAP) and Tactical Response Plan (TRP) are required for a 1041 WOGLA Permit. The EAP template and the supporting Tactical Response Plan (TRP) also are designed to comply with the Colorado Oil and Gas Conservation Commission (COGCC) FORM 2 A and Rule 602. J Emergency Response Plan, Guidance Plan Elements.

The WOGLA Emergency Response Plan Checklist is for Oil and Gas Operators who use their own document formatting as long as the table of contents and information requested in the EAP template are utilized in the order provided. In addition, an Operator may submit their company Emergency Response Plan with the WOGLA Emergency Action Plan Checklist completed, however, site specific information will still need to be submitted with a TRP.

- Note: Submitting an area-wide ERP will also require site-specific information typically not covered in a company ERP, which focuses on a company's ER management system. Operators will still need to submit site-specific information and a TRP.

WOGLA Emergency Plan Checklist

		Yes	No	Pg. #	TRP	COGCC Element	
1.							
	a. Approval Signatures					Element 2	
2.	THE PLAN IDENTIFIES THE FACILITY(S)						
	a. The plan includes the Facility Name*					602.j.a. (2)	
	b. The plan includes ingress and egress information					Element 4	
	c. The plan includes the Facility Street Address/Physical Address and GPS Coordinates					Element 3	
	d. The plan includes the Latitude/Longitude for the facility(s)*					Element 5	
	e. The plan lists Emergency Muster/Assembly point(s)					Element 4	
	f. Location of personal/visitor log sign-in sheets, JSA, safety forms					N/A	
3.	THE PLAN IDENTIFIES THE LIST OF COMPANY AND CONTRACTOR EMERGENCY CONTACTS						
	a. Company Contact Information i.) Corporate Contact and Address (<i>may be in-or-out of state</i>) ii.) Field Office and Address iii.) On-Call 24/7 Company Emergency Number iv.) EHS Supervisor/Manager v.) EHS Safety Representative/Advisor vi.) EHS Environmental Representative/Advisor					Element 6	
	b. Company Community/Media Relations Contact Information					N/A	
	c. First Responder Contact Information i.) Fire Department serving this jurisdiction (<i>may require 1-2 Fire Station contacts</i>) ii.) County Sheriff iii.) Colorado Highway State Patrol (<i>responsible for Spill/Hazmat</i>) iv.) Local Police Department					Element 1	
	d. Local, State, and Federal Contacts i.) Weld County O&G Energy Department ii.) Weld County Office of Emergency Management (OEM) iii.) Colorado Oil and Gas Commission (COGCC) iv.) Colorado Department of Public Health & Environment (CDPHE) v.) Colorado Parks and Wildlife (CPW) vi.) National Response Center (NRC)					N/A	
	e. Nearest Medical Facilities/Hospital					N/A	
	f. Spill Response Organization Contact Information i. Contracted Spill Response Company(s) (<i>HAZMAT Oil Spill Response</i>)					N/A	
	g. Loss of Well Control ii. Contracted Well Control, e.g., <i>Wild Well Control or Boots & Coots</i>					N/A	

WOGLA Emergency Plan Checklist

			Yes	No	Pg. #	TRP	COGCC Element
	h.	Railroad Emergency Response (If applicable) i.) Union Pacific ii.) BNSF iii.) Great Western Railway/Omni Trax					N/A
	i.	Mutual Aid					Element 7 & 8
4.	THE PLAN IDENTIFIES SITE SPECIFIC INFORMATION						
	a.	Site Description i. Number of oil and gas wells, storage tanks, and produced water tanks					Element 9, 10, 11
	b.	The plan identifies nearby Schools and other High-Occupancy Buildings/Dwellings					Element 9, 10, 11
	c.	The plan lists Site Safety Requirements; i.) Minimum PPE to enter facility ii.) EHS Statement for contract personnel; understand and abide by Company EHS policies and procedures iii.) Primary Hazards of the Facility location					Element 9, 10, 11
	d.	Location of SDS Sheets					N/A
5.	THE PLAN IDENTIFIES MAPS AND DRAWINGS						
	a.	Site Map i.) Project Area Maps ii.) Project Access Map and Muster Point(s) iii.) Truck Haul Route Map iv.) 2500' (800 meter) Buffer Zone (ERG Evacuation Radius)					Element 9, 10, 11
6.	THE PLAN LISTS SPILL RESPONSE CLEAN UP AND REPORTING CRITERIA						
	a.	Spill Response process statement for how the company manages a release/spill during oil and gas production and exploration.					Element 14 & 15
	b.	Spill Reporting process for notifying COGCC, CDPHE, and local authorities (<i>if applicable</i>) i.) Include reporting thresholds (e.g., <i>inside and outside secondary containment</i>) ii.) Reporting timeframe/deadline for initial notification iii.) Company commitment statement for Spill Reporting					Element 12 & 13
6.	THE PLAN LISTS REPORTABLE STORAGE QUANTITY'S ON SITE						
	a.	Quantity(s) of chemicals stored on site.					Element 11
	b.	Tier II Reporting Requirements; Notes if the facility meets threshold requirements, and date submitted to the State of Colorado each Year (March 1 st)					Element 11
7.	EVACUATION INFORMATION						
	a.	Evacuation plan procedures (public) i.) Process for how emergency evacuation, notifications and coordination with local authorities					N/A

WOGLA Emergency Plan Checklist

			Yes	No	Pg. #	TRP	COGCC Element
8.	EVACUATION INFORMATION						
	a.	Evacuation Plan procedures (public)					N/A
9.	TRAINING AND EXERCISES						
	a.	Statement with commitment the company will schedule training and exercises with County OEM and first responders.					Element 16
10.	COORDINATION WITH FIRST RESPONDER AGENCIES						
	a.	Statement with commitment the company will communicate drill spud, completion operations and Production Turn-In-Line dates to County OEM					Element 1
11.	Plan Review						
	a.	Statement on how the company will coordinate with County OEM and First responders on updating the WOGLA EAP and TRP					602.j.a. (2)
	b.	Operator has coordinated with local Fire Districts on applicable jurisdictional fire codes					N/A

Weld County WOGLA EAP Template

Per Weld County Code Sec. 21-5-3320 of the 1041 Weld Mineral Resource Oil and Gas Area (WOGLA) permitting process, both an Emergency Action Plan (EAP) and Tactical Response Plan (TRP) are required for a 1041 WOGLA Permit. The EAP template and the supporting Tactical Response Plan (TRP) also are designed to comply with the Colorado Oil and Gas Conservation Commission (COGCC) FORM 2 A and Rule 602. J Emergency Response Plan, Guidance Plan Elements.

The EAP is designed to assist local agencies with critical information that may aid first responders and company personnel during an emergency. Local agencies may include but are not limited to, fire department(s), emergency medical service(s) (EMS), law enforcement agencies (LE), and City or County Office of Emergency Management (OEM). State and Federal agencies consisting of COGCC, Colorado Department of Public Health and Environment (CDPHE), and the Environmental Protection Agency (EPA), may also reference the EAP.

The intent of the WOGLA EAP is for emergency planning between Local agencies and Oil and Gas Operators. If applicable, all fire code requirements shall be coordinated with the fire district having jurisdiction. As the final approval signatory, Weld OEM will not delay signing an EAP due to fire code related issues or concerns. Weld County encourages Oil and Gas Operators to work with the local fire districts to ensure they are meeting their adopted fire codes and if applicable, their local jurisdictions permitting requirements.

WOGLA EAP and TRP Instructions

Upon submission of your WOGLA permit, submit the completed following Emergency Planning documents:

- Site-specific Emergency Action Plan (EAP) & site-specific Tactical Response Plan (TRP) for the phases of oil & gas construction and development, up to transitioning to production.
 - Once the facility has transitioned into production, the operator is required to implement and utilize an area-wide company ERP for all-hazards emergencies.
 - In alignment with COGCC guidelines 602ja, (sec. 1-2), facilities which are in production, shall submit an area-wide plan annually if there are changes in contact information or change in response strategy.

WOGLA Emergency Response Plan Checklist; Oil and Gas Operators may use their own formatting as long as the table of contents and information requested in this template are utilized in the order provided. In addition, an Operator may submit their company Emergency Response Plan with the WOGLA Emergency Action Plan Checklist completed, however, site specific information will still need to be submitted with a TRP.

- Note: Submitting an area-wide ERP will also require site-specific information typically not covered in a company ERP, which focuses on a company's ER management system. Operators will still need to submit site-specific information and a TRP.

The WOGLA EAP and TRP permitting requirement also satisfies the Colorado Oil & Gas Conservation Commission (COGCC), *Rule 304.b.(8) Emergency Response Plan, Form 2 A and Rule 602. J Emergency Response Plan Guidance.*

SITE SAFETY AND EMERGENCY ACTION PLAN

Verdad Resources LLC



1125 17th Street, Suite 550

Denver, CO 80202

Harambe 2920

Address: TBD

WELD COUNTY, COLORADO

Proposed Spud Date: 4th Quarter 2023

Table of Contents

SECTION 1 – APPROVAL SIGNATURES	1
SECTION 2 – SITE ADDRESS AND DIRECTIONS	2
a) Directions:.....	2
b) Ingress and egress information:	2
c) Physical Address and GPS coordinates	2
d) Emergency Evacuation/Muster Assembly point(s)	2
SECTION 3 – LIST OF EMERGENCY CONTACTS.....	3
a) Energy Company	3
b) Energy Company Community/Media Relations	3
c) First Responders (Fire, EMS, HazMat)	3
d) Local, State, and Federal Contacts.....	3
e) Medical Facilities (<i>Nearest locations to site</i>)	4
f) Spill Response Organization (<i>Contracted</i>)	4
g) Loss of Well Control.....	4
h) Railroad Emergency Response (<i>if applicable</i>).....	4
i) Mutual-Aid –	4
SECTION – 4 SITE SPECIFIC INFORMATION	5
a) Site Description.....	5
b) Nearby Schools, High Occupancy Buildings, Waterways.....	5
c) Site Safety Requirements and General Safety Information.....	5
d) Safety Data Sheets (SDS)	5
e) Equipment List	6
f) Chemicals stored on-site (BBLs and Gallons).....	6
SECTION 5 – MAPS AND DRAWINGS	7
Project Area Map.....	Error! Bookmark not defined.
Project Location Access Map and Muster Point.....	Error! Bookmark not defined.
Haul Route Map.....	Error! Bookmark not defined.
2500 Foot Buffer Area Map	8
SECTION 6 – SPILL RESPONSE AND CLEAN-UP	10
a) Spill Response	10
b) Spill Reporting.....	10
SECTION 7 – REPORTABLE QUANTITIES.....	12
a) Reportable Quantities	12
b. Reportable Requirements.....	12
SECTION 8 – EVACUATION INFORMATION.....	12
a. Evacuation Plan Procedures (public)	12
SECTION – 9 TRAINING AND EXERCISES	13
SECTION – 10 COORDINATION WITH FIRST RESPONDERS	13
SECTION – 11 Plan Review and Update Procedures.....	13

SECTION 1 – APPROVAL SIGNATURES

Instructions: Company Representative to sign with concurrence review by local Fire District in alignment with COGCC FORM 2 A and Rule 602. J Emergency Response Plan, Guidance Plan Element 2.

Verdad Resources LLC			
Name	Signature	Title	Date
Allison Schieber	<i>Allison Schieber</i>	Sr Regulatory Analyst	05/12/22
Fire District			
Name	Signature	Title	Date
Hudson Fire Protection District			

Weld County Office of Emergency Management

Digitally Signed



SECTION 2 – SITE ADDRESS AND DIRECTIONS

a) Directions:

Beginning at the intersection of WCR 51 and state highway 52. Then north on WCR 51 for 2 miles to the intersection of WCR 51 and WCR 16. Then turn east (right) on WCR 16 for 540 feet to the beginning of the lease road. Follow lease road south to the location.

b) Ingress and egress information:

All traffic into and out of Harambe 2920 will check-in and check-out with security. All ingress and egress routes will be clearly identified and kept clear from parked/staged vehicles at all times.

c) Physical Address and GPS coordinates

- **API#** – Pending COGCC Permit Approval
- **Legal Description** – SWNE Sec 32 T2N R64W 6th PM
- **Address** - * Address Pending (*Weld OEM will provide physical address for 911 dispatching*)
- **Town, CO, Zip** – Weld County, Colorado 80643
- **Lat/Long:** Lat: 40.0969328° Long: -104.5747280°

d) Emergency Evacuation/Muster Assembly point(s)

For incidents where remaining in a particular area could pose a hazard to personnel onsite, such as a fire or hazardous material release, evacuation may be required to ensure the safety of onsite personnel. In the event of an emergency, site personnel will initially be evacuated to pre-designated muster assembly points.

- The Muster assembly points are identified on Project Location Access Map and Muster Point(s) in this plan, and noted on the site-specific TRP.
- The Muster assembly points will be identified during all site safety briefings for visitors, employees, and contract personnel.
- **Sign-In Sheets:** During drilling and completion activities all employees and approved visitors to the **Harambe 2920 and** SWNE Sec 32 T2N R64W 6th PM will be required to enter through a manned security checkpoint. Upon checking in, employees and visitors will be provided a detailed safety briefing of current operations, all safety precautions that must be adhered to, and the site emergency evacuation plan. In addition, all personnel who enter the location must sign-out upon their departure. Security or Supervisory personnel are required to account for all persons entering or leaving during active operations and in the event of an incident.
- Once drilling and completion activities are finalized, the site will transition to its production phase and no unauthorized personnel will be allowed on location without first contacting a company representative.

SECTION 3 – LIST OF EMERGENCY CONTACTS**a) Energy Company**

Name		Office Phone	Emergency/Cell
Verdad Resources 1125 17 TH St., Suite 550 Denver CO 80202		720-845-6907	1-800-980-2927
Field Office and Address		NA	1-800-980-2927
Energy Company EHS on-call Emergency Number		1-800-980-2927	1-800-980-2927
Superintendent, Randy Jakel		720-845-6912	970-381-7155
Director of Operations, Justin Pivik		720-845-6915	303-653-6457
Director of EHS&R, Mike Cugnetti		720-845-6901	303-704-8856

b) Energy Company Community/Media Relations

Name	Office Phone	Cell Phone
Heather Mitchell	720-845-6917	
Allison Schieber	720-845-6909	

c) First Responders (Fire, EMS, HazMat)

Name	Emergency Number	Non-Emergency Number
*All emergency notifications require notification to 911 first		
Hudson Fire Protection District	911	303-536-0161
Weld County Sheriff	911	970-356-4015
Colorado State Highway Patrol	911	970-506-4999
Hudson Police Department	911	303-536-9311

d) Local, State, and Federal Contacts

Name	Emergency Number	Non-Emergency Number
Weld County Oil and Gas Energy Department	none	970-400-3580
Weld County Office of Emergency Management	911	970-304-6540

Weld County WOGLA EAP Template

COGCC	none	303-894-2100
CDPHE	none	877-518-5608
Colorado Parks & Wildlife	none	303-291-7227
National Response Center	800-424-8802	none

e) **Medical Facilities** *(Nearest locations to site)*

Name	Office Phone
Northern Colorado Medical Center	970-352-4121
Medical Center of the Rockies	970-624-2500
Northern Colorado Medical Facility (Burn Unit)	970-810-4121

f) **Spill Response Organization** *(Contracted)*

Name	24/7 Emergency Number	Non-Emergency Number
Custom Environmental Services, Inc. (CES)	1-800-310-7445	303-423.9949

g) **Loss of Well Control**

Name	24/7 Emergency Number	Non-Emergency Number
Wild Well Control, Inc. (Contracted Well Specialist)		281-353-5481

h) **Railroad Emergency Response** *(if applicable)*

Name	24/7 Emergency Number

i) **Mutual-Aid –**

All mutual-aid coordination within Weld County will be in accordance with the current Weld County Fire Chiefs Association Mutual-Aid Agreement. In addition, due to the size of Weld County and the large number of Fire Departments that make up the Weld County Fire Chiefs Association's, Mutual-Aid may be a mixture of full-time, combination, and volunteer FD resources responding to an incident at **Harambe 2920 and SWNE Sec 32 T2N R64W 6th PM.**

SECTION – 4 SITE SPECIFIC INFORMATION

a) Site Description

The **Harambe 2920 at** SWNE Sec 32 T2N R64W 6th PM Pad is an Verdad Resources oil and gas production facility that will have nine (9) horizontal oil and gas wells along with Two (2) 400-barrel crude oil storage tanks and eight (8) 400 barrel produced water tanks located inside a lined secondary containment structure.

As part of the Weld County 1041 WOGLA permit process, the following sections of County Code address site layout, site drawings, and identify any sensitive areas and discuss any mitigation measures needed.

- Sec. 21-5-312 – Comprehensive Development Plans (CDPs)
- Section 21-5-320 – Application requirements for 1041 WOGLA Permit

b) Nearby Schools, High Occupancy Buildings, Waterways

- Schools - None within 2500' of location.
- High Occupancy Buildings - None within 2500' of location.
- Waterways – 121' upgradient of 100 year floodplain

c) Site Safety Requirements and General Safety Information

The minimum personal protective equipment (PPE) to enter any Verdad Resources production location includes hard hat, safety glasses, safety toe boots, fire resistant clothing (FRC), and a 4-gas personal monitor. All contractors and visitors are responsible for providing their employees with the appropriate training on and use of PPE while on Verdad Resources locations. In addition, all contract personnel entering an Verdad Resources location to perform work must understand and abide by Verdad Resources contractor expectations relating to environmental, health, and safety requirements.

The primary hazards that any person must be aware of while on an Verdad Resources production location include, but are not limited to, the potential for release of hydrocarbon gases and/or liquids from production equipment/tanks, heavy truck and equipment traffic, loud noise, high pressures, and the potential for a flash fire. These hazards can vary depending on the work being performed.

d) Safety Data Sheets (SDS)

- **SDS:** Depending on the operations taking place on location, chemicals stored on-site may vary. In accordance with 49 CFR 1910.1200, Safety Data Sheets (SDS) will be made available for site personnel performing work and for first responders in a centralized location onsite.

e) Equipment List

Item Description	Quantity
Horizontal oil and gas wells	9
400-barrel crude oil storage tank	2
400-barrel produced water	8
VRUs	6
Heater Treater	2
LP Test Units	2
HP Bulk Units	2
Surge Vessels	2
LACT Units	3
ECD	1

f) Chemicals stored on-site (BBLs and Gallons)

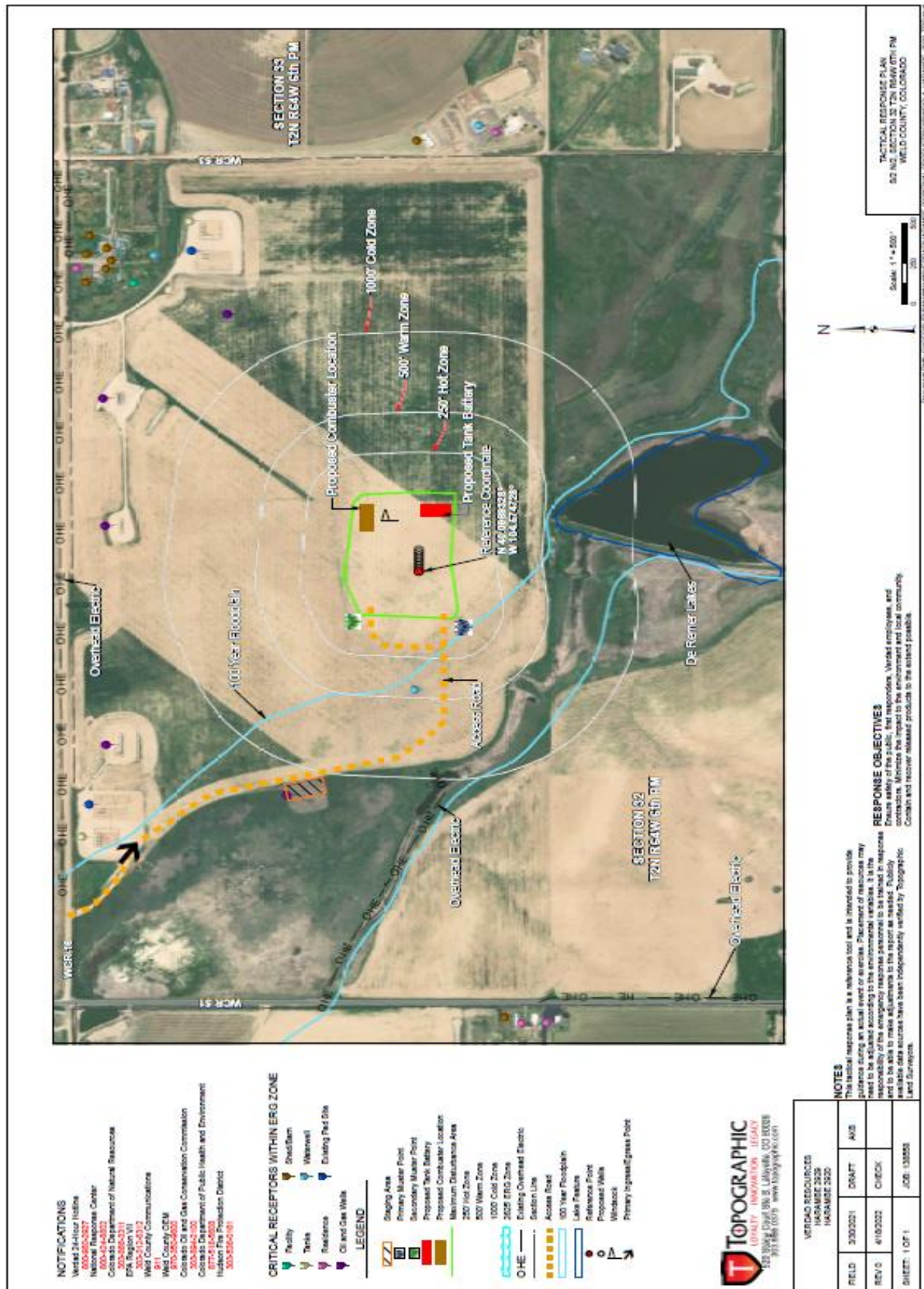
Operations	Chemicals	Volume	Units
Drilling			
	Calcium Chloride Powder		
	Claytone II	50 lbs/each	64
	Dynafiber	25 lbs/bags	45
	GSX-509-08	50 lbs/bags	80
	Ice Melt	50 lbs/bags	30
	Lime (Hydrated)	50 lbs/bags	500
	Newcarb F 325	50 lbs/bags	50
	Newwate	100 lbs/fbg	480
	Oil Dry	25 lbs/bags	40
	Opti Drill	Bbl	1
	Optivert	55 gal/drm	12
	Rigwash	55 gal/drm	1
	Terocoat	55 gal/drm	8
	VP-Plus	275 gal	4
	VP-Wet	55 gal/drm	4

Weld County WOGLA EAP Template

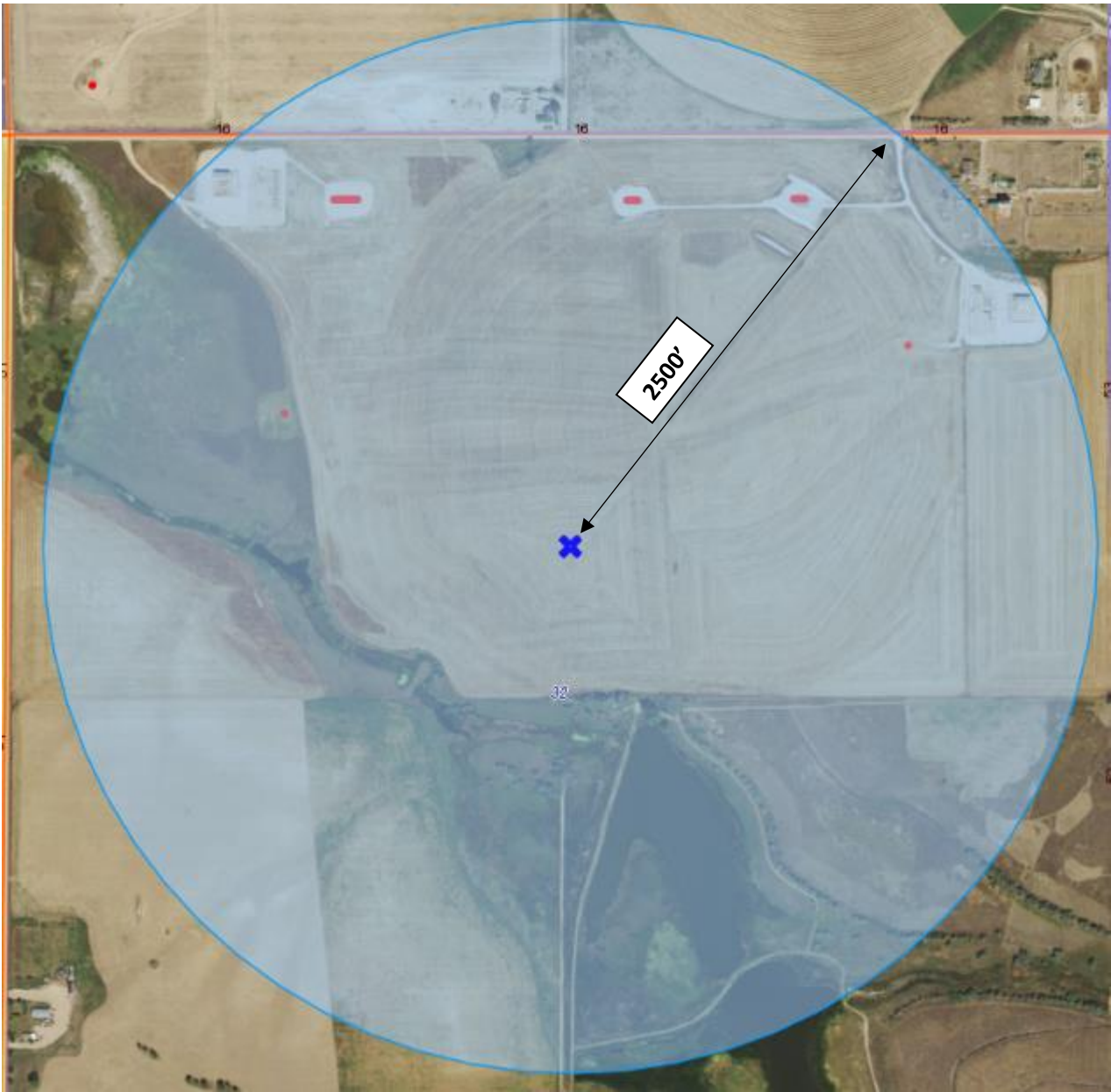
Operations	Chemicals	Volume	Units
Drilling			
	Calcium Chloride Powder		
	Claytone II	50 lbs/each	64
	Dynafiber	25 lbs/bags	45
	GSX-509-08	50 lbs/bags	80
	Ice Melt	50 lbs/bags	30
	Lime (Hydrated)	50 lbs/bags	500
	Newcarb F 325	50 lbs/bags	50
	Newwate	100 lbs/fbg	480
	Oil Dry	25 lbs/bags	40
	Opti Drill	Bbl	1
	Optivert	55 gal/drm	12
	Rigwash	55 gal/drm	1
	Terocoat	55 gal/drm	8
	VP-Plus	275 gal	4
	VP-Wet	55 gal/drm	4

Completions			
	HYDROCHLORIC ACID	8000 Gal	
	FRICTION REDUCER	7000 Gal	
	CLAY STABILIZER	6200 Gal	
	SURFACTANT	6200 Gal	
	SODIUM HYPOCHLORITE	8000 Gal	
	BIOCIDE	6200 Gal	
Coil			
	Diesel Storage Tanks	2700 Gal	Tanks
	Drillout Water (Biocide/PR/lube)	1250 Bbl	
	Pipe on Pipe Lube	990 Gal	3 totes
	Blue Dye	10 Gal	5 buckets
	Gel	10 Gal	5 buckets
	Foamer	10 Gal	5 buckets
	Dry Friction Reducer	2 pallets	70 bags (55#)
	Liquid Friction Reducer	330 Gal	1 tote
	Dry Biocide	105 bags	3 buckets
Flowback			
	None		
Production			
	Oil	400 bbls	2 Tanks
	Water	400 bbls	8 Tanks

SECTION 5 – MAPS AND DRAWINGS



2500 Foot Buffer Area Map



SECTION 6 – SPILL RESPONSE AND CLEAN-UP

a) Spill Response

There are multiple types of hydrocarbons and or chemicals stored onsite which can be released/spilled during oil and gas production and exploration. Most commonly released are unrefined products such as crude oil and produced water. Refined petroleum products such as diesel, gasoline, produced oils, and motor oil spills are less common, but still equally important to mitigate. If a spill is discovered, it will be mitigated in accordance with Colorado Oil and Gas Conservation Commission (COGCC), Colorado Department of Public Health and Environment (CDPHE), and Weld County LEPC requirements.

Once a release has been discovered, it will be immediately stopped and contained if possible and is safe to do so. When containing a spill; a combination of sorbent rolls, pads, mats, socks, or containment boom may be deployed, or earthen berms will be constructed around the release to keep spilled material contained and from spreading. These materials will be provided by Verdad Resources and the contract company and available during all construction phases. During a spill, efforts will be made to minimize contact with live vegetation, nearby drainage, rivers, creeks, or streams. If the release is outside of secondary containment or poses a threat to flow off site, or impact environmentally sensitive areas, the spill response contractor will be notified for cleanup assistance, if needed, and for removal and disposal of spilled materials and contaminated areas.

In the event of a large incident requiring outside assistance/cascading resources, Verdad Resources has contracted with Custom Environmental Services (CES). CES possesses a working knowledge of oil and gas operations, emergency response and the Incident Command System (ICS). Once notified CES personnel can be on location within 2 hours.

b) Spill Reporting

The person reporting a spill may be required to supply the minimum spill assessment information to provide as a complete understanding of the incident as possible to local, state, or federal agencies if applicable. Some initial spill response actions and information that may be reported are presented below:

- A spill/release will be reported to the COGCC if released material is property of Verdad Resources and meets the COGCC reporting thresholds (see below), an example would be crude oil released from a separator or produced water from a water tank.
- A spill/release will be reported to the Weld County LEPC if released material is property of Verdad Resources and meets the COGCC reporting thresholds (see below) Mandated by Section 304 of the Emergency Planning and Community Right-To-Know Act (EPCRA).

A spill/release will be reported to the CDPHE if released material is in the custody of a third party for spills meeting CDPHE reporting thresholds or are of any size that impact or threaten to impact waters of the state, a residence or occupied structure, livestock or public byway. An example would be an oil hauler over filling a truck and spills product onto the ground next to a flowing irrigation ditch.

Spills are reportable to the COGCC and/or to Weld County LEPC in the following circumstances:

- A. the spill or release impacts or threatens to impact any waters of the state, a residence or occupied structure, livestock or a public byway;
- B. a spill or release in which 1 barrel or more is released outside of berms or other secondary containment;
- C. or any spill or release of 5 barrels or more. If the spill impacts or threatens to impact waters of the state (which include surface water, ground water and dry gullies or storm sewers leading to surface water), it must also be reported immediately to CDPHE (25-8-601 CRS). Refined Petroleum releases of 25 gallons or more.

Weld County WOGLA EAP Template

Once a spill is determined reportable, there is a 24-hour deadline to make initial notification to the COGCC/LEPC or CDPHE depending on the product ownership. Spills/releases in the custody of Verdad Resources will be reported by a Company representative. Spills/releases in the custody of a third party will be reported by the responsible company's EHS Department to the appropriate agency and to Verdad Resources.

These regulatory guidelines will be strictly followed by Verdad Resources and any contractors operating under Verdad Resources guidance during all activities at the Harambe 2920.

SECTION 7 – REPORTABLE QUANTITIES

a) Reportable Quantities

Mandated by Section 312 of the Emergency Planning and Community Right-To-Know Act (EPCRA) – also known as SARA Title III – the Tier II form captures information about the types, quantities, and locations of hazardous chemicals at a given facility. The form also lists contact information for the facility's designated emergency point-of-contact.

- Any facility that is required to maintain SDSs under the Occupational Safety and Health Administration (OSHA) 49 CFR 1910.1200 regulations for hazardous chemicals stored or used in the workplace.
- Facilities with chemicals in quantities that equal or exceed the lists of lists thresholds must report.
- Propane, benzene, propane and methane are on the lists of lists and are known to be in crude oil. In addition, diesel is on the lists of lists and may be stored on oil and gas sites during construction and development.

b. Reportable Requirements

If your facility will meet the requirements under 40 CFR Part 370, you must submit your Tier II report to the State of Colorado every year before March 1st.

These regulatory requirements will be strictly followed by Verdad Resources and any contractors operating under Verdad Resources during all activities at the Harambe 2920.

SECTION 8 – EVACUATION INFORMATION

a. Evacuation Plan Procedures (public)

The procedure to be used in alerting the public in the event of an incident which could pose a threat to life or property will be arranged and coordinated with first responders and Weld County Emergency Management.

In the event of an actual emergency, the following steps will be immediately taken:

1. Verdad Resources representative will immediately notify first responders (911), to warn the public of a potential chemical exposure.
2. First responders may conduct door to door evacuation notices in addition to reverse 911 and utilizing the Integrated Public Alert and Warning System (IPAWS).
3. Verdad Resources is responsible for employees and contract personnel, and will monitor essential and non-essential personnel traffic on or near the incident site.
4. General:
 - a. The area included within the radius of exposure is considered to be the zone with the maximum potential hazard, per the Emergency Response Guide (ERG). When it is determined that conditions exist which create an additional area (beyond the initial zone of maximum potential hazard) vulnerable to possible hazard, public areas in the additional hazardous area will be evacuated.
 - b. In the event of an incident, after the public areas have been evacuated and traffic stopped, it is expected that local civil authorities will have arrived and within a few hours will have assumed direction of and control of the public, including all public areas.
 - c. Verdad Resources will cooperate with these authorities to the fullest extent and will exert every effort by careful advice to such authorities to prevent panic or rumors.

Verdad Resources will dispatch appropriate personnel to the incident site as soon as possible. The company's personnel will cooperate with and provide such information to civil authorities as they might require.

SECTION – 9 TRAINING AND EXERCISES

TRAINING: Verdad Resources has annual Emergency Response plan training. Staff are trained on the Incident Command System that meets the demands of small or large emergency situations. It is a key feature of the National Incident Command System. The National Incident Management System (NIMS) guides all levels of government, nongovernmental organizations and the private sector to work together to prevent, protect against, mitigate, respond to and recover from incidents.

NIMS provides stakeholders across the whole community with the shared vocabulary, systems and processes to successfully deliver the capabilities described in the National Preparedness System. NIMS defines operational systems that guide how personnel work together during incidents.

Verdad staff train to achieve an understanding of specific roles and response actions in various emergency response scenarios, use of appropriate communication systems.

EXERCISES: Verdad conducts annual internal emergency response exercises and periodic drills on location with local emergency responders. Exercises are an important component to test an organization's response readiness, training and familiarity with various emergency response scenarios, participation and engagement with local and or state agencies, and to develop lessons learned to improve emergency response capabilities.

SECTION – 10 COORDINATION WITH FIRST RESPONDERS

- a) Verdad Resources will communicate site construction, drill spud, completion operations and Production Turn-In-Line dates to the Weld County Office of Emergency Management for coordination/communication with local first responders. These start dates will be provided a minimum of 7 business days prior to commencement or change in oil and gas development operations.
- b) In the event of an emergency requiring First Responders, Unified Command will be established between the Verdad Resources appointed company man on location and First Responders present. Unified Command post will be established based on conditions present at time of incident.
- c) Verdad Resources representative and first responders identified in this Emergency Action Plan and Tactical Response Plan have reviewed both documents and have discussed coordination efforts in the event of an emergency situation requiring first responder assistance.

SECTION – 11 Plan Review and Update Procedures

- a) Multi-year plan review and update:
This plan will be reviewed and updated annually. Verdad intends to engage with the Colorado Preparedness & Response Network to improve our ERP and this EAP, and coordinate further with local emergency responders.
- b) Post incident plan review and update:
After an incident Verdad will conduct an incident review, identifying root causes, preventative actions and corrective actions. In the event that this review identifies a significant change, this ERP will be updated.