

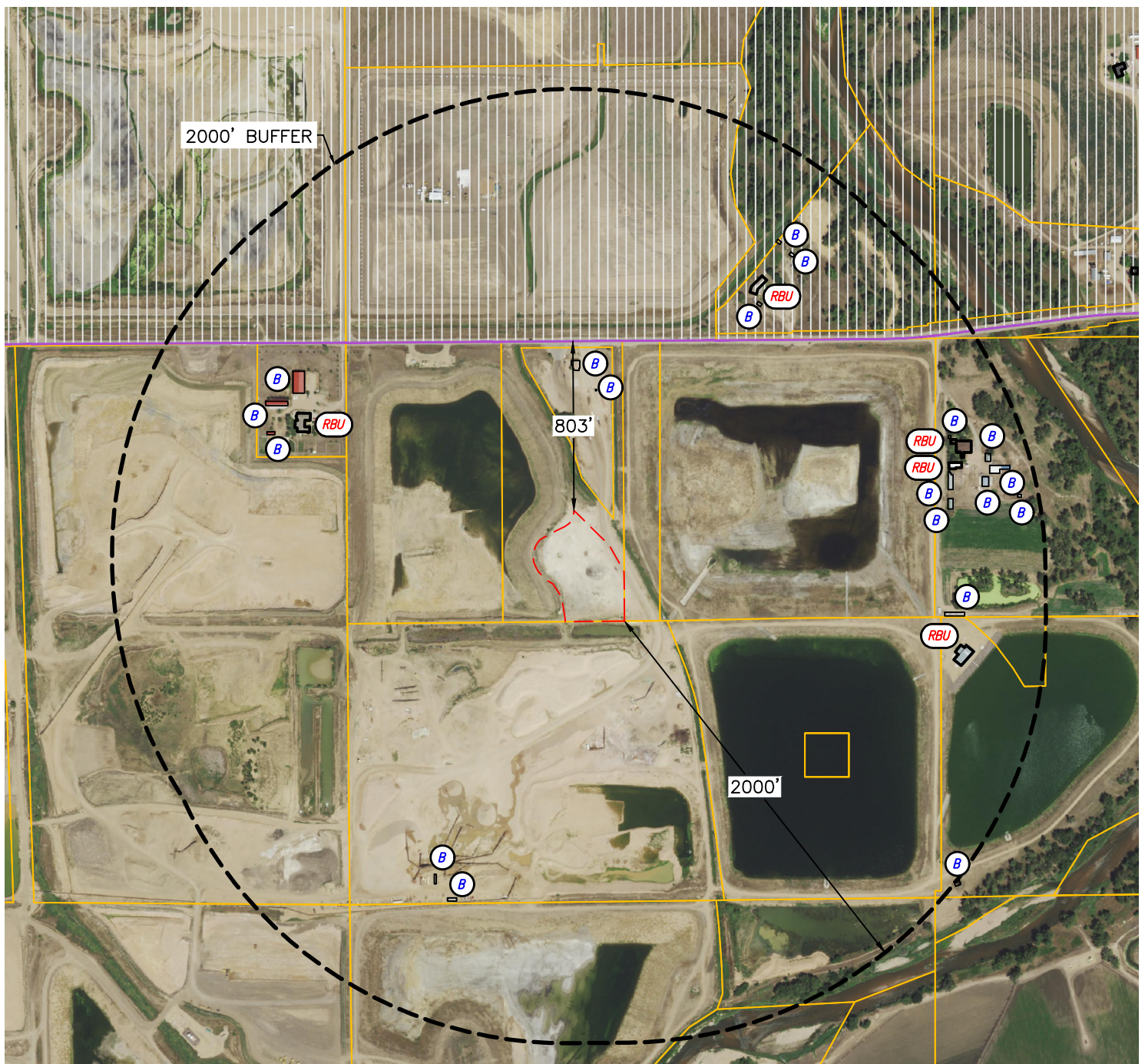


Lat40°, Inc. 6250 W. 10th Street, Unit 2, Greeley, CO 970-515-5294

DISPROPORTIONATELY IMPACTED COMMUNITIES MAP

LG EVERIST 2N66W30
PETRO OPERATING COMPANY, LLC

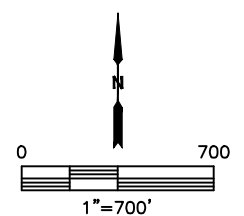
SECTION: 30
TOWNSHIP: 2N
RANGE: 66W
6TH. P.M.
WELD COUNTY, CO



LEGEND

- OIL AND GAS LOCATION
- BUFFER
- DISPROPORTIONATELY IMPACTED COMMUNITY
- BUILDING
- BUILDING UNIT
- RESIDENTIAL BUILDING UNIT

DATA SOURCE: COGCC, ACS



DATE: 6/10/2022
PROJECT#: 2018223