

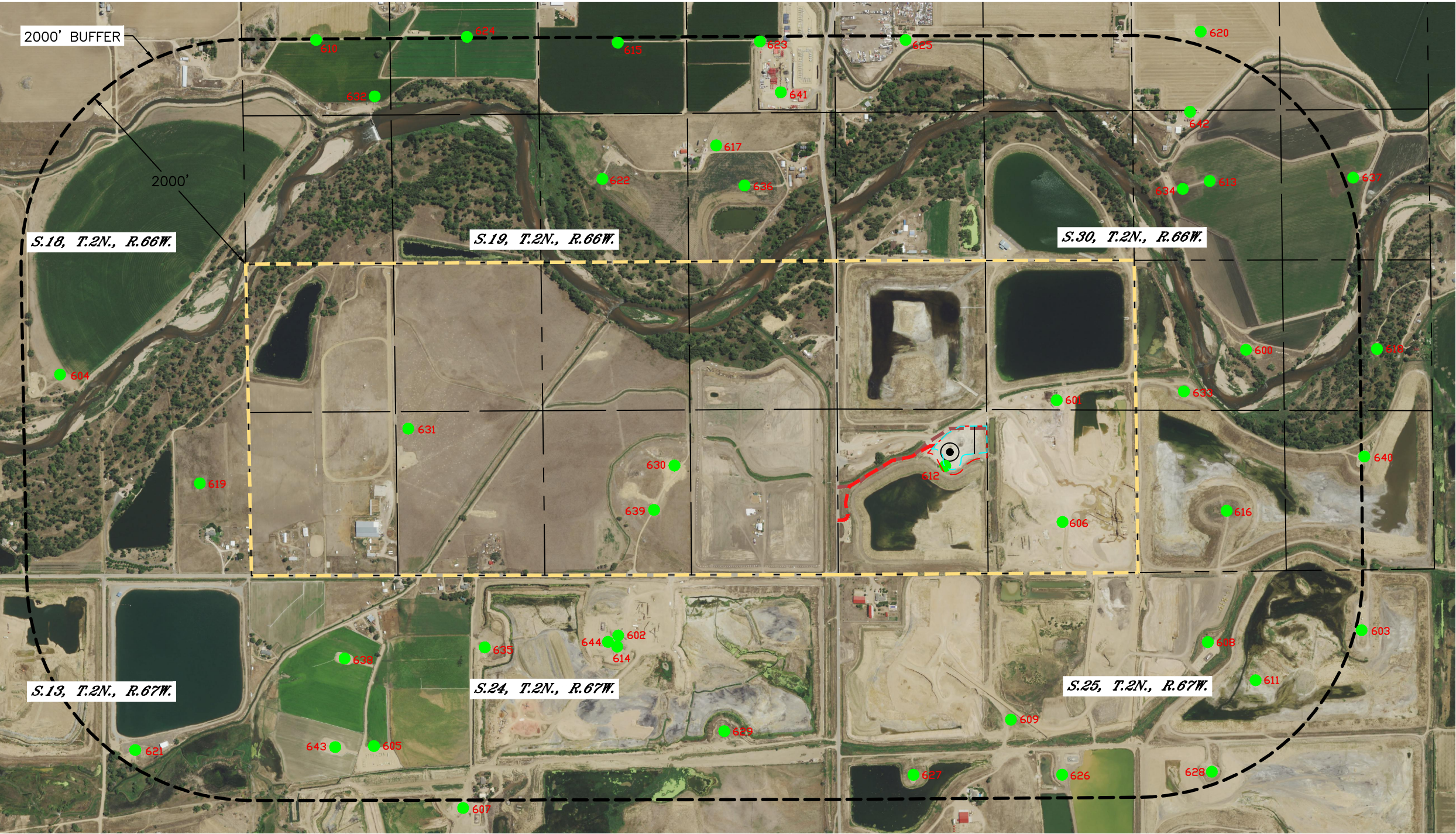


Lat40°, Inc. 6250 W. 10th Street, Unit 2, Greeley, CO 970-515-5294

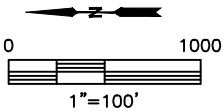
RELATED LOCATION AND FLOWLINE MAP

LG EVERIST 2N66W30  
PETRO OPERATING COMPANY, LLC

SECTION: 30  
TOWNSHIP: 2N  
RANGE: 66W  
6TH. P.M.  
WELD COUNTY, CO



- LEGEND
- LOCATION ACTIVE
  - ⊙ PROPOSED REFERENCE POINT
  - TEMPORARY ACCESS ROAD
  - ACCESS ROAD
  - DSU BOUNDARY
  - PROPOSED FLOWLINE CORRIDOR OIL AND GAS TAKEAWAY
  - 2000' BUFFER
  - PROPOSED PRODUCTION FACILITY
  - WORKING PAD SURFACE
  - OIL AND GAS LOCATION



THIS MAP IS A COMPILATION OF PUBLICLY AVAILABLE DATA. THE ACCURACY AND COMPLETENESS OF SAID DATA HAD NOT BEEN VERIFIED BY LAT40, INC. EXISTING CONDITIONS MAY DIFFER FROM WHAT IS SHOWN.

DATA SOURCE: COGCC

NOTE:  
1. NO OFFSITE FLOWLINE PROPOSED.  
2. THIRD PARTY CUSTODY TRANSFER OCCURS AT LACT FOR OIL.  
3. THIRD PARTY CUSTODY TRANSFER OCCURS AT METER FOR GAS.





Lat40°, Inc. 6250 W. 10th Street, Unit 2, Greeley, CO 970-515-5294

RELATED LOCATION AND FLOWLINE MAP

LG EVERIST 2N66W30  
PETRO OPERATING COMPANY, LLC

SECTION: 30  
TOWNSHIP: 2N  
RANGE: 66W  
6TH. P.M.  
WELD COUNTY, CO

ID	LOCATION ID	LOCATION NAME	OPERATOR
600	305579	EWING-62N66W	CRESTONE PEAK RESOURCES OPERATING LLC
601	311313	DI-TA (JOHN DITIRRO)-62N66W	TOP OPERATING COMPANY
602	311467	NCCI-62N67W	KERR MCGEE OIL & GAS ONSHORE LP
603	311474	CAMPBELL-62N67W	KERR MCGEE OIL & GAS ONSHORE LP
604	318022	CLC GAS UNIT-62N66W	KERR MCGEE OIL & GAS ONSHORE LP
605	318107	GEE TANK BATTERY	KERR MCGEE OIL & GAS ONSHORE LP
606	318141	DITA (J.DITIRRO)-62N66W	TOP OPERATING COMPANY
607	318165	1415 CORP. C UNIT-62N67W	KP KAUFFMAN COMPANY INC
608	318180	R.S. VINCENT UNIT-62N67W	KP KAUFFMAN COMPANY INC
609	318349	1415 CORPORATION D GU-62N67W	KERR MCGEE OIL & GAS ONSHORE LP
610	318472	BANGERT-62N66W	KP KAUFFMAN COMPANY INC
611	318910	HAROLD R MIXON GAS UNIT-62N67W	KERR MCGEE OIL & GAS ONSHORE LP
612	318924	COUNTER-62N66W	TOP OPERATING COMPANY
613	319040	MILLARD-62N66W	KP KAUFFMAN COMPANY INC
614	311296	GLEN HORTON-62N67W	KP KAUFFMAN COMPANY INC
615	311306	NEFF-62N66W	KP KAUFFMAN COMPANY INC
616	311352	HARRY EWING C-62N66W	KP KAUFFMAN COMPANY INC
617	327394	BANGERT-62N66W	CRESTONE PEAK RESOURCES OPERATING LLC
618	328445	SHANNON-62N66W	KP KAUFFMAN COMPANY INC
619	331207	COYLE-62N66W	KERR MCGEE OIL & GAS ONSHORE LP
620	333199	MILLARD-62N66W	CRESTONE PEAK RESOURCES OPERATING LLC
621	336270	WELD COUNTY-62N67W	KERR MCGEE OIL & GAS ONSHORE LP
622	336465	PARKER-62N66W	KP KAUFFMAN COMPANY INC
623	336482	NEFF-62N66W	CRESTONE PEAK RESOURCES OPERATING LLC
624	317922	BANGERT-62N66W	KP KAUFFMAN COMPANY INC
625	317954	COUNTER-62N66W	TOP OPERATING COMPANY
626	318238	1415 CORP. UNIT E-62N67W	KP KAUFFMAN COMPANY INC
627	318399	1415 CORP UNIT F-62N67W	KP KAUFFMAN COMPANY INC
628	318416	R.S. VINCENT UNIT-62N67W	KP KAUFFMAN COMPANY INC
629	318834	WILLIAM E. GEE GAS UNIT-62N67W	KERR MCGEE OIL & GAS ONSHORE LP
630	322560	MURATA-62N66W	CRESTONE PEAK RESOURCES OPERATING LLC
631	322561	MURATA-62N66W	CRESTONE PEAK RESOURCES OPERATING LLC
632	327408	BANGERT-62N66W	CRESTONE PEAK RESOURCES OPERATING LLC
633	328513	EWING-62N66W	KP KAUFFMAN COMPANY INC
634	330955	EWING-62N66W	CRESTONE PEAK RESOURCES OPERATING LLC
635	333014	1415 CORP. UNIT C-62N67W	KP KAUFFMAN COMPANY INC
636	333125	PARKER-62N66W	CRESTONE PEAK RESOURCES OPERATING LLC
637	333131	MILLARD-62N66W	CRESTONE PEAK RESOURCES OPERATING LLC
638	436708	GEE	KERR MCGEE OIL & GAS ONSHORE LP
639	445597	HEIN W19-11, 12 OSA	KERR MCGEE OIL & GAS ONSHORE LP
640	446483	EWING-SHANNON	KP KAUFFMAN COMPANY INC
641	456699	CASTLE PINES	KERR MCGEE OIL & GAS ONSHORE LP
642	476063	Millard	KP KAUFFMAN COMPANY INC
643	436543	GEE	KERR MCGEE OIL & GAS ONSHORE LP
644	446465	HORTON, GLEN	KP KAUFFMAN COMPANY INC

NOTE:  
1. NO OFFSITE FLOWLINE PROPOSED.  
2. THIRD PARTY CUSTODY TRANSFER OCCURS AT LACT FOR OIL.  
3. THIRD PARTY CUSTODY TRANSFER OCCURS AT METER FOR GAS.

THIS MAP IS A COMPILATION OF PUBLICLY AVAILABLE DATA. THE ACCURACY AND COMPLETENESS OF SAID DATA HAD NOT BEEN VERIFIED BY LAT40, INC. EXISTING CONDITIONS MAY DIFFER FROM WHAT IS SHOWN.

DATA SOURCE: COGCC