

Petro Operating Company, LLC
LG Everist Pad
Location # 318924
NWNW Section 30, T1N R66W
Fort Lupton, Colorado

CPW CONSULTATION SUMMARY

Petro Operating Company, LLC (Petro), during the initial review of the location, determined the existing location to be within the polygons of two High Priority Habitats – Mule Deer Migration Corridor and Mule Deer Severe Winter Range.

Petro representatives spoke with CPW on March 16, 2021, regarding the proposed project. During the phone call and subsequent emails that day, CPW determined that due to the already disturbed nature of the existing location within an active sand and gravel mining operation, any potential High Priority Habitat has already been removed and this location is not, in fact, within High Priority Habitat.

Sean Dolfinger

From: Marette - DNR, Brandon <brandon.marette@state.co.us>
Sent: Wednesday, March 17, 2021 10:26 AM
To: Sean Dolfinger
Cc: Chris Mettenbrink - DNR
Subject: Re: CPW FAQ Question Submitted from Website

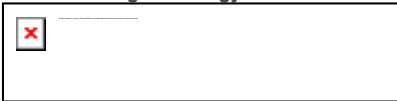
Thanks Sean. I did not turn on those layers.

Even though your proposed location is located within those two HPH mule deer polygons (and initially subject to 1202.d), the habitat has been removed by the existing sand and gravel operation. Therefore, CPW waives any direct or indirect mitigation associated with developing this pad.

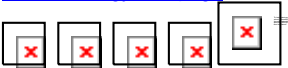
We appreciate you consulting with CPW on this matter, as well as any future matters.

Regards,

Brandon B. Marette, CWB®
Northeast Region Energy Liaison and Land Use Coordinator



Direct [\(303\) 291-7327](tel:3032917327)
[6060 Broadway, Denver, CO 80216](https://www.state.co.us/energy/6060-Broadway-Denver-CO-80216)
brandon.marette@state.co.us
[CPW's Energy Webpage](#)



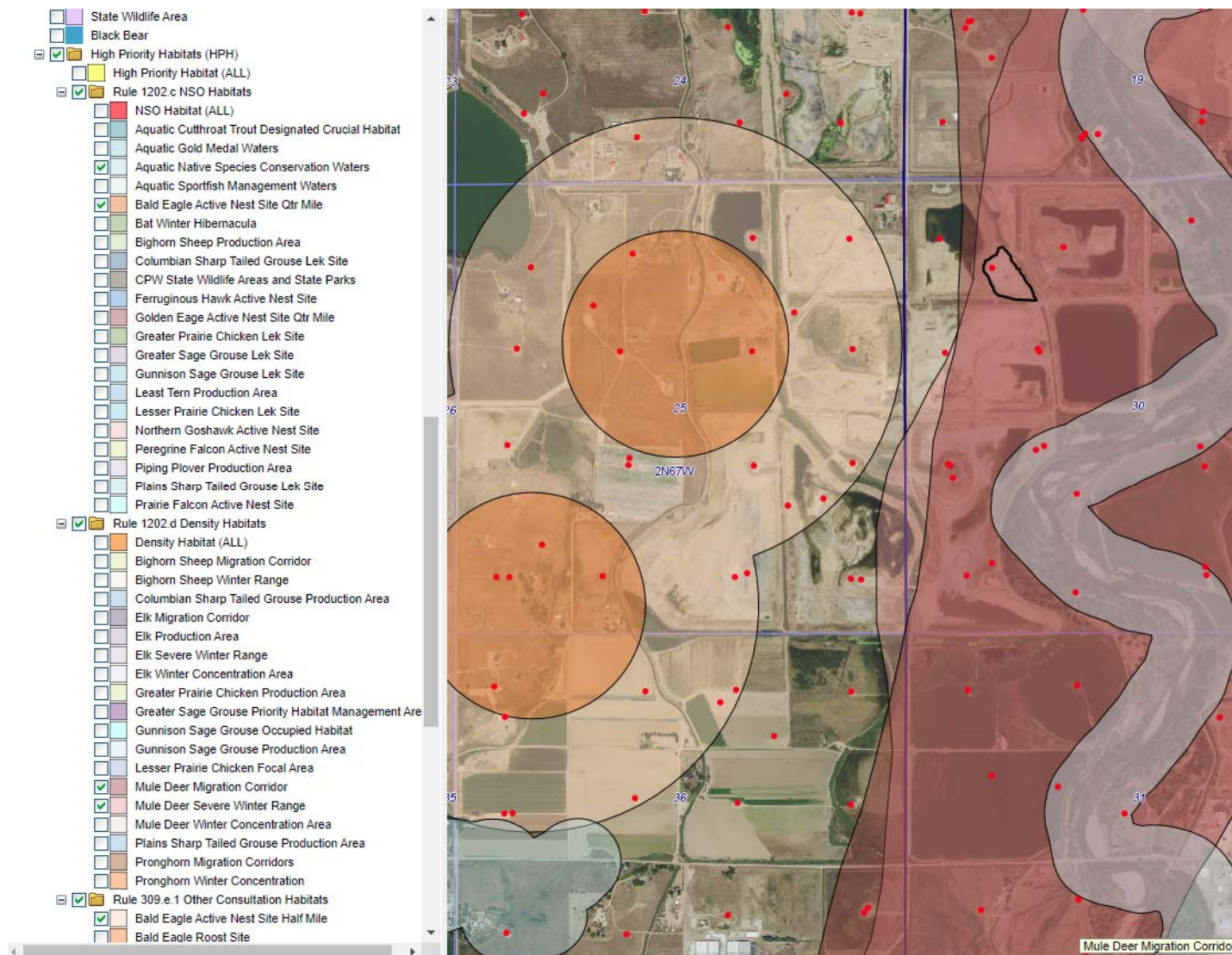
THINK SAFETY FIRST!



On Wed, Mar 17, 2021 at 8:58 AM Sean Dolfinger <sean.dolfinger@iptenergyservices.com> wrote:

Brandon,

Thank you for getting back with me so quickly. I really hope that this is the case, and that we are not within a HPH. However, the map layers I show on my COGCC webmapper do have the "Mule Deer Migration Corridor" and "Mule Deer Severe Winter Range" overlapping our location (in black below). Could you all please confirm if these do not apply in our case? It seems to me that Rule 1202.d. applies here, but I might be missing something. It certainly would make our lives easier if we do not qualify as a HPH location.



I appreciate all of your help. Please feel free to call me and chat if that's easier for you.

Sean Dolfinger

Associate Drilling Engineer

O: 720-420-5743 | M: 303-946-7617

sean.dolfinger@iptenergyservices.com



Integrated Petroleum Technologies

1707 Cole Blvd, Suite 200

Golden, CO 80401

From: Marette - DNR, Brandon <brandon.marette@state.co.us>
Sent: Tuesday, March 16, 2021 4:57 PM
To: Sean Dolfinger <sean.dolfinger@iptenergyservices.com>
Cc: Chris Mettenbrink - DNR <chris.mettenbrink@state.co.us>
Subject: Re: CPW FAQ Question Submitted from Website

Good afternoon Sean,

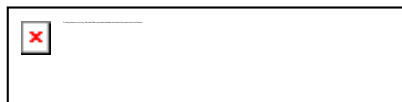
After talking with Chris and viewing the [COGCC webmapper](#) for your location (see screenshot below), we determined that your site is not within a High Priority Habitat. Therefore, no Wildlife Mitigation Plan or direct/indirect mitigation fees/acres will be required of this project.

However, please note that IPT should still create a simple Wildlife Protection Plan to protect other species (such as any birds like killdeer that may nest in areas with no vegetation, and also to prevent the spread of Aquatic Nuisance Species if hoses will be involved) [[see 1202.a.\(1-10\)](#)]. Furthermore, CPW doesn't need to review your WPP, it's more of a due diligence document if an inspector or concerned citizen questions a certain practice. That being said, since it's your first one, I'm willing to review what you come up with (no pressure).

Regards,

Brandon B. Marette, CWB[®]

Northeast Region Energy Liaison and Land Use Coordinator



Direct [\(303\) 291-7327](tel:(303)291-7327)

[6060 Broadway, Denver, CO 80216](#)

brandon.marette@state.co.us



THINK SAFETY FIRST!



On Tue, Mar 16, 2021 at 4:25 PM Sean Dolfinger <sean.dolfinger@iptenergyservices.com> wrote:

Thanks Brandon,

If all goes to plan we would be submitting the Form 2A in maybe 2 weeks.

Sean Dolfinger

Associate Drilling Engineer

O: 720-420-5743 | M: 303-946-7617

sean.dolfinger@iptenergyservices.com



Integrated Petroleum Technologies

1707 Cole Blvd, Suite 200

Golden, CO 80401

www.iptenergyservices.com

From: Marette - DNR, Brandon <brandon.marette@state.co.us>
Sent: Tuesday, March 16, 2021 4:18 PM
To: Sean Dolfinger <sean.dolfinger@iptenergyservices.com>
Cc: Chris Mettenbrink - DNR <chris.mettenbrink@state.co.us>
Subject: Fwd: CPW FAQ Question Submitted from Website

Good afternoon Sean,

Thanks for your call today and for your e-mail (no, it wasn't too much info).

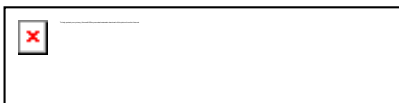
I've cc'd local District Wildlife Manager Chris Mettenbrink. Let me chat with him and get back to you.

When are you planning on submitting your Form 2A application?

Regards,

Brandon B. Marette, CWB[®]

Northeast Region Energy Liaison and Land Use Coordinator



Direct [\(303\) 291-7327](tel:3032917327)

[6060 Broadway, Denver, CO 80216](http://6060Broadway.Denver.CO.80216)

brandon.marette@state.co.us

[CPW's Energy Webpage](#)



THINK SAFETY FIRST!



----- Forwarded message -----

From: **Sean Dolfinger** <sean.dolfinger@iptenergyservices.com>

Date: Tue, Mar 16, 2021 at 1:58 PM

Subject: RE: CPW FAQ Question Submitted from Website

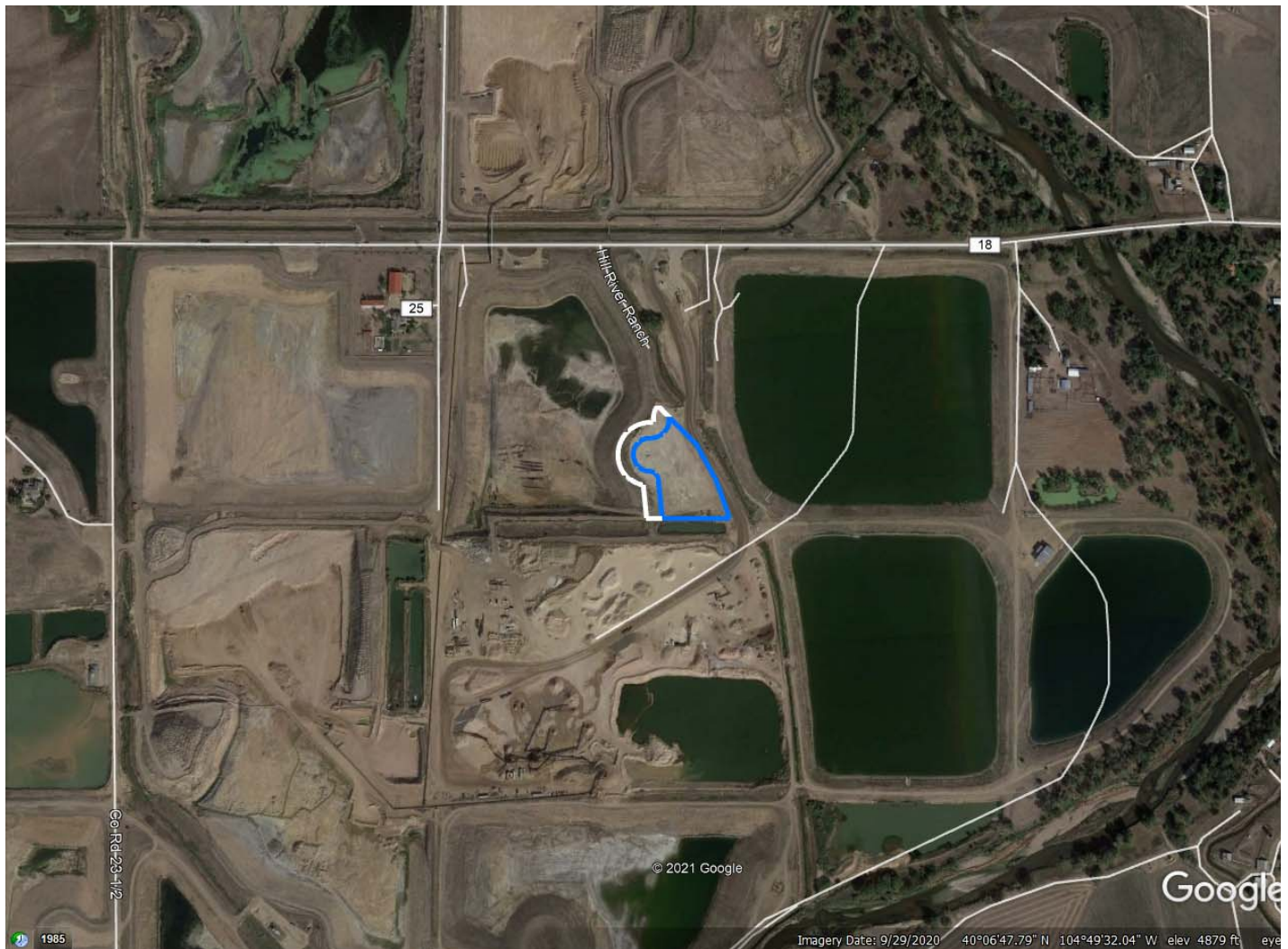
To: Marette - DNR, Brandon <brandon.marette@state.co.us>

Brandon,

Thank you so much for taking the time to chat with me this afternoon. This location will be for Petro Operating, LLC and is called the LG Everist 2N66W30 Pad. Pad location is in NWNW Section 30 – T2N – R66W. As I mentioned on the phone, the proposed location falls within LG Everist's active gravel mining operation, screenshot of the location attached. I have also included location photos, although these were taken roughly 11 months ago. We did have an employee drive out to the location last week to confirm the mining operations are still ongoing and active.

This location falls within the Mule Deer Migration Corridor and Mule Deer Severe Winter Range HPHs. It is roughly 1700' from the edge of the location to the edge of the Aquatic Native Species Conservation Waters at the South Platte.

In a perfect world, construction would begin Q2 of this year and take approximately six months to complete operations and turn over to production.



I've probably included more information than necessary, but I think the attached diagrams all provide valuable information. Please let me know if you need anything else from me at this time.

I appreciate your help and look forward to working together on this and future projects.

Sean Dolfinger

Associate Drilling Engineer

O: 720-420-5743 | M: 303-946-7617

sean.dolfinger@iptenergyservices.com



Integrated Petroleum Technologies

1707 Cole Blvd, Suite 200

Golden, CO 80401

www.iptenergyservices.com

From: Marette - DNR, Brandon <brandon.marette@state.co.us>

Sent: Thursday, March 11, 2021 4:31 PM

To: Sean Dolfinger <sean.dolfinger@iptenergyservices.com>

Subject: Fwd: CPW FAQ Question Submitted from Website

Hi Sean,

My name is Brandon Marette, and I'm CPW's NE Region Energy Liaison, specifically who you need to talk to re: SB181.

Can you call me tomorrow (Fri) outside of 9-10 a.m.?

Regards,

Brandon B. Marette, CWB[®]

Northeast Region Energy Liaison and Land Use Coordinator



Direct [\(303\) 291-7327](tel:3032917327)

[6060 Broadway, Denver, CO 80216](#)

brandon.marette@state.co.us

[CPW's Energy Webpage](#)



THINK SAFETY FIRST!



The following question has been submitted through the CPW FAQ Ask A Question page.

Hello, I work for IPT and we are permitting an Oil and Gas location in Fort Lupton for our client. As part of the new rules we are required to consult with CPW, as the location falls within a High Priority Habitat (HPH). I am looking for information on who to contact about a consultation, how the process goes, timeline, etc. If you could please provide a contact for an Oil and Gas Pre-Application consultation I would greatly appreciate it! Thank you, Sean

Subject Oil and Gas Consultation
Topic State Lands Regulations
Subtopic Other
From Sean Dolfinger
Senders Email sean.dolfinger@iptenergyservices.com