

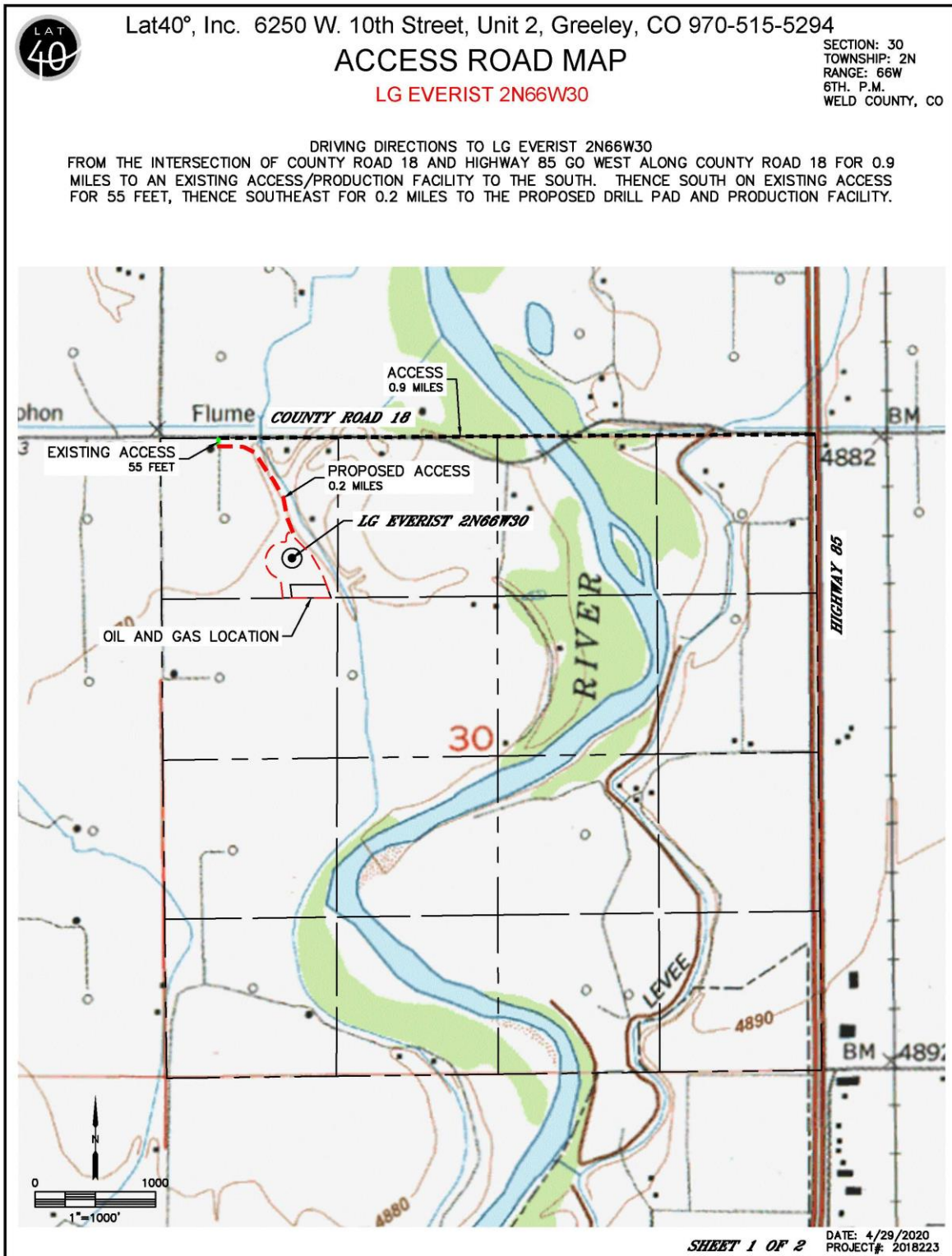
## **Transportation Plan**

### **Petro Operating Company, LLC**

**LG Everist Pad – NWNW Sec. 30 – T1N – R66W**  
**Fort Lupton, CO**

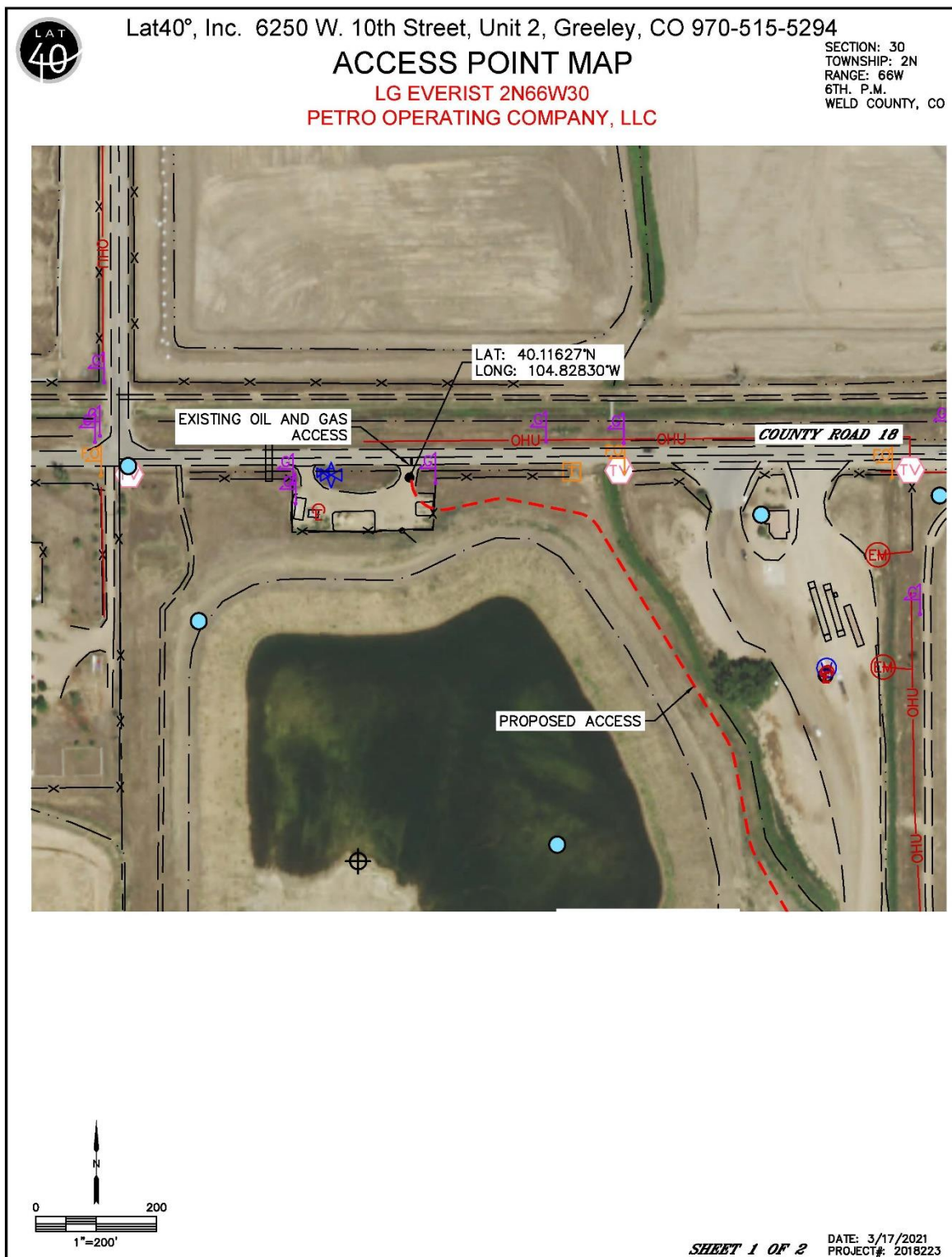
Petro Operating Company, LLC (Petro) plan for the appropriate handling of transportation from oil and gas activity at the LG Everist location is described below:

- Petro will utilize a lease access road from Weld County Road 18 for all traffic associated with construction and production of the wells proposed in this application. The road will be properly graded for adequate drainage and shall be surfaced and maintained to prevent dust and mud accumulation and to provide sufficient access for fire protection. Culverts and bridges shall be utilized where necessary.
- All roads and access points will be constructed to a minimum standard of 20 feet wide and will be capable of supporting 75,000 lbs.
- Strict speed limits will be followed on all lease and access roads, and all third-party vendors made aware of these.
- Water trucks will be available on location for dust suppression as needed.
- Truck traffic will be reduced by piping completion water to location. This will reduce truck traffic by over 29,000 trips for completion water alone.
- Access road diagrams are included below, along with traffic count estimates used in calculations for the Form 2B.











Lat40°, Inc. 6250 W. 10th Street, Unit 2, Greeley, CO 970-515-5294

## ACCESS POINT PICTURES

LG EVERIST 2N66W30  
PETRO OPERATING COMPANY, LLC

SECTION: 30  
TOWNSHIP: 2N  
RANGE: 66W  
6TH. P.M.  
WELD COUNTY, CO  
DATE: 4/27/2020



VIEW NORTH



VIEW WEST (CR 18)



VIEW EAST (CR 18)



VIEW SOUTH

**SHEET 2 OF 2**

DATE: 3/17/2021  
PROJECT#: 2018223

## Petro Operating - LG Everist Pad - OIL &amp; GAS ESTIMATED VEHICLE TRIP COUNT

Feb-21

Vehicle Type		Load Weight <sup>1</sup>	Number of Vehicles	Trips per vehicle <sup>2</sup>	UOM	Number	Total Trips <sup>3</sup>	Notes		
WELL PAD CONSTRUCTION	Construct Drilling and Production Pad - 14 days duration						46	TOTAL TRIPS	Avg Daily	3
Dozer	in loaded, out loaded	80,000	1	2	Pad	1	2			
Motor Grader	in loaded, out loaded	70,000	1	2			2			
Backhoe	in loaded, out loaded	45,000	1	2			2			
Tandem End Dump	in loaded	54,000	5	2			10	Hauling gravel, if necessary		
Tandem End Dump	out empty	24,000	5	2			10	Hauling gravel, if necessary		
Supervisor pickups		6,500	4	5			20			
DRILLING RIG MOB & DEMOB	Move Equipment on and off location - 7 days duration						116	TOTAL TRIPS	Avg Daily	17
Suction Pit	in loaded, out loaded	75,000	1	2	Pad	1	2			
Shale Shaker Pit	in loaded, out loaded	75,000	1	2			2			
Substructure	in loaded, out loaded	75,000	1	2			2			
Rig Carrier	in loaded, out loaded	92,000	1	2			2			
Derrick, blocks, drilling line	in loaded, out loaded	65,000	1	2			2			
Top Doghouse/Water tank	in loaded, out loaded	70,000	1	2			2			
Bottom Doghouse	in loaded, out loaded	65,000	1	2			2			
Generator House	in loaded, out loaded	60,000	1	2			2			
Fuel Tank	in loaded, out loaded	30,000	1	2			2			
Catwalks & pipe racks	in loaded, out loaded	50,000	1	2			2			
Junk Basket	in loaded, out loaded	50,000	1	2			2			
#1 Mud Pump	in loaded, out loaded	80,000	1	2			2			
#2 Mud Pump	in loaded, out loaded	90,000	1	2			2			
9000' 4" pipe and 21 collars	in loaded, out loaded	75,000	3	2			6			
Loader w/ Bucket-Forks	in loaded, out loaded	60,000	1	2			2			
#2 Light Plant	in loaded, out loaded	60,000	1	2			2			
Premix Tank	in loaded, out loaded	45,000	1	2			2			
Trash Basket	in loaded, out loaded	10,000	1	2			2			
Accommodations Trailers	in loaded, out loaded	32,000	3	2			6			
Septic/Fresh water system	in loaded, out loaded	15,000	1	2			2			
PortaPotties	in loaded, out loaded	12,000	1	2			2			
Mobilization crew pickups		6,500	6	4			24			
Mobilization: Haul trucks	out empty	30,000	21	1			21			
Demobilization: Haul tucks	in empty	30,000	21	1			21			
DRILLING	Drill 12 x 1.5 mile Hz Wells - 96 days duration						1742	TOTAL TRIPS	Avg Daily	18
Water truck - 120 bbl Semi	in loaded	75,000	1	15	Well	12	180	Drilling Fluids are Recycled		
Water truck - 120 bbl Semi	out empty	30,000	1	15			180			
Drilling Fluid Chemicals - Tandem	in loaded	54,000	1	1			12			
Drilling Fluid Chemicals - Tandem	out empty	24,000	1	1			12			
Fuel truck - Tandem	in loaded	50,000	1	2			24			
Fuel truck - Tandem	out empty	20,000	1	2			24	Average Load out per 1 mile lat		
Cuttings haul truck - Tandem	out loaded	54,000	1	25			300			
Cuttings haul truck - Tandem	in empty	24,000	1	25			300			
Crew Vehicle		6,500	2	8			192			
Supervisor Vehicle		6,500	2	8			192			
Potable water	in loaded, out empty	20,000	1	3			36	Note - Logging once per pad		
Septic		20,000	1	2			24			
Logging truck		45,000	1	2			2			
Surface Casing pipe trucks	in loaded	75,000	1	1			12			
Surface Casing pipe trucks	out empty	30,000	1	1			12			
Production Casing pipe trucks	in loaded	75,000	3	1			36			
Production Casing pipe trucks	out empty	30,000	3	1			36			
Surface Casing Cement pickup		6,500	1	2			24			
Surface Casing Cement pump truck		75,000	1	2			24			
Surface Casing Cement bulk truck	in loaded	75,000	1	1			12			
Surface Casing Cement bulk truck	out empty	30,000	1	1			12			
Production Casing Cement pickup		6,500	1	2			24			
Production Casing Cement pump truck		75,000	1	2			24			
Production Casing Cement bulk trucks	in loaded	75,000	2	1			24			
Production Casing Cement bulk trucks	out empty	30,000	2	1			24			

## Petro Operating - LG Everist Pad - OIL &amp; GAS ESTIMATED VEHICLE TRIP COUNT

Feb-21

Vehicle Type		Load Weight¹	Number of Vehicles	Trips per vehicle²	UOM	Number	Total Trips³	Notes		
STIMULATION	Fracture 12 wells - 60 days duration						2520	TOTAL TRIPS	Avg Daily	42
Downhole blender		75,000	1	2	Pad	1	2	Move In and Out Frac and Aux Equipment		
Pre-gel blender		75,000	1	2			2			
Pump trucks		75,000	4	2			8			
Iron truck		54,000	1	2			2			
Control Van		50,000	1	2			2			
Wireline Truck - CBL, Plug and Perf		45,000	1	2			2			
Water storage tank delivery trucks	in & out loaded	45,000	1	15			15			
Water storage tank delivery trucks	in & out empty	25,000	1	15	15					
Chemical truck	in loaded	50,000	1	1	Well	12	12			
Chemical truck	out empty	20,000	1	1			12			
Supervisor and Crew Pickups		6,500	2	2			48			
Crew Bus		15,000	1	6			192			
Fuel truck	in loaded	50,000	1	1			12			
Fuel truck	out empty	30,000	1	1			12			
Gel truck	in loaded	75,000	1	1			12			
Gel truck	out empty	30,000	1	1			12			
Sand trucks	in loaded	75,000	90	1			1080			
Sand trucks	out empty	25,000	90	1			1080			
Water truck - 120 bbl Semi	in loaded						0	~297,500 bbls/well - Piped to Location		
Water truck - 120 bbl Semi	out empty						0			
COMPLETION	Drill out Plugs and Run Tubing 12 wells - 42 days						138	TOTAL TRIPS	Avg Daily	3
Completion Rig		90,000	1	2	Pad	1	2	Move in and Move out Completion Rig		
Breakdown Truck		50,000	1	2			2			
Kill Fluid Chemical - Tandem	Loaded In	54,000	1	1			1			
Kill Fluid Chemical - Tandem	Empty Out	24,000	1	1			1			
Frac Water Trucks	Loaded In	75,000			Well	12	0	Water is piped to site		
Supervisor pickups		6,500	2	3			72			
Crew pickups		6,500	1	3			36			
Tubing trucks	in loaded	75,000	1	1			12			
Tubing trucks	out empty	30,000	1	1			12			
FLOWBACK OPERATIONS	Flowback 12 wells after Completion - 30 days						4344	TOTAL TRIPS	Avg Daily	145
Water Trucks - 140 bbl Semi	Empty In	30,000	1	179	Well	12	2148	25% of frac water is expected to be flowed back		
Water Trucks - 140 bbl Semi	Loaded Out	75,000	1	179			2148			
Supervisor pickups		6,500	2	2			48			
TANK BATTERY CONSTRUCTION	Construct 12 Single Well Batteries - 63 days duration						347	TOTAL TRIPS	Avg Daily	6
Backhoe		45,000	1	2	Pad	1	2	Landscaping etc		
Tool truck		45,000	1	12			12			
Equipment delivery - tanks	in loaded	50,000	15	1			15			
	out empty	24,000	15	1			15			
Equipment delivery - production equipment	in loaded	50,000	15	1			15			
	out empty	24,000	15	1			15			
Flowlines and Fittings	in loaded	50,000	6	1			6			
	out empty	24,000	6	1			6			
Gas Processing - VRU, piping, Lact etc	in loaded	50,000	3	1			3			
	out empty	24,000	3	1			3			
Haul trucks - misc		35,000	3	1			3			
Supervisor Pickups		6,500	2	63			126			
Crew Pickups - includes welder		6,500	2	63			126			
Total Development Trips							9253			

Petro Operating - LG Everist Pad - OIL & GAS ESTIMATED VEHICLE TRIP COUNT

Feb-21

Vehicle Type		Load Weight <sup>1</sup>	Number of Vehicles	Trips per vehicle <sup>2</sup>	UOM	Number	Total Trips <sup>3</sup>	Notes		
PRODUCTION FIRST YEAR	Oil and Water Offtake - 365 days						3226	TOTAL TRIPS	Avg Daily	9
Pumper gauger pickup		6,500	1	730	Pad	1	730	Once Daily		
Oil haul truck	out loaded	85,000	1	0	Well	12	0	LACT unit will transfer oil to pipeline		
Oil haul truck	in empty	25,000	1	0			0			
Water haul truck	out loaded	75,000	1	104			1248	2 loads per well per week		
Water haul truck	in empty	30,000	1	104			1248			
PRODUCTION NEXT 19 YEARS	Oil and Water Offtake - 6935 days duration						37582	TOTAL TRIPS	Avg Daily	5
Pumper gauger pickup		6,500	1	13870			13870	Once Daily		
Oil haul truck	out loaded	85,000	1	0	Well	12	0	LACT unit will transfer oil to pipeline		
Oil haul truck	in empty	25,000	1	0			0			
Water haul truck	out loaded	75,000	1	52			11856	1 load per well per week		
Water haul truck	in empty	30,000	1	52			11856			
WELL ABANDONMENT (after 20 years)	Abandon 12 well - 36 days duration						506	TOTAL TRIPS	Avg Daily	14
Completion Rig		90,000	1	2	Pad	1	2			
Supervisor pickups		6,500	4	6	Well	12	288			
Crew pickups		6,500	1	6			72			
Tubing trucks	out loaded	75,000	1	1			12			
Tubing trucks	in empty	30,000	1	1			12			
Surface Casing Cement pickup		6,500	1	2			24			
Surface Casing Cement pump truck		75,000	1	2			24			
Surface Casing Cement bulk truck	in loaded	75,000	1	1			12			
Surface Casing Cement bulk truck	out empty	30,000	1	1			12			
Wireline truck		45,000	1	2			24			
Water truck - 120 bbl Semi	in loaded	75,000	1	1			12			
Water truck - 120 bbl Semi	out empty	30,000	1	1			12			

<sup>1</sup> All load weights include haul trucks, if applicable

<sup>2</sup> A trip is defined as one-way event, ie one vehicle going to the well will be counted as two trips, 1 in & 1 out

<sup>3</sup> Total trips for each phase, not trips per day