

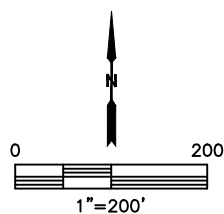
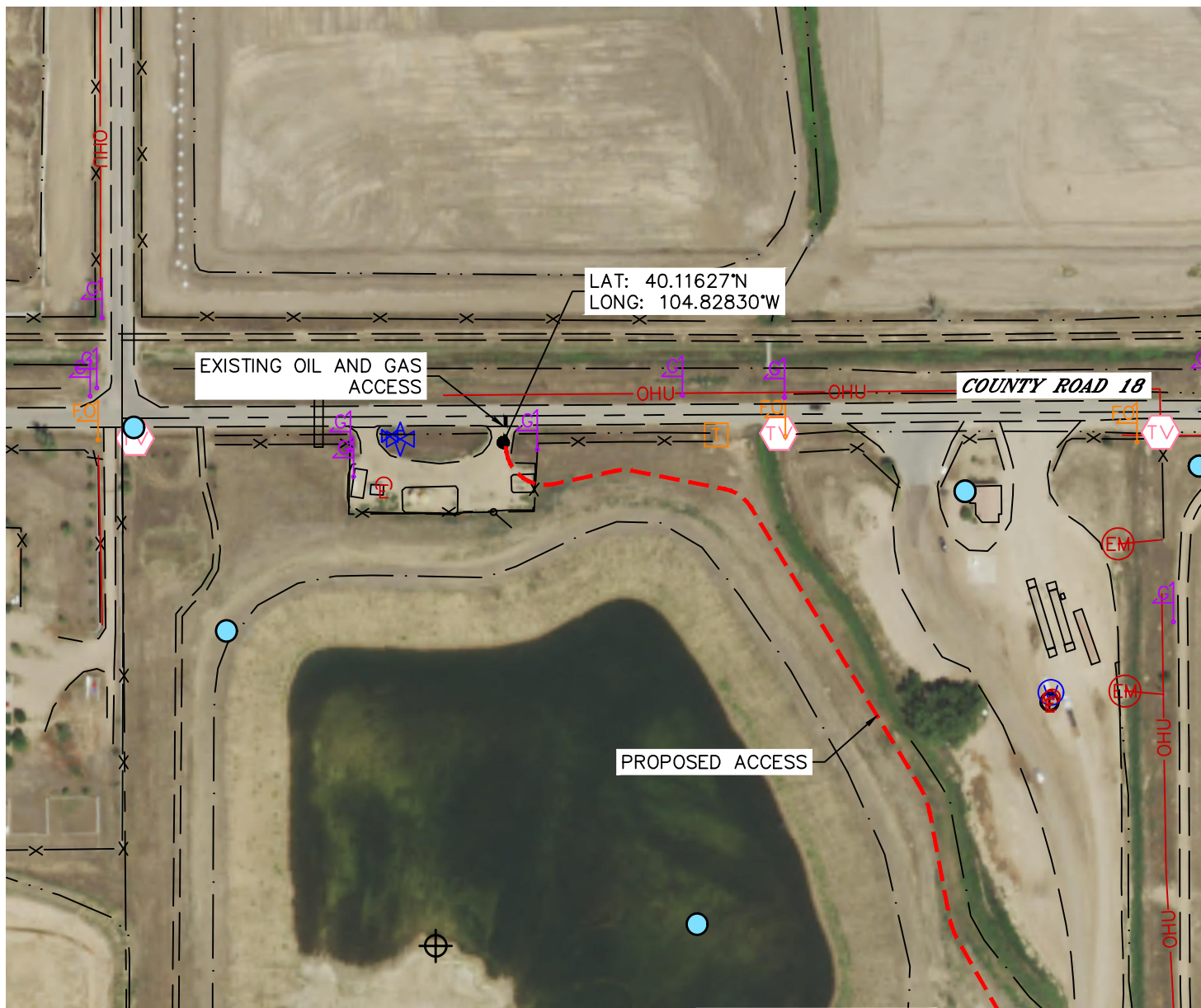


Lat40°, Inc. 6250 W. 10th Street, Unit 2, Greeley, CO 970-515-5294

ACCESS POINT MAP

LG EVERIST 2N66W30
PETRO OPERATING COMPANY, LLC

SECTION: 30
TOWNSHIP: 2N
RANGE: 66W
6TH. P.M.
WELD COUNTY, CO





Lat40°, Inc. 6250 W. 10th Street, Unit 2, Greeley, CO 970-515-5294

ACCESS POINT PICTURES

LG EVERIST 2N66W30
PETRO OPERATING COMPANY, LLC

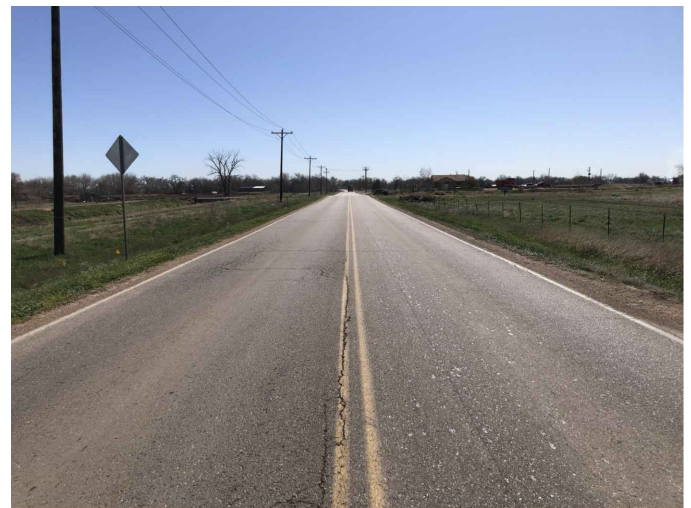
SECTION: 30
TOWNSHIP: 2N
RANGE: 66W
6TH. P.M.
WELD COUNTY, CO
DATE: 4/27/2020



VIEW NORTH



VIEW WEST (CR 18)



VIEW EAST (CR 18)



VIEW SOUTH