



Lat40°, Inc. 6250 W. 10th Street, Unit 2, Greeley, CO 970-515-5294

## REFERENCE AREA PICTURES

**LG EVERIST 2N66W30**  
**PETRO OPERATING COMPANY, LLC**

SECTION: 30  
TOWNSHIP: 2N  
RANGE: 66W  
6TH. P.M.  
WELD COUNTY, CO  
DATE: 2/10/2021



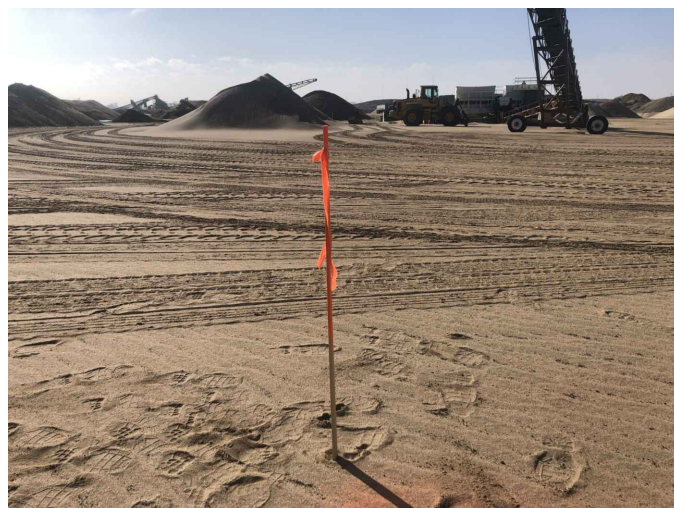
VIEW NORTH



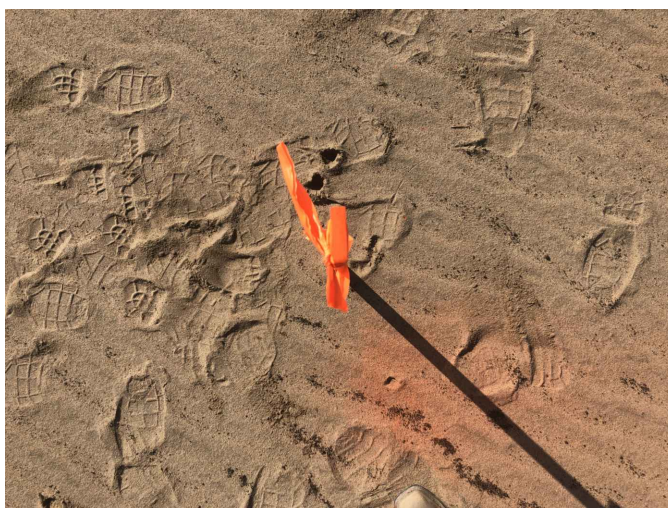
VIEW EAST



VIEW SOUTH



VIEW WEST



VIEW TOP

DATE: 3/17/2021  
PROJECT#: 2018223