



Lat40°, Inc. 6250 W. 10th Street, Unit 2, Greeley, CO 970-515-5294

## LOCATION PICTURES

LG EVERIST 2N66W30  
PETRO OPERATING COMPANY, LLC

SECTION: 30  
TOWNSHIP: 2N  
RANGE: 66W  
6TH. P.M.  
WELD COUNTY, CO  
DATE: 2/10/2021



VIEW 1 – NORTH



VIEW 2 – NORTHEAST



VIEW 3 – EAST



VIEW 4 – SOUTHEAST



VIEW 5 – SOUTH



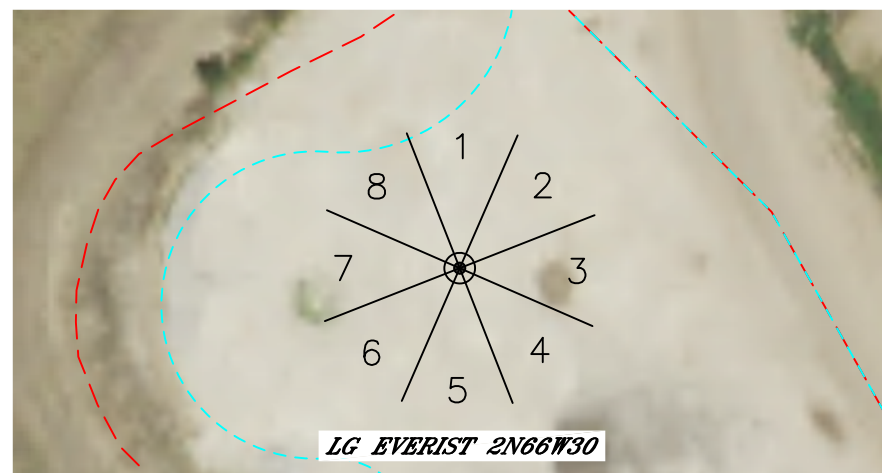
VIEW 6 – SOUTHWEST



VIEW 7 – WEST



VIEW 8 – NORTHWEST



FIELD OF VIEW DIAGRAM  
N.T.S.

DATE: 3/17/2021  
PROJECT#: 2018223