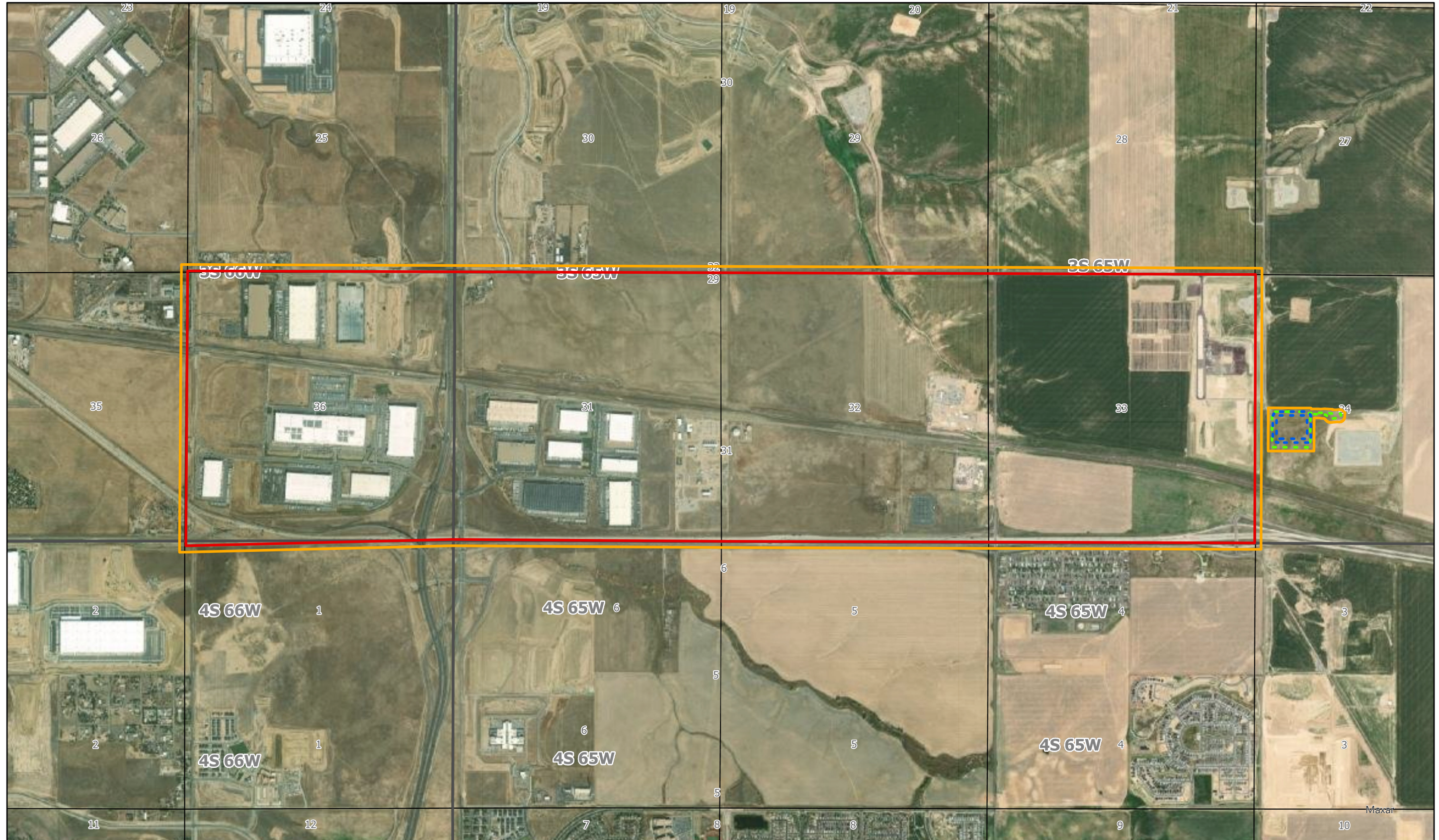


BLUE OIL & GAS DEVELOPMENT PLAN

SECTION 34, TOWNSHIP 3 SOUTH, RANGE 65 WEST, 6th P.M., ADAMS COUNTY, COLORADO



Legend

- ▬ Proposed DSU
- ▬ Proposed OGD Boundary
- ⬮ Oil & Gas Location
- ⬮ Working Pad Surface

CRESTONE PEAK RESOURCES OPERATING, LLC IS A WHOLLY OWNED SUBSIDIARY OF CIVITAS RESOURCES, INC.

