

**VERDAD RESOURCES LLC
ST JOHNS CATHOLIC CHURCH #41-31
SECTION 31, T9N, R58W, 6th P.M.
WELD COUNTY, COLORADO**

DATE:

DESCRIPTION:

[illegible]

Well Name	Lat: (NAD 27)	Long: (NAD 27)	Lat: (NAD 83)	Long: (NAD 83)	Section	Township	Range	Qtr./Qtr.	DATE COMPLETED	PDOP	OPERATOR
ST JOHNS CATHOLIC CHURCH #41-31	40°42'46.41" (40.712891)	103°53'56.44" (103.899011)	40°42'46.36" (40.712878)	103°53'58.25" (103.899515)	31	T9N	R58W	NE/NE	2/8/2022	1.2	ORION RICE





PHOTO: VIEW OF AS-DRILLED LOCATION

CAMERA ANGLE: NORTHERLY



PHOTO: VIEW OF AS-DRILLED LOCATION

CAMERA ANGLE: EASTERLY

VERDAD RESOURCES LLC

**ST JOHNS CATHOLIC CHURCH #41-31
NE 1/4 NE 1/4, SECTION 31, T9N, R58W, 6th P.M.
WELD COUNTY, COLORADO**



UELS, LLC
Corporate Office * 85 South 200 East
Vernal, UT 84078 * (435) 789-1017

TAKEN BY	O.R., J.W.	02-08-22	
DRAWN BY	L.K.	02-09-22	
LOCATION PHOTOS			PHOTO 1

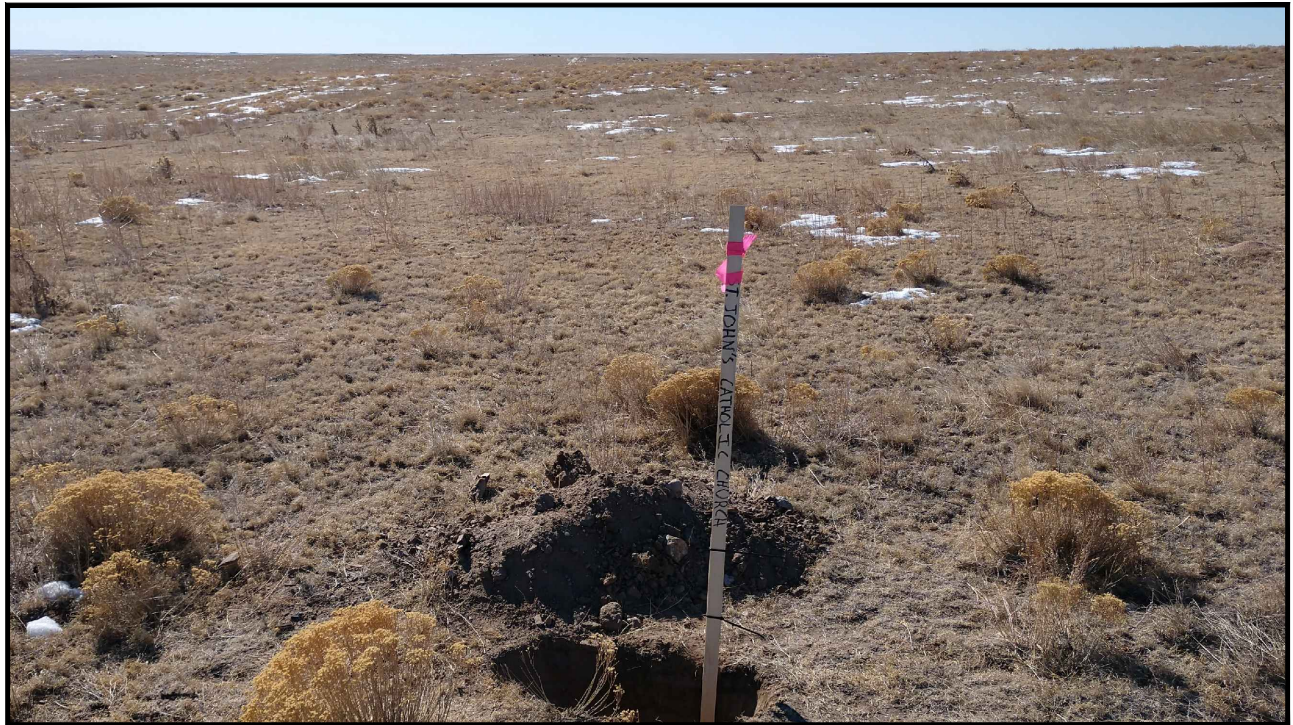


PHOTO: VIEW OF AS-DRILLED LOCATION

CAMERA ANGLE: SOUTHERLY



PHOTO: VIEW OF AS-DRILLED LOCATION

CAMERA ANGLE: WESTERLY

VERDAD RESOURCES LLC

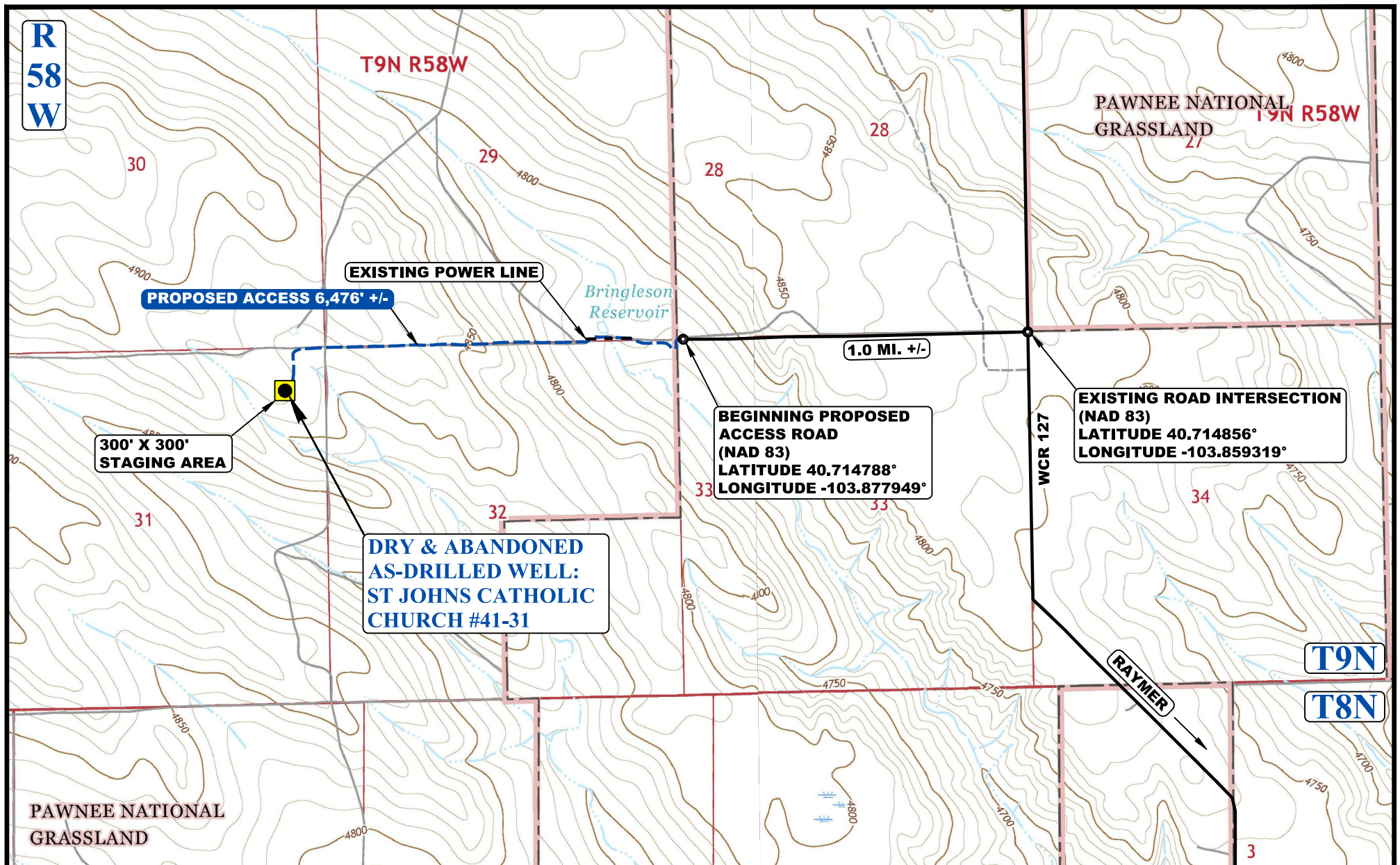
**ST JOHNS CATHOLIC CHURCH #41-31
NE 1/4 NE 1/4, SECTION 31, T9N, R58W, 6th P.M.
WELD COUNTY, COLORADO**

UELS, LLC

Corporate Office * 85 South 200 East
Vernal, UT 84078 * (435) 789-1017

TAKEN BY	O.R., J.W.	02-08-22	
DRAWN BY	L.K.	02-09-22	
LOCATION PHOTOS			PHOTO 2





LEGEND:

- EXISTING ROAD
- PROPOSED ROAD
- EXISTING POWER LINE

● DRY & ABANDONED AS-DRILLED WELL



UELS, LLC
 Corporate Office * 85 South 200 East
 Vernal, UT 84078 * (435) 789-1017



VERDAD RESOURCES LLC

ST JOHNS CATHOLIC CHURCH #41-31
NE 1/4 NE 1/4, SECTION 31, T9N, R58W, 6th P.M.
WELD COUNTY, COLORADO

SURVEYED BY	O.R., J.W.	02-08-22	SCALE
DRAWN BY	L.K.	02-09-22	1 : 24,000
ACCESS ROAD MAP			