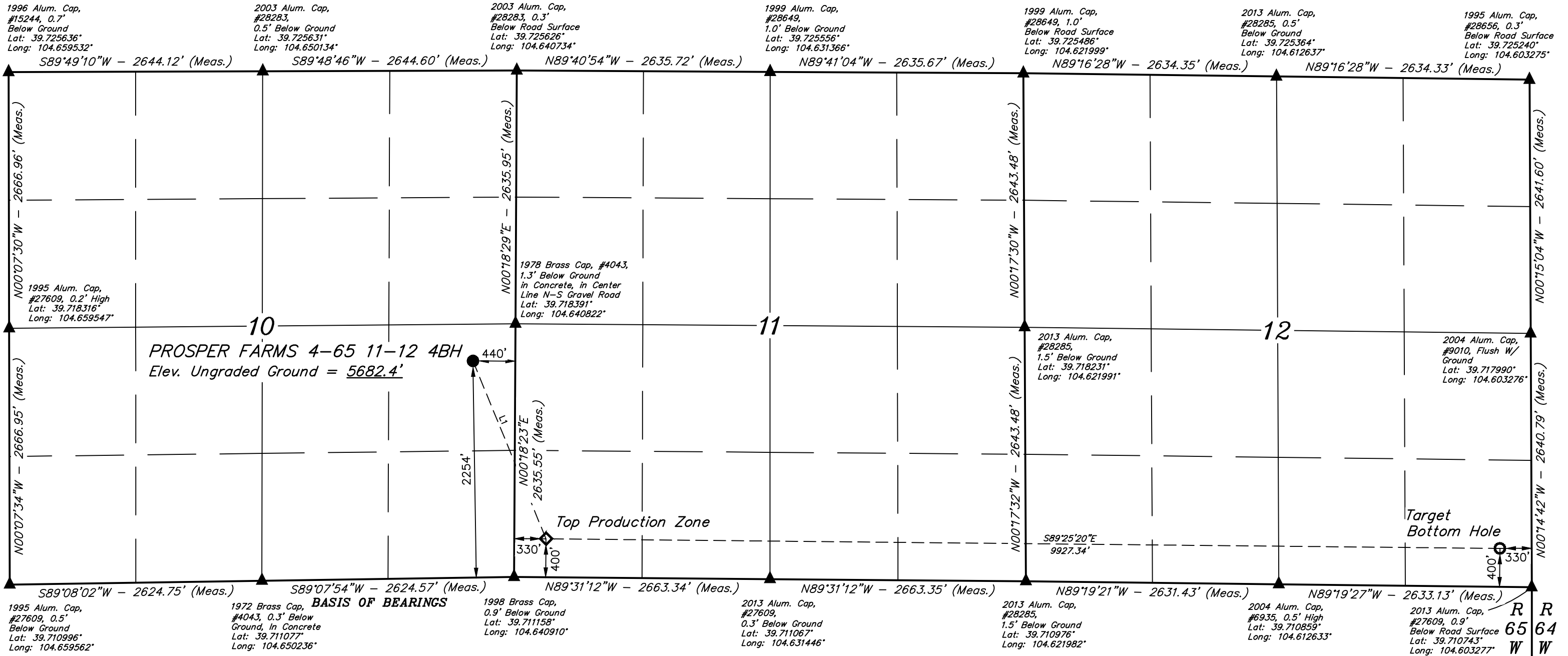


PROSPER FARMS 4-65 11-12 4BH
NE 1/4 SE 1/4, SECTION 10, T4S, R65W, 6th P.M.
ARAPAHOE COUNTY, COLORADO

BASIS OF ELEVATION
OPUS SOLUTION GENERATED NAVD 88



1996 Alum. Cap,
#15244, 0.7'
Below Ground
Lat: 39.725636°
Long: 104.659532°

2003 Alum. Cap,
#28283,
0.5' Below Ground
Lat: 39.725631°
Long: 104.650134°

2003 Alum. Cap,
#28283, 0.3'
Below Road Surface
Lat: 39.725626°
Long: 104.640734°

1999 Alum. Cap,
#28649,
1.0' Below Ground
Lat: 39.725556°
Long: 104.631366°

1999 Alum. Cap,
#28649, 1.0'
Below Road Surface
Lat: 39.725486°
Long: 104.621999°

2013 Alum. Cap,
#28285, 0.5'
Below Ground
Lat: 39.725364°
Long: 104.612637°

1995 Alum. Cap,
#28656, 0.3'
Below Road Surface
Lat: 39.725240°
Long: 104.603275°

1995 Alum. Cap,
#27609, 0.2' High
Lat: 39.718316°
Long: 104.659547°

1978 Brass Cap, #4043,
1.3' Below Ground
in Concrete, in Center
Line N-S Gravel Road
Lat: 39.718391°
Long: 104.640822°

2013 Alum. Cap,
#28285,
1.5' Below Ground
Lat: 39.718231°
Long: 104.621991°

2004 Alum. Cap,
#9010, Flush W/
Ground
Lat: 39.717990°
Long: 104.603276°

1995 Alum. Cap,
#27609, 0.5'
Below Ground
Lat: 39.710996°
Long: 104.659562°

1972 Brass Cap,
#4043, 0.3' Below
Ground, in Concrete
Lat: 39.711077°
Long: 104.650236°

1998 Brass Cap,
0.9' Below Ground
Lat: 39.711158°
Long: 104.640910°

2013 Alum. Cap,
#27609,
0.3' Below Ground
Lat: 39.711067°
Long: 104.631446°

2013 Alum. Cap,
#28285,
1.5' Below Ground
Lat: 39.710976°
Long: 104.621982°

2004 Alum. Cap,
#6935, 0.5' High
Lat: 39.710859°
Long: 104.612633°

2013 Alum. Cap,
#27609, 0.9'
Below Road Surface
Lat: 39.710743°
Long: 104.603277°

R R
65 64
W W

NOTE:
Distances referenced
on plat to section lines
are perpendicular.

CERTIFICATE
THIS IS TO CERTIFY THAT THE ABOVE PLAT WAS PREPARED FROM THE
NOTES OF ACTUAL SURVEYS MADE BY ME OR UNDER MY SUPERVISION
AND THAT THE SAME ARE TRUE AND CORRECT TO THE BEST OF MY
KNOWLEDGE AND BELIEF.



- LEGEND:
- = PROPOSED WELLHEAD.
 - = TARGET BOTTOM HOLE.
 - ◇ = TOP PRODUCTION ZONE.
 - ▲ = SECTION CORNERS LOCATED. (NAD 83)

LINE TABLE		
LINE	DIRECTION	LENGTH
L1	S22°19'37"E	2001.01'



NAD 83 (SURFACE LOCATION)	NAD 83 (TOP PRODUCTION ZONE)	NAD 83 (TARGET BOTTOM HOLE)
LATITUDE = 39°43'02.40" (39.717333°)	LATITUDE = 39°42'44.08" (39.712245°)	LATITUDE = 39°42'42.68" (39.711855°)
LONGITUDE = 104°38'32.64" (104.642399°)	LONGITUDE = 104°38'23.01" (104.639724°)	LONGITUDE = 104°36'16.02" (104.604449°)
NAD 27 (SURFACE LOCATION)	NAD 27 (TOP PRODUCTION ZONE)	NAD 27 (TARGET BOTTOM HOLE)
LATITUDE = 39°43'02.45" (39.717346°)	LATITUDE = 39°42'44.13" (39.712258°)	LATITUDE = 39°42'42.73" (39.711868°)
LONGITUDE = 104°38'30.75" (104.641875°)	LONGITUDE = 104°38'21.12" (104.639200°)	LONGITUDE = 104°36'14.14" (104.603927°)
STATE PLANE NAD 83 (CO. CEN.)	STATE PLANE NAD 83 (CO. CEN.)	STATE PLANE NAD 83 (CO. CEN.)
N: 1687306.72' E: 3241250.81'	N: 1685460.35' E: 3242020.87'	N: 1685414.37' E: 3251945.62'
STATE PLANE NAD 27 (CO. CEN.)	STATE PLANE NAD 27 (CO. CEN.)	STATE PLANE NAD 27 (CO. CEN.)
N: 687299.09' E: 2241404.38'	N: 685452.76' E: 2242174.47'	N: 685406.94' E: 2252099.14'

PDOP = 1.5

REV: 3 01-20-21 C.IVIE (TPZ & BHL MOVE)

UINTAH
ENGINEERING & LAND SURVEYING

UELS, LLC
Corporate Office * 85 South 200 East
Vernal, UT 84078 * (435) 789-1017

SURVEYED BY	GREG WEIMER, O.R.	12-17-20	SCALE
DRAWN BY	J.U.	04-23-19	1" = 1000'

WELL LOCATION PLAT