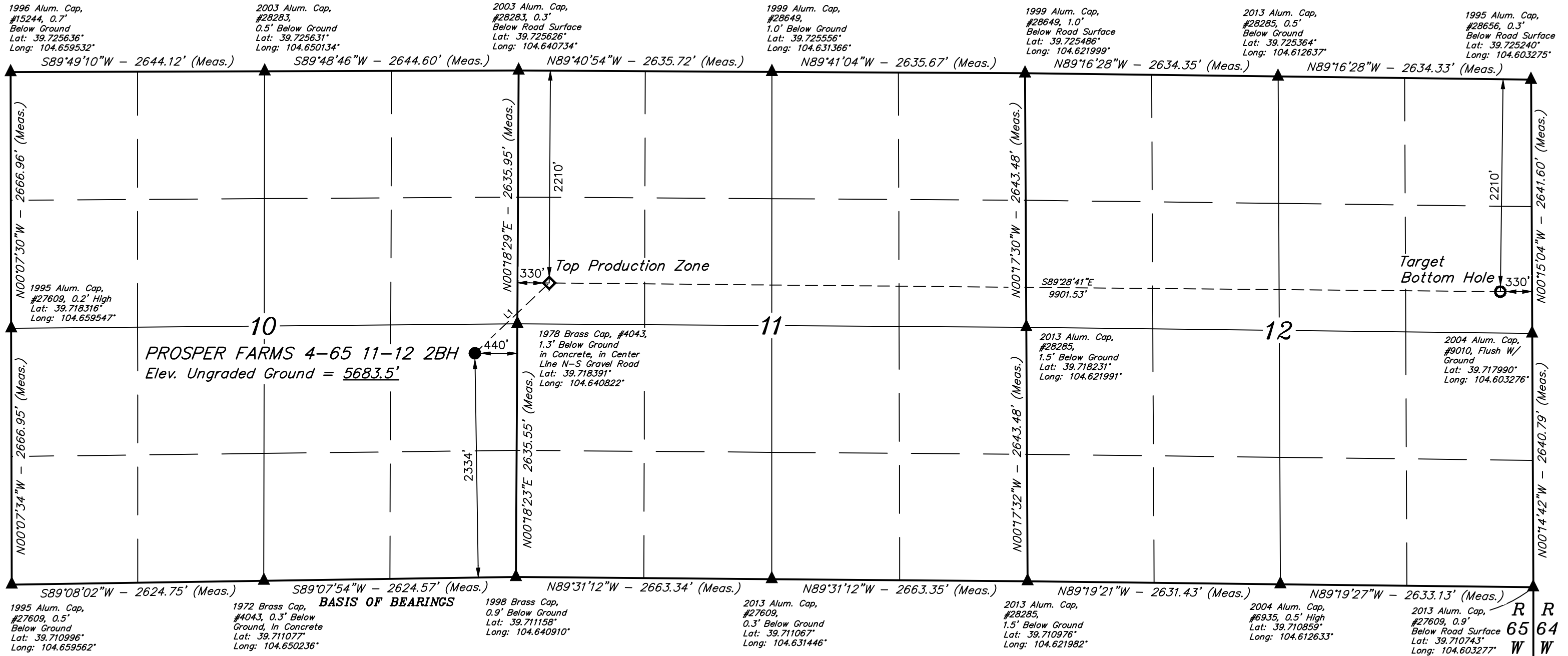


PROSPER FARMS 4-65 11-12 2BH
NE 1/4 SE 1/4, SECTION 10, T4S, R65W, 6th P.M.
ARAPAHOE COUNTY, COLORADO

BASIS OF ELEVATION
OPUS SOLUTION GENERATED NAVD 88



1996 Alum. Cap,
#15244, 0.7'
Below Ground
Lat: 39.725636°
Long: 104.659532°

2003 Alum. Cap,
#28283,
0.5' Below Ground
Lat: 39.725631°
Long: 104.650134°

2003 Alum. Cap,
#28283, 0.3'
Below Road Surface
Lat: 39.725626°
Long: 104.640734°

1999 Alum. Cap,
#28649,
1.0' Below Ground
Lat: 39.725556°
Long: 104.631366°

1999 Alum. Cap,
#28649, 1.0'
Below Road Surface
Lat: 39.725486°
Long: 104.621999°

2013 Alum. Cap,
#28285, 0.5'
Below Ground
Lat: 39.725364°
Long: 104.612637°

1995 Alum. Cap,
#28656, 0.3'
Below Road Surface
Lat: 39.725240°
Long: 104.603275°

1995 Alum. Cap,
#27609, 0.2' High
Lat: 39.718316°
Long: 104.659547°

N00°07'30"W - 2666.96' (Meas.)
N00°07'34"W - 2666.95' (Meas.)

N00°18'29"E - 2635.95' (Meas.)
N00°18'23"E - 2635.55' (Meas.)

N00°17'30"W - 2643.48' (Meas.)
N00°17'32"W - 2643.48' (Meas.)

N00°15'04"W - 2641.60' (Meas.)
N00°14'42"W - 2640.79' (Meas.)

1978 Brass Cap, #4043,
1.3' Below Ground
in Concrete, in Center
Line N-S Gravel Road
Lat: 39.718391°
Long: 104.640822°

2013 Alum. Cap,
#28285,
1.5' Below Ground
Lat: 39.718231°
Long: 104.621991°

2004 Alum. Cap,
#9010, Flush W/
Ground
Lat: 39.717990°
Long: 104.603276°

1995 Alum. Cap,
#27609, 0.5'
Below Ground
Lat: 39.710996°
Long: 104.659562°

1972 Brass Cap,
#4043, 0.3' Below
Ground, in Concrete
Lat: 39.711077°
Long: 104.650236°

1998 Brass Cap,
0.9' Below Ground
Lat: 39.711158°
Long: 104.640910°

2013 Alum. Cap,
#27609,
0.3' Below Ground
Lat: 39.711067°
Long: 104.631446°

2013 Alum. Cap,
#28285,
1.5' Below Ground
Lat: 39.710976°
Long: 104.621982°

2004 Alum. Cap,
#6935, 0.5' High
Lat: 39.710859°
Long: 104.612633°

2013 Alum. Cap,
#27609, 0.9'
Below Road Surface
Lat: 39.710743°
Long: 104.603277°

R R
65 64
W W



NAD 83 (SURFACE LOCATION)	NAD 83 (TOP PRODUCTION ZONE)	NAD 83 (TARGET BOTTOM HOLE)
LATITUDE = 39°43'03.19" (39.717553°)	LATITUDE = 39°43'10.39" (39.719552°)	LATITUDE = 39°43'09.08" (39.719190°)
LONGITUDE = 104°38'32.63" (104.642396°)	LONGITUDE = 104°38'22.69" (104.639635°)	LONGITUDE = 104°36'16.01" (104.604448°)
NAD 27 (SURFACE LOCATION)	NAD 27 (TOP PRODUCTION ZONE)	NAD 27 (TARGET BOTTOM HOLE)
LATITUDE = 39°43'03.24" (39.717566°)	LATITUDE = 39°43'10.43" (39.719565°)	LATITUDE = 39°43'09.13" (39.719203°)
LONGITUDE = 104°38'30.74" (104.641872°)	LONGITUDE = 104°38'20.80" (104.639111°)	LONGITUDE = 104°36'14.13" (104.603926°)
STATE PLANE NAD 83 (CO. CEN.)	STATE PLANE NAD 83 (CO. CEN.)	STATE PLANE NAD 83 (CO. CEN.)
N: 1687386.70' E: 3241250.80'	N: 1688122.12' E: 3242020.60'	N: 1688085.88' E: 3251919.60'
STATE PLANE NAD 27 (CO. CEN.)	STATE PLANE NAD 27 (CO. CEN.)	STATE PLANE NAD 27 (CO. CEN.)
N: 687379.07' E: 2241404.37'	N: 688114.50' E: 2242174.16'	N: 688078.41' E: 2252073.07'