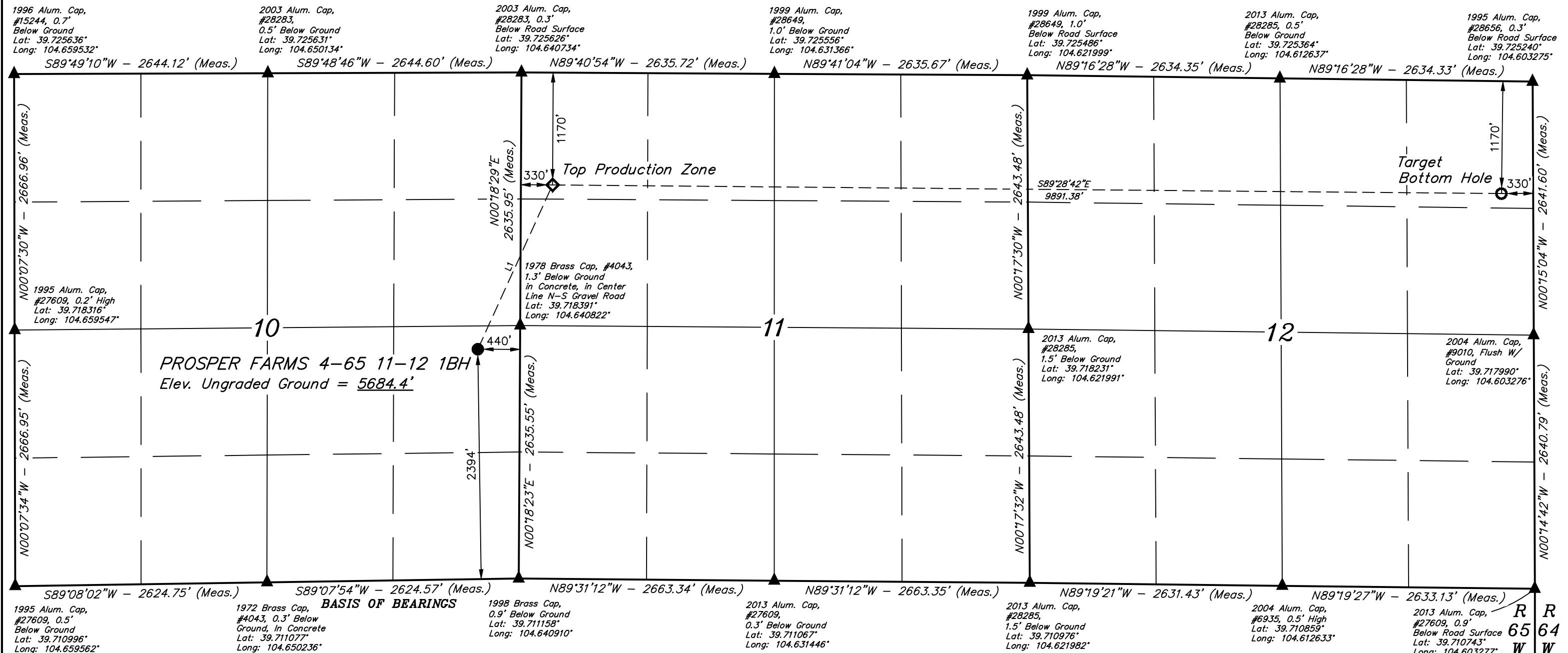


CRESTONE PEAK RESOURCES OPERATING, LLC

BASIS OF ELEVATION
OPUS SOLUTION GENERATED NAVD 88



REGISTERED LAND SURVEYOR
REGISTRATION NO. 28285
STATE OF COLORADO

A horizontal scale bar with alternating black and white segments. It is labeled with '1000'', '500'', and '0'' from left to right.



NAD 83 (SURFACE LOCATION)	NAD 83 (TOP PRODUCTION ZONE)	NAD 83 (TARGET BOTTOM HOLE)
LATITUDE = 39°43'03.78" (39.717717°)	LATITUDE = 39°43'20.66" (39.722406°)	LATITUDE = 39°43'19.36" (39.722044°)
LONGITUDE = 104°38'32.62" (104.642394°)	LONGITUDE = 104°38'22.56" (104.639600°)	LONGITUDE = 104°36'16.01" (104.604448°)
NAD 27 (SURFACE LOCATION)	NAD 27 (TOP PRODUCTION ZONE)	NAD 27 (TARGET BOTTOM HOLE)
LATITUDE = 39°43'03.83" (39.717730°)	LATITUDE = 39°43'20.71" (39.722419°)	LATITUDE = 39°43'19.41" (39.722058°)
LONGITUDE = 104°38'30.73" (104.641870°)	LONGITUDE = 104°38'20.68" (104.639077°)	LONGITUDE = 104°36'14.13" (104.603926°)
STATE PLANE NAD 83 (CO. CEN.)	STATE PLANE NAD 83 (CO. CEN.)	STATE PLANE NAD 83 (CO. CEN.)
N: 1687446.68' E: 3241250.79'	N: 1689161.87' E: 3242020.52'	N: 1689125.73' E: 3251909.38'
STATE PLANE NAD 27 (CO. CEN.)	STATE PLANE NAD 27 (CO. CEN.)	STATE PLANE NAD 27 (CO. CEN.)
N: 687439.05' E: 2241404.37'	N: 689154.22' E: 2242174.06'	N: 689118.23' E: 2252062.84'

PDOP = 1.6

REV: 3 01-20-21 C.IVIE (TPZ & BHL MOVE)



SURVEYED BY	GREG WEIMER, O.R.	12-17-20	SCALE
DRAWN BY	J.U.	04-23-19	1" = 1000'

WELL LOCATION PLAT