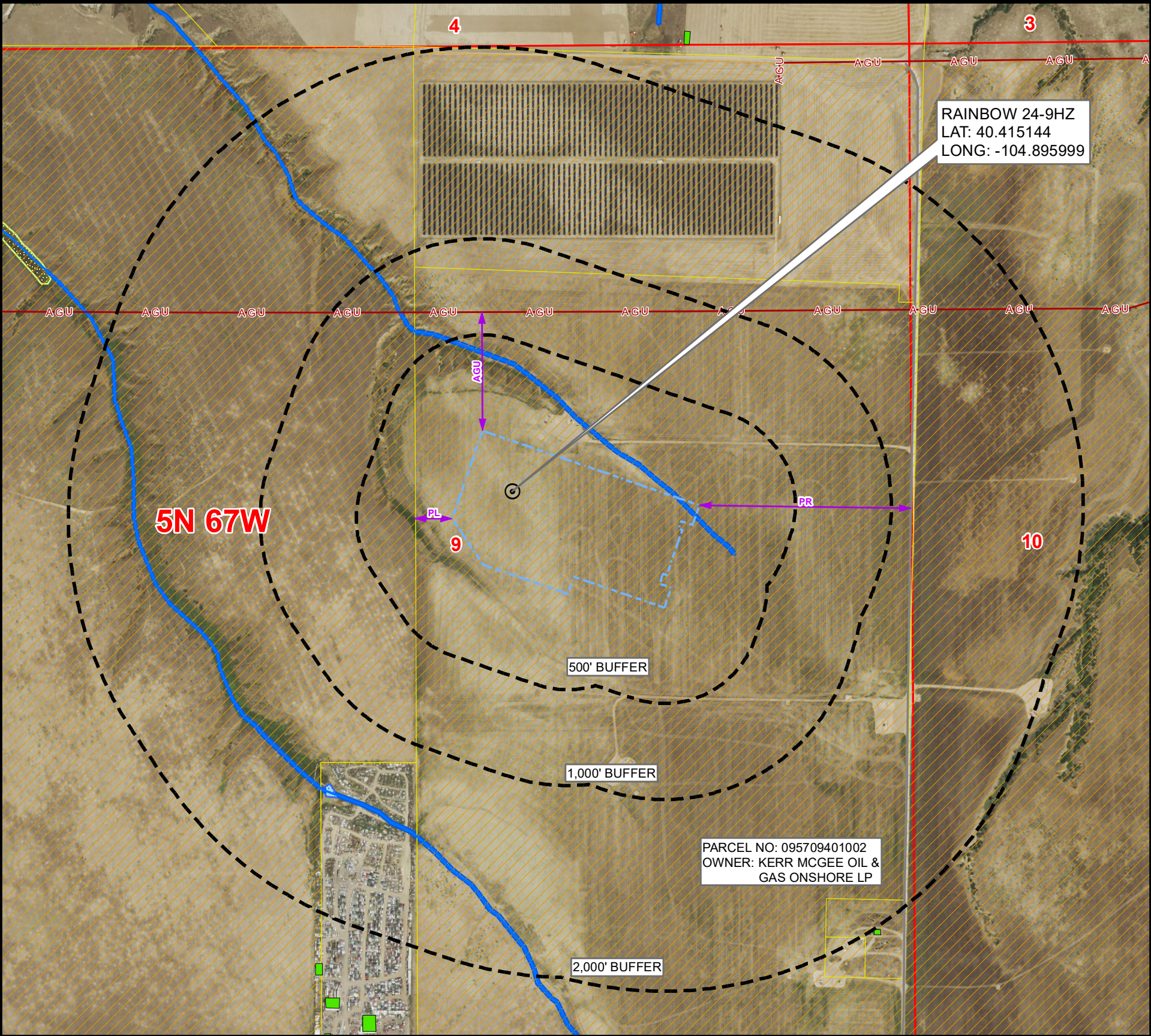


CULTURAL FEATURES MAP
RAINBOW 24-9HZ

SECTION 9, TOWNSHIP 5 NORTH, RANGE 67 WEST, 6TH P.M., GREELEY, COLORADO



| # OF CULTURAL FEATURES WITHIN | 0-500 FEET | 501-1,000 FEET | 1,001-2,000 FEET |
|----------------------------------|------------|----------------|------------------|
| BUILDING UNIT | 0 | 0 | 0 |
| RESIDENTIAL BUILDING UNIT | 0 | 0 | 0 |
| HIGH OCCUPANCY BUILDING UNIT | 0 | 0 | 0 |
| SCHOOL PROPERTY | 0 | 0 | 0 |
| SCHOOL FACILITY | 0 | 0 | 0 |
| DESIGNATED OUTSIDE ACTIVITY AREA | 0 | 0 | 0 |

NOTE:
THIS MAP IS A COMPILATION OF PUBLICLY AVAILABLE DATA. THE ACCURACY AND COMPLETENESS OF SAID DATA HAS NOT BEEN VERIFIED BY 609 CONSULTING, LLC. EXISTING CONDITIONS MAY DIFFER FROM WHAT IS SHOWN.

| MEASURED FROM THE NEAREST | | EDGE OF WORKING PAD |
|---------------------------|---|---------------------|
| B | BUILDING | 2000'+ |
| BU | BUILDING UNIT | 2000'+ |
| RBU | RESIDENTIAL BUILDING UNIT | 2000'+ |
| HOBU | HIGH OCCUPANCY BUILDING UNIT | 2000'+ |
| DOAA | DESIGNATED OUTSIDE ACTIVITY AREA | 2000'+ |
| PR | PUBLIC ROAD | ±1103' E |
| AGU | ABOVE GROUND UTILITY | ±618' N |
| RR | RAILROAD | 2000'+ |
| PL | PROPERTY LINE | ±196' W |
| S | SCHOOL FACILITY | 2000'+ |
| CC | CHILD CARE CENTER | 2000'+ |
| DIC | DISPROPORTIONATELY IMPACTED COMMUNITY BOUNDARY | 2000'+ |
| MB | MUNICIPALITY BOUNDARY | ±0' |
| CB | COUNTY BOUNDARY | 2000'+ |
| SW | SURFACE WATER | ±0' |
| PWS | PUBLIC WATER SYSTEM SUPPLY WELL | 2000'+ |
| HPH | HIGH PRIORITY HABITAT | 2000'+ |
| RHSD | RBU, HOBU, OR SCHOOL FACILITY WITHIN A DI COMMUNITY | 2000'+ |

Legend

- PROPOSED REFERENCE POINT

PROPOSED WORKING PAD SURFACE

BUFFER

BUILDING

NON-RESIDENTIAL BUILDING UNIT

RESIDENTIAL BUILDING UNIT

HEALTH FACILITY

SCHOOL FACILITY

CHILD CARE FACILITY

ABOVE GROUND UTILITY

PUBLIC ROAD

RAILROAD

DITCH/CANAL/DRAINAGE
- RIPARIAN CORRIDOR

RIVERINE CORRIDOR

FRESHWATER EMERGENT WETLAND

FRESHWATER FORESTED/SHRUB WETLAND

OTHER WETLAND

LAKE

FRESHWATER POND

100-YEAR FLOODPLAIN (EFFECTIVE, 2016)

100-YEAR FLOODPLAIN (PRELIMINARY, 2020)

100-YEAR FLOODWAY (PRELIMINARY, 2020)

GUDI SOURCE LOCATIONS (RULE 411)

TYPE III WELL LOCATIONS (RULE 411)
- DISPROPORTIONATELY IMPACTED COMMUNITY

PARCEL BOUNDARY

GREELEY JURISDICTIONAL BOUNDARY

Kerr-McGee Oil &
Gas Onshore LP
1099 18th Street
Denver, Colorado 80202



LOVELAND OFFICE
6706 North Franklin Avenue
Loveland, Colorado 80538
Phone 970-776-4331
SHERIDAN OFFICE
1095 Saberton Avenue
Sheridan, Wyoming 82801
Phone 307-674-0609



Drawn by: BB
Revised:

Date: 1 Mar 2022
Date:

NAD83 CO-Nft
Scale: 1" = 600ft