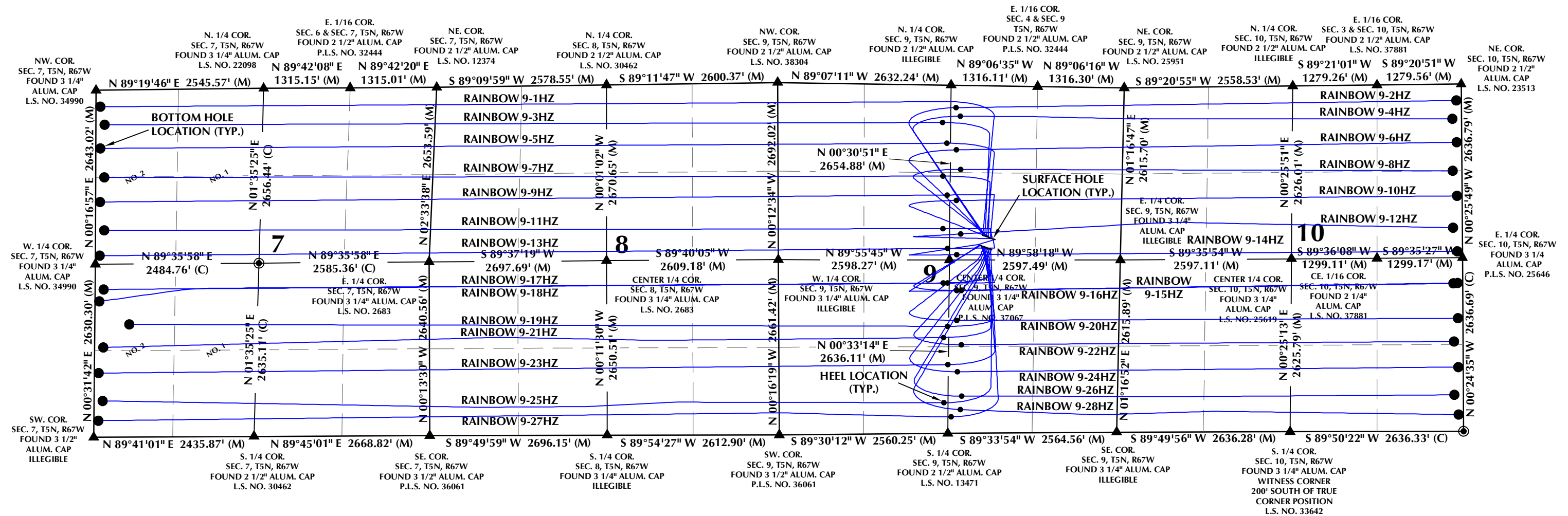
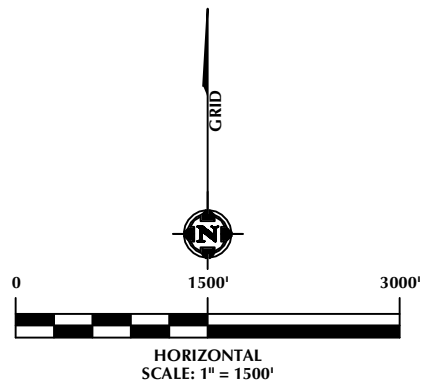


DIRECTIONAL WELL PLAT (COGCC) / MULTI-WELL PLAN (OGED)  
SECTIONS 7, 8, 9 & 10, T5N, R67W



- NOTES:
- ▲ INDICATES SECTION CORNER.
  - INDICATES CALCULATED CORNER.
  - BASIS OF BEARINGS DERIVED FROM COLORADO COORDINATE SYSTEM OF 1983, NORTH ZONE.
  - ALL MEASURED DISTANCES ARE GRID.
  - COMBINED SCALE FACTOR: .99972675 CALCULATED FROM THE E. 1/4 CORNER OF SECTION 9, T5N, R67W.
  - WELL FOOTAGES ARE MEASURED AT RIGHT ANGLES TO THE SECTION LINES.



LOVELAND OFFICE  
6706 North Franklin Avenue  
Loveland, Colorado 80538  
Phone 970-776-4331

SHERIDAN OFFICE  
1095 Saberton Avenue  
Sheridan, Wyoming 82801  
Phone 307-674-0609

**Kerr-McGee Oil &  
Gas Onshore LP**  
1099 18th Street  
Denver, Colorado 80202

WELL PAD - RAINBOW 24-9HZ

DIRECTIONAL WELL PLAT (COGCC) / MULTI-WELL PLAN (OGED)  
RAINBOW 9-1HZ,  
RAINBOW 9-2HZ, RAINBOW 9-3HZ, RAINBOW 9-4HZ,  
RAINBOW 9-5HZ, RAINBOW 9-6HZ, RAINBOW 9-7HZ,  
RAINBOW 9-8HZ, RAINBOW 9-9HZ, RAINBOW 9-10HZ,  
RAINBOW 9-11HZ, RAINBOW 9-12HZ, RAINBOW 9-13HZ,  
RAINBOW 9-14HZ, RAINBOW 9-15HZ, RAINBOW 9-16HZ,  
RAINBOW 9-17HZ, RAINBOW 9-18HZ, RAINBOW 9-19HZ,  
RAINBOW 9-20HZ, RAINBOW 9-21HZ, RAINBOW 9-22HZ,  
RAINBOW 9-23HZ, RAINBOW 9-24HZ, RAINBOW 9-25HZ,  
RAINBOW 9-26HZ, RAINBOW 9-27HZ & RAINBOW 9-28HZ  
LOCATED IN SECTIONS 7, 8, 9 & 10, T5N, R67W, 6TH P.M.  
WELD COUNTY, COLORADO

DRAFTED BY:	SJM	CHECKED BY:	RKF	SHEET NO:
DATE DRAFTED:	3/28/22	DATE SURVEYED:	2/21/22	1A
REVISED:		FILE NAME:	18-160	1A OF 1

DIRECTIONAL WELL PLAT (COGCC) / MULTI-WELL PLAN (OGED)  
SECTIONS 7, 8, 9 & 10, T5N, R67W

WELL NOTES:

RAINBOW 9-1HZ  
SURFACE HOLE LOCATION: 2273' FNL, 2096' FEL (SEC. 9)  
HEEL LOCATION: 251' FNL, 2571' FWL (SEC. 9)  
BOTTOM HOLE LOCATION: 251' FNL, 70' FWL (SEC. 7)

RAINBOW 9-2HZ  
SURFACE HOLE LOCATION: 2278' FNL, 2081' FEL (SEC. 9)  
HEEL LOCATION: 340' FNL, 2542' FEL (SEC. 9)  
BOTTOM HOLE LOCATION: 249' FNL, 70' FEL (SEC. 10)

RAINBOW 9-3HZ  
SURFACE HOLE LOCATION: 2282' FNL, 2067' FEL (SEC. 9)  
HEEL LOCATION: 569' FNL, 2505' FWL (SEC. 9)  
BOTTOM HOLE LOCATION: 525' FNL, 135' FWL (SEC. 7)

RAINBOW 9-4HZ  
SURFACE HOLE LOCATION: 2287' FNL, 2053' FEL (SEC. 9)  
HEEL LOCATION: 469' FNL, 2478' FEL (SEC. 9)  
BOTTOM HOLE LOCATION: 525' FNL, 135' FEL (SEC. 10)

RAINBOW 9-5HZ  
SURFACE HOLE LOCATION: 2292' FNL, 2038' FEL (SEC. 9)  
HEEL LOCATION: 884' FNL, 2571' FWL (SEC. 9)  
BOTTOM HOLE LOCATION: 884' FNL, 70' FWL (SEC. 7)

RAINBOW 9-6HZ  
SURFACE HOLE LOCATION: 2296' FNL, 2024' FEL (SEC. 9)  
HEEL LOCATION: 981' FNL, 2526' FEL (SEC. 9)  
BOTTOM HOLE LOCATION: 884' FNL, 70' FEL (SEC. 10)

RAINBOW 9-7HZ  
SURFACE HOLE LOCATION: 2301' FNL, 2010' FEL (SEC. 9)  
HEEL LOCATION: 1384' FNL, 2507' FWL (SEC. 9)  
BOTTOM HOLE LOCATION: 1327' FNL, 135' FWL (SEC. 7)

RAINBOW 9-8HZ  
SURFACE HOLE LOCATION: 2305' FNL, 1996' FEL (SEC. 9)  
HEEL LOCATION: 1277' FNL, 2455' FEL (SEC. 9)  
BOTTOM HOLE LOCATION: 1316' FNL, 135' FEL (SEC. 10)

RAINBOW 9-9HZ  
SURFACE HOLE LOCATION: 2310' FNL, 1981' FEL (SEC. 9)  
HEEL LOCATION: 1670' FNL, 2571' FWL (SEC. 9)  
BOTTOM HOLE LOCATION: 1699' FNL, 70' FWL (SEC. 7)

RAINBOW 9-10HZ  
SURFACE HOLE LOCATION: 2315' FNL, 1967' FEL (SEC. 9)  
HEEL LOCATION: 1750' FNL, 2507' FEL (SEC. 9)  
BOTTOM HOLE LOCATION: 1699' FNL, 70' FEL (SEC. 10)

RAINBOW 9-11HZ  
SURFACE HOLE LOCATION: 2319' FNL, 1953' FEL (SEC. 9)  
HEEL LOCATION: 2182' FNL, 2506' FWL (SEC. 9)  
BOTTOM HOLE LOCATION: 2133' FNL, 135' FWL (SEC. 7)

RAINBOW 9-12HZ  
SURFACE HOLE LOCATION: 2324' FNL, 1938' FEL (SEC. 9)  
HEEL LOCATION: 2259' FNL, 2429' FEL (SEC. 9)  
BOTTOM HOLE LOCATION: 2183' FNL, 135' FEL (SEC. 10)

RAINBOW 9-13HZ  
SURFACE HOLE LOCATION: 2329' FNL, 1924' FEL (SEC. 9)  
HEEL LOCATION: 2482' FNL, 2571' FWL (SEC. 9)  
BOTTOM HOLE LOCATION: 2517' FNL, 70' FWL (SEC. 7)

RAINBOW 9-14HZ  
SURFACE HOLE LOCATION: 2333' FNL, 1910' FEL (SEC. 9)  
HEEL LOCATION: 2575' FNL, 2483' FEL (SEC. 9)  
BOTTOM HOLE LOCATION: 2541' FNL, 70' FEL (SEC. 10)

RAINBOW 9-15HZ  
SURFACE HOLE LOCATION: 2425' FNL, 2144' FEL (SEC. 9)  
HEEL LOCATION: 2167' FSL, 2471' FEL (SEC. 9)  
BOTTOM HOLE LOCATION: 2249' FSL, 70' FEL (SEC. 10)

RAINBOW 9-16HZ  
SURFACE HOLE LOCATION: 2430' FNL, 2130' FEL (SEC. 9)  
HEEL LOCATION: 2170' FSL, 2405' FEL (SEC. 9)  
BOTTOM HOLE LOCATION: 2243' FSL, 135' FEL (SEC. 10)

RAINBOW 9-17HZ  
SURFACE HOLE LOCATION: 2434' FNL, 2116' FEL (SEC. 9)  
HEEL LOCATION: 2283' FSL, 2506' FWL (SEC. 9)  
BOTTOM HOLE LOCATION: 2244' FSL, 135' FWL (SEC. 7)

RAINBOW 9-18HZ  
SURFACE HOLE LOCATION: 2439' FNL, 2101' FEL (SEC. 9)  
HEEL LOCATION: 2283' FSL, 2571' FWL (SEC. 9)  
BOTTOM HOLE LOCATION: 2062' FSL, 71' FWL (SEC. 7)

RAINBOW 9-19HZ  
SURFACE HOLE LOCATION: 2444' FNL, 2087' FEL (SEC. 9)  
HEEL LOCATION: 1626' FSL, 2569' FWL (SEC. 9)  
BOTTOM HOLE LOCATION: 1711' FSL, 530' FWL (SEC. 7)

RAINBOW 9-20HZ  
SURFACE HOLE LOCATION: 2448' FNL, 2073' FEL (SEC. 9)  
HEEL LOCATION: 1714' FSL, 2460' FEL (SEC. 9)  
BOTTOM HOLE LOCATION: 1713' FSL, 70' FEL (SEC. 10)

RAINBOW 9-21HZ  
SURFACE HOLE LOCATION: 2453' FNL, 2058' FEL (SEC. 9)  
HEEL LOCATION: 1456' FSL, 2508' FWL (SEC. 9)  
BOTTOM HOLE LOCATION: 1362' FSL, 135' FWL (SEC. 7)

RAINBOW 9-22HZ  
SURFACE HOLE LOCATION: 2458' FNL, 2044' FEL (SEC. 9)  
HEEL LOCATION: 1345' FSL, 2385' FEL (SEC. 9)  
BOTTOM HOLE LOCATION: 1361' FSL, 134' FEL (SEC. 10)

RAINBOW 9-23HZ  
SURFACE HOLE LOCATION: 2462' FNL, 2030' FEL (SEC. 9)  
HEEL LOCATION: 1043' FSL, 2570' FWL (SEC. 9)  
BOTTOM HOLE LOCATION: 973' FSL, 70' FWL (SEC. 7)

RAINBOW 9-24HZ  
SURFACE HOLE LOCATION: 2467' FNL, 2016' FEL (SEC. 9)  
HEEL LOCATION: 934' FSL, 2437' FEL (SEC. 9)  
BOTTOM HOLE LOCATION: 972' FSL, 70' FEL (SEC. 10)

RAINBOW 9-25HZ  
SURFACE HOLE LOCATION: 2472' FNL, 2001' FEL (SEC. 9)  
HEEL LOCATION: 465' FSL, 2506' FWL (SEC. 9)  
BOTTOM HOLE LOCATION: 551' FSL, 135' FWL (SEC. 7)

RAINBOW 9-26HZ  
SURFACE HOLE LOCATION: 2476' FNL, 1987' FEL (SEC. 9)  
HEEL LOCATION: 561' FSL, 2363' FEL (SEC. 9)  
BOTTOM HOLE LOCATION: 550' FSL, 135' FEL (SEC. 10)

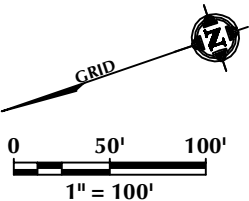
RAINBOW 9-27HZ  
SURFACE HOLE LOCATION: 2481' FNL, 1973' FEL (SEC. 9)  
HEEL LOCATION: 250' FSL, 2515' FEL (SEC. 9)  
BOTTOM HOLE LOCATION: 251' FSL, 70' FWL (SEC. 7)

RAINBOW 9-28HZ  
SURFACE HOLE LOCATION: 2485' FNL, 1958' FEL (SEC. 9)  
HEEL LOCATION: 357' FSL, 2377' FEL (SEC. 9)  
BOTTOM HOLE LOCATION: 250' FSL, 70' FEL (SEC. 10)

WELL HEAD SPACING DETAIL

RAINBOW 9-14HZ	15'	RAINBOW 9-28HZ
RAINBOW 9-13HZ	15'	RAINBOW 9-27HZ
RAINBOW 9-12HZ	15'	RAINBOW 9-26HZ
RAINBOW 9-11HZ	15'	RAINBOW 9-25HZ
RAINBOW 9-10HZ	15'	RAINBOW 9-24HZ
RAINBOW 9-9HZ	15'	RAINBOW 9-23HZ
RAINBOW 9-8HZ	15'	RAINBOW 9-22HZ
RAINBOW 9-7HZ	15'	RAINBOW 9-21HZ
RAINBOW 9-6HZ	15'	RAINBOW 9-20HZ
RAINBOW 9-5HZ	15'	RAINBOW 9-19HZ
RAINBOW 9-4HZ	15'	RAINBOW 9-18HZ
RAINBOW 9-3HZ	15'	RAINBOW 9-17HZ
RAINBOW 9-2HZ	15'	RAINBOW 9-16HZ
RAINBOW 9-1HZ	15'	RAINBOW 9-15HZ

160'



LOVELAND OFFICE  
6706 North Franklin Avenue  
Loveland, Colorado 80538  
Phone 970-776-4331

SHERIDAN OFFICE  
1095 Saberton Avenue  
Sheridan, Wyoming 82801  
Phone 307-674-0609

**Kerr-McGee Oil &  
Gas Onshore LP**  
1099 18th Street  
Denver, Colorado 80202

WELL PAD - RAINBOW 24-9HZ

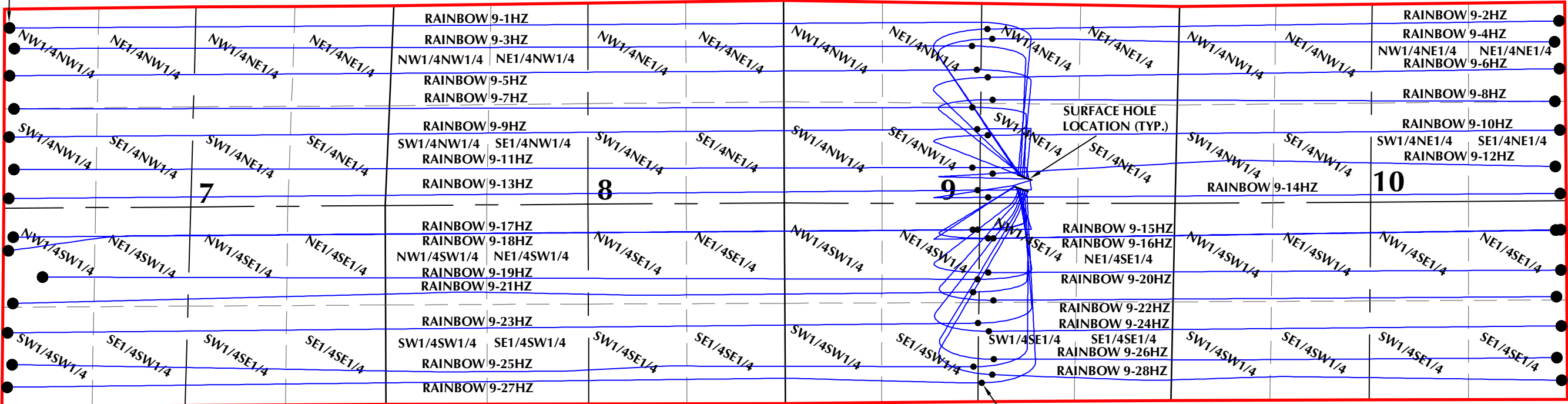
DIRECTIONAL WELL PLAT (COGCC) / MULTI-WELL PLAN (OGED)  
RAINBOW 9-1HZ,  
RAINBOW 9-2HZ, RAINBOW 9-3HZ, RAINBOW 9-4HZ,  
RAINBOW 9-5HZ, RAINBOW 9-6HZ, RAINBOW 9-7HZ,  
RAINBOW 9-8HZ, RAINBOW 9-9HZ, RAINBOW 9-10HZ,  
RAINBOW 9-11HZ, RAINBOW 9-12HZ, RAINBOW 9-13HZ,  
RAINBOW 9-14HZ, RAINBOW 9-15HZ, RAINBOW 9-16HZ,  
RAINBOW 9-17HZ, RAINBOW 9-18HZ, RAINBOW 9-19HZ,  
RAINBOW 9-20HZ, RAINBOW 9-21HZ, RAINBOW 9-22HZ,  
RAINBOW 9-23HZ, RAINBOW 9-24HZ, RAINBOW 9-25HZ,  
RAINBOW 9-26HZ, RAINBOW 9-27HZ & RAINBOW 9-28HZ  
LOCATED IN SECTIONS 7, 8, 9 & 10, T5N, R67W, 6TH P.M.  
WELD COUNTY, COLORADO

DRAFTED BY:	SJM	CHECKED BY:	RKF
DATE DRAFTED:	3/28/22	DATE SURVEYED:	2/21/22
REVISED:		FILE NAME:	18-160

SHEET NO:  
**1B**  
1B OF 1

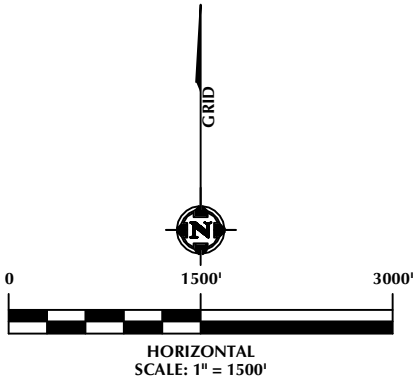
DIRECTIONAL WELL PLAT (COGCC) / MULTI-WELL PLAN (OGED)  
SECTIONS 7, 8, 9 & 10, T5N, R67W

BOTTOM HOLE  
LOCATION (TYP.)



HEEL LOCATION  
(TYP.)

- LEGEND:
- DSU BOUNDARY
  - WELLBORE TRAJECTORY
  - HEEL LOCATION
  - BOTTOM HOLE LOCATION



LOVELAND OFFICE  
6706 North Franklin Avenue  
Loveland, Colorado 80538  
Phone 970-776-4331

SHERIDAN OFFICE  
1095 Saberton Avenue  
Sheridan, Wyoming 82801  
Phone 307-674-0609

**Kerr-McGee Oil &  
Gas Onshore LP**  
1099 18th Street  
Denver, Colorado 80202

WELL PAD - RAINBOW 24-9HZ

DIRECTIONAL WELL PLAT (COGCC) / MULTI-WELL PLAN (OGED)  
RAINBOW 9-1HZ,  
RAINBOW 9-2HZ, RAINBOW 9-3HZ, RAINBOW 9-4HZ,  
RAINBOW 9-5HZ, RAINBOW 9-6HZ, RAINBOW 9-7HZ,  
RAINBOW 9-8HZ, RAINBOW 9-9HZ, RAINBOW 9-10HZ,  
RAINBOW 9-11HZ, RAINBOW 9-12HZ, RAINBOW 9-13HZ,  
RAINBOW 9-14HZ, RAINBOW 9-15HZ, RAINBOW 9-16HZ,  
RAINBOW 9-17HZ, RAINBOW 9-18HZ, RAINBOW 9-19HZ,  
RAINBOW 9-20HZ, RAINBOW 9-21HZ, RAINBOW 9-22HZ,  
RAINBOW 9-23HZ, RAINBOW 9-24HZ, RAINBOW 9-25HZ,  
RAINBOW 9-26HZ, RAINBOW 9-27HZ & RAINBOW 9-28HZ  
LOCATED IN SECTIONS 7, 8, 9 & 10, T5N, R67W, 6TH P.M.  
WELD COUNTY, COLORADO

DRAFTED BY:	SJM	CHECKED BY:	RKF	SHEET NO:
DATE DRAFTED:	3/28/22	DATE SURVEYED:	2/21/22	1C
REVISED:		FILE NAME:	18-160	1C OF 1