



Kerr-McGee Oil & Gas Onshore LP

Community Consultation Plan

North Core OGD

Greeley, Colorado

May 2022

DESCRIPTION OF AREA (Greeley, CO)



ADJACENT LAND USES

Pad or Facility	# RBU's within 2000'	Closest RBU to Working Pad Surface (WPS)	# RBU's within 1,000'
Blue Chip 6-22HZ	0	+2,000'	0
Rainbow 24-9HZ	0	+2,000'	0

BLOCK GROUP DEMOGRAPHICS

Pad or Facility	Located within 2000' of DIC*	Block ID	Linguistically Isolated Population %	Minority Population %	Median Household Income **
Blue Chip 6-22HZ	No	081230021014	1%	26.0%	\$103,750
Rainbow 24-9HZ	No	081230022091	2%	11%	\$108,864

**Disproportionally Impacted Community

** Over past 12 months

PLANNED COMMUNITY CONSULTATION

Stakeholder Best Management Practices (BMP's):

- The Stakeholder Relations team is a dedicated resource for stakeholders, and we are available during daytime and evening hours. We strive to respond to within one business day.
- Proactive community consultation includes sharing information, listening to stakeholders, and considering their input and concerns related to all aspects of our operations including public health, safety, and welfare
- We offer multiple ways for stakeholders to communicate with us including phone, mail, email, text, in person, and our stakeholder website. We will adapt our outreach to meet each stakeholder's preference

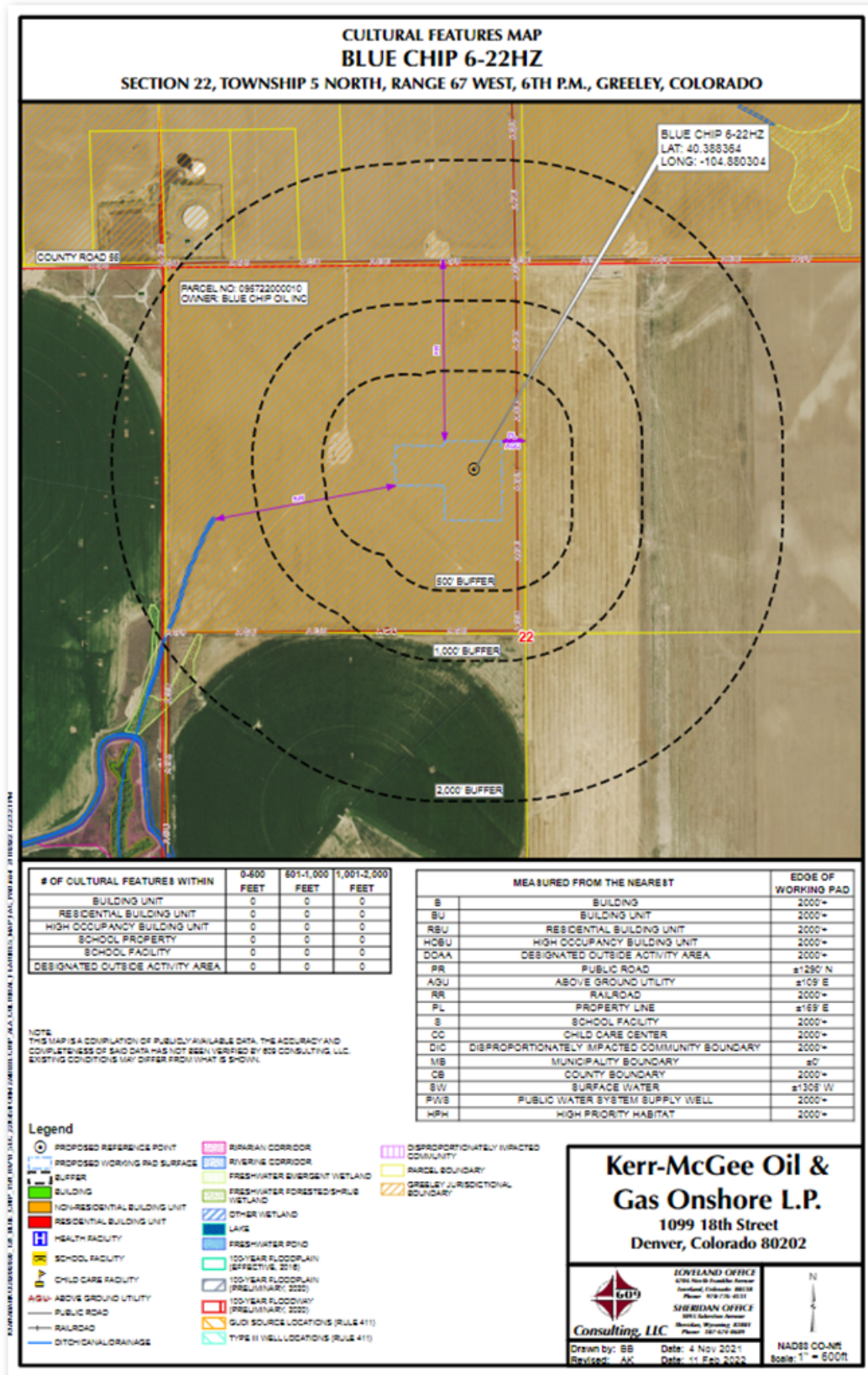
Planned Community Consultation Throughout Permitting:

- We will proactively engage with owners and tenants within 2,000 feet of each of the Working Pad Surfaces (WPS). The OGD area is not linguistically isolated; however, we will include an offer for interpretation services
- We offer a variety of engagement opportunities such as community meeting, door-to-door, small group meetings, phone calls, and emails upon request.
- We will send the completeness letter to owners and tenants within 2,000 feet of the WPS, which will include the following information:
 - Proposed location description and map, including legal description
 - The number and orientation of wells, types of equipment, and infrastructure related to anticipated operations
 - A description, proposed timeline, and expected duration of planned operations including construction, drilling, completions, production, and reclamation
 - The proposed haul routes and traffic volume associated with each phase of operations
 - A description of each stage of operation along with a description of our BMPs to mitigate potential impacts including noise, light, odor, dust, traffic, and visual
 - Contact information for our Stakeholder Relations team

Planned Community Consultation After Permit Approval:

- Send all required local and COGCC notices
- Provide frequent project updates and post notices and hearing information on the OxyColoradoStakeholder.com website
- Throughout the entire life of the wells, our Stakeholder Relations team is available via:
 - Phone: 1.866.248.9577
 - Email: ColoradoStakeholder@oxy.com
 - Website: OxyColoradoStakeholder.com
 - Our 24-hour Integrated Operations Center: 970.515.1500

BLUE CHIP 6-22HZ CULTURAL FEATURES MAP



RAINBOW 24-9HZ CULTURAL FEATURES MAP

