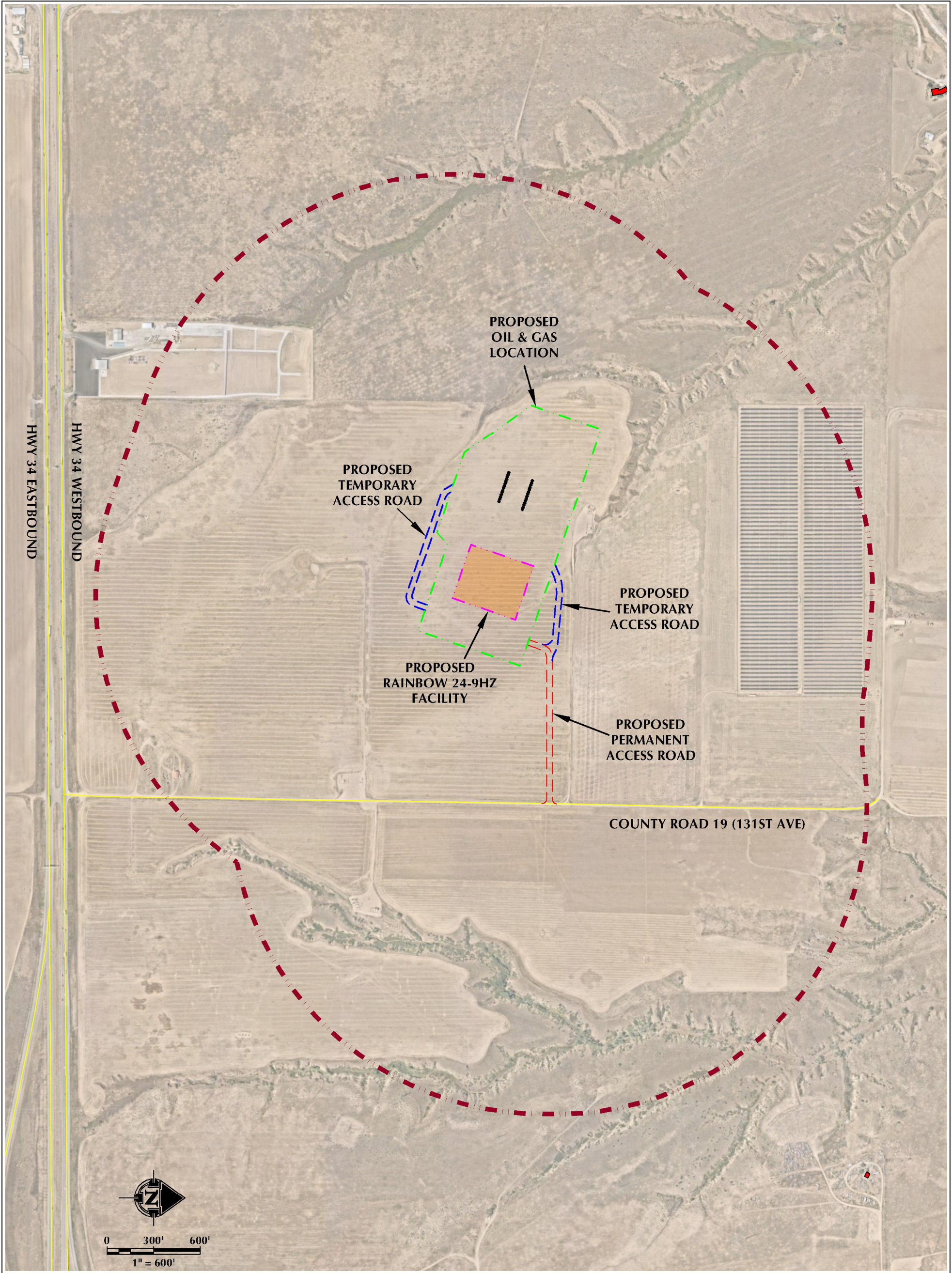


RAINBOW 24-9HZ ACCESS MAP

E1/2 SECTION 9, TOWNSHIP 5 NORTH, RANGE 67 WEST, 6TH P.M., GREELEY, COLORADO



LEGEND

- PROPOSED WELL
- PROPOSED PERMANENT ACCESS ROAD
- PROPOSED TEMPORARY ACCESS ROAD
- PUBLIC ROAD
- PROPOSED OIL & GAS LOCATION
- 2000' ACCESS BUFFER
- RESIDENTIAL BUILDING UNIT
- NON-RESIDENTIAL BUILDING UNIT
- PROPOSED FACILITY

**INTERSECTION OF
ACCESS ROAD AND CR 19 (131ST AVE)**

LATITUDE: 40.415405°

LONGITUDE: -104.888519°



609 CONSULTING, LLC
LOVELAND OFFICE
6706 North Franklin Avenue
Loveland, Colorado 80538
Phone: 970-776-4331
SHERIDAN OFFICE
1095 Saberton Avenue
Sheridan, Wyoming 82801
Phone: 307-674-6069

DATE SURVEYED: 2/21/22
DATE: 3/1/22
DRAFTER: GLK
REVISED:

DATA SOURCES & NOTES:
- AERIAL COURTESY OF NEARMAP US, INC.

PREPARED FOR:
Kerr-McGee Oil & Gas Onshore LP

K:\AN\ADAR\0218\2018_160_BROCKE_BROWN_&_RAINBOW_TSH_R67W_SEC_9\DWG\RAINBOW_28_WELL_OPTION_FINAL.DWG, 3/1/2022 11:02:23 AM, aspen