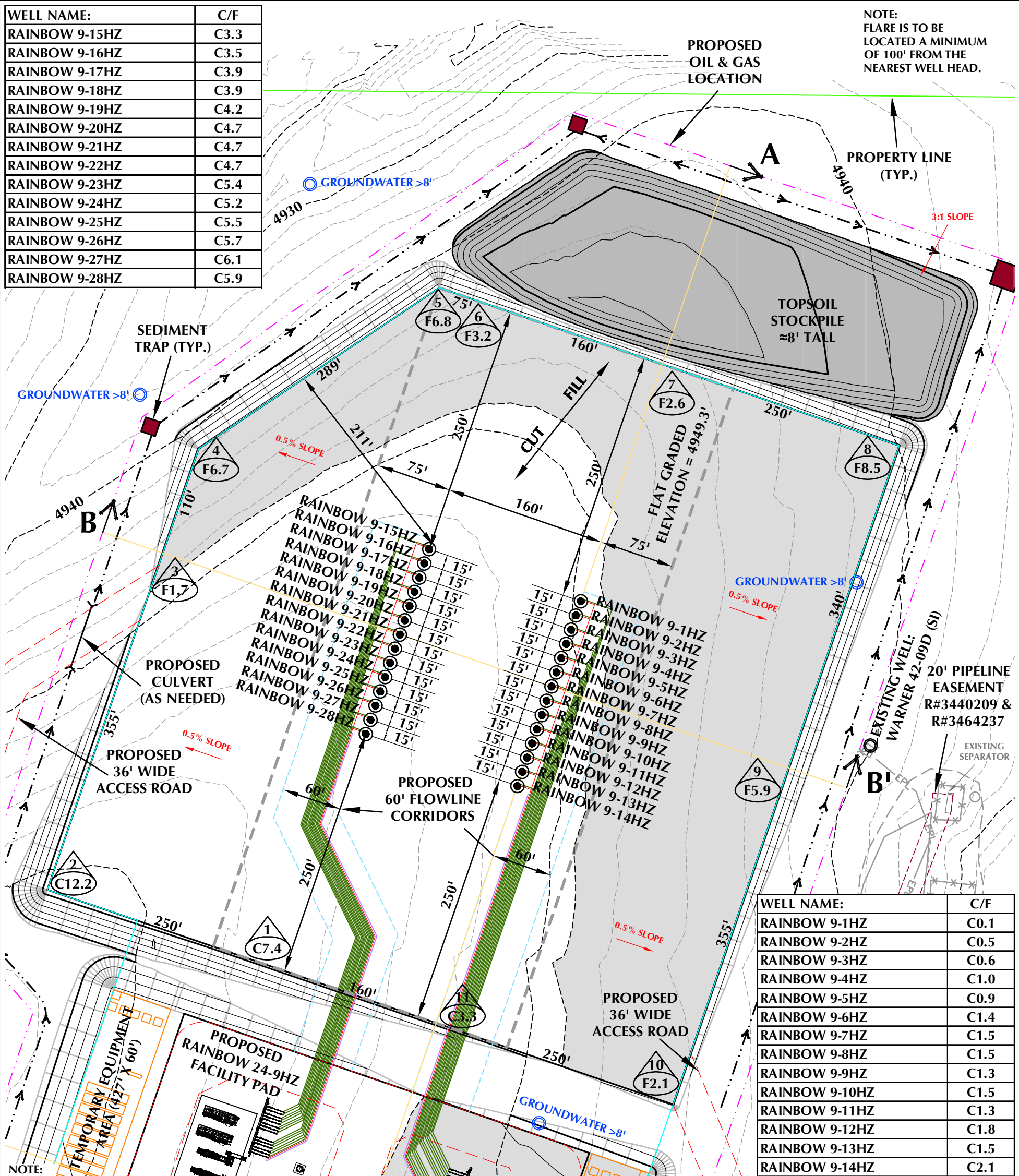


WELL NAME:	C/F
RAINBOW 9-15HZ	C3.3
RAINBOW 9-16HZ	C3.5
RAINBOW 9-17HZ	C3.9
RAINBOW 9-18HZ	C3.9
RAINBOW 9-19HZ	C4.2
RAINBOW 9-20HZ	C4.7
RAINBOW 9-21HZ	C4.7
RAINBOW 9-22HZ	C4.7
RAINBOW 9-23HZ	C5.4
RAINBOW 9-24HZ	C5.2
RAINBOW 9-25HZ	C5.5
RAINBOW 9-26HZ	C5.7
RAINBOW 9-27HZ	C6.1
RAINBOW 9-28HZ	C5.9

**NOTE:
FLARE IS TO BE
LOCATED A MINIMUM
OF 100' FROM THE
NEAREST WELL HEAD.**



- | | | |
|---|----------------|------|
| NOTE: | RAINBOW 9-14HZ | C2.1 |
| <ol style="list-style-type: none"> 1. PIPELINE AND UTILITY CORRIDORS ARE PLANNED AND DETERMINED BY THIRD PARTY COMPANIES. SPECIFIC PIPELINE AND UTILITY CORRIDOR LOCATIONS WILL BE DECIDED BY THOSE THIRD PARTY COMPANIES CLOSER TO THE START DATE OF OPERATIONS BASED ON CONTRACT AND RIGHT-OF-WAY NEGOTIATIONS. 2. EXISTING UTILITIES DISPLAYED ON THE GRADING PLAN ARE FOR REFERENCE PURPOSES ONLY. PRIOR TO CONSTRUCTION OR EARTHWORK, CONTRACTOR WILL BE RESPONSIBLE TO CALL FOR LOCATES: (800) 922-1987 3. DIVERSION DITCH AND/OR BERM TO BE CONSTRUCTED AROUND THE ENTIRE PAD LOCATION. BERM SECTIONS TO BE COMPACTED IN ACCORDANCE WITH STANDARD CONSTRUCTION PRACTICES. 4. CENTER OF WELL PAD REFERENCED BELOW CORRESPONDS TO THE SURFACE LOCATION OF THE RAINBOW 9-7HZ WELL. 5. FLAT GRADED AREA TO BE RECLAIMED DURING INTERIM RECLAMATION. | | |

WELL PAD - RAINBOW 24-9HZ CONSTRUCTION LAYOUT DRAWING - PLAN VIEW

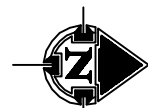
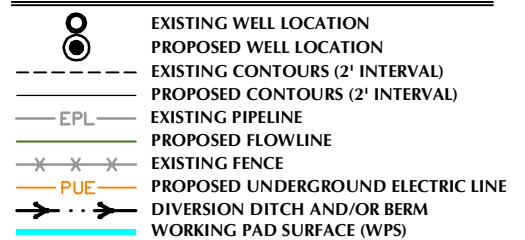
WELL PAD QUANTITIES AND DESIGN PARAMETERS

EXISTING GRADE @ CENTER OF WELL PAD = 4950.8'
FINISHED GRADE ELEVATION = 4949.3'
CUT SLOPES = 3:1
FILL SLOPES = 3:1
SHRINKAGE FACTOR = 1.10
SWELL FACTOR = 1.00
GRADED WELL PAD SURFACE AREA = 10.07 ACRES
TOTAL WELL PAD AREA = 11.16 ACRES
PROPOSED OIL & GAS LOCATION = 26.26 ACRES

WELL PAD QUANTITIES

TOTAL CUT FOR WELL PAD = 34,614 C.Y.
TOTAL FILL FOR WELL PAD = 34,614 C.Y.
TOPSOIL @ 12" DEPTH = 17,999 C.Y.
IMPORT MATERIAL = 0 C.Y.
TOTAL DISTURBANCE AREA
OIL & GAS LOCATION = 26.26 ACRES
WORKING PAD SURFACE = 16.17 ACRES
ACCESS ROADS = 3.57 ACRES
PIPELINE/UTILITY CORRIDOR = SEE NOTE 1

WELL PAD LEGEND



2' CONTOURS
HORIZONTAL 0 50' 100' 1" = 100'

SCALE: 1"=100'	DATE: 1/4/22	SHEET NO:
REVISED:	HJL 5/13/22	1 1 OF 1

WELL PAD - RAINBOW 24-9HZ

CONSTRUCTION LAYOUT DRAWING - PLAN VIEW

RAINBOW 9-1HZ, RAINBOW 9-2HZ, RAINBOW 9-3HZ, RAINBOW 9-4HZ,
RAINBOW 9-5HZ, RAINBOW 9-6HZ, RAINBOW 9-7HZ, RAINBOW 9-8HZ,
RAINBOW 9-9HZ, RAINBOW 9-10HZ, RAINBOW 9-11HZ, RAINBOW 9-12HZ,
RAINBOW 9-13HZ, RAINBOW 9-14HZ, RAINBOW 9-15HZ, RAINBOW 9-16HZ,
RAINBOW 9-17HZ, RAINBOW 9-18HZ, RAINBOW 9-19HZ, RAINBOW 9-20HZ,
RAINBOW 9-21HZ, RAINBOW 9-22HZ, RAINBOW 9-23HZ, RAINBOW 9-24HZ,
RAINBOW 9-25HZ, RAINBOW 9-26HZ, RAINBOW 9-27HZ & RAINBOW 9-28HZ

LOCATED IN SECTION 9, T5N, R67W, 6TH P.M.

GREELEY, COLORADO

FACILITY REVISION: X00476-STOR-PP-2020 Rev M

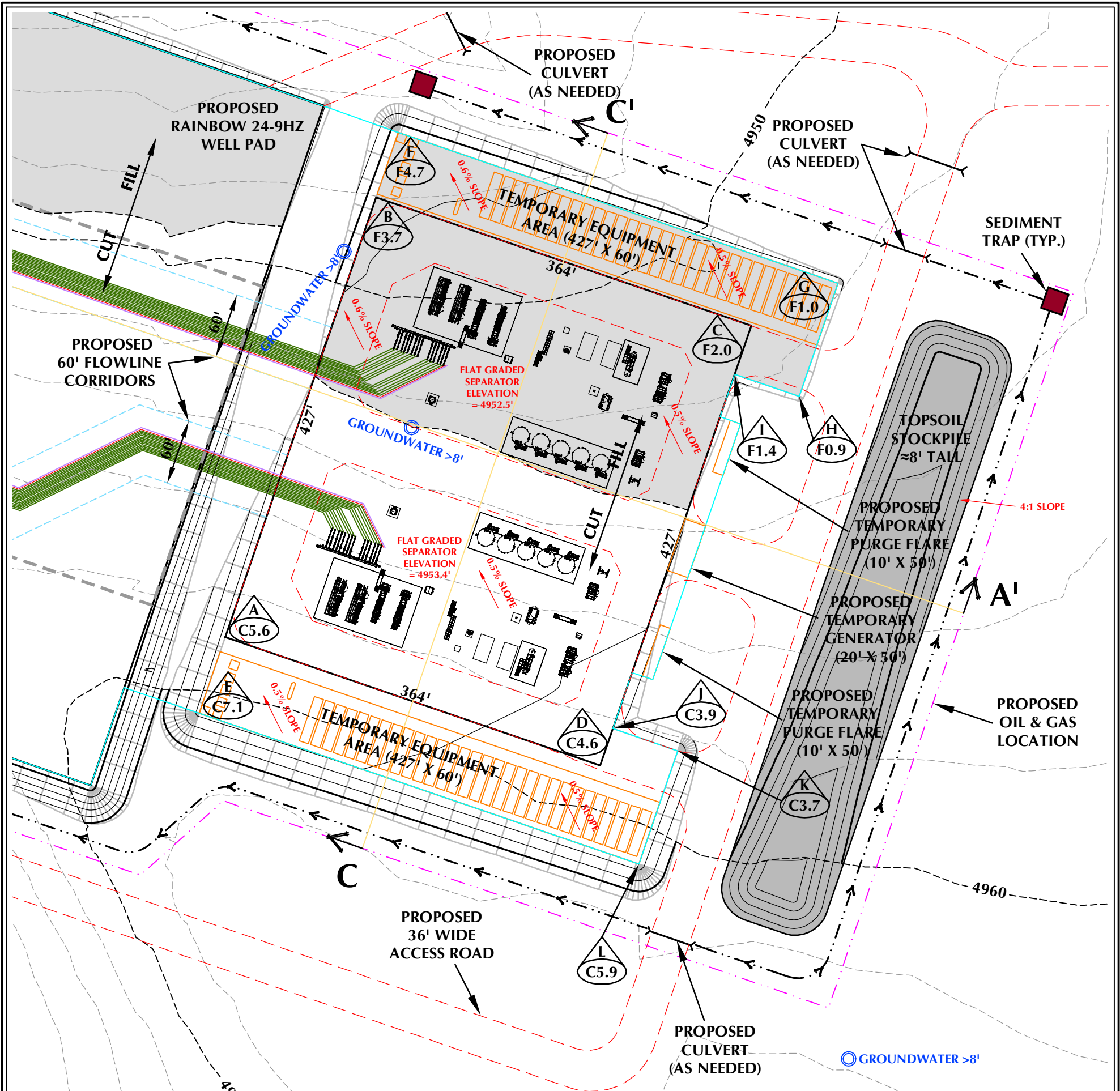
**Kerr-McGee Oil &
Gas Onshore LP**
1099 18th Street
Denver, Colorado 80202



LOVELAND OFFICE
6706 North Franklin Avenue
Loveland, Colorado 80538
Phone 970-776-4331

SHERIDAN OFFICE
1095 Saberton Avenue
Sheridan, Wyoming 82801
Phone 307-674-0609

CONSULTING, LLC



- NOTE:
1. PIPELINE AND UTILITY CORRIDORS ARE PLANNED AND DETERMINED BY THIRD PARTY COMPANIES. SPECIFIC PIPELINE AND UTILITY CORRIDOR LOCATIONS WILL BE DECIDED BY THOSE THIRD PARTY COMPANIES CLOSER TO THE START DATE OF OPERATIONS BASED ON CONTRACT AND RIGHT-OF-WAY NEGOTIATIONS.
 2. TOTAL EARTHWORK BETWEEN THE FACILITY PAD AND TEMPORARY EQUIPMENT PAD BALANCE (0 C.Y. OF IMPORT MATERIAL). COMBINING THE PADS REQUIRE A TOTAL CUT OF 13,411 C.Y. AND FILL OF 13,411 C.Y.
 3. EXISTING UTILITIES DISPLAYED ON THE GRADING PLAN ARE FOR REFERENCE PURPOSES ONLY. PRIOR TO CONSTRUCTION OR EARTHWORK, CONTRACTOR WILL BE RESPONSIBLE TO CALL FOR LOCATES: (800) 922-1987
 4. DIVERSION DITCH AND/OR BERM TO BE CONSTRUCTED AROUND THE ENTIRE PAD LOCATION. BERM SECTIONS TO BE COMPACTED IN ACCORDANCE WITH STANDARD CONSTRUCTION PRACTICES.

TEMPORARY EQUIPMENT PADS -
RAINBOW 24-9HZ DESIGN
SUMMARY

PAD QUANTITIES AND DESIGN PARAMETERS

CUT SLOPES = 5:1
FILL SLOPES = 5:1
SHRINKAGE FACTOR = 1.10
SWELL FACTOR = 1.00
GRADED PAD AREA = 1.47 ACRES
TOTAL PAD AREA = 1.80 ACRES

PAD QUANTITIES

TOTAL CUT FOR PAD = 7,013 C.Y.
TOTAL FILL FOR PAD = 5,153 C.Y.
TOPSOIL @ 12" DEPTH = 2,897 C.Y.
EXCESS MATERIAL = 1,860 C.Y.

FACILITY PAD - RAINBOW 24-9HZ CONSTRUCTION LAYOUT DRAWING - PLAN VIEW

FACILITY PAD QUANTITIES AND DESIGN PARAMETERS

CUT SLOPES = 5:1
FILL SLOPES = 5:1
SHRINKAGE FACTOR = 1.10
SWELL FACTOR = 1.00
GRADED FACILITY PAD SURFACE AREA = 3.58 ACRES
TOTAL FACILITY PAD AREA = 4.19 ACRES
PROPOSED OIL & GAS LOCATION = 26.26 ACRES

FACILITY PAD QUANTITIES

TOTAL CUT FOR FACILITY PAD = 6,398 C.Y.
TOTAL FILL FOR FACILITY PAD = 8,258 C.Y.
TOPSOIL @ 12" DEPTH = 6,763 C.Y.
TOTAL IMPORT = 1,860 C.Y.
TOTAL DISTURBANCE AREA
OIL & GAS LOCATION = 22.26 ACRES
WORKING PAD SURFACE = 16.17 ACRES
ACCESS ROADS = 3.57 ACRES
PIPELINE/UTILITY CORRIDOR = SEE NOTE 1

FACILITY REVISION: X00476-STOR-PP-2020 Rev M

FACILITY PAD - RAINBOW 24-9HZ

CONSTRUCTION LAYOUT DRAWING - PLAN VIEW
RAINBOW 9-1HZ, RAINBOW 9-2HZ, RAINBOW 9-3HZ, RAINBOW 9-4HZ,
RAINBOW 9-5HZ, RAINBOW 9-6HZ, RAINBOW 9-7HZ, RAINBOW 9-8HZ,
RAINBOW 9-9HZ, RAINBOW 9-10HZ, RAINBOW 9-11HZ, RAINBOW 9-12HZ,
RAINBOW 9-13HZ, RAINBOW 9-14HZ, RAINBOW 9-15HZ, RAINBOW 9-16HZ,
RAINBOW 9-17HZ, RAINBOW 9-18HZ, RAINBOW 9-19HZ, RAINBOW 9-20HZ,
RAINBOW 9-21HZ, RAINBOW 9-22HZ, RAINBOW 9-23HZ, RAINBOW 9-24HZ,
RAINBOW 9-25HZ, RAINBOW 9-26HZ, RAINBOW 9-27HZ & RAINBOW 9-28HZ
LOCATED IN SECTION 9, T5N, R67W, 6TH P.M.
GREELEY, COLORADO

Kerr-McGee Oil &
Gas Onshore LP
1099 18th Street
Denver, Colorado 80202



CONSULTING, LLC

LOVELAND OFFICE
6706 North Franklin Avenue
Loveland, Colorado 80538
Phone 970-776-4331

SHERIDAN OFFICE
1095 Saberton Avenue
Sheridan, Wyoming 82801
Phone 307-674-0609

FACILITY PAD LEGEND

- EXISTING WELL LOCATION
- PROPOSED WELL LOCATION
- EXISTING CONTOURS (2' INTERVAL)
- PROPOSED CONTOURS (2' INTERVAL)
- EPL
- EXISTING PIPELINE
- PROPOSED FLOWLINE
- EXISTING FENCE
- PROPOSED UNDERGROUND ELECTRIC LINE
- DIVERSION DITCH AND/OR BERM
- WORKING PAD SURFACE (WPS)

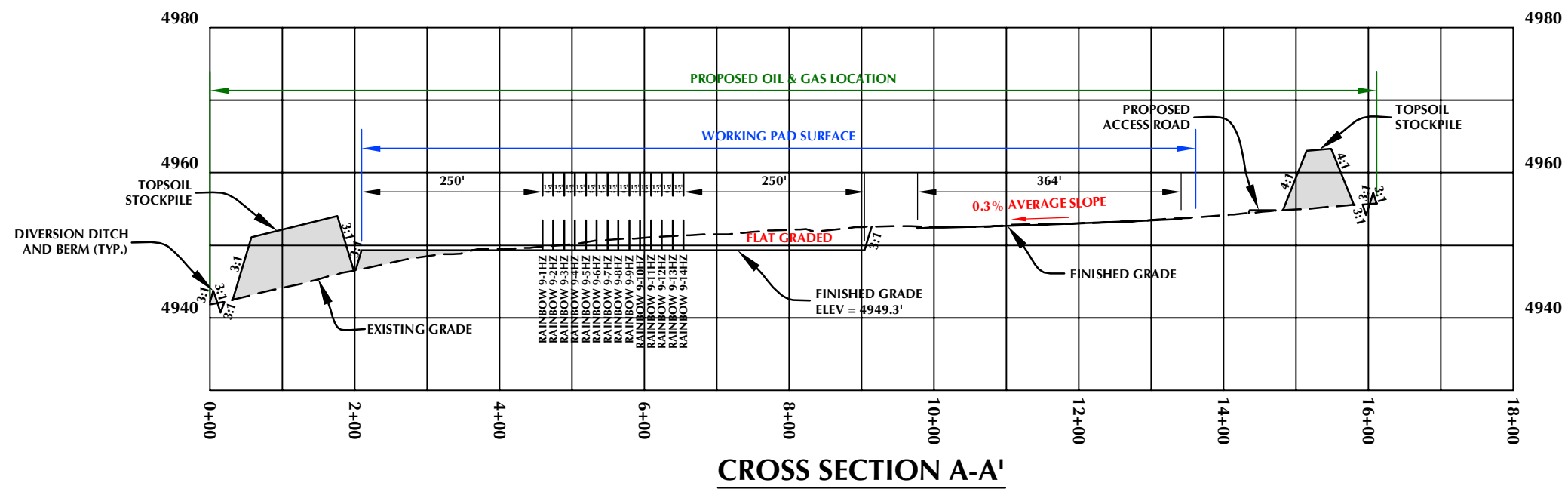


2' CONTOURS 0 50' 100'
HORIZONTAL 1" = 100'

SCALE: 1"=100' DATE: 1/4/22 SHEET NO:

REVISED: GLK 5/13/22 1 1 OF 1

K:\ANADARKO\2018\160_BROCKIE BROWN_8_RAINBOW T5N R67W SEC 9\DWG\RAINBOW_28_WELL_OPTION_FINAL.DWG, 3/2/2022 5:44:09 AM, Steven



RAINBOW 24-9HZ

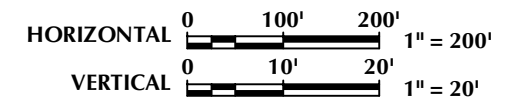
RAINBOW 9-1HZ, RAINBOW 9-2HZ, RAINBOW 9-3HZ, RAINBOW 9-4HZ,
RAINBOW 9-5HZ, RAINBOW 9-6HZ, RAINBOW 9-7HZ, RAINBOW 9-8HZ,
RAINBOW 9-9HZ, RAINBOW 9-10HZ, RAINBOW 9-11HZ, RAINBOW 9-12HZ,
RAINBOW 9-13HZ, RAINBOW 9-14HZ, RAINBOW 9-15HZ, RAINBOW 9-16HZ,
RAINBOW 9-17HZ, RAINBOW 9-18HZ, RAINBOW 9-19HZ, RAINBOW 9-20HZ,
RAINBOW 9-21HZ, RAINBOW 9-22HZ, RAINBOW 9-23HZ, RAINBOW 9-24HZ,
RAINBOW 9-25HZ, RAINBOW 9-26HZ, RAINBOW 9-27HZ & RAINBOW 9-28HZ
LOCATED IN SECTION 9, T5N, R67W, 6TH P.M.
GREELEY, COLORADO

CONSTRUCTION LAYOUT DRAWING - CROSS SECTIONS

**Kerr-McGee Oil &
Gas Onshore LP**
1099 18th Street
Denver, Colorado 80202

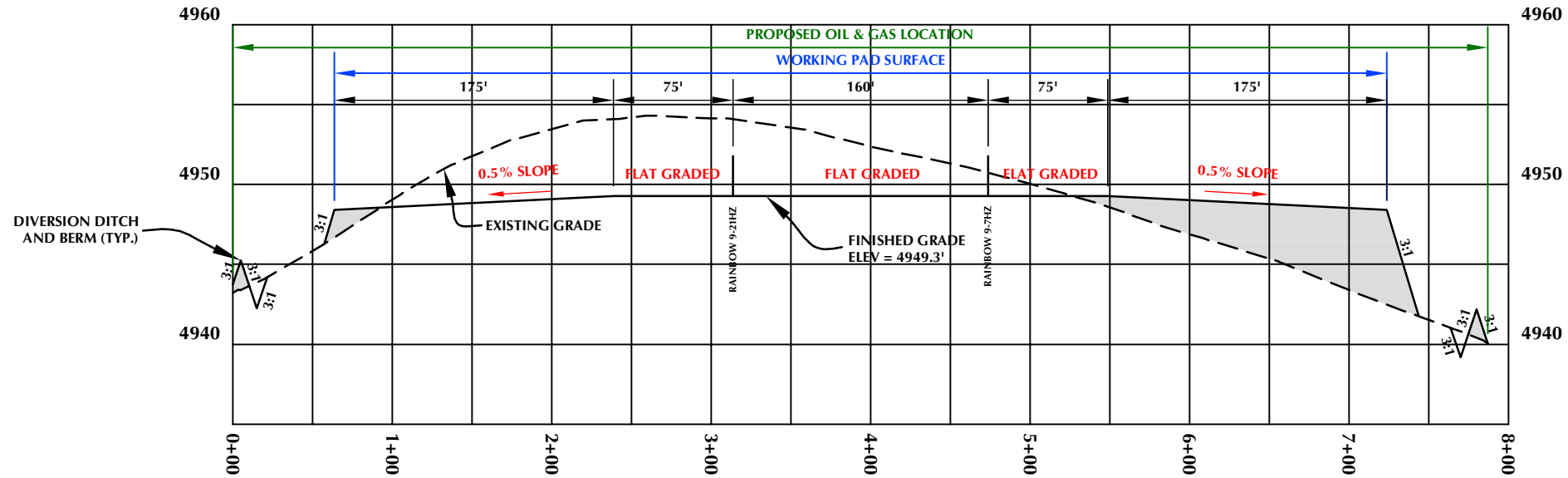


LOVELAND OFFICE
6706 North Franklin Avenue
Loveland, Colorado 80538
Phone 970-776-4331
SHERIDAN OFFICE
1095 Saberton Avenue
Sheridan, Wyoming 82801
Phone 307-674-0609

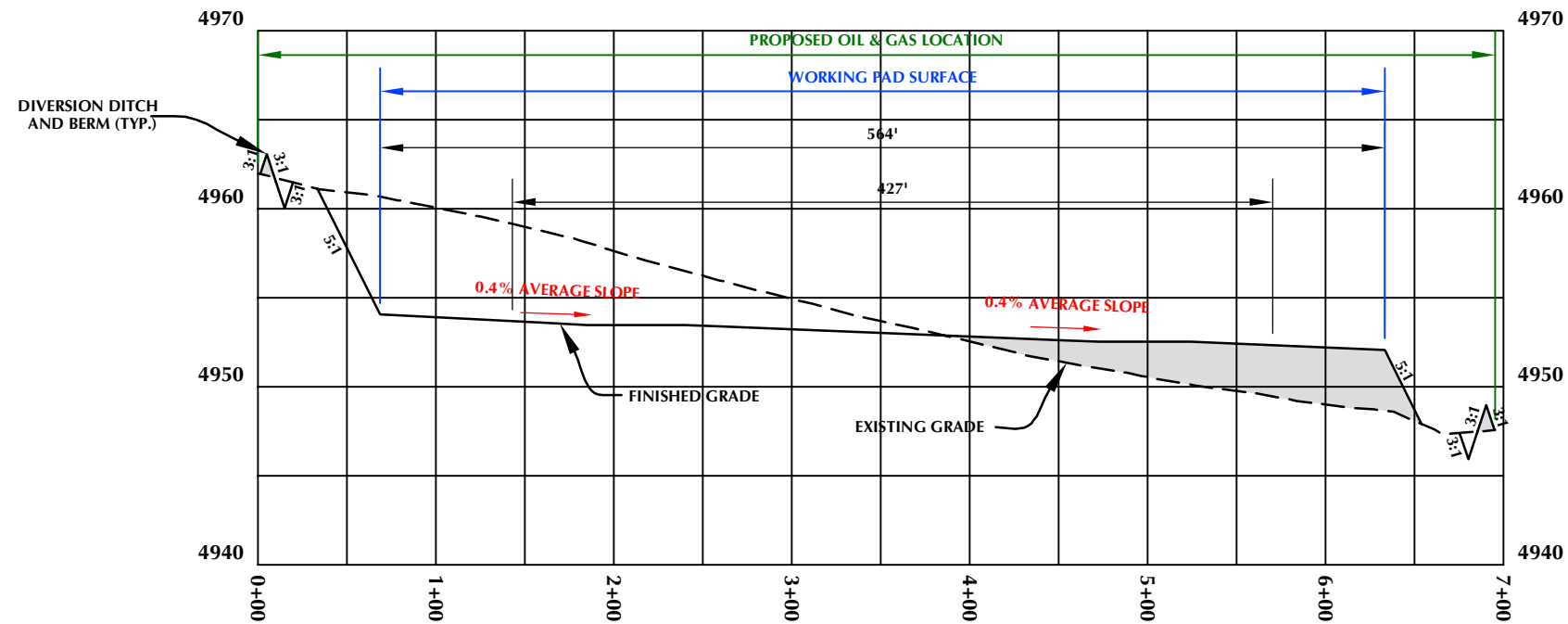


SCALE: 1"=200'	DATE: 3/1/22	SHEET NO:
REVISED:		1 1 OF 2

K:\ANADARKO\2018\160_BROCKIE BROWN_8_RAINBOW T5N R67W SEC 9\DWG\RAINBOW_28_WELL_OPTION_FINAL.DWG, 3/2/2022 5:54:33 AM, Steven



CROSS SECTION B-B'



CROSS SECTION C-C'

RAINBOW 24-9HZ

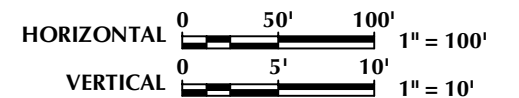
RAINBOW 9-1HZ, RAINBOW 9-2HZ, RAINBOW 9-3HZ, RAINBOW 9-4HZ, RAINBOW 9-5HZ, RAINBOW 9-6HZ, RAINBOW 9-7HZ, RAINBOW 9-8HZ, RAINBOW 9-9HZ, RAINBOW 9-10HZ, RAINBOW 9-11HZ, RAINBOW 9-12HZ, RAINBOW 9-13HZ, RAINBOW 9-14HZ, RAINBOW 9-15HZ, RAINBOW 9-16HZ, RAINBOW 9-17HZ, RAINBOW 9-18HZ, RAINBOW 9-19HZ, RAINBOW 9-20HZ, RAINBOW 9-21HZ, RAINBOW 9-22HZ, RAINBOW 9-23HZ, RAINBOW 9-24HZ, RAINBOW 9-25HZ, RAINBOW 9-26HZ, RAINBOW 9-27HZ & RAINBOW 9-28HZ LOCATED IN SECTION 9, T5N, R67W, 6TH P.M. GREELEY, COLORADO

CONSTRUCTION LAYOUT DRAWING - CROSS SECTIONS

Kerr-McGee Oil &
Gas Onshore LP
1099 18th Street
Denver, Colorado 80202

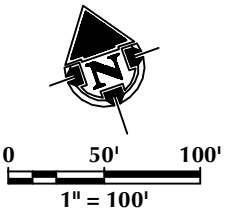
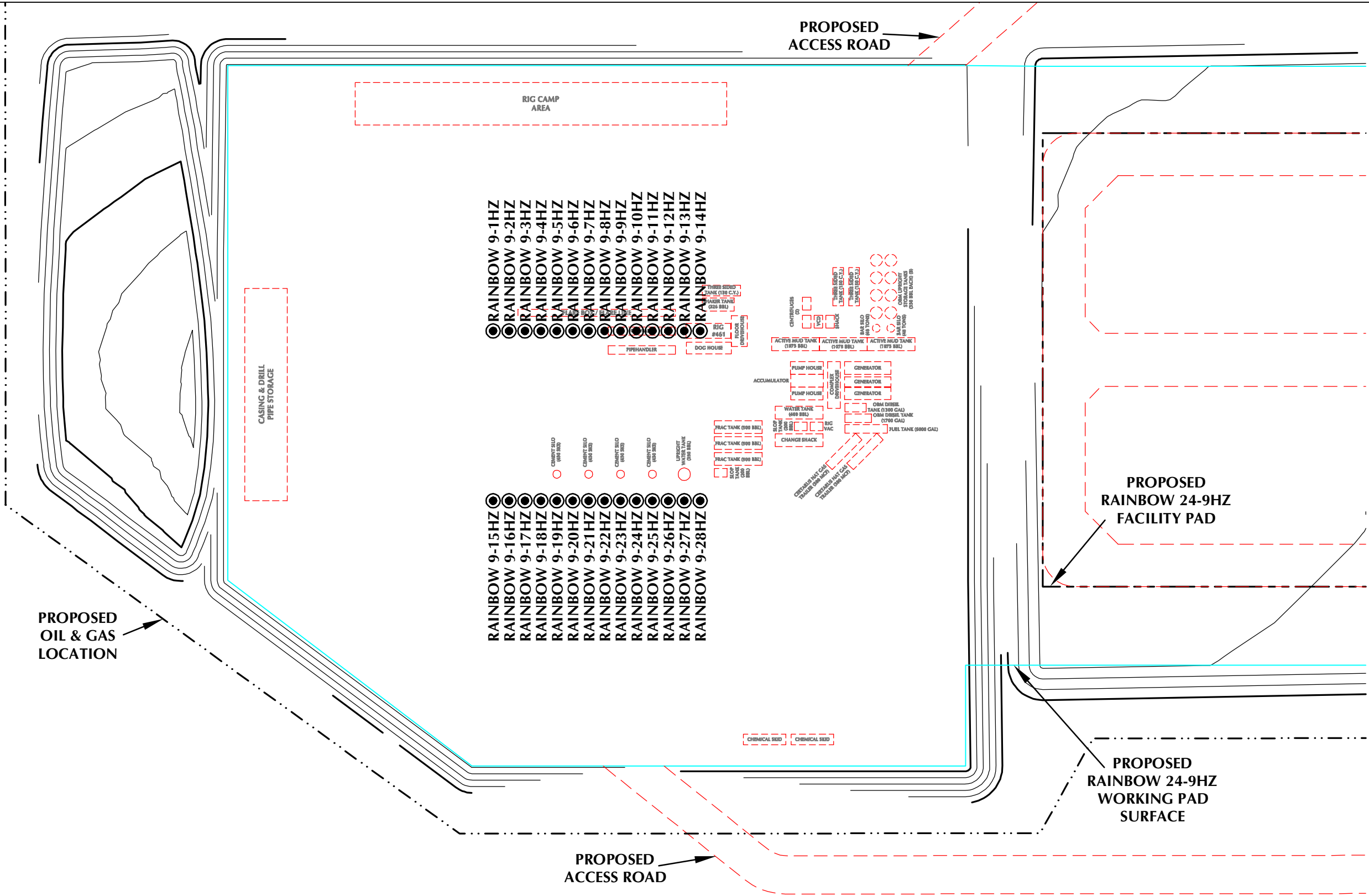


LOVELAND OFFICE
6706 North Franklin Avenue
Loveland, Colorado 80538
Phone 970-776-4331
SHERIDAN OFFICE
1095 Saberton Avenue
Sheridan, Wyoming 82801
Phone 307-674-0609



SCALE: 1"=100'	DATE: 3/1/22	SHEET NO: 2
REVISED:		2 OF 2

PRELIMINARY RIG LAYOUT DRAWING
RAINBOW 24-9HZ
E1/2 SECTION 9, TOWNSHIP 5 NORTH, RANGE 67 WEST, 6TH P.M.



- LEGEND**
- PROPOSED WELL
 - EXISTING WELL
 - - - PROPOSED OIL & GAS LOCATION
 - PROPOSED WORKING PAD SURFACE
 - PROPOSED 2' CONTOUR



LOVELAND OFFICE
6706 North Franklin Avenue
Loveland, Colorado 80538
Phone 970-776-4331

SHERIDAN OFFICE
1095 Saberton Avenue
Sheridan, Wyoming 82801
Phone 307-674-0609

**Kerr-McGee Oil &
Gas Onshore LP**
1099 18th Street
Denver, Colorado 80202

DATE SURVEYED: 2/21/22
DATE: 3/1/22
DRAFTER: GLK
REVISED:

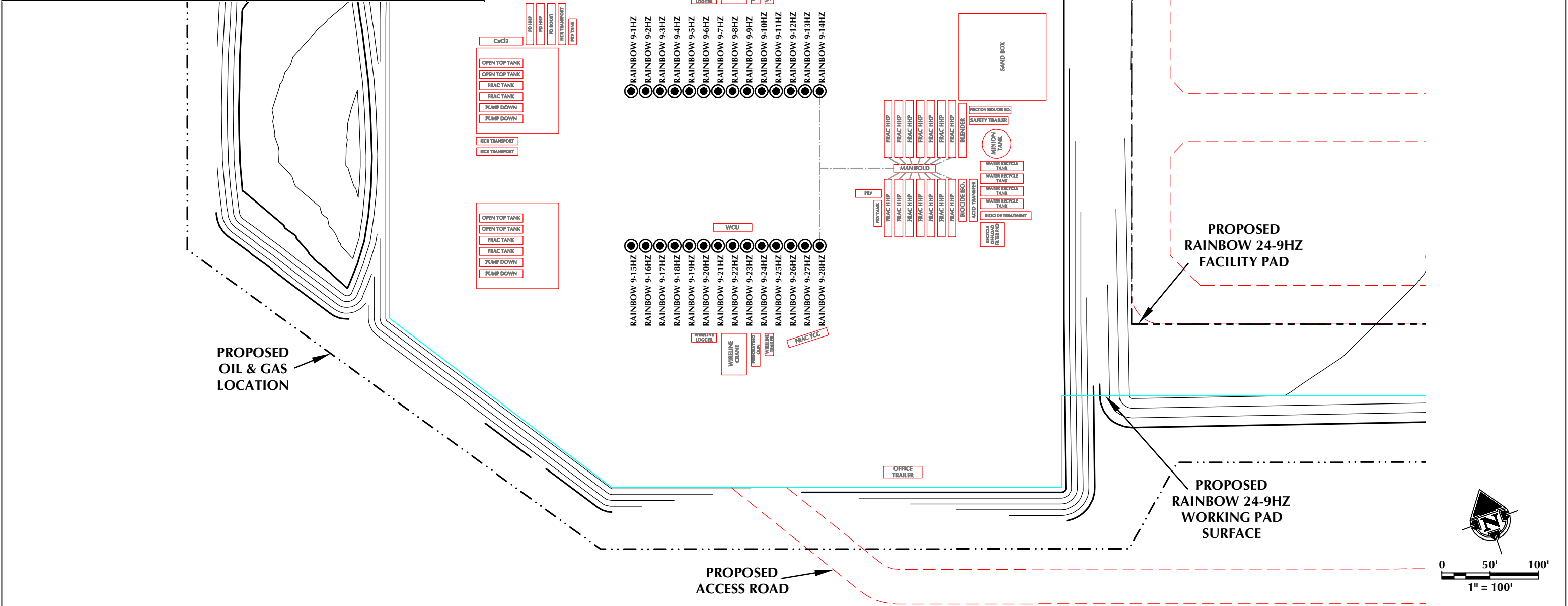
NOTES:

PRELIMINARY WELL COMPLETION AND STIMULATION LAYOUT DRAWING

RAINBOW 24-9HZ

E1/2 SECTION 9, TOWNSHIP 5 NORTH, RANGE 67 WEST, 6TH P.M.

EQUIPMENT	CAPACITY
ACID TRANSPORT	4,000 GAL CAPACITY
HCR SYNTHETIC ACID TRANSPORT	4,000 GAL CAPACITY
FRICTION REDUCER ISO	4,500 GAL CAPACITY
BIOCIDE ISO	6,000 GAL CAPACITY
DEF TANK	2,200 GAL DEF TANK
DIESEL TANK	16,000 GAL DIESEL TANK
MINION TANK	3,600 BBL CAPACITY
STORAGE TANK (OPEN TOP, CLOSED TOP, WATER)	500 BBL CAPACITY
WATER RECYCLE TANK	500 BBL CAPACITY



LEGEND

- PROPOSED WELL
- EXISTING WELL
- PROPOSED OIL & GAS LOCATION
- PROPOSED WORKING PAD SURFACE
- PROPOSED 2' CONTOUR



LOVELAND OFFICE
6706 North Franklin Avenue
Loveland, Colorado 80538
Phone 970-776-4331

SHERIDAN OFFICE
1095 Saberton Avenue
Sheridan, Wyoming 82801
Phone 307-674-0609

**Kerr-McGee Oil &
Gas Onshore LP**

1099 18th Street
Denver, Colorado 80202

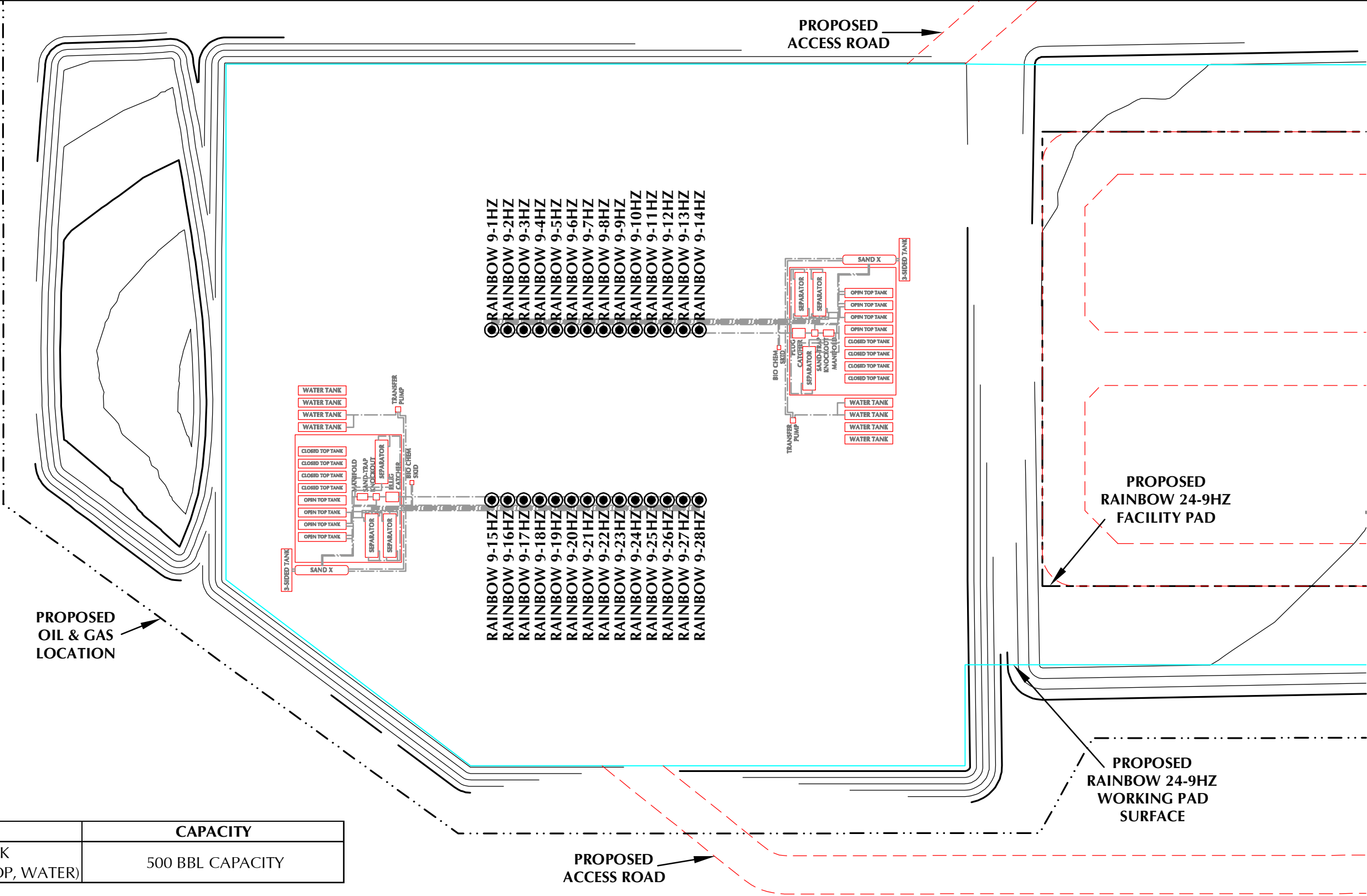
DATE SURVEYED: 2/21/22
DATE: 3/1/22
DRAFTER: GLK
REVISED:

NOTES:

PRELIMINARY FLOWBACK EQUIPMENT LAYOUT DRAWING

RAINBOW 24-9HZ

E1/2 SECTION 9, TOWNSHIP 5 NORTH, RANGE 67 WEST, 6TH P.M.



EQUIPMENT	CAPACITY
STORAGE TANK (OPEN TOP, CLOSED TOP, WATER)	500 BBL CAPACITY

- LEGEND**
- PROPOSED WELL
 - EXISTING WELL
 - PROPOSED OIL & GAS LOCATION
 - PROPOSED WORKING PAD SURFACE
 - PROPOSED 2' CONTOUR
 - PROPOSED PIPELINE



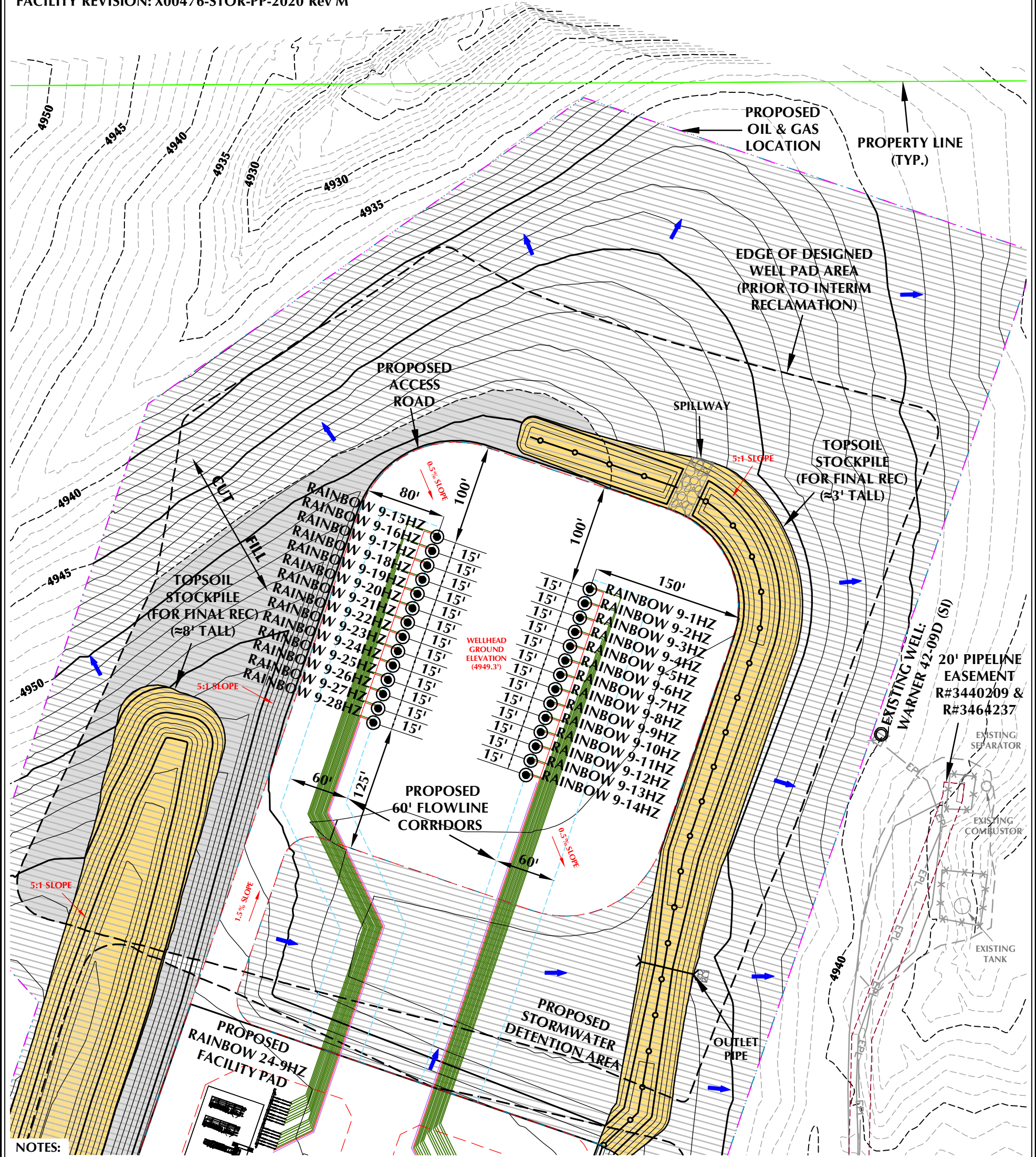
LOVELAND OFFICE
6706 North Franklin Avenue
Loveland, Colorado 80538
Phone 970-776-4331

SHERIDAN OFFICE
1095 Saberton Avenue
Sheridan, Wyoming 82801
Phone 307-674-0609

**Kerr-McGee Oil &
Gas Onshore LP**
1099 18th Street
Denver, Colorado 80202

DATE SURVEYED: 2/21/22
DATE: 3/1/22
DRAFTER: GLK
REVISED:

NOTES:
-WELLHEADS WILL REMAIN PERMANENTLY AFTER FLOWBACK IS COMPLETE.
ALL OTHER EQUIPMENT DISPLAYED IS TEMPORARY AND WILL BE REMOVED
FOLLOWING FLOWBACK OPERATIONS.



- NOTES:
- PIPELINE AND UTILITY CORRIDORS ARE PLANNED AND DETERMINED BY THIRD PARTY COMPANIES. SPECIFIC PIPELINE AND UTILITY CORRIDOR LOCATIONS WILL BE DECIDED BY THOSE THIRD PARTY COMPANIES CLOSER TO THE START DATE OF OPERATIONS BASED ON CONTRACT AND RIGHT-OF-WAY NEGOTIATIONS.
 - EXISTING UTILITIES DISPLAYED ON THE GRADING PLAN ARE FOR REFERENCE PURPOSES ONLY. PRIOR TO CONSTRUCTION OR EARTHWORK, CONTRACTOR WILL BE RESPONSIBLE TO CALL FOR LOCATES: (800) 922-1987
 - THE 8' TALL BERM IS TO BE CONSTRUCTED UTILIZING ±12,500 C.Y. OF BASE MATERIAL AT APPROXIMATELY 4.5' FEET OF HEIGHT AND COVERED WITH ±8,496 C.Y. OF TOPSOIL TO REACH THE EFFECTIVE 8' TALL BERM HEIGHT.
 - RECLAIMED AREA WILL BE RE-SEEDING AND RE-VEGETATED DURING INTERIM RECLAMATION.

RAINBOW 24-9HZ FACILITY LAYOUT DRAWING

QUANTITIES AND DESIGN PARAMETERS

SHRINKAGE FACTOR = 1.00
SWELL FACTOR = 1.00
PROPOSED OIL & GAS LOCATION = 26.26 ACRES
AREA RECLAIMED DURING
INTERIM RECLAMATION = 18.02 ACRES
TOTAL WELL PAD AREA AFTER
INTERIM RECLAMATION = 4.66 ACRES
TOTAL FACILITY PAD AREA AFTER
INTERIM RECLAMATION = 3.58 ACRES

WELL/FACILITY PAD QUANTITIES

TOTAL CUT = 37,687 C.Y.
TOTAL FILL = 37,687 C.Y.
TOTAL EXPORT = 0 C.Y.
TOPSOIL @ 12" DEPTH
FROM WELL PAD = 17,999 C.Y.
TOPSOIL @ 12" DEPTH FROM
FACILITY/TEMP EQUIPMENT PADS = 9,660 C.Y.
TOTAL TOPSOIL = 27,659 C.Y.
TOPSOIL USED FOR INTERIM REC = 14,371 C.Y.
TOPSOIL STORED FOR FINAL REC = 13,288 C.Y.
LAND USE: DRYLAND CROP

RAINBOW 24-9HZ

FACILITY LAYOUT DRAWING
RAINBOW 9-1HZ, RAINBOW 9-2HZ, RAINBOW 9-3HZ, RAINBOW 9-4HZ,
RAINBOW 9-5HZ, RAINBOW 9-6HZ, RAINBOW 9-7HZ, RAINBOW 9-8HZ,
RAINBOW 9-9HZ, RAINBOW 9-10HZ, RAINBOW 9-11HZ, RAINBOW 9-12HZ,
RAINBOW 9-13HZ, RAINBOW 9-14HZ, RAINBOW 9-15HZ, RAINBOW 9-16HZ,
RAINBOW 9-17HZ, RAINBOW 9-18HZ, RAINBOW 9-19HZ, RAINBOW 9-20HZ,
RAINBOW 9-21HZ, RAINBOW 9-22HZ, RAINBOW 9-23HZ, RAINBOW 9-24HZ,
RAINBOW 9-25HZ, RAINBOW 9-26HZ, RAINBOW 9-27HZ & RAINBOW 9-28HZ
LOCATED IN SECTION 9, T5N, R67W, 6TH P.M.
GREELEY, COLORADO

Kerr-McGee Oil &
Gas Onshore LP
1099 18th Street
Denver, Colorado 80202

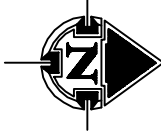


LOVELAND OFFICE
6706 North Franklin Avenue
Loveland, Colorado 80538
Phone 970-776-4331
SHERIDAN OFFICE
1095 Saberton Avenue
Sheridan, Wyoming 82801
Phone 307-674-0609

CONSULTING, LLC

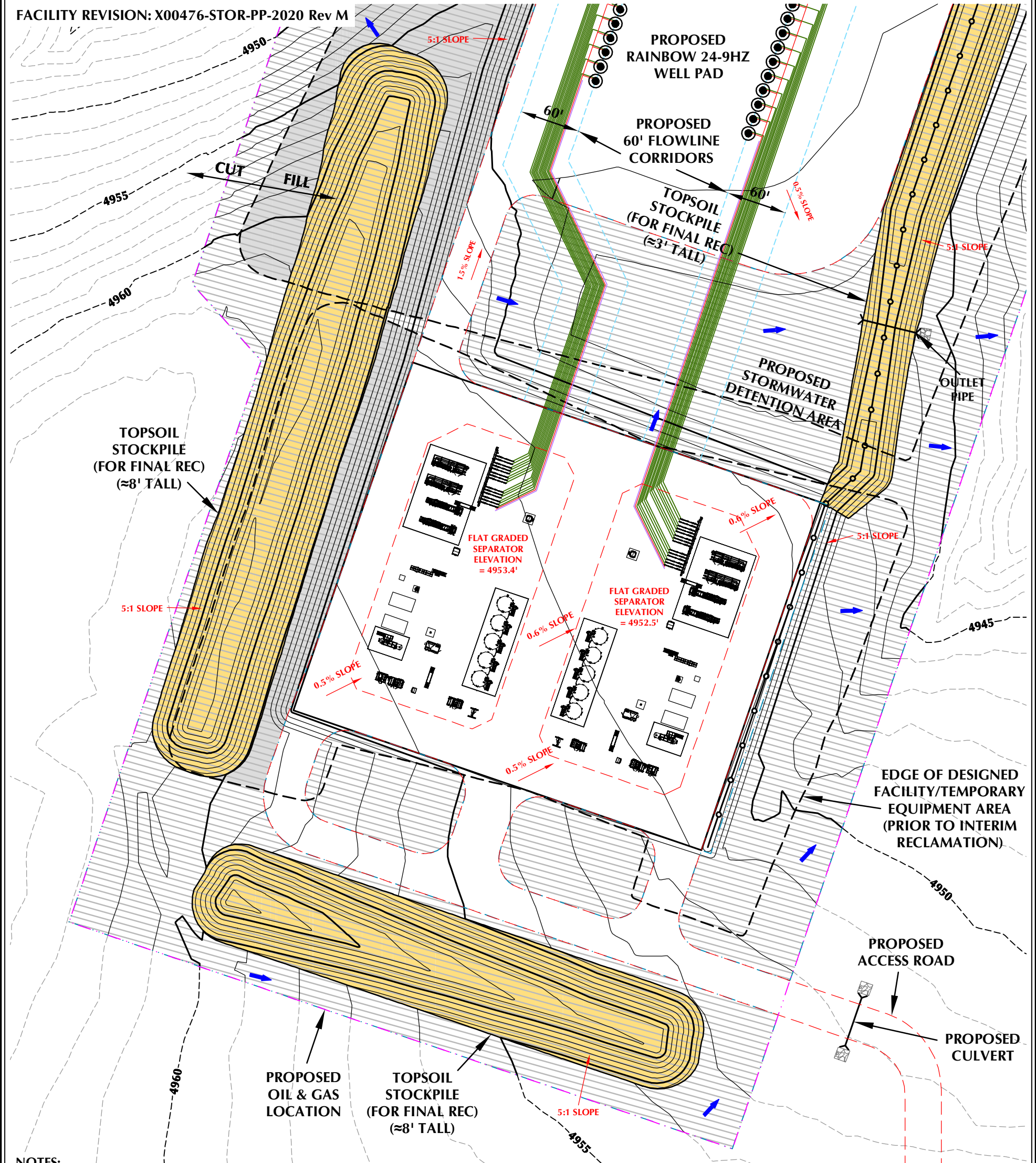
LEGEND

- EXISTING WELL LOCATION
- PROPOSED WELL LOCATION
- EXISTING CONTOURS (1' INTERVAL)
- PROPOSED CONTOURS (1' INTERVAL)
- EPL
- EXISTING PIPELINE
- PROPOSED FLOWLINE
- EXISTING FENCE
- RECLAMATION AREA
- PLANNED FLOW DIRECTION
- BERM



HORIZONTAL 0 50' 100' 1" = 100'
1' CONTOURS

SCALE: 1"=100' DATE: 2/10/22 SHEET NO: 1
REVISED: HJL 3/28/22 1 OF 4



- NOTES:
- PIPELINE AND UTILITY CORRIDORS ARE PLANNED AND DETERMINED BY THIRD PARTY COMPANIES. SPECIFIC PIPELINE AND UTILITY CORRIDOR LOCATIONS WILL BE DECIDED BY THOSE THIRD PARTY COMPANIES CLOSER TO THE START DATE OF OPERATIONS BASED ON CONTRACT AND RIGHT-OF-WAY NEGOTIATIONS.
 - EXISTING UTILITIES DISPLAYED ON THE GRADING PLAN ARE FOR REFERENCE PURPOSES ONLY. PRIOR TO CONSTRUCTION OR EARTHWORK, CONTRACTOR WILL BE RESPONSIBLE TO CALL FOR LOCATES: (800) 922-1987
 - THE 8' TALL BERM IS TO BE CONSTRUCTED UTILIZING $\pm 12,500$ C.Y. OF BASE MATERIAL AT APPROXIMATELY 4.5' FEET OF HEIGHT AND COVERED WITH $\pm 8,496$ C.Y. OF TOPSOIL TO REACH THE EFFECTIVE 8' TALL BERM HEIGHT.
 - RECLAIMED AREA WILL BE RE-SEEDING AND RE-VEGETATED DURING INTERIM RECLAMATION.

RAINBOW 24-9HZ FACILITY LAYOUT DRAWING

QUANTITIES AND DESIGN PARAMETERS

SHRINKAGE FACTOR = 1.00
SWELL FACTOR = 1.00
PROPOSED OIL & GAS LOCATION = 26.26 ACRES
AREA RECLAIMED DURING INTERIM RECLAMATION = 18.02 ACRES
TOTAL WELL PAD AREA AFTER INTERIM RECLAMATION = 4.66 ACRES
TOTAL FACILITY PAD AREA AFTER INTERIM RECLAMATION = 3.58 ACRES

WELL/FACILITY PAD QUANTITIES

TOTAL CUT = 37,687 C.Y.
TOTAL FILL = 37,687 C.Y.
TOTAL EXPORT = 0 C.Y.
TOPSOIL @ 12" DEPTH FROM WELL PAD = 17,999 C.Y.
TOPSOIL @ 12" DEPTH FROM FACILITY/TEMP EQUIPMENT PADS = 9,660 C.Y.
TOTAL TOPSOIL = 27,659 C.Y.
TOPSOIL USED FOR INTERIM REC = 14,371 C.Y.
TOPSOIL STORED FOR FINAL REC = 13,288 C.Y.
LAND USE: DRYLAND CROP

RAINBOW 24-9HZ

FACILITY LAYOUT DRAWING
RAINBOW 9-1HZ, RAINBOW 9-2HZ, RAINBOW 9-3HZ, RAINBOW 9-4HZ, RAINBOW 9-5HZ, RAINBOW 9-6HZ, RAINBOW 9-7HZ, RAINBOW 9-8HZ, RAINBOW 9-9HZ, RAINBOW 9-10HZ, RAINBOW 9-11HZ, RAINBOW 9-12HZ, RAINBOW 9-13HZ, RAINBOW 9-14HZ, RAINBOW 9-15HZ, RAINBOW 9-16HZ, RAINBOW 9-17HZ, RAINBOW 9-18HZ, RAINBOW 9-19HZ, RAINBOW 9-20HZ, RAINBOW 9-21HZ, RAINBOW 9-22HZ, RAINBOW 9-23HZ, RAINBOW 9-24HZ, RAINBOW 9-25HZ, RAINBOW 9-26HZ, RAINBOW 9-27HZ & RAINBOW 9-28HZ
LOCATED IN SECTION 9, T5N, R67W, 6TH P.M.
GREELEY, COLORADO

Kerr-McGee Oil & Gas Onshore LP
1099 18th Street
Denver, Colorado 80202

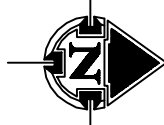


LOVELAND OFFICE
6706 North Franklin Avenue
Loveland, Colorado 80538
Phone 970-776-4331

SHERIDAN OFFICE
1095 Saberton Avenue
Sheridan, Wyoming 82801
Phone 307-674-0609

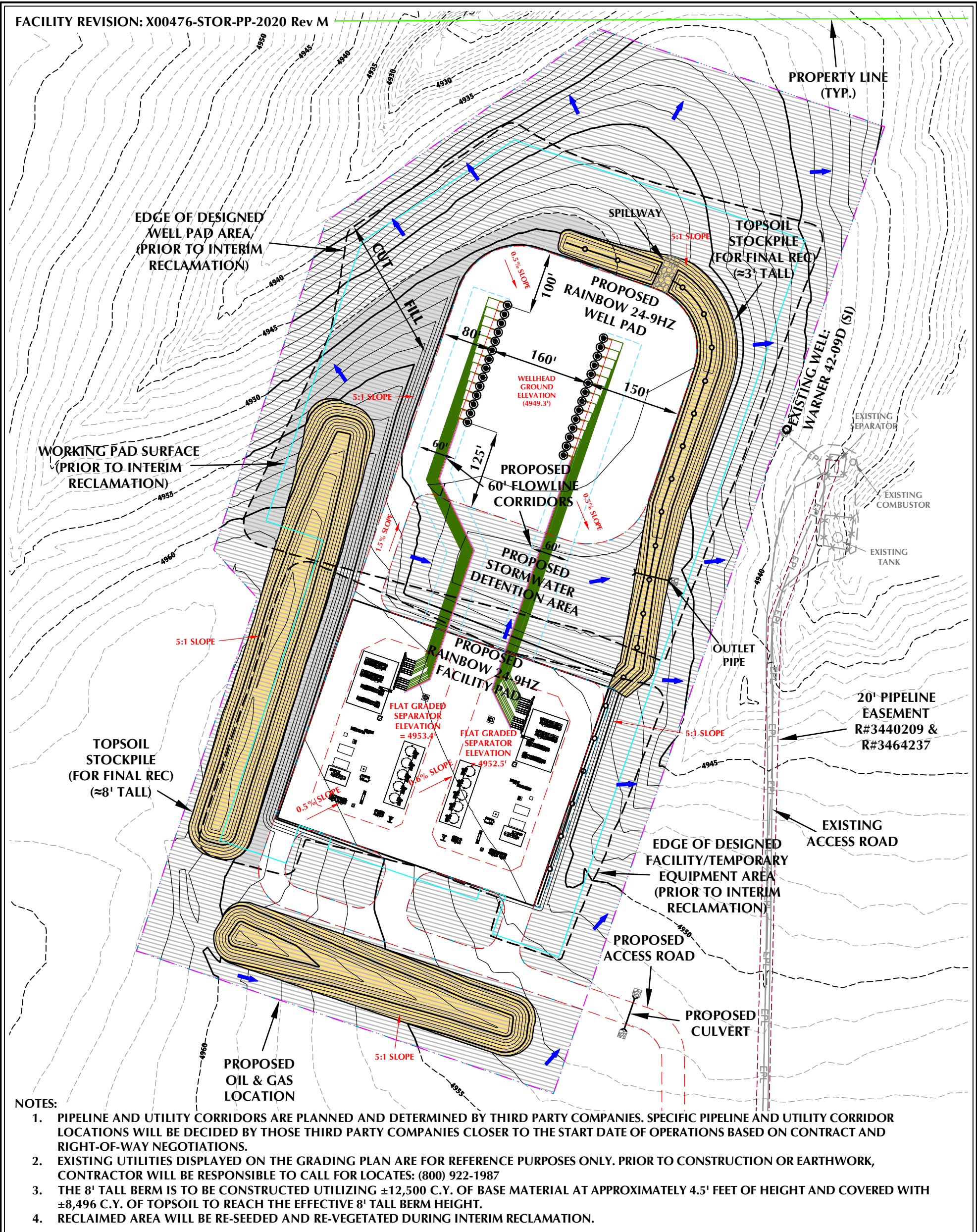
LEGEND

- EXISTING WELL LOCATION
- PROPOSED WELL LOCATION
- EXISTING CONTOURS (1' INTERVAL)
- PROPOSED CONTOURS (1' INTERVAL)
- EPL
- EXISTING PIPELINE
- PROPOSED FLOWLINE
- EXISTING FENCE
- RECLAMATION AREA
- PLANNED FLOW DIRECTION
- BERM



HORIZONTAL 0 50' 100' 1" = 100'
1' CONTOURS

SCALE: 1"=100' DATE: 2/10/22 SHEET NO: 2 OF 4
REVISED: HJL 3/28/22



RAINBOW 24-9HZ FACILITY LAYOUT DRAWING

QUANTITIES AND DESIGN PARAMETERS

SHRINKAGE FACTOR = 1.00
SWELL FACTOR = 1.00
PROPOSED OIL & GAS LOCATION = 26.26 ACRES
AREA RECLAIMED DURING
INTERIM RECLAMATION = 18.02 ACRES
TOTAL WELL PAD AREA AFTER
INTERIM RECLAMATION = 4.66 ACRES
TOTAL FACILITY PAD AREA AFTER
INTERIM RECLAMATION = 3.58 ACRES

WELL/FACILITY PAD QUANTITIES

TOTAL CUT = 37,687 C.Y.
TOTAL FILL = 37,687 C.Y.
TOTAL EXPORT = 0 C.Y.
TOPSOIL @ 12" DEPTH
FROM WELL PAD = 17,999 C.Y.
TOPSOIL @ 12" DEPTH FROM
FACILITY/TEMP EQUIPMENT PADS = 9,660 C.Y.
TOTAL TOPSOIL = 27,659 C.Y.
TOPSOIL USED FOR INTERIM REC = 14,371 C.Y.
TOPSOIL STORED FOR FINAL REC = 13,288 C.Y.
LAND USE: DRYLAND CROP

RAINBOW 24-9HZ

FACILITY LAYOUT DRAWING
RAINBOW 9-1HZ, RAINBOW 9-2HZ, RAINBOW 9-3HZ, RAINBOW 9-4HZ,
RAINBOW 9-5HZ, RAINBOW 9-6HZ, RAINBOW 9-7HZ, RAINBOW 9-8HZ,
RAINBOW 9-9HZ, RAINBOW 9-10HZ, RAINBOW 9-11HZ, RAINBOW 9-12HZ,
RAINBOW 9-13HZ, RAINBOW 9-14HZ, RAINBOW 9-15HZ, RAINBOW 9-16HZ,
RAINBOW 9-17HZ, RAINBOW 9-18HZ, RAINBOW 9-19HZ, RAINBOW 9-20HZ,
RAINBOW 9-21HZ, RAINBOW 9-22HZ, RAINBOW 9-23HZ, RAINBOW 9-24HZ,
RAINBOW 9-25HZ, RAINBOW 9-26HZ, RAINBOW 9-27HZ & RAINBOW 9-28HZ
LOCATED IN SECTION 9, T5N, R67W, 6TH P.M.
GREELEY, COLORADO

**Kerr-McGee Oil &
Gas Onshore LP**
1099 18th Street
Denver, Colorado 80202

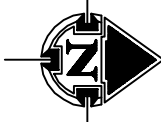


LOVELAND OFFICE
6706 North Franklin Avenue
Loveland, Colorado 80538
Phone 970-776-4331

SHERIDAN OFFICE
1095 Saberton Avenue
Sheridan, Wyoming 82801
Phone 307-674-0609

LEGEND

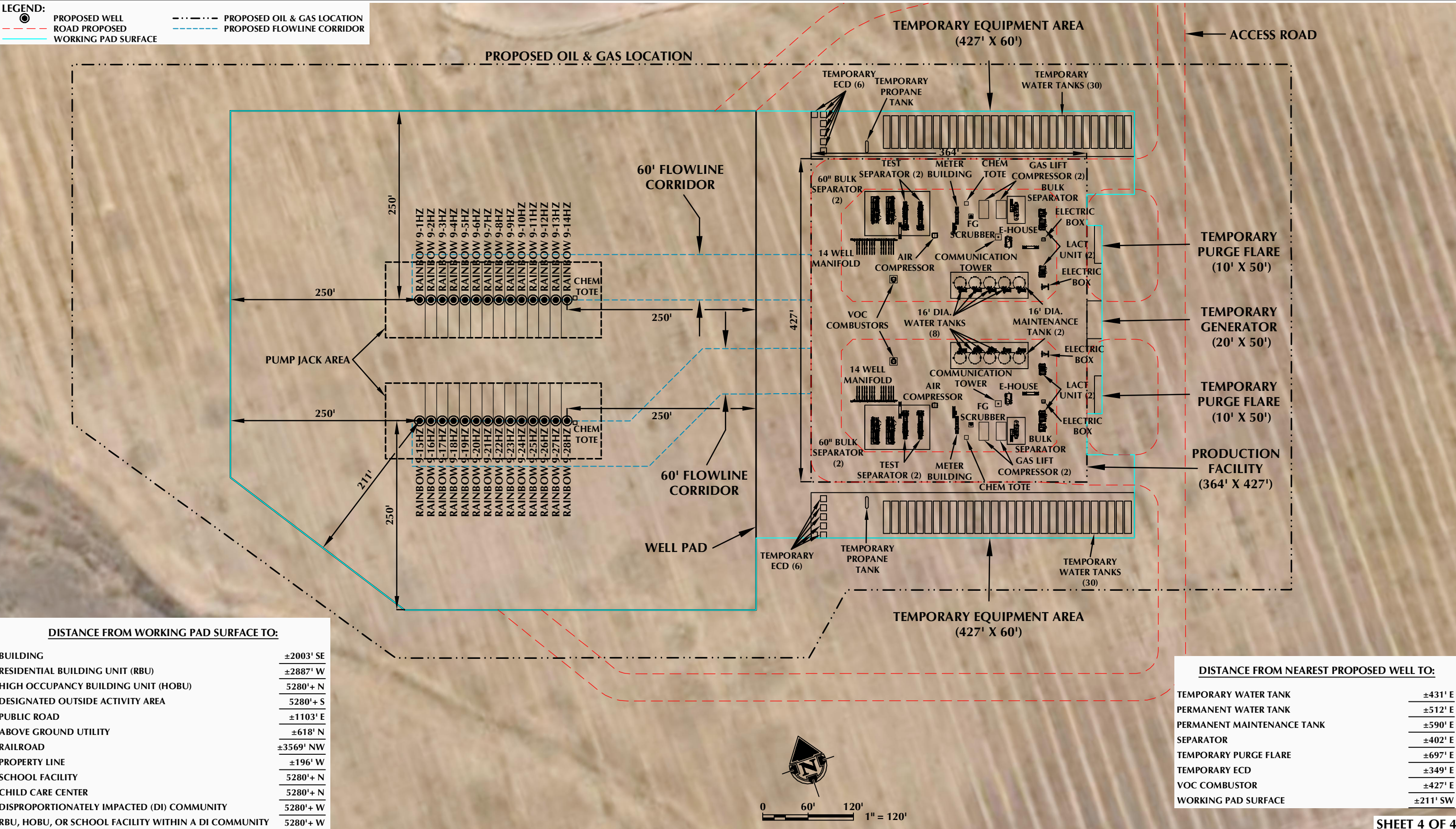
- EXISTING WELL LOCATION
- PROPOSED WELL LOCATION
- EXISTING CONTOURS (1' INTERVAL)
- PROPOSED CONTOURS (1' INTERVAL)
- EPL
- EXISTING PIPELINE
- PROPOSED FLOWLINE
- EXISTING FENCE
- RECLAMATION AREA
- PLANNED FLOW DIRECTION
- BERM



HORIZONTAL 0 75' 150' 1" = 150'
1' CONTOURS

SCALE: 1"=100' DATE: 2/10/22 SHEET NO:
HJL 3
REVISED: 3/28/22 3 OF 4

LEGEND:
 PROPOSED WELL
 ROAD PROPOSED
 WORKING PAD SURFACE
 PROPOSED OIL & GAS LOCATION
 PROPOSED FLOWLINE CORRIDOR



DISTANCE FROM WORKING PAD SURFACE TO:	
BUILDING	±2003' SE
RESIDENTIAL BUILDING UNIT (RBU)	±2887' W
HIGH OCCUPANCY BUILDING UNIT (HOBV)	5280'+ N
DESIGNATED OUTSIDE ACTIVITY AREA	5280'+ S
PUBLIC ROAD	±1103' E
ABOVE GROUND UTILITY	±618' N
RAILROAD	±3569' NW
PROPERTY LINE	±196' W
SCHOOL FACILITY	5280'+ N
CHILD CARE CENTER	5280'+ N
DISPROPORTIONATELY IMPACTED (DI) COMMUNITY	5280'+ W
RBU, HOBV, OR SCHOOL FACILITY WITHIN A DI COMMUNITY	5280'+ W

DISTANCE FROM NEAREST PROPOSED WELL TO:	
TEMPORARY WATER TANK	±431' E
PERMANENT WATER TANK	±512' E
PERMANENT MAINTENANCE TANK	±590' E
SEPARATOR	±402' E
TEMPORARY PURGE FLARE	±697' E
TEMPORARY ECD	±349' E
VOC COMBUSTOR	±427' E
WORKING PAD SURFACE	±211' SW

NOTES:
1. EQUIPMENT PLACEMENT IS APPROXIMATE AND SUBJECT TO MINOR MODIFICATION DUE TO SPECIFIC CIRCUMSTANCES.
2. FLOWLINE CORRIDOR IS APPROXIMATE AND SUBJECT TO MINOR MODIFICATION DUE TO SPECIFIC CIRCUMSTANCES.

FACILITY COORDINATES:
LAT: 40.414437° LONG: -104.893659° (NAD83)

DATA SOURCES:
- AERIAL COURTESY OF NEARMAP


609 CONSULTING, LLC
LOVELAND OFFICE
6706 North Franklin Avenue
Loveland, Colorado 80538
Phone 970-776-4331
SHERIDAN OFFICE
1095 Saberton Avenue
Sheridan, Wyoming 82801
Phone 307-674-0609

Kerr-McGee Oil & Gas Onshore LP
1099 18th Street
Denver, Colorado 80202

SCALE: 1" = 120'
DATE SURVEYED: 2/21/22
DATE: 3/1/22
DRAFTER: GLK
REVISED: 5/13/22

FACILITY LAYOUT DRAWING
RAINBOW 24-9HZ
LOCATED IN SECTION 9, T5N, R67W, 6TH P.M.
GREELEY, COLORADO