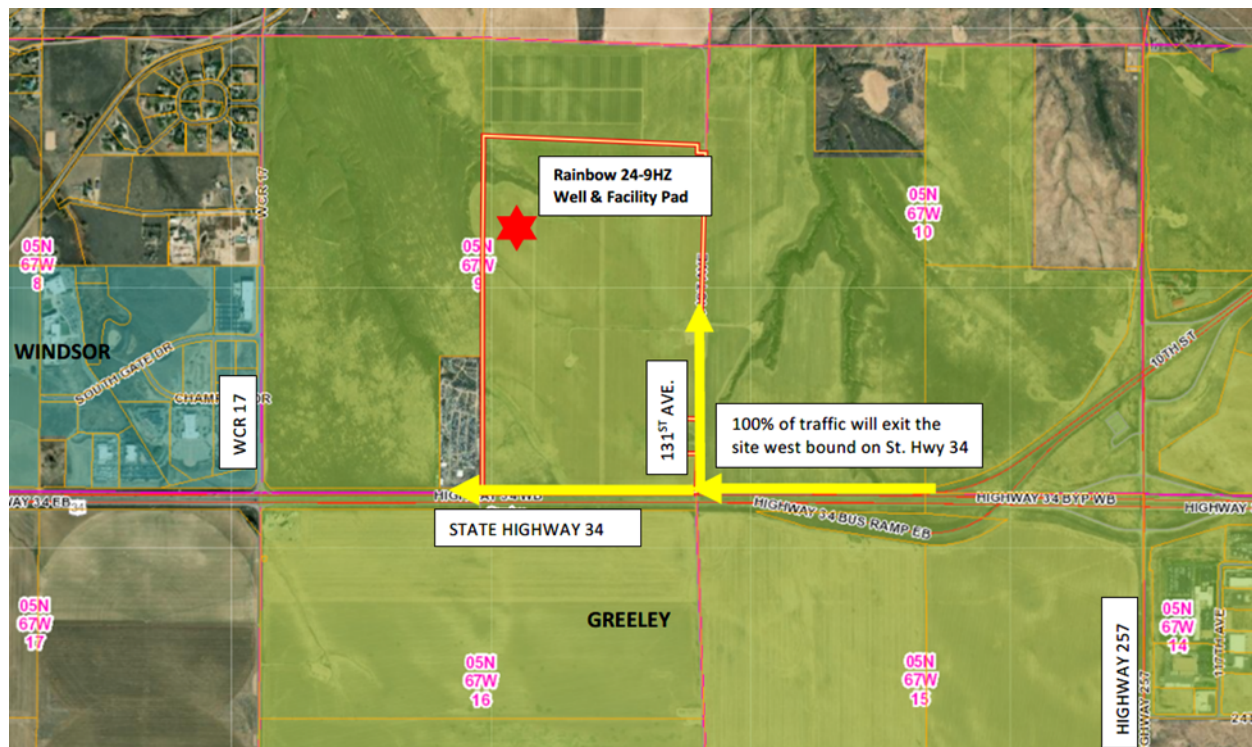


February 28, 2022

Kerr McGee Oil & Gas Onshore LP (KMOG) plans to utilize the intersection at State Highway 34 north onto 131<sup>st</sup> Avenue to access the proposed Rainbow 24-9HZ oil and gas pad (28 wells) located to the north of this intersection. Access at this intersection is proposed to be limited turning movements to right-in right-out from State Highway 34. See vicinity map below:



Development of oil and gas at this location will occur in five phases of construction, generally over an 18 to 24-month period:

1. Pad Construction (1 month)
2. Drilling Operations (6 months)
3. Completion Operations (4 months)
4. Production Facility Construction/Equipment placement (6 weeks)
5. Reclamation (Interim) (1 month)

Below is estimated number of round trips/day (Round trip = 1 trip in and 1 trip out) expected for each vehicle (type, size, weight) passenger cars/pickups, tandem trucks, semi-truck/trailer/RV. The estimated time periods for these phases are listed in the truck traffic table below. It is KMOG's intention to drill all the wells at one time and then complete all the wells at one time. While KMOG plans development in a phased approach, there may be delays between these phases due to unforeseen circumstances and/or economic conditions.

	Construction Phase	Drilling Phase	Completions Phase	Production Facility Construction & Equipment Placement Phase	Reclamation Phase
Days	30	185	126	44	30
Pickups/Passenger Cars	744	9,293	14,364	833	902
Tandem Trucks	339	717	1,890	318	1,125
Semi and Trailer	7,149	2,888	4,788	688	2,260
Oversized Loads	26	178	-	71	16
Total Trips (Avg/day)	275	71	167	43	143
<b>Total</b>	<b>8,258</b>	<b>13,076</b>	<b>21,042</b>	<b>1,910</b>	<b>4,303</b>

Following the construction phases, the traffic volume will decrease to baseline levels during the production phase with relative few truck trips over the next 25 years. This is due to the wells site having a pipeline infrastructure to transport the oil and gas from the site. This reduces the expected operational traffic significantly.

#### **Hours of Operations:**

The highest traffic volumes from construction of the oil and gas location are during normal business hours (7 am to 5 pm). Drilling and completion operations are both 24 hours a day, seven days a week. Highest volumes of traffic are between the hours of 6 am. and 7 pm.

#### **Traffic Reduction Measures:**

Water for use in completion operations will be secured by KMOG through its own “Water On Demand” (WOD) system, or from a water supplier in the immediate area of the drill site. This WOD system is a network of over 180 miles of underground pipeline that stretches the length of the 20-mile by 30-mile field to source and transport water to completions crews. This system eliminates more than 2,000 truck trips per day field-wide, while also reducing associated impacts of traffic, noise, emissions, and dust.

KMOG works hard to reduce the facility size and create compact development areas. KMOG’s production facilities are designed and constructed to eliminate oil storage tanks, trucking oil and the associated emissions. KMOG intends to utilize a comprehensive below ground oil and gas pipeline system to transport produced oil and gas to central processing facilities, resulting in a smaller production facility with fewer tanks. This pipeline infrastructure mitigates truck traffic in the area, by eliminating significant traffic throughout the life of the wells.

In addition, all new well sites are remotely monitored 24 hours a day, seven days a week by representatives in KMOG’s Integrated Operations Center (IOC). This monitoring also helps reduce traffic to well sites. From the IOC, located in Platteville, KMOG personnel can turn wells and equipment on and off, measure at tank levels, verify pressures and temperatures. This remote monitoring reduces daily traffic to the location.