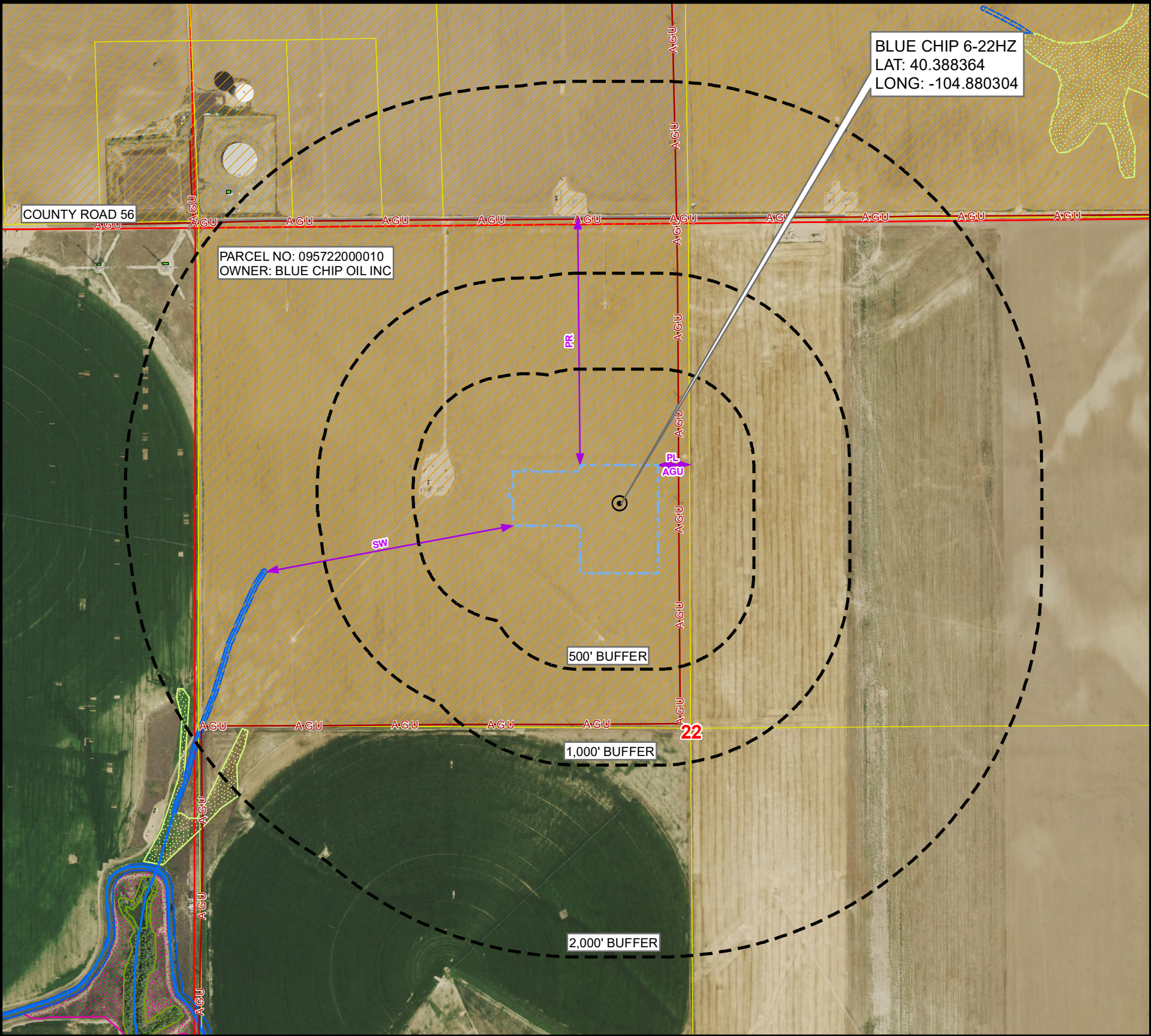


CULTURAL FEATURES MAP  
BLUE CHIP 6-22HZ

SECTION 22, TOWNSHIP 5 NORTH, RANGE 67 WEST, 6TH P.M., GREELEY, COLORADO



# OF CULTURAL FEATURES WITHIN	0-500 FEET	501-1,000 FEET	1,001-2,000 FEET
BUILDING UNIT	0	0	0
RESIDENTIAL BUILDING UNIT	0	0	0
HIGH OCCUPANCY BUILDING UNIT	0	0	0
SCHOOL PROPERTY	0	0	0
SCHOOL FACILITY	0	0	0
DESIGNATED OUTSIDE ACTIVITY AREA	0	0	0

NOTE:  
THIS MAP IS A COMPILATION OF PUBLICLY AVAILABLE DATA. THE ACCURACY AND COMPLETENESS OF SAID DATA HAS NOT BEEN VERIFIED BY 609 CONSULTING, LLC. EXISTING CONDITIONS MAY DIFFER FROM WHAT IS SHOWN.

MEASURED FROM THE NEAREST		EDGE OF WORKING PAD
B	BUILDING	2000'+
BU	BUILDING UNIT	2000'+
RBU	RESIDENTIAL BUILDING UNIT	2000'+
HOB	HIGH OCCUPANCY BUILDING UNIT	2000'+
DOAA	DESIGNATED OUTSIDE ACTIVITY AREA	2000'+
PR	PUBLIC ROAD	±1290' N
AGU	ABOVE GROUND UTILITY	±109' E
RR	RAILROAD	2000'+
PL	PROPERTY LINE	±169' E
S	SCHOOL FACILITY	2000'+
CC	CHILD CARE CENTER	2000'+
DIC	DISPROPORTIONATELY IMPACTED COMMUNITY BOUNDARY	2000'+
MB	MUNICIPALITY BOUNDARY	±0'
CB	COUNTY BOUNDARY	2000'+
SW	SURFACE WATER	±1305' W
PWS	PUBLIC WATER SYSTEM SUPPLY WELL	2000'+
HPH	HIGH PRIORITY HABITAT	2000'+

Legend

- PROPOSED REFERENCE POINT

PROPOSED WORKING PAD SURFACE

BUFFER

BUILDING

NON-RESIDENTIAL BUILDING UNIT

RESIDENTIAL BUILDING UNIT

HEALTH FACILITY

SCHOOL FACILITY

CHILD CARE FACILITY

ABOVE GROUND UTILITY

PUBLIC ROAD

RAILROAD

DITCH/CANAL/DRAINAGE
- RIPARIAN CORRIDOR

RIVERINE CORRIDOR

FRESHWATER EMERGENT WETLAND

FRESHWATER FORESTED/SHRUB WETLAND

OTHER WETLAND

LAKE

FRESHWATER POND

100-YEAR FLOODPLAIN (EFFECTIVE, 2016)

100-YEAR FLOODPLAIN (PRELIMINARY, 2020)

100-YEAR FLOODWAY (PRELIMINARY, 2020)

GUDI SOURCE LOCATIONS (RULE 411)

TYPE III WELL LOCATIONS (RULE 411)
- DISPROPORTIONATELY IMPACTED COMMUNITY

PARCEL BOUNDARY

GREELEY JURISDICTIONAL BOUNDARY

Kerr-McGee Oil &  
Gas Onshore L.P.  
1099 18th Street  
Denver, Colorado 80202



LOVELAND OFFICE  
6706 North Franklin Avenue  
Loveland, Colorado 80538  
Phone 970-776-4331  
SHERIDAN OFFICE  
1095 Saberton Avenue  
Sheridan, Wyoming 82801  
Phone 307-674-0609



Drawn by: BB  
Revised: AK  
Date: 4 Nov 2021  
Date: 11 Feb 2022

NAD83 CO-Nft  
Scale: 1" = 600ft