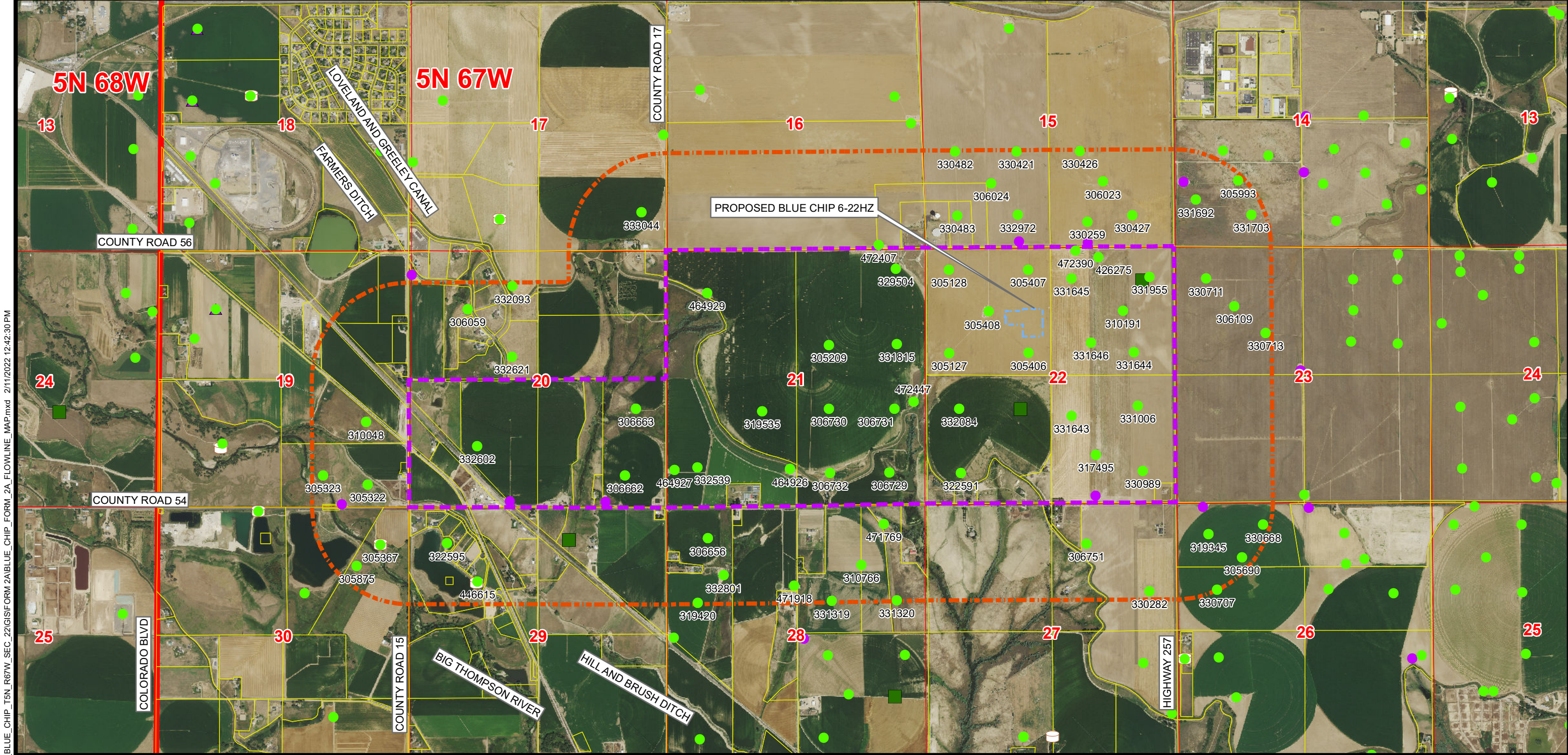


RELATED LOCATION & FLOWLINE MAP
BLUE CHIP 6-22HZ
SECTION 22, TOWNSHIP 5 NORTH, RANGE 67 WEST, 6TH P.M., GREELEY, COLORADO



K:\ANADARKO\2020\2020_128_BLUE_CHIP_T5N_R67W_SEC_22\GIS\FORM 2A\BLUE_CHIP_FORM_2A_FLOWLINE_MAP.mxd 2/11/2022 12:42:30 PM

Legend

PROPOSED WORKING PAD SURFACE

PROPOSED OGDP BOUNDARY

2000' BUFFER - PROPOSED OGDP BOUNDARY

PARCEL BOUNDARY

WELD OIL AND GAS LOCATION ASSESSMENT (WOGLA)

APPROVED WELL PERMIT (FORM 2)

PENDING WELL PERMIT (FORM 2)

PENDING LOCATION PERMIT (FORM 2A)

APPROVED LOCATION PERMIT (FORM 2A)

ACTIVE LOCATION

VISIBLE LOCATION ON AERIAL NOT IN COGCC GIS

CLOSED PIT

TANK BATTERY

NOTE: THIS MAP IS A COMPILATION OF PUBLICLY AVAILABLE DATA. THE ACCURACY AND COMPLETENESS OF SAID DATA HAS NOT BEEN VERIFIED BY 609 CONSULTING, LLC. EXISTING CONDITIONS MAY DIFFER FROM WHAT IS SHOWN.

Kerr-McGee Oil & Gas Onshore LP

1099 18th Street
Denver, Colorado 80202

609 Consulting, LLC

LOVELAND OFFICE
6706 North Franklin Avenue
Loveland, Colorado 80538
Phone 970-776-4331

SHERIDAN OFFICE
1095 Saberton Avenue
Sheridan, Wyoming 82801
Phone 307-674-0609

Drawn by: BB
Revised: AK

Date: 4 Nov 2021
Date: 11 Feb 2022

N

1" = 2,000ft

0 1,000 2,000

NAD83 CO-Nft

Sheet:
1 of **2**

K:\NADARCO2020\2020_128_BLUE_CHIP_15N_R67W_SEC_22\GIS\FORM 2A\BLUE_CHIP_FORM_2A_FLOWLINE_TABLE.mxd 2/11/2022 12:41:27 PM

RELATED LOCATION & FLOWLINE MAP

BLUE CHIP 6-22HZ

SECTION 22, TOWNSHIP 5 NORTH, RANGE 67 WEST, 6TH P.M., GREELEY, COLORADO

LOCATION ID	LOCATION NAME	LOCATION NUMBER	OPERATOR NAME
305127	NICK HAGER-65N67W	22SWNW	BLUE CHIP OIL INC
305128	KATIE HAGER-65N67W	22NWNW	BLUE CHIP OIL INC
305209	WIEDEMAN-65N67W	21SWNE	KERR MCGEE OIL & GAS ONSHORE LP
305322	CROISSANT-65N67W	19SESE	KERR MCGEE OIL & GAS ONSHORE LP
305323	CROISSANT-65N67W	19SWSE	KERR MCGEE OIL & GAS ONSHORE LP
305367	BETZ-65N67W	30NENE	KERR MCGEE OIL & GAS ONSHORE LP
305406	THE CHAMP-65N67W	22SENW	BLUE CHIP OIL INC
305407	MARY HAGER-65N67W	22NENW	BLUE CHIP OIL INC
305408	JEAN ANN-65N67W	22CNW	BLUE CHIP OIL INC
305690	BLEHM N-65N67W	26NENW	NOBLE ENERGY INC
305875	BETZ-65N67W	30NENE	KERR MCGEE OIL & GAS ONSHORE LP
305993	GOLDBERG N-65N67W	14NESW	NOBLE ENERGY INC
306023	EDWARDS-65N67W	15NWSE	KERR MCGEE OIL & GAS ONSHORE LP
306024	EDWARDS-65N67W	15NESW	KERR MCGEE OIL & GAS ONSHORE LP
306059	UIV-65N67W	20NWNW	KERR MCGEE OIL & GAS ONSHORE LP
306109	KINZER-65N67W	23NWNW	NOBLE ENERGY INC
306656	KINZER-65N67W	28NWNW	PDC ENERGY INC
306662	HANKINS-65N67W	20SESE	PDC ENERGY INC
306663	HANKINS-65N67W	20NESE	PDC ENERGY INC
306729	WIEDEMAN-65N67W	21SESE	PDC ENERGY INC
306730	WIEDEMAN-65N67W	21NWSE	PDC ENERGY INC
306731	WIEDEMAN-65N67W	21NESE	PDC ENERGY INC
306732	WIEDEMAN-65N67W	21SWSE	PDC ENERGY INC
306751	CALLEN-USX N-65N67W	27NWNW	KERR MCGEE OIL & GAS ONSHORE LP
310048	DEWALT-65N67W	19NESE	KERR MCGEE OIL & GAS ONSHORE LP
310191	L & T-65N67W	22SENE	PDC ENERGY INC
310766	DGDG-65N67W	28NWNW	PDC ENERGY INC
317495	HANKINS-65N67W	22SWSE	PDC ENERGY INC
319345	BLEHM-65N67W	26NWNW	NOBLE ENERGY INC
319420	KINZER-65N67W	28SWNW	PDC ENERGY INC
319535	WIEDEMAN-65N67W	21NESW	PDC ENERGY INC
322591	ANDREWS-65N67W	22SWSW	BLUE CHIP OIL INC
322595	CHALLENGER-65N67W	29NWNW	KP KAUFFMAN COMPANY INC
329504	WIEDEMAN, *G-65N67W	21NENE	KERR MCGEE OIL & GAS ONSHORE LP
330259	HSR-NIES-65N67W	15SWSE	KERR MCGEE OIL & GAS ONSHORE LP
330282	SCOTT-65N67W	27SENE	KERR MCGEE OIL & GAS ONSHORE LP
330421	HSR-LEONARD-65N67W	15NESW	KERR MCGEE OIL & GAS ONSHORE LP

LOCATION ID	LOCATION NAME	LOCATION NUMBER	OPERATOR NAME
330426	HSR-NIES-65N67W	15NWSE	KERR MCGEE OIL & GAS ONSHORE LP
330427	HSR-NIES-65N67W	15SESE	KERR MCGEE OIL & GAS ONSHORE LP
330482	HSR-LEONARD-65N67W	15NWSW	KERR MCGEE OIL & GAS ONSHORE LP
330483	HSR-LEONARD-65N67W	15SWSW	KERR MCGEE OIL & GAS ONSHORE LP
330668	BLEHM N-65N67W	26NENW	NOBLE ENERGY INC
330707	BLEHM N-65N67W	26SWNW	PDC ENERGY INC
330711	HSR-KINZER-65N67W	23NWNW	NOBLE ENERGY INC
330713	HSR-KINZER-65N67W	23SENW	NOBLE ENERGY INC
330989	HANKINS-65N67W	22SESE	PDC ENERGY INC
331006	HANKINS-65N67W	22NESE	PDC ENERGY INC
331319	ROGER-65N67W	28SWNE	PDC ENERGY INC
331320	HELEN-65N67W	28SENE	PDC ENERGY INC
331643	HANKINS-65N67W	22NWSE	PDC ENERGY INC
331644	HANKINS-65N67W	22SENE	PDC ENERGY INC
331645	HANKINS-65N67W	22NWNW	PDC ENERGY INC
331646	HANKINS-65N67W	22SWNE	PDC ENERGY INC
331692	GOLDBERG N-65N67W	14SWSW	NOBLE ENERGY INC
331703	GOLDBERG N-65N67W	14SESW	NOBLE ENERGY INC
331815	G. WIEDEMAN-65N67W	21SENE	KERR MCGEE OIL & GAS ONSHORE LP
331955	HANKINS-65N67W	22NENE	PDC ENERGY INC
332084	ANDREWS-65N67W	22NWSW	BLUE CHIP OIL INC
332093	ZIMMERMAN-65N67W	20NENW	KERR MCGEE OIL & GAS ONSHORE LP
332539	WIEDEMAN-65N67W	21SWSW	PDC ENERGY INC
332602	CROISSANT-65N67W	20SESW	KERR MCGEE OIL & GAS ONSHORE LP
332621	UIV-65N67W	20SENW	KERR MCGEE OIL & GAS ONSHORE LP
332801	KINZER-65N67W	28SWNW	PDC ENERGY INC
332972	HSR-LEONARD-65N67W	15SESW	KERR MCGEE OIL & GAS ONSHORE LP
333044	HANKINS-65N67W	17SESE	PDC ENERGY INC
426275	Hankins	31-22H Pad	PDC ENERGY INC
446615	CHALLENGER	1-32	KP KAUFFMAN COMPANY INC
464926	WIEDEMAN-65N67W	21SWSW	PDC ENERGY INC
464927	WIEDEMAN-65N67W	21NWSW	PDC ENERGY INC
464929	WIEDEMAN-65N67W	21SWNW	PDC ENERGY INC
471769	Williams 28-2/ Helen 1 Roger 1/	DGDG 28C	PDC ENERGY INC
471918	Mellon	28-4 & 28N	PDC ENERGY INC
472390	Hankins 31-22H; 22-11, 12, 13,	14; LT 22-15	PDC ENERGY INC
472407	Edwards 34-16U, 16DU	Hardman 5	PDC ENERGY INC
472447	Wiedeman	33, 43-21 U	PDC ENERGY INC

NOTE: THIS MAP IS A COMPILATION OF PUBLICLY AVAILABLE DATA. THE ACCURACY AND COMPLETENESS OF SAID DATA HAS NOT BEEN VERIFIED BY 609 CONSULTING, LLC. EXISTING CONDITIONS MAY DIFFER FROM WHAT IS SHOWN.

Kerr-McGee Oil &
Gas Onshore LP

1099 18th Street
Denver, Colorado 80202



609
Consulting, LLC

LOVELAND OFFICE
6706 North Franklin Avenue
Loveland, Colorado 80538
Phone 970-776-4331

SHERIDAN OFFICE
1095 Saberton Avenue
Sheridan, Wyoming 82801
Phone 307-674-0609



1" = 2,000ft
0 1,000 2,000
NAD83 CO-Nft

Sheet:
2 of 2

Drawn by: BB
Revised: AK

Date: 4 Nov 2021
Date: 11 Feb 2022