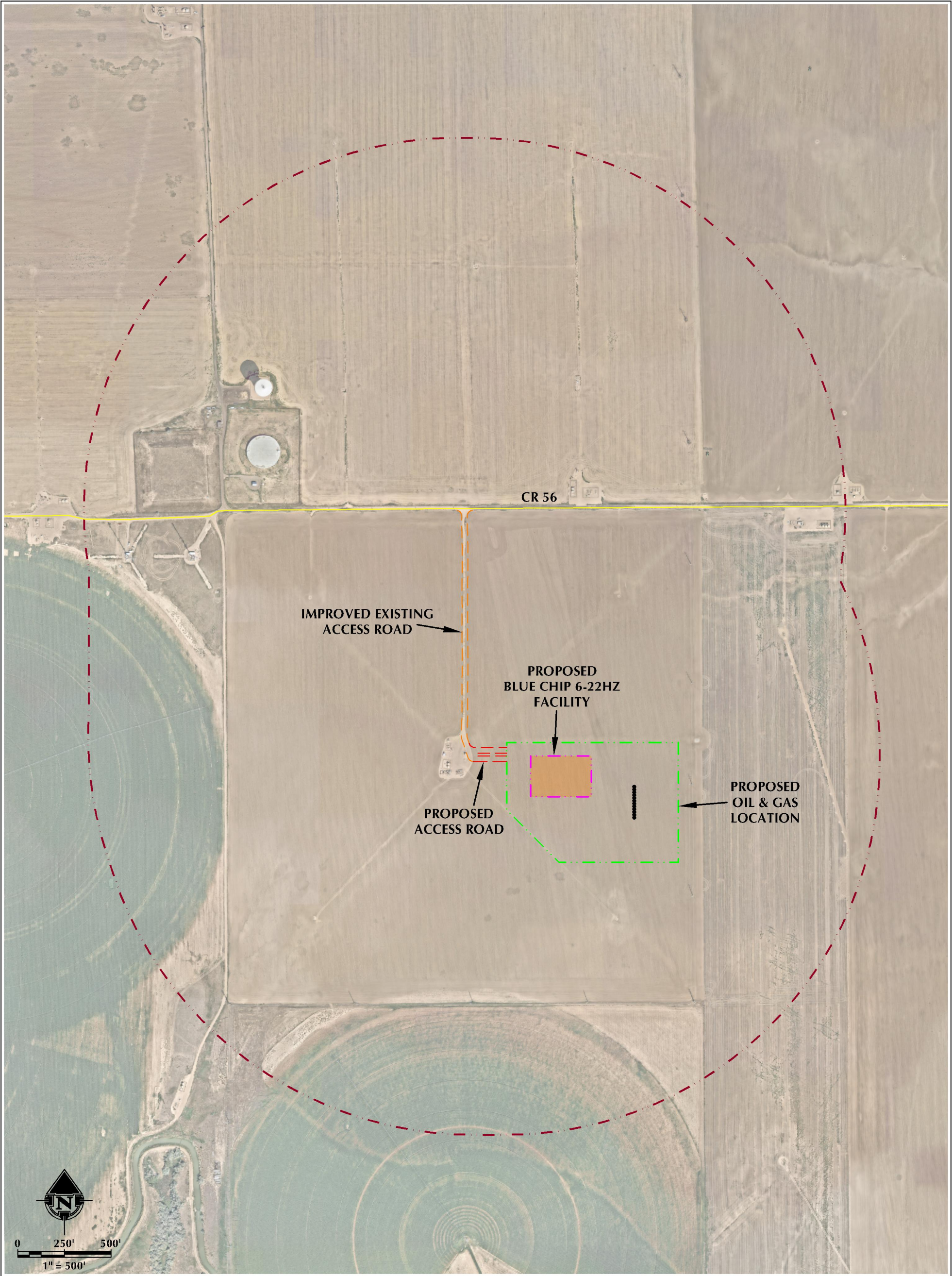


BLUE CHIP 6-22HZ ACCESS MAP

E1/2 NW1/4 SECTION 22, TOWNSHIP 5 NORTH, RANGE 67 WEST, 6TH P.M., GREELEY, COLORADO



LEGEND

- PROPOSED WELL
- IMPROVED EXISTING ACCESS ROAD
- - - PROPOSED ACCESS ROAD
- PUBLIC ROAD
- - - PROPOSED OIL & GAS LOCATION
- - - 2000' ACCESS BUFFER
- RESIDENTIAL BUILDING UNIT
- NON-RESIDENTIAL BUILDING UNIT
- PROPOSED FACILITY

**INTERSECTION OF
ACCESS ROAD AND CR 56**

LATITUDE: 40.392449°

LONGITUDE: -104.883527°



609 CONSULTING, LLC
LOVELAND OFFICE
6706 North Franklin Avenue
Loveland, Colorado 80538
Phone: 970-776-4331
SHERIDAN OFFICE
1095 Saberton Avenue
Sheridan, Wyoming 82801
Phone: 307-674-9609

DATE SURVEYED: 8/18/21
DATE: 11/4/21
DRAFTER: GLK
REVISED: 2/11/22

DATA SOURCES & NOTES:
- AERIAL COURTESY OF NEARMAP US, INC.

PREPARED FOR:
Kerr-McGee Oil & Gas Onshore LP