

Inspection Photos

Location Name: TEP ROCKY MOUNTAIN LLC WATSON RANCH PAD /24B-17-07-95

Location ID: 413055



Photo #7247 from entrance to location.



Photo #7248 from entrance to location.

Inspection Photos

Location Name: TEP ROCKY MOUNTAIN LLC WATSON RANCH PAD /24B-17-07-95

Location ID: 413055



Network: Jul 22, 2022 at 12:31:12 PM MD
Local: Jul 22, 2022 at 12:31:12 PM MD

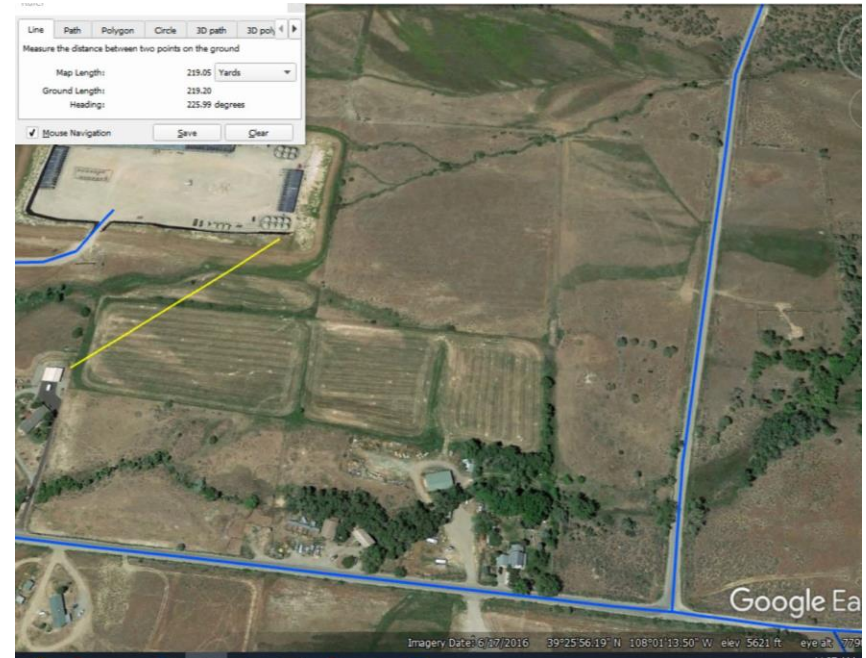


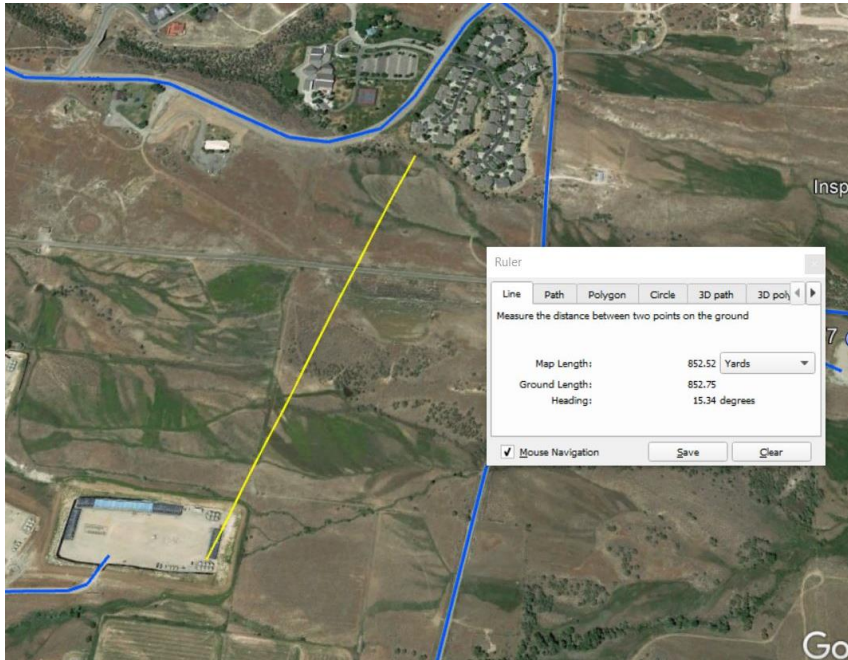
Photo #7249 from entrance to location.

Approximate distance to nearest residents 220 yards.

Inspection Photos

Location Name: TEP ROCKY MOUNTAIN LLC WATSON RANCH PAD /24B-17-07-95

Location ID: 413055



Approximate distance to nearest subdivision.



Photo #7252 Multiple places with debris on location.

Inspection Photos

Location Name: TEP ROCKY MOUNTAIN LLC WATSON RANCH PAD /24B-17-07-95

Location ID: 413055



Photo #7280 Multiple places with debris on location.



Photo #7271 Unused equipment on location.

Inspection Photos

Location Name: TEP ROCKY MOUNTAIN LLC WATSON RANCH PAD /24B-17-07-95

Location ID: 413055

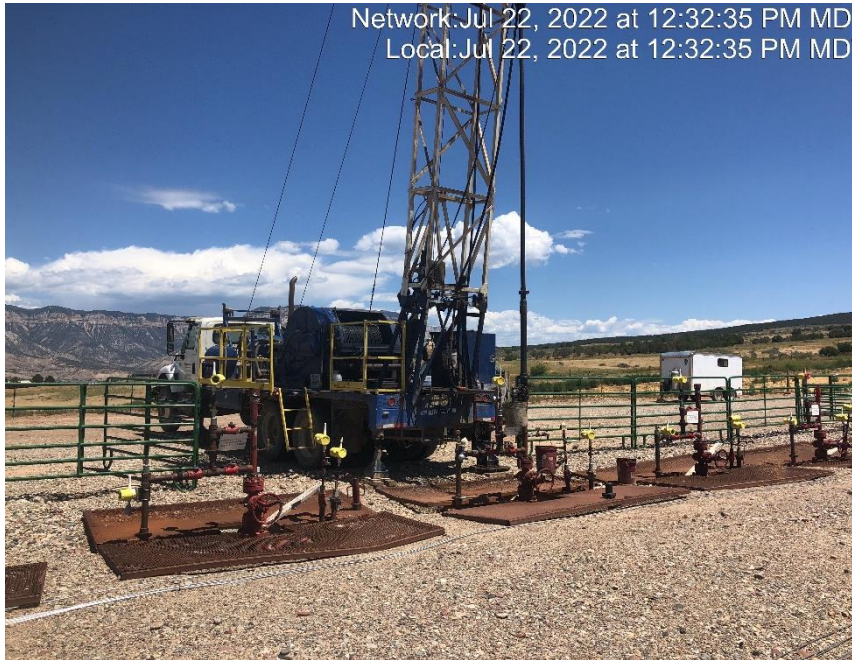


Photo #7250 Swabbing truck rigged up on well 23A-17-07.



Photo #7253 Swabbing truck rigged up on well 23A-17-07

Inspection Photos

Location Name: TEP ROCKY MOUNTAIN LLC WATSON RANCH PAD /24B-17-07-95

Location ID: 413055



Photo #7255 Thief hatches opened for depressurizing tank battery.



Photo #7256 Thief hatches opened for depressurizing tank battery.

Inspection Photos

Location Name: TEP ROCKY MOUNTAIN LLC WATSON RANCH PAD /24B-17-07-95

Location ID: 413055



Photo #7358 Vent line on condensate side of tank battery.



Photo #7260 Vent line on Produced water side of tank battery.

Inspection Photos

Location Name: TEP ROCKY MOUNTAIN LLC WATSON RANCH PAD /24B-17-07-95

Location ID: 413055



Photo #7262 Vent line from produced water tank to condensate tanks no isolation.



Photo #7263 Condensate tanks and AIRS ID.

Inspection Photos

Location Name: TEP ROCKY MOUNTAIN LLC WATSON RANCH PAD /24B-17-07-95

Location ID: 413055



Photo #7264 Condensate tanks, AIRS ID and fluid knock out.



Photo #7264 Condensate tanks.

Inspection Photos

Location Name: TEP ROCKY MOUNTAIN LLC WATSON RANCH PAD /24B-17-07-95

Location ID: 413055



Photo #7268 Produced water tank dump line.



Photo #7269 Condensate dump line.

Inspection Photos

Location Name: TEP ROCKY MOUNTAIN LLC WATSON RANCH PAD /24B-17-07-95

Location ID: 413055



Photo #7270 Vent line coming from tank battery to combustors.



Photo #7272 combustors isolated from tank battery.

Inspection Photos

Location Name: TEP ROCKY MOUNTAIN LLC WATSON RANCH PAD /24B-17-07-95

Location ID: 413055



Photo #7273 Combustor isolated from tank battery.



Photo #7282 Pilot supply gas shut.

Inspection Photos

Location Name: TEP ROCKY MOUNTAIN LLC WATSON RANCH PAD /24B-17-07-95

Location ID: 413055



Photo #7281 Profire 2100 does not appear to be on.



Photo #7276 23A-17-07 well blowdown line open to produced water tank and isolated from the separator.