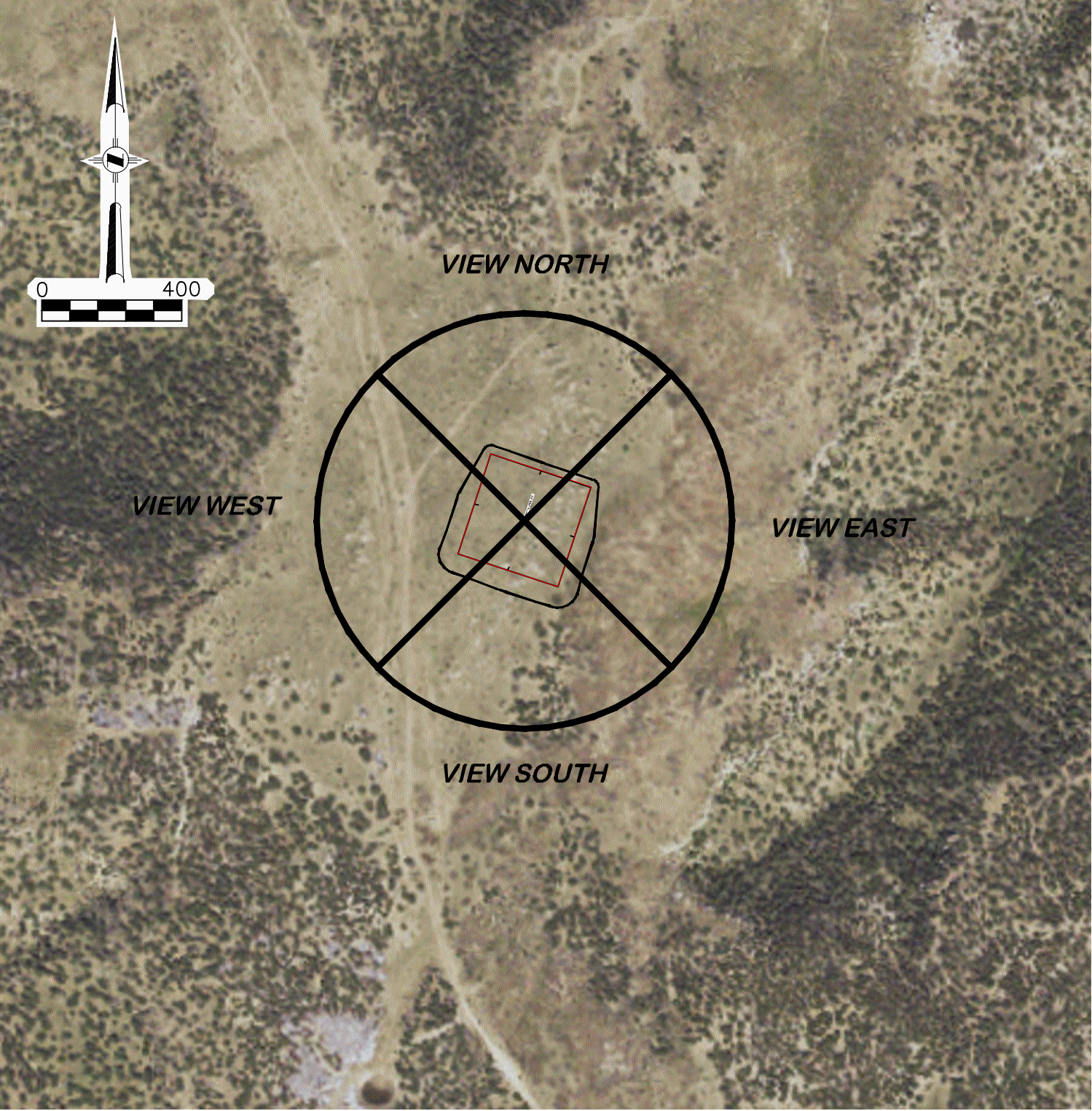


**AERIAL LOCATION PHOTO**



**AERIAL PHOTO SOURCE**  
AERIAL PHOTOGRAMMETRY  
TAKEN FROM BING IMAGES

**PAD LOCATION:**  
LAT: N 37.440863  
LONG: W 103.465880

**LOCATION PHOTOS**



**WELL LOCATION LOOKING NORTH**  
7/4/2021



**WELL LOCATION LOOKING SOUTH**  
7/4/2021



**WELL LOCATION LOOKING EAST**  
7/4/2021



**WELL LOCATION LOOKING WEST**  
7/4/2021

**STATE 16 SWSE 3054**

<div><div><div>DRG</div><div>(307) 362-5028</div></div><div><div>RIFFIN &amp; ASSOCIATES, INC.</div><div>1414 ELK ST., ROCK SPRINGS, WY 82901</div></div></div>	
DRAWN: 7/20/2021 - DEH	SCALE: NONE
REVISED: 3/21/22 - JMB	DRG JOB No. 22139
MISC. REVISIONS	304b(4) LOC PIC

**LOCATION PICTURES**

**BNL (ENTERPRISE) INC.**  
**STATE 16 SWSE 3054**  
**SWSE, SECTION 16, T. 30 S., R. 54 W., 6th P.M.,**  
**LAS ANIMAS COUNTY, COLORADO**