



RADIAL CEMENT BOND LOG

Company ANADARKO PERTO. CORP.
Well VAN PORTFLIET 6-10A
Field WATTENBERG
County WELD
State CO

Location: AP1 #: 05-123-19900
 LAT: 40.154698
 LONG: -104.651826
 SEC 10 TWP 2N RGE 65W
Permanent Datum GL Elevation 4853
Log Measured From KB
Drilling Measured From KB
Other Services N/A
Elevation K.B. 4869
 D.F. 4868
 G.L. 4853

Date 05-20-2021
Run Number ONE
Depth Driller 7931'
Depth Logger 2625'
Bottom Logged Interval 2524'
Top Log Interval SURFACE
Open Hole Size 7.875"
Type Fluid H2O
Density / Viscosity 8.3-#
Max. Recorded Temp. 111.7°F
Estimated Cement Top SEE LOG
Time Well Ready ROA
Time Logger on Bottom 13:15 P.M.
Equipment Number 8050
Location WINDSOR
Recorded By D.DELAP
Witnessed By V.I.DEFONSO

Run Number	Borehole Record		Tubing Record				
	Bit	From	To	Size	Weight	From	To
Casing Record							
Surface String		8.625"		24#		SURFACE	Bottom
Prot. String							
Production String		4.5"		11.6#		SURFACE	7910'
Liner							

<<< Fold Here >>>

All interpretations are opinions based on inferences from electrical or other measurements and we cannot and do not guarantee the accuracy or correctness of any interpretation, and we shall not, except in the case of gross or willful negligence on our part, be liable or responsible for any loss, costs, damages, or expenses incurred or sustained by anyone resulting from any interpretation made by any of our officers, agents or employees. These interpretations are also subject to our general terms and conditions set out in our current Price Schedule.

Comments

LOG RAN WITH 0 PSI
FREE PIPE CALLIBRATION PERFORMED AT 570'
SHOP CALLIBRATION PERFORMED ON 5-14-2021
THANK YOU FOR CHOOSING CUTTERS WIRELINE

Calibration Report

Database File 05-123-19900_vanportfliet6-10a_oxy.db
Dataset Pathname pass33
Dataset Creation Thu May 20 13:15:42 2021

Serial Number: FW1304-53
 Tool Model: Probe275
 Performed: (Not Performed)

Calibrator Value: 1.0 GAPI

Background Reading: 0.0 cps
 Calibrator Reading: 1.0 cps

Sensitivity: 1.0000 GAPI/cps

Temperature Calibration Report

Serial Number: FW1304-53
 Tool Model: Probe275
 Performed: Sun Jan 05 18:47:35 2020

	Reference	Reading
Low Reference:	100.00 degF	6258.73
High Reference:	350.00 degF	26472.00
Gain:	0.01	
Offset:	22.59	
Delta Spacing	2	

Segmented Cement Bond Log Calibration Report

Serial Number: FW1905-150
 Tool Model: RBTC3

Calibration Casing Diameter: 4.500 in
 Calibration Depth: 571.025 ft

Master Calibration, performed Thu May 20 13:04:37 2021:

	Raw (v)		Calibrated (mv)		Results	
	Zero	Cal	Zero	Cal	Gain	Offset
3'	0.002	0.727	1.000	81.196	110.701	0.732
CAL	0.002	0.891				
5'	0.002	0.618	1.000	81.196	130.185	0.695
SUM						
S1	0.002	0.677	0.000	81.000	120.165	-0.292
S2	0.002	0.705	0.000	81.000	115.270	-0.284
S3	0.002	0.746	0.000	81.000	108.933	-0.261
S4	0.002	0.779	0.000	81.000	104.298	-0.234
S5	0.002	0.783	0.000	81.000	103.792	-0.246
S6	0.002	0.763	0.000	81.000	106.499	-0.225
S7	0.002	0.724	0.000	81.000	112.225	-0.274
S8	0.003	0.699	0.000	81.000	116.382	-0.294

Internal Reference Calibration, performed (Not Performed):

	Raw (v)		Calibrated (v)		Results	
	Zero	Cal	Zero	Cal	Gain	Offset
CAL	0.000	0.000	0.002	0.891	1.000	0.000

Air Zero Calibration, performed Thu Mar 18 12:23:12 2021:

Raw (v)	Calibrated (v)	Results
---------	----------------	---------

	Zero	Zero	Offset
3'	0.000	0.000	0.000
5'	0.000	0.000	0.000
SUM			
S1	0.000	0.000	0.000
S2	0.000	0.000	0.000
S3	0.000	0.000	0.000
S4	0.000	0.000	0.000
S5	0.000	0.000	0.000
S6	0.000	0.000	0.000
S7	0.000	0.000	0.000
S8	0.000	0.000	0.000

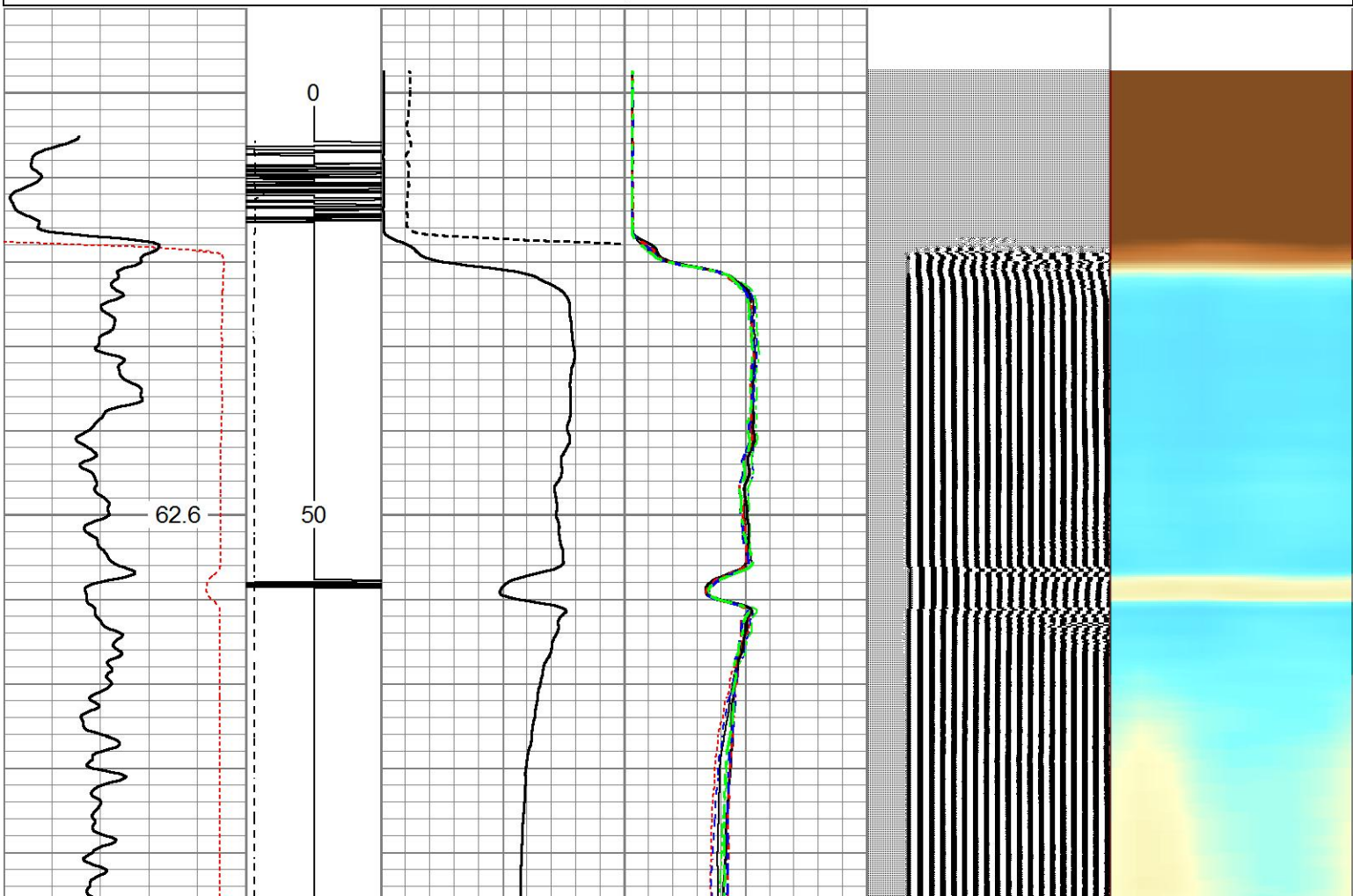
Sensor	Offset (ft)	Schematic	Description	Length (ft)	O.D. (in)	Weight (lb)
ErrCt	15.39		Cable_Head-Standard Standard Cable Head	1.00	1.69	1.00
			RBT-RBTC3 (FW1905-150)	9.62	2.75	90.00
WVFS8	9.02					
WVFS7	9.02					
WVFS6	9.02					
WVFS5	9.02					
WVFS4	9.02					
WVFS3	9.02					
WVFS2	9.02					
WVFS1	9.02					
WVFCAL	9.02					
WVF3FT	9.02					
WVF5FT	8.02					
WVFSYNC	4.77					
DCCL	3.92					
CCL	3.92					
TEMP	3.17					
CP	0.40					

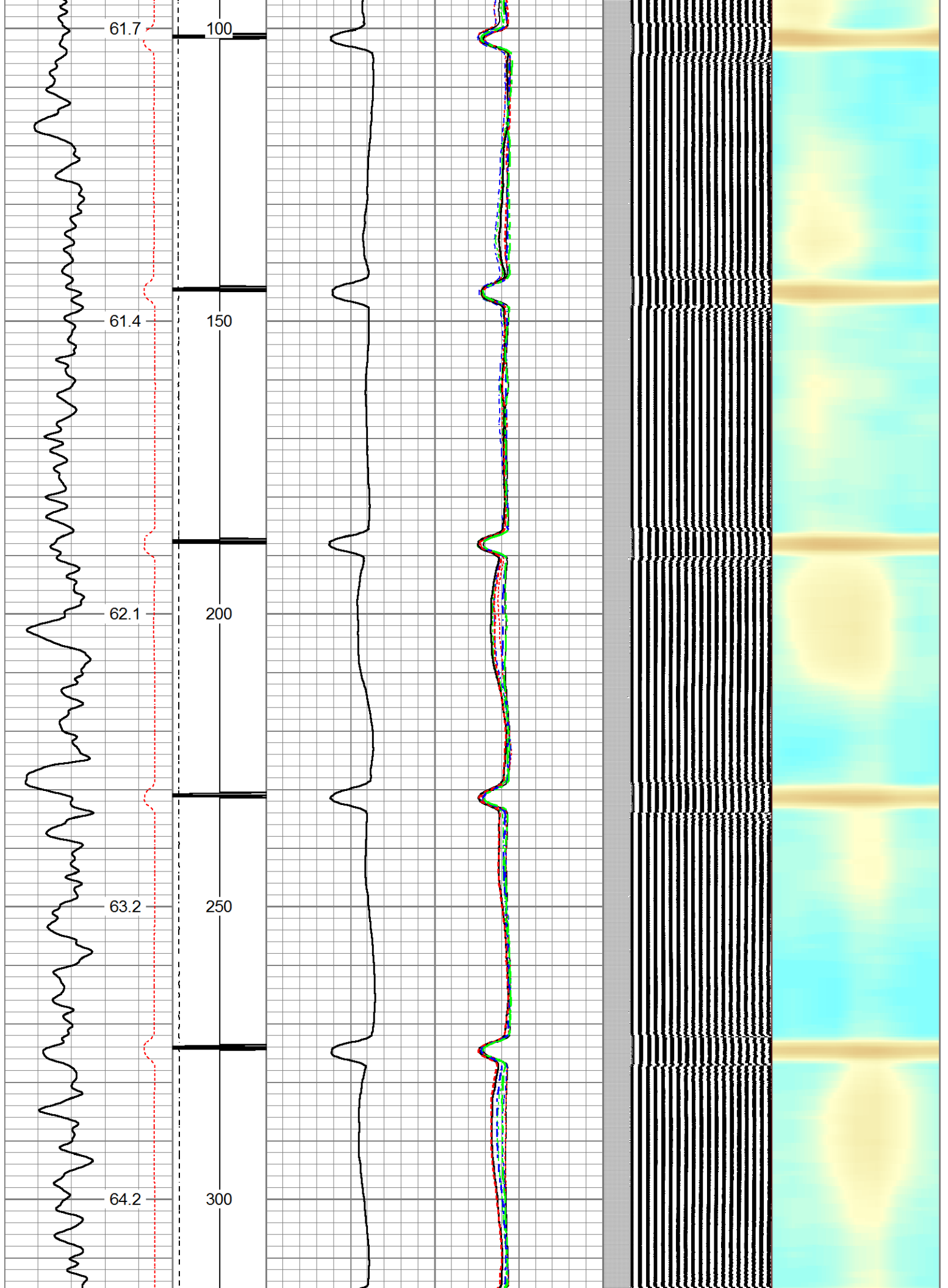
GR	2.42		GCI-Probe275 (FW1304-53) Probe 2 3/4" Gamma Ray CCL w/Temperature	4.77	2.75	40.00
----	------	--	--	------	------	-------

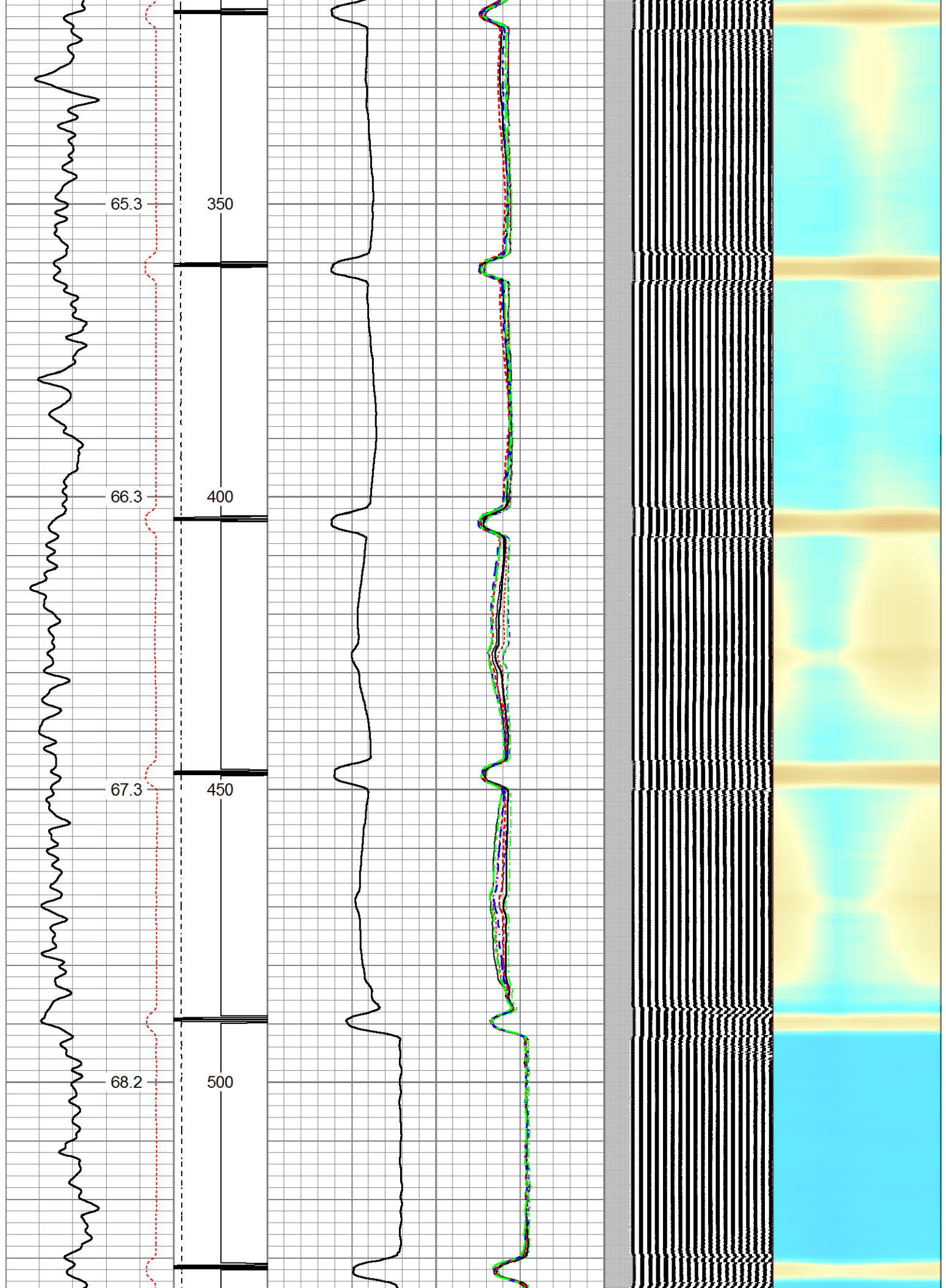
Dataset: 05-123-19900_vanportfliet6-10a_oxy.db: field/well/run1/pass33
 Total length: 15.39 ft
 Total weight: 131.00 lb
 O.D.: 2.75 in

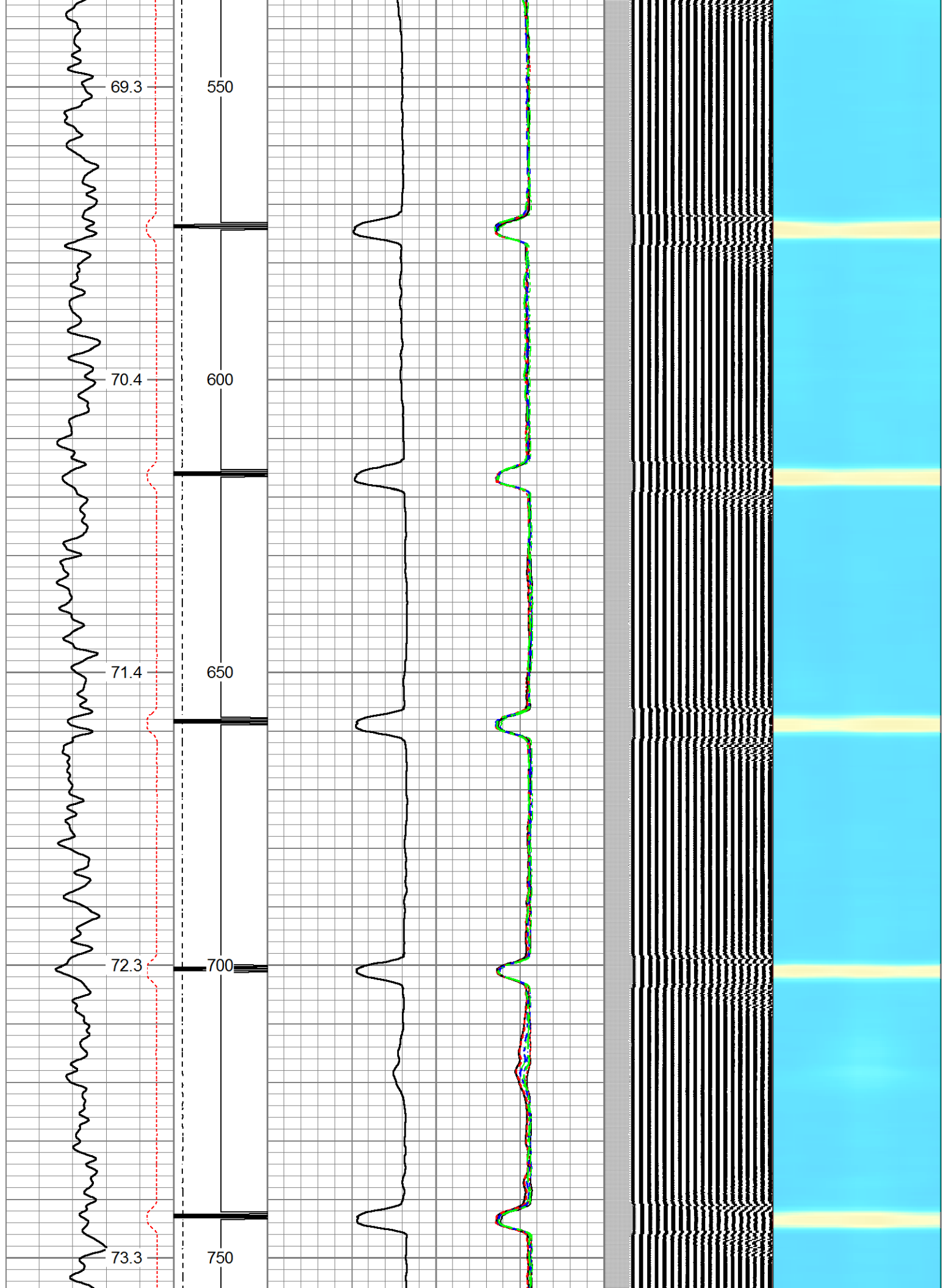
Database File 05-123-19900_vanportfliet6-10a_oxy.db
 Dataset Pathname pass33
 Presentation Format rbt-gct8acc
 Dataset Creation Thu May 20 13:15:42 2021
 Charted by Depth in Feet scaled 1:240

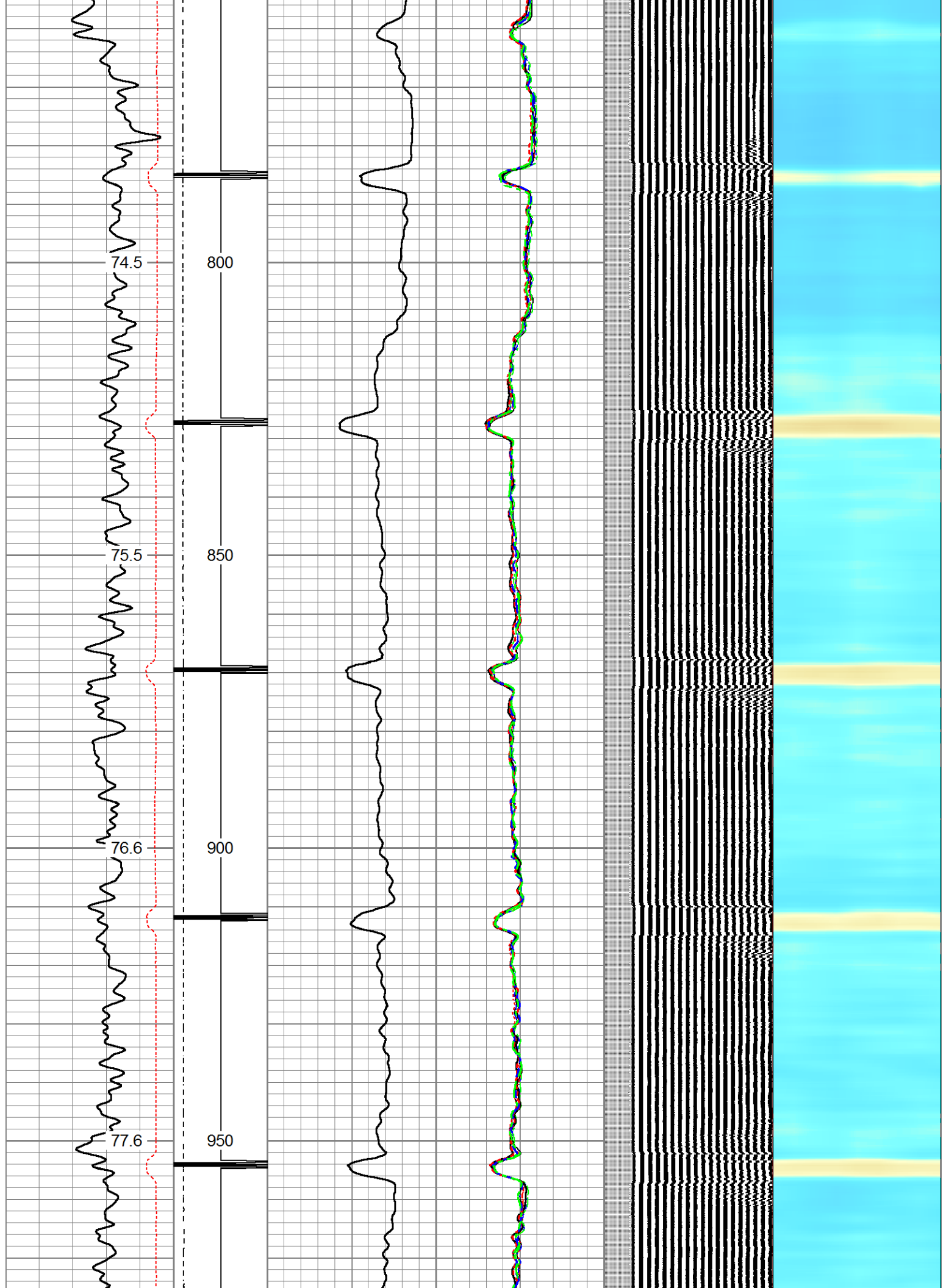
Travel Time	-1 CCL 1 0	AMP (mV) 100	-5 AMPS1 150	200 VDL (usec) 1200	1 Cement Map 8
343 (usec) 243	LTEN 0	AMPx10 (mV) 10	-5 AMPS2 150		
Gamma Ray	0 (lb'3000)		-5 AMPS3 150		
0 (GAPI) 200			-5 AMPS4 150		
TEMP			-5 AMPS5 150		
(degF)			-5 AMPS6 150		
			-5 AMPS7 150		
			-5 AMPS8 150		

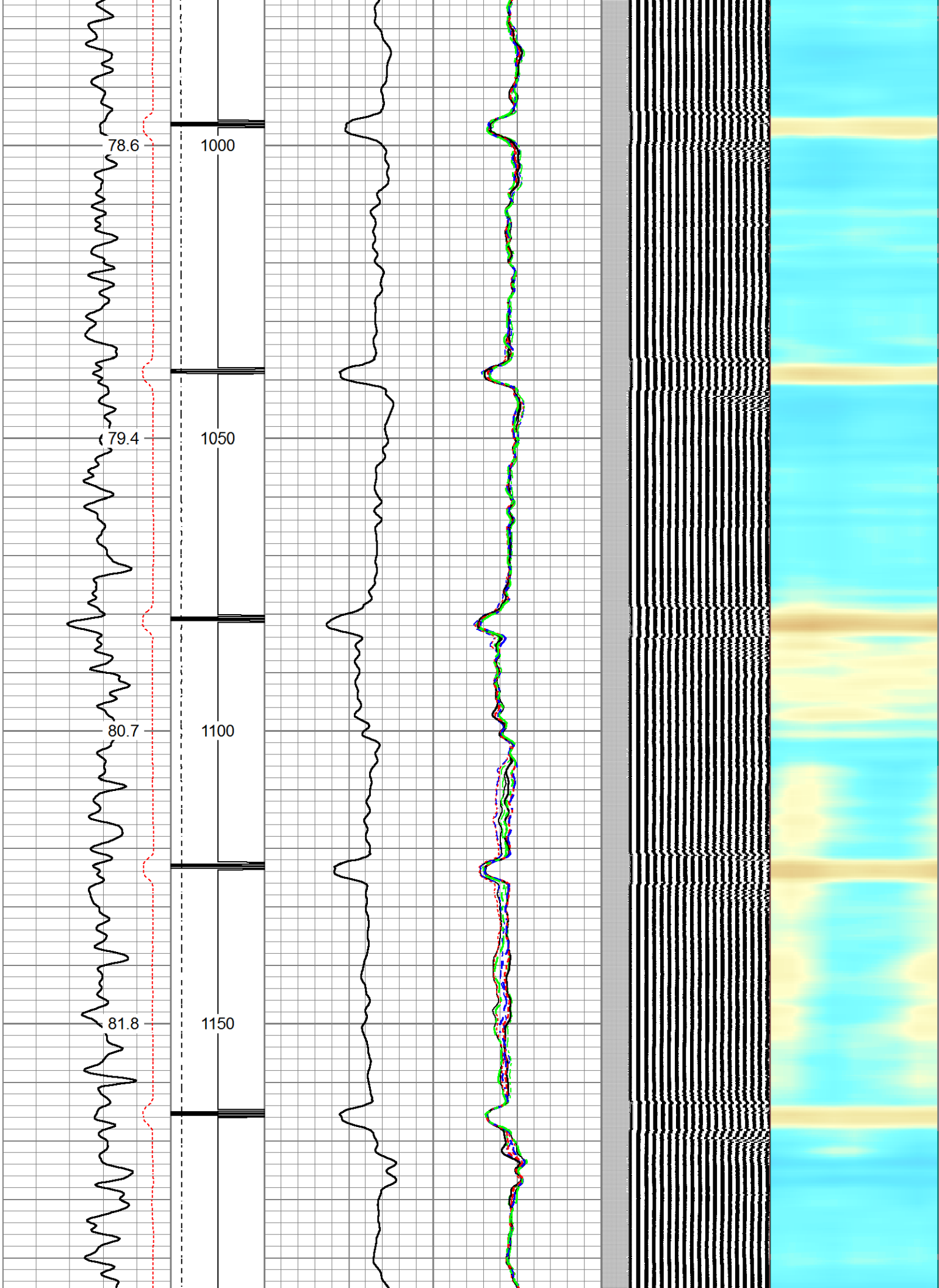


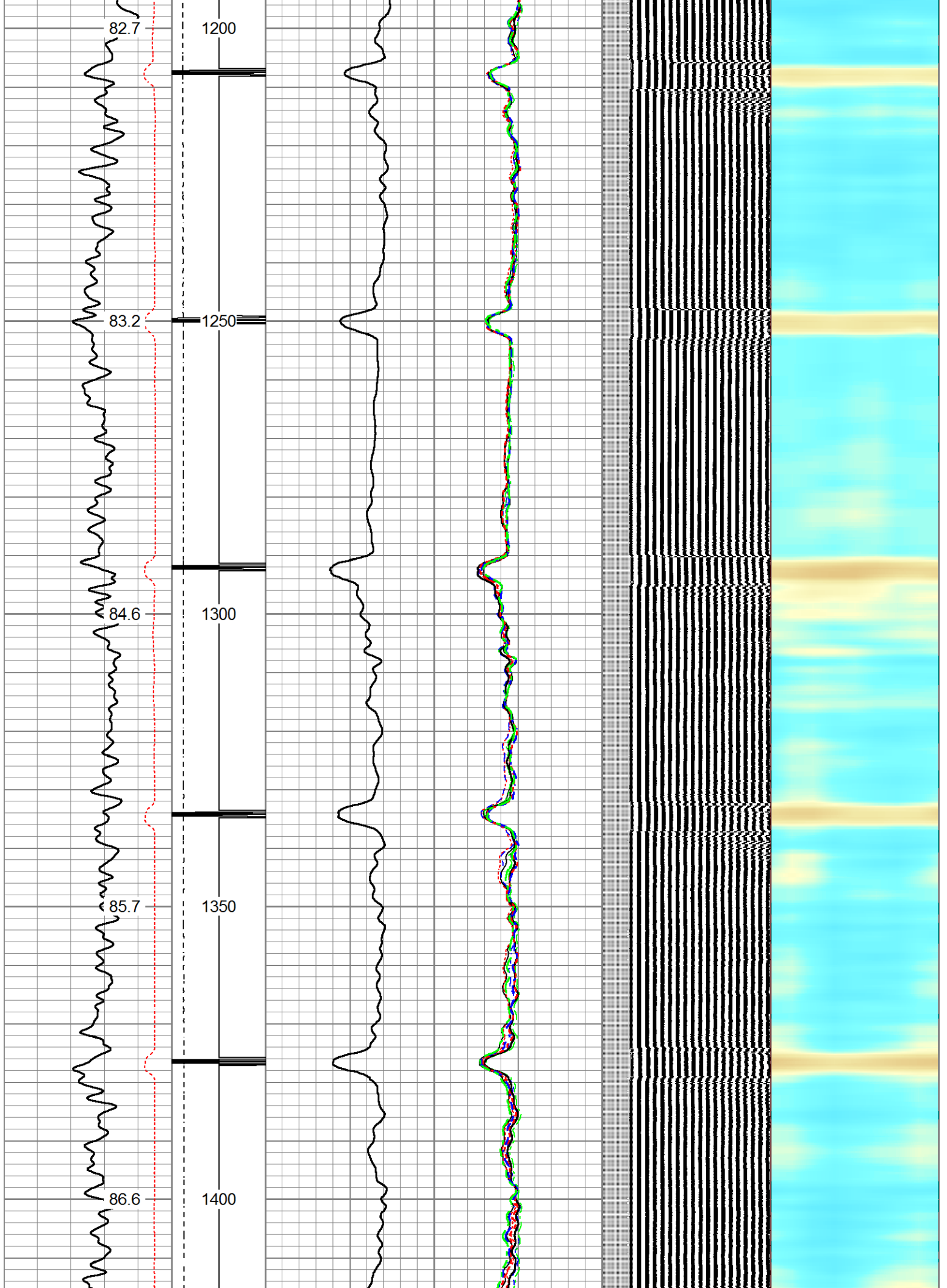


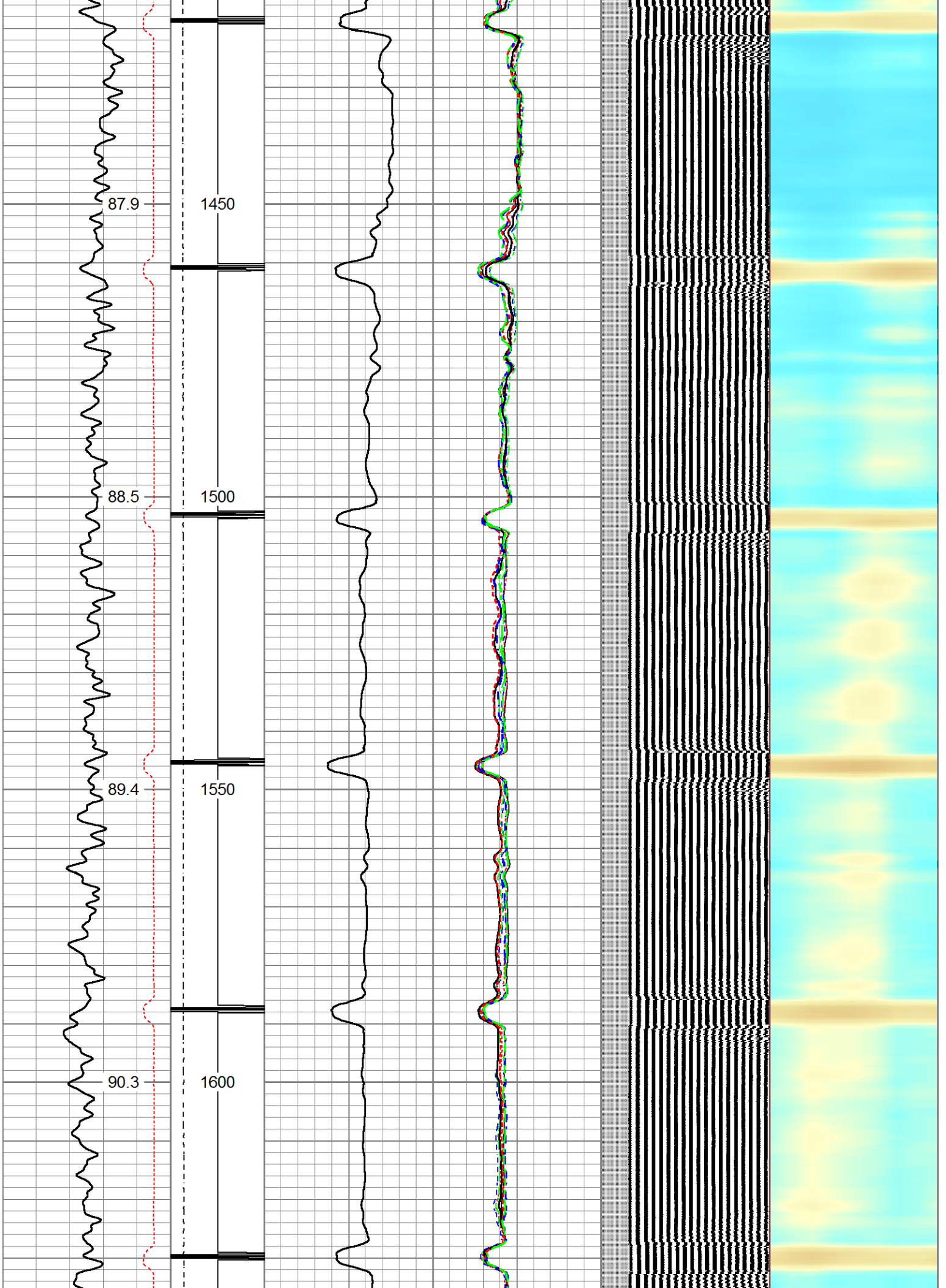


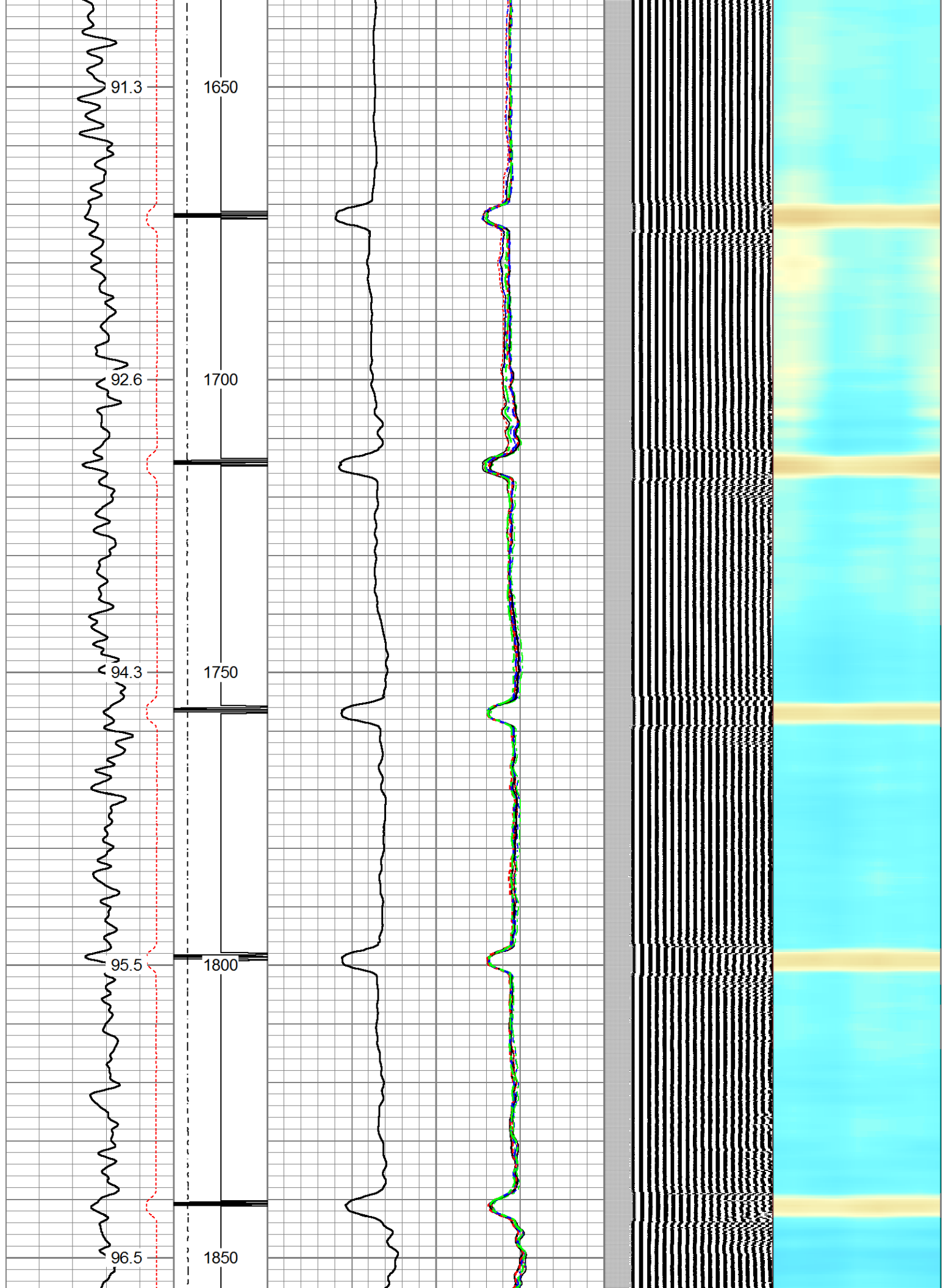


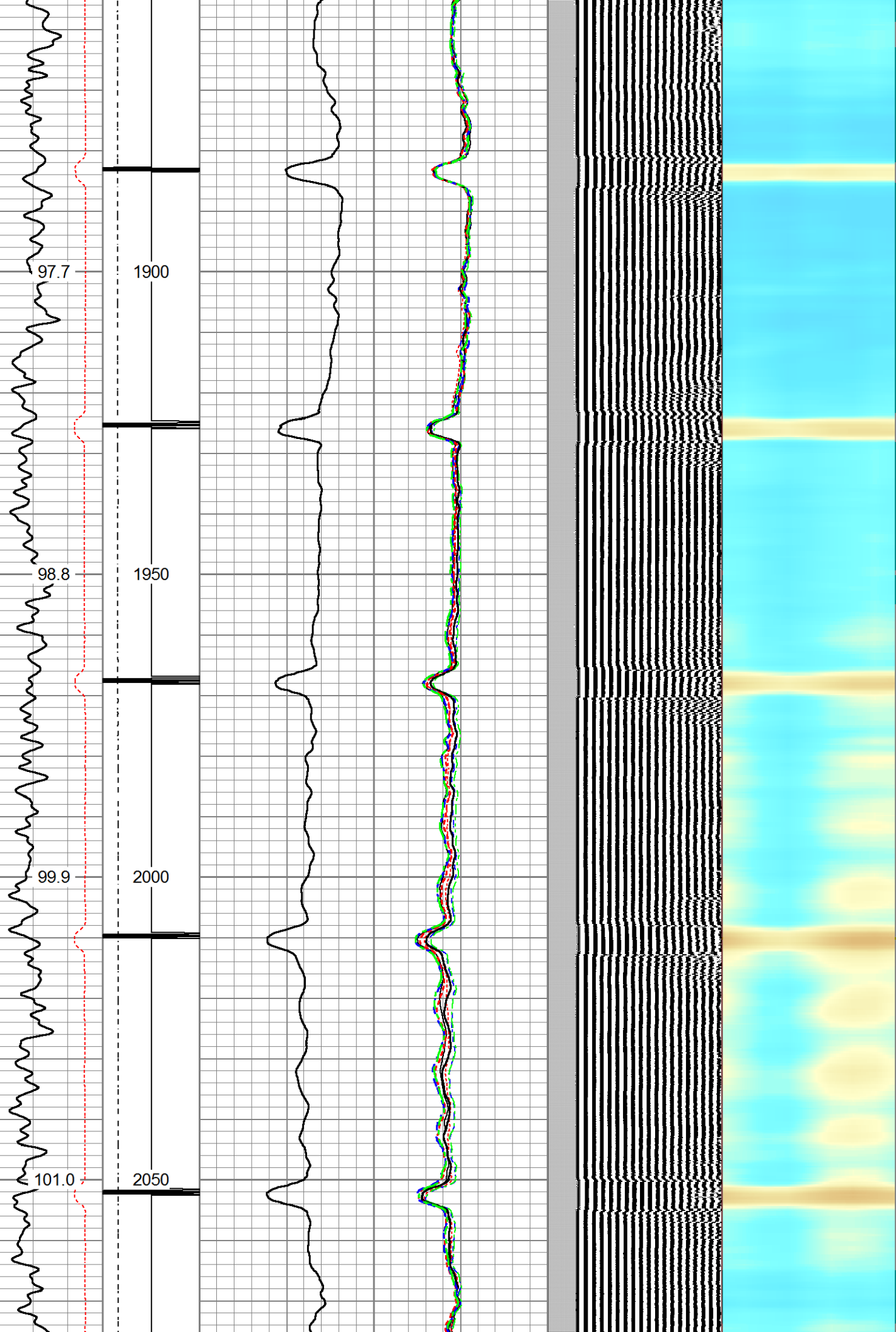


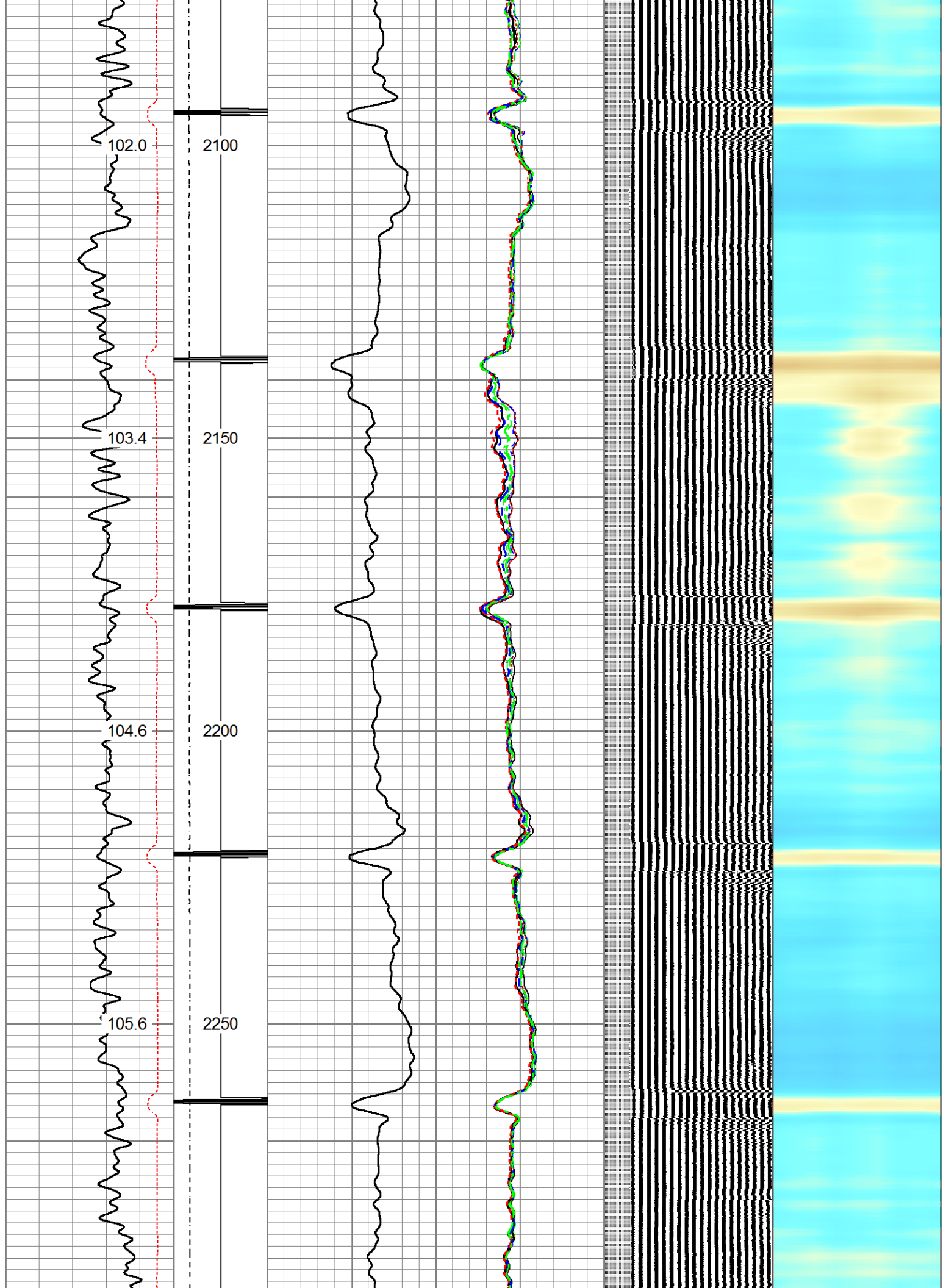


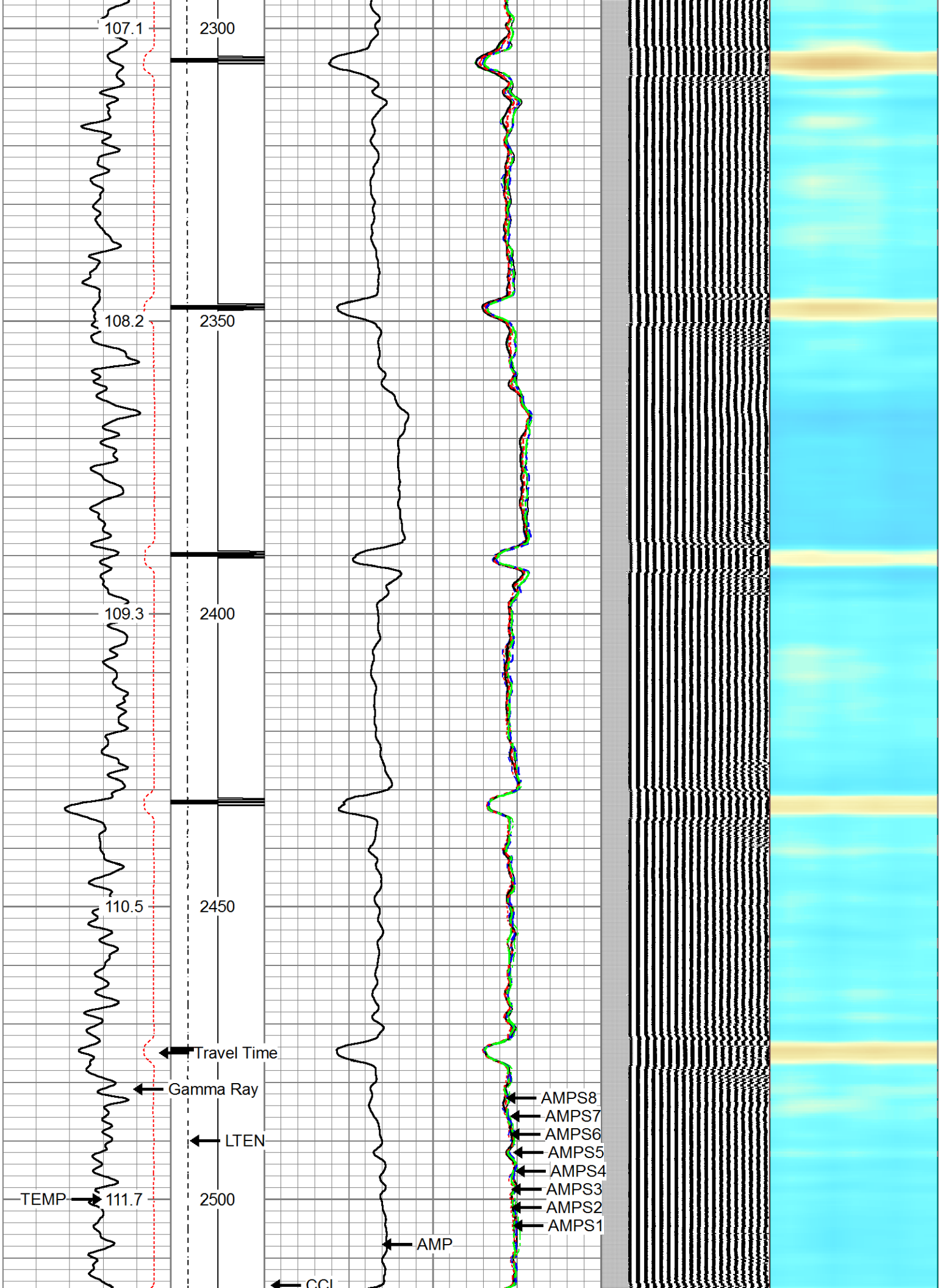


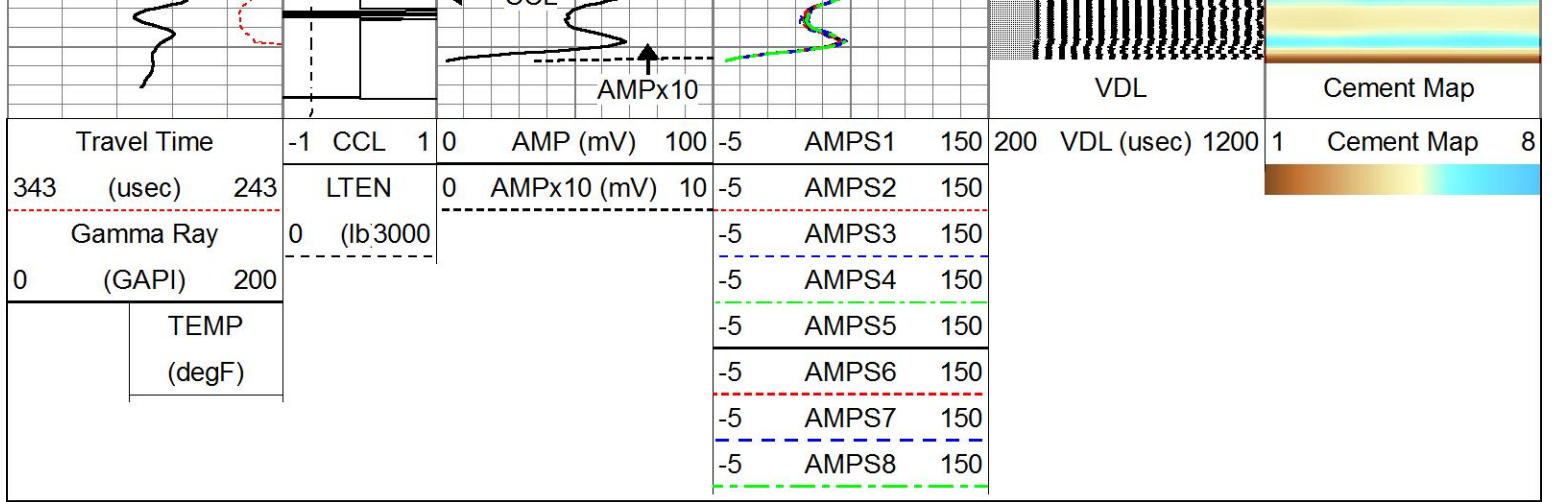












Company **ANADARKO PERTO. CORP.**
 Well **VAN PORTFLIET 6-10A**
 Field **WATTENBERG**
 County **WELD** State **CO**



RADIAL CEMENT BOND LOG