

VERDAD RESOURCES

**WATTENBERG FIELD
2N-64W-28 GEORGENE PAD
GEORGENE 2833-01H**

Plan C

Plan: Design #2

Standard Planning Report

28 July, 2022

Project: WATTENBERG FIELD
Site: 2N-64W-28 GEORGENE PAD
Well: GEORGENE 2833-01H
Wellbore: Plan C
Design: Design #2

VERDAD RESOURCES

CASING DETAILS

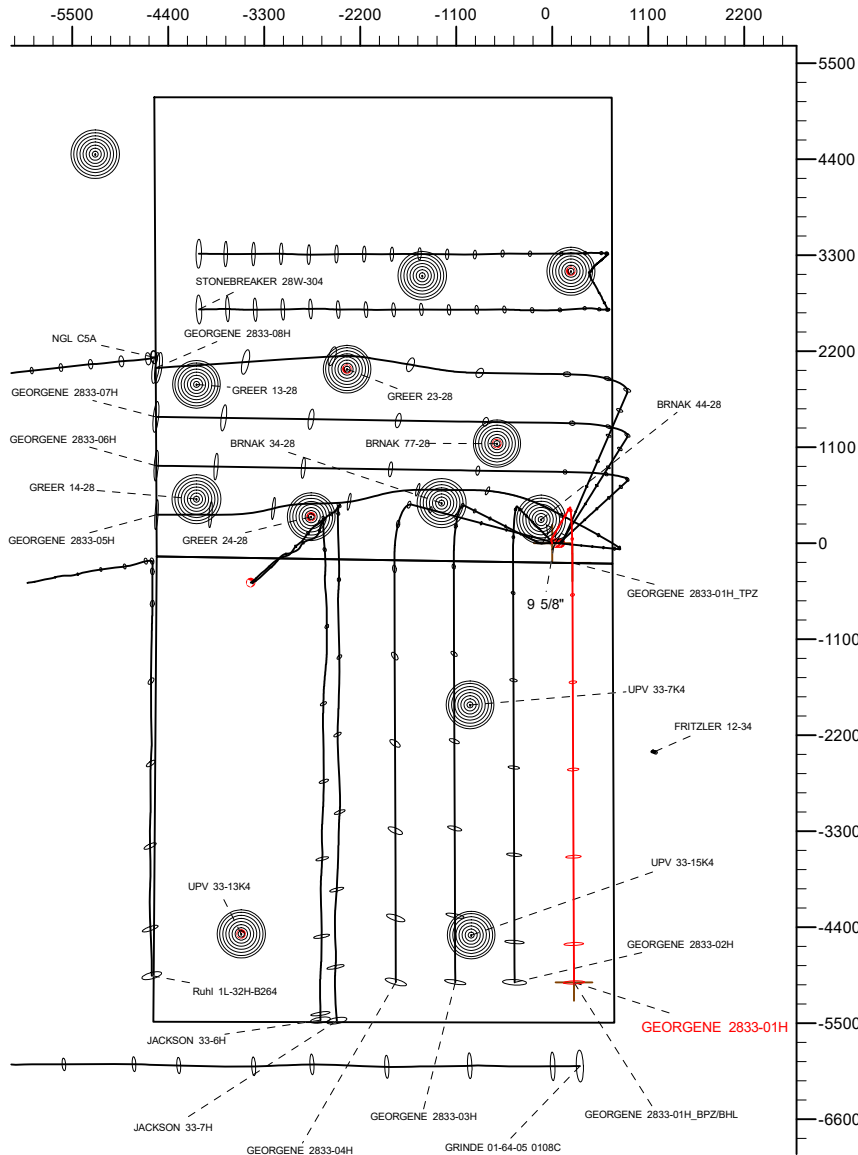
TVD	MD	Name	Size
2328.00	2334.46	9 5/8"	9-5/8

SHL
222' FSL
691' FEL

LP/TPZ
0' FSL
460' FEL

BPZ/BHL
461' FSL
460' FEL

West(-)/East(+) (2200 usft/in)

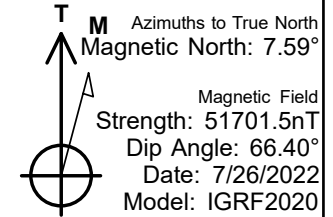
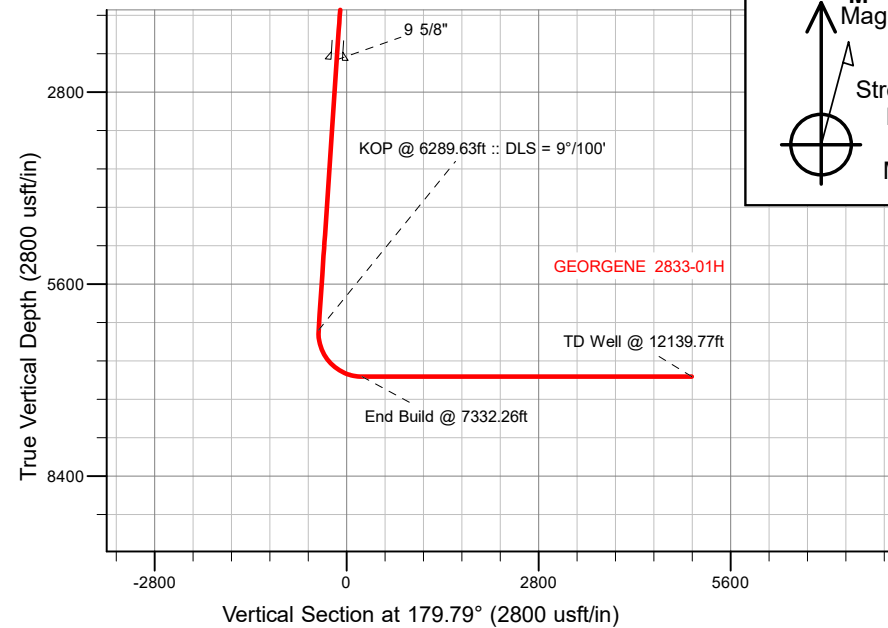


SECTION DETAILS

MD	Inc	Azi	TVD	+N/-S	+E/-W	Dleg	TFace	VSect	Target
0.00	0.00	0.00	0.00	0.00	0.00	0.00	0.00	0.00	
200.00	0.00	0.00	200.00	0.00	0.00	0.00	0.00	0.00	
500.00	6.00	340.00	499.45	14.75	-5.37	2.00	340.00	-14.77	
600.00	6.00	340.00	598.90	24.57	-8.94	0.00	0.00	-24.60	
831.35	4.44	29.98	829.40	43.70	-8.60	2.00	132.70	-43.73	
6289.63	4.44	29.98	6271.30	409.71	202.55	0.00	0.00	-408.97	
7332.26	90.00	179.79	6950.00	-225.38	231.36	9.00	149.74	226.22	
12139.77	90.00	179.79	6950.00	-5032.86	248.84	0.00	0.00	5033.74	GEORGENE 2833-01H_BPZ/BHL

WELLBORE TARGET DETAILS (LAT/LONG)

Name	TVD	Northing	Easting	Latitude	Longitude
GEORGENE 2833-01H_SHL	0.00	1281682.28	3265953.24	40.102696	-104.549238
GEORGENE 2833-01H_TPZ	6950.00	1281459.47	3266187.02	40.102077	-104.548411
GEORGENE 2833-01H_BPZ/BHL	6950.00	1276652.38	3266256.03	40.088880	-104.548348



WELL DETAILS: GEORGENE 2833-01H

GL = 5018'

RKB = 24' @ 5042.00usft (RIG)

Plan: Design #2 (GEORGENE 2833-01H/Plan C)

Date: 7/28/2022

Planning Report

Database:	EDM 5000.16 Single User Db	Local Co-ordinate Reference:	Well GEORGENE 2833-01H
Company:	VERDAD RESOURCES	TVD Reference:	RKB = 24' @ 5042.00usft (RIG)
Project:	WATTENBERG FIELD	MD Reference:	RKB = 24' @ 5042.00usft (RIG)
Site:	2N-64W-28 GEORGENE PAD	North Reference:	True
Well:	GEORGENE 2833-01H	Survey Calculation Method:	Minimum Curvature
Wellbore:	Plan C		
Design:	Design #2		

Project	WATTENBERG FIELD		
Map System:	US State Plane 1983	System Datum:	Mean Sea Level
Geo Datum:	North American Datum 1983		
Map Zone:	Colorado Northern Zone		

Site	2N-64W-28 GEORGENE PAD			
Site Position:		Northing:	1,281,723.49 usft	Latitude: 40.102807
From:	Lat/Long	Easting:	3,266,028.51 usft	Longitude: -104.548967
Position Uncertainty:	0.00 usft	Slot Radius:	13-3/16 "	

Well	GEORGENE 2833-01H			
Well Position	+N/-S	0.00 usft	Northing:	1,281,682.28 usft
	+E/-W	0.00 usft	Easting:	3,265,953.24 usft
Position Uncertainty		3.28 usft	Wellhead Elevation:	usft
Grid Convergence:		0.61 °	Ground Level:	5,018.00 usft

Wellbore	Plan C				
Magnetics	Model Name	Sample Date	Declination (°)	Dip Angle (°)	Field Strength (nT)
	IGRF202013	7/26/2022	7.59	66.40	51,701.45495761

Design	Design #2				
Audit Notes:					
Version:		Phase:	PLAN	Tie On Depth:	0.00
Vertical Section:		Depth From (TVD) (usft)	+N/-S (usft)	+E/-W (usft)	Direction (°)
		0.00	0.00	0.00	179.79

Plan Survey Tool Program		Date	7/28/2022		
Depth From (usft)	Depth To (usft)	Survey (Wellbore)	Tool Name	Remarks	
1	0.00	2,328.00	Design #2 (Plan C)	ISCWSA MWD	
				Fixed:v2:standard declination	
2	2,328.00	12,139.77	Design #2 (Plan C)	ISCWSA MWD	
				Fixed:v2:standard declination	

Planning Report

Database:	EDM 5000.16 Single User Db	Local Co-ordinate Reference:	Well GEORGENE 2833-01H
Company:	VERDAD RESOURCES	TVD Reference:	RKB = 24' @ 5042.00usft (RIG)
Project:	WATTENBERG FIELD	MD Reference:	RKB = 24' @ 5042.00usft (RIG)
Site:	2N-64W-28 GEORGENE PAD	North Reference:	True
Well:	GEORGENE 2833-01H	Survey Calculation Method:	Minimum Curvature
Wellbore:	Plan C		
Design:	Design #2		

Plan Sections										
Measured Depth (usft)	Inclination (°)	Azimuth (°)	Vertical Depth (usft)	+N/-S (usft)	+E/-W (usft)	Dogleg Rate (°/100usft)	Build Rate (°/100usft)	Turn Rate (°/100usft)	TFO (°)	Target
0.00	0.00	0.00	0.00	0.00	0.00	0.00	0.00	0.00	0.00	
200.00	0.00	0.00	200.00	0.00	0.00	0.00	0.00	0.00	0.00	
500.00	6.00	340.00	499.45	14.75	-5.37	2.00	2.00	0.00	340.00	
600.00	6.00	340.00	598.90	24.57	-8.94	0.00	0.00	0.00	0.00	
831.35	4.44	29.98	829.40	43.70	-8.60	2.00	-0.67	21.60	132.70	
6,289.63	4.44	29.98	6,271.30	409.71	202.55	0.00	0.00	0.00	0.00	
7,332.26	90.00	179.79	6,950.00	-225.38	231.36	9.00	8.21	14.37	149.74	
12,139.77	90.00	179.79	6,950.00	-5,032.86	248.84	0.00	0.00	0.00	0.00	GEORGENE 2833-01

Planning Report

Database:	EDM 5000.16 Single User Db	Local Co-ordinate Reference:	Well GEORGENE 2833-01H
Company:	VERDAD RESOURCES	TVD Reference:	RKB = 24' @ 5042.00usft (RIG)
Project:	WATTENBERG FIELD	MD Reference:	RKB = 24' @ 5042.00usft (RIG)
Site:	2N-64W-28 GEORGENE PAD	North Reference:	True
Well:	GEORGENE 2833-01H	Survey Calculation Method:	Minimum Curvature
Wellbore:	Plan C		
Design:	Design #2		

Planned Survey									
Measured Depth (usft)	Inclination (°)	Azimuth (°)	Vertical Depth (usft)	+N/-S (usft)	+E/-W (usft)	Vertical Section (usft)	Dogleg Rate (°/100usft)	Build Rate (°/100usft)	Turn Rate (°/100usft)
0.00	0.00	0.00	0.00	0.00	0.00	0.00	0.00	0.00	0.00
100.00	0.00	0.00	100.00	0.00	0.00	0.00	0.00	0.00	0.00
200.00	0.00	0.00	200.00	0.00	0.00	0.00	0.00	0.00	0.00
Begin Nudge @ 200.00ft									
300.00	2.00	340.00	299.98	1.64	-0.60	-1.64	2.00	2.00	0.00
400.00	4.00	340.00	399.84	6.56	-2.39	-6.57	2.00	2.00	0.00
500.00	6.00	340.00	499.45	14.75	-5.37	-14.77	2.00	2.00	0.00
Hold Tangent @ 500.00ft									
600.00	6.00	340.00	598.90	24.57	-8.94	-24.60	0.00	0.00	0.00
Change Tangent Direction @ 600.00ft									
700.00	4.87	357.59	698.46	33.72	-10.91	-33.76	2.00	-1.13	17.59
800.00	4.41	21.85	798.14	41.53	-9.66	-41.57	2.00	-0.46	24.27
831.35	4.44	29.98	829.40	43.70	-8.60	-43.73	2.00	0.11	25.92
Hold Tangent @ 831.35ft									
900.00	4.44	29.98	897.84	48.30	-5.95	-48.32	0.00	0.00	0.00
1,000.00	4.44	29.98	997.54	55.01	-2.08	-55.02	0.00	0.00	0.00
1,100.00	4.44	29.98	1,097.24	61.71	1.79	-61.71	0.00	0.00	0.00
1,200.00	4.44	29.98	1,196.94	68.42	5.66	-68.40	0.00	0.00	0.00
1,300.00	4.44	29.98	1,296.64	75.13	9.53	-75.09	0.00	0.00	0.00
1,400.00	4.44	29.98	1,396.34	81.83	13.39	-81.78	0.00	0.00	0.00
1,500.00	4.44	29.98	1,496.04	88.54	17.26	-88.47	0.00	0.00	0.00
1,600.00	4.44	29.98	1,595.74	95.24	21.13	-95.16	0.00	0.00	0.00
1,700.00	4.44	29.98	1,695.44	101.95	25.00	-101.86	0.00	0.00	0.00
1,800.00	4.44	29.98	1,795.14	108.65	28.87	-108.55	0.00	0.00	0.00
1,900.00	4.44	29.98	1,894.84	115.36	32.74	-115.24	0.00	0.00	0.00
2,000.00	4.44	29.98	1,994.54	122.07	36.61	-121.93	0.00	0.00	0.00
2,100.00	4.44	29.98	2,094.24	128.77	40.47	-128.62	0.00	0.00	0.00
2,200.00	4.44	29.98	2,193.94	135.48	44.34	-135.31	0.00	0.00	0.00
2,300.00	4.44	29.98	2,293.64	142.18	48.21	-142.00	0.00	0.00	0.00
2,334.46	4.44	29.98	2,328.00	144.49	49.54	-144.31	0.00	0.00	0.00
9 5/8"									
2,400.00	4.44	29.98	2,393.34	148.89	52.08	-148.70	0.00	0.00	0.00
2,500.00	4.44	29.98	2,493.04	155.59	55.95	-155.39	0.00	0.00	0.00
2,600.00	4.44	29.98	2,592.74	162.30	59.82	-162.08	0.00	0.00	0.00
2,700.00	4.44	29.98	2,692.44	169.00	63.68	-168.77	0.00	0.00	0.00
2,800.00	4.44	29.98	2,792.14	175.71	67.55	-175.46	0.00	0.00	0.00
2,900.00	4.44	29.98	2,891.84	182.42	71.42	-182.15	0.00	0.00	0.00
3,000.00	4.44	29.98	2,991.54	189.12	75.29	-188.84	0.00	0.00	0.00
3,100.00	4.44	29.98	3,091.24	195.83	79.16	-195.54	0.00	0.00	0.00
3,200.00	4.44	29.98	3,190.94	202.53	83.03	-202.23	0.00	0.00	0.00
3,300.00	4.44	29.98	3,290.64	209.24	86.89	-208.92	0.00	0.00	0.00
3,400.00	4.44	29.98	3,390.34	215.94	90.76	-215.61	0.00	0.00	0.00
3,500.00	4.44	29.98	3,490.04	222.65	94.63	-222.30	0.00	0.00	0.00
3,600.00	4.44	29.98	3,589.74	229.36	98.50	-228.99	0.00	0.00	0.00
3,700.00	4.44	29.98	3,689.44	236.06	102.37	-235.69	0.00	0.00	0.00
3,800.00	4.44	29.98	3,789.14	242.77	106.24	-242.38	0.00	0.00	0.00
3,900.00	4.44	29.98	3,888.84	249.47	110.10	-249.07	0.00	0.00	0.00
4,000.00	4.44	29.98	3,988.54	256.18	113.97	-255.76	0.00	0.00	0.00
4,100.00	4.44	29.98	4,088.24	262.88	117.84	-262.45	0.00	0.00	0.00
4,200.00	4.44	29.98	4,187.94	269.59	121.71	-269.14	0.00	0.00	0.00
4,300.00	4.44	29.98	4,287.64	276.30	125.58	-275.83	0.00	0.00	0.00
4,400.00	4.44	29.98	4,387.34	283.00	129.45	-282.53	0.00	0.00	0.00
4,500.00	4.44	29.98	4,487.04	289.71	133.32	-289.22	0.00	0.00	0.00
4,600.00	4.44	29.98	4,586.74	296.41	137.18	-295.91	0.00	0.00	0.00

Planning Report

Database:	EDM 5000.16 Single User Db	Local Co-ordinate Reference:	Well GEORGENE 2833-01H
Company:	VERDAD RESOURCES	TVD Reference:	RKB = 24' @ 5042.00usft (RIG)
Project:	WATTENBERG FIELD	MD Reference:	RKB = 24' @ 5042.00usft (RIG)
Site:	2N-64W-28 GEORGENE PAD	North Reference:	True
Well:	GEORGENE 2833-01H	Survey Calculation Method:	Minimum Curvature
Wellbore:	Plan C		
Design:	Design #2		

Planned Survey									
Measured Depth (usft)	Inclination (°)	Azimuth (°)	Vertical Depth (usft)	+N/-S (usft)	+E/-W (usft)	Vertical Section (usft)	Dogleg Rate (°/100usft)	Build Rate (°/100usft)	Turn Rate (°/100usft)
4,700.00	4.44	29.98	4,686.44	303.12	141.05	-302.60	0.00	0.00	0.00
4,800.00	4.44	29.98	4,786.14	309.82	144.92	-309.29	0.00	0.00	0.00
4,900.00	4.44	29.98	4,885.84	316.53	148.79	-315.98	0.00	0.00	0.00
5,000.00	4.44	29.98	4,985.54	323.24	152.66	-322.67	0.00	0.00	0.00
5,100.00	4.44	29.98	5,085.24	329.94	156.53	-329.37	0.00	0.00	0.00
5,200.00	4.44	29.98	5,184.94	336.65	160.39	-336.06	0.00	0.00	0.00
5,300.00	4.44	29.98	5,284.64	343.35	164.26	-342.75	0.00	0.00	0.00
5,400.00	4.44	29.98	5,384.34	350.06	168.13	-349.44	0.00	0.00	0.00
5,500.00	4.44	29.98	5,484.04	356.76	172.00	-356.13	0.00	0.00	0.00
5,600.00	4.44	29.98	5,583.74	363.47	175.87	-362.82	0.00	0.00	0.00
5,700.00	4.44	29.98	5,683.44	370.18	179.74	-369.51	0.00	0.00	0.00
5,800.00	4.44	29.98	5,783.14	376.88	183.60	-376.21	0.00	0.00	0.00
5,900.00	4.44	29.98	5,882.84	383.59	187.47	-382.90	0.00	0.00	0.00
6,000.00	4.44	29.98	5,982.54	390.29	191.34	-389.59	0.00	0.00	0.00
6,100.00	4.44	29.98	6,082.24	397.00	195.21	-396.28	0.00	0.00	0.00
6,200.00	4.44	29.98	6,181.94	403.70	199.08	-402.97	0.00	0.00	0.00
6,289.63	4.44	29.98	6,271.30	409.71	202.55	-408.97	0.00	0.00	0.00
KOP @ 6289.63ft :: DLS = 9°/100'									
6,300.00	3.66	37.36	6,281.64	410.33	202.95	-409.58	9.00	-7.48	71.17
6,350.00	2.75	125.33	6,331.59	410.90	204.90	-410.15	9.00	-1.83	175.94
6,400.00	6.49	159.72	6,381.42	407.56	206.85	-406.80	9.00	7.49	68.79
6,450.00	10.83	168.01	6,430.84	400.31	208.81	-399.54	9.00	8.67	16.57
6,500.00	15.26	171.56	6,479.54	389.20	210.75	-388.43	9.00	8.86	7.10
6,550.00	19.72	173.54	6,527.22	374.30	212.67	-373.52	9.00	8.92	3.95
6,600.00	24.19	174.81	6,573.58	355.71	214.54	-354.92	9.00	8.95	2.54
6,650.00	28.68	175.70	6,618.34	333.53	216.37	-332.74	9.00	8.97	1.78
6,700.00	33.16	176.37	6,661.23	307.91	218.14	-307.11	9.00	8.97	1.34
6,750.00	37.65	176.89	6,701.97	279.00	219.84	-278.19	9.00	8.98	1.05
6,800.00	42.14	177.32	6,740.32	246.97	221.45	-246.16	9.00	8.98	0.86
6,850.00	46.64	177.68	6,776.04	212.04	222.97	-211.22	9.00	8.99	0.72
6,900.00	51.13	177.99	6,808.91	174.40	224.39	-173.58	9.00	8.99	0.62
6,950.00	55.63	178.26	6,838.73	134.31	225.70	-133.48	9.00	8.99	0.55
7,000.00	60.12	178.51	6,865.31	91.99	226.89	-91.16	9.00	8.99	0.49
7,050.00	64.62	178.73	6,888.49	47.72	227.96	-46.88	9.00	8.99	0.45
7,100.00	69.11	178.94	6,908.13	1.76	228.89	-0.92	9.00	8.99	0.42
7,150.00	73.61	179.13	6,924.11	-45.60	229.69	46.44	9.00	8.99	0.39
7,200.00	78.11	179.32	6,936.32	-94.07	230.34	94.91	9.00	8.99	0.37
7,250.00	82.60	179.50	6,944.70	-143.35	230.85	144.19	9.00	8.99	0.36
7,300.00	87.10	179.68	6,949.18	-193.13	231.21	193.98	9.00	8.99	0.35
7,332.26	90.00	179.79	6,950.00	-225.38	231.36	226.22	9.00	8.99	0.35
End Build @ 7332.26ft									
7,400.00	90.00	179.79	6,950.00	-293.12	231.60	293.96	0.00	0.00	0.00
7,500.00	90.00	179.79	6,950.00	-393.11	231.97	393.96	0.00	0.00	0.00
7,600.00	90.00	179.79	6,950.00	-493.11	232.33	493.96	0.00	0.00	0.00
7,700.00	90.00	179.79	6,950.00	-593.11	232.69	593.96	0.00	0.00	0.00
7,800.00	90.00	179.79	6,950.00	-693.11	233.06	693.96	0.00	0.00	0.00
7,900.00	90.00	179.79	6,950.00	-793.11	233.42	793.96	0.00	0.00	0.00
8,000.00	90.00	179.79	6,950.00	-893.11	233.78	893.96	0.00	0.00	0.00
8,100.00	90.00	179.79	6,950.00	-993.11	234.15	993.96	0.00	0.00	0.00
8,200.00	90.00	179.79	6,950.00	-1,093.11	234.51	1,093.96	0.00	0.00	0.00
8,300.00	90.00	179.79	6,950.00	-1,193.11	234.88	1,193.96	0.00	0.00	0.00
8,400.00	90.00	179.79	6,950.00	-1,293.11	235.24	1,293.96	0.00	0.00	0.00
8,500.00	90.00	179.79	6,950.00	-1,393.11	235.60	1,393.96	0.00	0.00	0.00

Planning Report

Database:	EDM 5000.16 Single User Db	Local Co-ordinate Reference:	Well GEORGENE 2833-01H
Company:	VERDAD RESOURCES	TVD Reference:	RKB = 24' @ 5042.00usft (RIG)
Project:	WATTENBERG FIELD	MD Reference:	RKB = 24' @ 5042.00usft (RIG)
Site:	2N-64W-28 GEORGENE PAD	North Reference:	True
Well:	GEORGENE 2833-01H	Survey Calculation Method:	Minimum Curvature
Wellbore:	Plan C		
Design:	Design #2		

Planned Survey										
Measured Depth (usft)	Inclination (°)	Azimuth (°)	Vertical Depth (usft)	+N/-S (usft)	+E/-W (usft)	Vertical Section (usft)	Dogleg Rate (°/100usft)	Build Rate (°/100usft)	Turn Rate (°/100usft)	
8,600.00	90.00	179.79	6,950.00	-1,493.11	235.97	1,493.96	0.00	0.00	0.00	
8,700.00	90.00	179.79	6,950.00	-1,593.11	236.33	1,593.96	0.00	0.00	0.00	
8,800.00	90.00	179.79	6,950.00	-1,693.11	236.69	1,693.96	0.00	0.00	0.00	
8,900.00	90.00	179.79	6,950.00	-1,793.11	237.06	1,793.96	0.00	0.00	0.00	
9,000.00	90.00	179.79	6,950.00	-1,893.10	237.42	1,893.96	0.00	0.00	0.00	
9,100.00	90.00	179.79	6,950.00	-1,993.10	237.79	1,993.96	0.00	0.00	0.00	
9,200.00	90.00	179.79	6,950.00	-2,093.10	238.15	2,093.96	0.00	0.00	0.00	
9,300.00	90.00	179.79	6,950.00	-2,193.10	238.51	2,193.96	0.00	0.00	0.00	
9,400.00	90.00	179.79	6,950.00	-2,293.10	238.88	2,293.96	0.00	0.00	0.00	
9,500.00	90.00	179.79	6,950.00	-2,393.10	239.24	2,393.96	0.00	0.00	0.00	
9,600.00	90.00	179.79	6,950.00	-2,493.10	239.61	2,493.96	0.00	0.00	0.00	
9,700.00	90.00	179.79	6,950.00	-2,593.10	239.97	2,593.96	0.00	0.00	0.00	
9,800.00	90.00	179.79	6,950.00	-2,693.10	240.33	2,693.96	0.00	0.00	0.00	
9,900.00	90.00	179.79	6,950.00	-2,793.10	240.70	2,793.96	0.00	0.00	0.00	
10,000.00	90.00	179.79	6,950.00	-2,893.10	241.06	2,893.96	0.00	0.00	0.00	
10,100.00	90.00	179.79	6,950.00	-2,993.10	241.42	2,993.96	0.00	0.00	0.00	
10,200.00	90.00	179.79	6,950.00	-3,093.10	241.79	3,093.96	0.00	0.00	0.00	
10,300.00	90.00	179.79	6,950.00	-3,193.10	242.15	3,193.96	0.00	0.00	0.00	
10,400.00	90.00	179.79	6,950.00	-3,293.10	242.52	3,293.96	0.00	0.00	0.00	
10,500.00	90.00	179.79	6,950.00	-3,393.10	242.88	3,393.96	0.00	0.00	0.00	
10,600.00	90.00	179.79	6,950.00	-3,493.09	243.24	3,493.96	0.00	0.00	0.00	
10,700.00	90.00	179.79	6,950.00	-3,593.09	243.61	3,593.96	0.00	0.00	0.00	
10,800.00	90.00	179.79	6,950.00	-3,693.09	243.97	3,693.96	0.00	0.00	0.00	
10,900.00	90.00	179.79	6,950.00	-3,793.09	244.33	3,793.96	0.00	0.00	0.00	
11,000.00	90.00	179.79	6,950.00	-3,893.09	244.70	3,893.96	0.00	0.00	0.00	
11,100.00	90.00	179.79	6,950.00	-3,993.09	245.06	3,993.96	0.00	0.00	0.00	
11,200.00	90.00	179.79	6,950.00	-4,093.09	245.43	4,093.96	0.00	0.00	0.00	
11,300.00	90.00	179.79	6,950.00	-4,193.09	245.79	4,193.96	0.00	0.00	0.00	
11,400.00	90.00	179.79	6,950.00	-4,293.09	246.15	4,293.96	0.00	0.00	0.00	
11,500.00	90.00	179.79	6,950.00	-4,393.09	246.52	4,393.96	0.00	0.00	0.00	
11,600.00	90.00	179.79	6,950.00	-4,493.09	246.88	4,493.96	0.00	0.00	0.00	
11,700.00	90.00	179.79	6,950.00	-4,593.09	247.24	4,593.96	0.00	0.00	0.00	
11,800.00	90.00	179.79	6,950.00	-4,693.09	247.61	4,693.96	0.00	0.00	0.00	
11,900.00	90.00	179.79	6,950.00	-4,793.09	247.97	4,793.96	0.00	0.00	0.00	
12,000.00	90.00	179.79	6,950.00	-4,893.09	248.34	4,893.96	0.00	0.00	0.00	
12,100.00	90.00	179.79	6,950.00	-4,993.08	248.70	4,993.96	0.00	0.00	0.00	
12,139.77	90.00	179.79	6,950.00	-5,032.86	248.84	5,033.74	0.00	0.00	0.00	
TD Well @ 12139.77ft										

Casing Points					
Measured Depth (usft)	Vertical Depth (usft)	Name		Casing Diameter (")	Hole Diameter (")
2,334.46	2,328.00	9 5/8"		9-5/8	13-1/2

Planning Report

Database:	EDM 5000.16 Single User Db	Local Co-ordinate Reference:	Well GEORGENE 2833-01H
Company:	VERDAD RESOURCES	TVD Reference:	RKB = 24' @ 5042.00usft (RIG)
Project:	WATTENBERG FIELD	MD Reference:	RKB = 24' @ 5042.00usft (RIG)
Site:	2N-64W-28 GEORGENE PAD	North Reference:	True
Well:	GEORGENE 2833-01H	Survey Calculation Method:	Minimum Curvature
Wellbore:	Plan C		
Design:	Design #2		

Plan Annotations				
Measured Depth (usft)	Vertical Depth (usft)	Local Coordinates		Comment
		+N/-S (usft)	+E/-W (usft)	
200.00	200.00	0.00	0.00	Begin Nudge @ 200.00ft
500.00	499.45	14.75	-5.37	Hold Tangent @ 500.00ft
600.00	598.90	24.57	-8.94	Change Tangent Direction @ 600.00ft
831.35	829.40	43.70	-8.60	Hold Tangent @ 831.35ft
6,289.63	6,271.30	409.71	202.55	KOP @ 6289.63ft :: DLS = 9°/100'
7,332.26	6,950.00	-225.38	231.36	End Build @ 7332.26ft
12,139.77	6,950.00	-5,032.86	248.84	TD Well @ 12139.77ft