

# **VERDAD RESOURCES**

**WATTENBERG FIELD  
2N-64W-28 GEORGENE PAD  
GEORGENE 2833-08H**

**Plan C**

**Plan: Design #2**

## **Standard Planning Report**

**28 July, 2022**

Project: WATTENBERG FIELD  
Site: 2N-64W-28 GEORGENE PAD  
Well: GEORGENE 2833-08H  
Wellbore: Plan C  
Design: Design #2

# VERDAD RESOURCES

## CASING DETAILS

TVD	MD	Name	Size
2328.00	2410.12	9 5/8"	9-5/8

SHL  
222' FSL  
579' FEL

LP/TPZ  
2160' FSL  
460' FEL

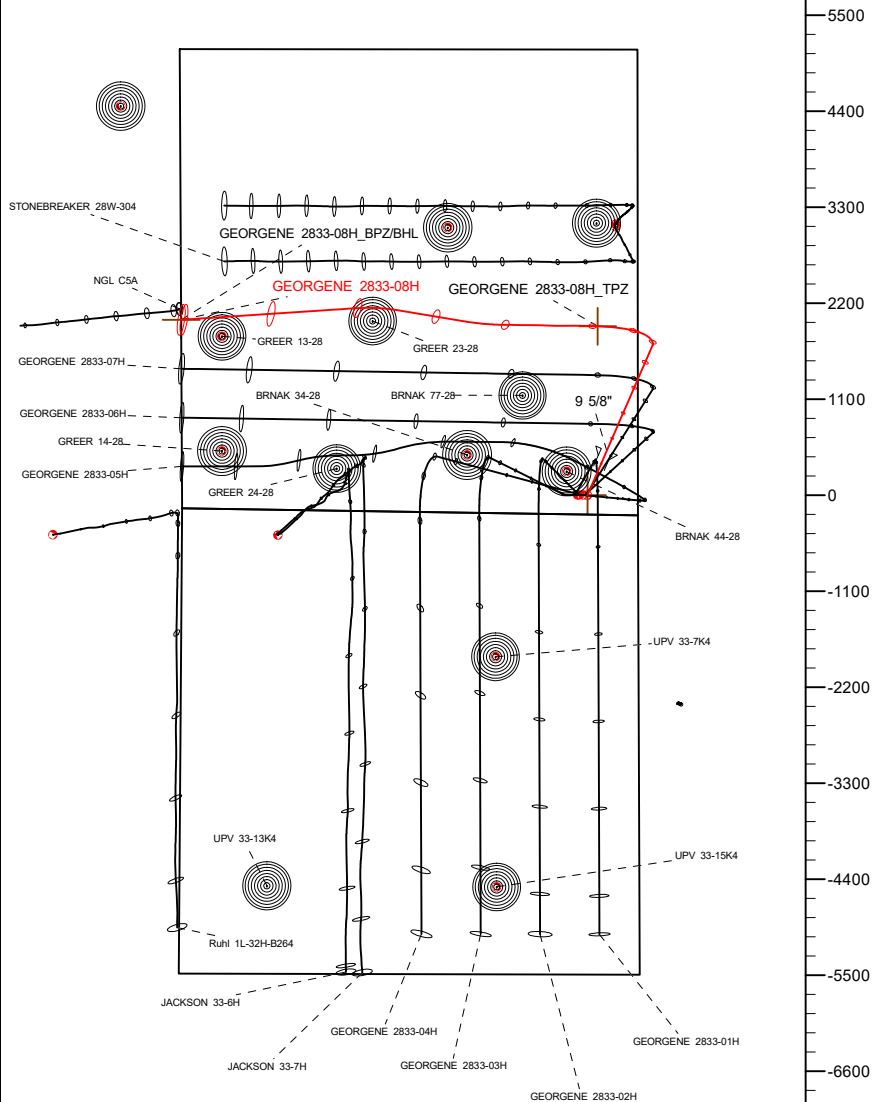
BPZ/BHL  
2160' FSL  
0' FWL

## SECTION DETAILS

MD	Inc	Azi	TVD	+N/-S	+E/-W	Dleg	TFace	VSect	Target
0.00	0.00	0.00	0.00	0.00	0.00	0.00	0.00	0.00	
201.31	0.00	0.00	201.31	0.00	0.00	0.00	0.00	0.00	
1124.81	18.47	23.46	1108.90	135.37	58.75	2.00	23.46	-56.66	
6563.72	18.47	23.46	6267.65	1716.03	744.72	0.00	0.00	-718.28	
7641.35	90.00	270.88	6950.00	1936.15	116.14	9.00	-111.53	-86.39	
8738.52	90.00	270.88	6950.00	1953.00	-980.90	0.00	0.00	1010.77	
9164.52	90.00	279.40	6950.00	1991.13	-1404.79	2.00	90.00	1435.21	
9964.52	90.00	279.40	6950.00	2121.79	-2194.05	0.00	0.00	2226.38	
10404.28	90.00	266.21	6950.00	2143.25	-2632.31	3.00	-90.00	2664.92	
12431.86	90.00	266.21	6950.00	2009.13	-4655.46	0.00	0.00	4685.77	GEORGENE 2833-08H_BPZ/BHL

West(-)/East(+) (2200 usft/in)

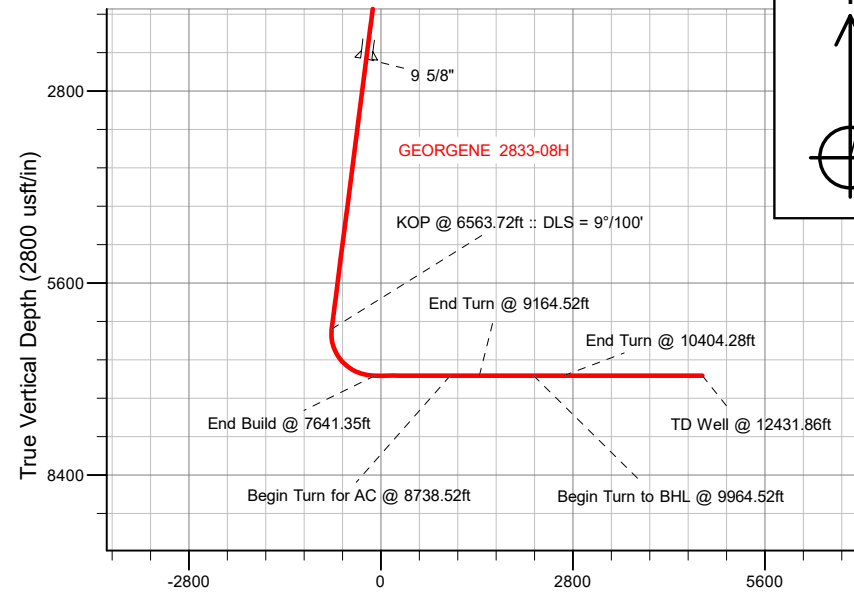
-5500 -4400 -3300 -2200 -1100 0 1100 2200



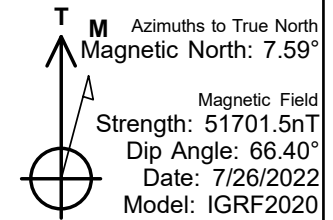
## WELLBORE TARGET DETAILS (LAT/LONG)

Name	TVD	Northing	Easting	Latitude	Longitude
GEORGENE 2833-08H_SHL	0.00	1281682.28	3266065.24	40.102693	-104.548837
GEORGENE 2833-08H_TPZ	6950.00	1283619.62	3266160.53	40.108008	-104.548423
GEORGENE 2833-08H_BPZ/BHL	6950.00	1283641.36	3261388.50	40.108207	-104.565481

South(-)/North(+) (2200 usft/in)



Vertical Section at 270.88° (2800 usft/in)



## WELL DETAILS: GEORGENE 2833-08H

GL = 5018'  
RKB = 24' @ 5042.00usft (RIG)

Plan: Design #2 (GEORGENE 2833-08H/Plan C)

Date: 7/29/2022

## Planning Report

<b>Database:</b>	EDM 5000.16 Single User Db	<b>Local Co-ordinate Reference:</b>	Well GEORGENE 2833-08H
<b>Company:</b>	VERDAD RESOURCES	<b>TVD Reference:</b>	RKB = 24' @ 5042.00usft (RIG)
<b>Project:</b>	WATTENBERG FIELD	<b>MD Reference:</b>	RKB = 24' @ 5042.00usft (RIG)
<b>Site:</b>	2N-64W-28 GEORGENE PAD	<b>North Reference:</b>	True
<b>Well:</b>	GEORGENE 2833-08H	<b>Survey Calculation Method:</b>	Minimum Curvature
<b>Wellbore:</b>	Plan C		
<b>Design:</b>	Design #2		

<b>Project</b>	WATTENBERG FIELD		
<b>Map System:</b>	US State Plane 1983	<b>System Datum:</b>	Mean Sea Level
<b>Geo Datum:</b>	North American Datum 1983		
<b>Map Zone:</b>	Colorado Northern Zone		

<b>Site</b>	2N-64W-28 GEORGENE PAD			
<b>Site Position:</b>		<b>Northing:</b>	1,281,723.49 usft	<b>Latitude:</b> 40.102807
<b>From:</b>	Lat/Long	<b>Easting:</b>	3,266,028.51 usft	<b>Longitude:</b> -104.548967
<b>Position Uncertainty:</b>	0.00 usft	<b>Slot Radius:</b>	13-3/16 "	

<b>Well</b>	GEORGENE 2833-08H			
<b>Well Position</b>	<b>+N/-S</b>	0.00 usft	<b>Northing:</b>	1,281,682.28 usft
	<b>+E/-W</b>	0.00 usft	<b>Easting:</b>	3,266,065.24 usft
<b>Position Uncertainty</b>		3.28 usft	<b>Wellhead Elevation:</b>	usft
<b>Grid Convergence:</b>		0.61 °	<b>Ground Level:</b>	5,018.00 usft

<b>Wellbore</b>	Plan C				
<b>Magnetics</b>	<b>Model Name</b>	<b>Sample Date</b>	<b>Declination (°)</b>	<b>Dip Angle (°)</b>	<b>Field Strength (nT)</b>
	IGRF202013	7/26/2022	7.59	66.40	51,701.49428473

<b>Design</b>	Design #2				
<b>Audit Notes:</b>					
<b>Version:</b>		<b>Phase:</b>	PLAN	<b>Tie On Depth:</b>	0.00
<b>Vertical Section:</b>		<b>Depth From (TVD) (usft)</b>	<b>+N/-S (usft)</b>	<b>+E/-W (usft)</b>	<b>Direction (°)</b>
		0.00	0.00	0.00	270.88

<b>Plan Survey Tool Program</b>		<b>Date</b>	7/28/2022		
<b>Depth From (usft)</b>	<b>Depth To (usft)</b>	<b>Survey (Wellbore)</b>	<b>Tool Name</b>	<b>Remarks</b>	
1	0.00	2,328.00	Design #2 (Plan C)	ISCWSA MWD	
				Fixed:v2:standard declination	
2	2,328.00	12,431.86	Design #2 (Plan C)	ISCWSA MWD	
				Fixed:v2:standard declination	

Planning Report

Database:	EDM 5000.16 Single User Db	Local Co-ordinate Reference:	Well GEORGENE 2833-08H
Company:	VERDAD RESOURCES	TVD Reference:	RKB = 24' @ 5042.00usft (RIG)
Project:	WATTENBERG FIELD	MD Reference:	RKB = 24' @ 5042.00usft (RIG)
Site:	2N-64W-28 GEORGENE PAD	North Reference:	True
Well:	GEORGENE 2833-08H	Survey Calculation Method:	Minimum Curvature
Wellbore:	Plan C		
Design:	Design #2		

Plan Sections										
Measured Depth (usft)	Inclination (°)	Azimuth (°)	Vertical Depth (usft)	+N/-S (usft)	+E/-W (usft)	Dogleg Rate (°/100usft)	Build Rate (°/100usft)	Turn Rate (°/100usft)	TFO (°)	Target
0.00	0.00	0.00	0.00	0.00	0.00	0.00	0.00	0.00	0.00	
201.31	0.00	0.00	201.31	0.00	0.00	0.00	0.00	0.00	0.00	
1,124.81	18.47	23.46	1,108.90	135.37	58.75	2.00	2.00	0.00	23.46	
6,563.72	18.47	23.46	6,267.65	1,716.03	744.72	0.00	0.00	0.00	0.00	
7,641.35	90.00	270.88	6,950.00	1,936.15	116.14	9.00	6.64	-10.45	-111.53	
8,738.52	90.00	270.88	6,950.00	1,953.00	-980.90	0.00	0.00	0.00	0.00	
9,164.52	90.00	279.40	6,950.00	1,991.13	-1,404.79	2.00	0.00	2.00	90.00	
9,964.52	90.00	279.40	6,950.00	2,121.79	-2,194.05	0.00	0.00	0.00	0.00	
10,404.28	90.00	266.21	6,950.00	2,143.25	-2,632.31	3.00	0.00	-3.00	-90.00	
12,431.86	90.00	266.21	6,950.00	2,009.13	-4,655.46	0.00	0.00	0.00	0.00	GEORGENE 2833-08

# Planning Report

<b>Database:</b>	EDM 5000.16 Single User Db	<b>Local Co-ordinate Reference:</b>	Well GEORGENE 2833-08H
<b>Company:</b>	VERDAD RESOURCES	<b>TVD Reference:</b>	RKB = 24' @ 5042.00usft (RIG)
<b>Project:</b>	WATTENBERG FIELD	<b>MD Reference:</b>	RKB = 24' @ 5042.00usft (RIG)
<b>Site:</b>	2N-64W-28 GEORGENE PAD	<b>North Reference:</b>	True
<b>Well:</b>	GEORGENE 2833-08H	<b>Survey Calculation Method:</b>	Minimum Curvature
<b>Wellbore:</b>	Plan C		
<b>Design:</b>	Design #2		

Planned Survey									
Measured Depth (usft)	Inclination (°)	Azimuth (°)	Vertical Depth (usft)	+N/-S (usft)	+E/-W (usft)	Vertical Section (usft)	Dogleg Rate (°/100usft)	Build Rate (°/100usft)	Turn Rate (°/100usft)
0.00	0.00	0.00	0.00	0.00	0.00	0.00	0.00	0.00	0.00
100.00	0.00	0.00	100.00	0.00	0.00	0.00	0.00	0.00	0.00
201.31	0.00	0.00	201.31	0.00	0.00	0.00	0.00	0.00	0.00
Begin Nudge @ 201.31ft									
300.00	1.97	23.46	299.98	1.56	0.68	-0.65	2.00	2.00	0.00
400.00	3.97	23.46	399.84	6.32	2.74	-2.64	2.00	2.00	0.00
500.00	5.97	23.46	499.46	14.27	6.19	-5.97	2.00	2.00	0.00
600.00	7.97	23.46	598.71	25.41	11.03	-10.64	2.00	2.00	0.00
700.00	9.97	23.46	697.49	39.72	17.24	-16.62	2.00	2.00	0.00
800.00	11.97	23.46	795.65	57.18	24.81	-23.93	2.00	2.00	0.00
900.00	13.97	23.46	893.09	77.77	33.75	-32.55	2.00	2.00	0.00
1,000.00	15.97	23.46	989.69	101.47	44.04	-42.47	2.00	2.00	0.00
1,100.00	17.97	23.46	1,085.33	128.25	55.66	-53.68	2.00	2.00	0.00
1,124.81	18.47	23.46	1,108.90	135.37	58.75	-56.66	2.00	2.00	0.00
Hold Tangent @ 1124.81ft									
1,200.00	18.47	23.46	1,180.22	157.22	68.23	-65.81	0.00	0.00	0.00
1,300.00	18.47	23.46	1,275.06	186.28	80.84	-77.97	0.00	0.00	0.00
1,400.00	18.47	23.46	1,369.91	215.34	93.46	-90.14	0.00	0.00	0.00
1,500.00	18.47	23.46	1,464.76	244.41	106.07	-102.30	0.00	0.00	0.00
1,600.00	18.47	23.46	1,559.61	273.47	118.68	-114.47	0.00	0.00	0.00
1,700.00	18.47	23.46	1,654.46	302.53	131.29	-126.63	0.00	0.00	0.00
1,800.00	18.47	23.46	1,749.31	331.59	143.91	-138.80	0.00	0.00	0.00
1,900.00	18.47	23.46	1,844.16	360.65	156.52	-150.96	0.00	0.00	0.00
2,000.00	18.47	23.46	1,939.01	389.72	169.13	-163.12	0.00	0.00	0.00
2,100.00	18.47	23.46	2,033.86	418.78	181.74	-175.29	0.00	0.00	0.00
2,200.00	18.47	23.46	2,128.70	447.84	194.35	-187.45	0.00	0.00	0.00
2,300.00	18.47	23.46	2,223.55	476.90	206.97	-199.62	0.00	0.00	0.00
2,400.00	18.47	23.46	2,318.40	505.96	219.58	-211.78	0.00	0.00	0.00
2,410.12	18.47	23.46	2,328.00	508.90	220.86	-213.01	0.00	0.00	0.00
9 5/8"									
2,500.00	18.47	23.46	2,413.25	535.03	232.19	-223.95	0.00	0.00	0.00
2,600.00	18.47	23.46	2,508.10	564.09	244.80	-236.11	0.00	0.00	0.00
2,700.00	18.47	23.46	2,602.95	593.15	257.42	-248.28	0.00	0.00	0.00
2,800.00	18.47	23.46	2,697.80	622.21	270.03	-260.44	0.00	0.00	0.00
2,900.00	18.47	23.46	2,792.65	651.27	282.64	-272.61	0.00	0.00	0.00
3,000.00	18.47	23.46	2,887.50	680.34	295.25	-284.77	0.00	0.00	0.00
3,100.00	18.47	23.46	2,982.35	709.40	307.87	-296.93	0.00	0.00	0.00
3,200.00	18.47	23.46	3,077.19	738.46	320.48	-309.10	0.00	0.00	0.00
3,300.00	18.47	23.46	3,172.04	767.52	333.09	-321.26	0.00	0.00	0.00
3,400.00	18.47	23.46	3,266.89	796.58	345.70	-333.43	0.00	0.00	0.00
3,500.00	18.47	23.46	3,361.74	825.65	358.32	-345.59	0.00	0.00	0.00
3,600.00	18.47	23.46	3,456.59	854.71	370.93	-357.76	0.00	0.00	0.00
3,700.00	18.47	23.46	3,551.44	883.77	383.54	-369.92	0.00	0.00	0.00
3,800.00	18.47	23.46	3,646.29	912.83	396.15	-382.09	0.00	0.00	0.00
3,900.00	18.47	23.46	3,741.14	941.89	408.77	-394.25	0.00	0.00	0.00
4,000.00	18.47	23.46	3,835.99	970.96	421.38	-406.42	0.00	0.00	0.00
4,100.00	18.47	23.46	3,930.84	1,000.02	433.99	-418.58	0.00	0.00	0.00
4,200.00	18.47	23.46	4,025.68	1,029.08	446.60	-430.75	0.00	0.00	0.00
4,300.00	18.47	23.46	4,120.53	1,058.14	459.22	-442.91	0.00	0.00	0.00
4,400.00	18.47	23.46	4,215.38	1,087.20	471.83	-455.07	0.00	0.00	0.00
4,500.00	18.47	23.46	4,310.23	1,116.27	484.44	-467.24	0.00	0.00	0.00
4,600.00	18.47	23.46	4,405.08	1,145.33	497.05	-479.40	0.00	0.00	0.00
4,700.00	18.47	23.46	4,499.93	1,174.39	509.66	-491.57	0.00	0.00	0.00

# Planning Report

<b>Database:</b>	EDM 5000.16 Single User Db	<b>Local Co-ordinate Reference:</b>	Well GEORGENE 2833-08H
<b>Company:</b>	VERDAD RESOURCES	<b>TVD Reference:</b>	RKB = 24' @ 5042.00usft (RIG)
<b>Project:</b>	WATTENBERG FIELD	<b>MD Reference:</b>	RKB = 24' @ 5042.00usft (RIG)
<b>Site:</b>	2N-64W-28 GEORGENE PAD	<b>North Reference:</b>	True
<b>Well:</b>	GEORGENE 2833-08H	<b>Survey Calculation Method:</b>	Minimum Curvature
<b>Wellbore:</b>	Plan C		
<b>Design:</b>	Design #2		

Planned Survey									
Measured Depth (usft)	Inclination (°)	Azimuth (°)	Vertical Depth (usft)	+N/-S (usft)	+E/-W (usft)	Vertical Section (usft)	Dogleg Rate (°/100usft)	Build Rate (°/100usft)	Turn Rate (°/100usft)
4,800.00	18.47	23.46	4,594.78	1,203.45	522.28	-503.73	0.00	0.00	0.00
4,900.00	18.47	23.46	4,689.63	1,232.51	534.89	-515.90	0.00	0.00	0.00
5,000.00	18.47	23.46	4,784.48	1,261.58	547.50	-528.06	0.00	0.00	0.00
5,100.00	18.47	23.46	4,879.33	1,290.64	560.11	-540.23	0.00	0.00	0.00
5,200.00	18.47	23.46	4,974.17	1,319.70	572.73	-552.39	0.00	0.00	0.00
5,300.00	18.47	23.46	5,069.02	1,348.76	585.34	-564.56	0.00	0.00	0.00
5,400.00	18.47	23.46	5,163.87	1,377.82	597.95	-576.72	0.00	0.00	0.00
5,500.00	18.47	23.46	5,258.72	1,406.89	610.56	-588.88	0.00	0.00	0.00
5,600.00	18.47	23.46	5,353.57	1,435.95	623.18	-601.05	0.00	0.00	0.00
5,700.00	18.47	23.46	5,448.42	1,465.01	635.79	-613.21	0.00	0.00	0.00
5,800.00	18.47	23.46	5,543.27	1,494.07	648.40	-625.38	0.00	0.00	0.00
5,900.00	18.47	23.46	5,638.12	1,523.13	661.01	-637.54	0.00	0.00	0.00
6,000.00	18.47	23.46	5,732.97	1,552.20	673.63	-649.71	0.00	0.00	0.00
6,100.00	18.47	23.46	5,827.81	1,581.26	686.24	-661.87	0.00	0.00	0.00
6,200.00	18.47	23.46	5,922.66	1,610.32	698.85	-674.04	0.00	0.00	0.00
6,300.00	18.47	23.46	6,017.51	1,639.38	711.46	-686.20	0.00	0.00	0.00
6,400.00	18.47	23.46	6,112.36	1,668.44	724.08	-698.37	0.00	0.00	0.00
6,500.00	18.47	23.46	6,207.21	1,697.51	736.69	-710.53	0.00	0.00	0.00
6,563.72	18.47	23.46	6,267.65	1,716.03	744.72	-718.28	0.00	0.00	0.00
KOP @ 6563.72ft :: DLS = 9°/100'									
6,600.00	17.53	13.33	6,302.16	1,726.62	748.27	-721.67	9.00	-2.60	-27.93
6,650.00	17.16	358.24	6,349.91	1,741.32	749.78	-722.95	9.00	-0.74	-30.17
6,700.00	17.91	343.48	6,397.61	1,756.07	747.37	-720.31	9.00	1.51	-29.53
6,750.00	19.66	330.56	6,444.97	1,770.78	741.04	-713.76	9.00	3.50	-25.83
6,800.00	22.17	320.07	6,491.69	1,785.34	730.85	-703.34	9.00	5.02	-20.99
6,850.00	25.21	311.80	6,537.48	1,799.68	716.85	-689.12	9.00	6.09	-16.54
6,900.00	28.62	305.29	6,582.07	1,813.71	699.13	-671.19	9.00	6.82	-13.01
6,950.00	32.28	300.11	6,625.17	1,827.33	677.79	-649.64	9.00	7.31	-10.37
7,000.00	36.11	295.89	6,666.53	1,840.47	652.97	-624.63	9.00	7.66	-8.43
7,050.00	40.06	292.40	6,705.88	1,853.04	624.83	-596.30	9.00	7.90	-6.99
7,100.00	44.10	289.44	6,742.99	1,864.96	593.53	-564.82	9.00	8.08	-5.92
7,150.00	48.21	286.88	6,777.62	1,876.17	559.27	-530.39	9.00	8.21	-5.11
7,200.00	52.36	284.64	6,809.56	1,886.59	522.27	-493.23	9.00	8.31	-4.49
7,250.00	56.56	282.63	6,838.62	1,896.16	482.74	-453.56	9.00	8.39	-4.01
7,300.00	60.78	280.81	6,864.62	1,904.82	440.93	-411.62	9.00	8.45	-3.64
7,350.00	65.02	279.14	6,887.39	1,912.52	397.10	-367.68	9.00	8.49	-3.35
7,400.00	69.29	277.58	6,906.80	1,919.21	351.52	-322.00	9.00	8.53	-3.13
7,450.00	73.57	276.10	6,922.72	1,924.84	304.47	-274.88	9.00	8.55	-2.95
7,500.00	77.85	274.69	6,935.06	1,929.39	256.25	-226.59	9.00	8.57	-2.83
7,550.00	82.15	273.32	6,943.74	1,932.82	207.14	-177.43	9.00	8.59	-2.74
7,600.00	86.44	271.98	6,948.71	1,935.12	157.45	-127.72	9.00	8.60	-2.68
7,641.35	90.00	270.88	6,950.00	1,936.15	116.14	-86.39	9.00	8.60	-2.66
End Build @ 7641.35ft									
7,700.00	90.00	270.88	6,950.00	1,937.05	57.50	-27.74	0.00	0.00	0.00
7,800.00	90.00	270.88	6,950.00	1,938.58	-42.49	72.26	0.00	0.00	0.00
7,900.00	90.00	270.88	6,950.00	1,940.12	-142.48	172.26	0.00	0.00	0.00
8,000.00	90.00	270.88	6,950.00	1,941.66	-242.46	272.26	0.00	0.00	0.00
8,100.00	90.00	270.88	6,950.00	1,943.19	-342.45	372.26	0.00	0.00	0.00
8,200.00	90.00	270.88	6,950.00	1,944.73	-442.44	472.26	0.00	0.00	0.00
8,300.00	90.00	270.88	6,950.00	1,946.26	-542.43	572.26	0.00	0.00	0.00
8,400.00	90.00	270.88	6,950.00	1,947.80	-642.42	672.26	0.00	0.00	0.00
8,500.00	90.00	270.88	6,950.00	1,949.33	-742.40	772.26	0.00	0.00	0.00
8,600.00	90.00	270.88	6,950.00	1,950.87	-842.39	872.26	0.00	0.00	0.00
8,700.00	90.00	270.88	6,950.00	1,952.41	-942.38	972.26	0.00	0.00	0.00

## Planning Report

<b>Database:</b>	EDM 5000.16 Single User Db	<b>Local Co-ordinate Reference:</b>	Well GEORGENE 2833-08H
<b>Company:</b>	VERDAD RESOURCES	<b>TVD Reference:</b>	RKB = 24' @ 5042.00usft (RIG)
<b>Project:</b>	WATTENBERG FIELD	<b>MD Reference:</b>	RKB = 24' @ 5042.00usft (RIG)
<b>Site:</b>	2N-64W-28 GEORGENE PAD	<b>North Reference:</b>	True
<b>Well:</b>	GEORGENE 2833-08H	<b>Survey Calculation Method:</b>	Minimum Curvature
<b>Wellbore:</b>	Plan C		
<b>Design:</b>	Design #2		

## Planned Survey

Measured Depth (usft)	Inclination (°)	Azimuth (°)	Vertical Depth (usft)	+N/-S (usft)	+E/-W (usft)	Vertical Section (usft)	Dogleg Rate (°/100usft)	Build Rate (°/100usft)	Turn Rate (°/100usft)
8,738.52	90.00	270.88	6,950.00	1,953.00	-980.90	1,010.77	0.00	0.00	0.00
Begin Turn for AC @ 8738.52ft									
8,800.00	90.00	272.11	6,950.00	1,954.60	-1,042.35	1,072.25	2.00	0.00	2.00
8,900.00	90.00	274.11	6,950.00	1,960.03	-1,142.20	1,172.17	2.00	0.00	2.00
9,000.00	90.00	276.11	6,950.00	1,968.93	-1,241.80	1,271.89	2.00	0.00	2.00
9,100.00	90.00	278.11	6,950.00	1,981.31	-1,341.03	1,371.30	2.00	0.00	2.00
9,164.52	90.00	279.40	6,950.00	1,991.13	-1,404.79	1,435.21	2.00	0.00	2.00
End Turn @ 9164.52ft									
9,200.00	90.00	279.40	6,950.00	1,996.92	-1,439.80	1,470.30	0.00	0.00	0.00
9,300.00	90.00	279.40	6,950.00	2,013.26	-1,538.45	1,569.19	0.00	0.00	0.00
9,400.00	90.00	279.40	6,950.00	2,029.59	-1,637.11	1,668.09	0.00	0.00	0.00
9,500.00	90.00	279.40	6,950.00	2,045.92	-1,735.77	1,766.99	0.00	0.00	0.00
9,600.00	90.00	279.40	6,950.00	2,062.25	-1,834.43	1,865.88	0.00	0.00	0.00
9,700.00	90.00	279.40	6,950.00	2,078.59	-1,933.08	1,964.78	0.00	0.00	0.00
9,800.00	90.00	279.40	6,950.00	2,094.92	-2,031.74	2,063.67	0.00	0.00	0.00
9,900.00	90.00	279.40	6,950.00	2,111.25	-2,130.40	2,162.57	0.00	0.00	0.00
9,964.52	90.00	279.40	6,950.00	2,121.79	-2,194.05	2,226.38	0.00	0.00	0.00
Begin Turn to BHL @ 9964.52ft									
10,000.00	90.00	278.34	6,950.00	2,127.26	-2,229.11	2,261.51	3.00	0.00	-3.00
10,100.00	90.00	275.34	6,950.00	2,139.16	-2,328.38	2,360.96	3.00	0.00	-3.00
10,200.00	90.00	272.34	6,950.00	2,145.85	-2,428.15	2,460.82	3.00	0.00	-3.00
10,300.00	90.00	269.34	6,950.00	2,147.31	-2,528.13	2,560.81	3.00	0.00	-3.00
10,404.28	90.00	266.21	6,950.00	2,143.25	-2,632.31	2,664.92	3.00	0.00	-3.00
End Turn @ 10404.28ft									
10,500.00	90.00	266.21	6,950.00	2,136.92	-2,727.83	2,760.32	0.00	0.00	0.00
10,600.00	90.00	266.21	6,950.00	2,130.30	-2,827.61	2,859.99	0.00	0.00	0.00
10,700.00	90.00	266.21	6,950.00	2,123.69	-2,927.39	2,959.66	0.00	0.00	0.00
10,800.00	90.00	266.21	6,950.00	2,117.07	-3,027.17	3,059.33	0.00	0.00	0.00
10,900.00	90.00	266.21	6,950.00	2,110.46	-3,126.95	3,158.99	0.00	0.00	0.00
11,000.00	90.00	266.21	6,950.00	2,103.85	-3,226.73	3,258.66	0.00	0.00	0.00
11,100.00	90.00	266.21	6,950.00	2,097.23	-3,326.51	3,358.33	0.00	0.00	0.00
11,200.00	90.00	266.21	6,950.00	2,090.62	-3,426.29	3,458.00	0.00	0.00	0.00
11,300.00	90.00	266.21	6,950.00	2,084.00	-3,526.07	3,557.66	0.00	0.00	0.00
11,400.00	90.00	266.21	6,950.00	2,077.39	-3,625.85	3,657.33	0.00	0.00	0.00
11,500.00	90.00	266.21	6,950.00	2,070.77	-3,725.63	3,757.00	0.00	0.00	0.00
11,600.00	90.00	266.21	6,950.00	2,064.16	-3,825.42	3,856.67	0.00	0.00	0.00
11,700.00	90.00	266.21	6,950.00	2,057.54	-3,925.20	3,956.33	0.00	0.00	0.00
11,800.00	90.00	266.21	6,950.00	2,050.93	-4,024.98	4,056.00	0.00	0.00	0.00
11,900.00	90.00	266.21	6,950.00	2,044.31	-4,124.76	4,155.67	0.00	0.00	0.00
12,000.00	90.00	266.21	6,950.00	2,037.70	-4,224.54	4,255.34	0.00	0.00	0.00
12,100.00	90.00	266.21	6,950.00	2,031.08	-4,324.32	4,355.00	0.00	0.00	0.00
12,200.00	90.00	266.21	6,950.00	2,024.47	-4,424.10	4,454.67	0.00	0.00	0.00
12,300.00	90.00	266.21	6,950.00	2,017.85	-4,523.88	4,554.34	0.00	0.00	0.00
12,400.00	90.00	266.21	6,950.00	2,011.24	-4,623.66	4,654.01	0.00	0.00	0.00
12,431.86	90.00	266.21	6,950.00	2,009.13	-4,655.46	4,685.77	0.00	0.00	0.00
TD Well @ 12431.86ft									

## Planning Report

<b>Database:</b>	EDM 5000.16 Single User Db	<b>Local Co-ordinate Reference:</b>	Well GEORGENE 2833-08H
<b>Company:</b>	VERDAD RESOURCES	<b>TVD Reference:</b>	RKB = 24' @ 5042.00usft (RIG)
<b>Project:</b>	WATTENBERG FIELD	<b>MD Reference:</b>	RKB = 24' @ 5042.00usft (RIG)
<b>Site:</b>	2N-64W-28 GEORGENE PAD	<b>North Reference:</b>	True
<b>Well:</b>	GEORGENE 2833-08H	<b>Survey Calculation Method:</b>	Minimum Curvature
<b>Wellbore:</b>	Plan C		
<b>Design:</b>	Design #2		

Casing Points					
Measured Depth (usft)	Vertical Depth (usft)	Name		Casing Diameter (")	Hole Diameter (")
2,410.12	2,328.00	9 5/8"		9-5/8	13-1/2

Plan Annotations					
Measured Depth (usft)	Vertical Depth (usft)	Local Coordinates			
		+N/-S (usft)	+E/-W (usft)	Comment	
201.31	201.31	0.00	0.00	Begin Nudge @ 201.31ft	
1,124.81	1,108.90	135.37	58.75	Hold Tangent @ 1124.81ft	
6,563.72	6,267.65	1,716.03	744.72	KOP @ 6563.72ft :: DLS = 9°/100'	
7,641.35	6,950.00	1,936.15	116.14	End Build @ 7641.35ft	
8,738.52	6,950.00	1,953.00	-980.90	Begin Turn for AC @ 8738.52ft	
9,164.52	6,950.00	1,991.13	-1,404.79	End Turn @ 9164.52ft	
9,964.52	6,950.00	2,121.79	-2,194.05	Begin Turn to BHL @ 9964.52ft	
10,404.28	6,950.00	2,143.25	-2,632.31	End Turn @ 10404.28ft	
12,431.86	6,950.00	2,009.13	-4,655.46	TD Well @ 12431.86ft	