

VERDAD RESOURCES

**WATTENBERG FIELD
2N-64W-28 GEORGENE PAD
GEORGENE 2833-05H**

Plan C

Plan: Design #2

Standard Planning Report

28 July, 2022

Project: WATTENBERG FIELD
Site: 2N-64W-28 GEORGENE PAD
Well: GEORGENE 2833-05H
Wellbore: Plan C
Design: Design #2

VERDAD RESOURCES

CASING DETAILS

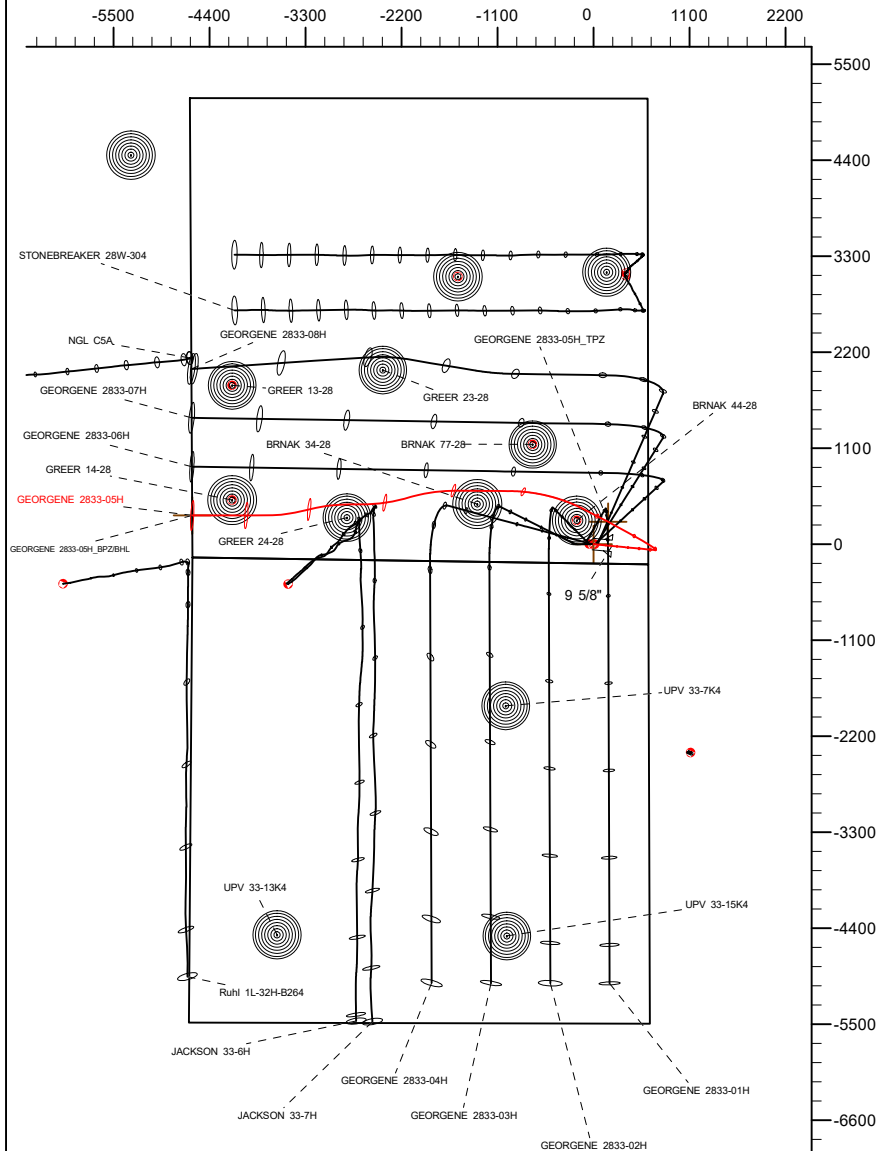
TVD	MD	Name	Size
2328.00	2341.04	9 5/8"	9-5/8

SHL
222' FSL
627' FEL

LP/TPZ
480' FSL
460' FEL

BPZ/BHL
480' FSL
0' FWL

West(-)/East(+) (2200 usft/in)

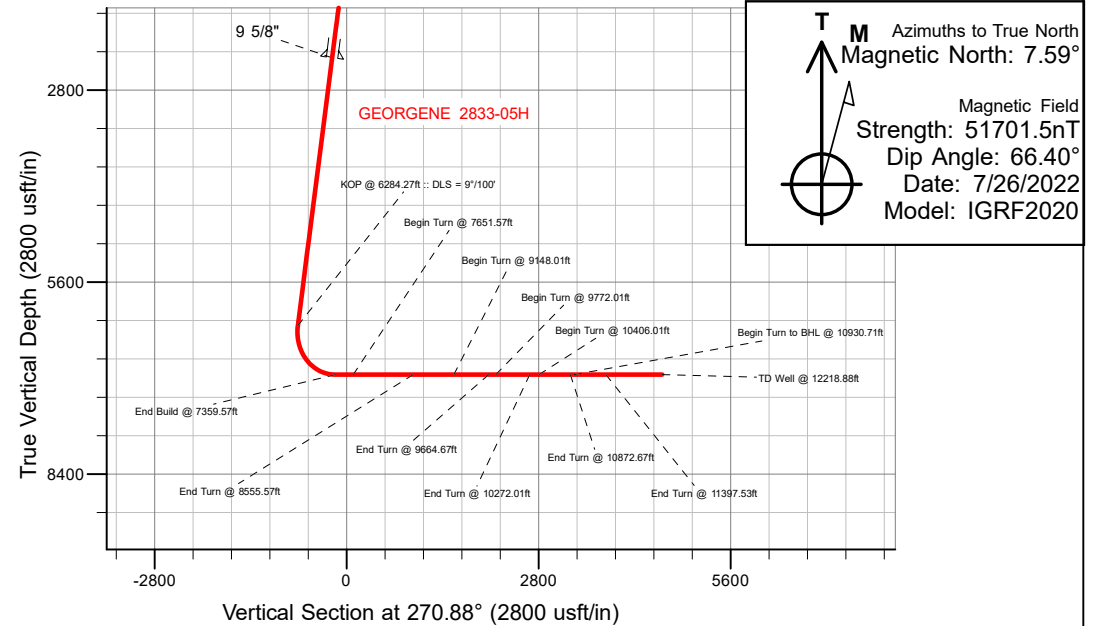


SECTION DETAILS

MD	Inc	Azi	TVD	+N/-S	+E/-W	Dleg	TFace	VSect	Target
0.00	0.00	0.00	0.00	0.00	0.00	0.00	0.00	0.00	
496.59	0.00	0.00	496.59	0.00	0.00	0.00	0.00	0.00	
862.59	7.32	95.46	861.60	-2.22	23.24	2.00	95.46	-23.27	
6284.27	7.32	95.46	6238.09	-67.95	710.89	0.00	0.00	-711.85	
7359.57	90.00	297.62	6950.00	255.65	166.73	9.00	-157.68	-162.78	
7651.57	90.00	297.62	6950.00	391.02	-92.00	0.00	0.00	97.99	
8555.57	90.00	270.50	6950.00	608.59	-960.75	3.00	-90.00	969.99	
9148.01	90.00	270.50	6950.00	613.76	-1553.17	0.00	0.00	1562.41	
9664.67	90.00	255.00	6950.00	548.76	-2064.14	3.00	-90.00	2072.33	
9772.01	90.00	255.00	6950.00	520.98	-2167.82	0.00	0.00	2175.57	
10272.01	90.00	270.00	6950.00	455.90	-2662.13	3.00	90.00	2668.82	
10406.01	90.00	270.00	6950.00	455.90	-2796.13	0.00	0.00	2802.80	
10872.67	90.00	256.00	6950.00	399.17	-3258.16	3.00	-90.00	3263.91	
10930.71	90.00	256.00	6950.00	385.13	-3314.47	0.00	0.00	3320.00	
11397.53	90.00	270.00	6950.00	328.40	-3776.67	3.00	90.00	3781.27	
12218.88	90.00	270.00	6950.00	328.47	-4598.02	0.00	0.00	4602.52	GEORGENE 2833-05H_BPZ/BHL

WELLBORE TARGET DETAILS (LAT/LONG)

Name	TVD	Northing	Easting	Latitude	Longitude
GEORGENE 2833-05H_SHL	0.00	1281682.28	3266017.24	40.102694	-104.549009
GEORGENE 2833-05H_TPZ	6950.00	1281939.70	3266181.08	40.103396	-104.548414
GEORGENE 2833-05H_BPZ/BHL	6950.00	1281961.42	3261415.96	40.103595	-104.565447



WELL DETAILS: GEORGENE 2833-05H

GL = 5018'
RKB = 24' @ 5042.00usft (RIG)

Plan: Design #2 (GEORGENE 2833-05H/Plan C)

Date: 7/29/2022

Planning Report

Database:	EDM 5000.16 Single User Db	Local Co-ordinate Reference:	Well GEORGENE 2833-05H
Company:	VERDAD RESOURCES	TVD Reference:	RKB = 24' @ 5042.00usft (RIG)
Project:	WATTENBERG FIELD	MD Reference:	RKB = 24' @ 5042.00usft (RIG)
Site:	2N-64W-28 GEORGENE PAD	North Reference:	True
Well:	GEORGENE 2833-05H	Survey Calculation Method:	Minimum Curvature
Wellbore:	Plan C		
Design:	Design #2		

Project	WATTENBERG FIELD		
Map System:	US State Plane 1983	System Datum:	Mean Sea Level
Geo Datum:	North American Datum 1983		
Map Zone:	Colorado Northern Zone		

Site	2N-64W-28 GEORGENE PAD			
Site Position:		Northing:	1,281,723.49 usft	Latitude: 40.102807
From:	Lat/Long	Easting:	3,266,028.51 usft	Longitude: -104.548967
Position Uncertainty:	0.00 usft	Slot Radius:	13-3/16 "	

Well	GEORGENE 2833-05H			
Well Position	+N/-S	0.00 usft	Northing:	1,281,682.28 usft
	+E/-W	0.00 usft	Easting:	3,266,017.24 usft
Position Uncertainty		3.28 usft	Wellhead Elevation:	usft
Grid Convergence:		0.61 °	Ground Level:	5,018.00 usft

Wellbore	Plan C				
Magnetics	Model Name	Sample Date	Declination (°)	Dip Angle (°)	Field Strength (nT)
	IGRF202013	7/26/2022	7.59	66.40	51,701.47743047

Design	Design #2				
Audit Notes:					
Version:		Phase:	PLAN	Tie On Depth:	0.00
Vertical Section:	Depth From (TVD) (usft)	+N/-S (usft)	+E/-W (usft)	Direction (°)	
	0.00	0.00	0.00	270.88	

Plan Survey Tool Program		Date	7/28/2022		
Depth From (usft)	Depth To (usft)	Survey (Wellbore)	Tool Name	Remarks	
1	0.00	2,328.00	Design #2 (Plan C)	ISCWSA MWD	
				Fixed:v2:standard declination	
2	2,328.00	12,218.88	Design #2 (Plan C)	ISCWSA MWD	
				Fixed:v2:standard declination	

Planning Report

Database:	EDM 5000.16 Single User Db	Local Co-ordinate Reference:	Well GEORGENE 2833-05H
Company:	VERDAD RESOURCES	TVD Reference:	RKB = 24' @ 5042.00usft (RIG)
Project:	WATTENBERG FIELD	MD Reference:	RKB = 24' @ 5042.00usft (RIG)
Site:	2N-64W-28 GEORGENE PAD	North Reference:	True
Well:	GEORGENE 2833-05H	Survey Calculation Method:	Minimum Curvature
Wellbore:	Plan C		
Design:	Design #2		

Plan Sections										
Measured Depth (usft)	Inclination (°)	Azimuth (°)	Vertical Depth (usft)	+N/-S (usft)	+E/-W (usft)	Dogleg Rate (°/100usft)	Build Rate (°/100usft)	Turn Rate (°/100usft)	TFO (°)	Target
0.00	0.00	0.00	0.00	0.00	0.00	0.00	0.00	0.00	0.00	
496.59	0.00	0.00	496.59	0.00	0.00	0.00	0.00	0.00	0.00	
862.59	7.32	95.46	861.60	-2.22	23.24	2.00	2.00	0.00	95.46	
6,284.27	7.32	95.46	6,239.09	-67.95	710.89	0.00	0.00	0.00	0.00	
7,359.57	90.00	297.62	6,950.00	255.65	166.73	9.00	7.69	-14.68	-157.68	
7,651.57	90.00	297.62	6,950.00	391.02	-92.00	0.00	0.00	0.00	0.00	
8,555.57	90.00	270.50	6,950.00	608.59	-960.75	3.00	0.00	-3.00	-90.00	
9,148.01	90.00	270.50	6,950.00	613.76	-1,553.17	0.00	0.00	0.00	0.00	
9,664.67	90.00	255.00	6,950.00	548.76	-2,064.14	3.00	0.00	-3.00	-90.00	
9,772.01	90.00	255.00	6,950.00	520.98	-2,167.82	0.00	0.00	0.00	0.00	
10,272.01	90.00	270.00	6,950.00	455.90	-2,662.13	3.00	0.00	3.00	90.00	
10,406.01	90.00	270.00	6,950.00	455.90	-2,796.13	0.00	0.00	0.00	0.00	
10,872.67	90.00	256.00	6,950.00	399.17	-3,258.16	3.00	0.00	-3.00	-90.00	
10,930.71	90.00	256.00	6,950.00	385.13	-3,314.47	0.00	0.00	0.00	0.00	
11,397.53	90.00	270.00	6,950.00	328.40	-3,776.67	3.00	0.00	3.00	90.00	
12,218.88	90.00	270.00	6,950.00	328.47	-4,598.02	0.00	0.00	0.00	0.00	GEORGENE 2833-05

Planning Report

Database:	EDM 5000.16 Single User Db	Local Co-ordinate Reference:	Well GEORGENE 2833-05H
Company:	VERDAD RESOURCES	TVD Reference:	RKB = 24' @ 5042.00usft (RIG)
Project:	WATTENBERG FIELD	MD Reference:	RKB = 24' @ 5042.00usft (RIG)
Site:	2N-64W-28 GEORGENE PAD	North Reference:	True
Well:	GEORGENE 2833-05H	Survey Calculation Method:	Minimum Curvature
Wellbore:	Plan C		
Design:	Design #2		

Planned Survey									
Measured Depth (usft)	Inclination (°)	Azimuth (°)	Vertical Depth (usft)	+N/-S (usft)	+E/-W (usft)	Vertical Section (usft)	Dogleg Rate (°/100usft)	Build Rate (°/100usft)	Turn Rate (°/100usft)
0.00	0.00	0.00	0.00	0.00	0.00	0.00	0.00	0.00	0.00
100.00	0.00	0.00	100.00	0.00	0.00	0.00	0.00	0.00	0.00
200.00	0.00	0.00	200.00	0.00	0.00	0.00	0.00	0.00	0.00
300.00	0.00	0.00	300.00	0.00	0.00	0.00	0.00	0.00	0.00
400.00	0.00	0.00	400.00	0.00	0.00	0.00	0.00	0.00	0.00
496.59	0.00	0.00	496.59	0.00	0.00	0.00	0.00	0.00	0.00
Begin Nudge @ 496.59ft									
500.00	0.07	95.46	500.00	0.00	0.00	0.00	2.00	2.00	0.00
600.00	2.07	95.46	599.98	-0.18	1.86	-1.86	2.00	2.00	0.00
700.00	4.07	95.46	699.83	-0.69	7.19	-7.20	2.00	2.00	0.00
800.00	6.07	95.46	799.43	-1.53	15.98	-16.00	2.00	2.00	0.00
862.59	7.32	95.46	861.60	-2.22	23.24	-23.27	2.00	2.00	0.00
Hold Tangent @ 862.59ft									
900.00	7.32	95.46	898.70	-2.68	27.99	-28.02	0.00	0.00	0.00
1,000.00	7.32	95.46	997.89	-3.89	40.67	-40.73	0.00	0.00	0.00
1,100.00	7.32	95.46	1,097.07	-5.10	53.35	-53.43	0.00	0.00	0.00
1,200.00	7.32	95.46	1,196.26	-6.31	66.04	-66.13	0.00	0.00	0.00
1,300.00	7.32	95.46	1,295.44	-7.52	78.72	-78.83	0.00	0.00	0.00
1,400.00	7.32	95.46	1,394.63	-8.74	91.40	-91.53	0.00	0.00	0.00
1,500.00	7.32	95.46	1,493.81	-9.95	104.09	-104.23	0.00	0.00	0.00
1,600.00	7.32	95.46	1,593.00	-11.16	116.77	-116.93	0.00	0.00	0.00
1,700.00	7.32	95.46	1,692.18	-12.37	129.45	-129.63	0.00	0.00	0.00
1,800.00	7.32	95.46	1,791.37	-13.59	142.14	-142.33	0.00	0.00	0.00
1,900.00	7.32	95.46	1,890.55	-14.80	154.82	-155.03	0.00	0.00	0.00
2,000.00	7.32	95.46	1,989.74	-16.01	167.50	-167.73	0.00	0.00	0.00
2,100.00	7.32	95.46	2,088.92	-17.22	180.19	-180.43	0.00	0.00	0.00
2,200.00	7.32	95.46	2,188.11	-18.44	192.87	-193.13	0.00	0.00	0.00
2,300.00	7.32	95.46	2,287.29	-19.65	205.55	-205.83	0.00	0.00	0.00
2,341.04	7.32	95.46	2,328.00	-20.15	210.76	-211.04	0.00	0.00	0.00
9 5/8"									
2,400.00	7.32	95.46	2,386.48	-20.86	218.24	-218.53	0.00	0.00	0.00
2,500.00	7.32	95.46	2,485.66	-22.07	230.92	-231.23	0.00	0.00	0.00
2,600.00	7.32	95.46	2,584.85	-23.28	243.60	-243.93	0.00	0.00	0.00
2,700.00	7.32	95.46	2,684.03	-24.50	256.29	-256.63	0.00	0.00	0.00
2,800.00	7.32	95.46	2,783.22	-25.71	268.97	-269.33	0.00	0.00	0.00
2,900.00	7.32	95.46	2,882.40	-26.92	281.65	-282.03	0.00	0.00	0.00
3,000.00	7.32	95.46	2,981.59	-28.13	294.34	-294.73	0.00	0.00	0.00
3,100.00	7.32	95.46	3,080.77	-29.35	307.02	-307.43	0.00	0.00	0.00
3,200.00	7.32	95.46	3,179.96	-30.56	319.70	-320.13	0.00	0.00	0.00
3,300.00	7.32	95.46	3,279.14	-31.77	332.39	-332.83	0.00	0.00	0.00
3,400.00	7.32	95.46	3,378.33	-32.98	345.07	-345.53	0.00	0.00	0.00
3,500.00	7.32	95.46	3,477.51	-34.20	357.75	-358.23	0.00	0.00	0.00
3,600.00	7.32	95.46	3,576.70	-35.41	370.44	-370.94	0.00	0.00	0.00
3,700.00	7.32	95.46	3,675.88	-36.62	383.12	-383.64	0.00	0.00	0.00
3,800.00	7.32	95.46	3,775.07	-37.83	395.80	-396.34	0.00	0.00	0.00
3,900.00	7.32	95.46	3,874.25	-39.04	408.49	-409.04	0.00	0.00	0.00
4,000.00	7.32	95.46	3,973.44	-40.26	421.17	-421.74	0.00	0.00	0.00
4,100.00	7.32	95.46	4,072.62	-41.47	433.85	-434.44	0.00	0.00	0.00
4,200.00	7.32	95.46	4,171.81	-42.68	446.53	-447.14	0.00	0.00	0.00
4,300.00	7.32	95.46	4,270.99	-43.89	459.22	-459.84	0.00	0.00	0.00
4,400.00	7.32	95.46	4,370.18	-45.11	471.90	-472.54	0.00	0.00	0.00
4,500.00	7.32	95.46	4,469.36	-46.32	484.58	-485.24	0.00	0.00	0.00
4,600.00	7.32	95.46	4,568.55	-47.53	497.27	-497.94	0.00	0.00	0.00

Planning Report

Database:	EDM 5000.16 Single User Db	Local Co-ordinate Reference:	Well GEORGENE 2833-05H
Company:	VERDAD RESOURCES	TVD Reference:	RKB = 24' @ 5042.00usft (RIG)
Project:	WATTENBERG FIELD	MD Reference:	RKB = 24' @ 5042.00usft (RIG)
Site:	2N-64W-28 GEORGENE PAD	North Reference:	True
Well:	GEORGENE 2833-05H	Survey Calculation Method:	Minimum Curvature
Wellbore:	Plan C		
Design:	Design #2		

Planned Survey									
Measured Depth (usft)	Inclination (°)	Azimuth (°)	Vertical Depth (usft)	+N/-S (usft)	+E/-W (usft)	Vertical Section (usft)	Dogleg Rate (°/100usft)	Build Rate (°/100usft)	Turn Rate (°/100usft)
4,700.00	7.32	95.46	4,667.73	-48.74	509.95	-510.64	0.00	0.00	0.00
4,800.00	7.32	95.46	4,766.92	-49.96	522.63	-523.34	0.00	0.00	0.00
4,900.00	7.32	95.46	4,866.10	-51.17	535.32	-536.04	0.00	0.00	0.00
5,000.00	7.32	95.46	4,965.29	-52.38	548.00	-548.74	0.00	0.00	0.00
5,100.00	7.32	95.46	5,064.47	-53.59	560.68	-561.44	0.00	0.00	0.00
5,200.00	7.32	95.46	5,163.66	-54.81	573.37	-574.14	0.00	0.00	0.00
5,300.00	7.32	95.46	5,262.84	-56.02	586.05	-586.84	0.00	0.00	0.00
5,400.00	7.32	95.46	5,362.03	-57.23	598.73	-599.54	0.00	0.00	0.00
5,500.00	7.32	95.46	5,461.21	-58.44	611.42	-612.24	0.00	0.00	0.00
5,600.00	7.32	95.46	5,560.40	-59.65	624.10	-624.94	0.00	0.00	0.00
5,700.00	7.32	95.46	5,659.58	-60.87	636.78	-637.64	0.00	0.00	0.00
5,800.00	7.32	95.46	5,758.77	-62.08	649.47	-650.34	0.00	0.00	0.00
5,900.00	7.32	95.46	5,857.95	-63.29	662.15	-663.04	0.00	0.00	0.00
6,000.00	7.32	95.46	5,957.14	-64.50	674.83	-675.74	0.00	0.00	0.00
6,100.00	7.32	95.46	6,056.32	-65.72	687.52	-688.45	0.00	0.00	0.00
6,200.00	7.32	95.46	6,155.51	-66.93	700.20	-701.15	0.00	0.00	0.00
6,284.27	7.32	95.46	6,239.09	-67.95	710.89	-711.85	0.00	0.00	0.00
KOP @ 6284.27ft :: DLS = 9°/100'									
6,300.00	6.03	90.34	6,254.71	-68.05	712.71	-713.67	9.00	-8.17	-32.56
6,350.00	2.90	44.87	6,304.57	-67.17	716.24	-717.18	9.00	-6.26	-90.94
6,400.00	4.57	334.89	6,354.48	-64.46	716.28	-717.19	9.00	3.34	-139.96
6,450.00	8.60	316.32	6,404.15	-59.95	712.86	-713.69	9.00	8.04	-37.15
6,500.00	12.94	309.80	6,453.26	-53.67	705.97	-706.71	9.00	8.68	-13.03
6,550.00	17.36	306.54	6,501.51	-45.64	695.68	-696.29	9.00	8.84	-6.52
6,600.00	21.81	304.58	6,548.61	-35.92	682.03	-682.50	9.00	8.90	-3.93
6,650.00	26.28	303.25	6,594.26	-24.58	665.12	-665.42	9.00	8.94	-2.65
6,700.00	30.75	302.29	6,638.18	-11.68	645.05	-645.15	9.00	8.95	-1.92
6,750.00	35.23	301.55	6,680.11	2.71	621.94	-621.82	9.00	8.96	-1.48
6,800.00	39.72	300.96	6,719.78	18.48	595.94	-595.58	9.00	8.97	-1.18
6,850.00	44.21	300.48	6,756.95	35.55	567.20	-566.58	9.00	8.98	-0.98
6,900.00	48.70	300.06	6,791.38	53.81	535.90	-535.01	9.00	8.98	-0.83
6,950.00	53.19	299.70	6,822.88	73.14	502.24	-501.06	9.00	8.98	-0.72
7,000.00	57.68	299.38	6,851.24	93.43	466.43	-464.94	9.00	8.98	-0.64
7,050.00	62.17	299.09	6,876.29	114.56	428.68	-426.87	9.00	8.99	-0.58
7,100.00	66.67	298.82	6,897.87	136.38	389.22	-387.08	9.00	8.99	-0.54
7,150.00	71.16	298.57	6,915.85	158.77	348.31	-345.83	9.00	8.99	-0.50
7,200.00	75.66	298.33	6,930.13	181.59	306.19	-303.36	9.00	8.99	-0.47
7,250.00	80.15	298.10	6,940.60	204.70	263.12	-259.94	9.00	8.99	-0.46
7,300.00	84.65	297.88	6,947.21	227.95	219.37	-215.84	9.00	8.99	-0.44
7,350.00	89.14	297.66	6,949.92	251.21	175.20	-171.32	9.00	8.99	-0.44
7,359.57	90.00	297.62	6,950.00	255.65	166.73	-162.78	9.00	8.99	-0.44
End Build @ 7359.57ft									
7,400.00	90.00	297.62	6,950.00	274.39	130.90	-126.67	0.00	0.00	0.00
7,500.00	90.00	297.62	6,950.00	320.75	42.30	-37.37	0.00	0.00	0.00
7,600.00	90.00	297.62	6,950.00	367.12	-46.31	51.94	0.00	0.00	0.00
7,651.57	90.00	297.62	6,950.00	391.02	-92.00	97.99	0.00	0.00	0.00
Begin Turn @ 7651.57ft									
7,700.00	90.00	296.17	6,950.00	412.93	-135.19	141.52	3.00	0.00	-3.00
7,800.00	90.00	293.17	6,950.00	454.66	-226.06	233.01	3.00	0.00	-3.00
7,900.00	90.00	290.17	6,950.00	491.58	-318.98	326.49	3.00	0.00	-3.00
8,000.00	90.00	287.17	6,950.00	523.58	-413.71	421.70	3.00	0.00	-3.00
8,100.00	90.00	284.17	6,950.00	550.58	-509.98	518.38	3.00	0.00	-3.00
8,200.00	90.00	281.17	6,950.00	572.51	-607.54	616.26	3.00	0.00	-3.00

Planning Report

Database:	EDM 5000.16 Single User Db	Local Co-ordinate Reference:	Well GEORGENE 2833-05H
Company:	VERDAD RESOURCES	TVD Reference:	RKB = 24' @ 5042.00usft (RIG)
Project:	WATTENBERG FIELD	MD Reference:	RKB = 24' @ 5042.00usft (RIG)
Site:	2N-64W-28 GEORGENE PAD	North Reference:	True
Well:	GEORGENE 2833-05H	Survey Calculation Method:	Minimum Curvature
Wellbore:	Plan C		
Design:	Design #2		

Planned Survey									
Measured Depth (usft)	Inclination (°)	Azimuth (°)	Vertical Depth (usft)	+N/-S (usft)	+E/-W (usft)	Vertical Section (usft)	Dogleg Rate (°/100usft)	Build Rate (°/100usft)	Turn Rate (°/100usft)
8,300.00	90.00	278.17	6,950.00	589.30	-706.11	715.07	3.00	0.00	-3.00
8,400.00	90.00	275.17	6,950.00	600.91	-805.42	814.55	3.00	0.00	-3.00
8,500.00	90.00	272.17	6,950.00	607.30	-905.20	914.42	3.00	0.00	-3.00
8,555.57	90.00	270.50	6,950.00	608.59	-960.75	969.99	3.00	0.00	-3.00
End Turn @ 8555.57ft									
8,600.00	90.00	270.50	6,950.00	608.98	-1,005.18	1,014.42	0.00	0.00	0.00
8,700.00	90.00	270.50	6,950.00	609.85	-1,105.18	1,114.42	0.00	0.00	0.00
8,800.00	90.00	270.50	6,950.00	610.73	-1,205.18	1,214.41	0.00	0.00	0.00
8,900.00	90.00	270.50	6,950.00	611.60	-1,305.17	1,314.41	0.00	0.00	0.00
9,000.00	90.00	270.50	6,950.00	612.47	-1,405.17	1,414.41	0.00	0.00	0.00
9,100.00	90.00	270.50	6,950.00	613.34	-1,505.16	1,514.41	0.00	0.00	0.00
9,148.01	90.00	270.50	6,950.00	613.76	-1,553.17	1,562.41	0.00	0.00	0.00
Begin Turn @ 9148.01ft									
9,200.00	90.00	268.94	6,950.00	613.51	-1,605.16	1,614.39	3.00	0.00	-3.00
9,300.00	90.00	265.94	6,950.00	609.04	-1,705.05	1,714.20	3.00	0.00	-3.00
9,400.00	90.00	262.94	6,950.00	599.36	-1,804.57	1,813.56	3.00	0.00	-3.00
9,500.00	90.00	259.94	6,950.00	584.47	-1,903.44	1,912.19	3.00	0.00	-3.00
9,600.00	90.00	256.94	6,950.00	564.44	-2,001.40	2,009.84	3.00	0.00	-3.00
9,664.67	90.00	255.00	6,950.00	548.76	-2,064.14	2,072.33	3.00	0.00	-3.00
End Turn @ 9664.67ft									
9,700.00	90.00	255.00	6,950.00	539.62	-2,098.27	2,106.31	0.00	0.00	0.00
9,772.01	90.00	255.00	6,950.00	520.98	-2,167.82	2,175.57	0.00	0.00	0.00
Begin Turn @ 9772.01ft									
9,800.00	90.00	255.84	6,950.00	513.93	-2,194.91	2,202.55	3.00	0.00	3.00
9,900.00	90.00	258.84	6,950.00	492.02	-2,292.47	2,299.76	3.00	0.00	3.00
10,000.00	90.00	261.84	6,950.00	475.24	-2,391.04	2,398.06	3.00	0.00	3.00
10,100.00	90.00	264.84	6,950.00	463.64	-2,490.35	2,497.18	3.00	0.00	3.00
10,200.00	90.00	267.84	6,950.00	457.26	-2,590.14	2,596.86	3.00	0.00	3.00
10,272.01	90.00	270.00	6,950.00	455.90	-2,662.13	2,668.82	3.00	0.00	3.00
End Turn @ 10272.01ft									
10,300.00	90.00	270.00	6,950.00	455.90	-2,690.12	2,696.81	0.00	0.00	0.00
10,406.01	90.00	270.00	6,950.00	455.90	-2,796.13	2,802.80	0.00	0.00	0.00
Begin Turn @ 10406.01ft									
10,500.00	90.00	267.18	6,950.00	453.59	-2,890.08	2,896.71	3.00	0.00	-3.00
10,600.00	90.00	264.18	6,950.00	446.06	-2,989.79	2,996.29	3.00	0.00	-3.00
10,700.00	90.00	261.18	6,950.00	433.32	-3,088.96	3,095.25	3.00	0.00	-3.00
10,800.00	90.00	258.18	6,950.00	415.41	-3,187.33	3,193.34	3.00	0.00	-3.00
10,872.67	90.00	256.00	6,950.00	399.17	-3,258.16	3,263.91	3.00	0.00	-3.00
End Turn @ 10872.67ft									
10,900.00	90.00	256.00	6,950.00	392.56	-3,284.68	3,290.32	0.00	0.00	0.00
10,930.71	90.00	256.00	6,950.00	385.13	-3,314.47	3,320.00	0.00	0.00	0.00
Begin Turn to BHL @ 10930.71ft									
11,000.00	90.00	258.08	6,950.00	369.59	-3,382.00	3,387.28	3.00	0.00	3.00
11,100.00	90.00	261.08	6,950.00	351.51	-3,480.34	3,485.33	3.00	0.00	3.00
11,200.00	90.00	264.08	6,950.00	338.59	-3,579.49	3,584.27	3.00	0.00	3.00
11,300.00	90.00	267.08	6,950.00	330.88	-3,679.18	3,683.83	3.00	0.00	3.00
11,397.53	90.00	270.00	6,950.00	328.40	-3,776.67	3,781.27	3.00	0.00	3.00
End Turn @ 11397.53ft									
11,400.00	90.00	270.00	6,950.00	328.40	-3,779.14	3,783.74	0.00	0.00	0.00
11,500.00	90.00	270.00	6,950.00	328.41	-3,879.14	3,883.72	0.00	0.00	0.00
11,600.00	90.00	270.00	6,950.00	328.42	-3,979.14	3,983.71	0.00	0.00	0.00
11,700.00	90.00	270.00	6,950.00	328.43	-4,079.14	4,083.70	0.00	0.00	0.00
11,800.00	90.00	270.00	6,950.00	328.43	-4,179.14	4,183.69	0.00	0.00	0.00

Planning Report

Database:	EDM 5000.16 Single User Db	Local Co-ordinate Reference:	Well GEORGENE 2833-05H
Company:	VERDAD RESOURCES	TVD Reference:	RKB = 24' @ 5042.00usft (RIG)
Project:	WATTENBERG FIELD	MD Reference:	RKB = 24' @ 5042.00usft (RIG)
Site:	2N-64W-28 GEORGENE PAD	North Reference:	True
Well:	GEORGENE 2833-05H	Survey Calculation Method:	Minimum Curvature
Wellbore:	Plan C		
Design:	Design #2		

Planned Survey									
Measured Depth (usft)	Inclination (°)	Azimuth (°)	Vertical Depth (usft)	+N/-S (usft)	+E/-W (usft)	Vertical Section (usft)	Dogleg Rate (°/100usft)	Build Rate (°/100usft)	Turn Rate (°/100usft)
11,900.00	90.00	270.00	6,950.00	328.44	-4,279.14	4,283.68	0.00	0.00	0.00
12,000.00	90.00	270.00	6,950.00	328.45	-4,379.14	4,383.67	0.00	0.00	0.00
12,100.00	90.00	270.00	6,950.00	328.46	-4,479.14	4,483.65	0.00	0.00	0.00
12,200.00	90.00	270.00	6,950.00	328.47	-4,579.14	4,583.64	0.00	0.00	0.00
12,218.88	90.00	270.00	6,950.00	328.47	-4,598.02	4,602.52	0.00	0.00	0.00
TD Well @ 12218.88ft									

Casing Points				
Measured Depth (usft)	Vertical Depth (usft)	Name	Casing Diameter (")	Hole Diameter (")
2,341.04	2,328.00	9 5/8"	9-5/8	13-1/2

Plan Annotations				
Measured Depth (usft)	Vertical Depth (usft)	Local Coordinates		Comment
		+N/-S (usft)	+E/-W (usft)	
496.59	496.59	0.00	0.00	Begin Nudge @ 496.59ft
862.59	861.60	-2.22	23.24	Hold Tangent @ 862.59ft
6,284.27	6,239.09	-67.95	710.89	KOP @ 6284.27ft :: DLS = 9°/100'
7,359.57	6,950.00	255.65	166.73	End Build @ 7359.57ft
7,651.57	6,950.00	391.02	-92.00	Begin Turn @ 7651.57ft
8,555.57	6,950.00	608.59	-960.75	End Turn @ 8555.57ft
9,148.01	6,950.00	613.76	-1,553.17	Begin Turn @ 9148.01ft
9,664.67	6,950.00	548.76	-2,064.14	End Turn @ 9664.67ft
9,772.01	6,950.00	520.98	-2,167.82	Begin Turn @ 9772.01ft
10,272.01	6,950.00	455.90	-2,662.13	End Turn @ 10272.01ft
10,406.01	6,950.00	455.90	-2,796.13	Begin Turn @ 10406.01ft
10,872.67	6,950.00	399.17	-3,258.16	End Turn @ 10872.67ft
10,930.71	6,950.00	385.13	-3,314.47	Begin Turn to BHL @ 10930.71ft
11,397.53	6,950.00	328.40	-3,776.67	End Turn @ 11397.53ft
12,218.88	6,950.00	328.47	-4,598.02	TD Well @ 12218.88ft