

OIL AND GAS CONSERVATION COMMISSION
OF THE STATE OF COLORADO

RECEIVED 16
SEP 09 1971



COLO. OIL & GAS CONS. COMM.

5. LEASE DESIGNATION AND SERIAL NO.

Colorado 69/7211-S

6. IF INDIAN, ALLOTTEE OR TRIBE NAME

7. UNIT AGREEMENT NAME

8. FARM OR LEASE NAME

Colorado 34-3-59

9. WELL NO.

4

10. FIELD AND POOL, OR WILDCAT

Poncho

11. SEC., T., R., M., OR BLK. AND SURVEY OR AREA

Sec 34 - T3S - R59W

12. COUNTY OR PARISH 13. STATE

Adams

Colorado

1a. TYPE OF WORK

DRILL

DEEPEN

PLUG BACK

b. TYPE OF WELL

OIL WELL

GAS WELL

OTHER

SINGLE ZONE

MULTIPLE ZONE

2. NAME OF OPERATOR

Midwest Oil Corporation

3. ADDRESS OF OPERATOR

1700 Broadway, Denver, Colorado 80202

4. LOCATION OF WELL (Report location clearly and in accordance with any State requirements.)

At surface

200' West of Center of SE SE Sec 34, T3S, R59W (851' W of EL & 620' N. of SL of Sec 34)

At proposed prod. zone

Same

80 acre drilling unit - S/2 SE/4

14. DISTANCE IN MILES AND DIRECTION FROM NEAREST TOWN OR POST OFFICE

3 miles East of Cabin Creek

15. DISTANCE FROM PROPOSED LOCATION TO NEAREST PROPERTY OR LEASE LINE, FT. (Also to nearest drlg. line, if any)

620'

16. NO. OF ACRES IN LEASE

520

17. NO. OF ACRES ASSIGNED TO THIS WELL

80

18. DISTANCE FROM PROPOSED LOCATION TO NEAREST WELL, DRILLING, COMPLETED, OR APPLIED FOR, ON THIS LEASE, FT.

1677' NW

19. PROPOSED DEPTH

6175'

20. ROTARY OR CABLE TOOLS

Rotary

21. ELEVATIONS (Show whether DF, RT, GR, etc.)

5029 GL

22. APPROX. DATE WORK WILL START

September 30, 1971

23.

PROPOSED CASING AND CEMENTING PROGRAM

SIZE OF HOLE	SIZE OF CASING	WEIGHT PER FOOT	SETTING DEPTH	QUANTITY OF CEMENT
12-1/4	8-7/8	24.0	375	300 sax
7-7/8	5-1/2	15.5	6175	200 sax

Welded
DVR
FIP
HMM
JAM
UD 9/30/71

OK - 9463

Proposed program:

1. Set surface csg, as above, and cement to the surface.
2. Before drilling surface plug: Install BOP and test surface casing & BOP according to Conservation Commission rules.
3. Drill to T.D., coring & testing as necessary.
4. AT T.D. run electric logs:
 - a) If production is indicated, run csg as above and complete.
 - b) If dry, plug & abandon according to Conservation Commission rules.

IN ABOVE SPACE DESCRIBE PROPOSED PROGRAM: If proposal is to deepen or plug back, give data on present productive zone and proposed new productive zone. If proposal is to drill or deepen directionally, give pertinent data on subsurface locations and measured and true vertical depths. Give blowout preventer program, if any.

24.

SIGNED

J.R. Nolan

J. R. Nolan

TITLE

District Engineer

DATE

September 29, 1971

(This space for Federal or State office use)

PERMIT NO.

71 752

APPROVAL DATE

DIRECTOR

APPROVED BY

M. Rogers

O & G CONS. COMM.

DATE

SEP 30 1971

CONDITIONS OF APPROVAL, IF ANY:

A.P.I. NUMBER
05 001 6366

See Instructions On Reverse Side

71-752

CERTIFICATE OF SURVEY
 for
 Midwest Oil Corp.
 Adams County, Colorado
 N 89° 41' W 5205'

RECEIVED

SEP 30 1971

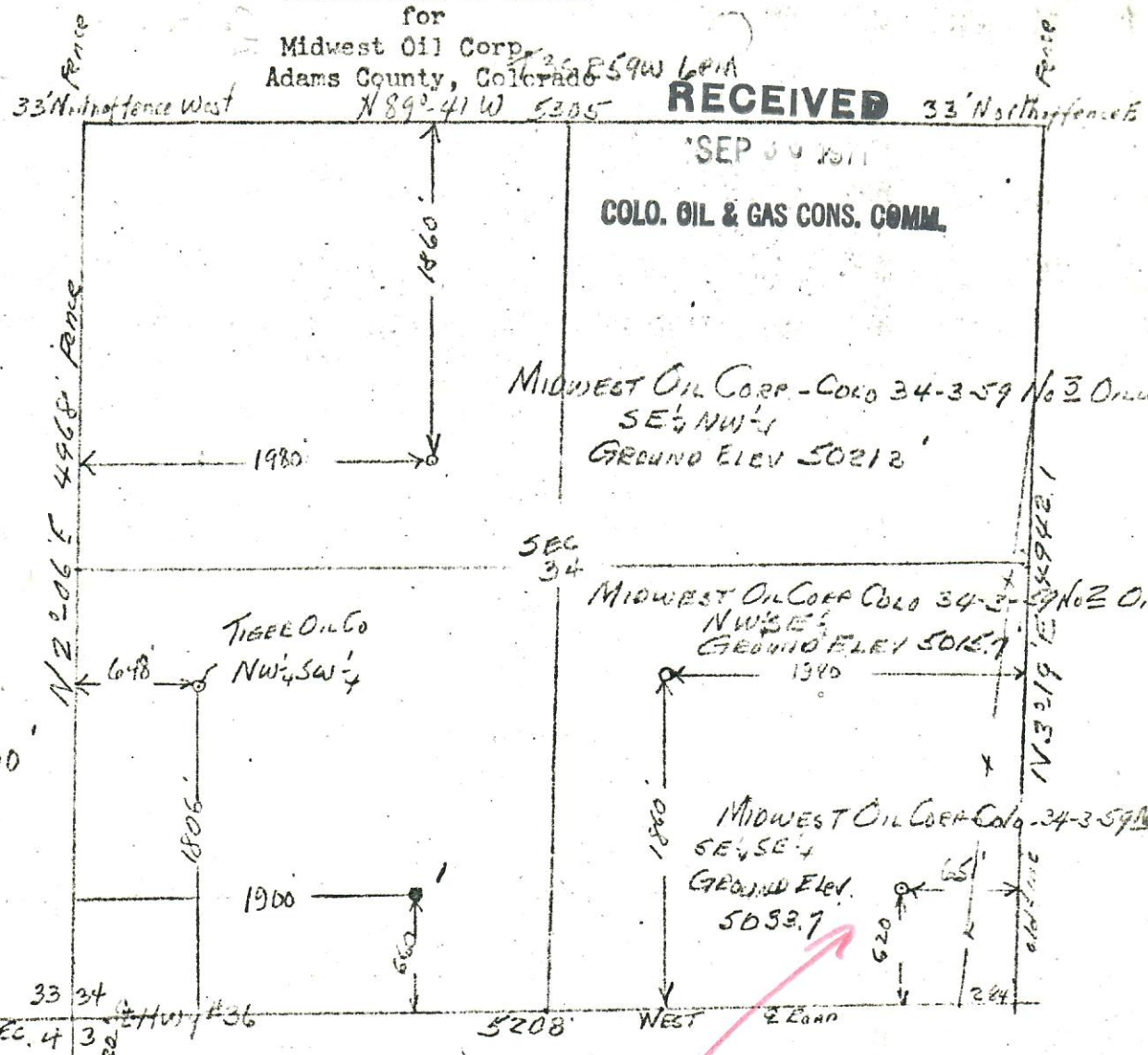
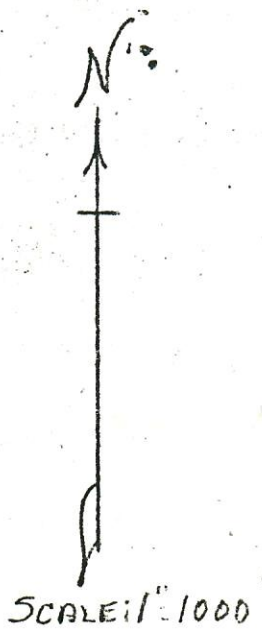
COLO. OIL & GAS CONS. COMM.

MIDWEST OIL CORP. - COLO 34-3-59 No 3 Oilwell
 SE 1/4 NW 1/4
 GROUND ELEV 5021.3'

MIDWEST OIL CORP. COLO 34-3-59 No 2 Oilwell
 NW 1/4 SE 1/4
 GROUND ELEV 5015.7'

MIDWEST OIL CORP. COLO 34-3-59 No 4 Oilwell
 SE 1/4 SE 1/4
 GROUND ELEV 5033.7'

TIGER OIL CO
 NW 1/4 SW 1/4



I hereby certify that the above plat is an accurate representation of a correct survey showing the location of Midwest Oil Corp.-Colorado 34-3-59 No. ___ Oilwell in SENW Sec. 34 T3S R59W 6PM, ground elevation 5021.3 feet: Midwest Oil Corp.-Colorado 34-3-59 No. ___ Oilwell in NWSE Sec. 34 T3S R59W 6PM, ground elevation 5015.7 feet: Midwest Oil Corp.-Colorado 34-3-59 No. ___ Oilwell in SESE Sec. 34 T3S R59W 6PM, ground elevation 5033.7 feet above sea level from U.S.C.&G. Bench Mark. Also location of Tiger Oil Co. in NWSW Sec. 34 T3S R59W 6PM, and location by triangulation of producing wells in Sec. 3 and 4 T4S R59W 6PM using the south line of Sec. 34 T3S R59W 6PM as a base line running east and west.

Fort Morgan, Colorado
 July 18, 1971

Richard J. Osborne
 Registered Professional Engineer
 State of Colorado

NOTE: - Location Tiger Oil Co. Wells
 By TRIANGULATION using 500' Triangulation
 Side of Sec 34 as base line Easting 1750'

Assume N 20 1/2 E
 Bearing this section line
 Not determined

