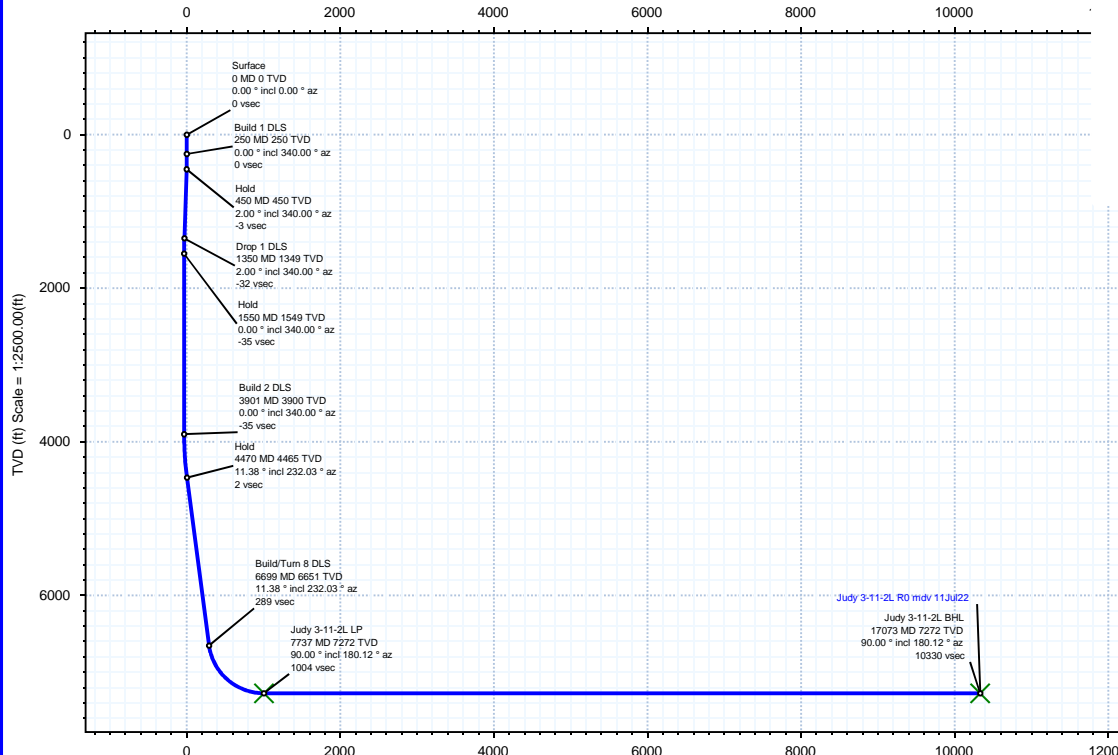


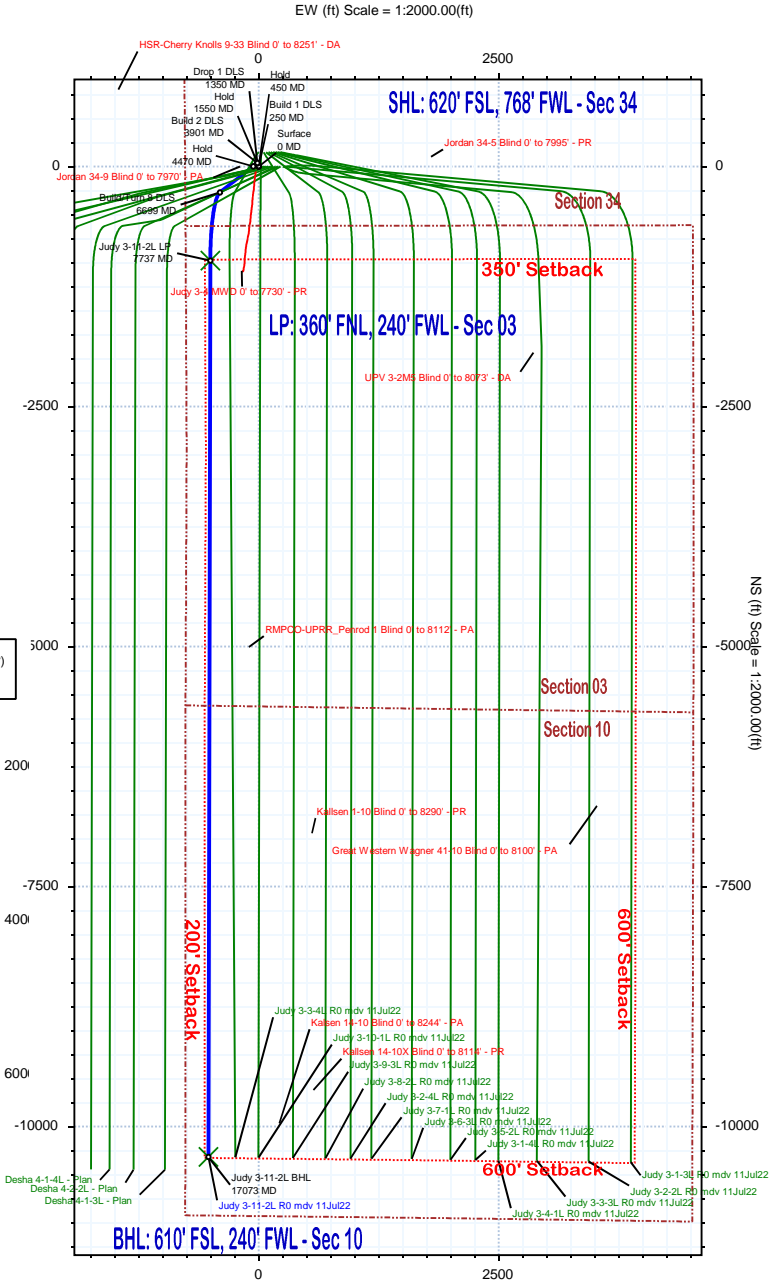
Borehole:	Well:	Field:	Structure:
Original Hole	Judy 3-11-2L	CO, Weld County (NAD 83 NZ) - 2019	Confluence 34-01N-65W (Judy 34 Pad)

Gravity & Magnetic Parameters	Surface Location	NAD83 Colorado State Plane, Northern Zone, US Feet	Miscellaneous
Model: HDGM 2022 Dip: 66.209° Date: 11-Jul-2022	Lat: N 40 0 8.10 Northing: 1244789.5ftUS Grid Conv: 0.5448°	Lon: W 104 39 24.52 Easting: 3236211.35ftUS Scale Fact: 0.9999662	Slot: Judy 3-11-2L TVD Ref: KB = 23ft(5157ft above MSL)
MagDec: 7.885° FS: 51570.998T Gravity FS: 998.981mgn (9.80665 Based)			Plan: Judy 3-11-2L R0 mdv 11Jul22

Surface Location									
Northing: 1244789.49589528		Easting: 3236211.35276675		Latitude: N 40 0 8.10		Longitude: W 104 39 24.52		VSec Azimuth: 182.91	
Target Description		Grid Coord						Local Coord	
Target Name	Latitude	Longitude	Northing	Easting	TVD	VSec	N(+)/S(-)	E(+)/W(-)	
Judy 34 Pad Sec 03-10 - Setback	N 40 0 8.10	W 104 39 20.92	1244792.16	3236491.48	5157.00	-14.22	0.00	280.15	
Judy 34 Pad Sec 03-10 - CL	N 40 0 8.10	W 104 39 20.92	1244792.16	3236491.48	5157.00	-14.22	0.00	280.15	
Judy 34 Pad Sec 03-10	N 40 0 8.10	W 104 39 20.92	1244792.16	3236491.48	5157.00	-14.22	0.00	280.15	
Judy 3-11-2L BHL	N 39 58 26.15	W 104 39 31.25	1234468.76	3235785.38	7272.00	10329.89	-10316.59	-524.11	
Judy 3-11-2L LP	N 39 59 58.42	W 104 39 31.00	1243804.85	3235716.41	7272.00	1004.25	-979.93	-504.30	
Critical Points									
Critical Point	MD	INCL	AZIM	TVD	VSEC	N(+)/S(-)	E(+)/W(-)	DLS	
Surface	0.00	0.00	0.00	0.00	0.00	0.00	0.00	0.00	
Build 1 DLS	250.00	0.00	340.00	250.00	0.00	0.00	0.00	0.00	
Hold	450.00	2.00	340.00	449.96	-3.22	3.28	-1.19	1.00	
Drop 1 DLS	1350.00	2.00	340.00	1349.41	-32.15	32.80	-11.94	0.00	
Hold	1550.00	0.00	340.00	1549.37	-35.36	36.07	-13.13	1.00	
Build 2 DLS	3900.63	0.00	340.00	3900.00	-35.36	36.07	-13.13	0.00	
Hold	4469.74	11.38	232.03	4465.37	1.51	1.41	-57.55	2.00	
Build/Turn 8 DLS	6698.96	11.38	232.03	6650.75	289.44	-269.27	-404.36	0.00	
Judy 3-11-2L LP	7736.54	90.00	180.12	7272.00	1004.25	-979.93	-504.30	8.00	
Judy 3-11-2L BHL	17073.23	90.00	180.12	7272.00	10329.89	-10316.59	-524.11	0.00	



Vertical Section (ft) Azim = 182.91° Scale = 1:2500.00(ft) Origin = 0N/-S, 0E/-W



NS (ft) Scale = 1:2000.00(ft)

Judy 3-11-2L R0 mdv 11Jul22 Proposal Geodetic Report

(Def Plan)

Report Date: July 13, 2022 - 04:18 PM
Client: Confluence DJ
Field: CO, Weld County (NAD 83 NZ) - 2019
Structure / Slot: Confluence 34-01N-65W (Judy 34 Pad) / Judy 3-11-2L
Well: Judy 3-11-2L
Borehole: Original Hole
UWI / API#: 05-123-47945
Survey Name: Judy 3-11-2L R0 mdv 11Jul22
Survey Date: July 11, 2022
Tort / AHD / DDI / ERD Ratio: 98.389 ° / 10596.837 ft / 6.389 / 1.457
Coordinate Reference System: NAD83 Colorado State Plane, Northern Zone, US Feet
Location Lat / Long: N 40° 0' 8.10000", W 104° 39' 24.51600"
Location Grid N/E Y/X: N 1244789.496 ftUS, E 3236211.353 ftUS
CRS Grid Convergence Angle: 0.5448 °
Grid Scale Factor: 0.9999662
Version / Patch: 2.10.829.1

Survey / DLS Computation: Minimum Curvature / Lubinski
Vertical Section Azimuth: 182.908 ° (True North)
Vertical Section Origin: 0.000 ft, 0.000 ft
TVD Reference Datum: KB = 23ft
TVD Reference Elevation: 5157.000 ft above MSL
Seabed / Ground Elevation: 5134.000 ft above MSL
Magnetic Declination: 7.885 °
Total Gravity Field Strength: 998.9809mgn (9.80665 Based)
Gravity Model: GARM
Total Magnetic Field Strength: 51570.998 nT
Magnetic Dip Angle: 66.209 °
Declination Date: July 11, 2022
Magnetic Declination Model: HDGM 2022
North Reference: True North
Grid Convergence Used: 0.0000 °
Total Corr Mag North->True North: 7.8850 °
Local Coord Referenced To: Well Head

Comments	MD (ft)	Incl (°)	Azim True (°)	TVD (ft)	TVDSS (ft)	VSEC (ft)	NS (ft)	EW (ft)	DLS (°/100ft)	Northing (ftUS)	Easting (ftUS)	Latitude (°)	Longitude (°)
Surface	0.00	0.00	0.00	0.00	-5157.00	0.00	0.00	0.00	N/A	1244789.50	3236211.35	40.002250	-104.656810
Build 1 DLS	100.00	0.00	340.00	100.00	-5057.00	0.00	0.00	0.00	0.00	1244789.50	3236211.35	40.002250	-104.656810
	200.00	0.00	340.00	200.00	-4957.00	0.00	0.00	0.00	0.00	1244789.50	3236211.35	40.002250	-104.656810
	250.00	0.00	340.00	250.00	-4907.00	0.00	0.00	0.00	0.00	1244789.50	3236211.35	40.002250	-104.656810
	300.00	0.50	340.00	300.00	-4857.00	-0.20	0.21	-0.07	1.00	1244789.70	3236211.28	40.002251	-104.656810
	400.00	1.50	340.00	399.98	-4757.02	-1.81	1.84	-0.67	1.00	1244791.33	3236210.66	40.002255	-104.656812
Hold	450.00	2.00	340.00	449.96	-4707.04	-3.22	3.28	-1.19	1.00	1244792.76	3236210.13	40.002259	-104.656814
	500.00	2.00	340.00	499.93	-4657.07	-4.82	4.92	-1.79	0.00	1244794.40	3236209.52	40.002264	-104.656816
	600.00	2.00	340.00	599.87	-4557.13	-8.04	8.20	-2.98	0.00	1244797.67	3236208.29	40.002273	-104.656821
	700.00	2.00	340.00	699.81	-4457.19	-11.25	11.48	-4.18	0.00	1244800.93	3236207.07	40.002282	-104.656825
	800.00	2.00	340.00	799.75	-4357.25	-14.47	14.76	-5.37	0.00	1244804.20	3236205.84	40.002291	-104.656829
	900.00	2.00	340.00	899.69	-4257.31	-17.68	18.04	-6.57	0.00	1244807.47	3236204.62	40.002300	-104.656833
	1000.00	2.00	340.00	999.62	-4157.38	-20.90	21.32	-7.76	0.00	1244810.74	3236203.39	40.002309	-104.656838
	1100.00	2.00	340.00	1099.56	-4057.44	-24.11	24.60	-8.95	0.00	1244814.01	3236202.17	40.002318	-104.656842
	1200.00	2.00	340.00	1199.50	-3957.50	-27.33	27.88	-10.15	0.00	1244817.27	3236200.94	40.002327	-104.656846
	1300.00	2.00	340.00	1300.00	-3857.56	-30.54	31.16	-11.34	0.00	1244820.54	3236199.72	40.002336	-104.656850
Drop 1 DLS	1350.00	2.00	340.00	1349.41	-3807.59	-32.15	32.80	-11.94	0.00	1244822.17	3236199.11	40.002340	-104.656853
	1400.00	1.50	340.00	1399.39	-3757.61	-33.55	34.23	-12.46	1.00	1244823.60	3236198.57	40.002344	-104.656854
	1500.00	0.50	340.00	1499.37	-3657.63	-35.16	35.87	-13.06	1.00	1244825.24	3236197.96	40.002348	-104.656857
	1550.00	0.00	340.00	1549.37	-3607.63	-35.36	36.07	-13.13	1.00	1244825.44	3236197.88	40.002349	-104.656857
	1600.00	0.00	340.00	1599.37	-3557.63	-35.36	36.07	-13.13	0.00	1244825.44	3236197.88	40.002349	-104.656857
Hold	1700.00	0.00	340.00	1699.37	-3457.63	-35.36	36.07	-13.13	0.00	1244825.44	3236197.88	40.002349	-104.656857
	1800.00	0.00	340.00	1799.37	-3357.63	-35.36	36.07	-13.13	0.00	1244825.44	3236197.88	40.002349	-104.656857
	1900.00	0.00	340.00	1899.37	-3257.63	-35.36	36.07	-13.13	0.00	1244825.44	3236197.88	40.002349	-104.656857
	2000.00	0.00	340.00	1999.37	-3157.63	-35.36	36.07	-13.13	0.00	1244825.44	3236197.88	40.002349	-104.656857
	2100.00	0.00	340.00	2099.37	-3057.63	-35.36	36.07	-13.13	0.00	1244825.44	3236197.88	40.002349	-104.656857
	2200.00	0.00	340.00	2199.37	-2957.63	-35.36	36.07	-13.13	0.00	1244825.44	3236197.88	40.002349	-104.656857
	2300.00	0.00	340.00	2299.37	-2857.63	-35.36	36.07	-13.13	0.00	1244825.44	3236197.88	40.002349	-104.656857
	2400.00	0.00	340.00	2399.37	-2757.63	-35.36	36.07	-13.13	0.00	1244825.44	3236197.88	40.002349	-104.656857
	2500.00	0.00	340.00	2499.37	-2657.63	-35.36	36.07	-13.13	0.00	1244825.44	3236197.88	40.002349	-104.656857
	2600.00	0.00	340.00	2599.37	-2557.63	-35.36	36.07	-13.13	0.00	1244825.44	3236197.88	40.002349	-104.656857
	2700.00	0.00	340.00	2699.37	-2457.63	-35.36	36.07	-13.13	0.00	1244825.44	3236197.88	40.002349	-104.656857
	2800.00	0.00	340.00	2799.37	-2357.63	-35.36	36.07	-13.13	0.00	1244825.44	3236197.88	40.002349	-104.656857
	2900.00	0.00	340.00	2899.37	-2257.63	-35.36	36.07	-13.13	0.00	1244825.44	3236197.88	40.002349	-104.656857
	3000.00	0.00	340.00	2999.37	-2157.63	-35.36	36.07	-13.13	0.00	1244825.44	3236197.88	40.002349	-104.656857
	3100.00	0.00	340.00	3099.37	-2057.63	-35.36	36.07	-13.13	0.00	1244825.44	3236197.88	40.002349	-104.656857
	3200.00	0.00	340.00	3199.37	-1957.63	-35.36	36.07	-13.13	0.00	1244825.44	3236197.88	40.002349	-104.656857
	3300.00	0.00	340.00	3299.37	-1857.63	-35.36	36.07	-13.13	0.00	1244825.44	3236197.88	40.002349	-104.656857
	3400.00	0.00	340.00	3399.37	-1757.63	-35.36	36.07	-13.13	0.00	1244825.44	3236197.88	40.002349	-104.656857
	3500.00	0.00	340.00	3499.37	-1657.63	-35.36	36.07	-13.13	0.00	1244825.44	3236197.88	40.002349	-104.656857
	3600.00	0.00	340.00	3599.37	-1557.63	-35.36	36.07	-13.13	0.00	1244825.44	3236197.88	40.002349	-104.656857
Build 2 DLS	3700.00	0.00	340.00	3699.37	-1457.63	-35.36	36.07	-13.13	0.00	1244825.44	3236197.88	40.002349	-104.656857
	3800.00	0.00	340.00	3799.37	-1357.63	-35.36	36.07	-13.13	0.00	1244825.44	3236197.88	40.002349	-104.656857
	3900.00	0.00	340.00	3899.37	-1257.63	-35.36	36.07	-13.13	0.00	1244825.44	3236197.88	40.002349	-104.656857
	3900.63	0.00	340.00	3900.00	-1257.00	-35.36	36.07	-13.13	0.00	1244825.44	3236197.88	40.002349	-104.656857
	4000.00	1.99	232.03	3999.35	-1157.65	-34.23	35.01	-14.49	2.00	1244824.37	3236196.53	40.002346	-104.656862
	4100.00	3.99	232.03	4099.21	-1057.79	-30.82	31.81	-18.60	2.00	1244821.12	3236192.45	40.002337	-104.656876
	4200.00	5.99	232.03	4198.83	-958.17	-25.13	26.46	-25.45	2.00	1244815.71	3236185.65	40.002323	-104.656901
	4300.00	7.99	232.03	4298.08	-858.92	-17.17	18.98	-35.04	2.00	1244808.14	3236176.14	40.002302	-104.656935
	4400.00	9.99	232.03	4396.85	-760.15	-6.95	9.36	-47.35	2.00	1244798.41	3236163.91	40.002276	-104.656979
	4469.74	11.38	232.03	4465.37	-691.63	1.51	1.41	-57.55	2.00	1244790.36	3236153.80	40.002254	-104.657015
Hold	4500.00	11.38	232.03	4495.04	-661.96	5.42	-2.27	-62.25	0.00	1244786.64	3236149.12	40.002244	-104.657032
	4600.00	11.38	232.03	4593.07	-563.93	18.34	-14.41	-77.81	0.00	1244774.35	3236133.68	40.002210	-104.657088
	4700.00	11.38	232.03	4691.11	-465.89	31.25	-26.55	-93.37	0.00	1244762.06	3236118.24	40.002177	-104.657143
	4800.00	11.38	232.03	4789.14	-367.86	44.17	-38.69	-108.93	0.00	1244749.77	3236102.80	40.002144	-104.657199
	4900.00	11.38	232.03	4887.17	-269.83	57.08	-50.83	-124.49	0.00	1244737.48	3236087.36	40.002110	-104.657254
	5000.00	11.38	232.03	4985.21	-171.79	70.00	-62.98	-140.04	0.00	1244725.19	3236071.92	40.002077	-104.657310
	5100.00	11.38	232.03	5083.24	-73.76	82.92	-75.12	-155.60	0.00	1244712.90	3236056.48	40.002044	-104.657365
	5200.00	11.38	232.03	5181.27	24.27	95.83	-87.26	-171.16	0.00	1244700.61	3236041.04	40.002010	-104.657421
	5300.00	11.38	232.03	5279.31	122.31	108.75	-99.40	-186.72	0.00	1244688.33	3236025.60	40.001977	-104.657476
	5400.00	11.38	232.03	5377.34	220.34	121.66	-111.55	-202.27	0.00	1244676.04	3236010.16	40.001944	-104.657532
	5500.00	11.38	232.03	5475.37	318.37	134.58	-123.69	-217.83	0.00	1244663.75	3235994.71	40.001910	-104.657588
	5600.00	11.38	232.03	5573.41	416.41	147.50	-135.83	-233.39	0.00	1244651.46	3235979.27	40.001877	-104.657643
	5700.00	11.38	232.03	5671.44	514.44	160.41	-147.97	-248.95	0.00	1244639.17	3235963.83	40.001844	-104.657699
	5800.00	11.38	232.03	5769.47	612.47	173.33	-160.11	-264.50	0.00	1244626.88	3235948.39	40.001810	-104.657754
	5900.00	11.38	232.03	5867.51	710.51	186.24	-172.26	-280.06	0.00	1244614.59	3235932.95	40.001777	-104.657810
	6000.00	11.38	232.03	5965.54	808.54	199.16	-184.40	-295.62	0.00	1244602.30	3235917.51	40.001744	-104.657865
	6100.00	11.38	232.03	6063.57	906.57	212.08	-196.54	-311.18	0.00	1244590.01	3235902.07	40.001710	-104.657921
	6200.00	11.38	232.03	6161.61	1004.61	224.99	-208.68	-326.74	0.00	1244577.72	3235886.63	40.001677	-104.657976
	6300.00	11.38	232.03	6259.64	1102.64	237.91	-220.83	-342.29	0.00	1244565.43	3235871.19	40.001644	-104.658032
	6400.00	11.38	232.03	6357.67	1200.67	250.82	-232.97	-357.85	0.00	1244553.14	3235855.75	40.001610	-104.658087
6500.00	11.38	232.03	6455.71	1298.71	263.74	-245.11	-373.41	0.00	1244540.86	3235840.30	40.001577	-104.658143	
6600.00	11.38	232.03	6553.74	1396.74	276.66	-257.25	-389.97	0.00	1244528.57	3235824.86	40.001544	-104.658198	

Comments	MD (ft)	Incl (°)	Azim True (°)	TVD (ft)	TVDSS (ft)	VSEC (ft)	NS (ft)	EW (ft)	DLS (°/100ft)	Northing (ftUS)	Easting (ftUS)	Latitude (°)	Longitude (°)
Judy 3-11-2L LP	7736.54	90.00	180.12	7272.00	2115.00	1004.25	-979.93	-504.30	8.00	1243804.85	3235716.41	39.999560	-104.658610
	7800.00	90.00	180.12	7272.00	2115.00	1067.63	-1043.38	-504.43	0.00	1243741.40	3235716.88	39.999386	-104.658610
	7900.00	90.00	180.12	7272.00	2115.00	1167.52	-1143.38	-504.64	0.00	1243641.41	3235717.62	39.999111	-104.658611
	8000.00	90.00	180.12	7272.00	2115.00	1267.40	-1243.38	-504.86	0.00	1243541.41	3235718.36	39.998837	-104.658612
	8100.00	90.00	180.12	7272.00	2115.00	1367.28	-1343.38	-505.07	0.00	1243441.42	3235719.10	39.998562	-104.658613
	8200.00	90.00	180.12	7272.00	2115.00	1467.16	-1443.38	-505.28	0.00	1243341.43	3235719.84	39.998288	-104.658613
	8300.00	90.00	180.12	7272.00	2115.00	1567.04	-1543.38	-505.49	0.00	1243241.43	3235720.58	39.998013	-104.658614
	8400.00	90.00	180.12	7272.00	2115.00	1666.92	-1643.38	-505.71	0.00	1243141.44	3235721.31	39.997739	-104.658615
	8500.00	90.00	180.12	7272.00	2115.00	1766.81	-1743.38	-505.92	0.00	1243041.44	3235722.05	39.997464	-104.658616
	8600.00	90.00	180.12	7272.00	2115.00	1866.69	-1843.38	-506.13	0.00	1242941.45	3235722.79	39.997190	-104.658616
	8700.00	90.00	180.12	7272.00	2115.00	1966.57	-1943.38	-506.34	0.00	1242841.46	3235723.53	39.996915	-104.658617
	8800.00	90.00	180.12	7272.00	2115.00	2066.45	-2043.38	-506.55	0.00	1242741.46	3235724.27	39.996641	-104.658618
	8900.00	90.00	180.12	7272.00	2115.00	2166.33	-2143.38	-506.77	0.00	1242641.47	3235725.01	39.996366	-104.658619
	9000.00	90.00	180.12	7272.00	2115.00	2266.21	-2243.38	-506.98	0.00	1242541.48	3235725.75	39.996092	-104.658619
	9100.00	90.00	180.12	7272.00	2115.00	2366.10	-2343.38	-507.19	0.00	1242441.48	3235726.48	39.995817	-104.658620
	9200.00	90.00	180.12	7272.00	2115.00	2465.98	-2443.38	-507.40	0.00	1242341.49	3235727.22	39.995543	-104.658621
	9300.00	90.00	180.12	7272.00	2115.00	2565.86	-2543.38	-507.61	0.00	1242241.49	3235727.96	39.995268	-104.658622
	9400.00	90.00	180.12	7272.00	2115.00	2665.74	-2643.38	-507.83	0.00	1242141.50	3235728.70	39.994994	-104.658622
	9500.00	90.00	180.12	7272.00	2115.00	2765.62	-2743.38	-508.04	0.00	1242041.51	3235729.44	39.994719	-104.658623
	9600.00	90.00	180.12	7272.00	2115.00	2865.50	-2843.38	-508.25	0.00	1241941.51	3235730.18	39.994445	-104.658624
	9700.00	90.00	180.12	7272.00	2115.00	2965.39	-2943.38	-508.46	0.00	1241841.52	3235730.92	39.994170	-104.658625
	9800.00	90.00	180.12	7272.00	2115.00	3065.27	-3043.38	-508.68	0.00	1241741.53	3235731.66	39.993896	-104.658625
	9900.00	90.00	180.12	7272.00	2115.00	3165.15	-3143.38	-508.89	0.00	1241641.53	3235732.39	39.993621	-104.658626
	10000.00	90.00	180.12	7272.00	2115.00	3265.03	-3243.38	-509.10	0.00	1241541.54	3235733.13	39.993347	-104.658627
	10100.00	90.00	180.12	7272.00	2115.00	3364.91	-3343.38	-509.31	0.00	1241441.55	3235733.87	39.993072	-104.658628
	10200.00	90.00	180.12	7272.00	2115.00	3464.80	-3443.38	-509.52	0.00	1241341.55	3235734.61	39.992798	-104.658628
	10300.00	90.00	180.12	7272.00	2115.00	3564.68	-3543.38	-509.74	0.00	1241241.56	3235735.35	39.992523	-104.658629
	10400.00	90.00	180.12	7272.00	2115.00	3664.56	-3643.38	-509.95	0.00	1241141.56	3235736.09	39.992249	-104.658630
	10500.00	90.00	180.12	7272.00	2115.00	3764.44	-3743.38	-510.16	0.00	1241041.57	3235736.83	39.991974	-104.658631
	10600.00	90.00	180.12	7272.00	2115.00	3864.32	-3843.38	-510.37	0.00	1240941.58	3235737.57	39.991700	-104.658631
	10700.00	90.00	180.12	7272.00	2115.00	3964.20	-3943.38	-510.58	0.00	1240841.58	3235738.30	39.991425	-104.658632
	10800.00	90.00	180.12	7272.00	2115.00	4064.09	-4043.38	-510.80	0.00	1240741.59	3235739.04	39.991151	-104.658633
	10900.00	90.00	180.12	7272.00	2115.00	4163.97	-4143.38	-511.01	0.00	1240641.60	3235739.78	39.990876	-104.658634
	11000.00	90.00	180.12	7272.00	2115.00	4263.85	-4243.38	-511.22	0.00	1240541.60	3235740.52	39.990602	-104.658634
	11100.00	90.00	180.12	7272.00	2115.00	4363.73	-4343.38	-511.43	0.00	1240441.61	3235741.26	39.990327	-104.658635
	11200.00	90.00	180.12	7272.00	2115.00	4463.61	-4443.38	-511.65	0.00	1240341.61	3235742.00	39.990053	-104.658636
	11300.00	90.00	180.12	7272.00	2115.00	4563.49	-4543.38	-511.86	0.00	1240241.62	3235742.74	39.989778	-104.658637
	11400.00	90.00	180.12	7272.00	2115.00	4663.38	-4643.38	-512.07	0.00	1240141.63	3235743.47	39.989504	-104.658637
	11500.00	90.00	180.12	7272.00	2115.00	4763.26	-4743.38	-512.28	0.00	1240041.63	3235744.21	39.989229	-104.658638
	11600.00	90.00	180.12	7272.00	2115.00	4863.14	-4843.38	-512.49	0.00	1239941.64	3235744.95	39.988954	-104.658639
	11700.00	90.00	180.12	7272.00	2115.00	4963.02	-4943.38	-512.71	0.00	1239841.65	3235745.69	39.988680	-104.658640
	11800.00	90.00	180.12	7272.00	2115.00	5062.90	-5043.37	-512.92	0.00	1239741.65	3235746.43	39.988405	-104.658640
	11900.00	90.00	180.12	7272.00	2115.00	5162.79	-5143.37	-513.13	0.00	1239641.66	3235747.17	39.988131	-104.658641
	12000.00	90.00	180.12	7272.00	2115.00	5262.67	-5243.37	-513.34	0.00	1239541.67	3235747.91	39.987856	-104.658642
	12100.00	90.00	180.12	7272.00	2115.00	5362.55	-5343.37	-513.56	0.00	1239441.67	3235748.65	39.987582	-104.658643
	12200.00	90.00	180.12	7272.00	2115.00	5462.43	-5443.37	-513.77	0.00	1239341.68	3235749.38	39.987307	-104.658643
	12300.00	90.00	180.12	7272.00	2115.00	5562.31	-5543.37	-513.98	0.00	1239241.68	3235750.12	39.987033	-104.658644
	12400.00	90.00	180.12	7272.00	2115.00	5662.19	-5643.37	-514.19	0.00	1239141.69	3235750.86	39.986758	-104.658645
	12500.00	90.00	180.12	7272.00	2115.00	5762.08	-5743.37	-514.40	0.00	1239041.70	3235751.60	39.986484	-104.658646
	12600.00	90.00	180.12	7272.00	2115.00	5861.96	-5843.37	-514.62	0.00	1238941.70	3235752.34	39.986209	-104.658646
	12700.00	90.00	180.12	7272.00	2115.00	5961.84	-5943.37	-514.83	0.00	1238841.71	3235753.08	39.985935	-104.658647
	12800.00	90.00	180.12	7272.00	2115.00	6061.72	-6043.37	-515.04	0.00	1238741.72	3235753.82	39.985660	-104.658648
	12900.00	90.00	180.12	7272.00	2115.00	6161.60	-6143.37	-515.25	0.00	1238641.72	3235754.56	39.985386	-104.658649
	13000.00	90.00	180.12	7272.00	2115.00	6261.48	-6243.37	-515.46	0.00	1238541.73	3235755.29	39.985111	-104.658649
	13100.00	90.00	180.12	7272.00	2115.00	6361.37	-6343.37	-515.68	0.00	1238441.73	3235756.03	39.984837	-104.658650
	13200.00	90.00	180.12	7272.00	2115.00	6461.25	-6443.37	-515.89	0.00	1238341.74	3235756.77	39.984562	-104.658651
	13300.00	90.00	180.12	7272.00	2115.00	6561.13	-6543.37	-516.10	0.00	1238241.75	3235757.51	39.984288	-104.658652
	13400.00	90.00	180.12	7272.00	2115.00	6661.01	-6643.37	-516.31	0.00	1238141.75	3235758.25	39.984013	-104.658652
	13500.00	90.00	180.12	7272.00	2115.00	6760.89	-6743.37	-516.53	0.00	1238041.76	3235758.99	39.983739	-104.658653
	13600.00	90.00	180.12	7272.00	2115.00	6860.77	-6843.37	-516.74	0.00	1237941.77	3235759.73	39.983464	-104.658654
	13700.00	90.00	180.12	7272.00	2115.00	6960.66	-6943.37	-516.95	0.00	1237841.77	3235760.46	39.983190	-104.658655
	13800.00	90.00	180.12	7272.00	2115.00	7060.54	-7043.37	-517.16	0.00	1237741.78	3235761.20	39.982915	-104.658655
	13900.00	90.00	180.12	7272.00	2115.00	7160.42	-7143.37	-517.37	0.00	1237641.78	3235761.94	39.982641	-104.658656
	14000.00	90.00	180.12	7272.00	2115.00	7260.30	-7243.37	-517.59	0.00	1237541.79	3235762.68	39.982366	-104.658657
	14100.00	90.00	180.12	7272.00	2115.00	7360.18	-7343.37	-517.80	0.00	1237441.80	3235763.42	39.982092	-104.658658
	14200.00	90.00	180.12	7272.00	2115.00	7460.07	-7443.37	-518.01	0.00	1237341.80	3235764.16	39.981817	-104.658658
	14300.00	90.00	180.12	7272.00	2115.00	7559.95	-7543.37	-518.22	0.00	1237241.81	3235764.90	39.981543	-104.658659
	14400.00	90.00	180.12	7272.00	2115.00	7659.83	-7643.37	-518.43	0.00	1237141.82	3235765.64	39.981268	-104.658660
	14500.00	90.00	180.12	7272.00	2115.00	7759.71	-7743.37	-518.65	0.00	1237041.82	3235766.37	39.980994	-104.658661
	14600.00	90.00	180.12	7272.00	2115.00	7859.59	-7843.37	-518.86	0.00	1236941.83	3235767.11	39.980719	-104.658661
	14700.00	90.00	180.12	7272.00	2115.00	7959.47	-7943.37	-519.07	0.00	1236841.84	3235767.85	39.980445	-104.658662
	14800.00	90.00	180.12	7272.00	2115.00	8059.36	-8043.37	-519.28	0.00	1236741.84	3235768.59	39.980	

Judy 3-11-2L R0 mdv 11Jul22 Anti-Collision Summary Report

Analysis Date-24hr Time: July 13, 2022 - 16:19
Client: Confluence DJ
Field: CO, Weld County (NAD 83 NZ) - 2019
Structure: Confluence 34-01N-65W (Judy 34 Pad)
Slot: Judy 3-11-2L
Well: Judy 3-11-2L
Borehole: Original Hole
Scan MD Range: 0.00ft ~ 17073.23ft

Analysis Method: 3D Least Distance
Reference Trajectory: Judy 3-11-2L R0 mdv 11Jul22 (Def Plan)
Depth Interval: Every 10.00 Measured Depth (ft)
Rule Set: NAL Procedure: D&M AntiCollision Standard S002
Min Pts: All local minima indicated.
Version / Patch: 2.10.829.1
Database \ Project: us1455vsm3175\drilling-CO, Weld County 2.10_RESTORE

Trajectory Error Model: ISCWSA3 3-D 95.000% Confidence 2.7955 sigma, for subject well. For offset wells, error model version is specified with each well respectively.

Offset Selection Criteria

Wellhead distance scan: Not performed!
 Selection filters: Definitive Surveys - Definitive Plans - Definitive surveys exclude definitive plans
 - All Non-Def Surveys when no Def-Survey is set in a borehole - All Non-Def Plans when no Def-Plan is set in a borehole

Offset Trajectories Summary

Offset Trajectory	Separation			Allow Dev. (ft)	Sep. Fact.	Controlling Rule	Reference Trajectory		Risk Level			Alert	Status
	Ct-Ct (ft)	MAS (ft)	EOU (ft)				MD (ft)	TVD (ft)	Alert	Minor	Major		

Results highlighted: Sep-Factor separation <= 1.50 ft

Judy 3-3-4L R0 mdv 11Jul22 (Def Plan) Fail Major

149.36	32.81	148.37	116.55	N/A	MAS = 10.00 (m)	0.00	0.00					Surface
149.36	32.81	148.37	116.55	N/A	MAS = 10.00 (m)	23.00	23.00					WRP
82.36	32.81	65.03	49.55	4.98	MAS = 10.00 (m)	1700.00	1699.37	OSF<5.00				Enter Alert
82.36	42.00	54.03	40.36	2.98	OSF1.50	3900.63	3900.00					MinPt-CtCt
82.57	42.58	53.85	39.98	2.94	OSF1.50	3950.00	3949.37					MINPT-O-EOU
82.77	42.82	53.89	39.95	2.93	OSF1.50	3970.00	3969.36					MinPt-O-ADP
83.79	43.52	54.45	40.27	2.92	OSF1.50	4030.00	4029.33					MinPt-O-SF
131.03	55.37	93.79	75.66	3.59	OSF1.50	5040.00	5024.42					MinPt-CtCt
131.95	58.10	92.85	73.85	3.44	OSF1.50	5250.00	5230.29					MINPT-O-EOU
133.17	59.57	93.13	73.60	3.38	OSF1.50	5360.00	5338.13					MinPt-O-ADP
145.58	67.07	100.54	78.51	3.28	OSF1.50	5890.00	5857.70					MinPt-O-SF
277.29	83.89	221.03	193.40	5.00	OSF1.50	7410.00	7199.74	OSF>5.00				Exit Alert
302.66	91.77	241.15	210.88	4.98	OSF1.50	7870.00	7272.00	OSF<5.00				Enter Alert
332.72	332.86	110.49	-0.13	1.50	OSF1.50	12870.00	7272.00		OSF<1.50			Enter Minor
355.61	532.92	0.00	-177.31	1.00	OSF1.50	16410.00	7272.00				OSF<1.00	Enter Major
360.02	571.60	-21.38	-211.59	0.94	OSF1.50	17073.23	7272.00					MinPts

Jordan 34-9 Blind 0' to 7970' - PA (Def Survey)

Jordan 34-9 Blind 0' to 7970' - PA (Def Survey) Fail Major

195.73	32.81	193.92	162.92	N/A	MAS = 10.00 (m)	0.00	0.00					Surface
194.96	32.81	193.05	162.16	1907.78	MAS = 10.00 (m)	10.00	10.00					MinPt-O-SF
194.71	32.81	192.84	161.90	3235.11	MAS = 10.00 (m)	23.00	23.00					WRP
188.16	58.21	148.75	129.95	4.96	OSF1.50	1000.00	999.62	OSF<5.00				Enter Alert
185.13	185.62	60.85	-0.49	1.50	OSF1.50	3130.00	3129.37		OSF<1.50			Enter Minor
167.44	252.27	-1.28	-84.83	0.99	OSF1.50	4240.00	4238.58			OSF<1.00		Enter Major
83.28	299.82	-117.14	-216.54	0.41	OSF1.50	5020.00	5004.81					MinPt-CtCt
83.62	302.39	-118.51	-218.78	0.41	OSF1.50	5060.00	5044.03					MinPt-O-SF
85.07	305.57	-119.18	-220.50	0.41	OSF1.50	5110.00	5093.04					MINPT-O-EOU
87.62	308.71	-118.73	-221.09	0.42	OSF1.50	5160.00	5142.06					MinPt-O-ADP
246.94	369.89	-0.19	-122.95	1.00	OSF1.50	6200.00	6161.61				OSF>1.00	Exit Major
409.19	411.98	134.00	-2.79	1.49	OSF1.50	6920.00	6859.95					Exit Minor
1447.09	437.69	1154.76	1009.40	4.97	OSF1.50	8170.00	7272.00	OSF>5.00				Exit Alert
10321.85	440.51	10027.64	9881.34	35.27	OSF1.50	17073.23	7272.00					TD

Judy 3-10-1L R0 mdv 11Jul22 (Def Plan)

Judy 3-10-1L R0 mdv 11Jul22 (Def Plan) Fail Minor

151.47	32.81	150.49	118.66	N/A	MAS = 10.00 (m)	0.00	0.00					Surface
151.47	32.81	150.49	118.66	N/A	MAS = 10.00 (m)	23.00	23.00					WRP
80.86	32.81	63.86	48.05	4.99	MAS = 10.00 (m)	1670.00	1669.37	OSF<5.00				Enter Alert
80.79	41.97	52.48	38.82	2.92	OSF1.50	3900.63	3900.00					MinPt-CtCt
80.93	42.31	52.39	38.61	2.90	OSF1.50	3930.00	3929.37					MINPT-O-EOU
81.04	42.43	52.42	38.61	2.90	OSF1.50	3940.00	3939.37					MinPt-O-ADP
81.56	42.78	52.71	38.77	2.89	OSF1.50	3970.00	3969.36					MinPt-O-SF
177.70	54.03	141.36	123.68	5.00	OSF1.50	4910.00	4896.98	OSF>5.00				Exit Alert
532.61	160.48	425.30	372.14	5.00	OSF1.50	8860.00	7272.00	OSF<5.00				Enter Alert
532.75	533.08	177.03	-0.33	1.50	OSF1.50	14960.00	7272.00		OSF<1.50			Enter Minor
532.80	666.80	87.93	-134.00	1.20	OSF1.50	17073.23	7272.00					MinPts

Desha 4-1-3L - Plan (Def Plan)

Desha 4-1-3L - Plan (Def Plan) Fail Minor

226.93	32.81	225.94	194.12	N/A	MAS = 10.00 (m)	0.00	0.00					Surface
226.93	32.81	225.92	194.12	12754.01	MAS = 10.00 (m)	23.00	23.00					WRP
226.93	32.81	224.03	194.12	118.42	MAS = 10.00 (m)	250.00	250.00					MinPts
227.70	32.81	223.21	194.89	64.60	MAS = 10.00 (m)	410.00	409.98					MINPT-O-EOU
149.06	32.81	129.65	116.25	8.06	MAS = 10.00 (m)	2170.00	2169.37					MinPts
149.09	32.81	129.64	116.25	8.02	MAS = 10.00 (m)	2190.00	2189.37					MINPT-O-EOU
151.14	32.81	131.23	118.34	7.93	MAS = 10.00 (m)	2290.00	2289.37					MinPt-O-SF
472.44	58.55	433.08	413.89	12.28	OSF1.50	5060.00	5044.03					MinPt-O-ADP
414.08	99.24	347.59	314.84	6.31	OSF1.50	7380.00	7186.14					MinPt-CtCt
414.89	101.58	346.84	313.31	6.17	OSF1.50	7420.00	7204.03					MINPT-O-EOU
415.88	102.77	347.04	313.11	6.11	OSF1.50	7440.00	7212.23					MinPt-O-ADP
432.05	110.27	358.21	321.78	5.92	OSF1.50	7580.00	7255.17					MinPt-O-SF
470.64	142.02	375.63	328.62	5.00	OSF1.50	8510.00	7272.00	OSF<5.00				Enter Alert
470.71	471.36	156.14	-0.65	1.50	OSF1.50	13750.00	7272.00		OSF<1.50			Enter Minor
470.76	692.34	8.87	-221.59	1.02	OSF1.50	17073.23	7272.00					MinPts

RMPCO-UPRR Penrod 1 Blind 0' to 8112' - PA (Def Survey)

RMPCO-UPRR Penrod 1 Blind 0' to 8112' - PA (Def Survey) Fail Minor

5006.34	32.81	5004.40	4973.54	38036.12	MAS = 10.00 (m)	0.00	0.00					Surface
5006.34	32.81	5003.80	4973.54	6792.16	MAS = 10.00 (m)	23.00	23.00					WRP
5006.34	32.81	4995.06	4973.54	528.48	MAS = 10.00 (m)	250.00	250.00					MinPts
1469.57	444.06	1172.99	1025.51	4.98	OSF1.50	10350.00	7272.00	OSF<5.00				Enter Alert
476.08	479.98	155.57	-3.89	1.49	OSF1.50	11520.00	7272.00		OSF<1.50			Enter Minor
410.56	492.80	81.49	-82.24	1.25	OSF1.50	11760.00	7272.00					MinPts
475.03	479.75	154.66	-4.72	1.49	OSF1.50	12000.00	7272.00		OSF>1.50			Exit Minor
1477.15	444.41	1180.34	1032.74	5.00	OSF1.50	13180.00	7272.00	OSF>5.00				Exit Alert

...Confluence 34-01N-65W (Judy 34 Pad)\Judy 3-11-2L\Original Hole\Judy 3-11-2L R0 mdv 11Jul22

Offset Trajectory	Separation			Allow Dev. (ft)	Sep. Fact.	Controlling Rule	Reference Trajectory		Risk Level			Alert	Status
	Ct-Ct (ft)	MAS (ft)	EOU (ft)				MD (ft)	TVD (ft)	Alert	Minor	Major		
	5328.01	442.22	5032.66	4885.79	18.13	OSF1.50	17073.23	7272.00				TD	
Judy 3-4 MWD 0' to 7730' - PR (Def Survey)													Warning Alert
	25.81	20.53	23.99	5.27	N/A	MAS = 6.26 (m)	0.00	0.00	CtCt<=15m<15.00			Enter Alert	
	25.21	20.53	23.38	4.68	1318.26	MAS = 6.26 (m)	23.00	23.00				WRP	
	21.04	20.53	13.18	0.50	3.18	MAS = 6.26 (m)	670.00	669.83				MinPts	
	21.72	20.53	12.37	1.19	2.64	MAS = 6.26 (m)	820.00	819.73				MINPT-O-EOU	
	26.65	20.53	14.66	6.12	2.44	MAS = 6.26 (m)	1090.00	1089.57				MinPt-O-SF	
	91.20	28.57	71.62	62.63	4.98	OSF1.50	2040.00	2039.37	OSF<5.00			Exit Alert	
	594.18	56.49	555.98	537.68	16.19	OSF1.50	4330.00	4327.76				MinPt-O-SF	
	801.42	85.47	743.90	715.95	14.31	OSF1.50	6130.00	6092.98				MinPt-O-SF	
	394.15	121.25	312.78	272.90	4.92	OSF1.50	7650.00	7266.84	OSF<5.00			Enter Alert	
	336.69	125.08	252.77	211.62	4.07	OSF1.50	7850.00	7272.00				MinPts	
	336.65	124.94	252.82	211.71	4.07	OSF1.50	7860.00	7272.00				MinPt-CtCt	
	388.32	117.65	309.35	270.67	5.00	OSF1.50	8050.00	7272.00	OSF>5.00			Exit Alert	
	9221.95	112.70	9146.28	9109.24	124.49	OSF1.50	17073.23	7272.00				TD	
Desha 4-7-3L - Plan (Def Plan)													Warning Alert
	25.21	20.36	24.23	4.85	N/A	MAS = 6.21 (m)	0.00	0.00	CtCt<=15m<15.00			Enter Alert	
	25.21	20.36	24.21	4.85	1139.77	MAS = 6.21 (m)	23.00	23.00				WRP	
	25.21	20.36	22.32	4.85	12.67	MAS = 6.21 (m)	250.00	250.00				MinPts	
	25.85	20.36	21.55	5.49	7.50	MAS = 6.21 (m)	390.00	389.99				MINPT-O-EOU	
	24.05	20.36	15.46	3.68	3.03	MAS = 6.21 (m)	820.00	819.73				MinPts	
	24.12	20.36	15.33	3.76	2.96	MAS = 6.21 (m)	840.00	839.72				MINPT-O-EOU	
	24.65	20.36	15.55	4.29	2.92	MAS = 6.21 (m)	870.00	869.70				MinPt-O-SF	
	52.73	20.36	41.17	32.37	4.89	MAS = 6.21 (m)	1120.00	1119.55	OSF>5.00			Exit Alert	
	2566.68	716.85	2088.45	1849.83	5.38	OSF1.50	17073.23	7272.00				MinPts	
Desha 4-6-1L - Plan (Def Plan)													Warning Alert
	50.43	32.81	49.44	17.62	N/A	MAS = 10.00 (m)	0.00	0.00				Surface	
	50.43	32.81	49.42	17.62	2325.84	MAS = 10.00 (m)	23.00	23.00				WRP	
	50.43	32.81	47.53	17.62	25.85	MAS = 10.00 (m)	250.00	250.00				MinPts	
	51.13	32.81	46.73	18.32	14.69	MAS = 10.00 (m)	400.00	399.98	CtCt<=15m<15.00			MINPT-O-EOU	
	48.81	32.81	41.33	16.00	7.36	MAS = 10.00 (m)	710.00	709.80				Enter Alert	
	34.73	32.81	24.25	1.92	3.55	MAS = 10.00 (m)	1000.00	999.62				MinPts	
	34.76	32.81	24.16	1.95	3.51	MAS = 10.00 (m)	1010.00	1009.62				MINPT-O-EOU	
	35.37	32.81	24.44	2.56	3.46	MAS = 10.00 (m)	1040.00	1039.60				MinPt-O-SF	
	58.78	32.81	46.02	25.98	4.91	MAS = 10.00 (m)	1230.00	1229.48	OSF>5.00			Exit Alert	
	2277.97	684.74	1821.15	1593.24	5.00	OSF1.50	16580.00	7272.00	OSF<5.00			Enter Alert	
	2277.87	718.63	1798.45	1559.24	4.76	OSF1.50	17073.23	7272.00				MinPts	
Desha 4-2-4L - Plan (Def Plan)													Warning Alert
	75.64	32.81	74.66	42.83	N/A	MAS = 10.00 (m)	0.00	0.00				Surface	
	75.64	32.81	74.64	42.83	3511.91	MAS = 10.00 (m)	23.00	23.00				WRP	
	75.64	32.81	72.74	42.83	39.03	MAS = 10.00 (m)	250.00	250.00				MinPts	
	76.43	32.81	71.94	43.63	21.47	MAS = 10.00 (m)	410.00	409.98	CtCt<=15m<15.00			MINPT-O-EOU	
	49.06	32.81	38.51	16.25	5.02	MAS = 10.00 (m)	1010.00	1009.62				Enter Alert	
	48.26	32.81	37.59	15.45	4.88	MAS = 10.00 (m)	1020.00	1019.61	OSF<5.00			Enter Alert	
	43.22	32.81	31.27	10.41	3.85	MAS = 10.00 (m)	1130.00	1129.55				MinPts	
	43.28	32.81	31.21	10.47	3.82	MAS = 10.00 (m)	1140.00	1139.54				MINPT-O-EOU	
	44.12	32.81	31.71	11.31	3.78	MAS = 10.00 (m)	1170.00	1169.52				MinPt-O-SF	
	63.63	32.81	49.81	30.82	4.88	MAS = 10.00 (m)	1320.00	1319.43	OSF>5.00			Exit Alert	
	2101.96	631.31	1680.76	1470.65	5.00	OSF1.50	15900.00	7272.00	OSF<5.00			Enter Alert	
	2101.71	711.46	1627.07	1390.25	4.44	OSF1.50	17073.23	7272.00				MinPts	
Desha 4-5-2L - Plan (Def Plan)													Warning Alert
	100.86	32.81	99.87	68.05	N/A	MAS = 10.00 (m)	0.00	0.00				Surface	
	100.86	32.81	99.85	68.05	4697.98	MAS = 10.00 (m)	23.00	23.00				WRP	
	100.86	32.81	97.96	68.05	52.21	MAS = 10.00 (m)	250.00	250.00				MinPts	
	101.64	32.81	97.14	68.83	28.64	MAS = 10.00 (m)	410.00	409.98	CtCt<=15m<15.00			MINPT-O-EOU	
	57.68	32.81	45.16	24.87	4.92	MAS = 10.00 (m)	1180.00	1179.51	OSF<5.00			Enter Alert	
	57.02	32.81	44.01	24.22	4.66	MAS = 10.00 (m)	1220.00	1219.49				MinPts	
	57.12	32.81	43.96	24.31	4.62	MAS = 10.00 (m)	1230.00	1229.48				MINPT-O-EOU	
	58.08	32.81	44.59	25.27	4.57	MAS = 10.00 (m)	1260.00	1259.47				MinPt-O-SF	
	67.34	32.81	52.93	34.53	4.94	MAS = 10.00 (m)	1350.00	1349.41	OSF>5.00			Exit Alert	
	1832.95	133.28	1743.78	1699.68	20.77	OSF1.50	8070.00	7272.00	OSF<5.00			MinPt-O-SF	
	1836.54	552.32	1467.99	1284.21	4.99	OSF1.50	14670.00	7272.00	OSF<5.00			Enter Alert	
	1836.71	717.22	1358.23	1119.48	3.84	OSF1.50	17073.23	7272.00				MinPts	
Desha 4-4-3L - Plan (Def Plan)													Warning Alert
	126.07	32.81	125.09	93.26	N/A	MAS = 10.00 (m)	0.00	0.00				Surface	
	126.07	32.81	125.06	93.26	5884.06	MAS = 10.00 (m)	23.00	23.00				WRP	
	126.07	32.81	123.17	93.26	65.39	MAS = 10.00 (m)	250.00	250.00				MinPts	
	126.85	32.81	122.35	94.04	35.81	MAS = 10.00 (m)	410.00	409.98	CtCt<=15m<15.00			MINPT-O-EOU	
	66.33	32.81	52.32	33.53	5.02	MAS = 10.00 (m)	1300.00	1299.44				MinPts	
	66.34	32.81	52.19	33.53	4.97	MAS = 10.00 (m)	1310.00	1309.44	OSF<5.00			Enter Alert	
	66.46	32.81	52.19	33.65	4.93	MAS = 10.00 (m)	1320.00	1319.43				MINPT-O-EOU	
	67.57	32.81	52.94	34.76	4.88	MAS = 10.00 (m)	1350.00	1349.41				MinPt-O-SF	
	71.76	32.81	56.59	38.95	4.89	MAS = 10.00 (m)	1400.00	1399.39	OSF>5.00			Exit Alert	
	1510.30	127.94	1424.68	1382.37	17.83	OSF1.50	7950.00	7272.00	OSF<5.00			MinPt-O-SF	
	1512.25	454.65	1208.83	1057.61	5.00	OSF1.50	13260.00	7272.00	OSF<5.00			Enter Alert	
	1512.47	715.26	1035.31	797.22	3.17	OSF1.50	17073.23	7272.00				MinPts	
Desha 4-3-1L - Plan (Def Plan)													Warning Alert
	151.28	32.81	150.30	118.47	N/A	MAS = 10.00 (m)	0.00	0.00				Surface	
	151.28	32.81	150.28	118.47	7070.13	MAS = 10.00 (m)	23.00	23.00				WRP	
	151.28	32.81	148.35	118.47	78.57	MAS = 10.00 (m)	250.00	250.00				MinPts	
	152.06	32.81	147.56	119.25	42.99	MAS = 10.00 (m)	410.00	409.98	CtCt<=15m<15.00			MINPT-O-EOU	
	86.09	32.81	71.29	53.28	6.16	MAS = 10.00 (m)	1360.00	1359.41				MinPts	
	86.13	32.81	71.20	53.32	6.11	MAS = 10.00 (m)	1370.00	1369.40	CtCt<=15m<15.00			MINPT-O-EOU	
	88.90	32.81	73.12	56.09	5.95	MAS = 10.00 (m)	1440.00	1439.38				MinPt-O-SF	
	1180.44	94.64	1117.02	1085.80	18.89	OSF1.50	7190.00	7075.83				MINPT-O-EOU	
	1182.20	96.87	1117.25	1085.33	18.48	OSF1.50	7260.00	7121.10				MinPt-O-ADP	
	1226.01	368.55	979.98	857.46	5.00	OSF1.50	11950.00	7272.00	OSF<5.00			Enter Alert	
	1226.24	717.55	747.54	508.69	2.95	OSF1.50	17073.23	7272.00				MinPts	
Desha 4-1-4L - Plan (Def Plan)													Warning Alert

...Confluence 34-01N-65W (Judy 34 Pad)\Judy 3-11-2L\Original Hole\Judy 3-11-2L R0 mdv 11Jul22

Offset Trajectory	Separation			Allow Dev. (ft)	Sep. Fact.	Controlling Rule	Reference Trajectory		Risk Level			Alert	Status
	Cl-Cl (ft)	MAS (ft)	EOU (ft)				MD (ft)	TVD (ft)	Alert	Minor	Major		
Judy 3-9-3L R0 mdv 11Jul22 (Def Plan)	176.50	32.81	175.51	143.69	N/A	MAS = 10.00 (m)	0.00	0.00				Surface	
	176.50	32.81	175.49	143.69		MAS = 10.00 (m)	23.00	23.00				WRP	
	176.50	32.81	173.60	143.69	91.75	MAS = 10.00 (m)	250.00	250.00				MinPts	
	177.27	32.81	172.77	144.47	50.16	MAS = 10.00 (m)	410.00	409.98				MINPT-O-EOU	
	111.75	32.81	96.23	78.94	7.62	MAS = 10.00 (m)	1420.00	1419.38				MinPts	
	111.97	32.81	96.09	79.16	7.45	MAS = 10.00 (m)	1450.00	1449.38				MINPT-O-EOU	
	117.60	32.81	100.23	84.79	7.12	MAS = 10.00 (m)	1580.00	1579.37				MinPt-O-SF	
	907.39	94.53	844.04	812.86	14.53	OSF1.50	7230.00	7102.33				MinPt-CiCt	
	908.20	96.70	843.40	811.50	14.22	OSF1.50	7290.00	7138.90				MINPT-O-EOU	
	908.85	97.47	843.54	811.37	14.11	OSF1.50	7310.00	7150.21				MinPt-O-ADP	
	993.49	117.48	914.84	876.01	12.78	OSF1.50	7740.00	7272.00				MinPt-O-SF	
	1060.85	319.42	847.58	741.44	4.99	OSF1.50	11380.00	7272.00	OSF<5.00			Enter Alert	
	1059.40	698.81	593.21	360.80	2.28	OSF1.50	17073.23	7272.00				MinPts	
													Warning Alert
Desha 4-2-2L - Plan (Def Plan)	157.64	32.81	156.66	124.83	N/A	MAS = 10.00 (m)	0.00	0.00				Surface	
	157.64	32.81	156.66	124.83	N/A	MAS = 10.00 (m)	23.00	23.00				WRP	
	117.27	35.92	93.00	81.35	4.99	OSF1.50	3360.00	3359.37	OSF<5.00			Enter Alert	
	117.27	41.97	88.96	75.30	4.26	OSF1.50	3900.63	3900.00				MinPt-CiCt	
	117.34	42.19	88.88	75.14	4.24	OSF1.50	3920.00	3919.37				MINPT-O-EOU	
	117.42	42.31	88.88	75.11	4.23	OSF1.50	3930.00	3929.37				MinPt-O-ADP	
	118.98	43.13	89.90	75.85	4.20	OSF1.50	4000.00	3999.35				MinPt-O-SF	
	156.47	47.67	124.36	108.80	5.00	OSF1.50	4390.00	4386.99	OSF>5.00			Exit Alert	
	886.68	267.22	708.20	619.46	4.99	OSF1.50	10620.00	7272.00	OSF<5.00			Enter Alert	
	886.92	674.83	436.70	212.08	1.97	OSF1.50	17073.23	7272.00				MinPts	
													Warning Alert
Judy 3-8-2L R0 mdv 11Jul22 (Def Plan)	201.71	32.81	200.73	168.90	N/A	MAS = 10.00 (m)	0.00	0.00				Surface	
	201.71	32.81	200.71	168.90	11330.72	MAS = 10.00 (m)	23.00	23.00				WRP	
	201.71	32.81	198.82	168.90	105.21	MAS = 10.00 (m)	250.00	250.00				MinPts	
	202.49	32.81	197.95	169.68	57.42	MAS = 10.00 (m)	410.00	409.98				MINPT-O-EOU	
	120.33	32.81	102.85	87.53	7.25	MAS = 10.00 (m)	1580.00	1579.37				MinPts	
	120.46	32.81	102.78	87.66	7.16	MAS = 10.00 (m)	1600.00	1599.37				MINPT-O-EOU	
	124.00	32.81	105.24	91.19	6.92	MAS = 10.00 (m)	1700.00	1699.37				MinPt-O-SF	
	737.43	97.75	671.94	639.69	11.42	OSF1.50	7330.00	7161.06				MinPt-CiCt	
	738.18	99.98	671.20	638.20	11.17	OSF1.50	7380.00	7186.14				MINPT-O-EOU	
	739.77	101.92	671.50	637.85	10.98	OSF1.50	7420.00	7204.03				MinPt-O-ADP	
	778.42	116.40	700.49	662.01	10.10	OSF1.50	7780.00	7272.00				MinPt-O-SF	
	781.59	235.39	624.34	546.20	5.00	OSF1.50	9960.00	7272.00	OSF<5.00			Enter Alert	
	781.78	715.50	304.45	66.27	1.64	OSF1.50	17073.23	7272.00				MinPts	
													Warning Alert
Judy 3-7-1L R0 mdv 11Jul22 (Def Plan)	167.42	32.81	166.44	134.61	N/A	MAS = 10.00 (m)	0.00	0.00				Surface	
	167.42	32.81	166.44	134.61	N/A	MAS = 10.00 (m)	23.00	23.00				WRP	
	148.31	32.81	133.78	115.50	10.87	MAS = 10.00 (m)	1420.00	1419.38				MinPts	
	150.53	33.03	128.18	117.50	7.00	OSF1.50	3060.00	3059.37				MINPT-O-EOU	
	150.76	33.30	128.22	117.46	6.95	OSF1.50	3090.00	3089.37				MinPt-O-ADP	
	156.75	35.57	132.71	121.19	6.76	OSF1.50	3330.00	3329.37				MinPt-O-SF	
	1219.37	366.77	974.53	852.60	5.00	OSF1.50	12200.00	7272.00	OSF<5.00			Enter Alert	
	1219.63	678.10	767.23	541.53	2.70	OSF1.50	17073.23	7272.00				MinPts	
													Warning Alert
Judy 3-2-4L R0 mdv 11Jul22 (Def Plan)	180.22	32.81	179.24	147.41	N/A	MAS = 10.00 (m)	0.00	0.00				Surface	
	180.22	32.81	179.24	147.41	N/A	MAS = 10.00 (m)	23.00	23.00				WRP	
	170.98	32.81	158.77	138.17	15.14	MAS = 10.00 (m)	1190.00	1189.51				MinPts	
	171.95	32.81	157.23	139.14	12.45	MAS = 10.00 (m)	1440.00	1439.38				MINPT-O-EOU	
	175.51	32.81	158.15	142.70	10.68	MAS = 10.00 (m)	1700.00	1699.37				MINPT-O-EOU	
	175.97	32.81	157.43	143.16	10.00	MAS = 10.00 (m)	2220.00	2219.37				MINPT-O-EOU	
	178.64	32.81	159.68	145.83	9.89	MAS = 10.00 (m)	2380.00	2379.37				MinPt-O-SF	
	1496.95	450.23	1196.47	1046.72	4.99	OSF1.50	13580.00	7272.00	OSF<5.00			Enter Alert	
	1497.17	672.05	1048.81	825.12	3.34	OSF1.50	17073.23	7272.00				MinPts	
													Warning Alert
Judy 3-7-1L R0 mdv 11Jul22 (Def Plan)	195.45	32.81	194.47	162.64	N/A	MAS = 10.00 (m)	0.00	0.00				Surface	
	195.45	32.81	194.47	162.64	N/A	MAS = 10.00 (m)	23.00	23.00				WRP	
	192.55	32.81	186.41	159.74	37.17	MAS = 10.00 (m)	580.00	579.88				MinPts	
	192.87	32.81	186.05	160.06	32.87	MAS = 10.00 (m)	650.00	649.84				MINPT-O-EOU	
	303.84	32.81	286.44	271.03	18.45	MAS = 10.00 (m)	1700.00	1699.37				MinPt-O-SF	
	686.77	43.69	657.31	643.07	24.09	OSF1.50	3990.00	3989.36				MinPt-O-SF	
	1704.10	512.43	1362.15	1191.67	5.00	OSF1.50	14510.00	7272.00	OSF<5.00			Enter Alert	
	1703.52	676.60	1252.13	1026.93	3.78	OSF1.50	17073.23	7272.00				MinPts	
													Warning Alert
Judy 3-6-3L R0 mdv 11Jul22 (Def Plan)	212.59	32.81	211.61	179.78	N/A	MAS = 10.00 (m)	0.00	0.00				Surface	
	212.59	32.81	211.61	179.78	N/A	MAS = 10.00 (m)	23.00	23.00				WRP	
	211.27	32.81	206.11	178.46	50.45	MAS = 10.00 (m)	480.00	479.94				MinPts	
	211.47	32.81	205.83	178.66	45.24	MAS = 10.00 (m)	530.00	529.91				MINPT-O-EOU	
	373.93	32.81	356.65	341.12	22.88	MAS = 10.00 (m)	1700.00	1699.37				MinPt-O-SF	
	873.25	43.89	843.66	829.35	30.49	OSF1.50	4000.00	3999.35				MinPt-O-SF	
	2121.11	637.34	1695.89	1483.77	5.00	OSF1.50	16450.00	7272.00	OSF<5.00			Enter Alert	
	2120.98	677.37	1669.07	1443.61	4.70	OSF1.50	17073.23	7272.00				MinPts	
													Warning Alert
Kalsen 14-10 Blind 0' to 8244' - PA (Def Survey)	9969.19	32.81	9966.17	9936.38	8234.36	MAS = 10.00 (m)	0.00	0.00				Surface	
	9969.19	32.81	9965.56	9936.38	5489.58	MAS = 10.00 (m)	23.00	23.00				WRP	
	9969.19	32.81	9956.24	9936.38	894.99	MAS = 10.00 (m)	250.00	250.00				MinPts	
	1602.08	484.74	1278.38	1117.33	4.97	OSF1.50	15300.00	7272.00	OSF<5.00			Enter Alert	
	738.05	633.16	315.41	104.89	1.75	OSF1.50	16720.00	7272.00				MinPt-CiCt	
	738.09	633.28	315.37	104.81	1.75	OSF1.50	16730.00	7272.00				MinPts	
	817.38	606.93	412.23	210.45	2.02	OSF1.50	17073.23	7272.00				TD	
													Warning Alert
Kalsen 1-10 Blind 0' to 8290' - PR (Def Survey)	6967.61	32.81	6964.70	6934.80	6310.70	MAS = 10.00 (m)	0.00	0.00				Surface	
	6967.61	32.81	6964.09	6934.80	4077.69	MAS = 10.00 (m)	23.00	23.00				WRP	
	6967.61	32.81	6954.83	6934.80	635.12	MAS = 10.00 (m)	250.00	250.00				MinPts	
	1593.98	480.61	1273.05	1113.38	4.99	OSF1.50	12520.00	7272.00	OSF<5.00			Enter Alert	
	1071.81	541.60	710.21	530.21	2.97	OSF1.50	13700.00	7272.00				MinPt-CiCt	
													Warning Alert

...Confluence 34-01N-65W (Judy 34 Pad)\Judy 3-11-2L\Original Hole\Judy 3-11-2L R0 mdv 11Jul22

Offset Trajectory	Separation			Allow Dev. (ft)	Sep. Fact.	Controlling Rule	Reference Trajectory		Risk Level			Alert	Status	
	Ct-Ct (ft)	MAS (ft)	EOU (ft)				MD (ft)	TVD (ft)	Alert	Minor	Major			
Kallsen 14-10X Blind 0' to 8114' - PR (Def Survey)														
	1071.86	541.76	710.15	530.10	2.97	OSF1.50	13710.00	7272.00	OSF>5.00			MinPts		
	1072.24	542.01	710.36	530.22	2.97	OSF1.50	13730.00	7272.00				MnPt-O-SF		
	1646.72	497.14	1314.76	1149.58	4.98	OSF1.50	14950.00	7272.00				Exit Alert		
	3539.56	460.67	3231.92	3078.90	11.56	OSF1.50	17073.23	7272.00				TD		
Warning Alert														
	9637.36	32.81	9634.60	9604.55	10178.07	MAS = 10.00 (m)	0.00	0.00	OSF<5.00			Surface		
	9637.36	32.81	9634.00	9604.55	6210.35	MAS = 10.00 (m)	23.00	23.00				WRP		
	9637.36	32.81	9624.82	9604.55	898.28	MAS = 10.00 (m)	250.00	250.00				MinPts		
	1694.75	512.43	1352.59	1182.32	4.97	OSF1.50	15080.00	7272.00				Enter Alert		
	1093.53	621.28	678.81	472.25	2.64	OSF1.50	16370.00	7272.00				MinPt-CtCt		
	1093.63	621.65	678.66	471.98	2.64	OSF1.50	16390.00	7272.00				MinPts		
	1093.81	621.79	678.75	472.02	2.64	OSF1.50	16400.00	7272.00				MnPt-O-SF		
	1297.56	586.26	906.18	711.30	3.32	OSF1.50	17073.23	7272.00				TD		
Judy 3-5-2L R0 mdv 11Jul22 (Def Plan)														
Pass														
	231.21	32.81	230.23	198.40	N/A	MAS = 10.00 (m)	0.00	0.00				Surface		
	231.21	32.81	230.23	198.40	N/A	MAS = 10.00 (m)	23.00	23.00				WRP		
	230.78	32.81	226.52	197.97	70.14	MAS = 10.00 (m)	390.00	389.99				MinPts		
	231.02	32.81	226.19	198.22	59.70	MAS = 10.00 (m)	450.00	449.96				MINPT-O-EOU		
	441.61	32.81	424.50	408.80	27.31	MAS = 10.00 (m)	1700.00	1699.37				MnPt-O-SF		
	1070.62	44.09	1040.90	1026.53	37.22	OSF1.50	4010.00	4009.34				MnPt-O-SF		
	2522.49	678.45	2069.87	1844.05	5.58	OSF1.50	17073.23	7272.00				MinPts		
Judy 3-1-4L R0 mdv 11Jul22 (Def Plan)														
Pass														
	250.99	32.81	250.00	218.18	N/A	MAS = 10.00 (m)	0.00	0.00				Surface		
	250.99	32.81	250.00	218.18	N/A	MAS = 10.00 (m)	23.00	23.00				WRP		
	250.91	32.81	247.44	218.10	100.54	MAS = 10.00 (m)	310.00	310.00				MinPts		
	251.17	32.81	247.12	218.36	81.66	MAS = 10.00 (m)	370.00	369.99				MINPT-O-EOU		
	490.54	32.81	473.52	457.73	30.52	MAS = 10.00 (m)	1700.00	1699.37				MnPt-O-SF		
	1179.16	44.45	1149.20	1134.71	40.66	OSF1.50	4040.00	4039.32				MnPt-O-SF		
	2789.52	676.33	2338.30	2113.19	6.19	OSF1.50	17073.23	7272.00				MinPts		
Judy 3-3-3L R0 mdv 11Jul22 (Def Plan)														
Pass														
	252.14	32.81	251.15	219.33	N/A	MAS = 10.00 (m)	0.00	0.00				Surface		
	252.14	32.81	251.15	219.33	N/A	MAS = 10.00 (m)	23.00	23.00				WRP		
	252.14	32.81	249.27	219.33	132.96	MAS = 10.00 (m)	250.00	250.00				MinPts		
	252.30	32.81	249.14	219.49	115.57	MAS = 10.00 (m)	280.00	280.00				MINPT-O-EOU		
	437.77	32.81	424.92	404.97	36.79	MAS = 10.00 (m)	1320.00	1319.43				MnPt-O-SF		
	1477.87	44.38	1447.95	1433.49	51.05	OSF1.50	4090.00	4089.23				MnPt-O-SF		
	3444.11	147.49	3345.45	3296.62	35.25	OSF1.50	8470.00	7272.00				MINPT-O-EOU		
	3423.04	675.25	2972.55	2747.79	7.61	OSF1.50	17073.23	7272.00				MinPts		
Judy 3-2-2L R0 mdv 11Jul22 (Def Plan)														
Pass														
	266.15	32.81	265.16	233.34	N/A	MAS = 10.00 (m)	0.00	0.00				Surface		
	266.15	32.81	265.16	233.34	N/A	MAS = 10.00 (m)	23.00	23.00				WRP		
	266.15	32.81	263.27	233.34	140.37	MAS = 10.00 (m)	250.00	250.00				MinPts		
	266.32	32.81	263.16	233.51	122.04	MAS = 10.00 (m)	280.00	280.00				MINPT-O-EOU		
	453.05	32.81	440.39	420.24	38.71	MAS = 10.00 (m)	1310.00	1309.44				MnPt-O-SF		
	1658.02	43.41	1628.75	1614.61	58.58	OSF1.50	4050.00	4049.30				MnPt-O-SF		
	3960.32	676.44	3509.04	3283.88	8.79	OSF1.50	17073.23	7272.00				MinPts		
Judy 3-4-1L R0 mdv 11Jul22 (Def Plan)														
Pass														
	271.67	32.81	270.68	238.86	N/A	MAS = 10.00 (m)	0.00	0.00				Surface		
	271.67	32.81	270.68	238.86	N/A	MAS = 10.00 (m)	23.00	23.00				WRP		
	271.67	32.81	268.79	238.86	143.29	MAS = 10.00 (m)	250.00	250.00				MinPts		
	271.91	32.81	268.55	239.10	114.40	MAS = 10.00 (m)	300.00	300.00				MINPT-O-EOU		
	426.80	32.81	413.67	393.99	35.06	MAS = 10.00 (m)	1330.00	1329.42				MnPt-O-SF		
	547.28	32.81	530.46	514.47	34.50	MAS = 10.00 (m)	1700.00	1699.37				MnPt-O-SF		
	1347.86	44.68	1317.75	1303.18	46.24	OSF1.50	4060.00	4059.29				MnPt-O-SF		
	3024.86	678.92	2571.91	2345.93	6.69	OSF1.50	17073.23	7272.00				MinPts		
Judy 3-1-3L R0 mdv 11Jul22 (Def Plan)														
Pass														
	280.15	32.81	279.17	247.35	N/A	MAS = 10.00 (m)	0.00	0.00				Surface		
	280.15	32.81	279.17	247.35	N/A	MAS = 10.00 (m)	23.00	23.00				WRP		
	280.15	32.81	277.28	247.35	147.79	MAS = 10.00 (m)	250.00	250.00				MinPts		
	280.32	32.81	277.17	247.52	128.48	MAS = 10.00 (m)	280.00	280.00				MINPT-O-EOU		
	477.74	32.81	464.73	444.93	39.63	MAS = 10.00 (m)	1350.00	1349.41				MnPt-O-SF		
	1755.71	42.63	1726.96	1713.08	63.20	OSF1.50	4030.00	4029.33				MnPt-O-SF		
	4400.72	677.16	3948.96	3723.57	9.76	OSF1.50	17073.23	7272.00				MinPts		
Jordan 34-3 Blind 0' to 8008' - PR (Def Survey)														
Pass														
	1346.06	32.81	1344.24	1313.25	N/A	MAS = 10.00 (m)	0.00	0.00				Surface		
	1345.38	32.81	1343.47	1312.57	14219.85	MAS = 10.00 (m)	23.00	23.00				MnPt-O-SF		
	1325.89	231.28	1171.17	1094.62	8.65	OSF1.50	3900.63	3900.00				MinPt-CtCt		
	1328.33	238.45	1168.82	1089.87	8.40	OSF1.50	4020.00	4019.34				MINPT-O-EOU		
	1331.40	242.06	1169.49	1089.34	8.30	OSF1.50	4080.00	4079.25				MnPt-O-ADP		
	1831.47	401.36	1563.36	1430.10	6.87	OSF1.50	6770.00	6719.86				MnPt-O-SF		
	11440.75	440.07	11146.84	11000.69	39.13	OSF1.50	17073.23	7272.00				TD		
HSR-Cherry Knolls 9-33 Blind 0' to 8251' - DA (Def Survey)														
Pass														
	1666.60	32.81	1664.78	1633.79	N/A	MAS = 10.00 (m)	0.00	0.00				Surface		
	1666.46	32.81	1664.62	1633.65	78076.31	MAS = 10.00 (m)	10.00	10.00				MnPt-O-SF		
	1666.37	32.81	1664.54	1633.56	122193.24	MAS = 10.00 (m)	23.00	23.00				WRP		
	1504.04	400.27	1236.66	1103.77	5.65	OSF1.50	6720.00	6671.34				MinPt-CtCt		
	1504.83	402.65	1235.86	1102.17	5.62	OSF1.50	6760.00	6710.21				MINPT-O-EOU		
	1505.85	403.84	1236.09	1102.02	5.61	OSF1.50	6780.00	6729.48				MnPt-O-ADP		
	1522.97	411.34	1248.21	1111.64	5.57	OSF1.50	6910.00	6850.95				MnPt-O-SF		
	11157.46	444.11	10860.86	10713.36	37.82	OSF1.50	17073.23	7272.00				TD		
Jordan 34-5 Blind 0' to 7995' - PR (Def Survey)														
Pass														
	1797.28	32.81	1795.47	1764.48	N/A	MAS = 10.00 (m)	0.00	0.00				Surface		
	1797.03	32.81	1795.19	1764.22	62859.92	MAS = 10.00 (m)	20.00	20.00				MnPt-O-SF		
	1797.01	32.81	1795.17	1764.20	71057.52	MAS = 10.00 (m)	23.00	23.00				WRP		

Offset Trajectory	Separation			Allow Dev. (ft)	Sep. Fact.	Controlling Rule	Reference Trajectory		Risk Level			Alert	Status
	Cl-Ct (ft)	MAS (ft)	EOU (ft)				MD (ft)	TVD (ft)	Alert	Minor	Major		
	1796.96	32.81	1788.36	1764.17	263.76	MAS = 10.00 (m)	250.00	250.00				MinPts	
	1811.17	239.47	1650.99	1571.70	11.41	OSF1.50	4040.00	4039.32				MINPT-O-EOU	
	1814.62	243.68	1651.64	1570.95	11.23	OSF1.50	4110.00	4109.18				MinPt-O-ADP	
	2316.25	419.20	2036.24	1897.06	8.31	OSF1.50	7100.00	7010.53				MinPt-O-SF	
	10673.09	447.10	10374.49	10225.99	35.93	OSF1.50	17073.23	7272.00				TD	

UPV 3-2M5 Blind 0' to 8073' -
DA (Def Survey)

Pass

3456.57	32.81	3454.51	3423.76	14209.29	MAS = 10.00 (m)	0.00	0.00					Surface	
3456.57	32.81	3454.01	3423.76	4597.12	MAS = 10.00 (m)	23.00	23.00					WRP	
3456.57	32.81	3445.84	3423.76	387.52	MAS = 10.00 (m)	250.00	250.00					MinPts	
3494.99	256.54	3323.43	3238.45	20.55	OSF1.50	4270.00	4268.35					MINPT-O-EOU	
3503.35	266.63	3325.06	3236.72	19.82	OSF1.50	4440.00	4436.19					MinPt-O-ADP	
3368.60	445.82	3070.86	2922.79	11.37	OSF1.50	8690.00	7272.00					MinPt-CtCt	
3368.68	445.97	3070.83	2922.74	11.37	OSF1.50	8710.00	7272.00					MinPts	
3374.70	447.41	3075.89	2927.28	11.35	OSF1.50	8890.00	7272.00					MinPt-O-SF	
9037.20	468.87	8724.09	8568.34	29.01	OSF1.50	17073.23	7272.00					TD	

Great Western Wagner 41-10
Blind 0' to 8100' - PA (Def
Survey)

Pass

7535.20	32.81	7533.21	7502.39	42961.14	MAS = 10.00 (m)	0.00	0.00					Surface	
7535.20	32.81	7532.63	7502.39	10024.27	MAS = 10.00 (m)	23.00	23.00					WRP	
7535.20	32.81	7524.08	7502.39	809.98	MAS = 10.00 (m)	250.00	250.00					MinPts	
4039.67	532.21	3684.32	3507.46	11.42	OSF1.50	13410.00	7272.00					MinPt-CtCt	
4040.13	533.60	3683.86	3506.53	11.39	OSF1.50	13470.00	7272.00					MINPT-O-EOU	
4040.70	534.28	3683.97	3506.41	11.37	OSF1.50	13500.00	7272.00					MinPt-O-ADP	
4077.10	543.68	3714.11	3533.42	11.28	OSF1.50	13960.00	7272.00					MinPt-O-SF	
5454.08	553.29	5084.69	4900.79	14.82	OSF1.50	17073.23	7272.00					TD	